



Loudoun County Sheriff's Office Ashburn Station

Quarterly Community Meeting
Thursday December 7th, 2023





LOUDOUN COUNTY SHERIFF'S OFFICE



WELCOME !





Meeting Agenda

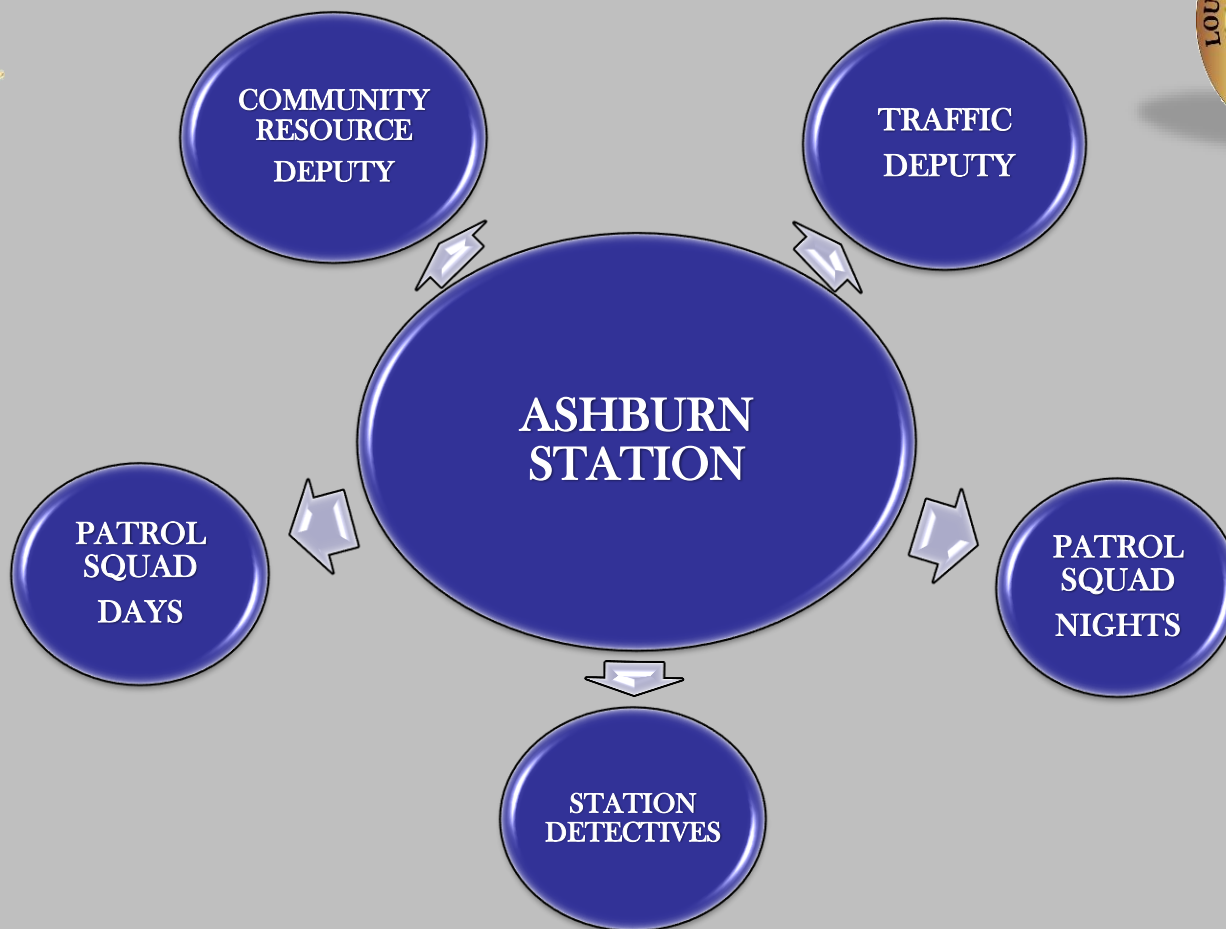


- Welcome
- 1st Lieutenant Milton Castelle
 - Introductions
 - Station Overview
 - Calls for Service
- Station Sergeant Edward Jappell
 - Section Overview
 - Community Outreach
 - Significant Cases
 - Closing Informational Items





Ashburn Station Sections





Loudoun County Sheriff's Office Station Populations

Eastern Loudoun Station

Population: 86,781

Ashburn Station

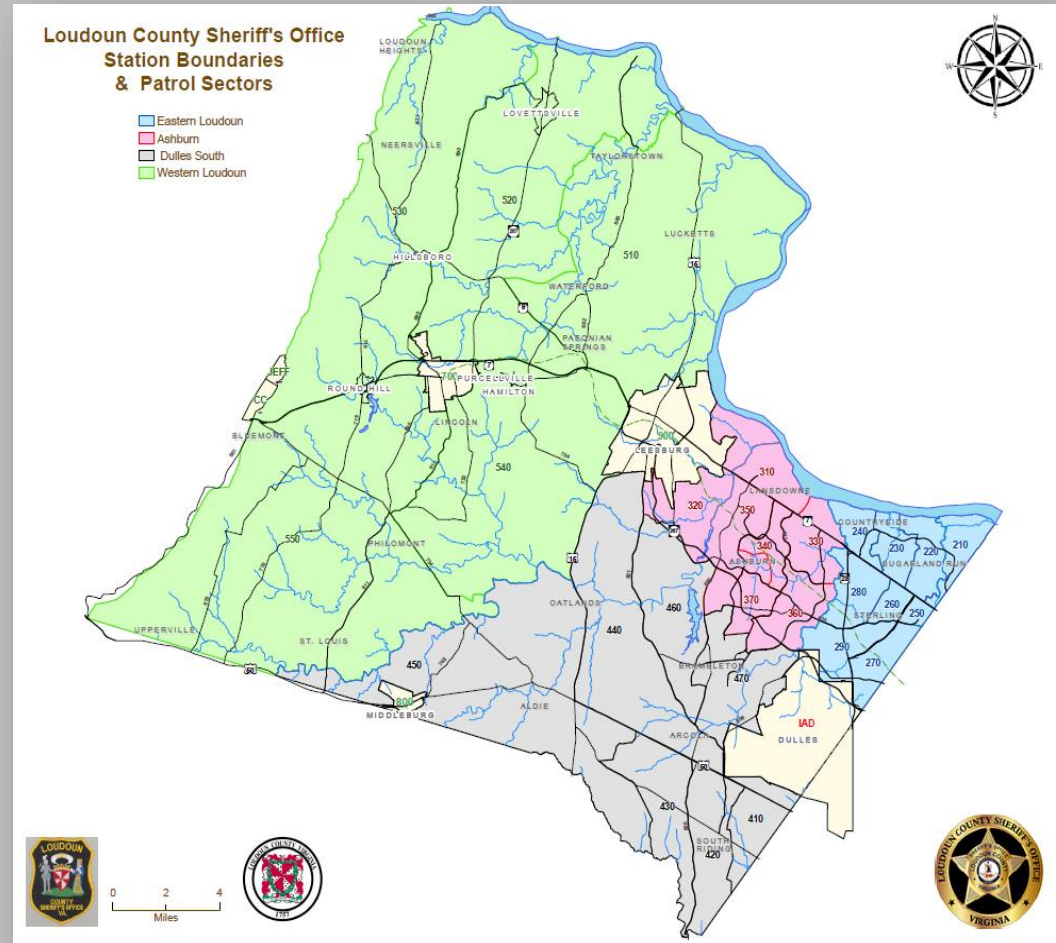
Population: 102,896

Dulles South Station

Population: 131,502

Western Loudoun Station

Population: 54,349



Compiled by: Loudoun County Department of Planning and Zoning, April 2021





Calls For Service Statistics/Traffic Enforcement



Quarterly Calls For Service

July - Aug - Sep 2023

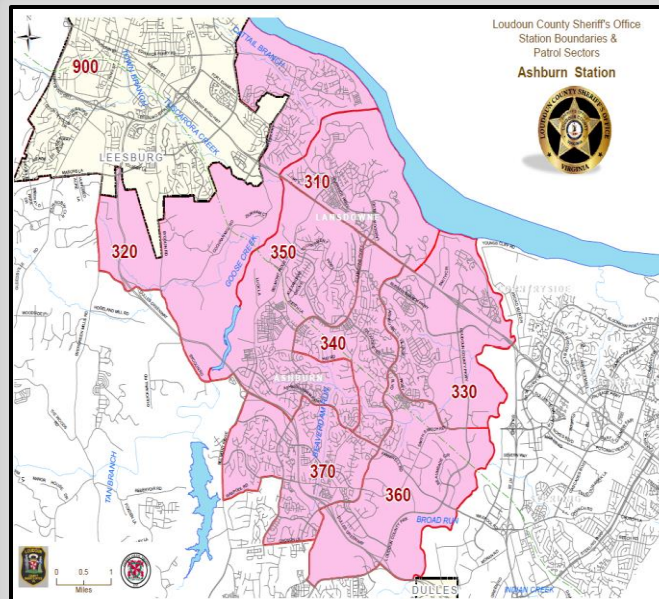
ASHBURN	11,881
COUNTYWIDE	39,014
ASHBURN STATION % OF CALLS	30 %

YTD Calls For Service

January - Sep 2023

ASHBURN	35,155
COUNTYWIDE	118,387
ASHBURN STATION % OF CALLS	30 %

Ashburn Station Population 102,896



Quarterly Calls For Service

July - Aug - Sep 2022

ASHBURN	10,750
COUNTYWIDE	35,126
ASHBURN STATION % OF CALLS	31 %

YTD Calls For Service

January - Sep 2022

ASHBURN	32,256
COUNTYWIDE	108,210
ASHBURN STATION % OF CALLS	30 %





CopLogic Statistics - Online Reporting



Calendar Year 2023

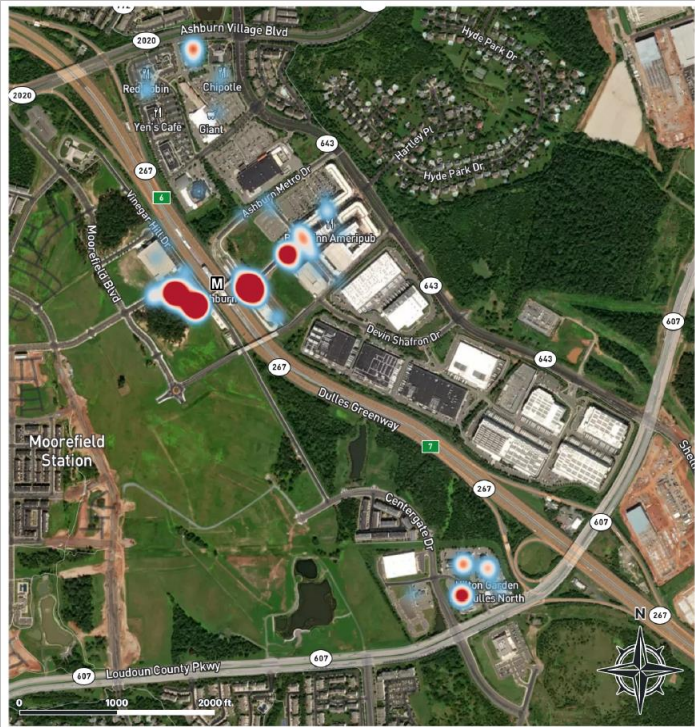
Month	Total Reports	Hours Saved	Cost Savings
January	170	340	\$12,750.00
February	157	314	\$11,775.00
March	173	346	\$12,975.00
April	201	402	\$15,075.00
May	205	410	\$15,375.00
June	162	324	\$12,150.00
July	194	388	\$14,550.00
August	211	422	\$15,825.00
September	163	326	\$12,225.00
October			
November			
December			
Total	1636	3272	\$122,700.00

Total Reports 2023

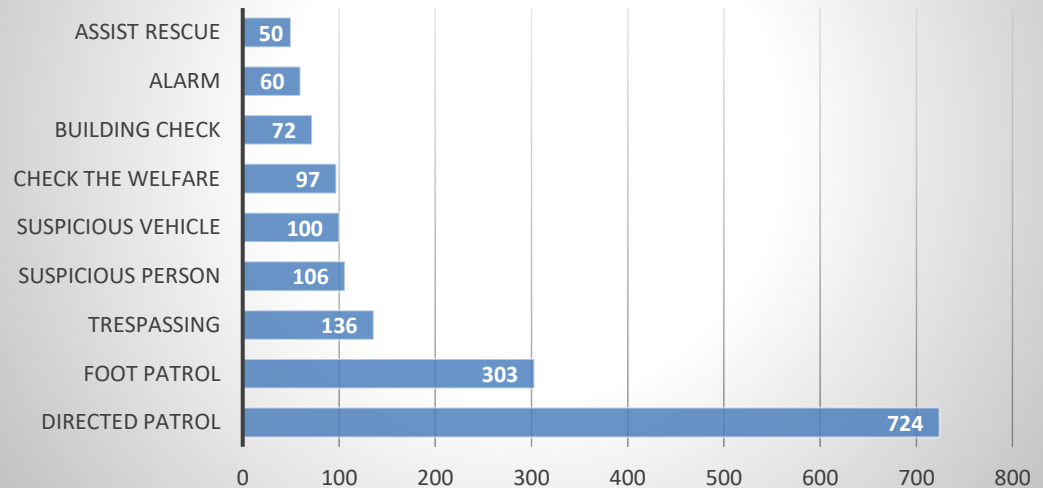




Ashburn Metro Station



ASHBURN METRO STATION Calls For Service NOV 15, 2022 - NOV 30, 2023



We continue to work with WMATA, MTPD, FFXPD, OEM and Comstock Property/Loudoun Station- Park X security





Ashburn Metro Station

Metro Station – Loudoun Station Incidents



2023 – Q1	2022	2023	Change
DIP	3	9	6
Larceny	19	36	17
Simple Assault	18	24	6

2023 – Q2	2022	2023	Change
DIP	9	8	-1
Larceny	19	29	10
Simple Assault	25	14	-11

2023 – Q3	2022	2023	Change
DIP	5	6	1
Larceny	11	35	24
Simple Assault	15	11	-4

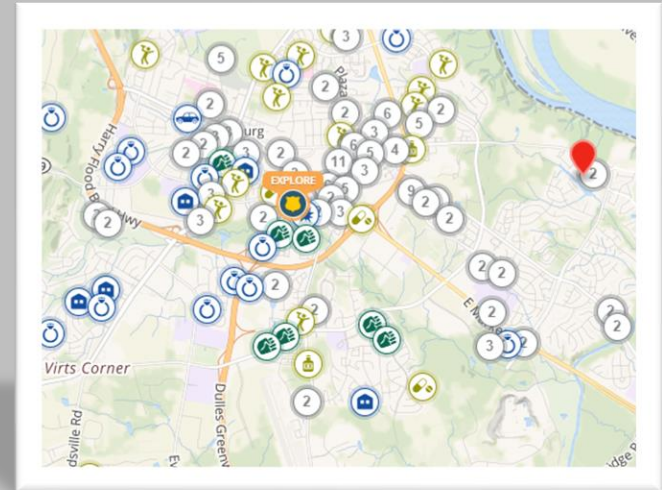




CityProtect



The LCSO uses CityProtect as an online mapping and analysis service that combines the value of law enforcement data with the ease of use of Google-based mapping and an analytics module so that members of the public can view police data in a high-impact map or summary descriptive format.



Many residents have asked about the option to register their security camera at CityProtect.com. Registration is 100% voluntary and does not provide the law enforcement with direct access to your security system/camera. Your personal information will be kept confidential by the LCSO and registration information will only be accessed by law enforcement if there is a criminal incident that was possibly captured by your security camera. LCSO detectives or deputies may request a copy of any video captured by your camera, if it may assist in the investigation of a crime.





LCSO Medication Disposal Drop Box



Ashburn Station-

20272 Savin Hill Drive, Ashburn

Dulles South Public Safety Center-

25216 Loudoun County Parkway,
Chantilly

Eastern Loudoun Station-

46620 East Frederick Drive, Sterling

Leesburg Public Safety Center-

65 Plaza Street NE, Leesburg

Shenandoah Building-

102 Heritage Way NE, Leesburg

Western Loudoun Station-

47 W. Loudoun Street, Round Hill



YOU MAY DROP OFF:

- Prescription Medications
- Prescription Patches
- Over the Counter Medications
- Vitamins
- Sample Medications
- Medications for Pets

THE FOLLOWING ARE NOT ACCEPTED:

- Needles (Sharps)
- Liquid Medications
- Aerosol Containers
- Inhalers
- Ointments and Lotions
- Medications from Businesses





Ashburn Station



Sergeant Edward Jappell

Ashburn Station Sergeant

Serving Since 2006

(571)258-3363

Edward.Jappell@loudoun.gov





Community Resource Deputy



DFC. Kevin R. Lewis
Community Resource Deputy
Serving Since 2019
(571)528-2169
Kevin.R.Lewis@loudoun.gov

Mission



- Develop relationships and partnerships with community members, organizations, and businesses
- Develop solutions for long-term problems affecting communities
- Address community concerns
- Flexible schedules to meet service demands
- Work as a station enforcement team with Property Crimes Detectives





Community Outreach



Loudoun County Sheriff's Office
TUESDAY, AUGUST 1, 2023
National Night Out

Join the LCSO and our community partners to celebrate America's Night Out Against Crime.

Ashburn Station Area <ul style="list-style-type: none"> Ashburn Village, 44078 Cheltenham Circle (6:30 - 9 p.m.) Broadlands, Southern Walk Pool - Village Dr. (6 - 8 p.m.) Landsdowne - 43459 Riverpoint Drive (4-8 p.m.) One Loudoun Pavilion at Russell Branch Pkwy. (5 - 8 p.m.) 	Dulles South Station Area <ul style="list-style-type: none"> South Riding, 43055 Center Street (7 - 9 p.m.)
Western Loudoun Station Area <ul style="list-style-type: none"> Town of Lovettsville, Town Green (6:30 - 8:30 p.m.) Town of Purcellville (Purcellville PD) <p><i>Refer to the Purcellville PD Facebook page for more information.</i></p>	
Eastern Loudoun Station Area <ul style="list-style-type: none"> Cascades Community Assoc., 20670 Fernbank Court (6 - 8 p.m.) Countyside HOA, 46030 Algonquin Parkway (6 - 8 p.m.) Mirror Ridge HOA, Mirror Ridge Pl. @ Silhouette Sq. (6-8 p.m.) Sugarland Run, 200 Greenfield Court (6 - 8 p.m.) 	

Proudly Serving Loudoun County Since 1757

CHILD Safety Day

New Date
SATURDAY, OCTOBER 28, 2023
12 - 4 PM

1602 VILLAGE MARKET BLVD, LEESBURG

Come out and see safety displays and get important child safety information from our community partners.

DEA Clan Lab
 Federal Bureau of Investigations (FBI)
 Inova Hospital
 Internet Crimes Against Children Task Force
 Leesburg Police Department
 Loudoun Abused Women's Shelter
 Loudoun Child Advocacy Center
 Loudoun County Child Protective Services
 Loudoun County Combined Fire & Rescue Service
 Loudoun County Commonwealth's Attorney's Office
 National Center for Missing & Exploited Children
 Ryan Bartel Foundation
 Special Olympics Virginia
 Virginia State Police

NATIONAL PRESCRIPTION DRUG TAKE BACK DAY

Saturday, October 28, 2023
10 a.m. - 2 p.m.

Stop by any of the below locations and safely drop off your unused or expired medications for safe disposal.

LEESBURG POLICE DEPARTMENT
 65 Plaza Street, NE, Leesburg
LOUDOUN COUNTY SHERIFF'S OFFICE
 Ashburn Station
 20272 Savin Hill Drive, Ashburn
 Dulles South Station
 25216 Loudoun County Pkwy., Chantilly
 Eastern Loudoun Station
 46620 E. Frederick Drive, Sterling
 Western Loudoun Station
 47 W. Loudoun Street, Round Hill
PURCELLVILLE POLICE DEPARTMENT
 125 Hirst Road, Suite 7A, Purcellville

DEA NATIONAL TAKEBACK

NATIONAL COFFEE With a Cop Day

WEDNESDAY, OCTOBER 4, 2023

Join the LCSO for National Coffee with a Cop Day. No agenda or speeches, just a chance to ask questions and get to know the deputies in your community!

9:00 - 11:00 a.m. Hope's Treasures Thrift Store <i>*with Good Shepherd Alliance</i> 20684 Ashburn Road, Ashburn	9:00 - 10:00 a.m. Middleburg Common Grounds <i>*with Middleburg Police Department</i> 114 W. Washington Street, Middleburg
12:00 - 2:00 p.m. One Loudoun <i>*outside center area</i> 20575 Easthampton Plaza, Ashburn	9:00 - 10:30 a.m. BKD Bagels <i>*with Purcellville Police Department</i> 130 Purcellville Gateway Dr, Purcellville
11:00 a.m. - 1:00 p.m. Back Street Brews 11 E. Pennsylvania Avenue, Lovettsville	8:00 - 10:00 a.m. Wawa 25055 Oakgrove Road, Sterling

Join the Loudoun County Sheriff's Office at Topgolf Loudoun for

TIP-A-COP to benefit

Special Olympics Virginia

Friday, October 27, 2023
11 a.m. - 7 p.m. @ Topgolf
20356 Commonwealth Center Dr, Ashburn

Join LCSO deputies and Special Olympics athletes at Topgolf as they collect donations for Special Olympics Virginia.

Can't attend in person but want to make a donation? Scan the QR code and please put "LCSO Tip-A-Cop" in the COMMENT field.

Special Olympics Virginia

TOPGOLF





Traffic Deputy



Mission

- Develop relationships and partnerships with community members, organizations, and businesses
- Develop solutions for long-term problems affecting communities
- Address community concerns
- Flexible schedules to meet service demands
- Work as a station enforcement team with Property Crimes Detectives



DFC. Nelson Gonzalez

Traffic Deputy

Serving Since 2020

(571) 498-3504

Nelson.Gonzalez@loudoun.gov

Traffic Stops:

July - 152

August - 132

September - 101





Ashburn Station Detectives



Det. Michael Rivera
Station Detective
Serving Since 2016

Michael.Rivera@loudoun.gov



Det. Michael Franks
Station Detective
Serving Since 2007

Michael.Franks@loudoun.gov





Significant Cases



During the month of July, a suspect cut the fence and entered the Waxpool Dominion Energy Substation. Once inside, the suspect stole a large amount of copper wire. LCSO, Dominion Energy, Amazon & Databank Data Centers worked together to identify the suspect who is responsible for numerous Destruction of Property and Thefts from critical infrastructure facilities in Ashburn.

The suspect was charged with Grand Larceny, Destruction of Property & Trespassing.





Significant Cases



- LCSO is actively investigating multiple cases of **CREDIT CARD THEFT/FRAUD**.
- Please be sure to protect all valuables when attending a fitness center and keep car keys on your person.
- Person pictured is currently wanted by LCSO. Credit cards were stolen in Loudoun and then used at Cartier and Neiman Marcus in Tysons Corner.
- Photo on left is suspect in Tysons the day of the crime. Photo on right is suspect in Beverly Hills CA several days later stopped by law enforcement on unrelated reasons.
- Suspect is identified as Marius Andrei Iordan (Romanian citizenship) and is believed to be part of a larger criminal enterprise.





Reminder | Safety Tips



Safely Secure All Firearms * Not Inside Your Vehicle *





Reminder | Safety Tips



Spoil Your Grandkids, Not Scammers!

Beware of scammers posing as a relative – usually a child or grandchild. Often they claim to be in trouble – usually in jail, stranded in a foreign country, or injured at a hospital. The scammer may ask you to send cash by mail, buy gift cards, or even offer to send a person to your residence to pick up cash. They will instruct you to keep it a secret and that you have to act fast.

WHAT CAN YOU DO?

- Don't send money. Hang up and call family members to confirm the story.
- Never trust anyone who says you can't report it to law enforcement.
- Call the Loudoun County Sheriff's Office for advice 703-777-1021.
- Don't purchase gift cards to pay for bills, bail, attorney fees, taxes, etc. – **IT IS A SCAM.**





Cryptocurrency Scams

Invest

This is one of the popular ways thieves steal cryptocurrency. After gaining trust, the scammer encourages the victim to invest in cryptocurrency trading. The scammer guarantees the victim will make money, either through an insider tip or some investor knowledge. This type of scam is commonly referred to as "Pig Butchering".

If you have been a victim of a scam, please contact LCSO at 703-771-1021





Become a Crossing Guard



BECOME A CROSSING GUARD

\$18.62-\$30.73/hr

- Calling All Stay-at-Home Parents, Grandparents, Retirees, & College Students
- Great Part-Time Positions
- Work Only when School is in Session
- Various Locations

JOIN OUR
TEAM



More information:



703-771-5735



www.joinLCSO.com





Safe2Talk App



Have you downloaded

Safe2Talk?

Safe2Talk is a free app that allows students, parents, teachers, and residents the ability to anonymously report safety concerns in our schools, including suspicious or threatening social media activity. Search Safe2Talk LCSO in the App Store or Google Play to download.



If you see or hear something, say something





Stay Connected



- Inform You of Public Safety Matters Directly Impacting Your Community
- Get to Know your Local Deputy
- Report a Crime or File a Traffic Complaint
- Receive Resident Feedback
- Stay in the 'Loop' about Crime & Safety Issues in Your Community
- Real time Alerts



LCSO Social Media



Like us on Facebook



Follow us on Twitter



Follow us on Instagram



Subscribe to us on YouTube



Contact us on Nextdoor





Project Lifesaver

What We Can Do for You...

- ▶ Identify individuals who are at increased risk of wandering from the home.
- ▶ Deputies will meet with individuals and their caregivers to assist them in determining if they are a potential client.
- ▶ They will assist you in obtaining the equipment or services needed.
- ▶ Bimonthly follow-up by a team of deputies will ensure information is current and equipment is working.
- ▶ This will assist deputies in the search effort should the client become lost.
- ▶ All information regarding the client and family is confidential and is only used for emergency situations.
- ▶ Access is restricted to rescue, fire, and sheriff's office personnel.

Education and community awareness continues to be the cornerstone of Project Lifesaver's success. Our deputies are active in presenting information to civic groups, healthcare providers and to interested groups throughout the community.

Who to Contact...

Project Lifesaver Coordinator
Master Deputy Matt Devaney
571-233-2487
Matthew.Devaney@loudoun.gov

Project Lifesaver Assistant Coordinator
Master Deputy Daniel Martynowicz
571-420-9779

Daniel.Martynowicz@loudoun.gov

More Information...

National Project Lifesaver

International Headquarters

1-877-580-LIFE

www.projectlifesaver.org/site

How Can I Help...

Please feel free to contact our office at 703-777-0407. Your donation to Project Lifesaver International (designated to Loudoun County Sheriff's Office) a non-profit 501(c)(3) charitable organization, is tax deductible and all contributions are used directly for program operations including rescues, equipment, and education.

For more information please visit:

www.sheriff.loudoun.gov/projectlifesaver

Loudoun County Sheriff's Office

P.O. Box 7200

803 Sycolin Road, S.E.

Leesburg, VA 20177-7200



Project Lifesaver

To Locate Missing Persons with Alzheimer's, Autism, or Down Syndrome



Peace of Mind for those you Love

Sheriff Michael L. CHAPMAN

Loudoun County Sheriff's Office

sheriff.loudoun.gov

Project Lifesaver

Project Lifesaver is a national, proactive electronic tracking program used to assist in locating people with Alzheimer's disease, dementia and related disorders, and children with Down Syndrome or Autism Spectrum Disorder who wander from home and become lost.

A lost child with Autism or Down Syndrome, or an adult wandering from dementia, constitutes a critical emergency and presents challenges to police in search and rescue operations. While we cannot predict when a person will become lost, we can prepare.

A personalized state-of-the-art battery powered transmitter is used that emits a constant radio signal 24 hours a day. The radio transmitter is the size of a wrist watch and provides a constant radio signal.

Once the sheriff's office is notified that a person is missing, deputies identify the signal from a specialized directional antenna and are able to track the wandering person. Deputies will use this equipment on foot, in cars, and also by air, providing maximum cover and capability for search efforts for several miles.

Nationwide, Project Lifesaver has responded to more than 3,046 rescues and all were 100 percent successful with a recovery time of less than 30 minutes.

Locator Bracelet



Project Lifesaver is designed to provide security and comfort for the family while safely guarding the memory-impaired and those who are least able to help themselves.



The Project Lifesaver bracelet is much more than a passive ID bracelet. It is a battery operated radio wrist transmitter emitting an automatic tracking signal every second, 24 hours a day. The signal is tracked on the ground up to 1 mile and in the air up to 10 miles. As each bracelet has a unique radio frequency, the Project Lifesaver search team positively locates and identifies the person who has wandered away from home or a care facility.

The National Alzheimer's Association reports 32,000 people wander away from homes and care facilities each year.

The Partnership with Law Enforcement

Project Lifesaver is about people and partnerships. The focus is on communities where law enforcement, civic groups, local businesses and caregivers join in developing and strengthening all aspects of the program including rescues, education and especially fundraising so families in financial need can have the protection and the peace of mind.

Project Lifesaver saves lives and further serves the community by significantly reducing the need for extensive search and rescue operations that are extremely costly in terms of human and financial resources. Searches for wandering individuals that have taken days and tens of thousands of dollars and scores of searchers can be successfully concluded in less than an hour if Project Lifesaver is available in your community.

This partnership and the program's effectiveness and reliability has earned the endorsement of the National Sheriff's Association, Virginia Sheriff's Association, and the Alzheimer's Association of America





Narcan Training

<https://www.loudoun.gov/revive>



REVIVE!

Opioid Overdose & Naloxone Education for Virginia

Learn the signs of an opioid overdose emergency and how to respond with naloxone, a life-saving medication that can reverse an opioid overdose.



Watch the 6-minute Rapid REVIVE! video & Receive free naloxone nasal spray



Available anytime.
No registration necessary.
Free and confidential.
loudoun.gov/rapidrevive





Thank you for your continued support !



1st Lieutenant Milton Castelle
Assistant Station Commander
Serving Since 2007
(571) 258-3000
Milton.Castelle@loudoun.gov



Sergeant Edward Jappell
Station Sergeant
Serving Since 2006
(571) 258-3363
Edward.Jappell@loudoun.gov

