

LEGEND

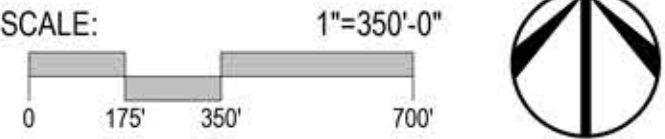
- HIKING TRAIL
- EQUESTRIAN TRAIL
- VEHICULAR NETWORK
- ROUND HILL TRAIL
- MEADOW
- FOREST

- 1 SLEETER LAKE
- 2 TOWN OF ROUND HILL WATER TREATMENT FACILITY
- 3 ABANDONED RUINS
- 4 FRANKLIN PARK POOL AND SPORTS COURTS
- 5 FRANKLIN PARK PERFORMING AND VISUAL ARTS CENTER
- 6 BREEZEWOOD KENNELS

EXISTING AMENITIES

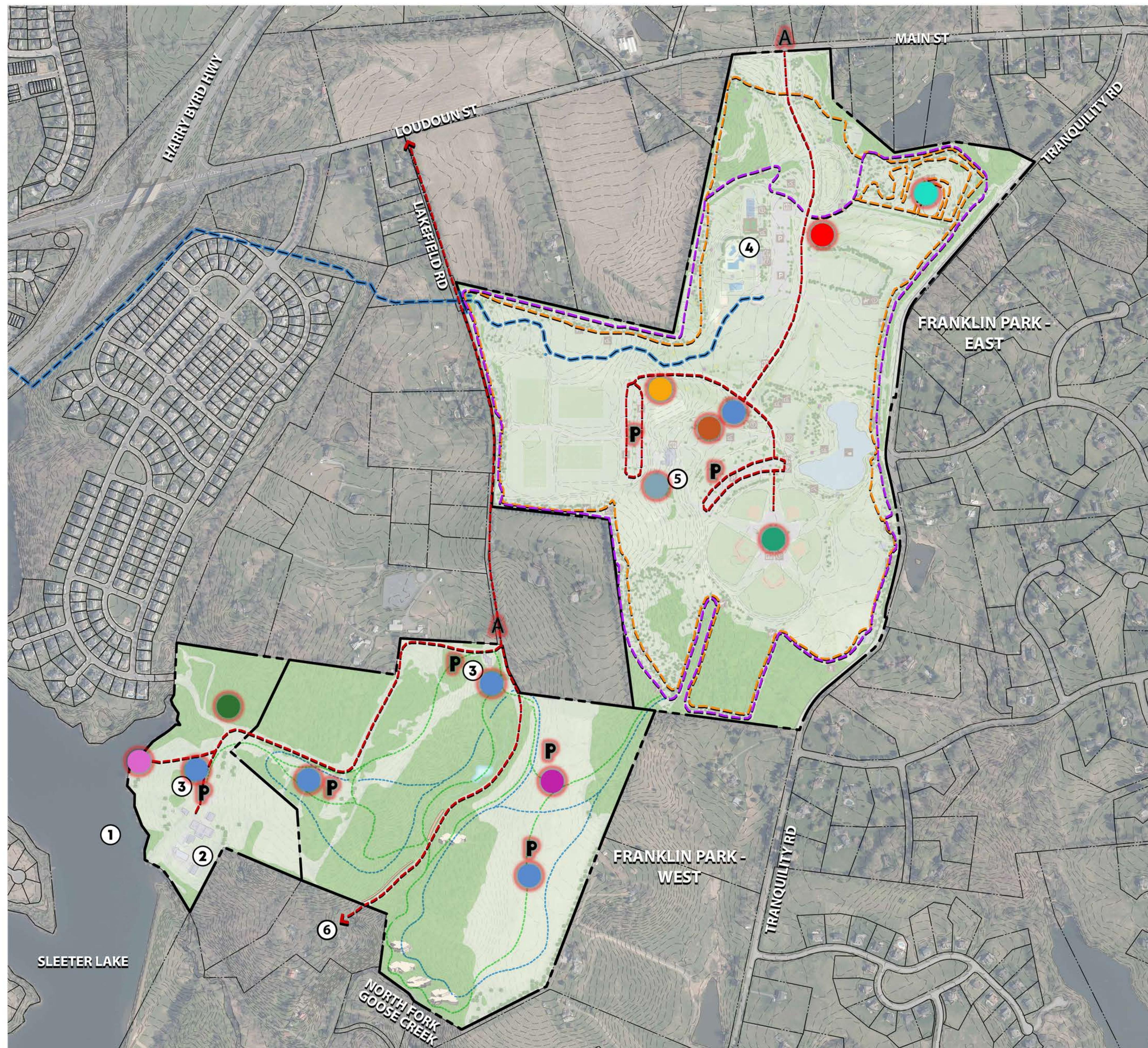
- | | |
|--------------------------|--------------------------------|
| PARK OFFICE | RECREATIONAL SPORTS FIELDS - 4 |
| PARKING | BASEBALL FIELDS - 5 |
| INFORMATION KIOSK | EVENT AREA |
| COVERED SHELTER | POOL |
| FISHING AREA | TENNIS COURTS - 2 |
| KAYAK LAUNCH AND STORAGE | VOLLEYBALL COURTS - 2 |
| PLAYGROUND | EQUESTRIAN RING |
| PUBLIC RESTROOM | DISC GOLF FAIRWAYS - 18 |

FRANKLIN PARK
LOUDOUN COUNTY, VA



PROPOSED FRANKLIN PARK
SITE ANALYSIS





LEGEND

- HIKING TRAIL
- EQUESTRIAN TRAIL
- VEHICULAR NETWORK
- ROUND HILL TRAIL
- MEADOW
- FOREST

- | | |
|---|---|
| ① SLEETER LAKE | ④ FRANKLIN PARK POOL AND SPORTS COURTS |
| ② TOWN OF ROUND HILL WATER TREATMENT FACILITY | ⑤ FRANKLIN PARK PERFORMING AND VISUAL ARTS CENTER |
| ③ ABANDONED RUINS | ⑥ BREEZEWOOD KENNELS |

PARK AMENITIES

- | | |
|--|--|
| VISITORS CENTER / OFFICE | DESTINATION PLAYGROUND |
| CONCESSION STAND | DRONE USE AREA |
| AMPHITHEATER | PARK PAVILLIONS |
| EQUESTRIAN CENTER | KAYAK LAUNCH AND STORAGE |
| EXPANDED MAINTENANCE | TOWN OF ROUND HILL OFFICE AND MAINTENANCE FACILITY |
| --- EQUESTRIAN TRAILS | P PARKING |
| --- HIKING TRAILS | A ACCESS |

FRANKLIN PARK

LOUDOUN COUNTY, VA

SCALE: 1"=350'-0"

0 175' 350' 700'



PROPOSED FRANKLIN PARK CONCEPTUAL AMENITIES





FRANKLIN PARK

LOUDOUN COUNTY, VA



FRANKLIN PARK EAST

PROPOSED PARK FACILITIES:

- SIDEWALK NETWORK WITH WAYFINDING AND SIGNAGE
- AMPHITHEATER
- CONCESSIONS AND RESTROOMS
- EXPANDED DESTINATION PLAYGROUND
- SCULPTURE / ART
- EXPANDED MAINTENANCE FACILITIES
- EXPANDED PARKING



FRANKLIN PARK EAST CENTRAL FACILITIES CONCEPT





FRANKLIN PARK

LOUDOUN COUNTY, VA



FRANKLIN PARK WEST

PROPOSED EQUESTRIAN FACILITIES:

- RIDING RING (POTENTIAL FOR FUTURE COVERED ARENA)
- STAGING RING
- TRAILER AND GUEST PARKING
- SHADE PAVILION WITH RESTROOMS
- +/- 10,000 L.F. OF NEW EQUESTRIAN ONLY TRAILS (OPEN FIELD AND SLOPED WOODS)
- +/- 16,000 L.F. OF EXISTING EQUESTRIAN TRAILS (FRANKLIN PARK EAST)
- +/- 26,000 L.F. (4.9 MILES) TOTAL EQUESTRIAN TRAILS (EAST AND WEST)
- EQUESTRIAN CIRCUIT (VARIETY OF TRAINING TYPES)

FOR COMPARISON: EXISTING LOUDOUN CO. EQUESTRIAN PARKS FACILITIES TRAIL LENGTHS:

- LOVETTSVILLE COMMUNITY PARK: +/- 6,000 L.F. EQUESTRIAN TRAIL LOOP
- GLENWOOD PARK: +/- 7,000 L.F. EQUESTRIAN TRAIL LOOP

PROPOSED HIKING FACILITIES:

- PAVILION WITHOUT RESTROOMS AT UPPER FIELD
- PAVILION WITHOUT RESTROOMS AT EXISTING RUINS
- GUEST PARKING AT PAVILION STRUCTURES
- NATURE TRAIL CIRCUIT (OPEN FIELD, SLOPED WOODS, AND WETLAND WALK)
- INFORMATIVE WAYFINDING (ENVIRONMENTAL AND HISTORICAL SIGNAGE)



FRANKLIN PARK WEST

EQUESTRIAN CENTER & TRAILS CONCEPT





FRANKLIN PARK

LOUDOUN COUNTY, VA



FRANKLIN PARK WEST: SLEETER LAKE

PROPOSED PARK FACILITIES:

- BOAT LAUNCH (RECENTLY INSTALLED)
- KAYAK/CANOE STORAGE
- PERFORMANCE / CLASSROOM BENCH SEATING
- TRAILER AND GUEST PARKING
- LAKESIDE PAVILION W/OUT RESTROOMS
- HILLSIDE PAVILION WITH RESTROOMS
- INFORMATIVE WAYFINDING (ENVIRONMENTAL AND HISTORICAL SIGNAGE)
- ARCHITECTURAL RUINS NTERPRETIVE SIGNAGE
- TOWN OF ROUND HILL MAINTNENANCE/OFFICE FACILITY
- TOWN OF ROUND HILL WATER TREATMENT PLANT ACCESS ROAD

PROPOSED EQUESTRIAN, HIKING, AND BIKING FACILITIES:

- NATURE TRAIL CIRCUIT FROM SLEETER LAKE TO FRANKLIN PARK EAST
- EQUESTRIAN TRAIL CONNECTED TO EQUESTRIAN CENTER FACILITIES
- DESIGNATED BIKING TRAILS AND OFF TRAIL COURSE WITH VARIED, BIKE-ONLY TRAIL TERRAIN



FRANKLIN PARK WEST SLEETER LAKE CONCEPT

