

Chapter 3 – Natural, Environmental, and Heritage Resources

Table of Contents

Vision.....	2
Introduction.....	2
Topics.....	3
Water Resources	3
Geologic and Soil Resources	5
Forest, Trees, and Vegetation	7
Historic and Archaeological Resources	8
Cultural Landscapes.....	10
Plant and Wildlife Habitats.....	10
Complementary Elements.....	11
Sustainability.....	12
Policies, Strategies, and Actions.....	14
Reference Maps	33

This page left blank for printing purposes.

Chapter 3 – Natural, Environmental, and Heritage Resources

Vision

Protect and enhance the County's natural, environmental, and heritage resources, which are fundamental to the health, safety, welfare, sustainability, and enjoyment of current and future generations.

Introduction

Abundant natural, environmental, and heritage resources define Loudoun County's unique sense of place. Loudoun County has a tradition of being in the forefront of natural, environmental, and heritage resource protection in Virginia, which is evident in past planning efforts. The *Loudoun County Choices and Changes Plan*, adopted in 1991, grouped natural, environmental, and heritage resources into categories that shared common elements, strengthening the relationships among them. The 2001 *Revised General Plan* retained the grouping of elements while also developing a Green Infrastructure strategy for the conservation, preservation, and restoration of these elements. The *Revised General Plan* also identified a conservation design process to allow for conservation of the natural, environmental, and heritage resource elements while also providing for full development of a site. The *Loudoun County 2019 Comprehensive Plan* (Comprehensive Plan) continues to encourage the use of a design process to better protect and enhance the County's natural, environmental, and heritage resources and incorporate such features into site design.

Protect and enhance natural, environmental, and heritage resources through the following:

Conservation

Careful management of natural and environmental features within the built environment.

Preservation

Retaining and protecting natural, environmental, and heritage resources.

Restoration/Recapture

Enhancing natural, environmental, and heritage resources wherever possible.

Education

Communicating the importance of natural and heritage resources.

Natural, environmental, and heritage resources include the Potomac River edge, major rivers, stream corridors, floodplains, wetlands, steep slopes, ridges and mountainsides, forested and vegetative landscapes, limestone geology areas, farmlands, soil resources, important plant and wildlife habitats, historic and archaeological sites, scenic areas and corridors, designated heritage areas, battlefields, historic cemeteries, and cultural landscapes. Complementary elements, such as air quality, aural environment, and the night sky are also important to the health, safety, and welfare of Loudoun residents. Natural, environmental, and heritage resources are tangible assets that make

the County an appealing place to live, work, learn, and play while contributing directly and indirectly to Loudoun's economy. Preserving, protecting, and enhancing these resources is critical to the County's long term economic, environmental, and social sustainability.

This chapter provides guidance for the protection of natural, environmental, and heritage resources in conjunction with the development and redevelopment of the County. These resources are important County assets and should be a primary consideration in the development of a site. Although many of the County's best preserved natural, environmental, and heritage resources are located within the Rural Policy Area, important resources have been identified in all parts of the County and are, in many cases, critical to the character of individual communities both east and west (See Natural and Environmental Resources Map). The County has a history of protecting and preserving these important resources through policies, regulatory measures, land acquisition, and educational programs. The protection of these resources will not only provide environmental and heritage benefits but will enable residents to experience the natural environment within the context of the built environment. The protection of these resources is interrelated, creating a network of natural, environmental, and heritage resources. For instance, the protection and preservation of existing forest cover adjacent to a stream helps to filter pollutants from entering the stream and provide for streambank stabilization, while also improving air quality, conserving energy, creating wildlife corridors, and protecting archaeological resources.

Updating and adopting zoning regulations and development standards to implement the objectives of this chapter will be important for protecting the health, safety, and welfare of Loudoun residents as well as preserving natural, environmental, and heritage resources for the enjoyment of future generations.

Topics

Water Resources

River and Stream Corridor Resources (RSCR) consist of rivers and streams that drain 100 acres or more, associated 100-year floodplains, adjacent steep slopes, and a 50-foot management buffer surrounding the floodplains and adjacent steep slopes (See River and Stream Corridor Resources Map). RSCRs constitute the County's largest natural ecosystem, supporting air quality, water quality, and biological diversity. If the floodplain and adjacent steep

slopes are less than 100 feet beyond either stream bank, a 100-foot minimum stream buffer will protect the river and stream corridor. The buffers help to maintain stream bank stabilization, temperature moderation, flood control, and aquatic habitat as well as filter nutrients and sediments from upland disturbances and adjacent development. Because rivers and streams and their associated floodplains are dynamic, the buffers help to ensure that development adjacent to the floodplain today will not be in the floodplain in the future. The 50-foot management buffer can be reduced if it can be shown that a reduction does not adversely impact the floodplain, adjacent steep slopes, wetlands, and riparian forests of the river and stream corridor.

The identification of buildable areas on a site will protect and preserve river and stream segments draining less than 100 acres and wetlands that are not part of the RSCR.

The County has two State-designated Scenic Rivers: Goose Creek and the segment of Catoctin Creek that runs from Waterford to the Potomac River. These scenic rivers are an important part of the County's river and stream corridor system. The County also seeks to preserve the Potomac River shoreline.

Major water resource issues for the County include ensuring an adequate supply of drinking water, protecting groundwater and surface water from contamination and pollution, stormwater management, and preventing the degradation of water quality in the watersheds (See Watersheds Map).

Impaired Streams

Many stream segments across the County have been designated as "impaired" by the Virginia Department of Environmental Quality (DEQ). In 2009, the County conducted an assessment of streams within all the County's watersheds. The County assessment indicated impairments in over 75 percent of County streams (see Impaired Streams Map). One tool used by the State to help restore these degraded waters is the Total Maximum Daily Load (TMDL) program, which is defined by Section 303(d) of the Clean Water Act (CWA). The TMDL represents the amount of a pollutant that a waterway can assimilate and still maintain its health. The TMDL identifies the responsible pollutant and the suspected cause and source of the pollutant. Based on the results of the TMDL, DEQ may require the County to develop and implement a TMDL Action Plan to reduce pollutants. If required, actions may include stormwater pollutant reduction and mitigation projects, such as stormwater infrastructure retrofits, reforestation, stream restoration, and/or riparian plantings. Additionally, Loudoun County is located within the Chesapeake Bay Watershed and is currently subject to the Chesapeake Bay TMDL and the Chesapeake Bay Watershed Implementation Plan (WIP), which requires state jurisdictions within the watershed, including Virginia, to meet sediment, phosphorus, and nitrogen reduction goals by 2025.

The County has completed several efforts regarding water resources since 2001:

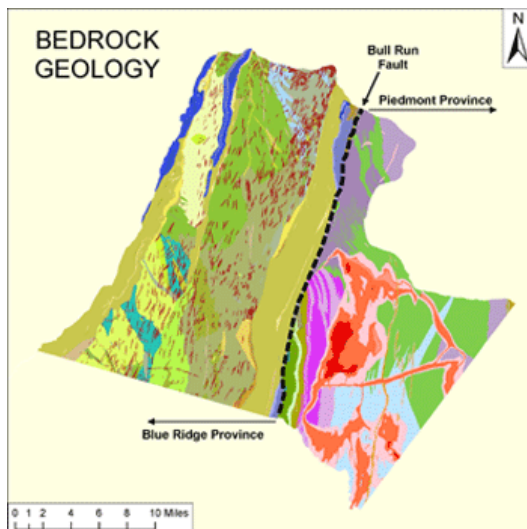
- Water quality monitoring;
- 2009 County Stream Assessment;
- Strategic Watershed Management Solutions;
- Chesapeake Bay Watershed Implementation Plan;
- Comprehensive Watershed Management Plan;
- Upper Broad Run Watershed Management Pilot Project; and
- Countywide Floodplain Remapping of February 17, 2017.

Due to the length of the TMDL process and the number of impairments in the County, it may take decades before certain water quality restoration efforts achieve positive results. Additionally, given the anticipated rate of development within the County, many areas will likely have entitlements prior to the development of the local TMDL Action Plans. Therefore, a proactive approach towards water quality efforts will help to avoid costly and time-consuming processes to restore water quality to the required standards after development is completed. Actions and cooperation by all

sectors including County Government, land developers, and property owners are needed to effectively control and meet required pollution standards to protect water resources.

Surface and Groundwater Resources

Groundwater supply is the primary drinking water source for residents of Loudoun's western towns and rural areas. Loudoun Water and the Town of Leesburg source drinking water from the Potomac River, and Loudoun Water also uses two reservoirs located along Beaverdam Creek and Goose Creek. The western towns provide drinking water from wells, and the Town of Purcellville augments this with surface water from the J. T. Hirst Reservoir. As of 2018, there are over 15,000 private groundwater wells in the County, mostly in western Loudoun. Increasing impervious land cover contributes to diminishing groundwater capacity and stream degradation, as rainwater that was once filtered through the soil to replenish groundwater and remove pollutants is now kept above ground. Stormwater is then carried via culverts and stormwater pipes directly to local streams bypassing the natural filtration process.



Physiographic provinces are determined based on geology and landforms.

Geologic and Soil Resources

The eastern half of Loudoun County is located in the Piedmont physiographic province, and the western half is in the Blue Ridge physiographic province. The Bull Run fault, coextensive with the eastern edge of the Catoctin Mountain, forms the boundary line between the two provinces. Soils and geologic information are important considerations in land development, predicting potential impacts on erosion, water quality and quantity, and failing slopes, as well as informing mitigation of adverse impacts post-development.

Limestone

An area of approximately 18,000 acres (approximately 5.5 percent of the County) that lies predominately north of Leesburg and east of Catoctin Mountain is characterized as karst terrain (See Limestone Overlay

District Map). Karst terrain refers to areas where mildly acidic water has gradually dissolved the underlying limestone and other carbonate rocks, creating a landscape characterized by underground cavities, sinkholes, and springs. These areas are susceptible to increased cavity collapse, ground slippage, groundwater pollution, and threats to the stability of foundations and structures. In 2010, the Board of Supervisors (Board) adopted amendments to the Zoning Ordinance that established the Limestone Overlay District (LOD), which regulates development in karst areas.

Prime Agricultural Soils

Prime agricultural soils are soils that are best suited for conventional agricultural use. Nineteen

percent of the County consists of prime farmland as defined by the U.S. Department of Agriculture. These soils are usually found in areas that are nearly level to gently sloping, well drained, and with access to water sources. Loudoun's remaining best agricultural soils are generally located in the Rural Policy Area. Prime agricultural soils in Loudoun are often seen as desirable for residential development. Once this land-based resource is lost, however, it cannot be reclaimed. Because the County has emphasized the rural economy as an important part of its overall economic health, prime farmland and agricultural soils are especially valuable. Since the establishment of the Loudoun County Agricultural and Forestal District (AFD) Program in 1979, over 43,000 acres are enrolled within 23 Agricultural and Forestal Districts (AFDs)¹ throughout the County.

Mountainside and Steep Slopes

Loudoun's mountains are a valued environmental resource and distinctive feature of the County's scenic beauty. Mountainsides contain headwaters to many of the County's streams and are identified as a critical groundwater recharge area for western Loudoun County. Residents, visitors, and rural businesses value the scenic vistas that the hills and mountains provide. They are also highly sensitive to land disturbance and development. In addition to the destruction of prime



Loudoun's mountains are a significant attraction for residents and visitors and contribute to the County's distinctive beauty.

viewsheds, uncontrolled land disturbance within these areas can cause major soil slippage, debris flows, or landslides. Disturbances that can initiate these land surface failures include removal of trees and vegetation; cutting, filling, or blasting of the soil and bedrock; and altering the soil moisture content by excessive groundwater withdrawal or changing surface water runoff. The Zoning Ordinance regulates these areas through the Mountainside Development Overlay District (MDOD). The MDOD contains land use restrictions and performance standards to minimize the destruction of individual resources and the disturbance of the ecological balance of these resources. The boundaries of the MDOD are based on a range of both technical and aesthetic factors. Mountainside areas are divided into three areas depending on the elevation and the types of resources present as determined by weighted analytical criteria (Somewhat Sensitive, Sensitive, and Highly Sensitive). Policies in this Plan also encourage mountainside areas to be placed under permanent open space easement. Updates to the MDOD are included as an Action to bring the Zoning Ordinance and the Plan guidance into alignment.

Recognizing the importance of protecting steep slopes beyond the mountainous areas of the County, in 1993 the Board adopted an amendment to the Zoning Ordinance establishing standards

¹ As of September 25, 2017

for development on steep slopes. Since the adoption of the Steep Slope standards, several revisions have occurred, resulting in greater flexibility in the standards. Steep slopes and moderately steep slopes occupy an area of approximately 53,000 acres (approximately 16 percent of the County). Moderately steep slopes are areas with a 15 percent to 25 percent grade (identified by Slope Class D on Loudoun County soil maps). Steep slopes refer to more environmentally critical slopes with a grade greater than 25 percent (identified by Slope Class E on Loudoun County soil maps). Improper use and disturbance can trigger increased erosion, building failure, road failure, downstream flooding, and other hazards.



This specimen Shumard oak at Algonkian Regional Park is one of the largest trees in Loudoun County, measuring 112 feet tall and 176 inches around.

Forest, Trees, and Vegetation

The County's forests and trees improve air and water quality, offer important habitat for birds, small mammals, and other wildlife, and provide buffers between communities. Forests and trees conserve energy by providing shade and evaporative cooling through transpiration. They also reduce wind speed and redirect airflow, reduce stormwater runoff and soil erosion, and can increase real property values. Riparian forests along streams provide the greatest single protection of water quality by filtering pollutants from stormwater runoff, decreasing stream bank erosion, and maintaining the physical, chemical, and biological condition of the stream environment. The County also has some of the state's best hardwood stands for

lumber and veneer production. Working forests in rural areas contain valuable stands of hardwood timber, while trees and forest resources in the more urban portions of the County help to make them attractive places to live, work, learn, and play.

The County supports the incorporation of existing tree cover into required buffers as well as the control and removal of invasive species. The use of existing vegetation to meet screening and landscape buffer requirements is preferred over the removal and planting of new vegetation. Action steps call for the submittal of a Tree Cover Inventory as part of development applications to evaluate existing tree cover and identify areas worthy of preservation. Forest resources are also protected through AFDs, easements, and other voluntary means, as well as through the implementation of the MDOD, LOD, and Steep Slope standards in the Zoning Ordinance.

Historic and Archaeological Resources

The cultural heritage of the County is reflected in its remaining rural landscapes, scenic road networks, historic structures, and archaeological sites. Identification, preservation, conservation, and sensitive reuse of these resources is critical for the retention of the County's distinctive character. Where these resources have not yet been identified or studied, public and private resource surveys are increasingly important to inventorying and preserving them. Most of these elements will remain in private ownership and can be preserved through private stewardship, protective buffers, donation of open space easements, County historic district zoning standards, and context-sensitive site design. A number of incentive-based programs can also be used, including state and federal tax credit programs.



Archaeological Investigations at Lansdowne.

Since 1972, Loudoun County has helped protect its unique historic assets through the designation and regulation of local historic districts under the County's Zoning Ordinance. There are six County-administered Historic and Cultural Conservation Districts (Aldie, Bluemont, Goose Creek, Oatlands, Taylorstown, and Waterford) and two County-administered Historic Site Districts (Welbourne and the Broad Run Toll House properties). The County has also designated a Historic Roadways District, the Beaverdam Historic Roadways District, which comprises a network of 32 rural roads (See Historic Districts Map). In addition, the incorporated towns of Leesburg, Middleburg, and Purcellville administer local historic districts through their zoning ordinances.



Oatlands Plantation, a historic estate dating from the late 18th century, is one of 88 County sites listed on the National Register of Historic Places.

There are also five National Historic Landmarks in the County, including Balls Bluff Battlefield, Dodona Manor, Oatlands Plantation, Oak Hill, and Waterford. Resource surveys have identified nearly 7,000 individual historic structures and archaeological sites in the County to date. The County has 88 sites listed in the National Register of Historic Places. The County last conducted a comprehensive architectural resource survey in 2004; however, an analysis of the number of heritage resources that may have been impacted or lost in the interim has not

been conducted. The County's inventory of heritage resources is constantly expanding as property owners, developers, and preservation organizations document and record new resources.

Most of the County-initiated comprehensive survey work was completed in the early 2000s, such as the Post-Civil War Structure Survey (2003) and an [African-American Historic Architectural Resources Survey](#) (2004). The County also conducted surveys in 2016 for the [Ball's Bluff Battlefield Expansion Project](#) and a Rural Schools Survey. The County and state database of surveyed resources is largely augmented through the Phase 1 archaeological and historic resources surveys that are required with legislative and preliminary subdivision applications, as well as private property owners requesting listing in the National Register of Historic Places.

There is a difference: local, state, and national historic designation

- **National Historic Landmark (NHL)** (five in Loudoun County) – **Honorary** – deemed significant to all Americans because of their exceptional values or qualities, which help illustrate or interpret the heritage of the U.S. If a property is named a NHL, it is also listed on the National Register of Historic Places (NRHP) and the Virginia Landmarks Register (VLR).
- **National Register of Historic Places** (76 County historic districts and individual properties within Loudoun County) – **Honorary** – includes buildings, structures, sites, objects, and districts significant in American history, architecture, archaeology, engineering, and culture.
- **Virginia Landmarks Register** (two in Loudoun County) – **Honorary** – eligible for but not automatically listed in the National Register if a majority of property owners submit notarized objections to the VDHR.
- **Local Historic Designation** (six local historic districts, 2 individual historic properties, and 1 historic roadway district) – **Regulatory** – the only designation regulated by the County or incorporated Towns through zoning overlays. Does not regulate routine repairs and maintenance.

The Board adopted the [Heritage Preservation Plan](#) (HPP) in 2003 and a subsequent amendment to the HPP in 2009. The Board created the Heritage Commission (HC) in 2011 to implement many of the recommendations in the HPP. The HC brings a range of public and private sector experience and expertise to heritage issues. Since the adoption of the HPP in 2003, the County has recognized the need to focus attention on heritage resources associated with historically marginalized communities in the County. Because African American communities and Native American communities are not well represented in the historic written record, the County recognizes the importance of archaeological resources, oral histories, historic settlements, cemeteries, burial grounds, and places of worship to understand, preserve, and interpret the lives and contributions of these Loudoun residents (See African American Historic Communities Map). Development applications will be evaluated using both the HPP and this Plan.

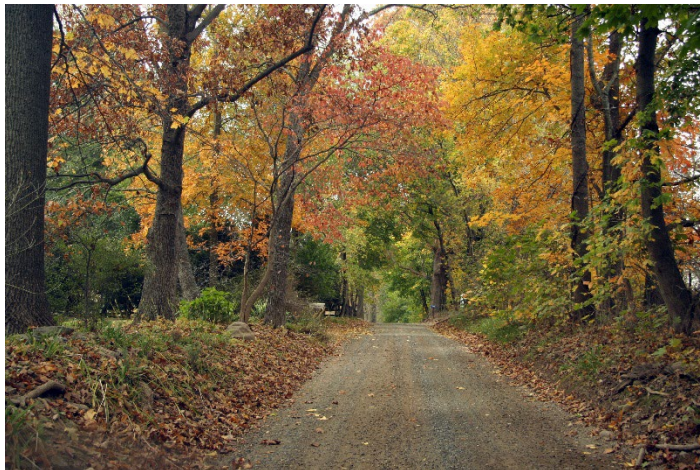
Cultural Landscapes

Cultural landscapes include heritage areas and corridors, scenic byways and waterways, battlefields, and historic cemeteries. There are several roadways within the County that are designated as Virginia Byways. Goose Creek and a portion of Catoctin Creek are designated as State Scenic Rivers. In 2002 the County established the Beaverdam Creek Historic Roadways District to protect a cultural landscape that has changed little since Loudoun County's formation in 1757.



Catoctin Creek

Photo Credit: James Hanna



Loudoun County's scenic network of more than 200 miles of unpaved roads is the most extensive in the state.

A nationally recognized heritage area, The Journey Through Hallowed Ground, as well as a state-designated heritage area, the Mosby Heritage Area, fall within the boundaries of Loudoun County. The Journey Through Hallowed Ground follows Route 15/29 from Gettysburg in Pennsylvania (a designated National Byway), through Loudoun County, to Monticello near Charlottesville, Virginia. In 2008, the Board passed a resolution in support of the Mosby Heritage Area, and the County is a partner with The Journey Through Hallowed Ground project. The

Mosby Heritage Area, formed in 1995, represents the cultural landscape and landmarks of three centuries of our nation's history. The Mosby Heritage Area encompasses parts of five counties, including all of Loudoun County.

Plant and Wildlife Habitats

Plants and animals play an important role in nature's lifecycle and its ecosystems. For wildlife habitats, large contiguous parcels of natural open space are preferable to more numerous but disconnected and smaller areas. The creation of a larger network helps ensure the viability of the habitat.

While many high-quality plant and animal habitats have already been lost or altered due to land development, the County still has several unique and natural habitat areas. The largest contiguous areas of forest and naturally vegetated land are on mountainsides, steep slopes, and along stream channels. These areas play a key role in preserving the abundance and diversity of the County's remaining plant and wildlife resources. The integrated approach to preserving natural, environmental, and heritage resources is intended to help prevent habitat fragmentation, while enhancing ecological connections with larger areas.



Heron rookery adjacent to the Broad Run near Ashburn.

The County strives to protect, preserve, and create large-scale plant and wildlife habitats that overlap with other important resources and resource systems. The County will also protect rare, threatened, and endangered plant and animal species habitats in accordance with the federal Endangered Species Act. Action steps call for development applications that have the likelihood of one or more natural heritage resources to conduct a species assessment and develop a plan for impact avoidance in cases where the presence of the species is identified.

Natural Heritage Resources include: rare, threatened, and endangered plant and animal species; exemplary natural communities, habitats, and ecosystems; and other natural features of the County.

Complementary Elements

Complementary elements consist of elements that are not directly a part of the land-based environmental and heritage resources but complement them. They include air quality, aural environment, and lighting and the night sky.

Air Quality

In order to meet the federal goals of the Clean Air Act, the County offers an integrated land use approach that protects air quality by planning development in locations that are close to major transportation facilities and transit nodes, limiting gross densities in the Rural and Transition Policy Areas, and promoting and implementing alternative modes of transportation. Loudoun is included in the United States Environmental Protection Agency's (EPA) Washington, D.C. nonattainment area for meeting national standards for air contaminants. The County has an active role on the Metropolitan Washington Air Quality Committee (MWAQC) and the National Capital Region Transportation Planning Board (TPB).

Aural Environment

Efforts to protect existing and future residents from increased levels of environmental noise have focused primarily on airport noise surrounding Washington Dulles International Airport (IAD) and Leesburg Executive Airport (see Airport Noise Impact Area Map). The Airport Impact Overlay District (AIOD) of the Zoning Ordinance imposes development restrictions within specified areas to protect existing and future residents as well as maintains the economic viability of these important transportation and economic development resources. Future Airport Noise Corridor studies could lead to updates to the noise contours surrounding IAD.

The County also has policies to protect noise-sensitive uses adjacent to major roadways, calling for appropriate noise mitigation measures to be incorporated into the overall project design when Noise Abatement Criteria (NAC) Hourly A-Weighted Sound Levels are approached or exceeded.

Lighting and the Night Sky

The County's night sky is an asset that should be protected from excessive and improper lighting. The County recognizes the need for artificial lighting for the purposes of public safety and visibility, but such lighting should be designed and programmed to minimize light pollution. Action steps call for updating lighting standards that promote quality and energy-efficient lighting, preserve the natural beauty of the night sky, and minimize impacts on people, plants, and wildlife.

Sustainability

Sustainability seeks to achieve economic development, social equity, and environmental protection in a balanced manner. Sustainability is commonly defined as development that meets the needs of the present without compromising the ability of future generations to meet their own needs. Over the last several decades, Loudoun County has integrated sustainability into the community fabric to foster a high quality of life. The County will continue its leadership and infuse a sense of responsibility among all sectors of the community to take a more active role in sustainability.

Sustainable development calls for practices that are cost-effective, enhance human health and well-being, and protect and restore the environment. The County has developed and implemented the following programs and plans that demonstrate a commitment to a more sustainable community:

- [*Clean Waters Initiative*](#), which hosts educational and partner projects, from floating wetlands, to native tree planting, to rain gardens, to pasture and crop management, to stream protection.
- [*The Loudoun County Energy Efficiency and Conservation Program*](#), which provides leadership, guidance, education, and technical expertise to reduce energy consumption, improve energy efficiency, reduce energy costs, and facilitate energy conservation in County facilities.
- [*Energy Strategy 2009*](#), a 30-year road map of energy strategies for the Loudoun County government and community.

- [Environmental Policy](#), which provides outreach and guidance regarding pollution reductions set by the Total Maximum Daily Load (TMDL), which was established by the EPA for the Chesapeake Bay. Monitors environmental legislation and regulatory activity that may have an impact on Loudoun County operations and residents, including federal regulations such as the EPA's Chesapeake Bay TMDL.
- [Stormwater Management Program](#), which addresses the design, development, improvement, operation, inspection, maintenance, and oversight of the stormwater management system.
- [Water and Wastewater Program, established through Water and Wastewater Needs Assessment Implementation Plan](#), is a program that recognizes the need for a detailed, systematic approach to solve existing and potential future water and wastewater problems in the county, including assistance and support for communities experiencing issues with deficient or absent water and/or wastewater systems.

Energy use is the major human cause of greenhouse gases. The electricity sector is currently the largest emitter of greenhouse gases, followed by the transportation sector; industry, commercial, and residential fuel use; and agriculture. In 2007, the *County Energy Strategy* (CES) concluded that if Loudoun County remained on a business-as-usual track with its countywide growth – while accounting for some expected improvements in the efficiency of both existing structures and new construction – then by 2040 the County would require 46 percent more energy to manage the expected growth. Over the same period, total greenhouse gas emissions would increase by 50 percent.

The County monitors inefficient energy sources at government facilities and eventually plans to shift to an alternative source of energy. As an example, Loudoun County converted Purcellville Library's oil Heating, Ventilation, and Air Conditioning system to electric and propane.

The County enforces the 2012 International Energy Conservation Code (IECC), the most current model code establishing the minimum design and construction requirements for energy efficiency. County policies have a goal of constructing County facilities to Leadership in Energy and Environmental Design (LEED) Silver, or equivalent standards, where it makes sense to do so. Green building rating systems provide a consistent metric for measuring site development and building performance. Also, rating systems raise awareness of the environmental impacts of site development and buildings and help determine measures to minimize those impacts.

Loudoun County is a member of the Metropolitan Washington Council of Governments (MWCOG). MWCOG focuses on the following environmental planning areas: water resources, air quality, climate and energy, recycling and solid waste, and agriculture and forestry. Loudoun County assists in advancing the goals laid out in MWCOG's [Region Forward](#) for clean water, air, and land, and a more sustainable region.

The County is committed to policies, strategies, and actions that protect natural, environmental, and heritage resources and integrate the concepts of sustainability into greater community planning and development goals. As the County continues to grow, so will the opportunities and challenges related to preservation and conservation of natural, environmental, and heritage resources. A

proactive approach to water quality could help to avoid costly and time-consuming processes to restore water quality as part of TMDL Action Plans. Through watershed management plans, the County has the opportunity to identify areas where management practices will most effectively enhance water quality. The County also has the opportunity to document efforts to promote sustainability, environmental stewardship, and protect the environment. The County should continue to support and build upon work that has already begun and consider the development of a sustainability plan or an annual report highlighting work that is being done. The Board can use this report to identify future goals. Essential to the preservation of heritage resources and cultural landscapes is proactive survey and evaluation of these resources as provided in the HPP. The following Policies, Strategies, and Actions reflect these concepts and more, balancing the environmental, social, and economic factors that will shape the County for future generations.

Policies, Strategies, and Actions

Unless otherwise specified, the following Policies, Strategies, and Actions apply Countywide.

Natural, Environmental, and Heritage Resources

(See also Chapter 6, Fiscal Management and Public Infrastructure)

NEHR Policy 1: Provide protection for natural, environmental, and heritage resources.

Strategy

- 1.1. Support mechanisms to further the goals of conservation, preservation, restoration, recapture, and education to protect the health, safety, and welfare of Loudoun residents.

Actions

- A. Maintain a map of natural, environmental, and heritage resources as part of an integrated system and contiguous network of natural and passive open spaces and active recreational sites.
- B. Identify those properties that are not conducive to development due to sensitive environmental, cultural, and historical characteristics, and promote their preservation through various public and private programs (such as the Open Space Preservation Program, conservation easements, etc.).
- C. Adopt zoning regulations and development standards that implement a process identifying natural, environmental, and heritage resources worthy of preservation and developing around those resources as part of all land development.

D. Update the *Facilities Standards Manual*, the *Land Subdivision and Development Ordinance*, and other development standards to implement the natural, environmental, and heritage policies in this Plan.

Land Development applications should use the following design process to identify buildable areas:

E. Should the Board of Supervisors consider adopting a Transfer of Development Rights (TDR) program in the future, a thorough evaluation of the countywide impact on sending and receiving areas for density transfers will be conducted and, if acceptable to the Board of Supervisors, such additional policies will be added to the Comprehensive Plan and considered for implementation with a future TDR ordinance.

1. Identifying the environmental, natural, and heritage features of a site to be preserved;
2. Locating buildings on the unconstrained land; and
3. Locating street, utility, and trail on the development plan.
4. Locating lot lines.

F. Use a design process that conserves natural, environmental, and heritage resources and incorporates any such features into the site design; Use Value Assessment Program; AFDs; public-private partnerships; and other regulatory and incentive-based efforts (e.g., a potential TDR program) for the preservation, conservation, restoration, and management of the County's natural, environmental, and heritage resources. Explore and implement additional incentive-based approaches.

Transfer of Development Rights (TDR) and Conservation Easements are tools available to the County and public and private entities to protect and preserve open space, farms, and natural, environmental, and heritage resources in perpetuity, allowing landowners to retain ownership of their property, while maximizing the economic value of the land.

G. Retain conservation easements as a tool to protect open space areas in subdivisions and to ensure long-term maintenance and protection of the area. Such easements will be recorded as part of the subdivision process and include public access where appropriate.

H. Direct public investment and resources toward completing a natural, environmental, and heritage resource network and recapturing natural, environmental, and heritage resources in developed areas.

I. Require development proposals that impact one or more natural, environmental, and heritage resources to offset impacts by enhancing and/or recapturing natural, environmental, and heritage resources elsewhere onsite.

J. Require development proposals to create links to adjacent natural, environmental, and heritage resources to create an integrated network and prevent habitat fragmentation.

Strategy

- 1.2. Promote private, state, and federal conservation programs and their allocated resources to advance conservation programs within the County through public and private means such as grants, voluntary easements, and dedications.

Action

- A. Study and, if feasible, aid in the establishment of a public-private conservation partnership to facilitate communication, grants, easements, education, and partnership opportunities to conserve and protect natural, environmental, and heritage resources.

Strategy

- 1.3. Act as a leader and educator in environmental design to achieve and sustain a high-quality built environment.

Action

- A. Provide incentives for innovative design and support collaborative public-private-community partnerships for program implementation including provisions for awards of certificates of excellence in environmental design for the public and private sectors.

Strategy

- 1.4 Link natural, environmental, and heritage resources to create opportunities for open space corridors for the enjoyment of current and future generations.

Action

- A. Prioritize protection of the following priority open space areas through conservation easements acquired by the County or others, participation in the Open Space Preservation Program, development design, and other means:
 - i. Key natural, environmental, and heritage resource features not already protected from development by conservation easements or regulation,
 - ii. Rural areas immediately adjacent to the Towns, JLMAs, and Rural Historic Villages that help form greenbelts and gateway buffers,
 - iii. Areas adjacent to the Potomac, Catoclin, Bull Run, Goose Creek, and Broad Run floodplains to protect water quality,
 - iv. Properties on the State or National Registers of Historic Places and within local historic districts,
 - v. Corridors and sites that the County has identified for trails and parks and additions to existing parks provided they permit the construction of such facilities, and
 - vi. Other areas of local natural, historic, or cultural significance including designated scenic rivers and roads.

River and Stream Corridor Resources

RSCR Policy 2: The County will protect natural ecosystems, restore water quality, serve Loudoun's population, and support the built environment through healthy surface and groundwater resources.

Strategy

- 2.1. Establish and maintain a healthy river and stream corridor ecosystem that meets desired water quality standards, protecting from the damages of soil erosion and flooding while promoting biological diversity.

Actions

- A. Amend zoning regulations and development standards, including but not limited to the Floodplain Overlay District (FOD) and Scenic Creek Valley Buffer sections, to address the objectives of the RSCR policies. Zoning regulations and development standards will establish performance standards and best management practice (BMP) requirements to ensure the health and biological integrity of the river and stream corridors and minimize adverse impacts.
- B. Develop and implement a watershed management plan for each watershed, establishing development guidelines and performance standards to protect water quality.
- C. Establish appropriate regulations for Catoctin Mountain, Short Hill Mountain, and the Blue Ridge Mountains to limit diversions of water from the Catoctin and Goose Creek headwaters and prevent stream pollution.
- D. Maintain a working relationship with the Federal Insurance and Mitigation Administration of the Federal Emergency Management Agency (FEMA) for continued participation in the National Flood Insurance Program (NFIP). The County will also maintain its current status as a Cooperating Technical Partner in FEMA's Flood Map Modernization program.
- E. Work with the incorporated towns, Loudoun Water, and other organizations and agencies to establish overall water quality goals and specific standards for individual streams and river and stream corridors, consistent with County RSCR objectives and policies.
- F. Coordinate with the Metropolitan Washington Airport Authority regarding water quality protection within the Broad Run watershed.
- G. Promote and encourage community programs, such as the "Adopt-A-Stream" program, in order to keep river and stream corridors free of litter and debris and as a means of promoting public awareness of the County's river and stream corridors.

- H. Support the interstate 2014 Chesapeake Bay Watershed Agreement—a watershed partnership among Virginia, Maryland, West Virginia, Delaware, New York, Pennsylvania, the District of Columbia and the United States EPA—and continue supporting Virginia’s action towards meeting the Chesapeake Bay TMDL and WIP.
- I. Support the mitigation of stream and wetland impacts and the creation of stream and wetland mitigation banks within Loudoun County to improve water quality in Loudoun.
- J. Maintain the County’s Predictive Wetland Model and require submittal of digital wetland delineations in conjunction with land development applications in order to develop a reliable wetlands inventory and map of wetland areas.

Strategy

- 2.2. Establish River and Stream Corridor Resource (RSCR) buffers to promote river and stream health (streambank/streambed stability, temperature moderation, nutrient removal, sediment removal, flood control, and aquatic food and habitat).

Actions

- A. Amend zoning regulations and development standards to establish a minimum 100-foot stream buffer to protect rivers and streams when floodplains and adjacent steep slopes do not extend beyond either bank by 100 feet.
- B. Amend zoning regulations and development standards to establish a 50-foot management buffer as part of the RSCR surrounding floodplains and adjacent steep slopes. Specific criteria for allowable reductions in the 50-foot management buffer should be included to ensure that reductions do not adversely impact the other elements of the RSCR. The RSCR 50-foot management buffer will not be added to the 100-foot minimum stream buffer.

Examples of measures to help mitigate a reduction in the 50-foot management buffer:

- i. Reforestation of open areas adjacent to the stream and floodplain;
- ii. Increasing Tree Conservation Areas adjacent to the floodplain (especially when the floodplain is narrow);
- iii. Buffering streams and wetlands outside of the RSCR; and
- iv. Enhanced stormwater and erosion and sediment control measures.

- C. Develop and use incentives to encourage property-owners to establish and maintain a 100-foot minimum riparian stream buffer.

Permitted Uses in the RSCR

Permitted uses within the RSCR are intended to support or enhance the biological integrity and health of the river and stream corridor. These uses are intended to have minimal adverse effects on natural, environmental, and heritage resources. Development of such uses requires mitigating impacts while complementing the hydrologic processes of the river and stream corridors including flood protection and water quality. New uses should be limited to:

- a. Road crossings, rail crossings, bridges, and drive-way crossings
- b. Public water and sewer
- c. Local and regional stormwater management facilities within the minor floodplain river and stream corridor resource only (subject to BMP requirements)
- d. Public lakes and ponds (subject to BMP requirements)
- e. Public water supply reservoirs
- f. Historic and archaeological sites
- g. Paths and trails – including footpaths, biking or hiking paths, and horse trails (of a permeable material only)
- h. Passive recreation – limited to hiking, biking, horseback riding, picnicking, camping, climbing, hunting, fishing, and wildlife viewing
- i. Active recreation within the minor floodplain river and stream corridor resource only
- j. Agricultural activities, but not structures – including crop planting and harvesting and grazing (subject to appropriate BMP requirements)
- k. Silviculture – as required to care for forests and not commercial forestry (limited to forest preservation and tree planting, limited tree clearing and clearing of invasive species, tree trimming and pruning, and removal of individual trees (subject to appropriate BMP practice requirements)
- l. Planting native vegetation (subject to appropriate BMP requirements)
- m. Conservation – including stream restoration projects, wetland mitigation banks, facilities and activities; Adopt-A-Stream programs; scientific, nature, and archaeological studies; and educational programs
- n. Raised boardwalks

Strategy

- 2.3 Protect and improve stream quality and watershed health by decreasing the amount of stormwater runoff and pollutants from reaching local waters.

Actions

- A. Develop appropriate standards and regulations to protect natural streams from the harmful effects of increased stormwater volume, velocity, and pollutant loads resulting from development.
- B. Encourage stormwater BMPs on-site or as close to the area being treated as possible to prevent increased nutrient and sediment runoff.

- C. Establish incentives and/or a funding program for reforestation, SWM/BMP projects, and SWM/BMP retrofits.
- D. Support the retrofitting of older stormwater systems and the rehabilitation of degraded areas to enhance pollution removal capabilities and create open space amenities.
- E. Retain a site's natural hydrology and drainage patterns wherever possible when designing stormwater management systems; otherwise, promote the use of low-impact development to replicate natural hydrologic patterns and alleviate the strain on centralized systems.
- F. Support and incentivize reforestation for degraded forested areas in upper stream reaches that do not include Major Floodplain and promote natural regeneration within the limits of the Major Floodplain to mitigate the loss of native canopy coverage as a result of construction.
- G. Develop and maintain standards for activities that propose pollution sources such as the storing and dispensing of fossil fuels, chemical storage, and sale or transfer of potential contaminants.

Strategy

- 2.4. Protect and enhance impaired streams and their tributaries to improve water quality and provide ecological benefits while also providing opportunities for passive recreation.

Actions

- A. Encourage the implementation of enhanced pollutant control measures and watershed management strategies such as: downspout disconnection; tree planting/reforestation, especially within riparian areas; storm drain marking; stream restoration; wetland creation; adding BMPs; enhanced stormwater management ponds; enhanced pollution/erosion control measures; coordination and outreach with the Virginia Department of Transportation (VDOT) and owners associations on use of sand and anti-ice materials in snow removal/road clearing operations; and stormwater pond water quality enhancements.
- B. Actively participate in regional water quality initiatives to protect and improve water quality.
- C. Comply with the Virginia General Permit for stormwater discharges from small Municipal Separate Storm Sewer Systems (MS4 General Permit).
- D. Prepare and implement TMDL Action Plans, as necessary to meet TMDL requirements. The Action Plans, designed to improve the County's surface water quality may include working with other entities, such as the Loudoun Soil and Water Conservation District (LSWCD) and Virginia Cooperative Extension-Loudoun (VCE-Loudoun).

- E. Collaborate with the Department of Environmental Quality, the Goose Creek Scenic River Advisory Committee, and other stakeholder groups on any pollution impairment issues within streams and support volunteer water quality monitoring efforts and coordination of these efforts with federal, state, and local water quality data collection.

Surface Water Resources

Strategy

- 2.5. Protect rivers and public drinking water reservoirs to ensure a clean, safe, and adequate supply of drinking water.

Actions

- A. Protect public water supply reservoirs, Scenic Rivers, the Potomac River, and the Bull Run by establishing a 300-foot no-build buffer or the other elements of the RSCR buffer, whichever is greater. Areas outside of the no-build buffer are priority open space areas for the creation of a greenbelt. The greenbelt could be created through various mechanisms such as land donations, conservation easements, and other land conservation mechanisms. Specifically those areas outside of the no-build buffer identified as the 200-foot transitional buffer along the Bull Run and the 1,000-foot voluntary open space area along the Goose Creek, Goose Creek Reservoir, and Beaverdam Reservoir will be designated as priority open space areas.
- B. Protect lands that are critical to the quality of key water supplies through easement, fee simple acquisition, regulatory measures, or other sufficient measures. Restore filtration and erosion control functions through the re-naturalization and native revegetation of these areas.
- C. Develop and implement a watershed overlay district for all public water supply reservoir watersheds, establishing more stringent development guidelines and performance standards to protect water quality.
- D. Develop and implement a Potomac River shoreline management plan and seek to coordinate this effort with adjacent jurisdictions (local, state, and regional organizations, advisory boards, and citizen groups). This plan should include:
 - i. The boundaries of the study area,
 - ii. A comprehensive natural resources inventory,
 - iii. Existing and proposed private/public water access entry points,
 - iv. Policy recommendations for river corridor management and protection,
 - v. A process for integrating the participating groups, and
 - vi. A plan for acquiring and managing open space corridors along the Potomac River.
- E. Establish appropriate standards and land uses in consultation with Loudoun Water and/or incorporated towns to protect drinking water supplies.

- F. Develop a community-based Source Water Protection Plan in cooperation with Loudoun Water and other agencies and organizations.

Groundwater Resources

Strategy

- 2.6. Preserve and protect groundwater quantity and quality.

Actions

- | | |
|---|---|
| <p>A. Develop and implement a comprehensive groundwater protection strategy to ensure adequate and sustainable water supply.</p> <p>B. Develop and implement a comprehensive pollution management program to monitor and protect groundwater resources.</p> <p>C. Local wellhead protection plans will be taken into consideration during review of development applications to maintain drinking water quality and protect groundwater from contamination.</p> <p>D. Limit the installation of additional wells and limit the number of additional households and irrigation systems that are dependent on wells through water conservation efforts and through the use of communal and/or central water systems where feasible and as approved by Loudoun Water.</p> <p>E. Ensure the location, depth, and rate of extraction of individual wells do not impact the quality and quantity of municipal wells.</p> <p>F. Assess the recharge and consumption rates for groundwater in each watershed by analyzing data from groundwater level monitoring and stream flow measurements. If negative impacts are detected, the information will be presented to the Board of Supervisors for appropriate action.</p> <p>G. Develop standards for uses that consume and/or require the usage of large quantities of water in those areas that could affect neighboring wells and aquifers.</p> <p>H. Provide education to school children and homeowners on the use and consumption of groundwater for areas of the County that are not connected to the central water supply.</p> <p>I. Study best practices/guidelines to reduce impervious surfaces and minimize increases in post-development runoff peak rate, frequency, volume.</p> | <p>Additional Notes:</p> <ul style="list-style-type: none"> • The RSCR performance standards, BMP requirements, and list of permitted uses will apply to the no-build buffer, except adjacent to existing or planned drinking water reservoirs where stormwater management facilities are not permitted. • The limits of the 300-foot no-build buffer for reservoirs is measured from their projected high water mark where expansion is proposed. |
|---|---|

Soils and Geologic Resources

SGR Policy 3: Preserve and protect the County's soils, unique geologic characteristics, farmland, steep slopes, mountainsides, and ridgelines recognizing their sensitivity to land disturbance and development as well as their contribution to healthy ecosystems and the quality of life valued by residents and visitors.

Limestone Geology Areas

Strategy

- 3.1. Protect limestone geology areas susceptible to sinkholes, cavity collapse, ground slippage, pollution, and other hazards.

Actions

- A. Maintain performance standards for lands within areas underlain by limestone — including minimum setback distances from karst features (e.g., sinkholes and rock outcrops) —to ensure structural stability and prevent adverse impacts to environmental and public health.
- B. Limit density and intensity of development within areas underlain by limestone, especially on sites proximate to karst features.
- C. Require communal water and wastewater systems built to Loudoun Water standards for new development in areas underlain by limestone.
- D. In areas of the limestone overlay district and/or other areas where subsurface karst geology exists, require potable water supply systems that can be demonstrated to treat groundwater to a surface water level of treatment standard, following Loudoun Water's Engineering Standards Manual, as a condition of approval.
- E. Identify pollution sources and establish appropriate standards for reducing pollution in areas underlain by limestone.

Prime Agricultural Soils

Strategy

- 3.2. Preserve and protect prime farmland and agricultural soils, recognizing their importance to the overall economic health of the rural economy.

Action

- A. Develop a public education program that will focus on communicating advantages associated with private protection of Prime Agricultural Soils.
- B. Encourage the retention and conservation of prime agricultural soils within open space areas.
- C. The County will update, maintain, and make available the Countywide Prime

Agricultural Soils Map.

Steep Slopes, Moderately Steep Slopes and Mountainside Areas

Strategy

- 3.3. Protect steep slopes, ridgelines, and mountainside areas against destabilization, erosion, building and/or road failure, downstream flooding, and other hazards and to maintain the scenic and rural nature of these areas.

Actions

- A. Manage and regulate development in mountainside areas using performance standards and regulations to minimize negative environmental impacts; minimize land disturbance; protect the ridgelines; maintain woodlands, plant, and wildlife habitats; and preserve other natural features.
- B. Prohibit land disturbance on naturally occurring very steep slopes (greater than 25 percent grade and/or soil slope class of E), with limited exceptions such as access easements to existing lots where no other access is possible. Agricultural or silvicultural activities, excluding structures, may be allowed provided that a County approved Farm Management Plan or Forest Management Plan, whichever is applicable, is implemented. Apply performance standards to protect soils, vegetation, and other environmental features when roads are permitted or allowed by special exception.
- C. Apply performance standards to protect moderately steep slopes (15 to 25 percent grade and or soil slope class of D) to include BMPs and locational clearances for clearing and grading. Develop incentives to locate development outside of moderately steep areas. Limit clearing to only essential clearing that is necessary for home construction, road construction, and utility installation on moderately steep slopes.
- D. Preserve forests and native vegetation on very steep slopes.
- E. Protect ridgelines through updates to the Mountainside Development Overlay District, the development of a Ridgeline Protection Overlay District, and the prioritization of protecting such areas through open space easement acquisition.
- F. Require special exception approval for the subdivision of properties into three or more lots in Sensitive and Highly Sensitive Mountainside Areas.
- G. Seek the expansion of passive outdoor recreational opportunities in mountainside areas, including the development of public park sites and improving access to existing recreational facilities such as the Appalachian Trail.
- H. Review and amend zoning regulations and development standards to ensure consistency with the mountainside area policies.
- I. Establish performance standards for unavoidable development on questionable soils

as defined by the International Building Code.

Forests, Trees, and Vegetation

FTV Policy 4: Preserve, protect, and manage Loudoun County’s forests and trees for current and future use and enjoyment, recognizing these resources provide many benefits, such as improving air and water quality; offering important habitat for birds, small mammals and other wildlife; providing buffers between communities; conserving energy; reducing wind speed and redirecting airflow; and reducing stormwater runoff and soil erosion.

Strategy

- 4.1. Preserve, protect, and manage forest resources for their economic and environmental benefits.

Actions

- A. Require applicants to submit a Tree Cover Inventory as part of all development applications and, where applicable, require applicants to submit a Tree Conservation Plan for designated Tree Conservation Areas; such Tree Conservation Plan should demonstrate a management strategy that ensures the long-term sustainability of these designated areas and address the removal and monitoring of invasive woody vegetation and insects.
- B. Incentivize and encourage the preservation of existing trees within required landscape buffer areas and for screening of uses.
- C. Require the removal of invasive plant species during the development process.
- D. Develop and adopt a Tree Preservation Ordinance.
- E. Inventory and map trees and native vegetative resources to be preserved or managed in accordance with County standards and create and maintain a database of these resources to include, but not be limited to, old growth forests, significant tree stands, specimen trees, heritage trees, and State or National Champion trees.
- F. Participate in community tree projects such as the Arbor Day Foundation’s Tree City USA Program.

Strategy

- 4.2. Promote tree planting and preservation to reduce the heat island effect, manage stormwater run-off, and improve water quality, air quality, and wildlife habitat.

Actions

- A. Prioritize the planting of native vegetation, specifically along those corridors that provide connections to other natural, environmental, and heritage resources.

- B. Develop Countywide goals and objectives for the creation, maintenance, and preservation of the County's tree canopy.

Historic, Archaeologic, and Scenic Resources

HASR Policy 5: Loudoun County's distinctive cultural landscapes encompass scenic and heritage resources, including Scenic Rivers and Byways, historic buildings, archaeological sites, battlefields, and historic cemeteries. These resources are foundational elements of the County's changing landscape that together tell the story of the formation and settlement of the County. The County will protect and enhance these resources, recognizing them as relevant, character-defining elements of both the natural and built environments.

Strategy

- 5.1. Preserve cultural and scenic character through conservation and preservation of designated heritage areas, battlefields, cemeteries, scenic corridors, Scenic Rivers, the Potomac River, significant geological features, archaeological sites, historic structures and their settings. Convey the benefit of these resources to the public through public education in collaboration with private landowners and preservation organizations.

Actions

- A. Evaluate land development applications within the context of this Plan as well as those more specific policies contained in the *Heritage Preservation Plan*.
- B. Evaluate the *Heritage Preservation Plan* every five years and update if necessary.
- C. Require an archaeological and historic resources survey for all development applications. This survey must include a plan for recordation of identified resources and measures for preservation, mitigation, and adaptive reuse. The County will maintain a repository for artifacts recovered from required surveys; such artifacts will be used for research and public education purposes.
- D. The County will update its cultural resource inventory through the land development process and County-sponsored historic surveys.
- E. Evaluate the historic or archaeological value of inventoried resources based on criteria set forth in the Secretary of the Interior's Standards for Archaeology and Historic Preservation, which include historic context and site integrity. The County will evaluate resources for consideration for state and National Registers. Identify, through survey and community outreach, locally important historic and archaeological resources that meet criteria for listing on the County Heritage Register as outlined in the *Heritage Preservation Plan*.
- F. Identify, delineate, and map historic cemeteries, burial grounds, and graves to ensure

they are protected from destruction or neglect. Ensure that adequate buffers are provided around these sites to protect them during the development process.

- G. Identify African American and Native American cultural resources, document them in the County's database of heritage resources, and create policies and programs that protect, preserve, and interpret these resources for the benefit of County residents.
- H. Maintain the County's database by using the inventory of cultural resources as a dynamic body of data to be reevaluated as needed.
- I. Conduct a staff assessment to determine historic significance prior to issuing a demolition permit for a structure that is 50 years old or older.
- J. Work with local communities to protect and enhance the character of cultural landscapes and historically significant sites through the designation of County Historic and Cultural Conservation Districts.
- K. Preserve and protect significant cultural and scenic resources from development impacts by promoting private or public acquisition and/or conservation easements.
- L. Where consistent with the applicable provisions of the Virginia Code, applicants may proffer cash contributions to the County for the enhancement and/or improvement of historic features within Loudoun to fulfill the open space guidelines described in Chapter 6 if the historic feature is in the same planning subarea identified in the latest Capital Needs Assessment and the County agrees to accept such contribution.
- M. Prioritize the adaptive reuse of historic structures that are of local, regional, or national significance as the primary method of preserving the County's diverse collection of historic architecture within the framework of sustainable development.
- N. Amend zoning regulations and development standards to ensure the viability of adaptive reuse, particularly in the County's villages where the ability to reuse historic structures is vital to the historic character and vitality of these communities.
- O. Prepare and implement corridor management plans, including identifying and defining viewsheds for the County's Scenic Rivers to protect their natural and scenic quality.
- P. Prohibit the diversion of Scenic Rivers under any circumstances.

A viewshed analysis for a Scenic River typically involves looking at both the view from the resource itself as well as the view towards the resource.

Natural Heritage Resources

NHR Policy 6: Preserve, protect, and create a network of privately and publicly protected open space, favoring large contiguous areas rather than smaller disconnected areas; maintaining natural, environmental, and heritage resource assets; preventing habitat fragmentation; and reinforcing the unique character of the diverse communities in the County.

Strategy

- 6.1. Conserve and protect natural heritage resources including rare, threatened, and endangered plant and animal species; species of greatest concern; exemplary natural communities, habitats, and ecosystems; and other natural features of the County.

Actions

- A. Use open space requirements, passive recreation, nature preserves, incentives, and regulations to protect areas of natural biodiversity and rare, threatened, and endangered plant and animal species, and plant communities in keeping with the federal Endangered Species Act and to foster the implementation of the Virginia Wildlife Action Plan.
- B. Require development applications to identify Loudoun County's natural heritage resources through coordination with the Virginia Department of Conservation and Recreation (VDCR) – Division of Natural Heritage and the Virginia Department of Game and Inland Fisheries (VDGIF). For those development applications that have a likely presence of one or more natural heritage resource, the County will require the applicant to conduct relevant assessments. In cases where the presence of the species is identified, the County will require the applicant to develop and submit a plan for impact avoidance.
- C. Ensure that the study of natural heritage resources is conducted by qualified research organizations such as the VDCR and VDGIF, and develop implementation strategies for the preservation of identified natural heritage resources.

Wildlife Habitats

Strategy

- 6.2. Conserve and protect wildlife habitats, wildlife travel corridors, and access to streams and water sources through the preservation of natural resources such as native vegetation, forest cover, woodlands, floodplains, streams and stream corridors, wetlands, and undeveloped areas associated with steep slopes.

Actions

- A. Require development proposals to create links to adjacent open space and natural resources to help prevent habitat fragmentation and foster biodiversity.

- B. Identify essential wildlife corridors and encourage protection of these areas through conservation easements acquired by the County or others, participation in the Open Space Preservation Program, development design, and other means.
- C. Ensure that new development, redevelopment, and infill development incorporates existing native vegetation and plantings of native vegetation into the landscape design.
- D. Encourage the preservation and plantings of native vegetation to protect pollinators, migrant birds, and other wildlife.
- E. Promote and support the establishment of public and private nature preserves throughout the County as part of the protection and enjoyment of natural, environmental, and heritage resources.

Complementary Elements

CE Policy 7: The County promotes healthy air and low levels of noise and light pollution as essential elements for current and future residents.

Strategy

- 7.1. Preserve and protect air quality.

Actions

- A. Comply with the requirements of the Federal Clean Air Act Amendments of 1990 through support of the State Implementation Plan (SIP).
- B. Evaluate and implement methods to reduce emissions of airborne pollutants including particulates, greenhouse gases, ozone precursors, and other gases known to adversely affect human and environmental health.

Strategy

- 7.2. Protect noise-sensitive uses.

Actions

- A. Continue to support the Washington Dulles International and Leesburg Executive Airports by continued and complete prohibition of new residential and other noise-sensitive land uses from the areas located within the Ldn 65 or higher aircraft noise impact area for both airports and by allowing only non-noise-sensitive land uses within these contours.

The Airport Noise Impact Area (ANIA) consists of three (3) components or aircraft noise impact areas:

- (i) Ldn 65 or higher;*
- (ii) Ldn 60-65; and*
- (iii) Within one (1) mile of Ldn 60*

- B. Continue to work with the Metropolitan Washington Airports Authority to understand and minimize the effects of airport operations and routes on existing noise-sensitive areas within the Ldn 60-65 aircraft noise impact area for Washington Dulles International Airport and minimize residential and noise-sensitive development in noise sensitive areas.
- C. Prohibit residential encroachment into the areas designated as within the Ldn 65 or higher aircraft noise impact area to ensure that residential development will not create pressure for reductions in the intensity of service or prohibit the expansion of service at the airport.
- D. Continue to enforce and update with the most current information, as appropriate, the Airport Impact Overlay District included as part of the Loudoun County Zoning Ordinance.
- E. Consider the 2019 Washington Dulles International Noise Contour Map Update when reviewing land development applications surrounding the airport.
- F. Consider replacing the existing noise contours for Washington Dulles International Airport to reflect the noise contours in the 2019 Washington Dulles International Noise Contour Map Update. **[Implemented with CPAM-2021-0001, ZMAP-2021-0011, and ZOAM-2021-0002, Airport Impact Overlay District Update. However, the Ldn 65 or higher aircraft noise impact area is revised to exclude areas already approved for residential development through proffered rezoning.]**
- G. Require roadway noise studies for residential, institutional, or other noise sensitive uses adjacent to existing or proposed arterial and major collector roads to ensure that forecasted noise levels fall within acceptable levels, or can be abated to meet County standards (See also *Loudoun County 2019 Countywide Transportation Plan*, Chapter 7, Environmental and Heritage Resources).
- H. Allow approved residential rezonings that were located outside of the Ldn 65 or higher aircraft noise impact area at the time of approval, but projected to be within the Ldn 65 or higher noise impact area by the 2019 Washington Dulles International Noise Contour Map Update, to develop in accordance with their approval. Such rezonings will be designated within the Ldn 60-65 aircraft noise impact area.
- I. Require disclosure by property owners to prospective buyers of dwellings within the Airport Noise Impact Area (ANIA) that the property may be impacted by airport noise.

Strategy

7.3. Prevent light pollution.

Actions

- A. Update lighting standards to achieve the following:
 - i. Promote the use of lighting for convenience and safety while minimizing light pollution;
 - ii. Promote a glare-free environment through proper lighting performance standards to improve visibility and enhance public safety;
 - iii. Promote appropriate lighting standards to conserve energy;
 - iv. Develop appropriate lighting standards to prohibit unnecessary and intrusive light trespass that detracts from the beauty and view of the night sky; and
 - v. Promote the International Dark-Sky Association's Dark Sky standards to prevent light pollution.

Sustainability

SUS Policy 8: Promote sustainability efforts throughout the County.

Strategy

- 8.1. Support sustainability practices within the Loudoun County Government.

Actions

- A. Update and implement the County Energy Strategy (CES) to account for rapid growth in population and high energy demand uses, technological changes allowing improved energy storage, changing renewable energy markets, and the impacts of climate change.
- B. Continue to evaluate the energy demands of government buildings as well as transportation needs and develop plans for energy efficiency.
- C. Encourage benchmarking the energy use of existing and planned County buildings to establish a baseline for energy demand estimates.
- D. Use the data from benchmarking the energy use to set policy and regulations in the County.
- E. Whenever feasible, build County-constructed facilities to LEED Silver, or equivalent, standards.
- F. Continue to evaluate all sustainability efforts and improve efforts as new options and technologies become available.
- G. Continue to monitor the efforts of MWCOG.
- H. Support Loudoun Water in the expansion of the reclaimed water network.

- I. Incorporate natural, environmental, and heritage resources and BMPs into County Energy Strategy.
- J. Prioritize government purchase and use of goods and services that have reduced impacts to human and environmental health.
- K. Prioritize the use of Loudoun farm products in government purchase of food.
- L. Develop a Sustainability Plan for the County that provides the framework to balance economic development, social well-being, and environmental health.
- M. Consider providing electric car charging stations at newly constructed County-constructed facilities.

Strategy

- 8.2. Support energy efficient practices for all in Loudoun County.

Actions

- A. Evaluate the energy demands of residential and non-residential buildings, including data centers as well as transportation needs and develop plans for energy efficiency.
- B. Research and support opportunities for micro-grid energy and district energy systems.
- C. Encourage the use of Commercial Property Assessed Clean Energy (C-PACE) and research and support residential PACE program.
- D. Prioritize public investment in energy efficient, clean products and infrastructure.

Strategy

- 8.3. Support sustainable economic practices within Loudoun County to strengthen economic growth and innovation.

Actions

- A. Create partnerships with universities and private sector companies to foster growth of a sustainable economy that supports workers and students in the advanced technology and science industries.
- B. Promote the production and access to sustainable, healthy local food.
- C. Support and expand community gardens throughout the County.

SUS Policy 9: Encourage sustainable development practices, including long-term water conservation, green building principles, sustainable site design, renewable energy, preservation and adaptive re-use of historic structures, and integrated

energy management planning.

Strategy

- 9.1. Promote water conservation through innovative, cost-effective reuse systems, domestic water saving devices, and low impact development techniques, which integrate hydrologically functional designs with methods for preventing pollution and educational programs.

Actions

- A. Educate and encourage the harvesting of rainwater for non-potable use, such as landscape irrigation.
- B. Establish incentives for sustainable development.

Strategy

- 9.2. Promote the use of salvaged, recycled, or locally produced materials whenever possible.

Strategy

- 9.3. Evaluate the establishment of Eco-districts within the County.

Strategy

- 9.4. Promote green building standards and green building.

Strategy

- 9.5. Support renewable energy.

Actions

- A. Adopt solar zoning and permitting best practices for accessory use solar development.
- B. Become certified as a “solar-ready” community under the Department of Energy’s SolSmart program.
- C. Support solar farms with locational criteria to be identified.

Reference Maps

Natural and Environmental Resources (Map #2018-141)

River and Stream Corridor Resources (Map #2018-142)

Watersheds (Map #2018-143)

Historic Districts (Map #2018-144)

Airport Noise Impact Area (Map #2023-023)

African American Historic Communities (Map #2018-201)

Impaired Streams (Map #2018-203)

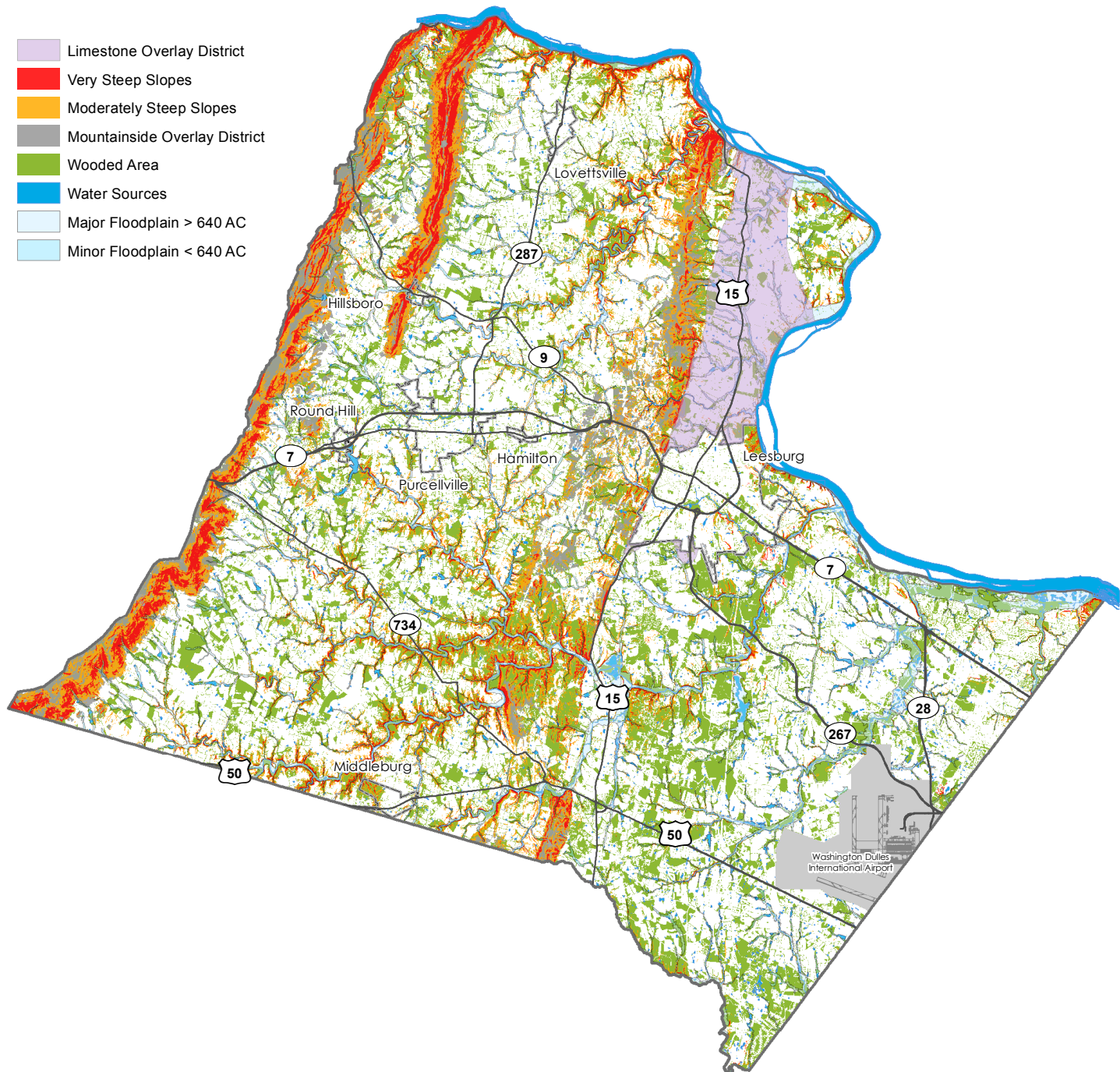
Limestone Overlay District (Map #2018-204)

Countywide Prime Agricultural Soils Map (Map #2019-262)

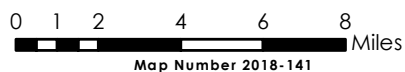
Loudoun County
Natural & Environmental Resources
 2019 General Plan



- Limestone Overlay District
- Very Steep Slopes
- Moderately Steep Slopes
- Mountainside Overlay District
- Wooded Area
- Water Sources
- Major Floodplain > 640 AC
- Minor Floodplain < 640 AC



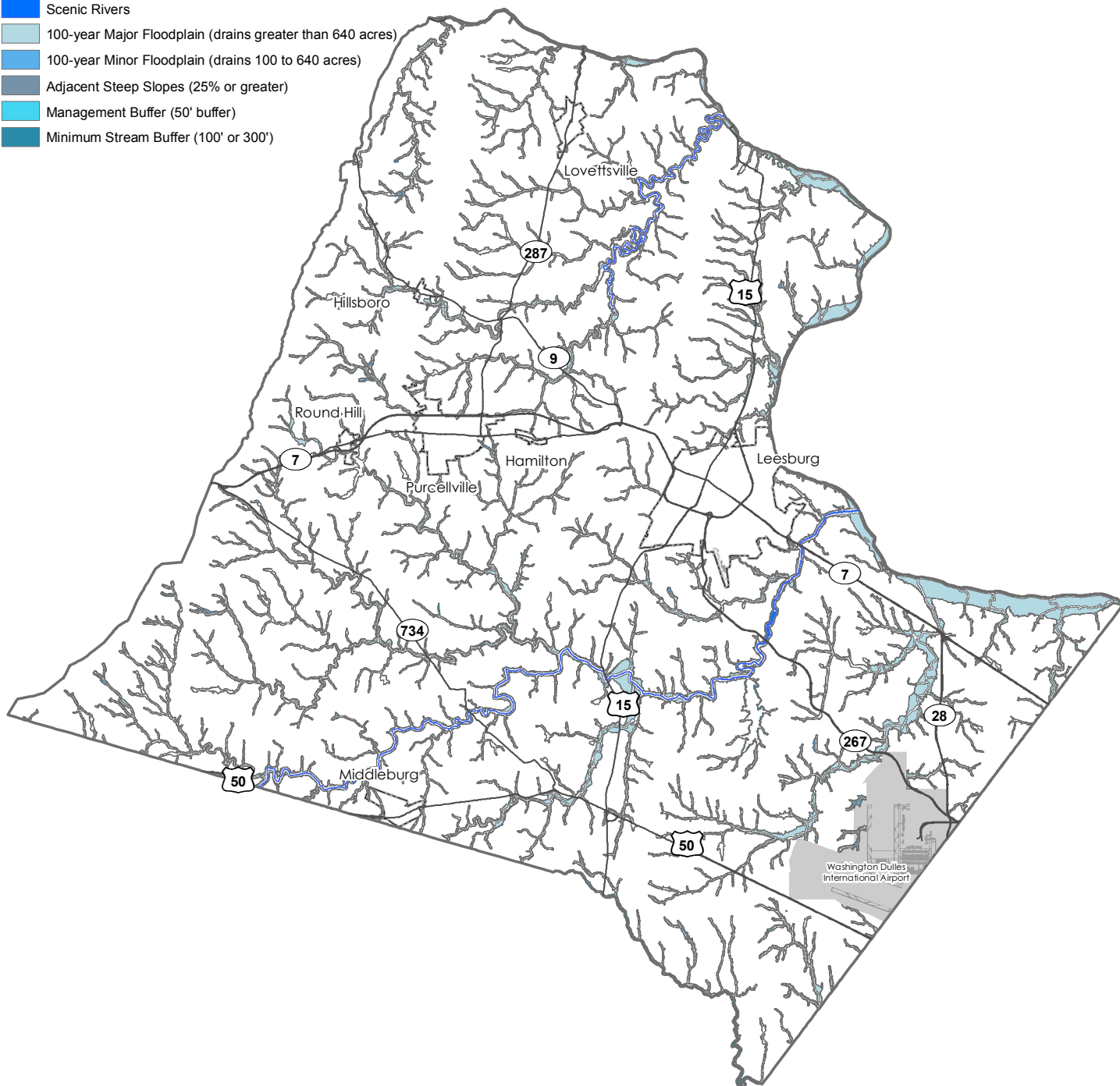
Loudoun County IS NOT LIABLE for any use of or reliance upon this map or any information contained herein. While reasonable efforts have been made to obtain accurate data, the County makes no warranty, expressed or implied, as to its accuracy, completeness, or fitness for use of any purpose.



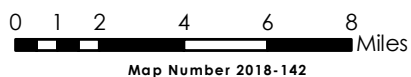
Loudoun County
**River and Stream
 Corridor Resources**
 2019 General Plan

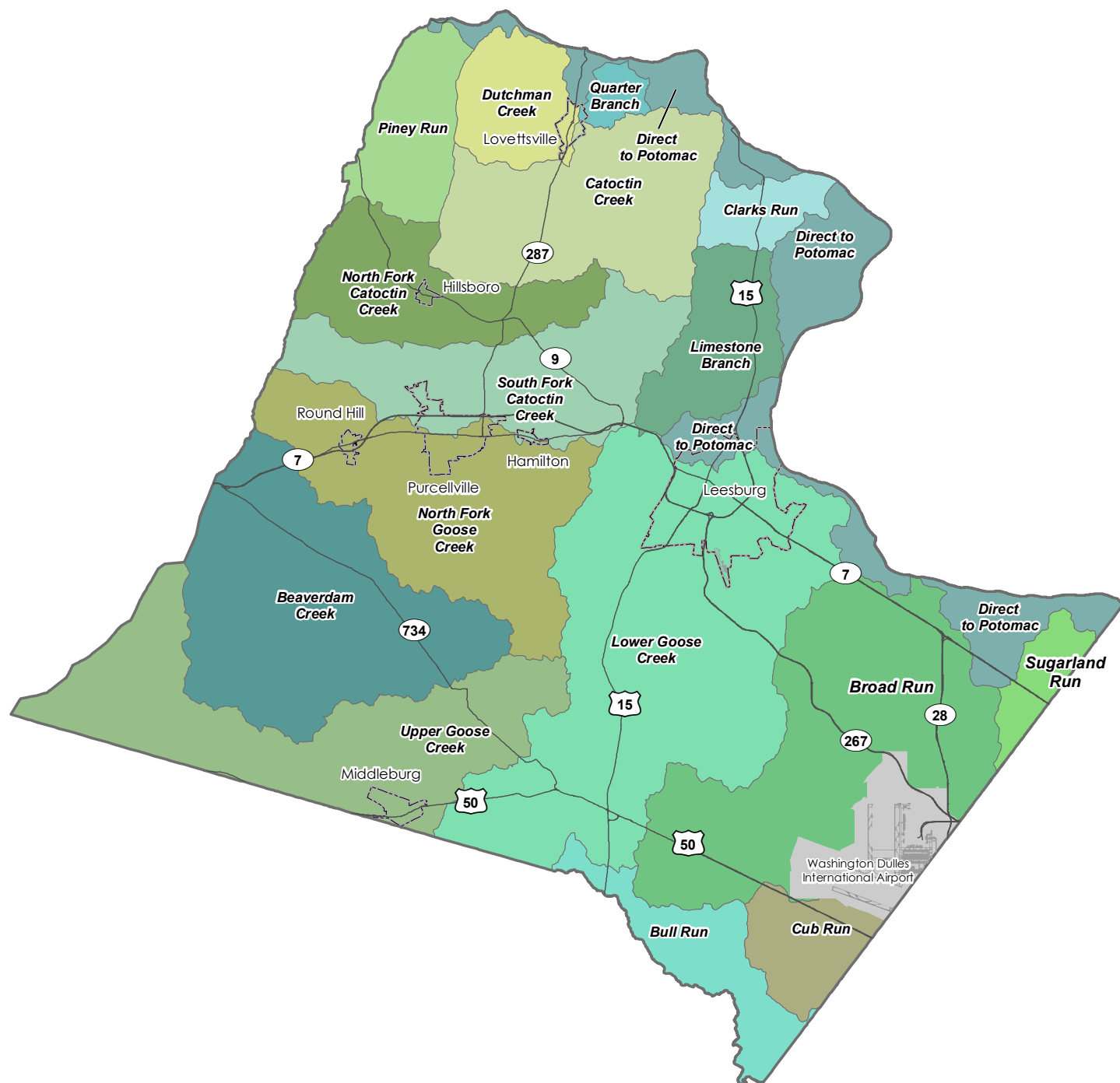


- Scenic Rivers
- 100-year Major Floodplain (drains greater than 640 acres)
- 100-year Minor Floodplain (drains 100 to 640 acres)
- Adjacent Steep Slopes (25% or greater)
- Management Buffer (50' buffer)
- Minimum Stream Buffer (100' or 300')

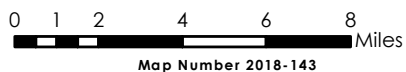


Loudoun County IS NOT LIABLE for any use of or reliance upon this map or any information contained herein. While reasonable efforts have been made to obtain accurate data, the County makes no warranty, expressed or implied, as to its accuracy, completeness, or fitness for use of any purpose.





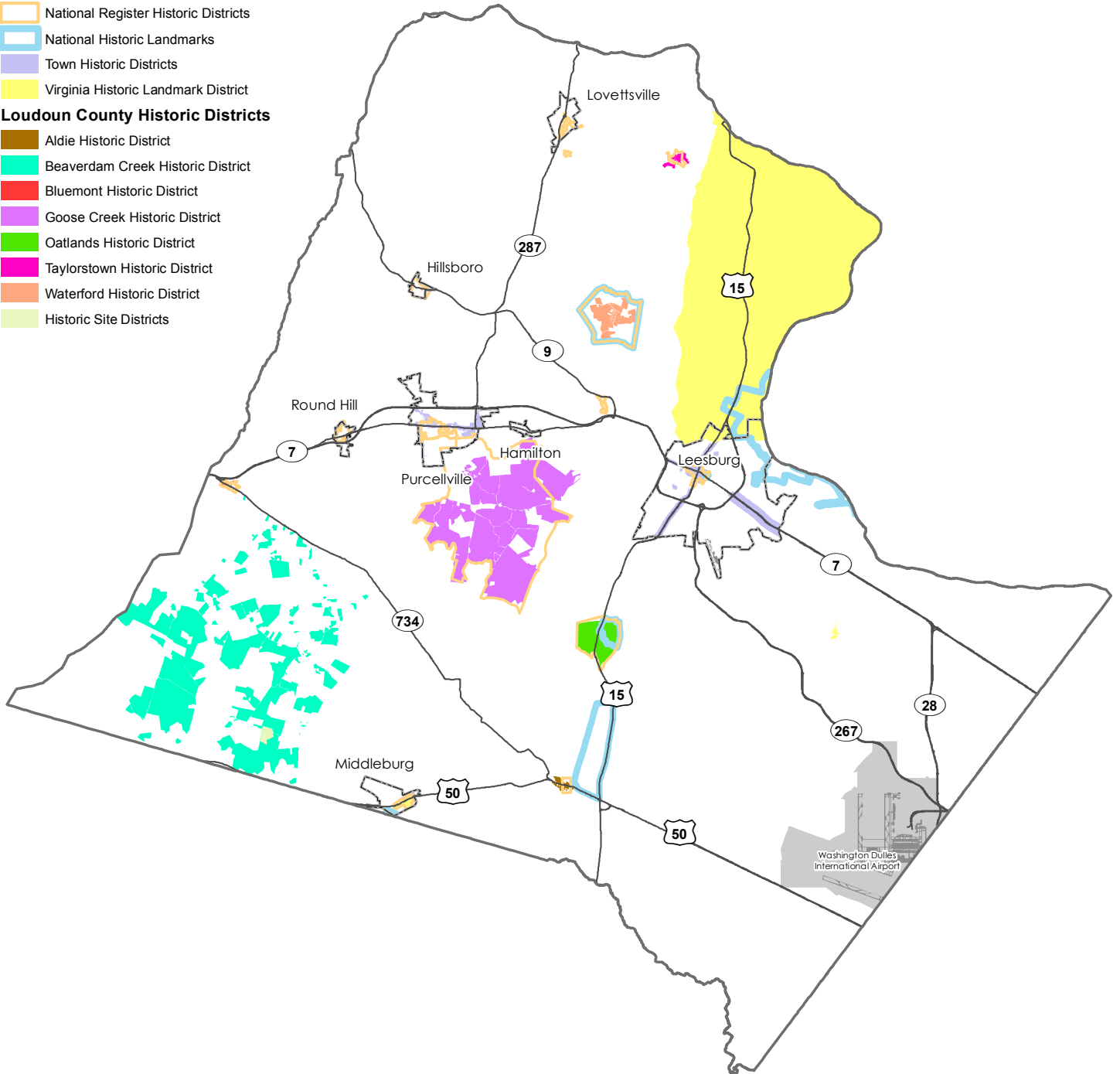
Loudoun County IS NOT LIABLE for any use of or reliance upon this map or any information contained herein. While reasonable efforts have been made to obtain accurate data, the County makes no warranty, expressed or implied, as to its accuracy, completeness, or fitness for use of any purpose.



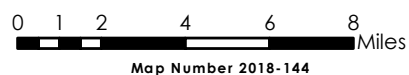
Loudoun County
Historic Districts
 2019 General Plan

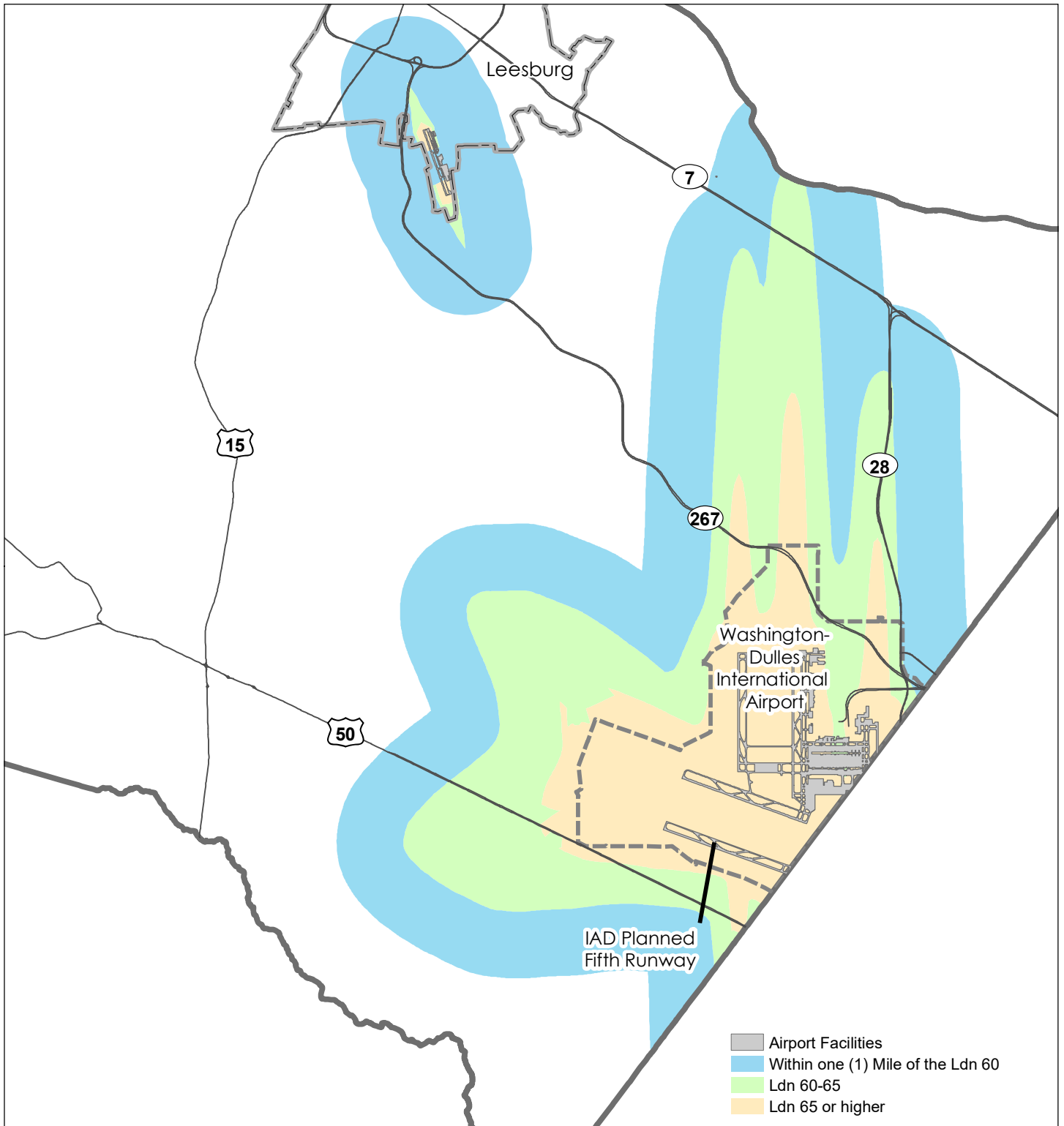


- National Register Historic Districts
- National Historic Landmarks
- Town Historic Districts
- Virginia Historic Landmark District
- Loudoun County Historic Districts**
- Aldie Historic District
- Beaverdam Creek Historic District
- Bluemont Historic District
- Goose Creek Historic District
- Oatlands Historic District
- Taylorstown Historic District
- Waterford Historic District
- Historic Site Districts

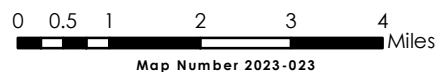


Loudoun County IS NOT LIABLE for any use of or reliance upon this map or any information contained herein. While reasonable efforts have been made to obtain accurate data, the County makes no warranty, expressed or implied, as to its accuracy, completeness, or fitness for use of any purpose.





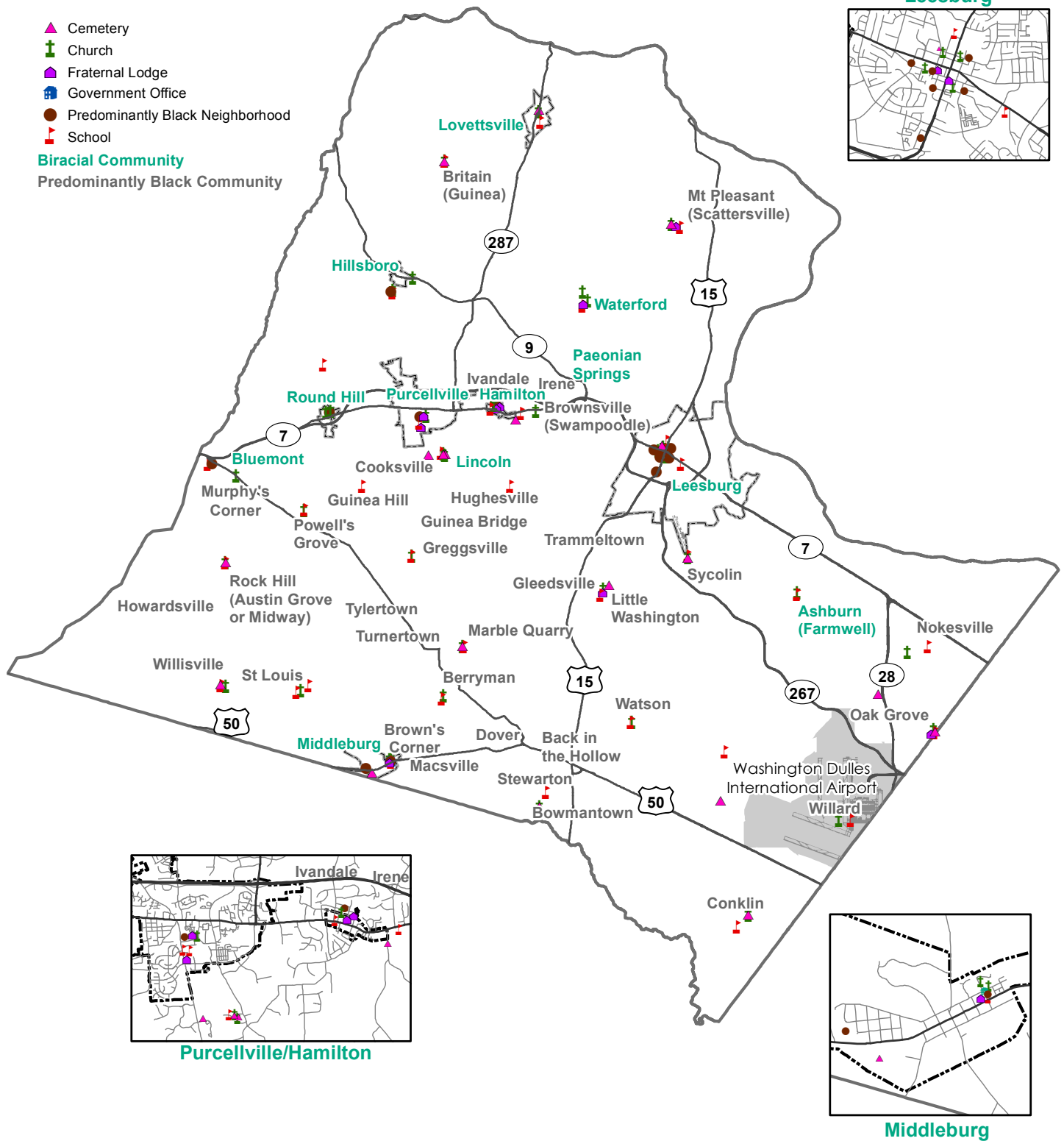
Loudoun County IS NOT LIABLE for any use of or reliance upon this map or any information contained herein. While reasonable efforts have been made to obtain accurate data, the County makes no warranty, expressed or implied, as to its accuracy, completeness, or fitness for use of any purpose.



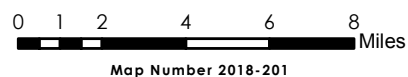
Loudoun County
**African American
 Historic Communities**
 2019 General Plan



- ▲ Cemetery
- ✚ Church
- ✚ Fraternal Lodge
- 🏛 Government Office
- Predominantly Black Neighborhood
- 🏫 School
- Biracial Community**
- Predominantly Black Community**



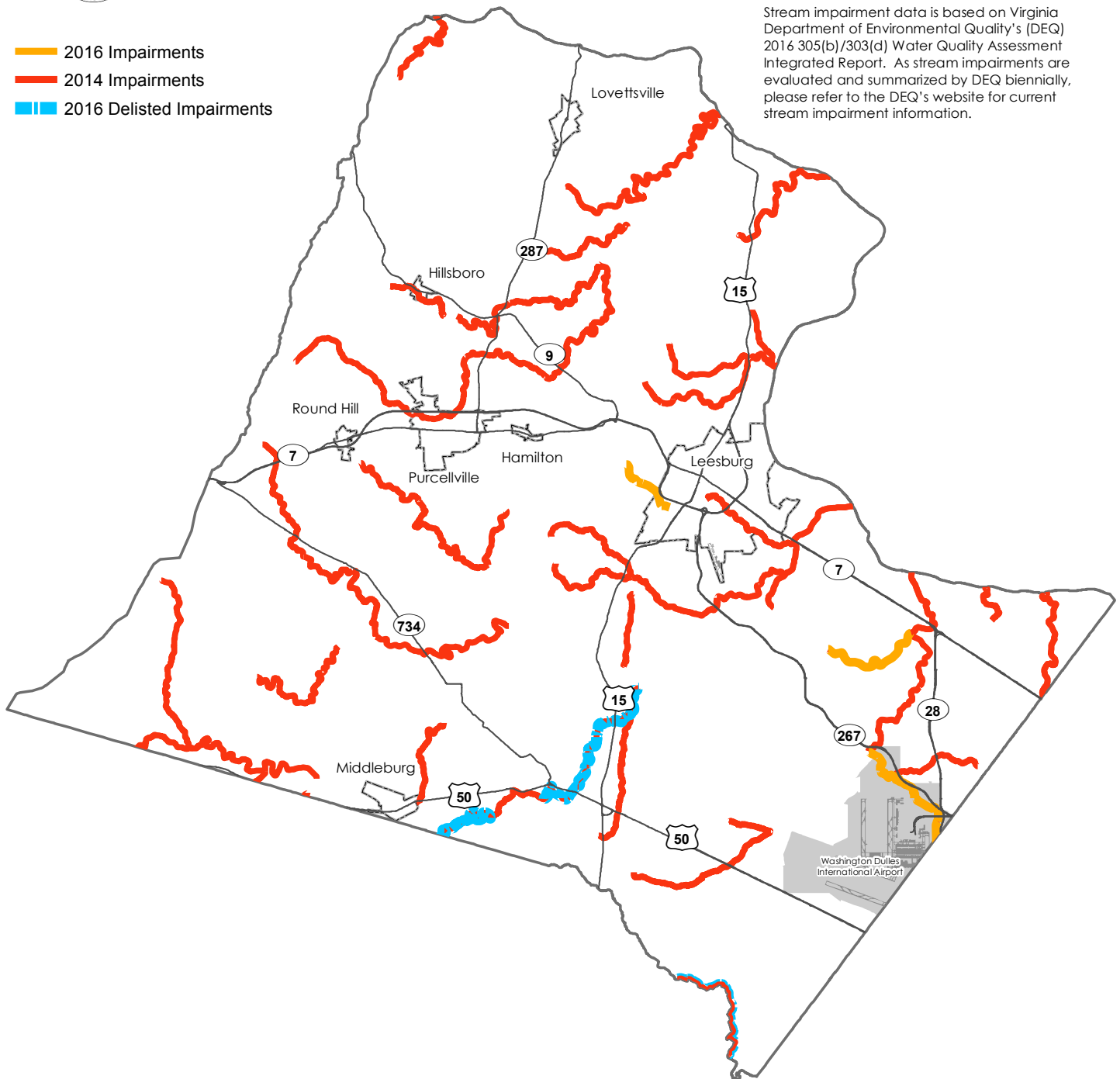
Loudoun County IS NOT LIABLE for any use of or reliance upon this map or any information contained herein. While reasonable efforts have been made to obtain accurate data, the County makes no warranty, expressed or implied, as to its accuracy, completeness, or fitness for use of any purpose.



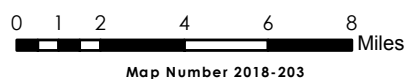


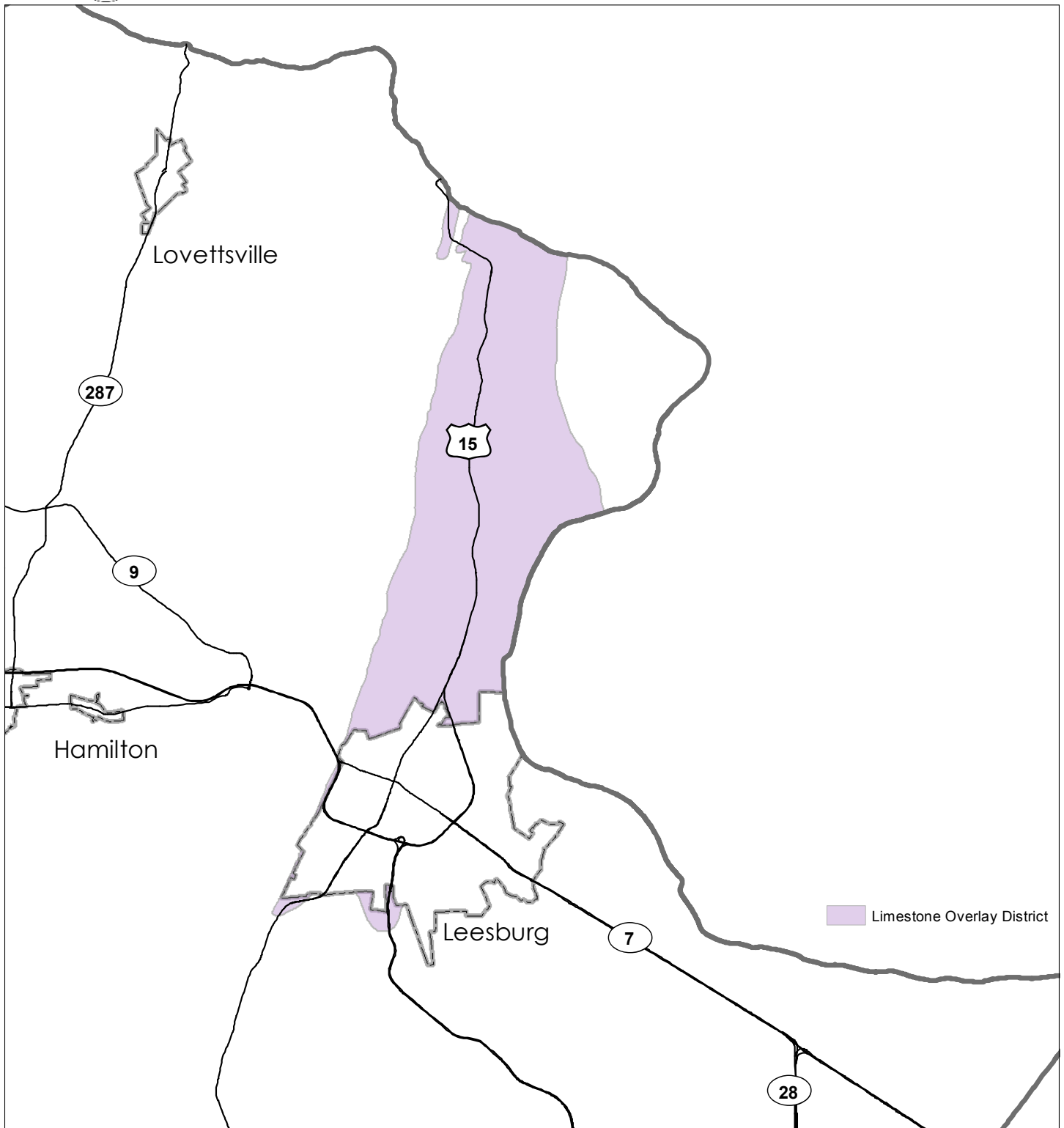
- 2016 Impairments
- 2014 Impairments
- 2016 Delisted Impairments

Stream impairment data is based on Virginia Department of Environmental Quality's (DEQ) 2016 305(b)/303(d) Water Quality Assessment Integrated Report. As stream impairments are evaluated and summarized by DEQ biennially, please refer to the DEQ's website for current stream impairment information.

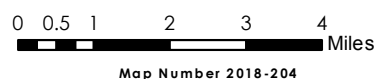


Loudoun County IS NOT LIABLE for any use of or reliance upon this map or any information contained herein. While reasonable efforts have been made to obtain accurate data, the County makes no warranty, expressed or implied, as to its accuracy, completeness, or fitness for use of any purpose.





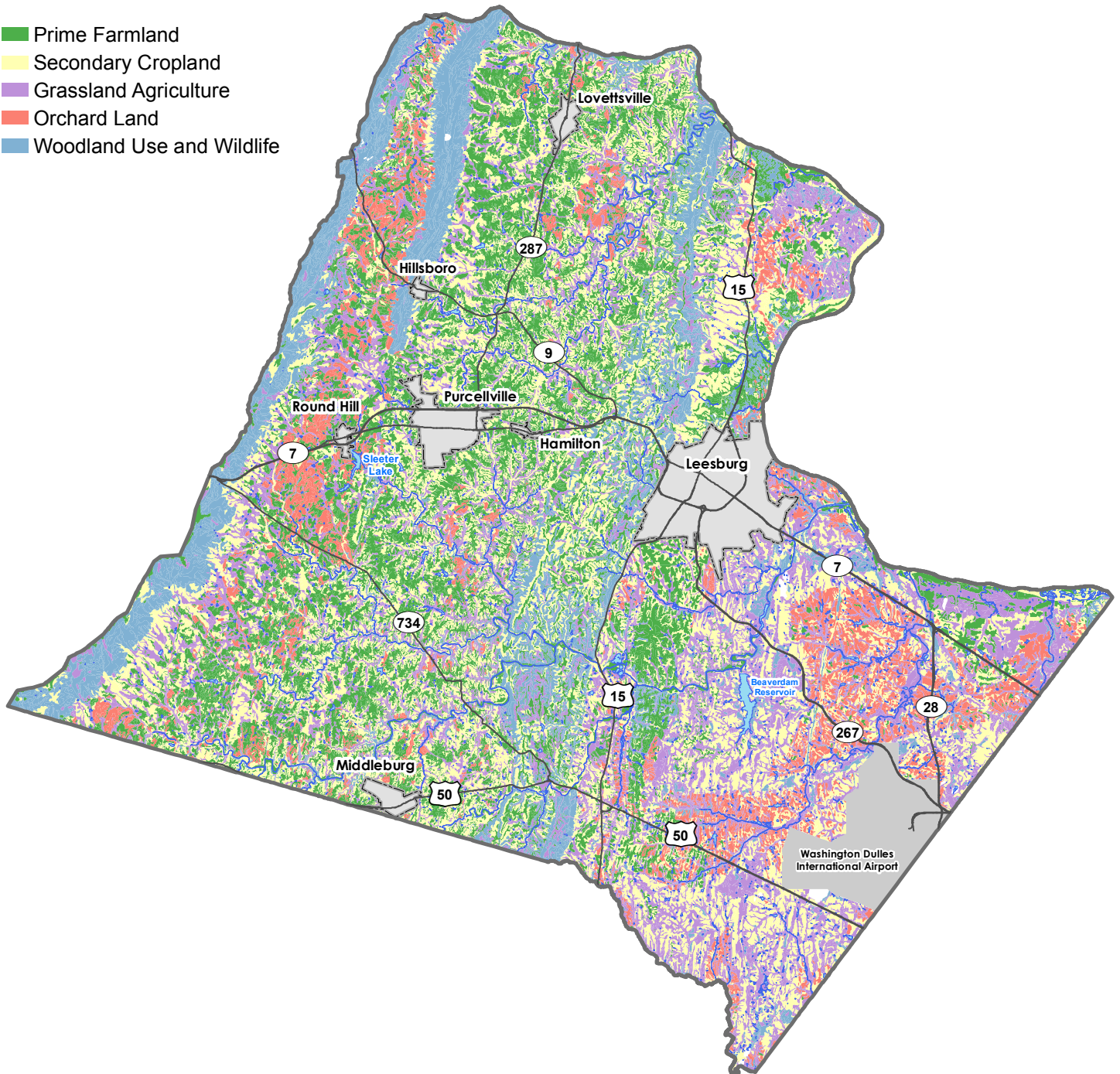
Loudoun County IS NOT LIABLE for any use of or reliance upon this map or any information contained herein. While reasonable efforts have been made to obtain accurate data, the County makes no warranty, expressed or implied, as to its accuracy, completeness, or fitness for use of any purpose.



Loudoun County
**Prime
Agricultural Soils**
2019 General Plan



- Prime Farmland
- Secondary Cropland
- Grassland Agriculture
- Orchard Land
- Woodland Use and Wildlife



Loudoun County IS NOT LIABLE for any use of or reliance upon this map or any information contained herein. While reasonable efforts have been made to obtain accurate data, the County makes no warranty, expressed or implied, as to its accuracy, completeness, or fitness for use of any purpose.

