

Lyme Disease in Loudoun County



Results from a Survey of Reported
Cases 2003-2006

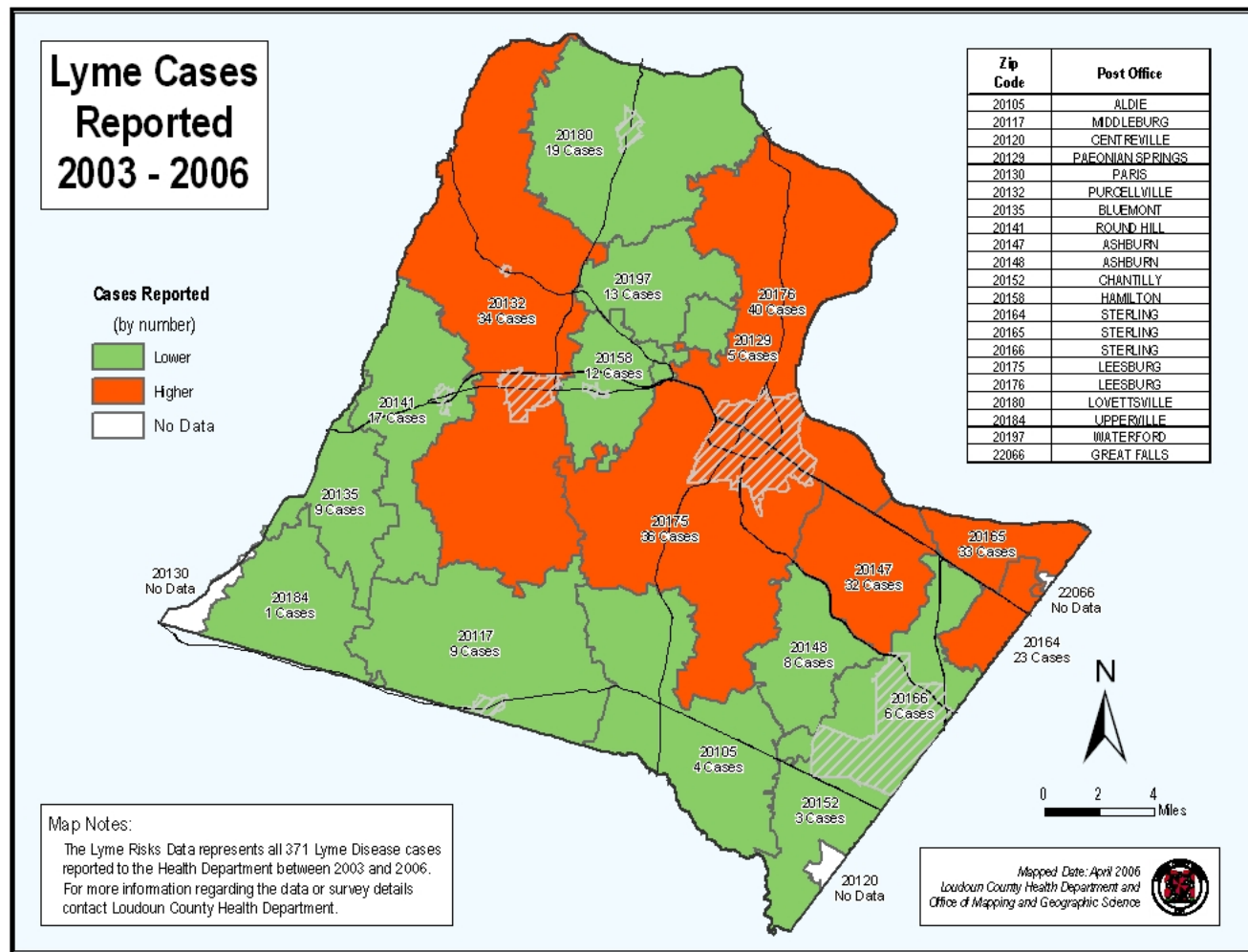


Study

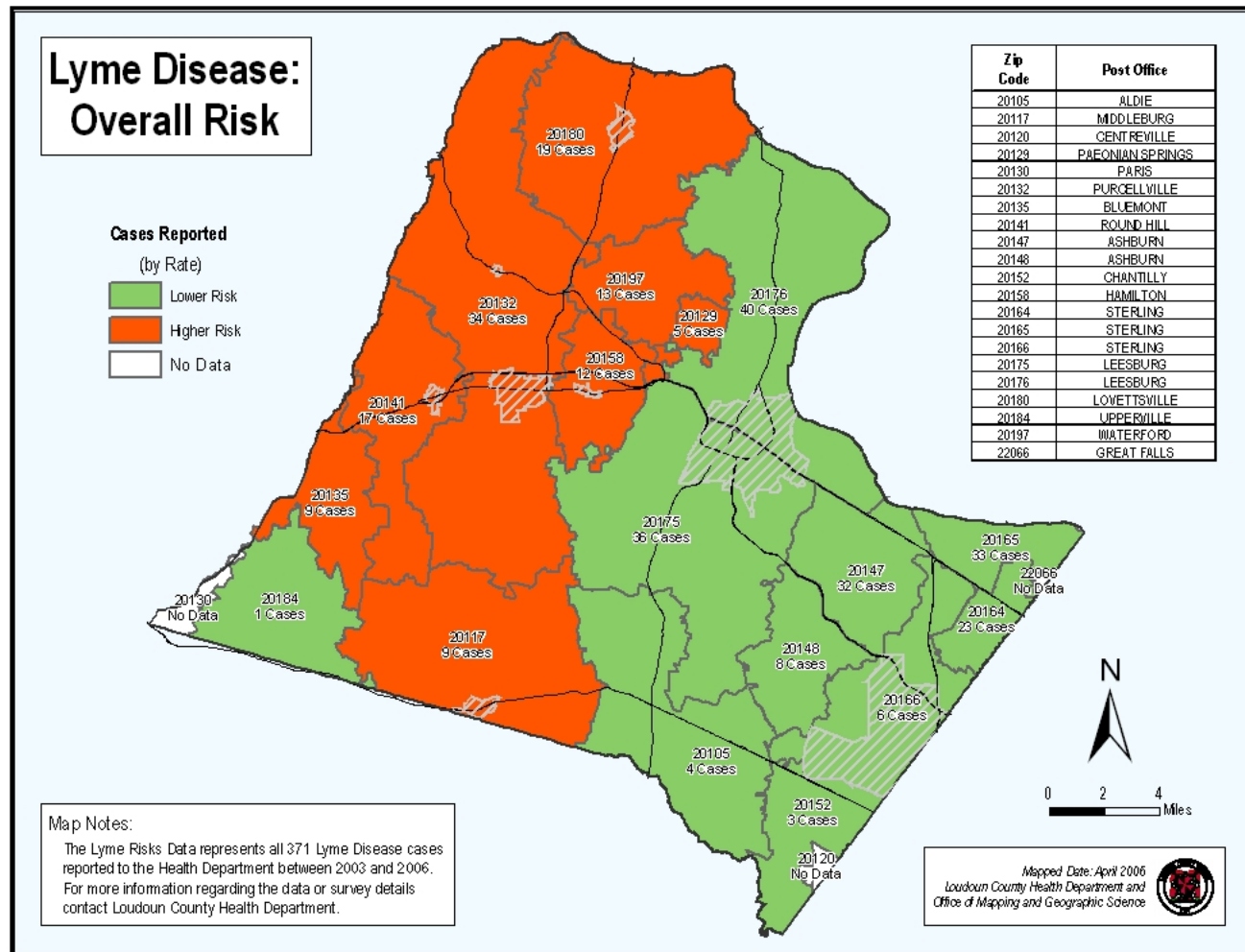
- Objective: To determine the risk factors for contracting Lyme disease in Loudoun County
- 371 people with Lyme were reported to the Loudoun County Health Department between January 2003 and February 2006
- Surveys were mailed to all 371 people
- 184 valid responses (50.6%) were returned



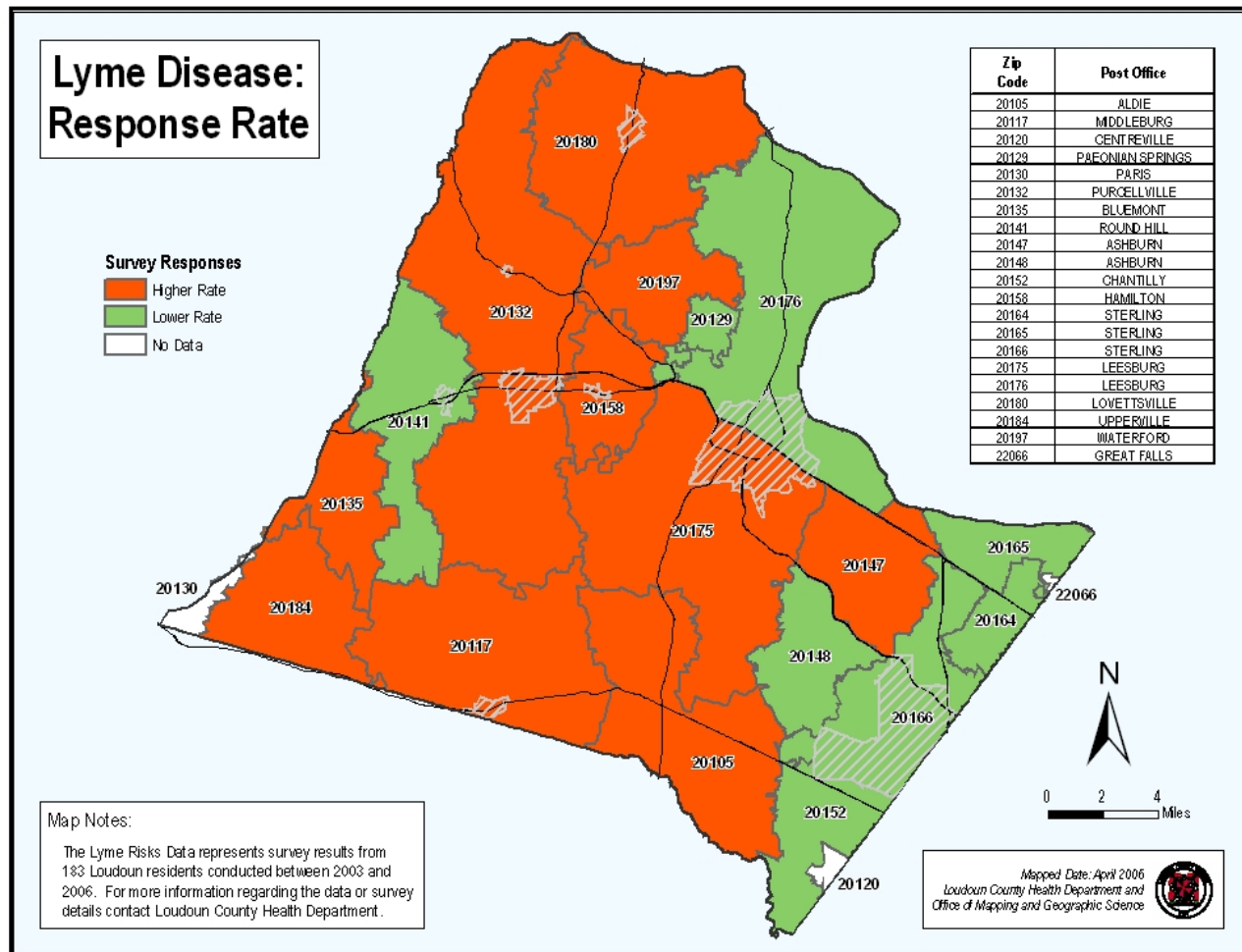
Population



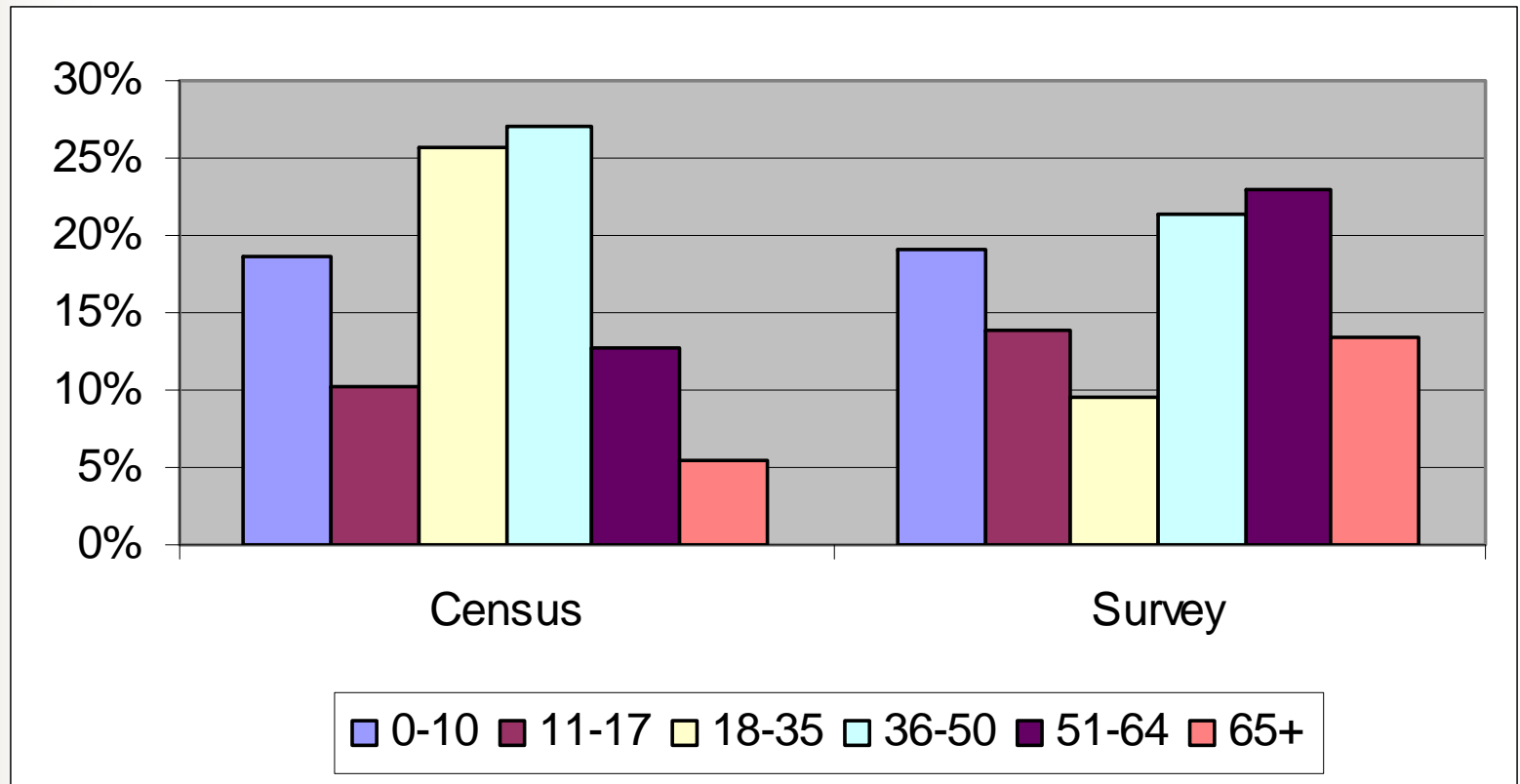
- Lyme cases were reported from all Loudoun zip codes



- Western Loudoun residents were at higher risk for having Lyme disease reported



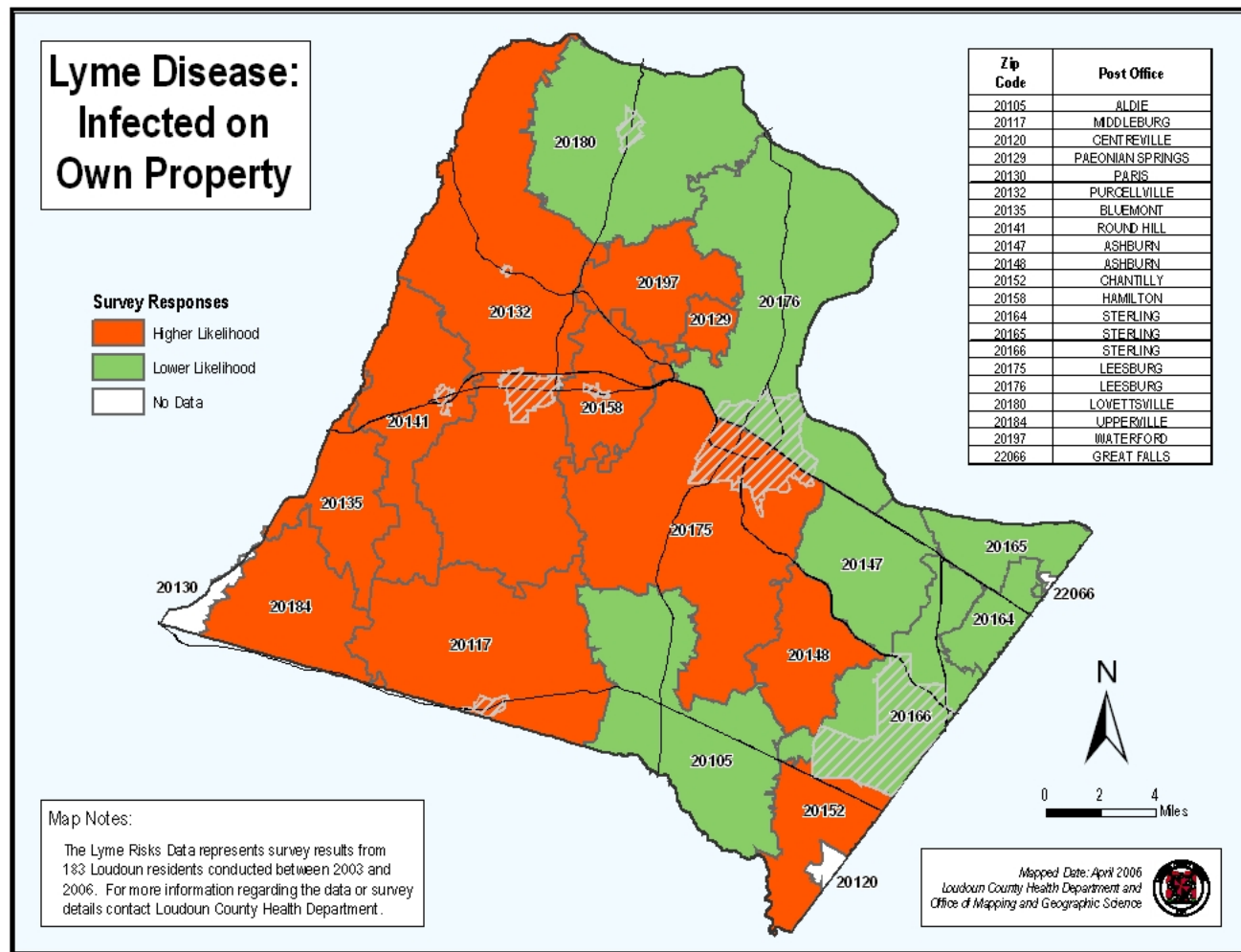
- Western residents were slightly more likely to respond to the survey
- 50.5% were male



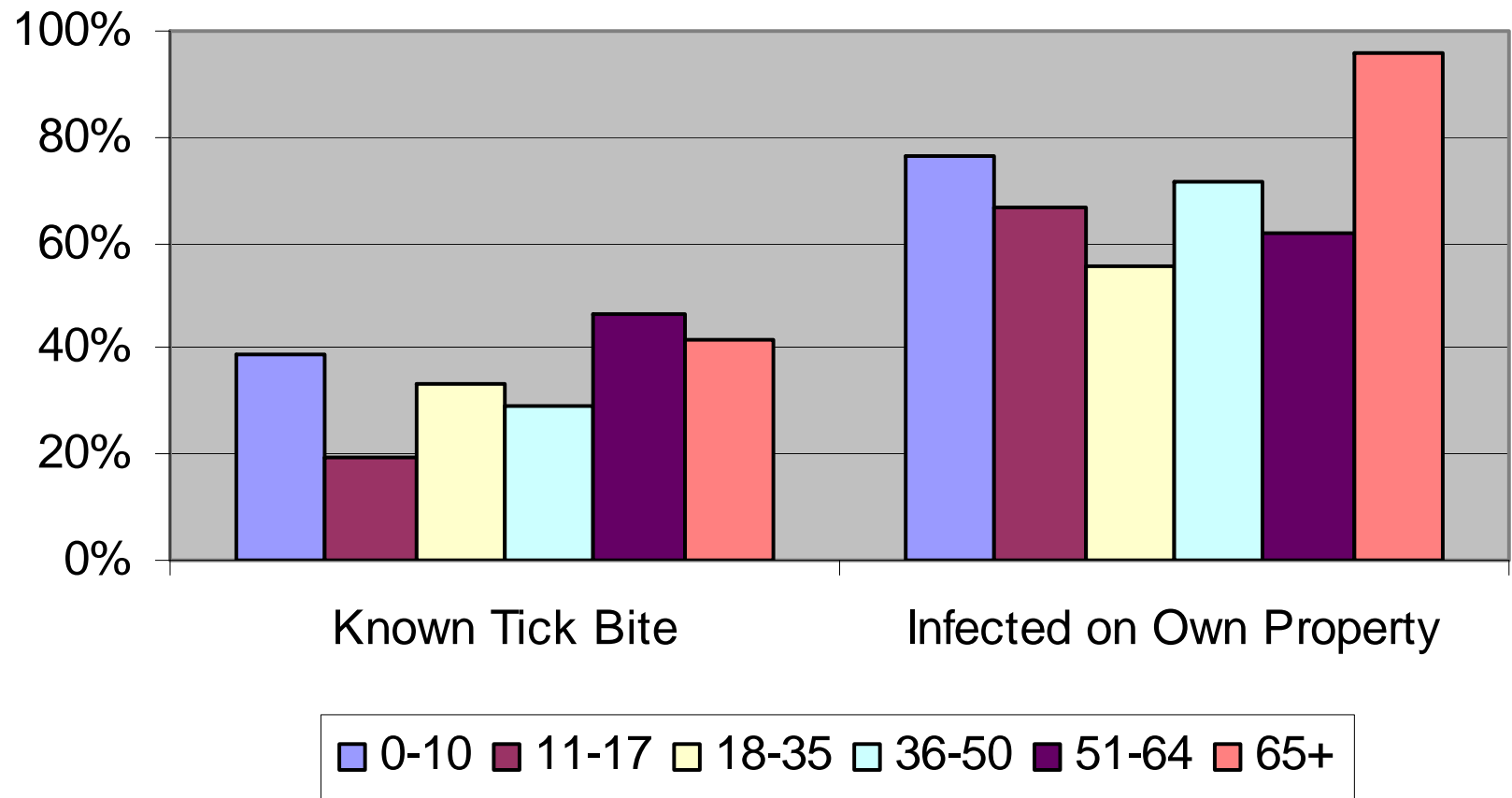
- Survey respondents were more likely to be older than the general population



Suspected Method of Infection



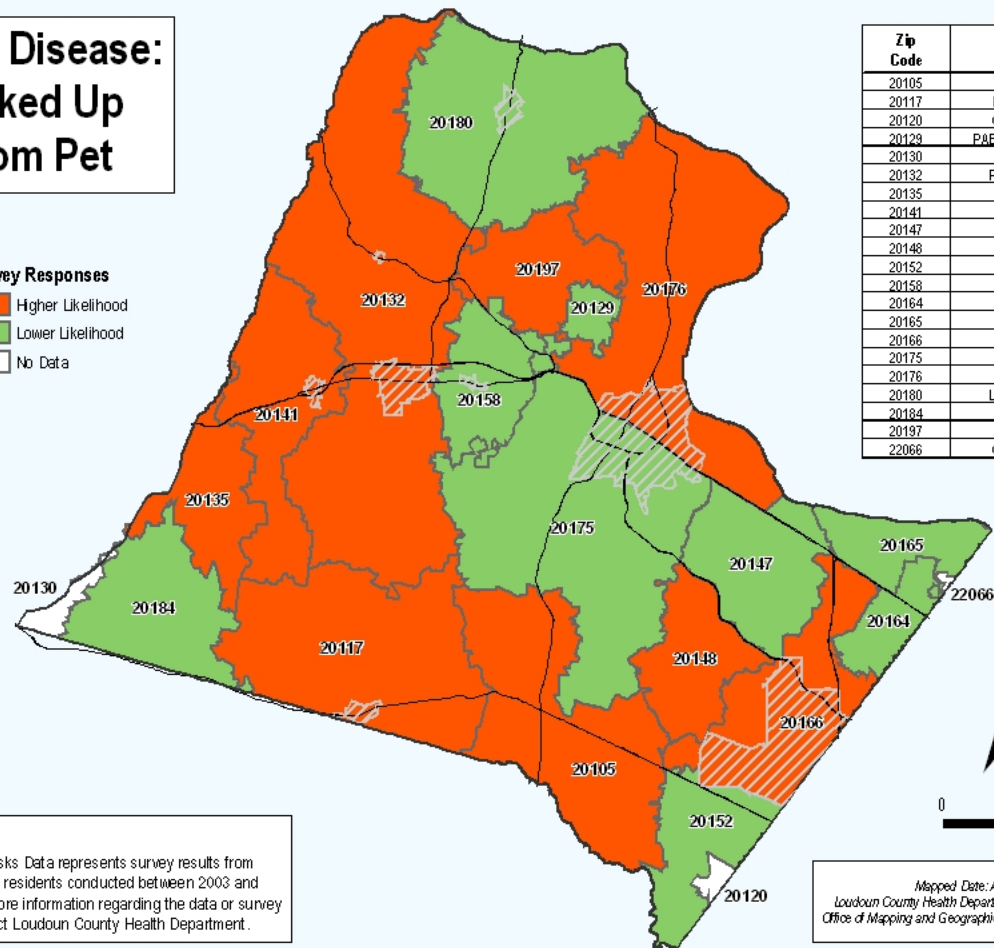
- 71% believe they were infected on their own property, higher in the West



- Those between 11 and 50 were less likely to report a known tick bite
- Those over 65 were more likely to believe they were infected on their own property

Lyme Disease: Picked Up From Pet

Survey Responses



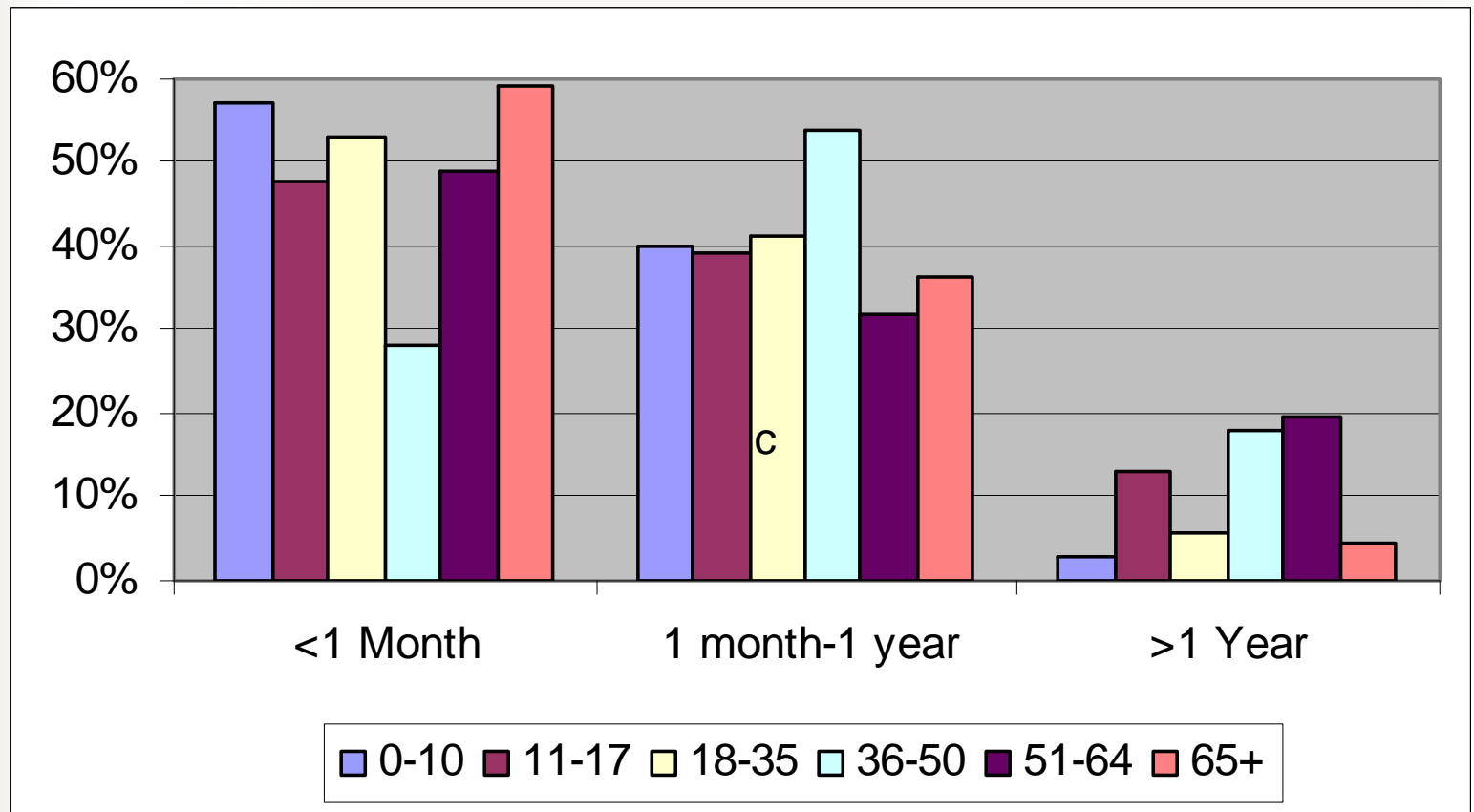
Map Notes:

The Lyme Risks Data represents survey results from 183 Loudoun residents conducted between 2003 and 2006. For more information regarding the data or survey details contact Loudoun County Health Department.

Mapped Date: April 2006
 Loudoun County Health Department and
 Office of Mapping and Geographic Science



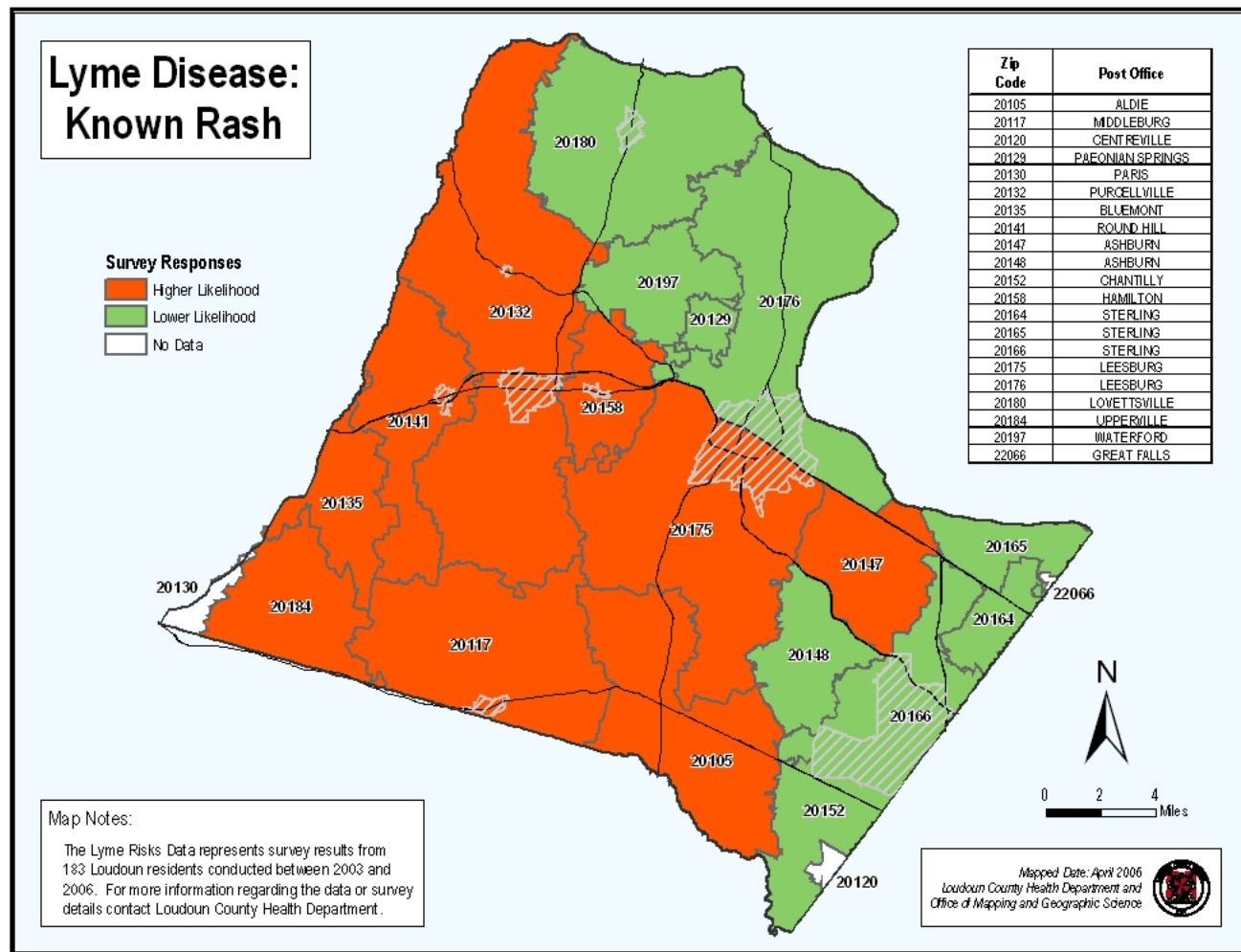
- 24% believed they picked up the tick from their pet, higher in the West



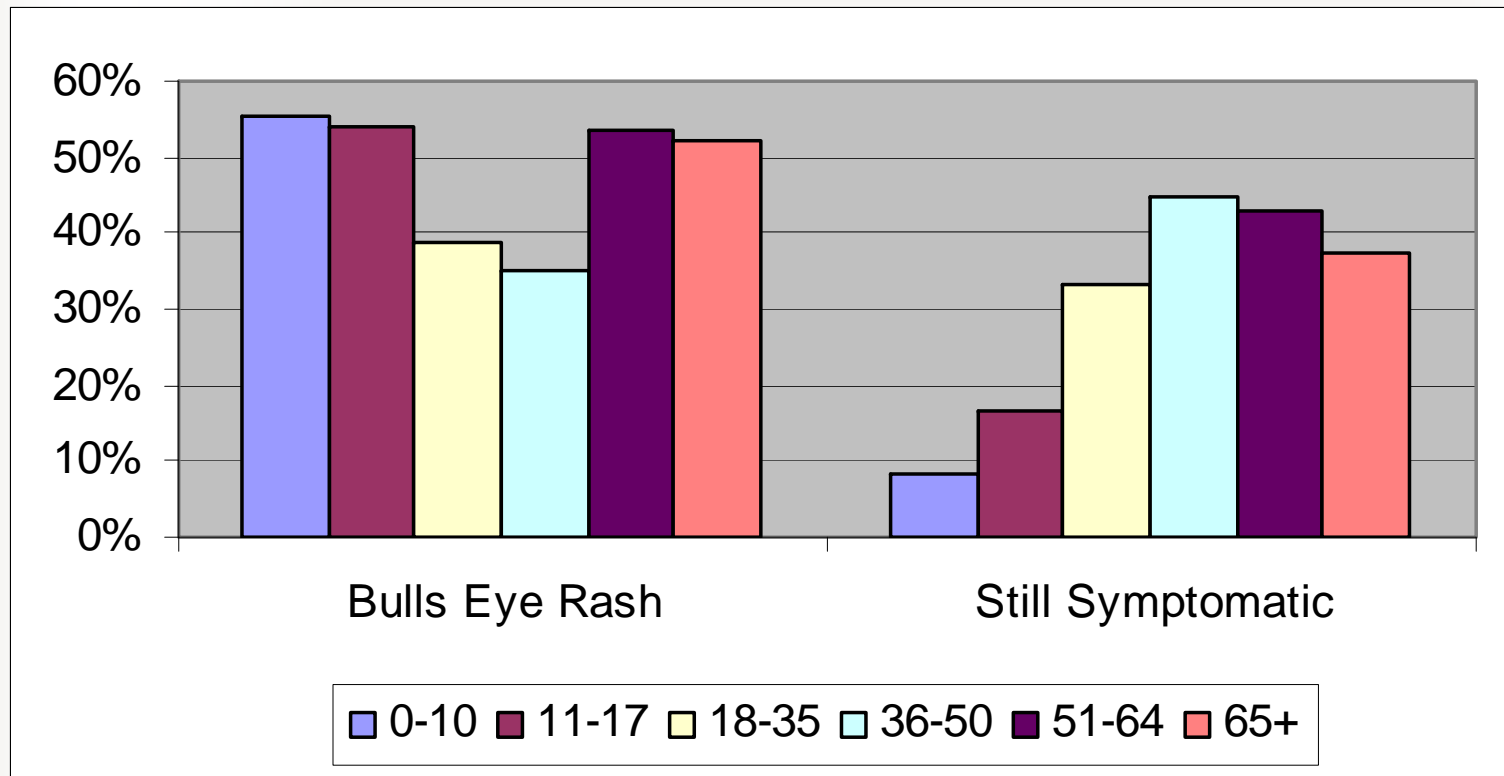
- Those between 36 and 50 were more likely to have a delay in diagnosis



Symptoms



- 48% had a known rash, higher in the West.



- Those between 18 and 50 were less likely to remember a rash
- Those between 36 and 64 were most likely to remain symptomatic after treatment, with no geographic difference