



ASHBURN-LANSDOWNE

Flyer



Happy Holidays, my Ashburn/Lansdowne friends!

My staff and I wish you a joyous and safe holiday as we bid 2020 a hearty farewell. For so many reasons, I think we will all be enormously relieved to see this fateful year in our rearview mirror.

During this holiday season, I had the honor of lighting the final Menorah candle of Chanukah at the request of Rabbi Chaim Cohen of Chabad of Loudoun County. I also volunteered for a few hours at the Ampersand Project handing out free lunches and Christmas presents to families in need. You may have seen some photos and a short video about these events on my [Facebook](#) page.

Finally, we're happy to provide you, in this edition, detailed updates on all of the infrastructure projects ongoing in our district. One of the most frustrating aspects of my job has been learning how much time it takes for badly needed facilities like recreation centers, intersection improvements and road/path/sidewalk improvements to move from approval to completion. A typical road intersection, for example, takes at least three years: one year for study, one year for design and one year for construction. And that's from the year funding is authorized in the budget, usually years out. But we are making great progress on some very important projects as you'll see in this edition of the flyer.

Finally, I want to thank my Chief of Staff, Rachael Mai, my Legislative Aide, Joel Gicker, and my Legislative Intern, Sahana Arumani, who put this edition together. Joel normally produces and publishes the Flyer, a publication of which I am singularly proud, but this edition is so complex and so full of important details, that Rachael, Joel and Sahana collaborated to bring you this periodic, first-rate product. This edition is the result of about ten

iterations, and I think the meticulous detail and clean, succinct format of this newsletter speaks volumes to their hard work. Thank you Rachael, Joel and Sahana!

I wish you all the safest and most joyous of holiday seasons! Relax, eat lots of comfort food, and I'll see you all next year!

Mike Turner
Ashburn District Supervisor

Active Ashburn District Facility Projects

Ashburn Recreation and Community Center



Location: Broadlands Blvd, between Claiborne and Belmont Ridge Road.

Facilities: 115,000 square foot double story complex that includes a competition pool, leisure pool, spa, teaching/catering kitchen, playroom, gymnasium classrooms, meeting rooms, office, and more fitness facilities. There will also be a multi-use trail surrounding the center, a courtyard, and a sitting area.

Update: Design phase is now 95% complete and the plans were submitted for review on November 30, 2020. Advertising for the project can begin after the design phase is completed, which is estimated to occur in Spring/Summer 2021. Additionally, the prequalification process for General Contractors, which validates if they are qualified to construct the project, has been completed. Construction is anticipated to begin by Fall 2021.

[Learn More](#)

Ashburn Senior Center



South Elevation
ASHBURN SENIOR CENTER
CONSTRUCTION

Location: Marblehead Dr, next to Potomac Green Neighborhood Park (This is located in the Broad Run District but will serve residents in Ashburn District as well).

Facilities: To build the first senior center in Ashburn and equip it with many facilities, including a small gym and a large multipurpose room consisting of pickleball courts, classrooms, a commercial kitchen, a game room, computer lab, fitness room, and arts-and-crafts area. The building will be 15,000 square feet, and will be built on a 5-acre proffered site. The exterior areas have been designed as extensions to the classroom areas, allowing activities to flow outside to take advantage of the natural surroundings.

Update: Utility connection work and activation has begun, and factory start up and testing of the mechanical systems is expected to continue for the next few weeks. In the next month, the remaining exterior site work will be completed. The installation of interior finishes, such as paint, tile, flooring, and stone veneer is expected to be ongoing until the completion of the project. Construction is currently estimated to be finished in Spring 2021 and should be open to the public in the fall of 2021.

[Learn More](#)

Intersection & Pedestrian Improvements

Roadway Intersection Improvement Program



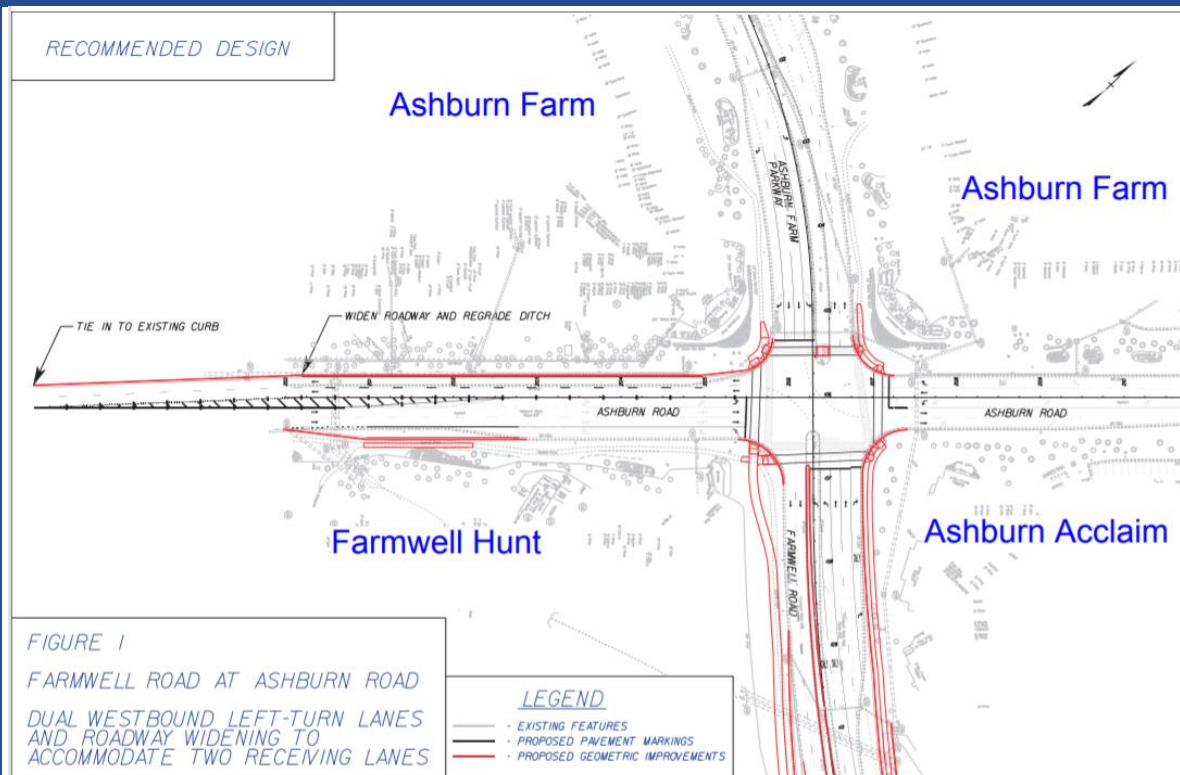
Purpose: To enhance responsiveness in addressing safety and operational problems at intersections, DTCI (Department of Transportation and Capital Infrastructure) proposed a data-driven plan to systematically identify problematic intersections in advance of incidents or complaints. This plan involved conducting an inventory of 892 intersections along roadways listed in the Countywide Transportation Plan ([CTP](#)). The plan evaluated signalized intersection safety using three primary factors and five primary factors for unsignalized and round-a-bout intersections. From this data, the intersections were ranked on a scale from one to five. The lowest level of need (Ranking 1) to the highest level of need (Ranking 5).

Intersections in Ashburn District in the top 20 level 5 rankings:

- Claiborne Pkwy/Marshfield Dr/Crossroads Dr
- Ashburn Road/Faulkner Pkwy
- Claiborne Pkwy/Dulles Greenway WB Ramp
- Ashburn Rd/Waxpool Rd/Ryan Corner Place (already in design phase)

Update: In the next phase of Intersection Improvement Program funds will become available in FY 2022 (July 1, 2021 – June 30, 2022). These funds have been programmed for use to initiate design, land acquisition and construction services of the recommended improvements.

Farmwell Road Intersection Improvements



Location: Along Farmwell Road, between its junction with Ashburn Road and Smith Switch Road.

Purpose: To make improvements along Farmwell Road that make conditions safer for drivers, bikers, and pedestrians.

Update: The plan design (60% complete) were submitted to Business and Development (B&D) and the Virginia Department of Transportation (VDOT) for review in late October of 2020. Utility designations continue due to the amount of fiber that has been installed along the project limits. The VDOT comments were received on November 30, 2020. The geotechnical investigation and test hole fieldwork is complete. ROW acquisition will follow the completion of the design, currently estimated for completion in winter 2021.

[Learn more](#)

Waxpool Corridor study



Location: Waxpool Road between Faulkner Parkway and Demott Drive.

Purpose: The Board of Supervisors approved contracts to design improvements at the intersections of Waxpool Road at Ashburn Road, Waxpool Road at Shellhorn Road, and Corridor-wide pedestrian improvements.

Update: On December 15th, the Board of Supervisors directed county staff to integrate the Waxpool Road Corridor Study into both the Intersection Improvement Program and the Sidewalk and Trails Program. This should help expedite funding for these improvements.

[Learn More.](#)

Improvement Recommendations for the Intersection of Waxpool Road and Ashburn Road/Ryan Corner Place



As a product of the traffic analysis and safety study of Waxpool Road between Faulkner Parkway and Demott Drive, The Board of Supervisors approved recommendations to design improvements at the intersection of Waxpool Road and Ashburn Road/Ryans Corner Place (a Rank 5 intersection). The recommended intersection improvements include interim and long-term improvement design recommendations. The interim improvements are intended to mitigate the crash patterns at this location until more funding can be identified.

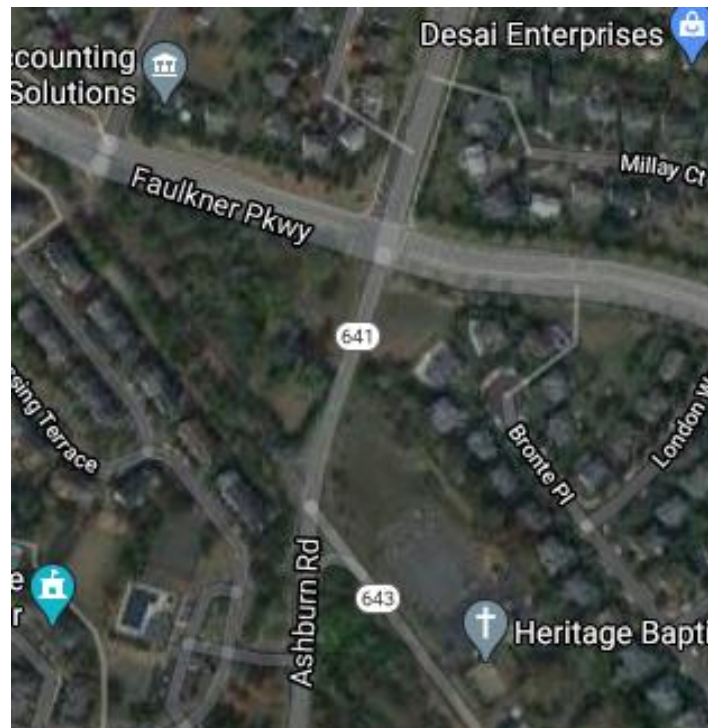
Interim Improvements: Install all way stop signs and use pavement markings to expand the existing left-turn lanes on Waxpool Road to provide one shared left/through lane and one shared through/right lane on each approach on Waxpool Road. This will alleviate the sight distance problems and assign right-of-way for all vehicle movements, which will diminish the crash patterns at this intersection.

Long-Term Improvements: Pending VDOT's approval of the signal justification report, the installation of a traffic signal is recommended.

Update: Completed designs for the interim improvements were approved by the Board of Supervisors and the design process has begun. On December 15th, the Board of Supervisor voted to add no more than \$300,000 for the cost of interim improvements at Waxpool road/Ashburn road/Ryan corner place.

[Learn More.](#)

Improvement Recommendations for the Intersection of Ashburn Road and Faulkner Parkway



Following the Intersection Improvement Program Study, which was completed in 2020, it was recommended installation of a traffic signal at the intersection of Ashburn Road and Faulkner Parkway.

Recommendation: After receiving VDOT's approval staff recommend the installation of a traffic signal with dedicated right and left turn lanes in the eastbound and westbound directions, which may require additional ROW in all four quadrants of the intersection. The profile, curb and gutter of Ashburn Road should be upgraded and the road should be leveled to remove an elevated hump where cars can potentially go airborne as they cross the intersection. Additionally, the existing pedestrian ramps need to be upgraded to be ADA compliant.

Update: The Board of Supervisors voted 9-0 to add this intersection for deliberations and programming this year in preparations to approve it for Fiscal Year 2022. Fiscal Year 2022 begins on July 1, 2021 and ends June 30, 2022.

[Learn More.](#)

Sidewalks, Parks and Trails Update

Waxpool Corridor Pedestrian Improvements



Location: Waxpool Road between Faulkner Parkway and Demott Drive.

Purpose: To complete portions of missing sidewalks along Waxpool Road between Faulkner Parkway and Demott Drive. The missing links where sidewalk is proposed with the corridor-wide pedestrian improvements are shown in blue above. This includes approximately 2,800 linear feet (LF) of sidewalk between Faulkner Parkway and Omeara Terrace on the north side of Waxpool Road, and approximately 1,700 LF of sidewalk between Trask Place and Claiborne Parkway on the south side of Waxpool Road totaling 4,500 LF (0.85 miles). These improvements would provide continuous pedestrian connections along the north and south side of Waxpool Road for the entirety of the corridor study area.

Update: On December 15th, the Board of Supervisors directed county staff to integrate the Waxpool Road Corridor Study into both the Intersection Improvement Program and the Sidewalk and Trails Program. This includes the pedestrian improvements along the Waxpool corridor.

[Learn More.](#)

Metro Station Area Pedestrian Improvements



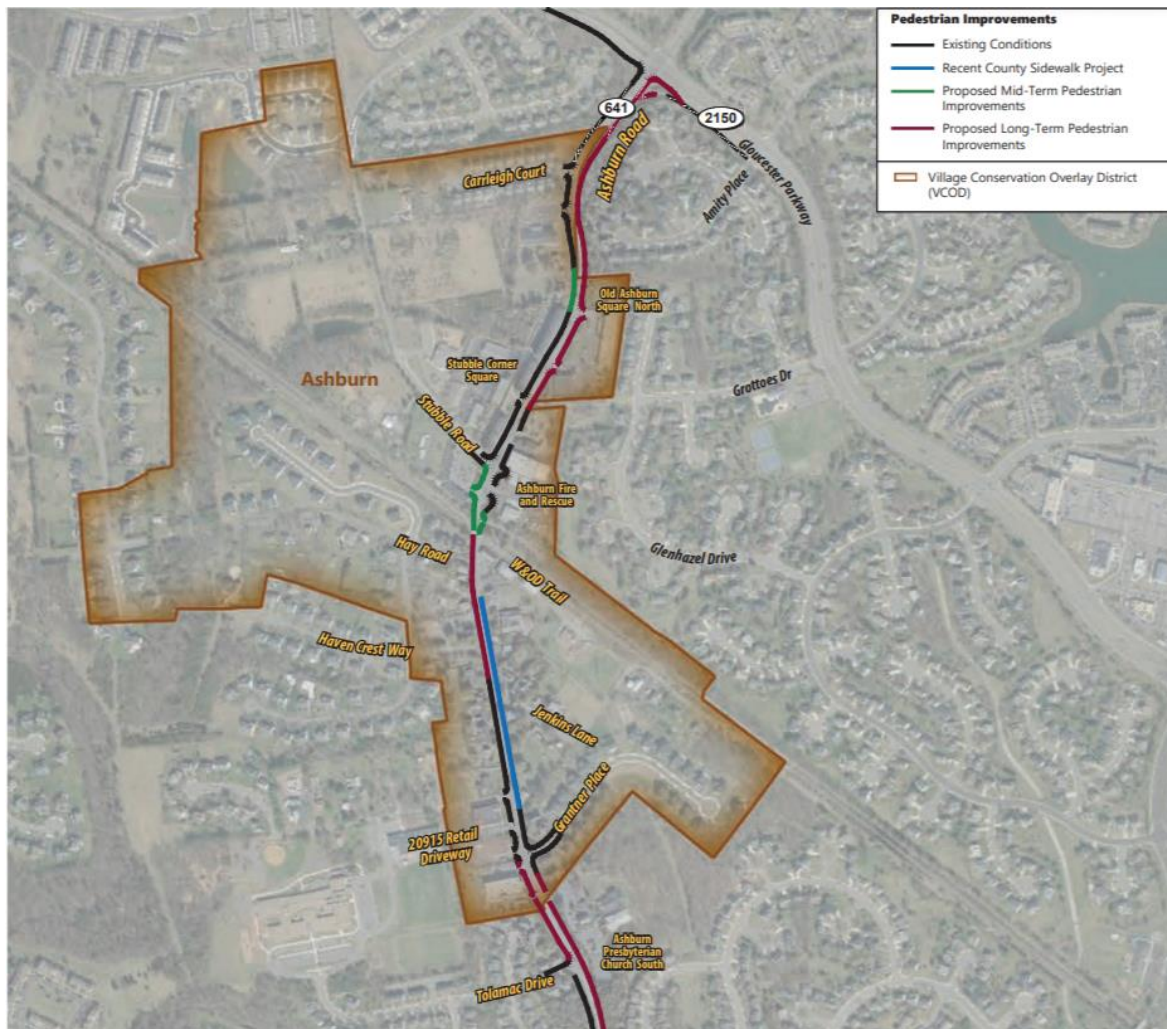
Location: Between the W&OD Trail and the Ashburn and Loudoun Gateway metro rail stations.

Purpose: To provide missing links in the bicycle and pedestrian transportation network from the W&OD Trail to the new Loudoun Gateway and Ashburn Metrorail Stations.

Update: A virtual public information meeting was held on October 22, 2020 and the hearing level plans are now under review and are expected to be complete in the fall of 2020. The presentation can be watched [here](#) and a PDF of the presentation can be found [here](#). Coordination for another virtual public hearing is underway. Missing links along Route 606 will be finished in late 2022. Wynridge Dr, Ashburn Village (N), Waxpool Rd, and Smith Switch Road will be completed in late 2023. Shellhorn Rd, Ashburn Village (S), Prentice Dr, Pacific Blvd, and Loudoun County Pkwy will be completed in late 2026.

[Learn More.](#)

Traffic Study of Ashburn Road from Gloucester Parkway to Ashburn Farm Parkway/Farmwell Road



In January 2019, The Board directed staff to assess the cost and identify funding for a traffic study along Ashburn Road (Route 641) between Gloucester Parkway to Ashburn Farm Parkway/Farmwell Road. In October 2020, staff presented the findings of that study and made the following recommendations:

Short-Term Recommendations

- Install two Gateway signs on Ashburn Road and (proposed) one sign along Hay Road.
- Install on-street shared lanes (sharrows) for bicyclists along Ashburn road between stubble road and haven crest way.
- Install two Pole Mounted Speed Display Signs (PMSDs) along Ashburn Road.

- Install “Additional \$200 Fine” signs throughout the posted 25 mph speed limit section of Ashburn Road.
- Install stamped asphalt, a decorative pattern, that is imprinted or painted onto asphalt pavement, such as a brick pattern.
- Tree trimming is proposed at select locations along the corridor where sight distance is limited due to dense, overgrown foliage.

Mid-term recommendations

Recommended mid-term improvements will address the missing link segments along the subject corridor where impact to utilities and public right-of-way are minimal. These improvements include installation of segments of sidewalks, curb and gutter and storm drainage system on both sides of Ashburn Road north of the W&OD Trail.

Long-Term Recommendation

Recommended long-term improvements will address the missing link segments along the subject corridor where impacts to utilities and public right-of-way are substantial. These improvements include installation of sidewalks and a shared-use trail, including curb and gutter and storm drainage system, which will comply with the ultimate condition as described in the CTP. A shared-use trail is proposed on the eastern side of Ashburn Road between Stubble Corner Square and Gloucester Parkway. Sidewalks are proposed on both sides of Ashburn Road from Grantner Place to the Beaverdam Run Bridge, and from Parkhurst Place/Thatcher Terrace to Ashburn Farm Parkway/Farmwell Road.

Update: The Board of Supervisors directed county staff to amend the FY 2021 CIP to use \$43,000 for engineering design services on the short-term improvements. The Board of Supervisors voted on this at the December 15th business meeting to fund the construction costs of the short-term improvements. The full scope of the mid-term and long-term improvements were deferred to the next appropriate capital budget deliberation process for further consideration and prioritization.

[Learn more](#)

Sidewalk study: Ashburn Road from the W&OD Trail to Gloucester Pkwy



As part of an ongoing process to achieve safe and efficient multi-modal transportation system countywide, the 2019 CTP policies require that bicycle and pedestrian facilities be integrated as part of the planning, design and implementation process of all roadway projects.

In January 2019, the Department of Transportation and Capital Infrastructure (DTCI) initiated a countywide study to identify and prioritize the missing sidewalks and shared use paths in an effort to accelerate the delivery of projects, and propose a proactive approach to ensure adequate resources and programmatic methodology to efficiently implement projects.

The 12 highest ranked missing segments were identified and used to develop the recommended sidewalk/shared use path projects. This study identified the segment of Ashburn Road, between the W&OD Trail and Gloucester Pkwy as priority number 7. The recommendation to be considered is to build a shared use path along a 0.54 mile stretch of Ashburn Rd between the W&OD Trail and Gloucester Pkwy.

Update: The study recommended that this section should progress to the design and construction phase. The Board of Supervisors voted 9-0 to forward the 12 projects to the Fiscal Year 2022 Capital Improvement Program budget deliberation for programing.

[Learn more](#)

Ashburn Park



Ashburn Park: Is a 16-acre park that features a creek, natural trails, a rentable pavilion, a picnic area, a playground, a restroom and a wooded area.

Recommendation: The [Capital Asset Preservation Program \(CAPP\)](#) designated that the rentable pavilion needs repair.

Update: The pavilion is in the design phase.

[Learn more](#)

Trailside Park



Trailside Park: Is a 20-acre park is home to Madison Small Softball Complex and is adjacent to the W&OD Trail.

Recommendation: The [Capital Asset Preservation Program \(CAPP\)](#) designates that a park bridge will be repaired and two park bridges will be replaced, with help from the Department of General Services. These improvements will include a channel restoration, a floodplain study, and inclusion of a retaining wall and guardrails.

Update: It is in the Design Phase of the study.

[Learn more](#)

Potomac Green Community Park



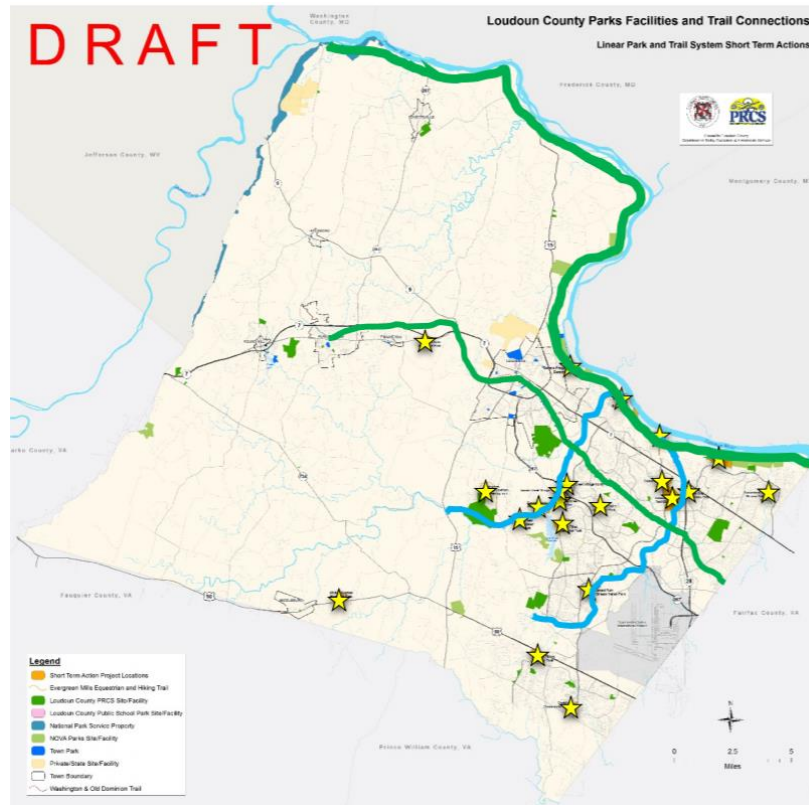
The Potomac Green Community Park: Includes construction of a 28-acre park in Ashburn, VA. This park was dedicated to the County by the developer and will contain three multi-purpose athletic fields for soccer, football and lacrosse, and one baseball field. The park will also include an ADA accessible restroom facility, concession stand, sidewalks and trails, pavilions, bleachers, playground, off-leash area, tennis/pickle ball court, and a bocce ball court.

Update: Installation of sediment and erosion control were completed, along with the process of site demolition. Rough grading, or the process of shaping the construction site, has begun along with the installation of storm, sewer, and domestic water lines. At the end of November 2020, it is expected that

underground electric, fencing and preparation will commence before the construction of the tennis/pickle ball courts.

[Learn more.](#)

Countywide Linear Parks and Trails System



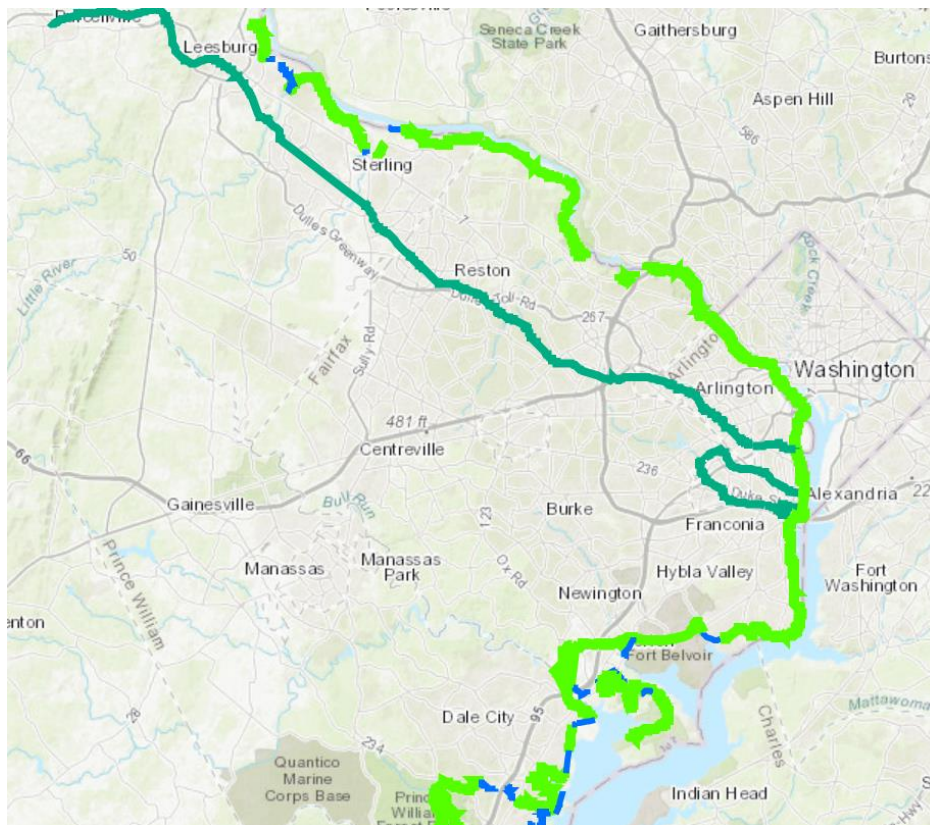
Purpose: is to connect and protect the natural, recreational, and cultural resources of Loudoun County. Most segments border linear features, such as streams, ridges, or abandoned roadways. The segments could be wildlife habitats or scenic resources, and be for private or public use. Public use trails accommodate horse-back riding, hiking and biking, and connect to the paved pedestrian and bicycle transportation network. The trails may also connect to natural and community resources, enabling people to travel to schools, community centers, and parks without motorized vehicles.

Update: After Supervisor Turner introduced an initiate to move the Linear Parks and Trails Study from Fiscal Year (FY) 2022 to FY 2020, a request for proposal was issued. The project, awarded to Design Workshop in Raleigh, North Carolina, was initiated November 2020. The timeline for completion is six to eight months, with completion by May 2021. Full execution of the plan

will take several years. Over the next several months, citizens will have opportunities to participate, including virtual meetings and surveys. Residents are encouraged to complete an online survey, submit comments and find more information about the Linear Parks and Trails system project at loudoun.gov/linearparksandtrails. Inquiries and comments can also be sent by email to lpot@loudoun.gov.

[Learn more](#)

Potomac Heritage National Scenic Trail Project



Purpose: The Potomac Heritage National Scenic Trail Project (PHNST) is a National Recreation Trail that was established as part of the National Trail System Act of 1968 with the goal of connecting 830 miles of locally maintained trails and routes on both sides of the Potomac. Once complete, the PHNST will connect the Northern Neck peninsula in Virginia to Pittsburg, Pennsylvania.

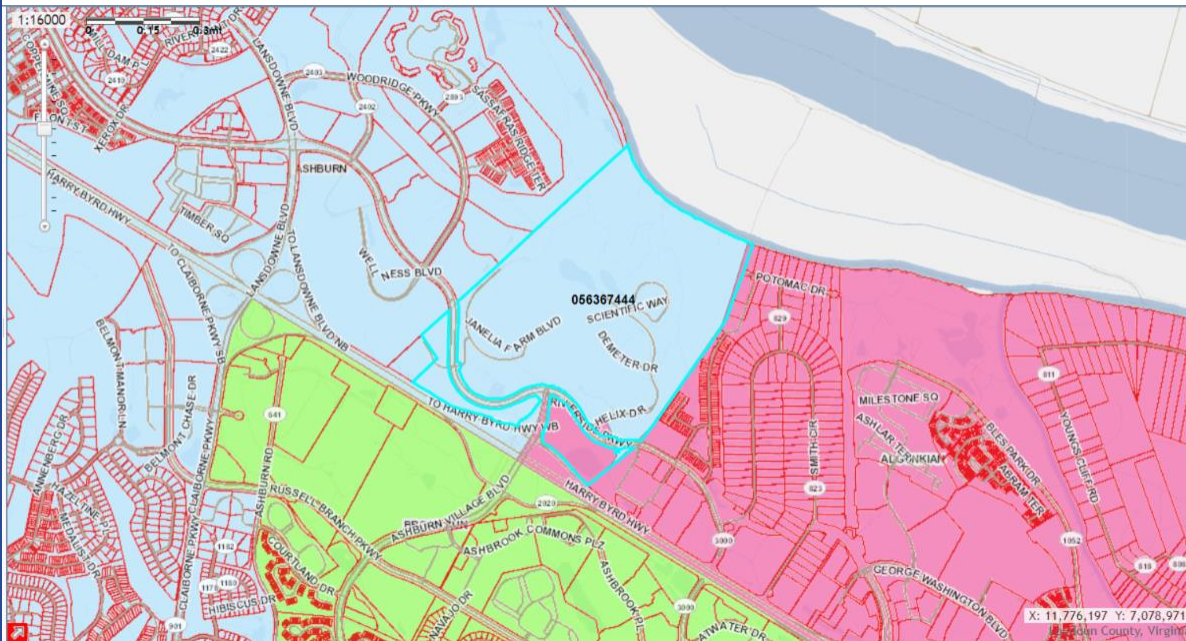
PHNST in Loudoun County: Fifteen miles of the trail are designated as a linear park in Loudoun County. The linear park extends from Seneca Rocks on

the Fairfax County border to Keep Loudoun Beautiful Park on the Goose Creek. In Loudoun, the trail includes portions of Elizabeth Mills Riverfront Park, Kephart Bridge Landing Park, and Bles Park.

[Learn more](#)

Approved Land Applications

Janelia Research Campus Apartments



Location: 19700 Helix Dr.

Purpose: The approved plan proposes an apartment building with 101 multi-family residential units at the Janelia Research Campus.

Harvard Junior Preschool



Location: 43676 Waxpool Rd.

Purpose: The approved plan proposes building a three story childcare center, with a total floor area of 10,833 square feet for up to 70 students. This includes 29 onsite parking spaces, a fenced in play area and a right of way dedication along the property frontage on Shellhorn Road and Waxpool road.

National Conference Center East



Location: 18920 Upper Belmont Place.

Purpose: The approved proposal calls for building 74 single family attached dwelling units. These are age restricted homes and at least one resident must be 55 years or older and no one under 18 years old may live here.

Ashburn Chase & Regency at Belmont Chase Townhomes Proposal



Location: Bordering Claiborne Pkwy, Russell Branch Pkwy and Ashburn Road.

Purpose: 1) To construct two multi-family buildings each with 48 dwelling units. 2) To construct a townhome community with 105 single-family attached age restricted dwelling units (Active Adult Units) and the necessary roads and utilities. 3) A commercial center is also being considered, but an application has not been submitted yet.

Completed Ashburn Projects

Belmont Ridge Road at the Dulles Greenway in Loudoun County



New four-lane configuration of Belmont Ridge Road facing new traffic signal at Dulles Greenway interchange

Location: At the Dulles Greenway interchange on Belmont Ridge Road.

Purpose: To widen the original 2-lane road to a 4-lane road (2 lanes in each direction) and widen the bridge to 4 lanes within the allowance of the original deck. Additionally, the project includes implementation of a flashing yellow arrow to direct left turn traffic from Belmont Ridge Rd to Dulles Greenway, signage on the on- and off-ramps, and improvements to the ramp going from Belmont Ridge Rd to eastbound Dulles Greenway. There will also be 2-foot shoulder for drivers at the interchange and on the bridge. All of this will help with controlling congestion and improving the safety of drivers.

Update: This project was completed in September 2020.

[Learn More](#)

Paving and Slurry Projects



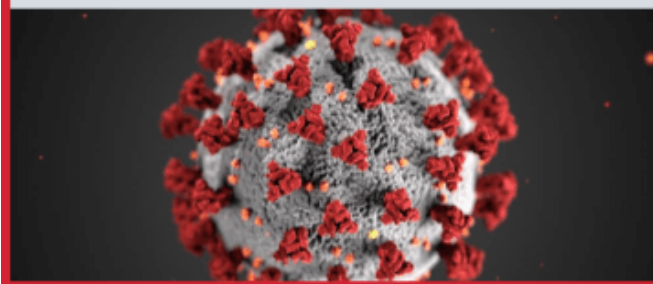
Purpose: To repave or apply a slurry seal to existing roadways where needed. (Slurry seal is a mix of asphalt emulsion and aggregate that is spread over the entire roadway surface. It is applied by a truck equipped with a squeegee or spreader box).

Update: All 2020 paving and slurry projects are complete.

Progress: Progress can be tracked [here](#).

COVID-19 Resources

Coronavirus (COVID-19) Preparedness



Stay informed about COVID19:

- [Maps & GIS Resources Relevant to the COVID-19 Pandemic](#)
- [Virtual COVID19 Symptom Checker](#)
- [Steps to Slow the Spread of COVID-19](#)
- [Recent Executive Orders from Virginia Governor Ralph Northam](#)
- [View all Covid19 updates from Loudoun County](#)
- [Information about COVID-19 and LCPS operations](#)
- [Sign up for updates in Notify Me, Blogs category](#)
- [CDC Guidance on COVID19](#)
- [How to help community organizations responding to COVID-19](#)

Was this Newsletter forwarded to you?

If this email was forwarded to you and you would like to receive news and updates from Ashburn Supervisor Mike Turner, [Sign Up for the Ashburn-Lansdowne Flyer here!](#)

Contact my Office

Because your voice plays such a vital role in the decision-making process, a critical role for me as your county representative is to provide you with the necessary facts to keep you informed about any and all issues affecting you or your family's quality of life. Please don't hesitate to contact me directly or my staff.

Mike Turner

-

Supervisor

Mike.Turner@Loudoun.gov

703-777-0205

Rachael Mai

-

Chief of Staff

Rachael.Mai@Loudoun.gov

703-737-8180

Joel Gicker

-

Legislative Aide

Joel.Gicker@Loudoun.gov

703-737-8509



Like Supervisor Mike Turner on Facebook!
[@MikeTurnerAshburn](#)

Supervisor Mike Turner | 1 Harrison Street, S.E., 5th Floor, P.O. Box 7000, Leesburg, VA 20177-7000

[About our service provider](#)

Sent by mike.turner@loudoun.gov powered by



