

Loudoun County Sheriff's Office



Quarterly Meeting

Wednesday, October 12, 2022



Calls For Service Statistics/Traffic Enforcement

Quarterly Calls For Service

July - September 2022

EASTERN LOUDOUN	10,978
------------------------	---------------

COUNTYWIDE	35,126
-------------------	---------------

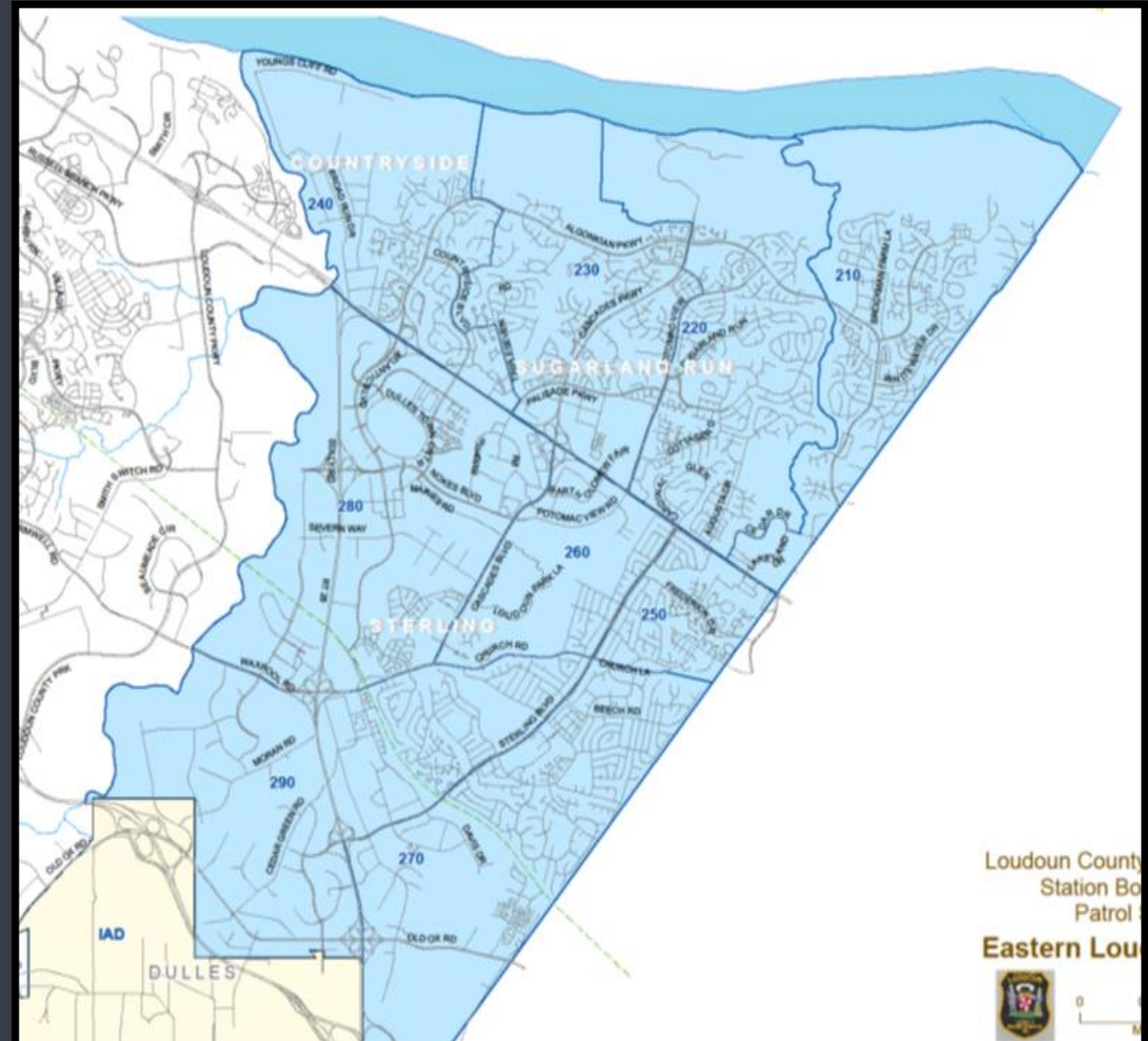
% of Calls Countywide	31%
------------------------------	------------

Origination of Calls for Service

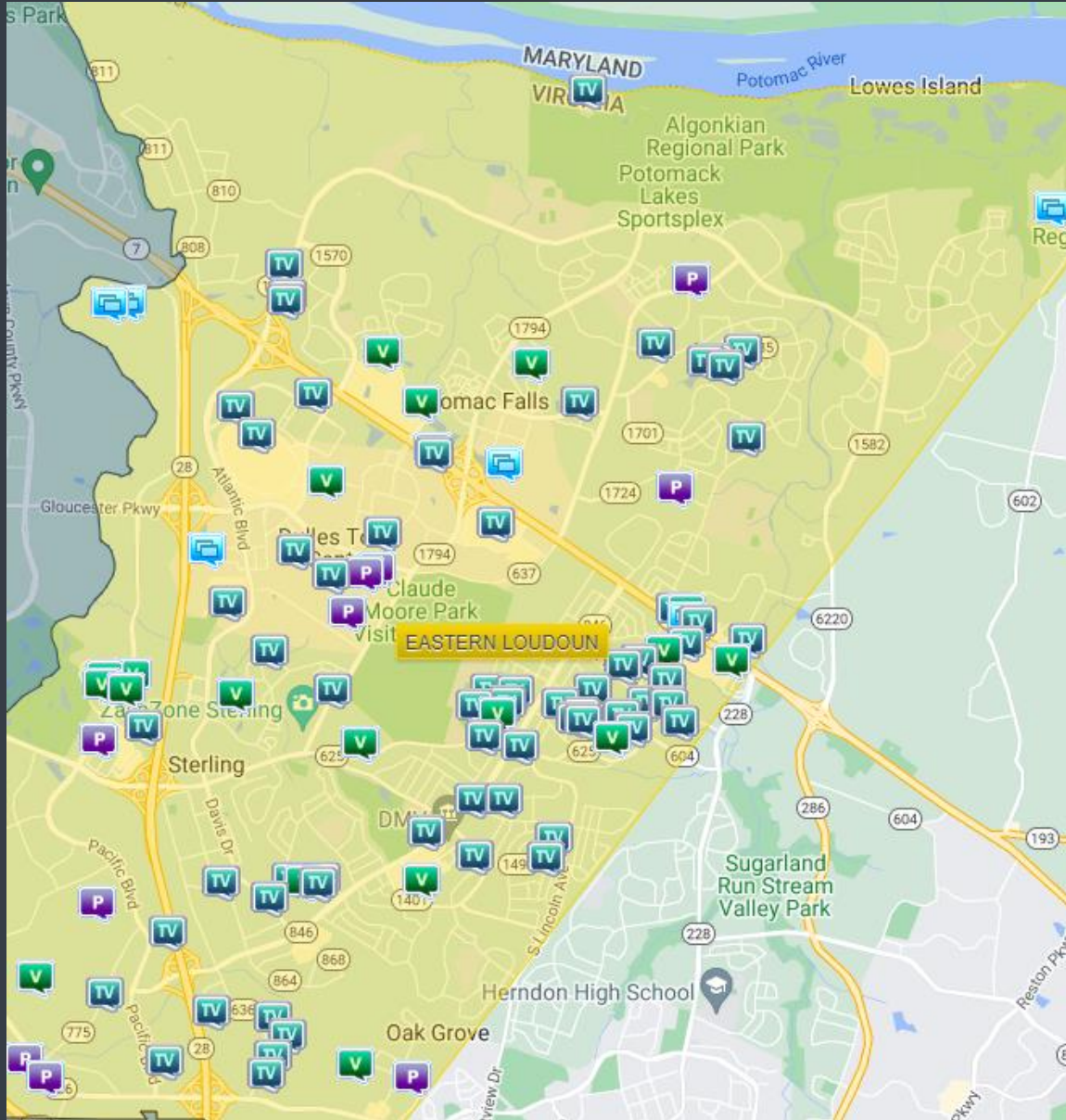
July - September 2022

CITIZENS	6323
-----------------	-------------

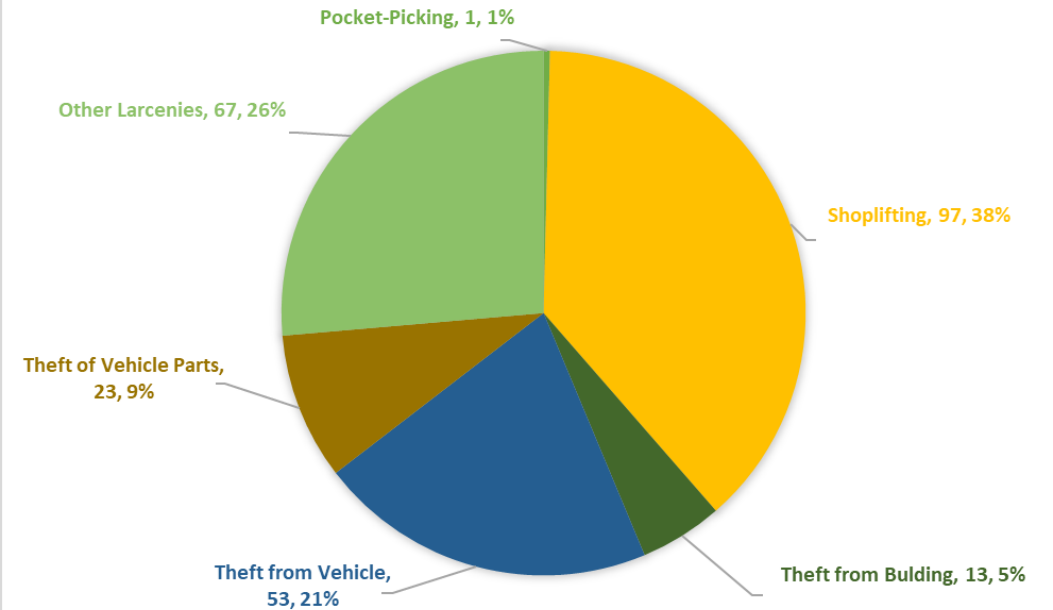
DEPUTY	4655
---------------	-------------



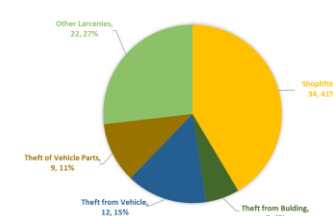
Larceny



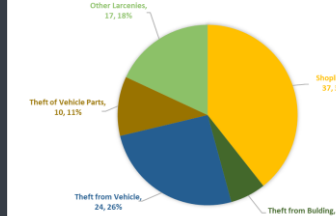
Q3 (JULY-SEPTEMBER) 2022 LARCENY CASES BY UCR TYPE



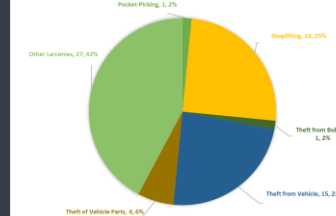
JULY 2022 LARCENY CASES BY UCR TYPE



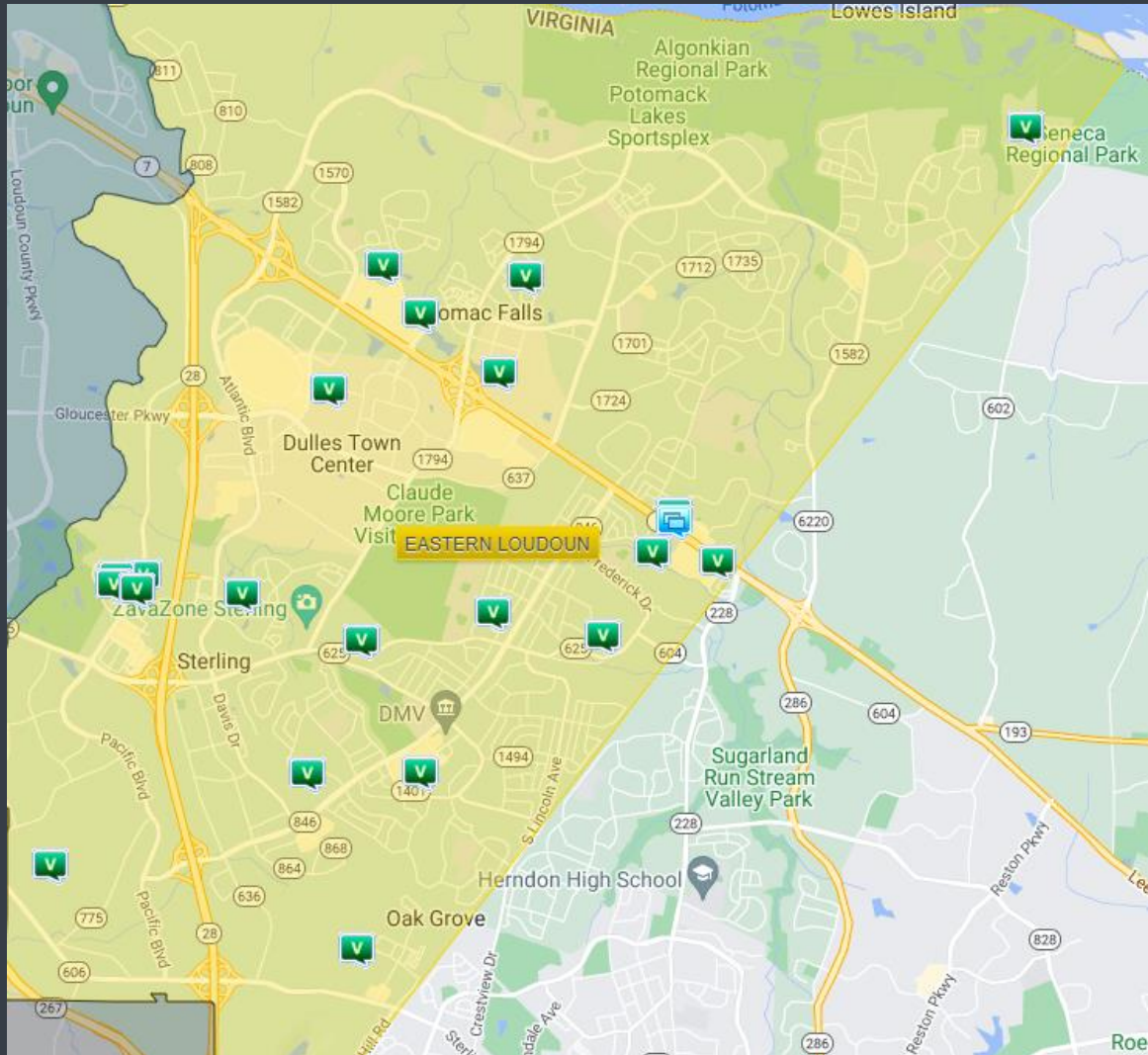
AUGUST 2022 LARCENY CASES BY UCR TYPE



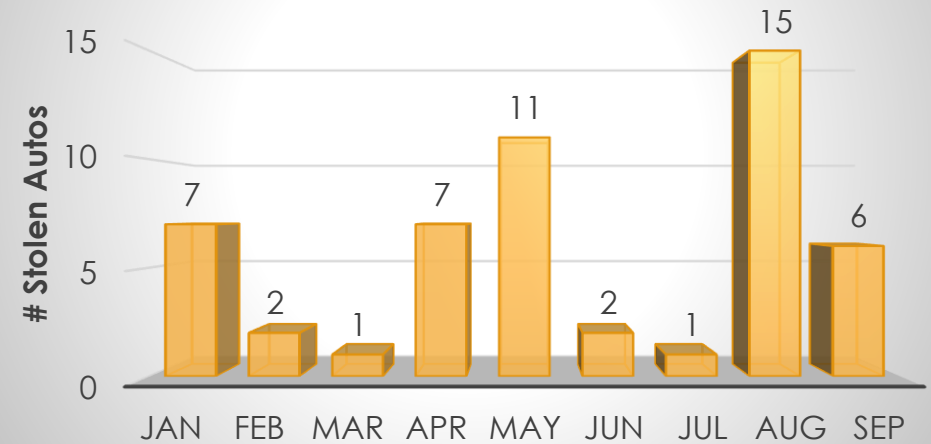
SEPTEMBER 2022 LARCENY CASES BY UCR TYPE



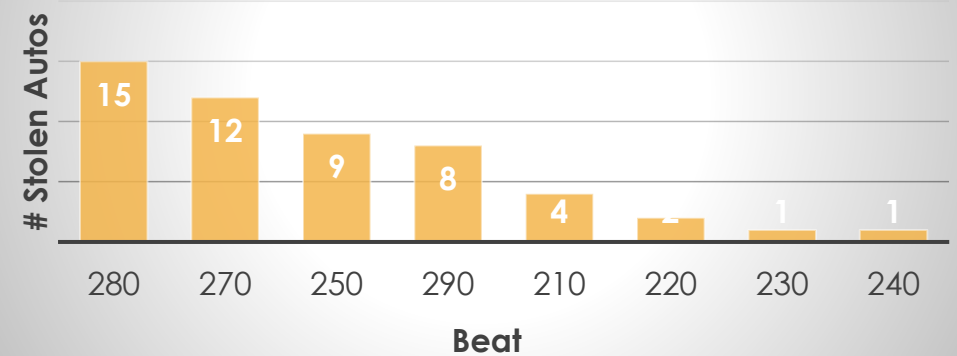
Larceny – Stolen Auto



Total Stolen Autos by Month 2022

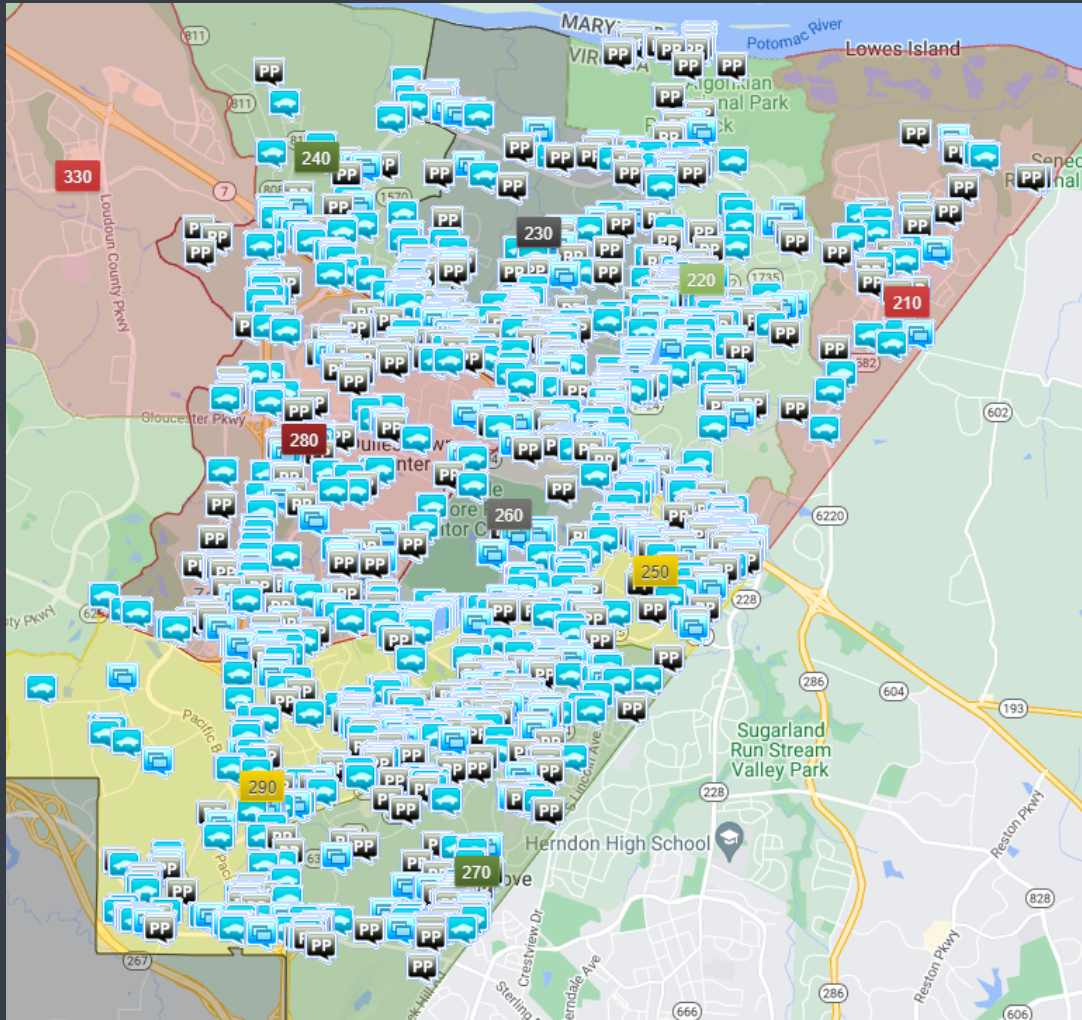


Total Stolen Autos by Beat 2022 (n=52)

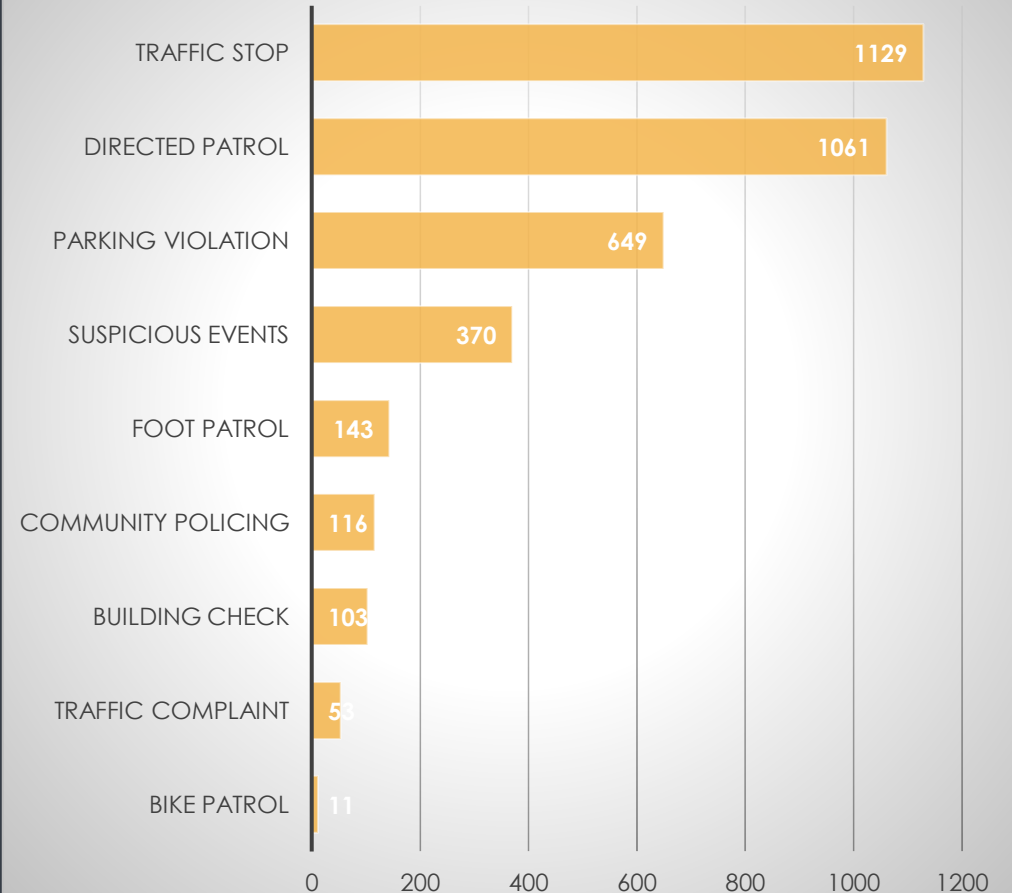


Proactive Patrol Activities

July 1-Sep 30

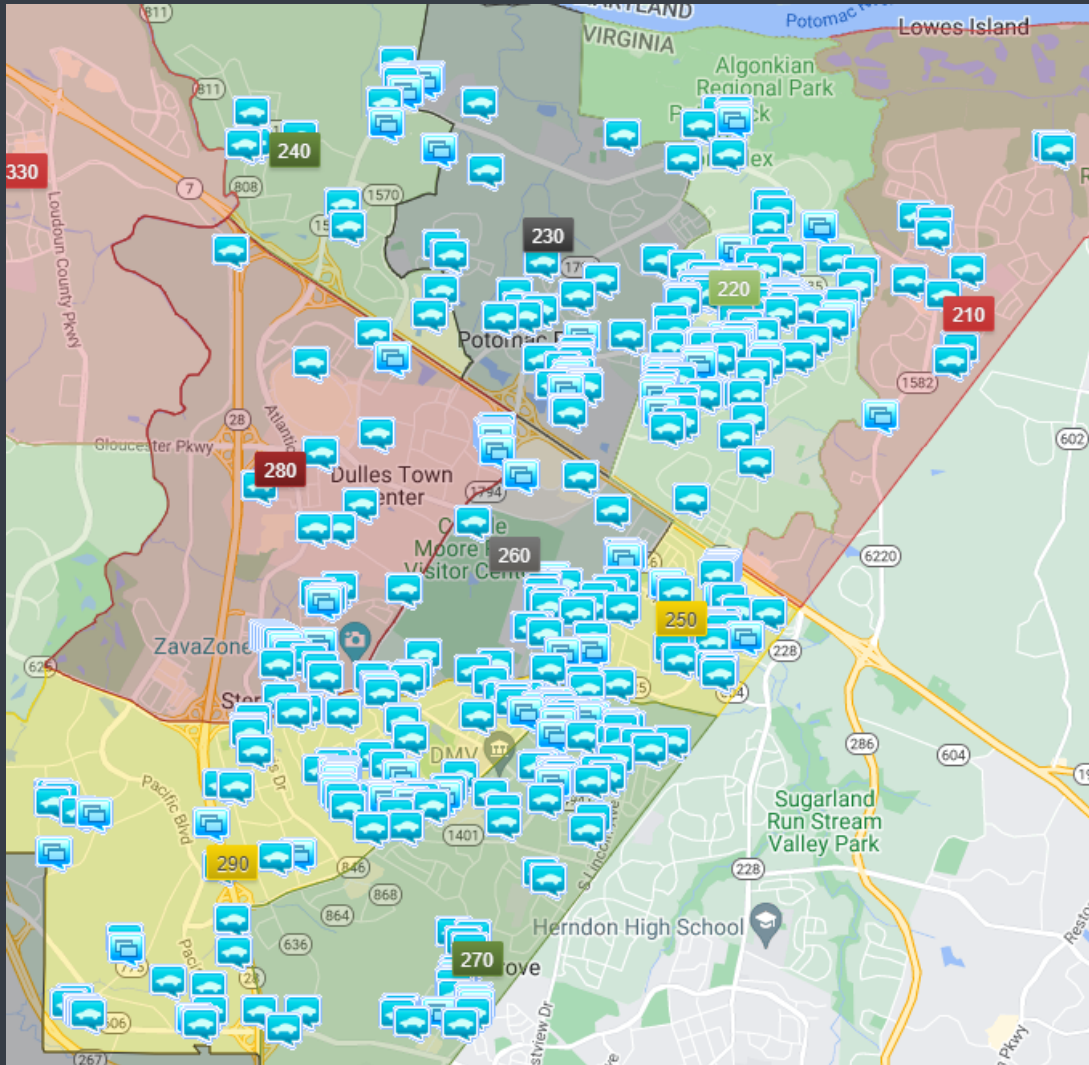


Number of Incidents



Traffic Enforcement Activities

July 1 – Sep 30



Parking Enforcement Map

Quarterly TRAFFIC / PARKING ENFORCEMENT ACTIONS

CITATIONS	1359
PARKING	576
COMPLAINTS	306
TRAFFIC HOTLINE	72
TOTAL	2313



Speeding and parking violations are the top two traffic issues

Traffic Deputy



Unit Mission

- Receive, respond, and monitor community traffic complaints
- Conduct traffic and parking enforcement
- Conduct traffic analysis & informal speed studies
- Coordinate response with partner organizations (VDOT, VSP)
- Develop solutions for long term problems



Traffic Complaint Form
QR code



DFC. Richard Dau
Traffic Deputy

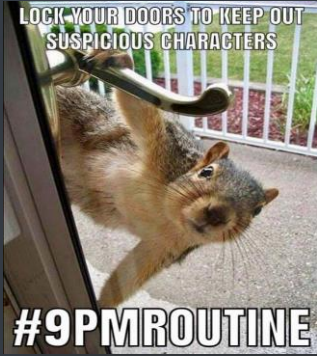
Richard.Dau@loudoun.gov

New Position added in FY23

REMINDER

The Loudoun County Sheriff's Office

#9PMRoutine



- LOCK PERSONAL VEHICLES
- SECURE VALUABLES IN VEHICLE TRUNK
- CLOSE/LOCK RESIDENTIAL GARAGES AND DOORS
- SAFELY SECURE ALL FIREARMS * NOT IN VEHICLES
- AND.....PLEASE SHARE THE #9PMROUTINE INFORMATION WITH YOUR COMMUNITY TO HELP PREVENT PROPERTY CRIMES IN YOUR NEIGHBORHOOD!



NON-EMERGENCY (703) 777-1021
TRAFFIC HOTLINE (703) 771-5798
NARCOTICS TIP LINE (703) 779-0552
CRIME SOLVERS (703) 777-1919



my.VDOT.Virginia.gov

Northern Virginia District Office
14685 Avion Parkway
Chantilly, Virginia 20151
703-383-2000
www.VirginiaDOT.org

Work Requests

Just submit a **work request** or
call 800-367-ROAD (7623)

The screenshot shows the myVDOT website interface. At the top, there's a navigation bar with "Virginia.gov", "Agencies", "Customer", and a search bar. Below this is the myVDOT logo and a "Sign In or Register" button. The main content area is divided into two columns. The left column has a "How can we help you?" section with radio button options: "I need a road repaired", "I need something removed from a road", "I need signs, signals, or guardrail repaired", "I need new signs or traffic devices installed", "I have a question or need information", and "I want to submit a claim (includes mailbox damage)". Below these options is a note about road maintenance and a "Continue" button. The right column has a "Check service request status" section with a text input field for a service request number and a "Check your status" button. Below this is a "Traffic Information" section with a "511" logo and a "Popular Links" section with various links like "Business Center", "High Occupancy Vehicle (HOV) Systems", etc.

The screenshot shows the VDOT work request form. At the top, there's a header with "Questions? Comments?" and a "Use this form!" section. Below this is a "Name:" field, an "E-mail address:" field, a "Confirm e-mail address:" field, an "Email subject:" field, and a "City or county:" dropdown menu. There's also a "Comments:" text area. Below the form fields is a "Submit" button and a "Cancel" button. On the left side of the form, there's a "Traffic Information" section with a "511" logo and a "SMART SCALE Dashboard" section. At the bottom, there's a "Connect With Us!" section with social media links.