



# **Route 606 Loudoun County Parkway / Old Ox Road Reconstruction and Widening Project**

**Lunsford Middle School**

October 17, 2016

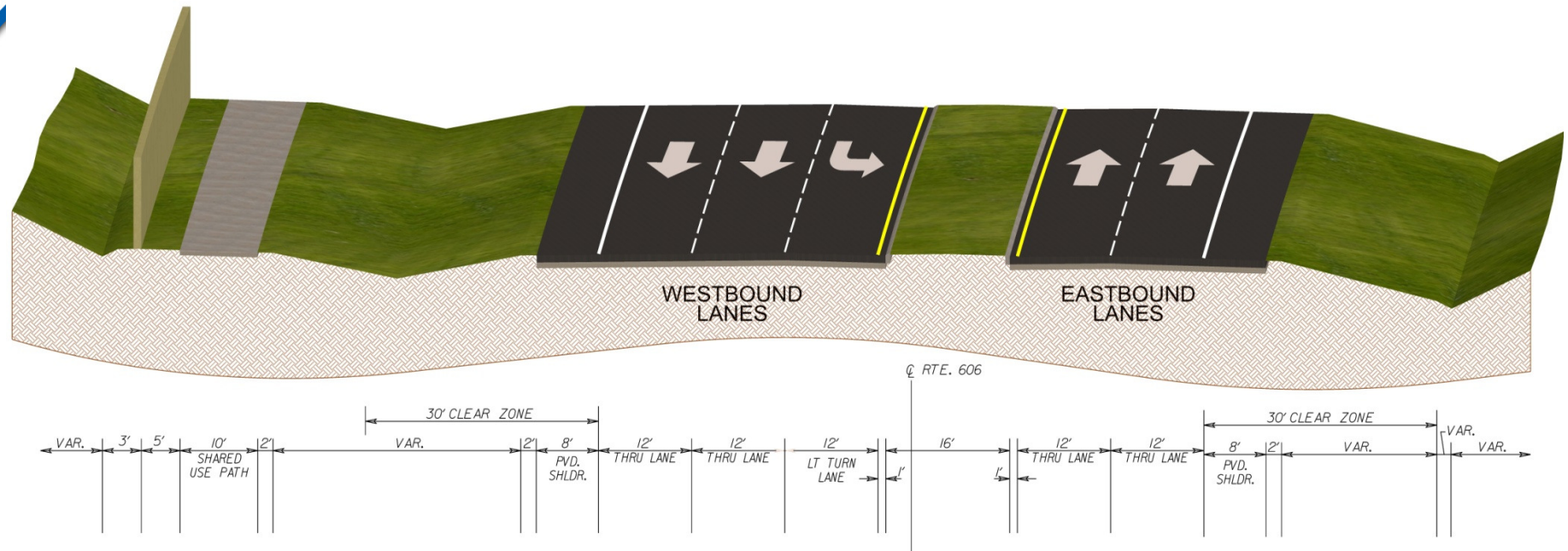
# Objectives

- Provide an Overview of the Project
- Discuss the Project Schedule
- Describe Construction Sequence
- Answer Your Questions



# Major Design Features

## Typical Section



- **Four lane divided roadway**
- **Raised 28' Wide Grass Median**
- **8' wide full Depth Shoulders**
- **10' Wide Shared Use Path on West Side**

# Major Design Features

## Modification to Horsepen Dam and Spillway



**Existing Condition**



# Major Design Features

## Modification to Horsepen Dam and Spillway



**Proposed Widening**

# Project Metrics

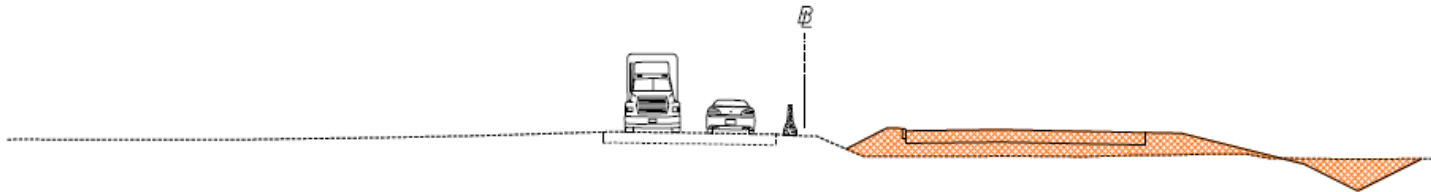
- **Total Project Cost: \$107.7 Million**
- **Construction Contract Value: \$89.9 Million**
- **Project Length: 5 Miles**
- **Right-of-Way Acquisition: 55 Parcels  
(Including up to 40 Acres from MWAA)**
- **Adjustments to 9 Utilities**
- **Project Duration: 50 months**

# Project Schedule

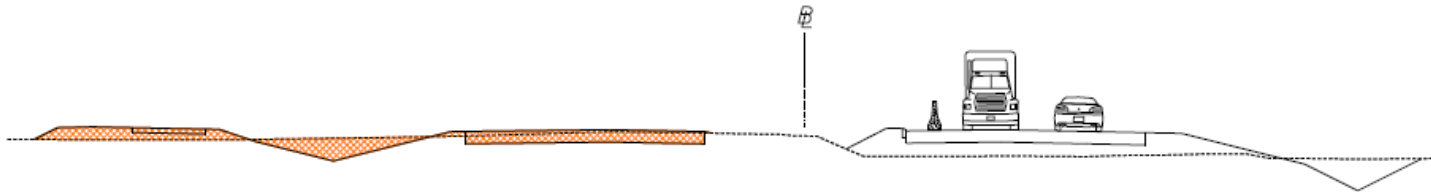
<b>June 2014</b>	Notice To Proceed
<b>June 2014 - Spring 2015</b>	Complete Design / Permitting
<b>Spring - Fall 2016</b>	Right of Way Acquisition
<b>Fall 2015 – Spring 2017</b>	Utility Relocations
<b>Fall 2015 – Spring 2017</b>	Stage 1 Construction
<b>Early 2017- Spring 2018</b>	Stage 2 Construction
<b>Summer 2018</b>	Stage 3 / Complete Project

# Construction Sequence Stages 1, 2 & 3

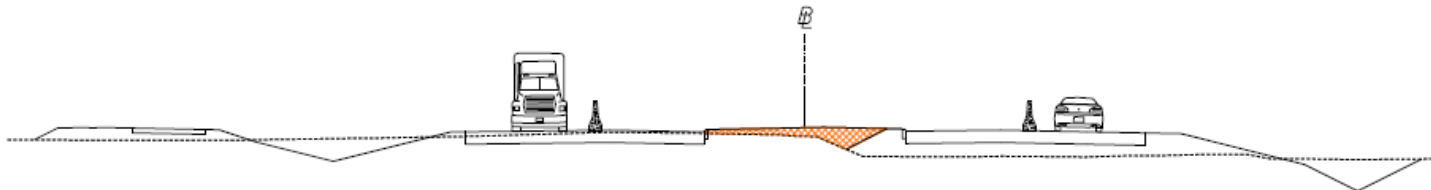
## Stage 1 - Construct New Half-Section



## Stage 2 - Re-Construct Existing Section



## Stage 3 - Complete Median & Turn Lanes





# Completed Project Activities

- **Right-of-way Acquisitions** (53 of 55 Properties)
- **Utility Relocations**
  - Dominion Virginia Power & NOVEC
    - Overhead – 9,350 feet & 36 poles
    - Underground – 990 feet
  - Communications Duct Bank
    - 70,000 feet of ducts installed



# Completed Project Activities

## ➤ Earthwork

- 221,886 Cubic Yards of Dirt Moved (24,654 Truck Loads)
- 5 Stormwater Management Ponds Installed – 658 Tons of Rip Rap Installed





# Completed Project Activities

## ➤ Storm Drainage

- 8,648 feet Storm Pipe Installed
- 86 Storm Structures Installed

## ➤ Waterline Relocation

- 13,538 feet Loudoun Water Waterline Pipe Installed



# Completed Project Activities

## ➤ Box Culverts

- 120 feet Precast Double Barrel Box Culvert
- 500 CY Concrete for Retaining Wing Walls for Box Culvert
- 175 feet Cast-in-Place Triple Barrel Box Culvert
- 418 CY Concrete Placed





# Completed Project Activities

## ➤ Horsepen Dam Spillway Westbound

- 348 feet 60" Drilled Shafts (13 Shafts)
- 1,606 CY Concrete Placed (Substructures)
- 14 Concrete Girders Installed @ 70 Tons Each
- 321,938 lbs of Rebar Installed

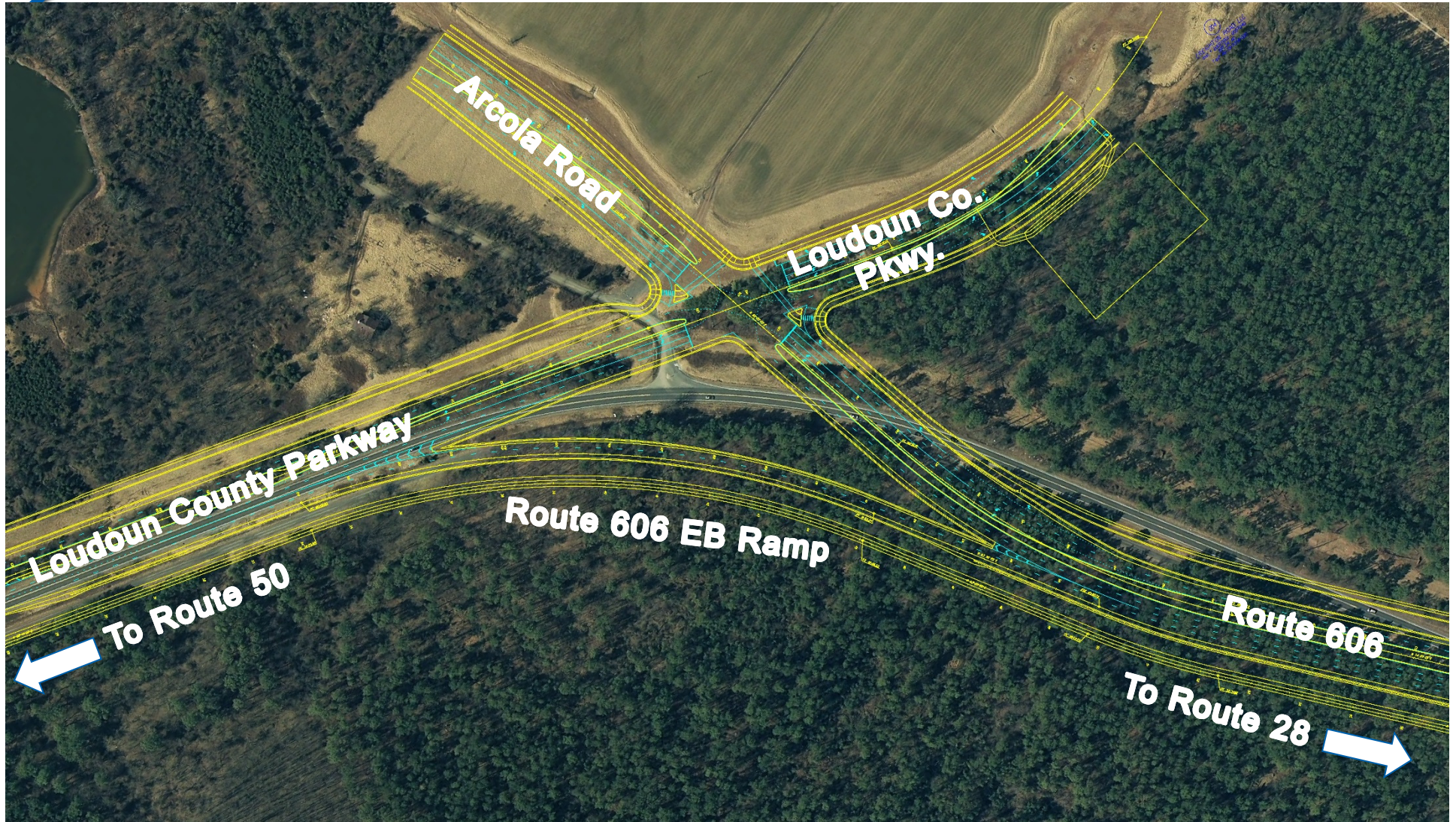






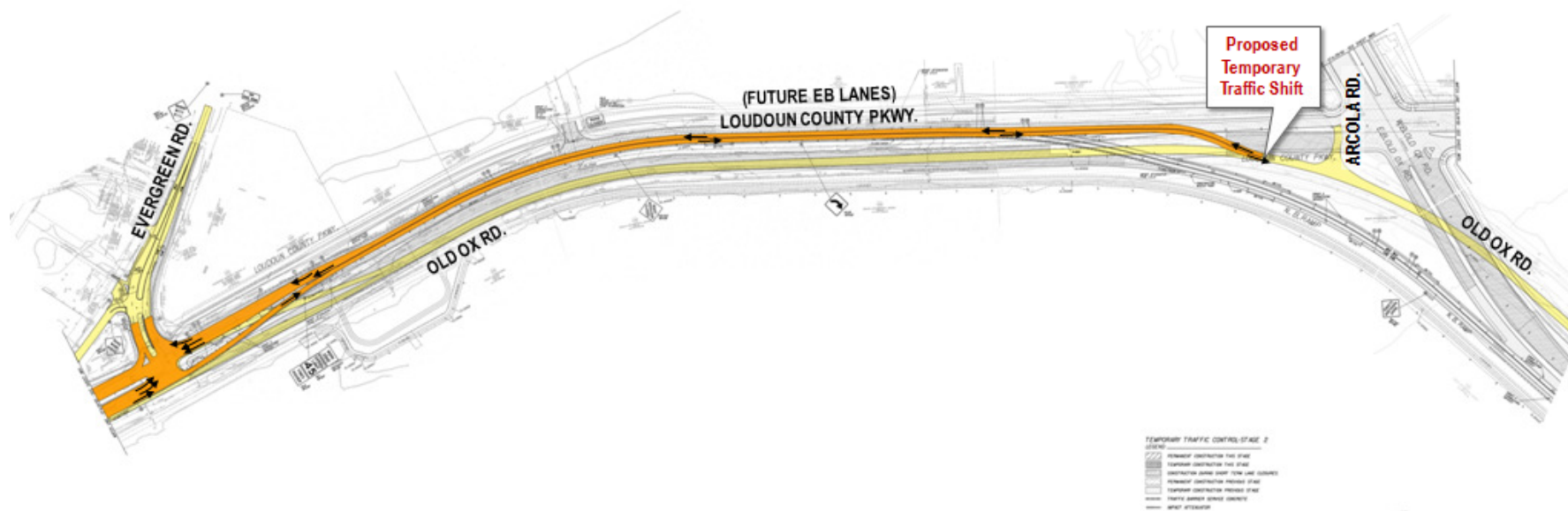
# Loudoun County Parkway Intersection

(Open September 2017)

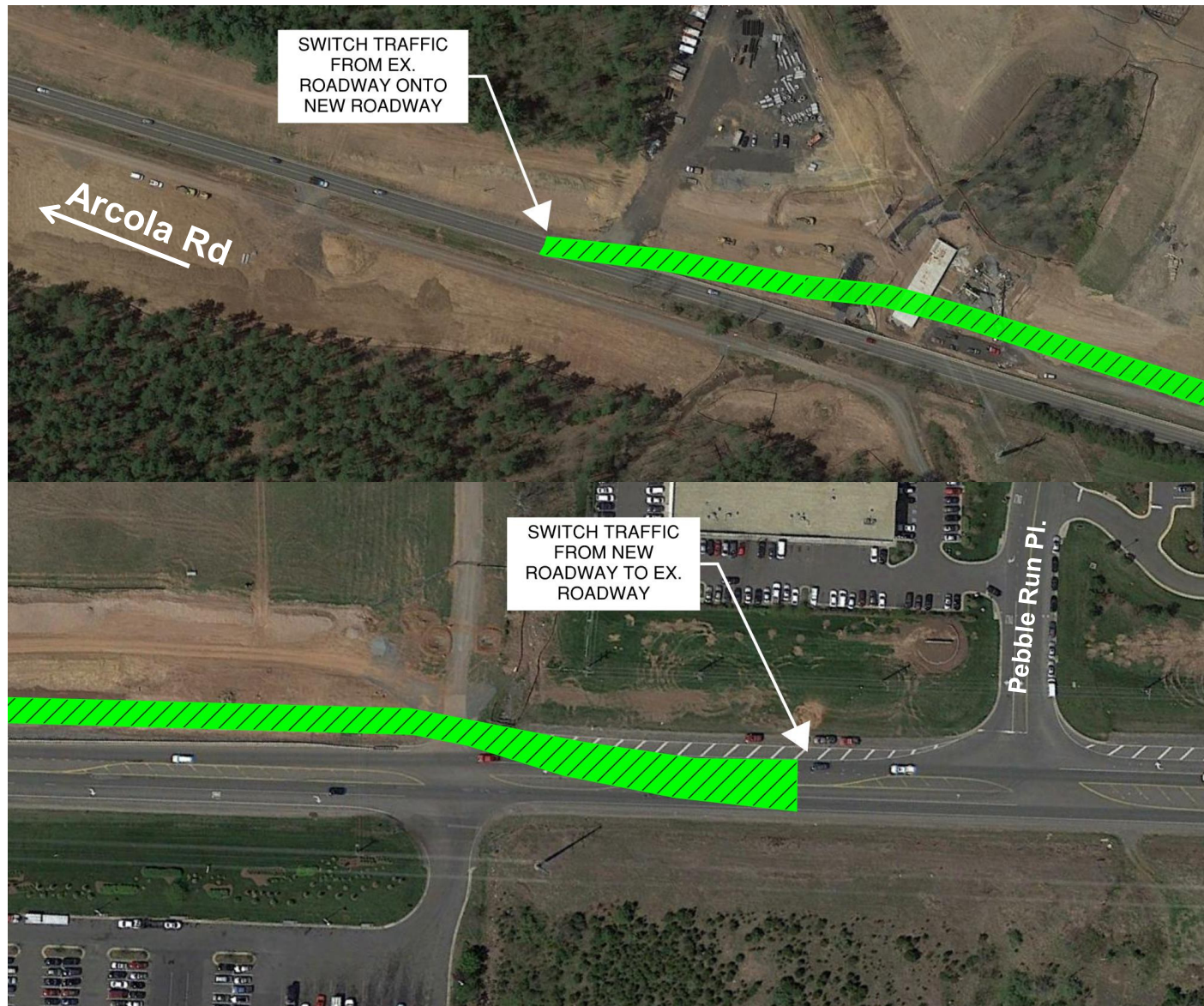




## Shift Traffic Onto New Roadway – Evergreen Mills to Arcola Rd – December 2016



# Shift Traffic Onto New Roadway – Construction Ent. 3 to Pebble Run Pl – December 2016



## For More Information About Route 606 Widening Project:

[http://www.virginiadot.org/projects/northernvirginia/old\\_ox\\_road\\_widening.asp](http://www.virginiadot.org/projects/northernvirginia/old_ox_road_widening.asp)

(this webpage will be updated throughout the project development)

Or Google: "Route 606 Widening"

# Questions and Answers