



# **Route 15**

## **Stakeholders Committee Meeting**

### **(August 1, 2017)**

9/8/2017: slides 3 and 4 updated to reflect schedule



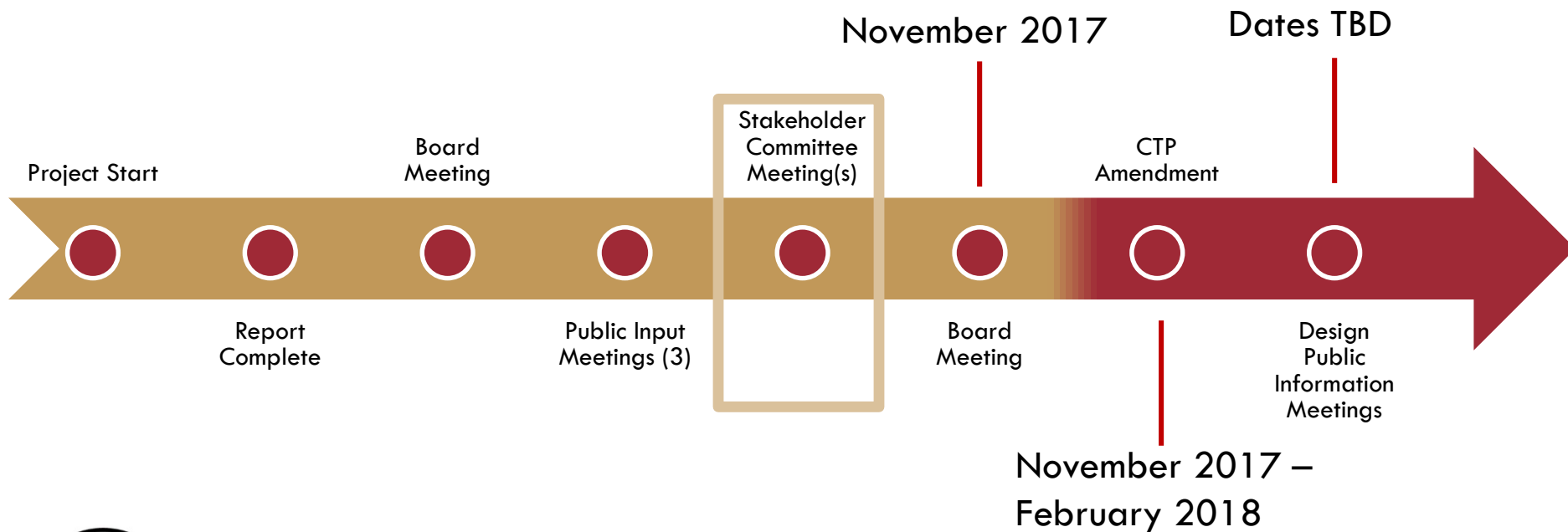


## Agenda

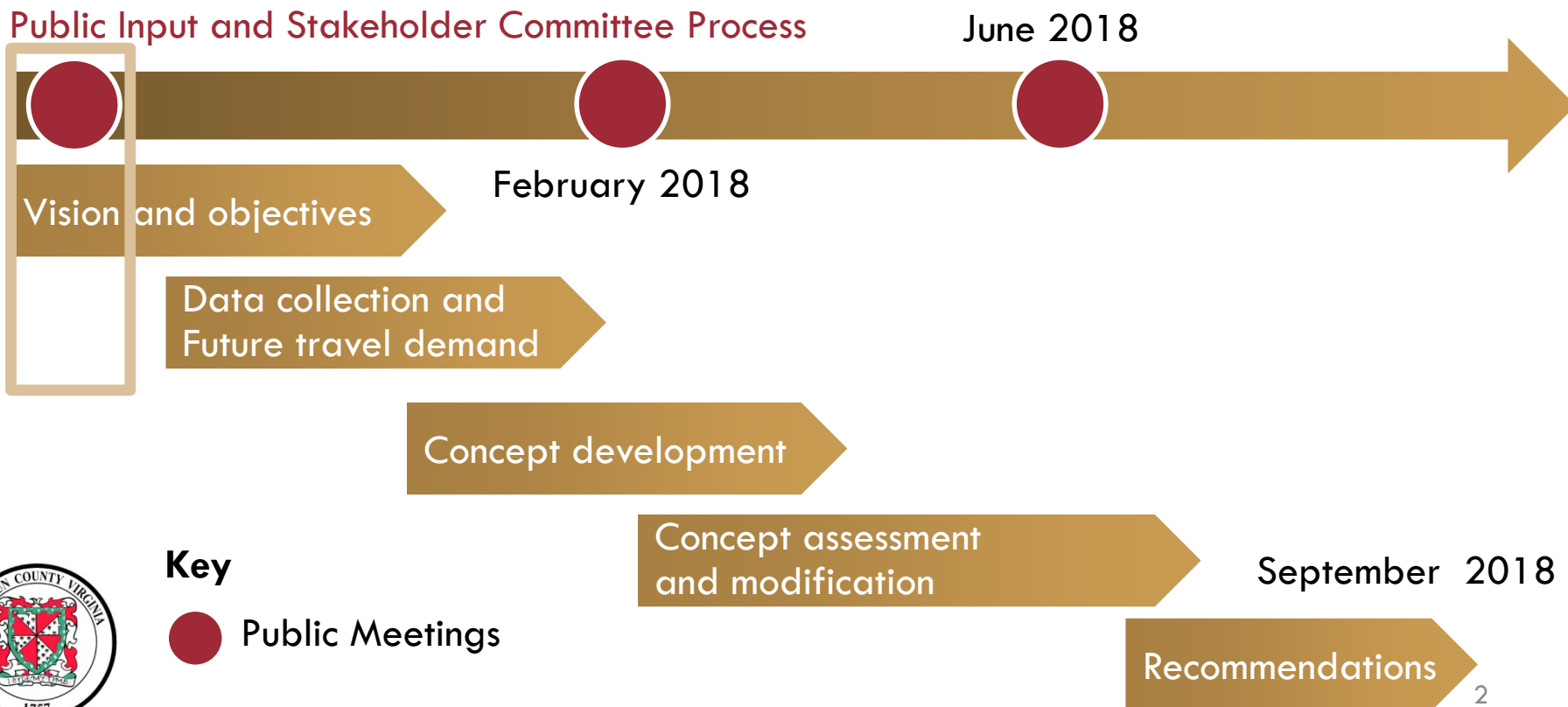
- Introductions
- Stakeholder Charter
- Congestion Report - Battlefield Parkway to Whites Ferry Road
- Safety and Operational Study Vision - Whites Ferry Road to the Maryland State Line
- Wrap-up/Assignments for Next Meeting



## Schedule – Congestion Report (Battlefield Parkway to Whites Ferry Road)



# Schedule – Safety and Operational Study (Whites Ferry Road to Maryland State Line)





## Stakeholders Committee

- 6 Stakeholder Meetings
- Outcomes
  - Congestion Report Recommendations
  - Input on Safety and Operations Study Vision and Goals
  - Input on Concept Development
  - Review Draft Concept Recommendations
- Process
- Charter





# **Route 15 Congestion Report**

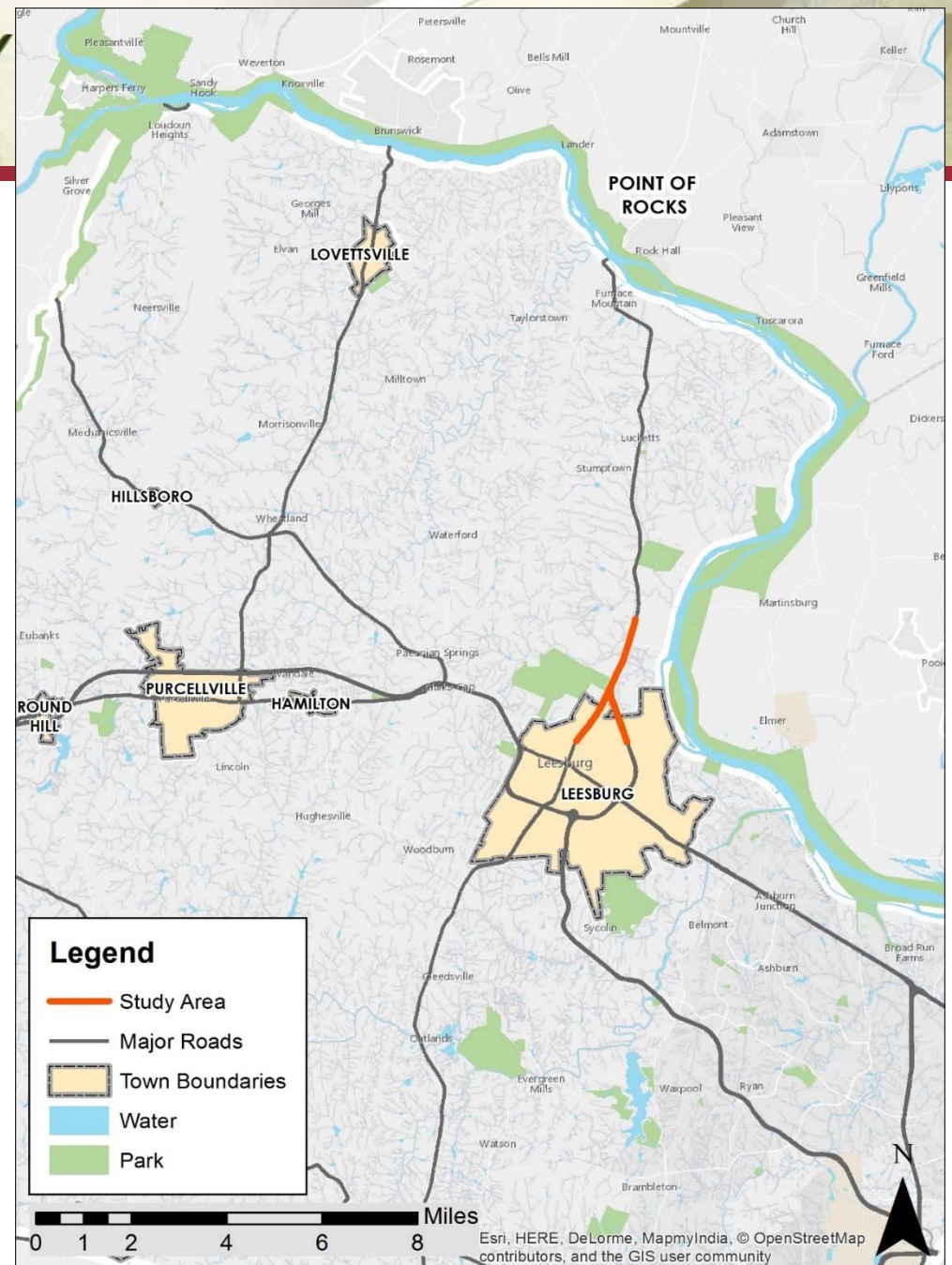
## **(Battlefield Parkway to Whites Ferry Road)**





## Congestion Report

- Study Area – Battlefield Parkway to Whites Ferry Road/Raspberry Drive
- Existing Conditions, 2020, and 2040 Conditions
- Weekday AM and PM peak periods





## Report Objectives

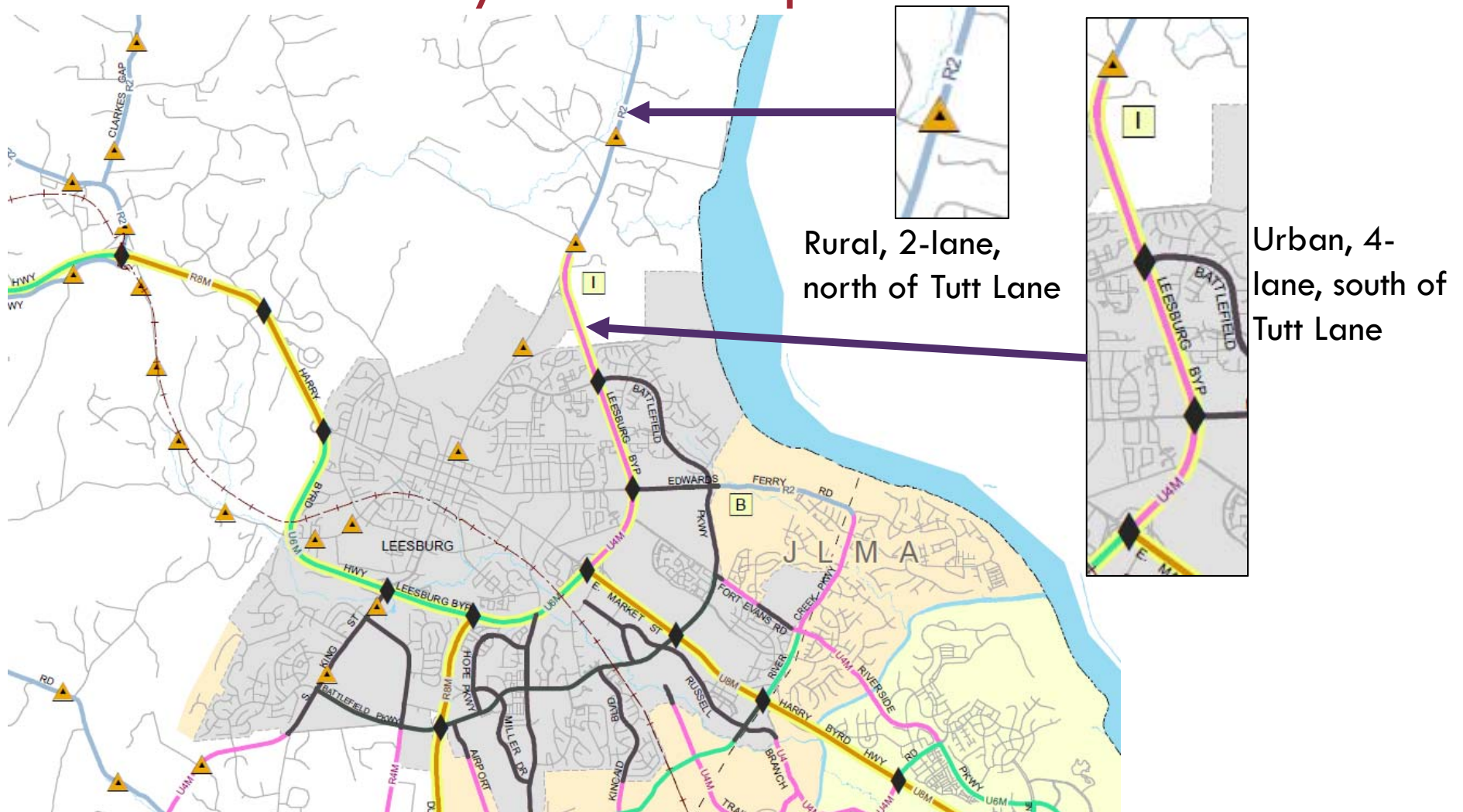
- Build upon previous studies
- Identify improvements to alleviate existing congestion
- Pursue lower cost and context sensitive solutions







## Countywide Transportation Plan



## Coordination To Date

- Board of Supervisors
- Town of Leesburg Staff and Council
- VDOT
- Journey Through Hallowed Ground
- Catoctin Coalition
- LCPS
- Bike Loudoun

### **1<sup>st</sup> Round of Public Input**

June 26<sup>th</sup> Leesburg

July 8<sup>th</sup> Lucketts

July 15<sup>th</sup> Lucketts





## Route 15 Congestion Report Conclusions

- Additional capacity (4-lanes) along Route 15 is necessary from Battlefield Parkway to north of Whites Ferry Road
- Intersection modifications at Whites Ferry Road and at King Street
- Consider a phased implementation to provide some congestion relief as soon as possible





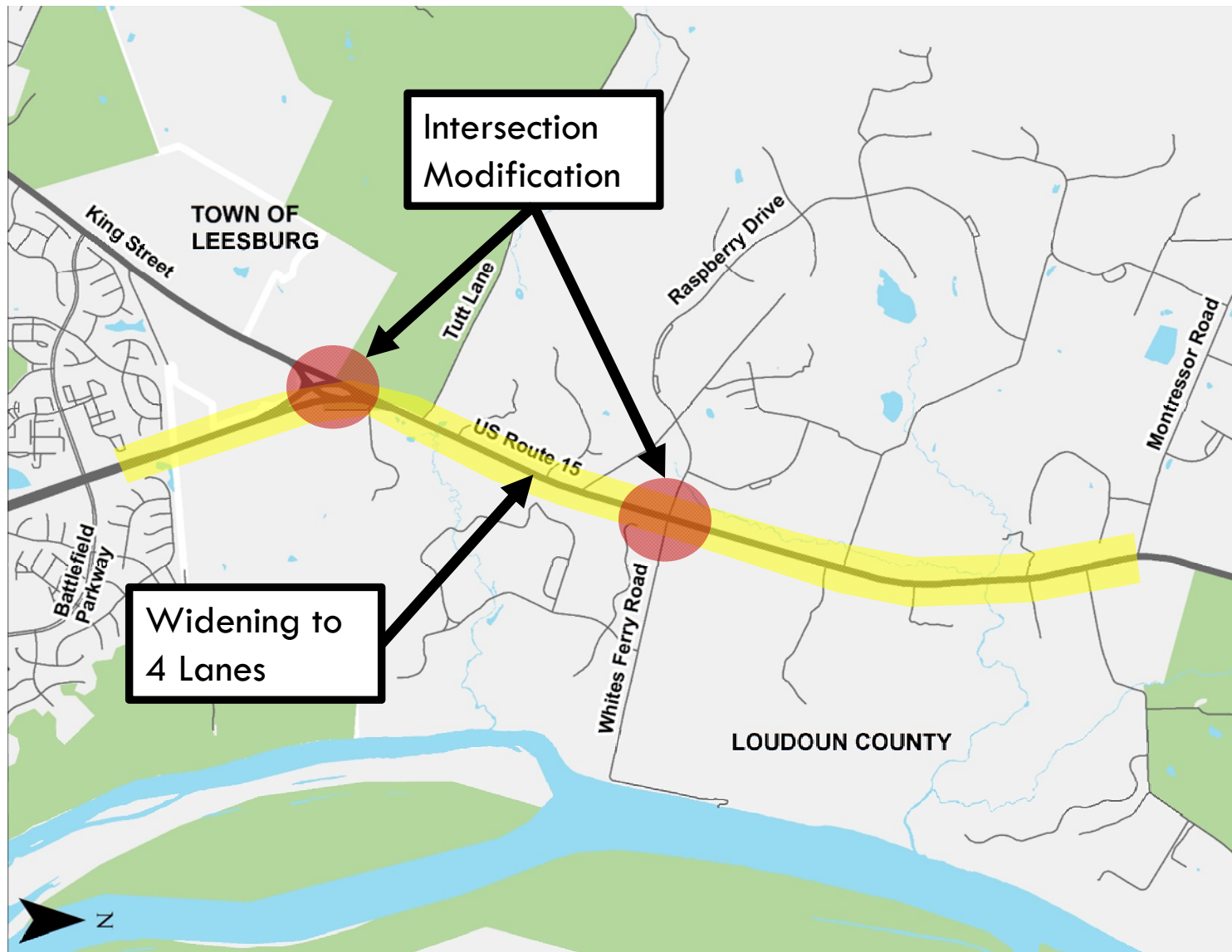
## Board of Supervisors Meeting (May 18, 2017)

As amended by Supervisor Higgins

- Expand study to Maryland state line (safety and operations)
- Initiate public input process
- Establish a stakeholder committee
- Return to Board after public input sessions
- Amend the Countywide Transportation Plan to reflect necessary revisions

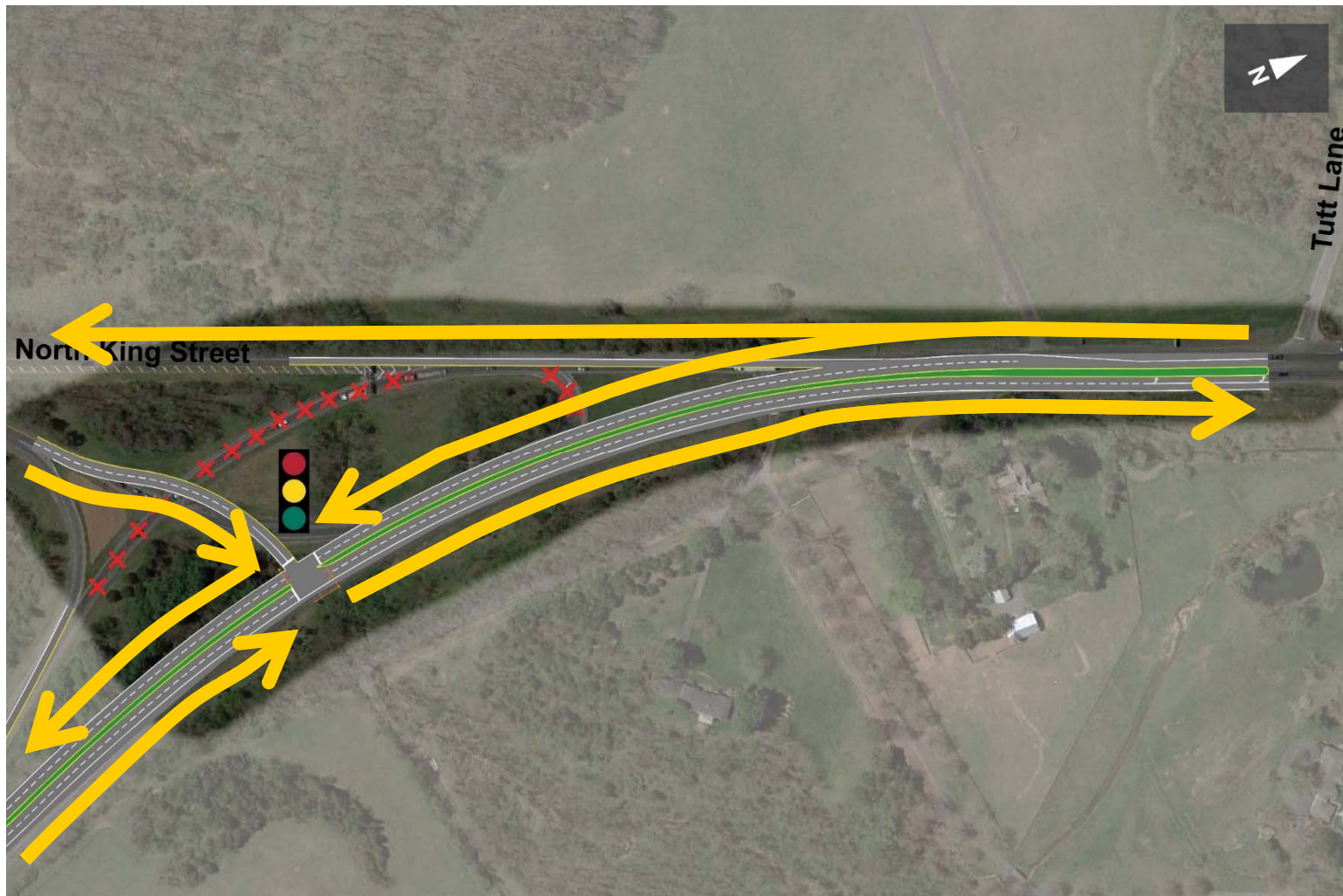








## King Street - Traffic Signal



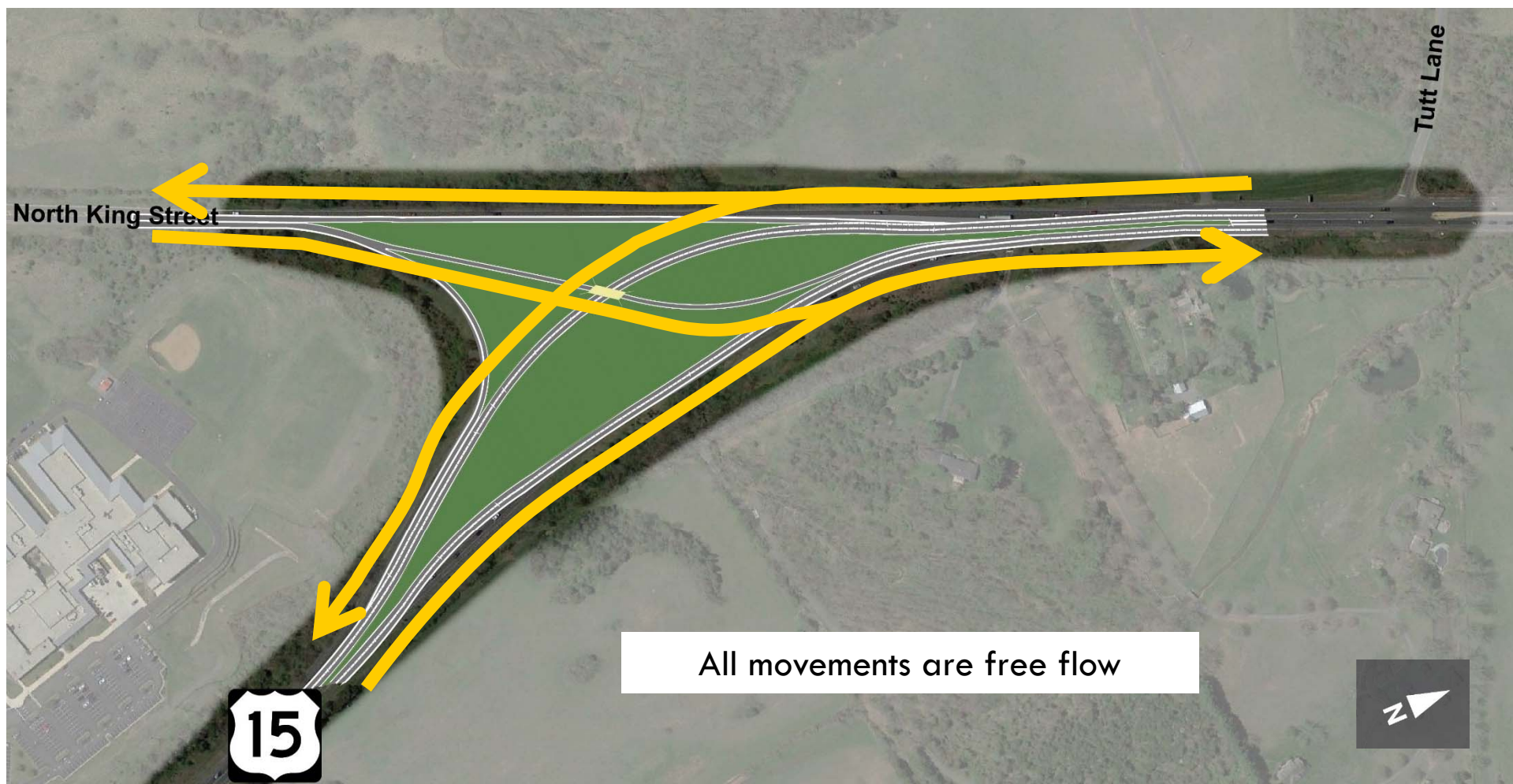
## King Street — Roundabout(s)

\*further study required



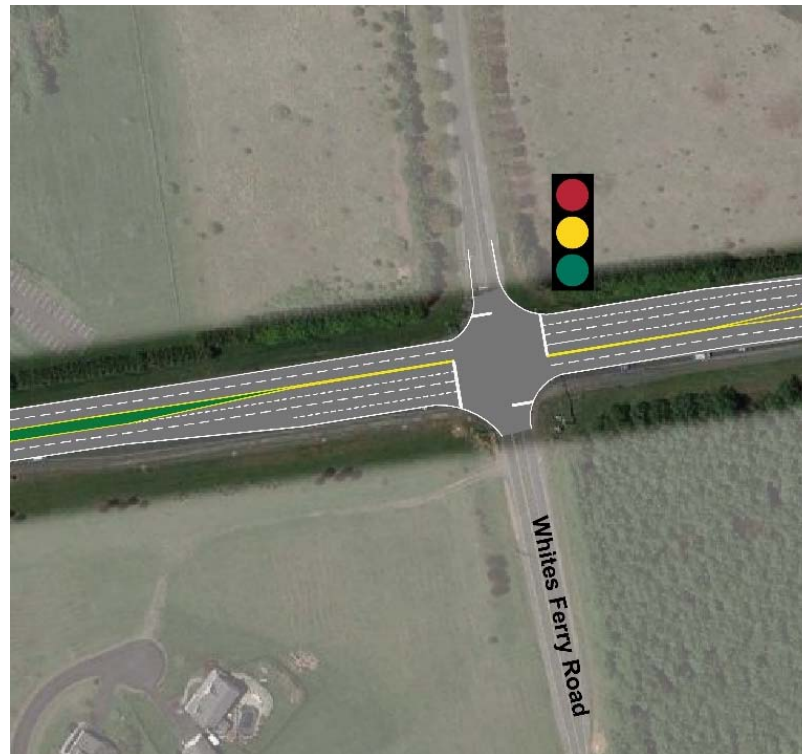


## King Street – Grade Separation





## Whites Ferry Road – Traffic Signal





## Whites Ferry Road - Roundabout

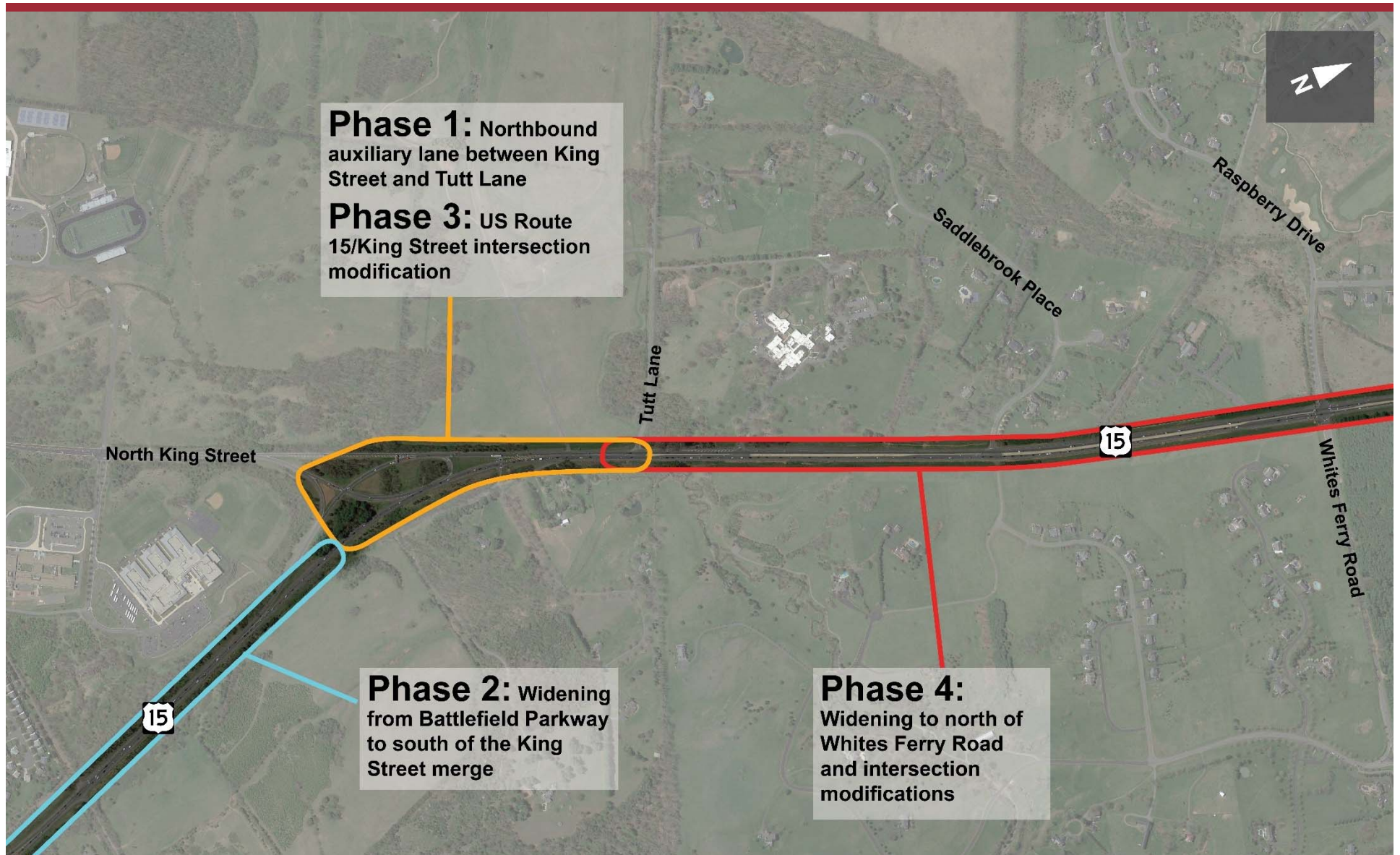




## Whites Ferry Road – Bowtie Roundabout



# Interim Phases







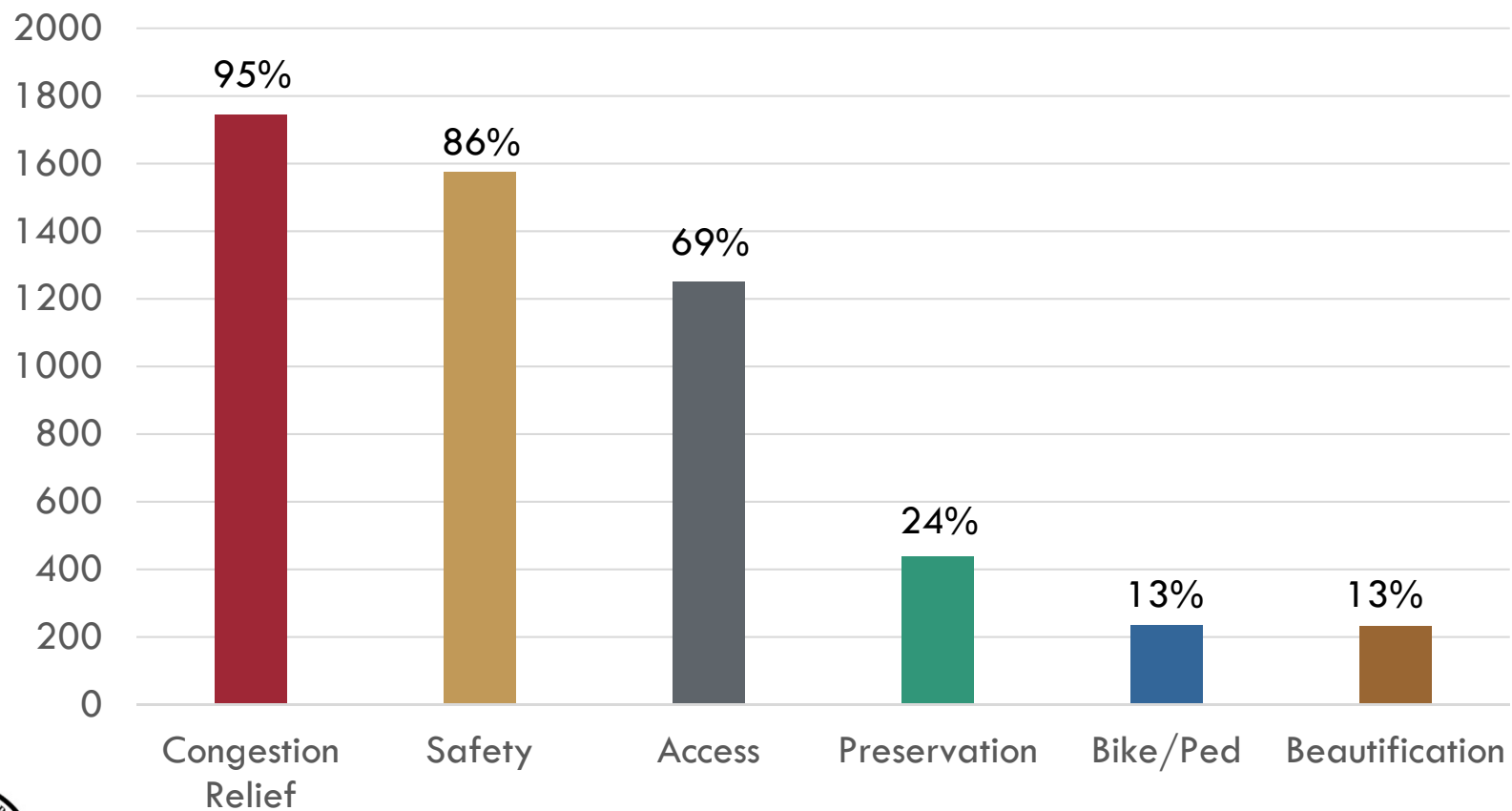
## Summary of Public Input

- Public Meetings – 239 Participants
  - Public Meeting #1 (6/26) – 85 Attendees
  - Public Meeting #2 (7/08) – 93 Attendees
  - Public Meeting #3 (7/15) – 61 Attendees
- 26 emails through the Route 15 webpage
- 2,006 unique participants in the online survey





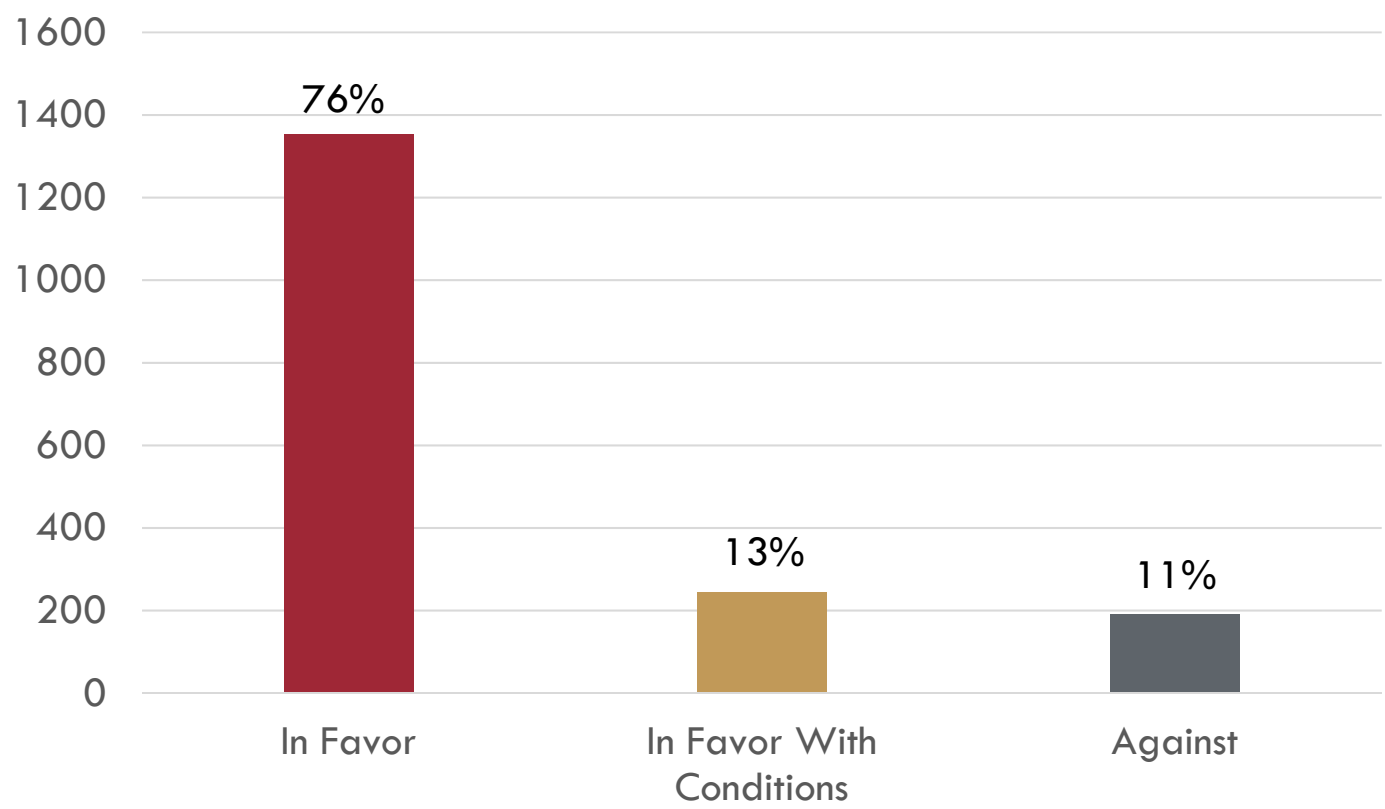
## Input on Priorities (Top 3)



Source: public meeting and web survey input



# Input on Route 15 Widening between Battlefield Parkway and Whites Ferry Road

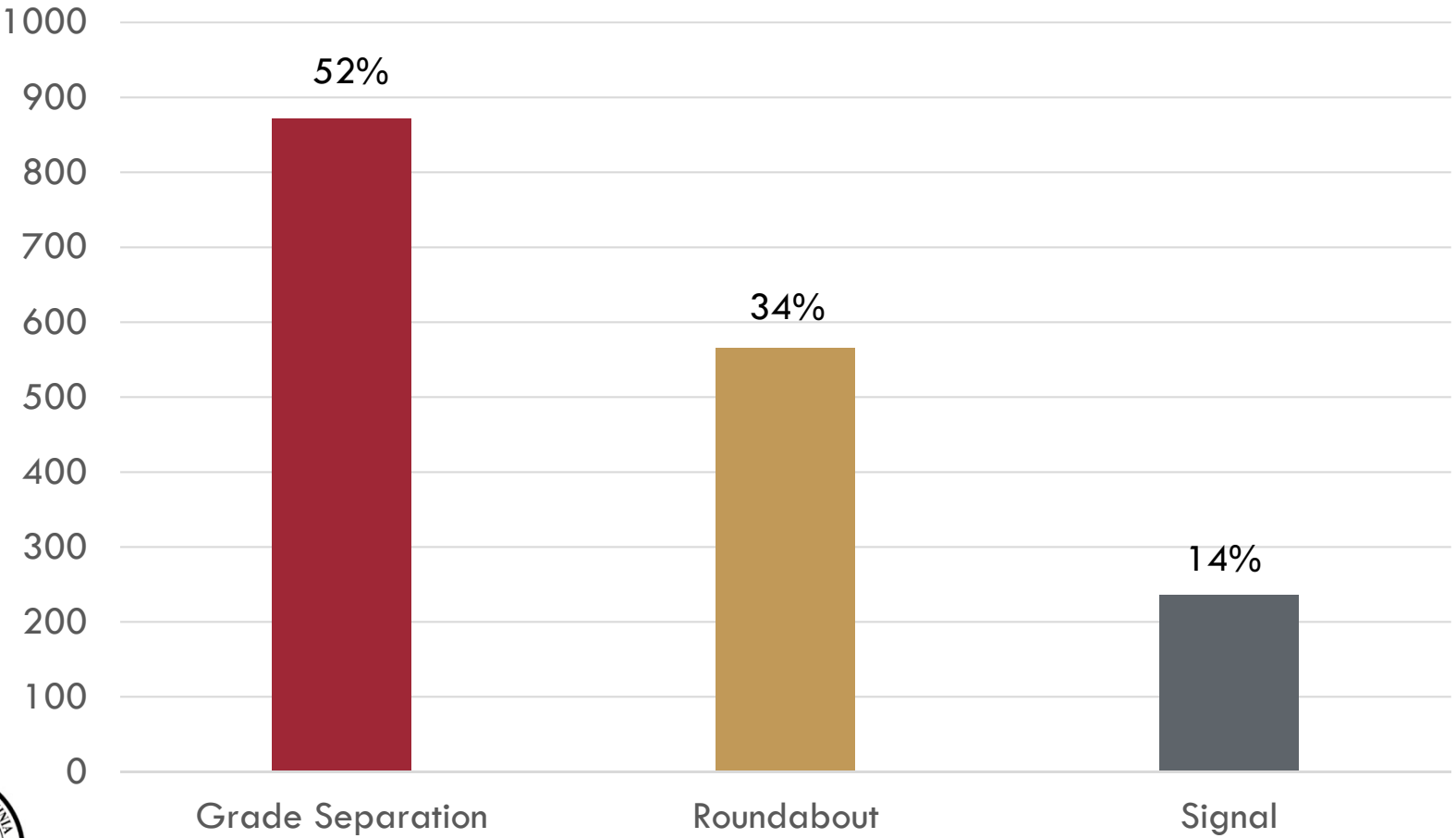


Source: public meeting and web survey input





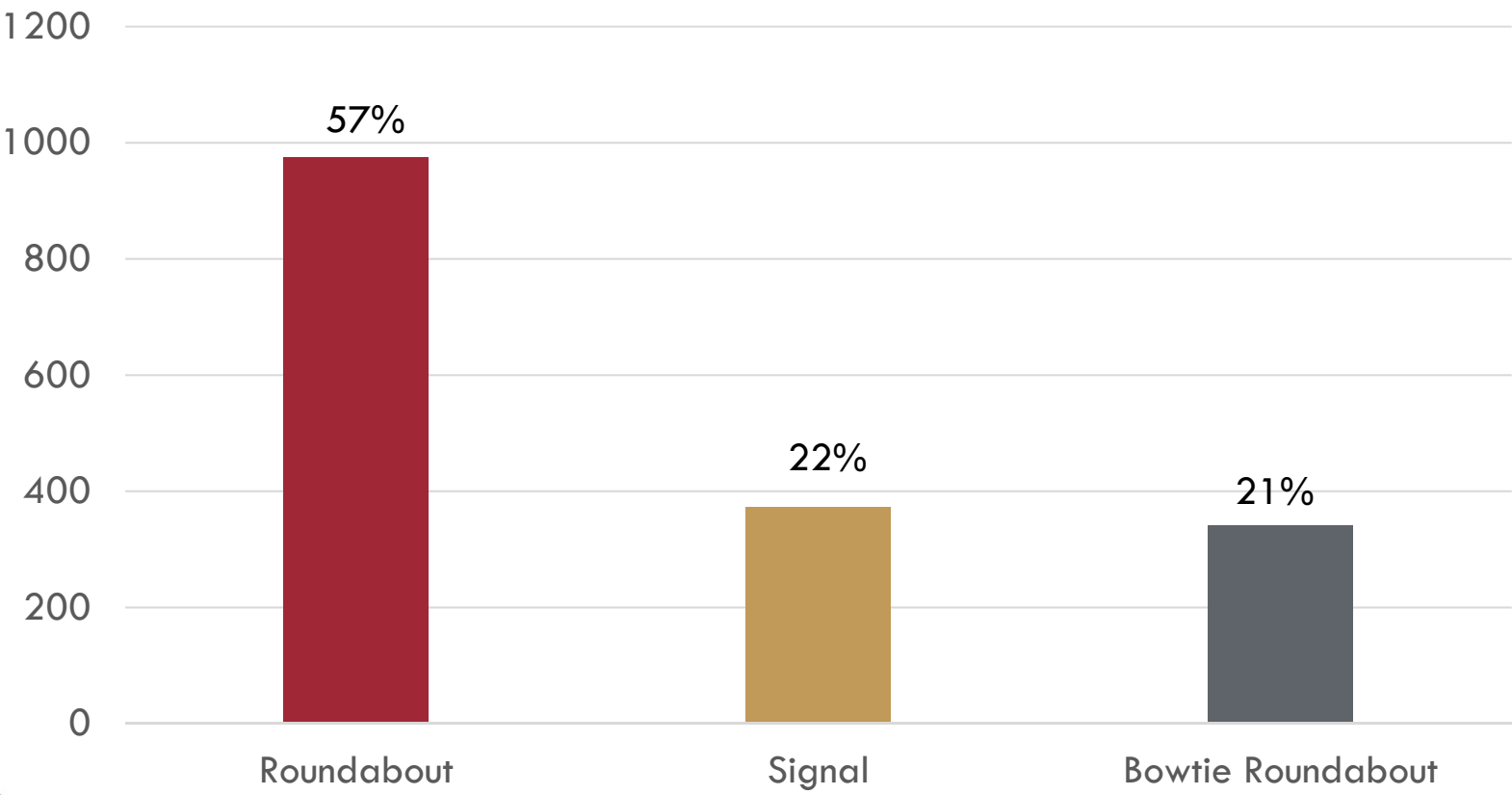
# Input at King Street



Source: public meeting and web survey input



# Input at Whites Ferry Road/Raspberry Drive



Source: public meeting and web survey input



# Route 15 Congestion Report

Questions?

Assignment



**ROUTE 15**

Safety and Operations Study  
FROM WHITES FERRY ROAD TO THE MARYLAND STATE LINE

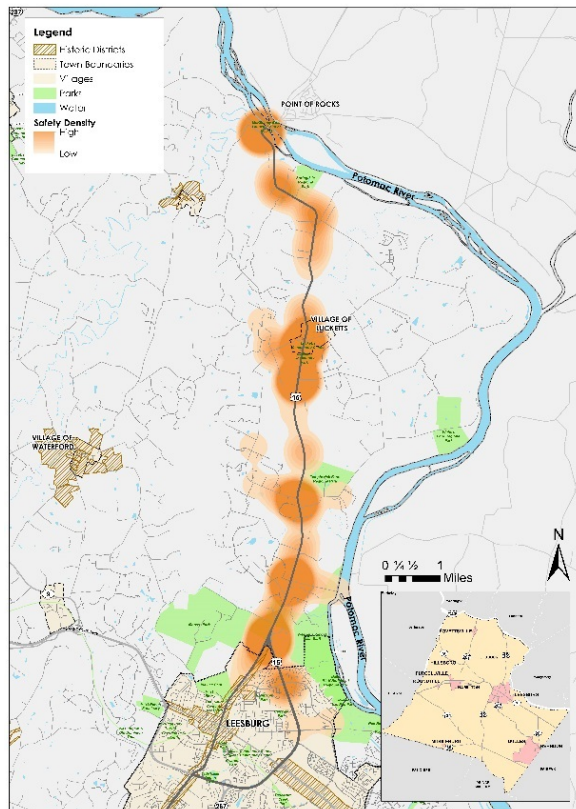
# Route 15 Safety and Operational Study

- Public Input
- Draft Vision Statement

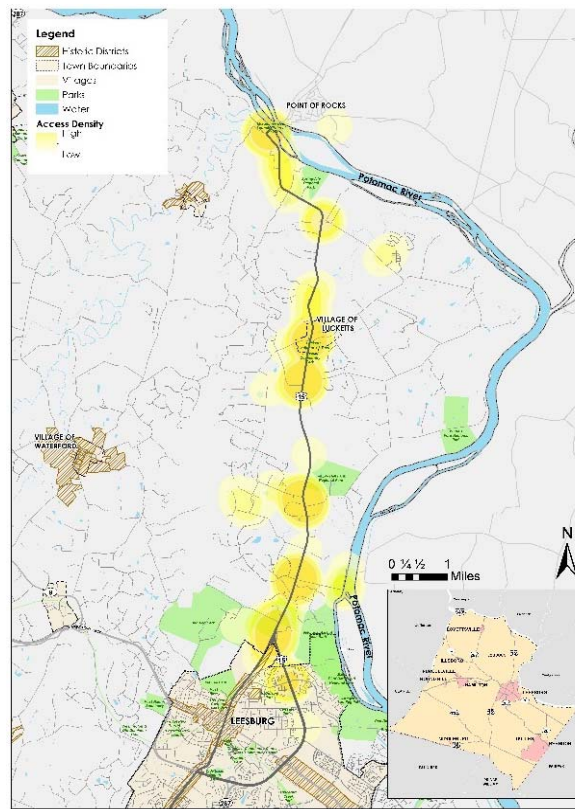
# ROUTE 15

Safety and Operations Study  
FROM WHITES FERRY ROAD TO THE MARYLAND STATE LINE

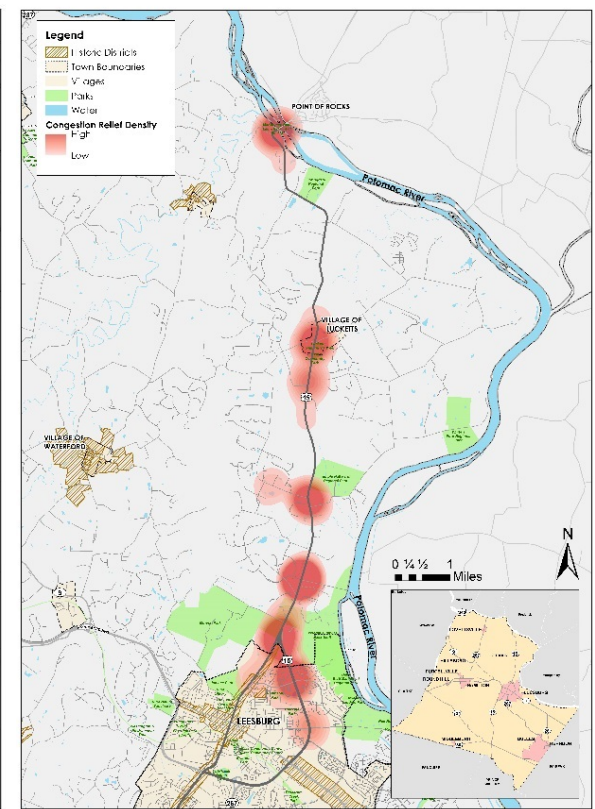
## Input on Issues and Opportunities



Safety



Access



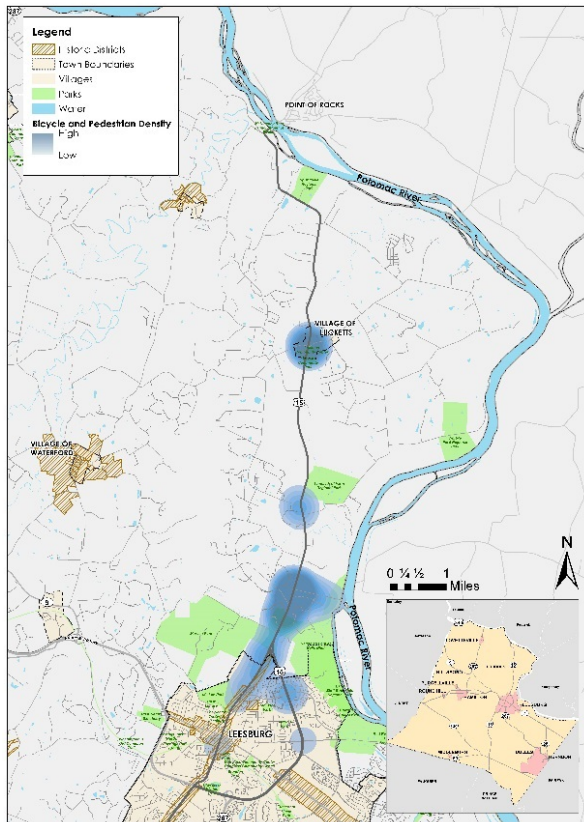
Congestion Relief



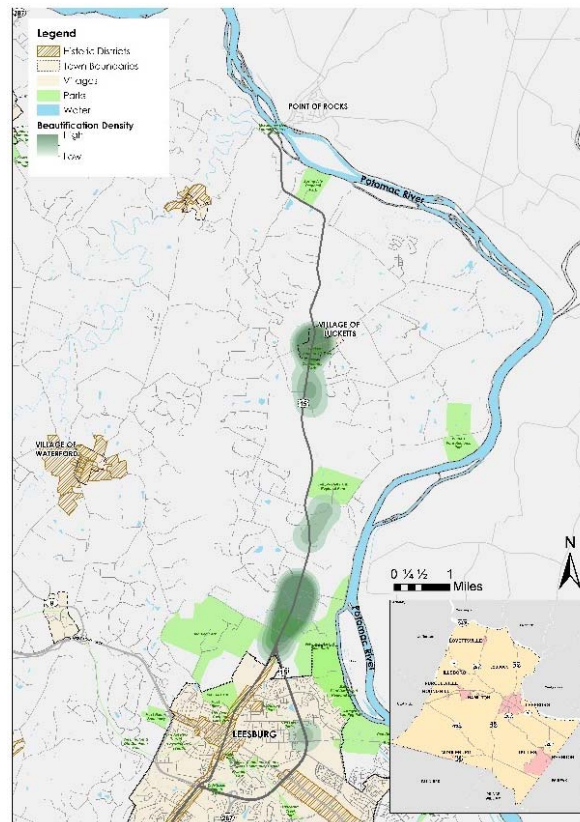
# ROUTE 15

Safety and Operations Study  
FROM WHITES FERRY ROAD TO THE MARYLAND STATE LINE

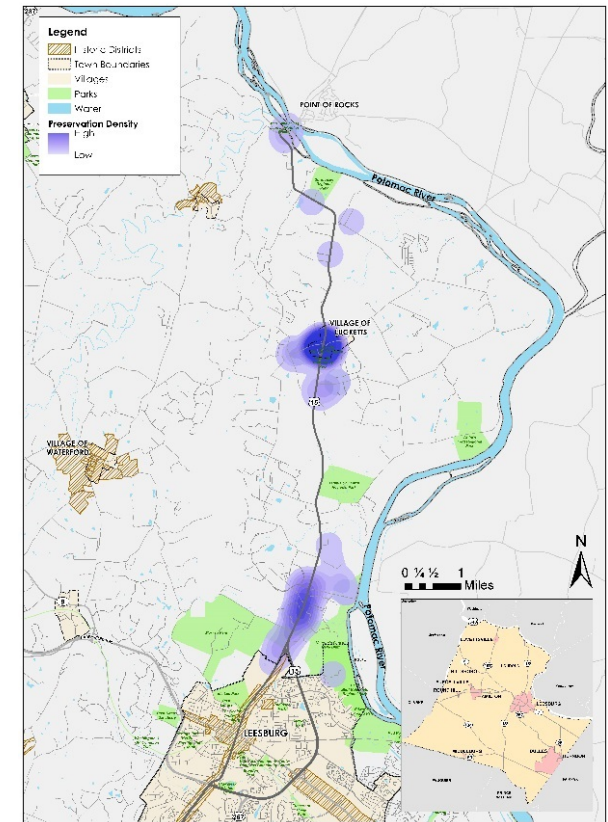
## Input on Issues and Opportunities



Bike/Pedestrian



Beautification



Preservation

## Safety and Operations Study

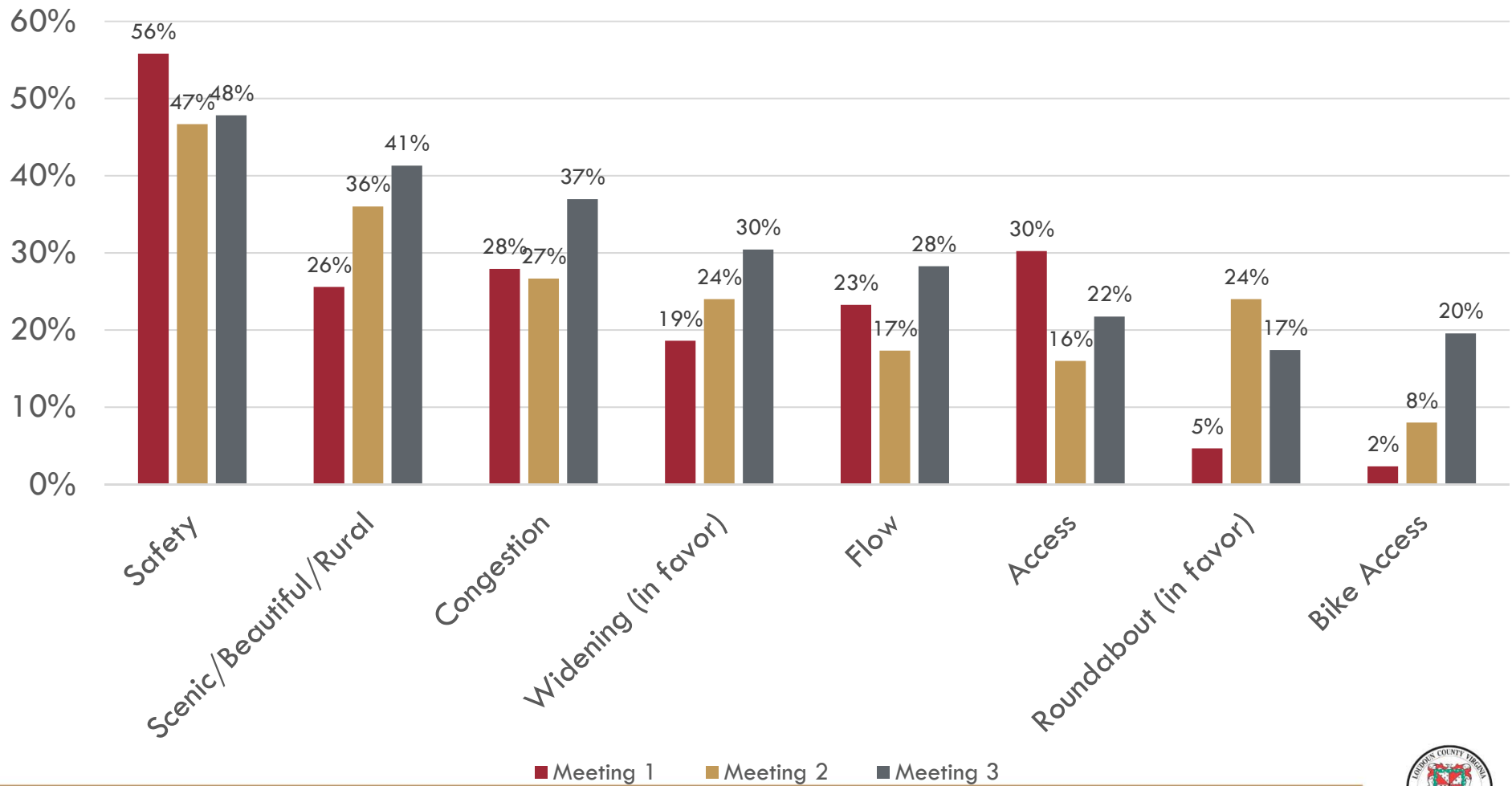
FROM WHITES FERRY ROAD TO THE MARYLAND STATE LINE



# ROUTE 15

Safety and Operations Study  
FROM WHITES FERRY ROAD TO THE MARYLAND STATE LINE

## Input on Visioning Key Words/Phrases





## Safety and Operations Study Draft Vision

The Route 15 corridor from Leesburg to Maryland will emphasize safety.

The corridor will provide local access and mobility for community and through traffic.

The corridor's design will highlight Loudoun's natural beauty and maintain the historic rural character.

## Assignments for Next Meeting

Meet with your Group/Organization to discuss the following:

- Congestion Report Survey
- Draft Vision

**Project website: [www.loudoun.gov/route15](http://www.loudoun.gov/route15)**

# ROUTE 15

## Route 15 Stakeholder Committee Charter

Whereas, the Loudoun County Board of Supervisors wishes to establish a Route 15 Stakeholders Committee and will comment on the Route 15 Corridor Study from the Town of Leesburg to the Maryland State border.

### Stakeholders

The Stakeholders Committee shall consist of 20 members, one from each community organization identified below. The chairs of the organizations shall nominate a member of their group to serve on the Stakeholders Committee.

#### *HOA Representatives:*

1. Big Springs Farms Community Association
2. Big Springs Owners Association
3. Exeter
4. Falconaire (pending)
5. Glynn Terra (pending)
6. Lees Crossing
7. Loy Estates
8. Potomac Crossing
9. Raspberry Falls
10. Saddlebrook
11. Selma Estates
12. Village Green/Elysian Heights

#### *Community Organizations/Entities:*

1. Catoctin Coalition
2. Chamber of Commerce
3. The Journey Through Hallowed Ground
4. Lucketts Business Collaborative
5. Lucketts Ruritan Club
6. Morven Park
7. Raspberry Falls Golf and Hunt Club
8. Taylorstown Community Association

### Member Roles and Responsibilities

- Serve as an advisory group to professional project staff and partner agencies
- Shall attend each Stakeholder Committee meeting (six meetings anticipated). In the case of absence, the committee member must designate an alternate to take their place in the meeting
- Encouraged to attend the Public Meetings
- Provide recommendations on Route 15 improvements based on technical analysis and discussion of public input comments
- Seek feedback from the organization you are representing prior to each stakeholder meeting
- Advocate for project success

Staff assistance to the Stakeholders Committee shall be managed by the Loudoun County Department of Transportation and Capital Infrastructure (DTCI).

Adopted: August 1, 2017

Signed: \_\_\_\_\_  
\_\_\_\_\_ (Printed name)



# ROUTE 15



Name \_\_\_\_\_

Address \_\_\_\_\_

City \_\_\_\_\_

State \_\_\_\_\_

Zip \_\_\_\_\_

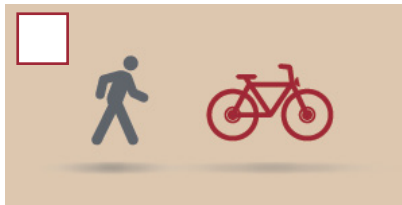
Email \_\_\_\_\_

## A. What are your top 3 priorities for the southern segment? *(in no particular order)*

1) Access to/from Rt. 15



2) Bike and Pedestrian Facilities



3) Beautification



4) Congestion Relief



5) Preservation



6) Safety



## B. What is your position on widening Route 15 from 2 lanes to 4 lanes between Battlefield Pkwy and north of Whites Ferry Rd?

1) ☐ I support widening **2 to 4** ✓

2) ☐ I support widening if my concerns are addressed **2 to 4** ...

3) ☐ I do not support widening **2 to 4** ✗

Primary concerns:

\_\_\_\_\_  
\_\_\_\_\_  
\_\_\_\_\_  
\_\_\_\_\_

# ROUTE 15



C. Which intersection modification do you want to see at Route 15 and King Street?

1) ☐

Traffic Signal



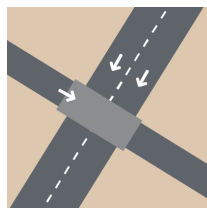
2) ☐

Roundabout(s)  
*(further study required)*



3) ☐

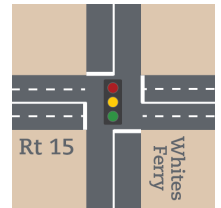
Grade separation  
(flyover)



D. Which intersection modification do you want to see at Route 15 and Whites Ferry Rd/Raspberry Dr?

1) ☐

Traffic Signal



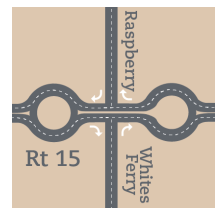
2) ☐

Roundabout



3) ☐

Bow-tie Roundabout



E. If Loudoun was not able to make the proposed changes all at once, would you support a phased approach?

☐ 1) Yes

☐ 2) No

# ROUTE 15



## Draft Corridor Vision

The Route 15 corridor improvements from Leesburg to Maryland will emphasize safety and congestion relief.

The Route 15 corridor improvements will provide local access and mobility for community and through traffic.

The Route 15 corridor improvement's design will highlight Loudoun's natural beauty and maintain the historic rural character.