



Route 15

Stakeholders Committee Meeting #3

(November 16, 2017)



Congestion Report Supplemental Analysis

- Traffic volumes and analysis assumptions same as Congestion Report
- 2020 and 2040 traffic volumes
- Weekday AM and PM peak hours
- Alternative 4 - King Street Flyover and Two-Lane Roundabout at Whites Ferry Road
- Alternative 5 - King Street Flyover and Bowtie Roundabouts at Whites Ferry Road





Route 15 Widening Limits

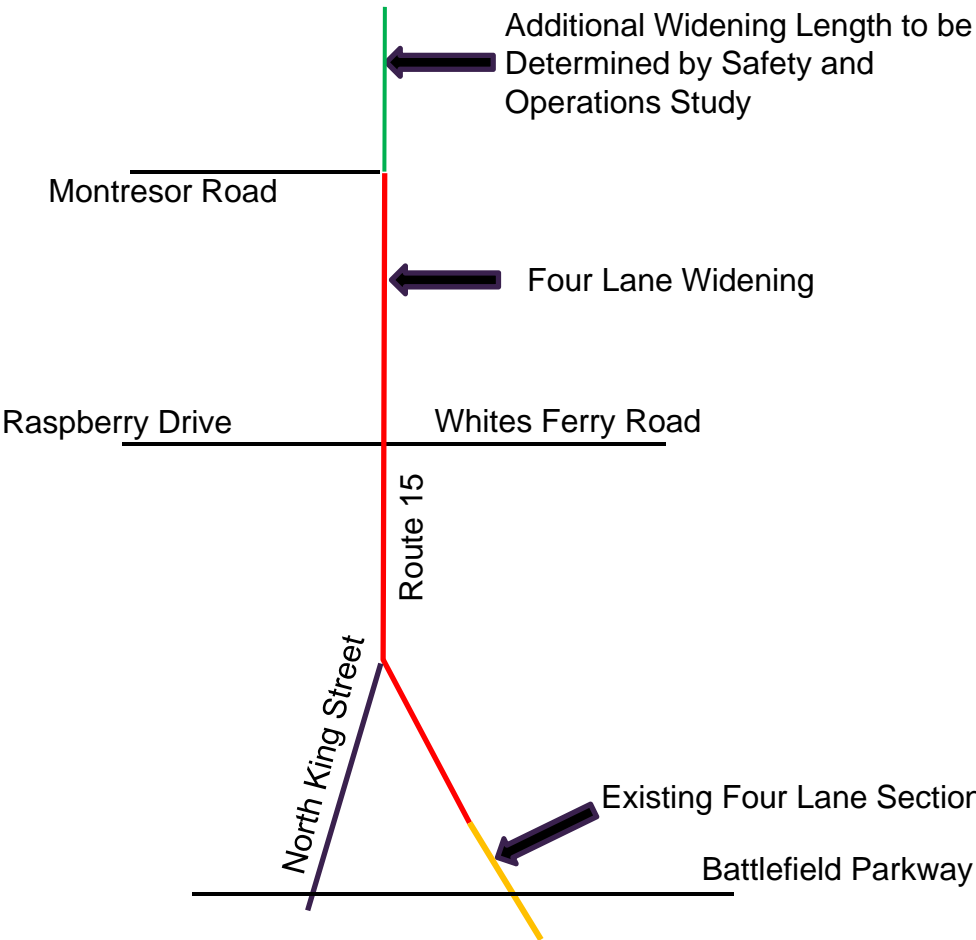
- Alternatives 4A and 5A – limited widening to Montresor Road
- Alternatives 4B and 5B – widening beyond Montresor Road (remove transition from 4 to 2 lanes)





Route 15 Widening Limits

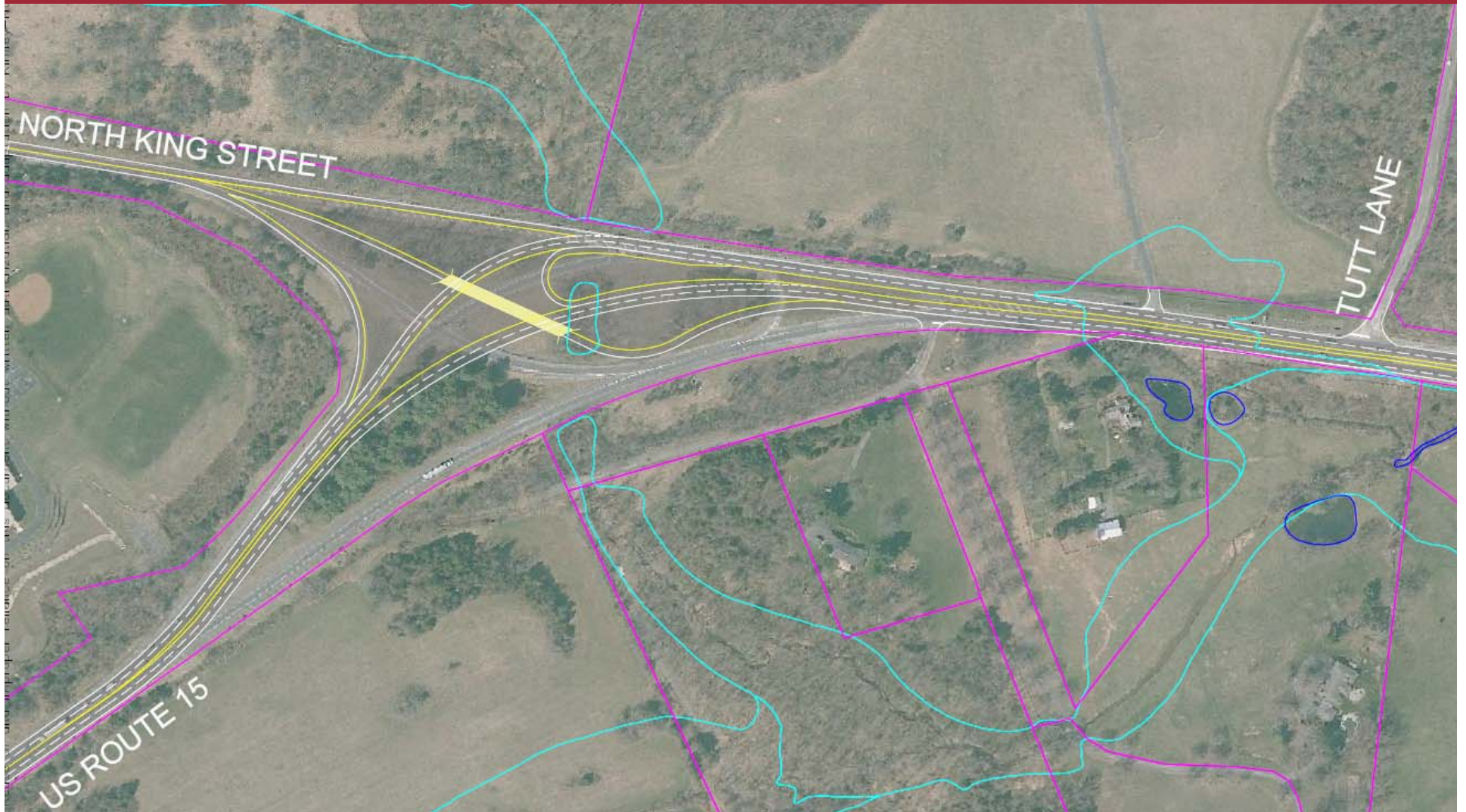
Village of Lucketts



Alternative 4A/4B



Loudoun County VIRGINIA
WHERE TRADITION MEETS INNOVATION

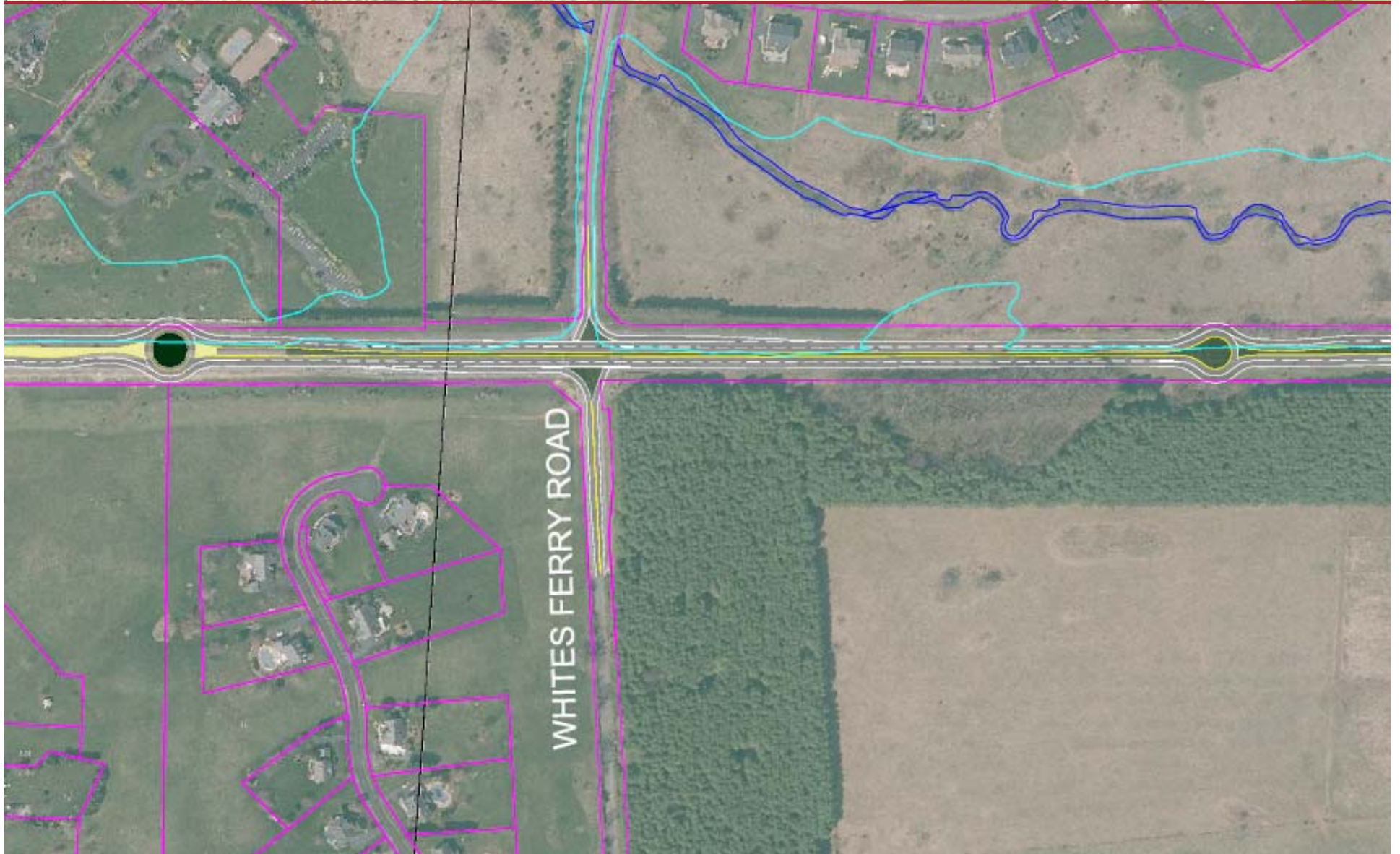


Alternative 5A/5B



Loudoun County

VIRGINIA
WHERE TRADITION MEETS INNOVATION





Results

Table 1: Supplemental Analysis Results

ALT #	Description	Works In 2020?	Works In 2040?
4A	King Street Flyover and Two-Lane Roundabout at Whites Ferry Road with Route 15 widening from Battlefield Parkway to Montresor Road	Yes	No
4B	King Street Flyover and Two-Lane Roundabout at Whites Ferry Road with Route 15 widening from Battlefield Parkway to an undefined location north of the study area	Yes	Yes
5A	King Street Flyover and Bowtie Roundabouts at Whites Ferry Road with Route 15 widening from Battlefield Parkway to Montresor Road	Yes	No
5B	King Street Flyover and Bowtie Roundabouts at Whites Ferry Road with Route 15 widening from Battlefield Parkway to an undefined location north of the study area	Yes	Yes



Supplemental Analysis Conclusions

- King Street flyover, Whites Ferry Road bowtie roundabouts, and Whites Ferry Road two-lane roundabout are viable intersection options
- These options are in addition to the King Street traffic signal and Whites Ferry Road traffic signal options





Congestion Report Process Moving Forward

- VDOT to implement Phase 1 (Spring 2018)
- Staff recommendations to Board (2018)
- VDOT design and design public hearing (2018/2019)
- Identify project funding





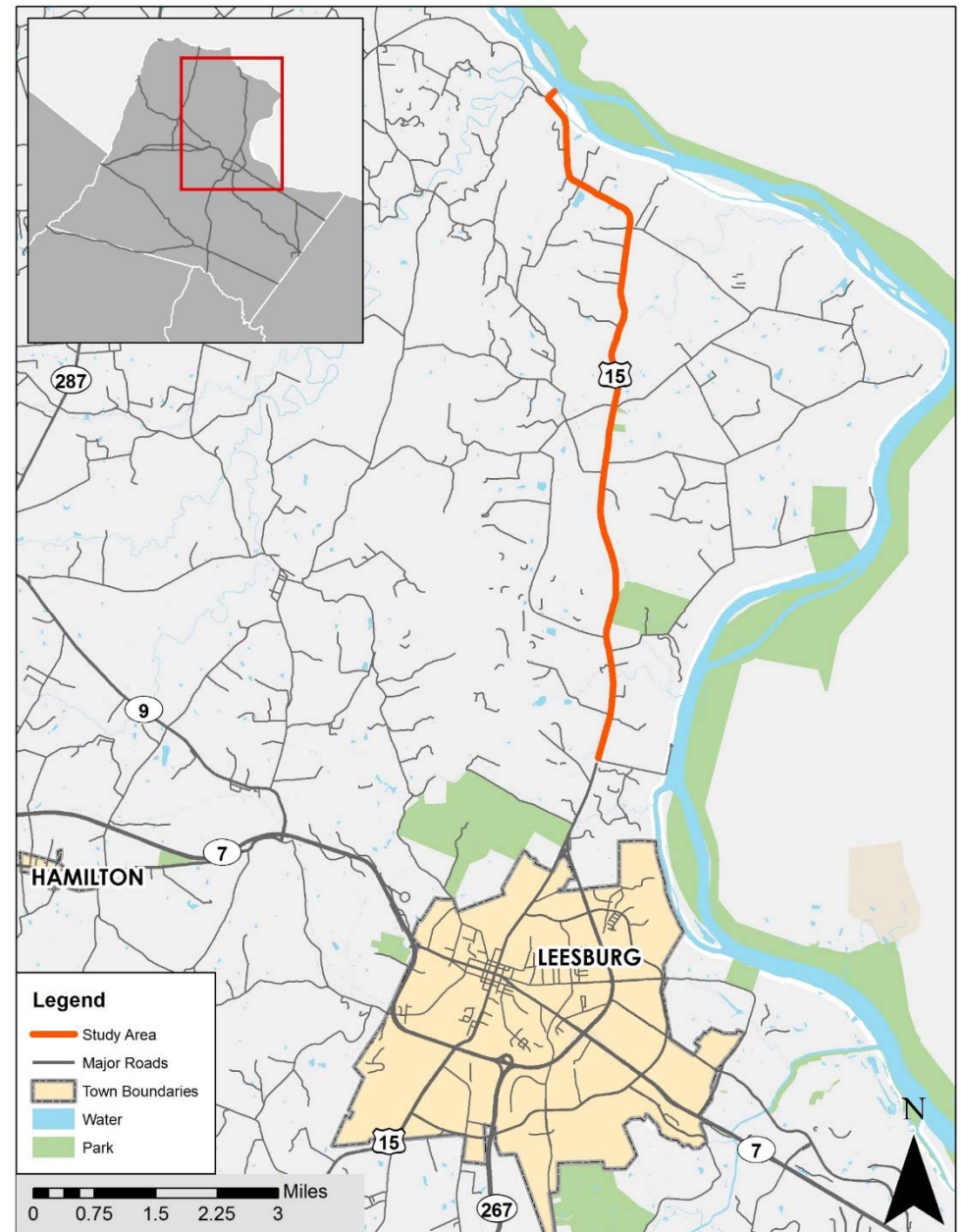
Supplemental Analysis

Discussion



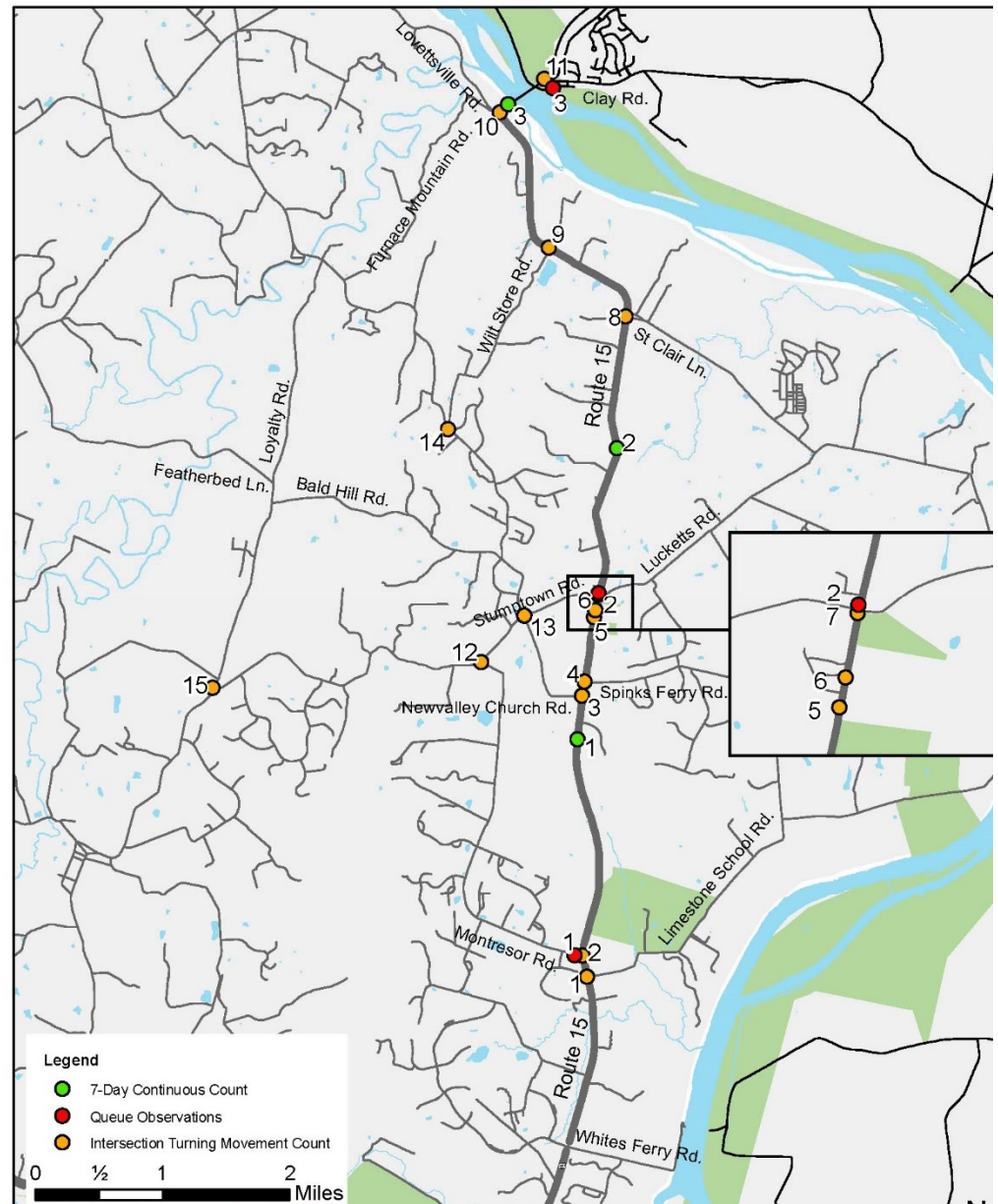
Safety and Operations Study – Existing Conditions

Study Area



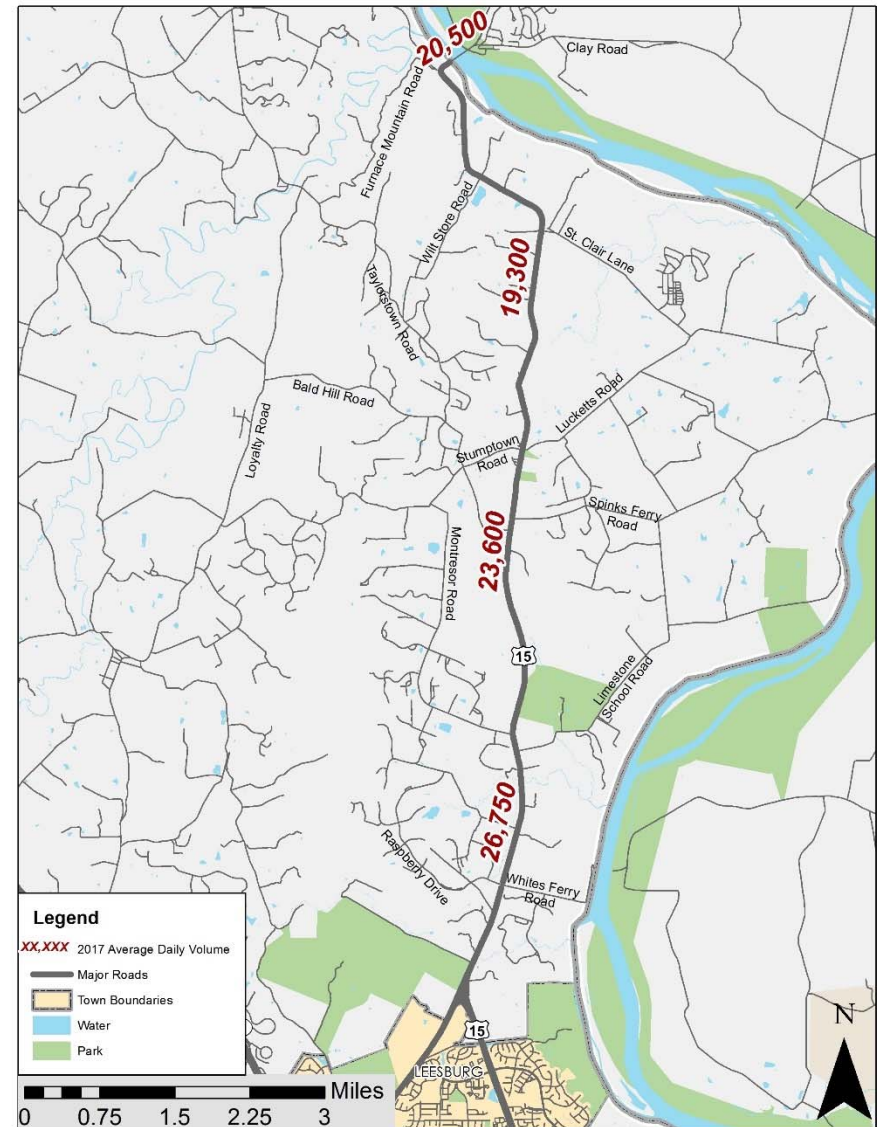
Safety and Operations Study – Existing Conditions

Data collection map

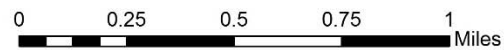


Safety and Operations Study – Existing Conditions

Daily traffic volumes

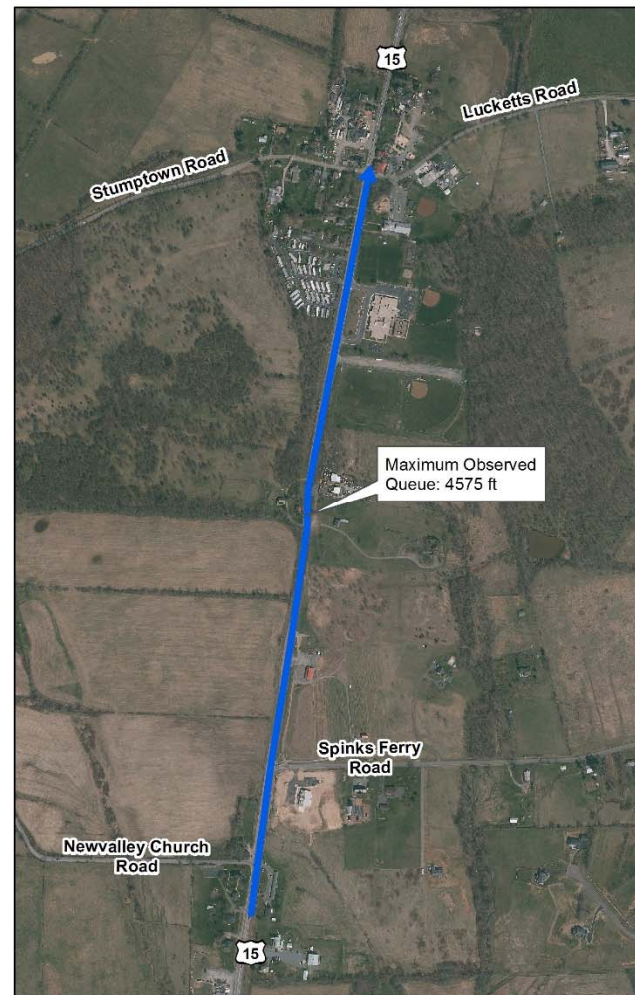
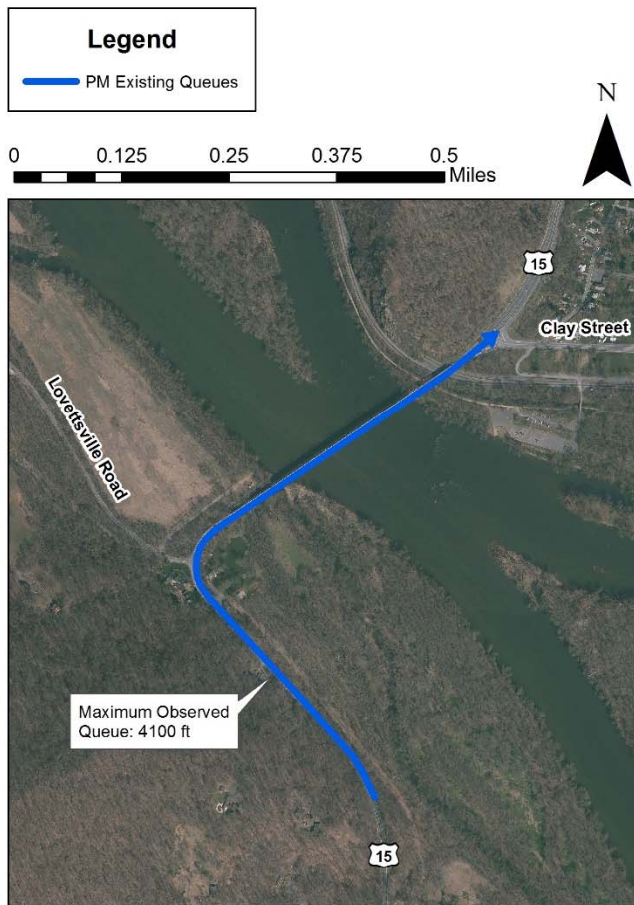


**Maximum Queues: US Route 15
Corridor Existing Conditions**

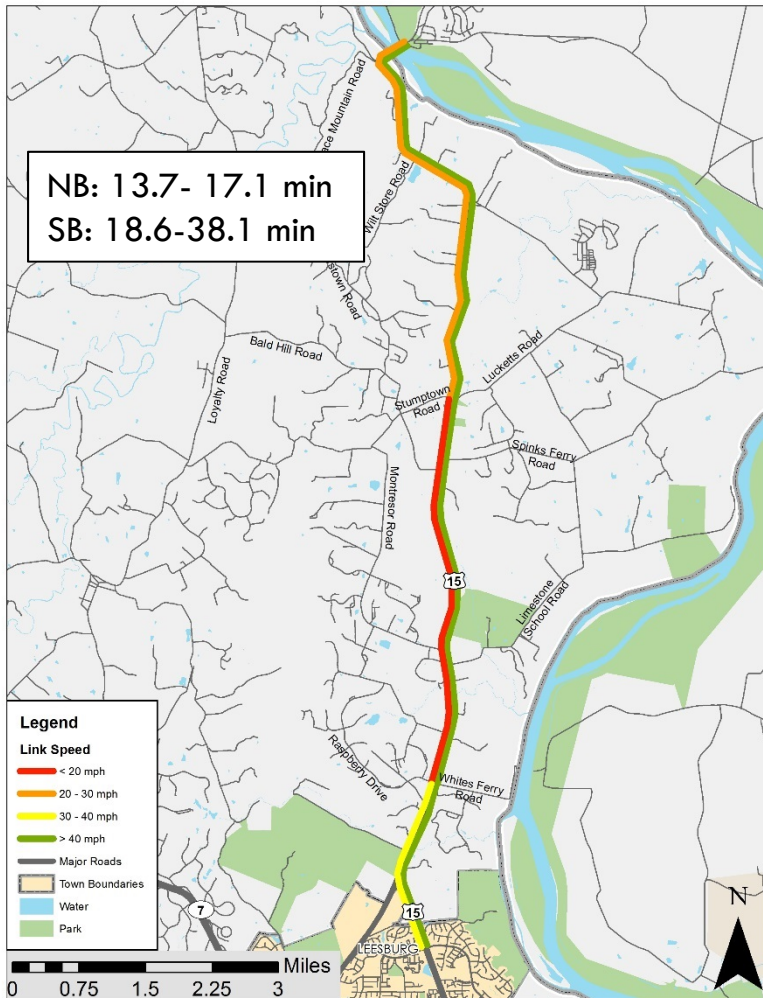


AM Peak Hour

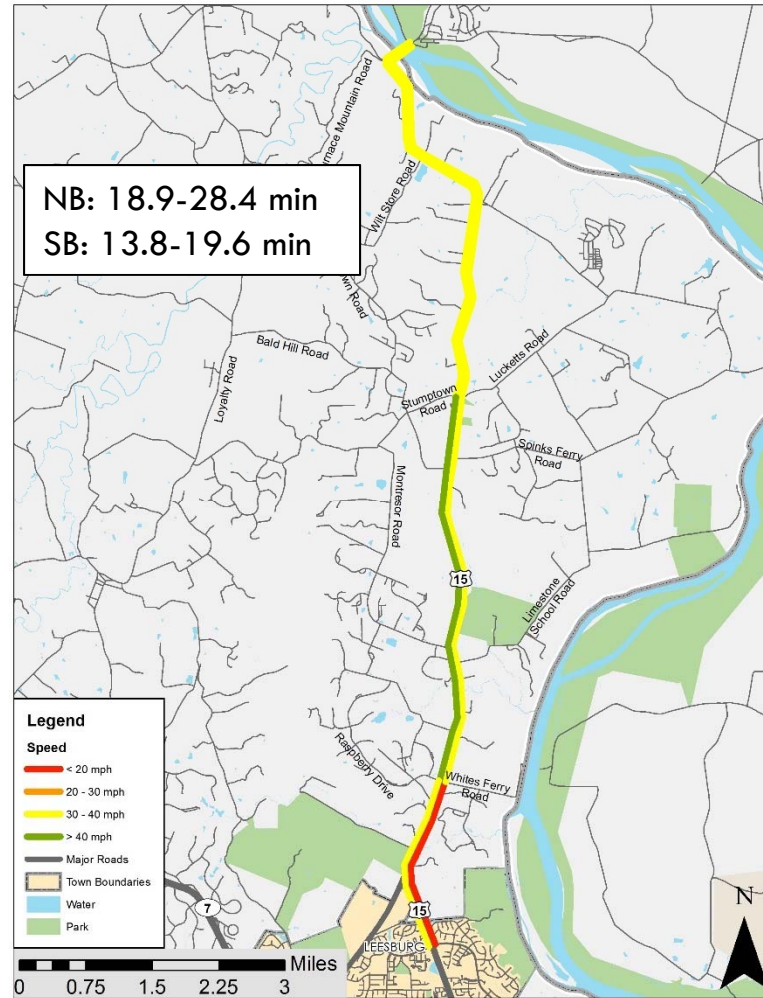
Maximum Queues: US Route 15
Corridor Existing Conditions



PM Peak Hour



AM



PM

Travel Times



Safety and Operations Study – Existing Conditions

Questions?

