



# Loudoun County Sheriff's Office Eastern Loudoun Station

Quarterly Community Meeting  
July 26, 2016  
7-8pm



# Meeting Agenda



- Welcome
- ELS Crime Statistics
- Online Reporting Statistics
- Station Operations
  - Sgt. Cunningham
  - CR Units
- Property Crimes Update
  - Detective Jeffers
  - Detective Ortutay
- Criminal Investigations Division
- Informational Items
- Contact Information



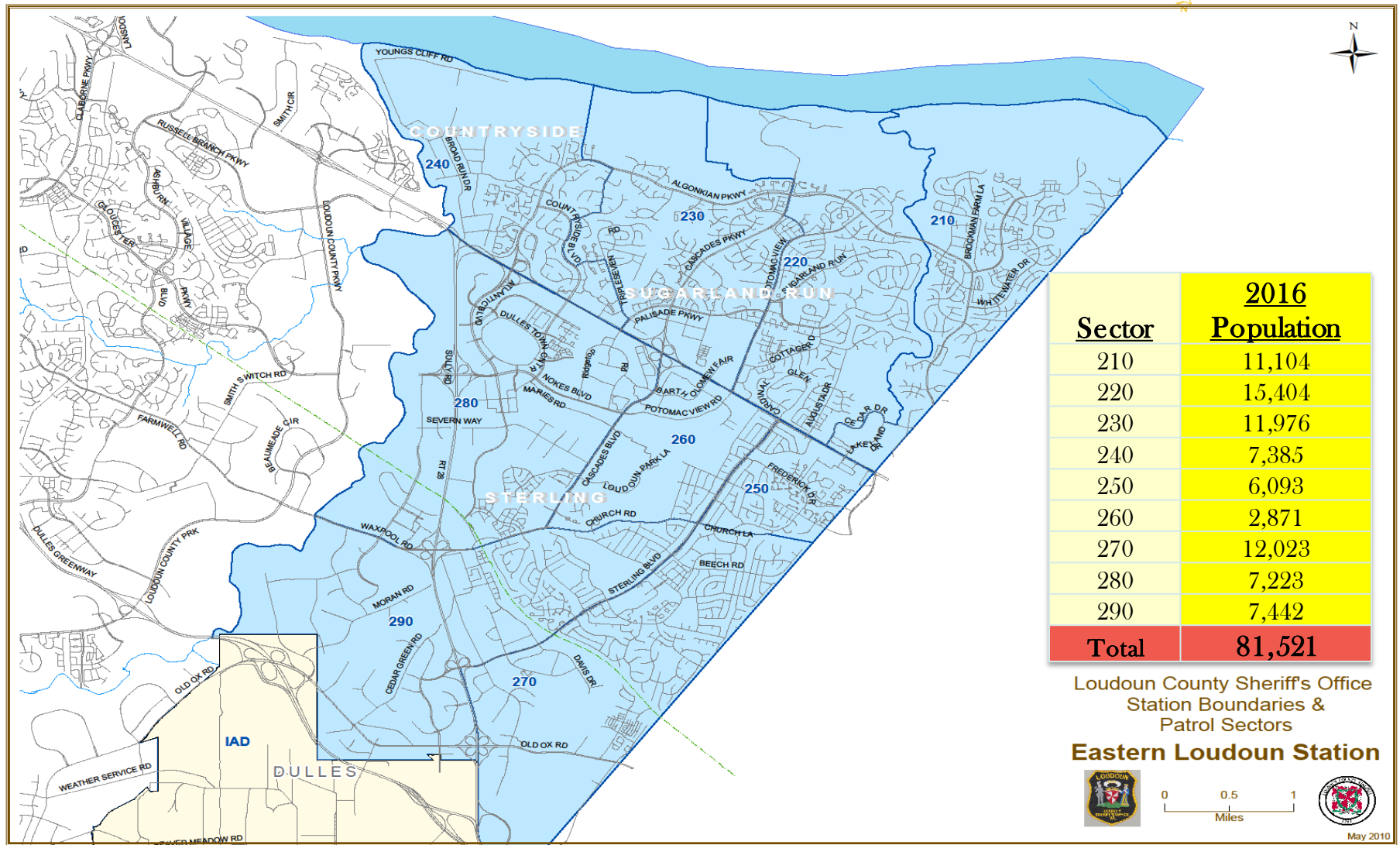


# Eastern Loudoun Station Sections





# Eastern Loudoun Station Areas of Responsibility and Patrol Sectors





# Eastern Loudoun Station Crime Statistics



## PART 1 CRIME QUARTERLY STATS

CRIME TYPE	JAN-MAR 2016	APR-JUN 2016	CHANGE	%	APR-JUN 2015	APR-JUN 2016	CHANGE	%
Homicide	0	0	0	0%	0	0	0	0%
Rape	1	6	5	500%	1	6	5	500%
Robbery	4	4	0	0%	5	4	-1	-20%
Aggravated Assault	12	15	3	25%	15	15	0	0%
Burglary	14	11	-3	-21%	19	11	-8	-42%
Auto Theft	5	8	3	60%	17	8	-9	-53%
Larceny	273	249	-24	-9%	248	249	1	0%
TOTAL	309	293	-16	-5%	305	293	-12	-4%





# Eastern Loudoun Station Crime Statistics



## PART 2 CRIME QUARTERLY STATS

CRIME TYPE	JAN-MAR 2016	APR-JUN 2016	CHANGE	%	APR-JUN 2015	APR-JUN 2016	CHANGE	%
Simple Assault	100	126	26	26%	112	126	14	13%
Destruction of Property	100	92	-8	-8%	105	92	-13	-12%
DUI	38	44	6	16%	44	44	0	0%
Drunk in Public	49	41	-8	-16%	51	41	-10	-20%
Sex Assault	4	5	1	25%	3	5	2	67%
Disorderly Conduct	10	6	-4	-40%	5	6	1	20%
Runaway	18	15	-3	-17%	21	15	-6	-29%
Narcotics	105	110	5	5%	112	110	-2	-2%
TOTAL	424	439	15	4%	453	439	-14	-3%





# Calls For Service Statistics



## Dulles Town Center Mall/Dulles Town Crossing/Dulles Crossing Plaza

CFS TYPE	JAN-MAR 2016	APR-JUN 2016	CHANGE	%	APR-JUN 2015	APR-JUN 2016	CHANGE	%
Commercial Alarm	39	26	-13	-33%	19	26	7	37%
Destruction Of Property	3	7	4	133%	3	7	4	133%
Fraud	7	7	0	0%	5	7	2	40%
Larceny	88	100	12	14%	94	100	6	6%
Suspicious Event	6	7	1	17%	7	7	0	0%
Suspicious Person	21	12	-9	-43%	20	12	-8	-40%
Suspicious Vehicle	24	23	-1	-4%	24	23	-1	-4%
TOTAL	188	182	-6	-3%	172	182	10	6%

### Arrests

JAN-MAR 2016	APR - JUN 2016	TOTAL
27	35	62





# Calls For Service Statistics



## ELS Calls For Service YTD

CRIME TYPE	2015	2016	CHANGE	%
January	4427	4224	-203	-5%
February	4312	3936	-376	-9%
March	4854	4284	-570	-12%
April	4756	4554	-202	-4%
May	4772	4934	162	3%
June	4400	4851	451	10%
TOTAL	27521	26783	-738	-3%

## Quarterly Calls For Service

APRIL - JUNE 2016

ELS	14339
Countywide	44460
ELS% of Calls	32.25%

## Parking Tickets

APRIL - JUNE 2016

Tickets	831
Warnings	83
Total	914







# Online Reporting Statistics

## Citizens Online Police Reporting System

### Calendar Year 2016

Month	Total Reports	Hours Saved	Cost Savings
January	163	326	\$12,225
February	152	304	\$11,400
March	208	416	\$15,600
April	177	354	\$13,275
May	161	322	\$12,075
June	165	330	\$12,375
July			
August			
September			
October			
November			
December			
<b>Total</b>	<b>1026</b>	<b>2052</b>	<b>\$76,950</b>
CY 2015 Comparison *	1197	2394	\$89,775
CY 2014 Comparison *	1161	2322	\$87,075

\* CY Comparisons reflect April – June of their respective years.





# Community Resource/Station Sergeant



## Sergeant Colette Cunningham

Community Resource Deputies

Station Detectives

Dulles Town Center Deputies



571-233-0039

[Colette.Cunningham@Loudoun.gov](mailto:Colette.Cunningham@Loudoun.gov)





# Community Resource Officers

**Dep. Matthew Harvey**

Countryside, Cascades

571-465-0172

[Matthew.Harvey@Loudoun.gov](mailto:Matthew.Harvey@Loudoun.gov)



**Dep. Jamie Holben**

Sugarland, Lowes Island

571-420-0036

[Jamie.Holben@Loudoun.gov](mailto:Jamie.Holben@Loudoun.gov)

**Dep. Dawn Taylor**

Sterling

571-918-1813

[Dawn.Taylor@Loudoun.gov](mailto:Dawn.Taylor@Loudoun.gov)





# Station Operations

## Concentration Ops

Concentration Ops	
Type	#
Suspicious People	61
Suspicious Vehicle	48
Vehicle Search	15
Traffic Stop	41
Arrests	11

## Lowes Island Blvd Checkpoint 877 Vehicles

Lowes Island Blvd Checkpoint 877 Vehicles	
Type	#
Summons	12
Warnings	13
Arrests	2





# Station Detectives



**Det. Charles "Ryan" Willis**  
703-777-0486

[Charles.Willis@loudoun.gov](mailto:Charles.Willis@loudoun.gov)



**Det. Jacob Jeffers**  
571-258-3181

[Jacob.Jeffers@loudoun.gov](mailto:Jacob.Jeffers@loudoun.gov)

**Det. Roy Ortutay**  
571-246-4165

[Roy.Ortutay@Loudoun.gov](mailto:Roy.Ortutay@Loudoun.gov)

**Det. Katie Baldwin**  
571-258-3138

[Katie.Baldwin@Loudoun.gov](mailto:Katie.Baldwin@Loudoun.gov)





# Criminal Investigations Division



## Major Crimes

- Robbery/Homicide
- Juvenile/Sex Crimes
- Financial Crimes
- Tactical Enforcement Unit
- Crime Scene Unit
- Computer Forensics





# LCSO Website



## [Sheriff.Loudoun.Gov](http://sheriff.loudoun.gov)

***Website Offers Innovative & Interactive Features in a More User Friendly Layout***

- **Report a Crime Online**
  - ✓ Report Certain Crimes Like Larceny, ID Theft & Vandalism via the Internet.
- **Community Resource Directory**
  - ✓ Search Community Resources for Health & Human Services in Loudoun County.
- **Case Follow-Up**
  - ✓ Victim's can Follow-up & Inquire on Status of Case via the Website.
- **Find My Station**
  - ✓ A Searchable Map allowing Residents to find their nearest Station providing
  - ✓ Services such as Fingerprinting & Background Checks.



- **Traffic Incident Mapping Using Online Mapping Resources**







# LCSO ONLINE REPORTING

## WWW.SHERIFF.LOUDOUN.GOV



ALERT LOUDOUN



FIND MY STATION



CRIME MAPS & STATS



Report a Crime Online FAQ's ▶

[Home](#) > Report A Crime

## Loudoun Sheriff's Office Online Crime Reporting System

### Report a Crime Online

Welcome to the Loudoun County Sheriff's Office Citizens Online Police Reporting System. **If this is an Emergency or a crime is in progress/just occurred, please call 911.** Using this online citizen crime reporting system allows you to submit a report without leaving your home; however, not every crime can be reported. Please confirm the following to find out if online citizen crime reporting is right for you:

- This is not an emergency?
- This incident occurred within Loudoun County?
- This is not a motor vehicle crash or hit and run?

If you answered yes to all of the above questions, you are ready to file your report online. Please make sure to turn off your pop-up blocking software before filing the report. If you answered no to any of the questions, please look at our [Online Crime Reporting Frequently Asked Questions](#) section. Upon completion of this report process you will:

- See the words: "Your online police report has been submitted" showing that your report is complete.
- Be given a temporary report number.
- Be able to print a copy of the temporary report to keep for your records.

#### Please Note:

- All cases filed using the Citizen's Online Crime Reporting System will be reviewed.
- Upon review, if further investigation of your case is needed, you may be contacted.
- **Filing a false police report is a CRIME.**

Anyone found to have submitted a false police report will be prosecuted under the authority of Virginia State Code §18.2-461, which shall be punishable as a Class 1 misdemeanor. Maximum possible penalty is one year in jail and/or \$2,500 fine. The Loudoun County Sheriff's Office Citizen's Online Crime Reporting System accepts the following types of incidents:

- |                           |                         |                                  |
|---------------------------|-------------------------|----------------------------------|
| — Alcohol Violations      | — Civil Disputes        | — Credit Card Fraud              |
| — Destruction of Property | — Fraud/False Pretenses | — Harassing Calls/Emails         |
| — Identity Theft          | — Theft                 | — Theft From Vehicle             |
| — Lost Property           | — Narcotics Activity    | — Suspicious Event/Circumstances |

[Please Click Here to Start Your Online Report](#)

[Please click here for Traffic Complaints](#)

[Please click here for Agency Questions or Concerns](#)

Incident Type	Definition	Examples
Alcohol Violation	When alcohol is consumed by a person under the age of 21, sold to a person under the age of 21 or purchased for a person under the age of 21.	Underage parties where persons less than 21 are consuming alcohol, locations where it is believed persons less than 21 are being sold alcohol or where persons are suspected of purchasing alcohol for those less than 21 years of age.
Civil Dispute	A disagreement between people or groups in which no criminal laws are broken.	Child custody disputes, neighbor disputes, common property disputes, etc.
Credit Card Fraud	Occurs when the credit card or credit card number(s) are used fraudulently without the consent of the cardholder.	Your wallet is lost or stolen and purchases are made on your credit card without your consent. An unauthorized purchase appears on your credit card statement from an online retailer.
Credit Card Theft	Taking or obtaining of credit card(s), or credit card number(s), with the intent to use them fraudulently.	Your credit card is stolen from your person or your credit card number is stolen by an unknown person.
Destruction of Property/Vandalism	The act of changing, modifying, defacing public or private property.	A vehicle was damaged on the exterior, but no parts were removed or entry was made into the vehicle.
Fraud/False Pretense	Fraudulently obtaining or selling goods and services.	Construction work intentionally undone. False internet products or returns. Non-delivery of tickets.
Harassing Phone Calls/Emails	Unwanted phone calls or e-mail of an annoying, harassing nature.	Immediate phone hang-ups, obscene language, etc. with no known suspects.
Identity Theft	Obtaining another's personal identifying information and using it to obtain credit, goods or services.	Someone obtains a credit card using your Social Security Number or obtains phone service using your personal information.
Larceny/Theft	Your property is taken without your permission.	Someone takes your cellular phone without permission. Lost property is not a theft.
Lost Property	Property is missing or lost.	This is not theft of property. Does not include lost passports, social security cards or driver's licenses.
Narcotics Activity	Suspected narcotics activity.	Includes suspected sales of narcotics, traffic indicating the sale of narcotics, consumption of illegal narcotics.
Shoplifting	Property is taken from a business without paying.	Someone steals consumable product from a business and leaves without paying. This includes concealment.
Suspicious Event/Circumstance	Suspicious activity that you wish for the Sheriff's Office to know about, but is not necessarily a crime.	Someone you do not know hangs out on your street corner for several hours every afternoon. Cars that you do not recognize are parked in front of your home and then leave at all hours of the night. Your neighbor has frequent visitors that only stay for a couple of minutes at a time.







# Sheriff's Office Technology



## *Alert Loudoun 2.0*

Information You Need Wherever You Are

Emergency Alerts, Traffic, Weather, County News

[www.loudoun.gov/alert](http://www.loudoun.gov/alert)



- Follow Loudoun County on Facebook-  
[www.facebook.com/loudounsheriff](http://www.facebook.com/loudounsheriff)
- Follow Loudoun County on Twitter-  
[www.twitter.com/loudounsheriff](http://www.twitter.com/loudounsheriff)
- Follow us on Instagram-  
[www.instagram.com/loudounsheriff](http://www.instagram.com/loudounsheriff)
- Follow Loudoun County Traffic Incident Activity-  
[www.sheriff.loudoun.gov/traffic](http://www.sheriff.loudoun.gov/traffic)
- Mobile Sheriff's Office App





# Loudoun County Sheriff's Office App



## Put Crime Information at Your Fingertips

- Submit Crime Tips
- Report a Crime
- Make a Traffic Complaint
- Provide Citizen Feedback
- Learn the Latest Public Safety News
- Review Current Traffic Incidents Dispatched by the LCSO
- Receive Non-Emergency Community Notifications
- Learn of Upcoming Meetings & Events Held by the LCSO





# REMINDERS

- DO NOT LEAVE ANY VALUABLES IN YOUR VEHICLE
- LOCK YOUR VEHICLE DOORS IN YOUR DRIVEWAY
- CLOSE/LOCK RESIDENTIAL GARAGES AND DOORS.
- **REPORT SUSPICIOUS ACTIVITY**- PROVIDE CLOTHING DESCRIPTION, VEHICLE DESCRIPTION, DIRECTION OF TRAVEL AND WHAT YOU WITNESSED.
- AT DUSK WALK OR RUN WITH ANOTHER PERSON AND/OR CARRY CELLPHONE.





# Contact Information

## Captain Gregory Brown

Station Commander

571-258-3142

[Greg.Brown@loudoun.gov](mailto:Greg.Brown@loudoun.gov)



## 1<sup>st</sup> Lieutenant David Hibberd

Assistant Station Commander

703-771-5007

[David.Hibberd@loudoun.gov](mailto:David.Hibberd@loudoun.gov)

## Non Emergency – 703-777-1021

- Traffic Hotline – 703-771-5798
- Narcotics Tip Line – 703-779-0552
- Crime Solvers – 703-777-1919

## Thank you for your continued support!

