



Loudoun County Sheriff's Office Eastern Loudoun Station

Quarterly Community Meeting
April 27, 2017
7-8pm



Meeting Agenda



- Welcome
- Sheriff Chapman
- Drug Awareness
- Captain Hines
 - ELS Organization Chart
- Sgt. Rogers Station Operations
 - CR Unit Update
 - Property Crimes Update
 - Scams/Tax Identity Theft
- Captain Hines
 - Move Over Virginia
 - Informational Items
- Contact Information





Sheriff Michael L. Chapman





Drug Awareness

Detective Mike Safford





National Prescription Drug Take Back Day



DRUG ENFORCEMENT ADMINISTRATION

National Prescription Drug **TAKE BACK DAY**

**Saturday, April 29th,
10 a.m. – 2 p.m.**

**Turn in your unused or expired
prescription medication
for safe disposal**



Visit www.dea.gov or call 800-882-9539
for a collection site near you

Eastern Loudoun Sheriff's Station
46620 East Frederick Drive, Sterling

Dulles South Public Safety Center
25216 Loudoun County Parkway, South
Riding

Lansdowne Public Safety Center
19845 Sandridge Way, Lansdowne

Lovettsville Fire Station
12837 Berlin Turnpike, Lovettsville

Middleburg Police Department
10 W. Marshall Street, Middleburg

Fireman's Field
205 S. Nursery Avenue, Purcellville





LCSO Medication Disposal Box

UNUSED OR EXPIRED MEDICATION

YOU MAY DROP OFF:

- ❖ Prescription Medications
- ❖ Prescription Patches
- ❖ Over the Counter Medications
- ❖ Vitamins
- ❖ Sample Medications
- ❖ Medications for Pets

THE FOLLOWING ARE NOT ACCEPTED:

- ❖ Needles (Sharps)
- ❖ Liquid Medications
- ❖ Aerosol Containers
- ❖ Inhalers
- ❖ Ointments and Lotions
- ❖ Medications from Businesses



Eastern Loudoun Sheriff's Station
46620 East Frederick Drive,
Sterling

Dulles South Public Safety Center
25216 Loudoun County Parkway,
South Riding

University Sheriff's Station
45299 Research Pl, Ashburn

Western Loudoun Station
47 W. Loudoun St, Roundhill

Monday – Friday
8:30am – 5:00pm





Eastern Loudoun Station Sections





Loudoun County Sheriff's Office Station Populations



Eastern Loudoun Station

Population: *81,521*

University Station

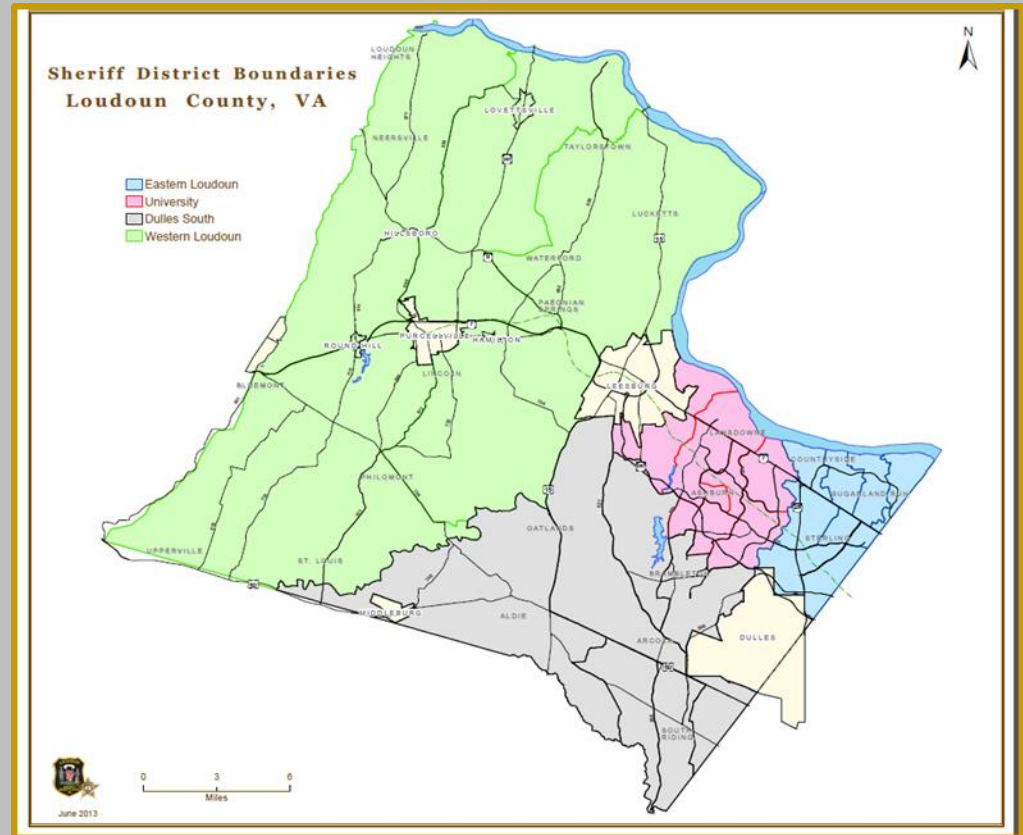
Population: *92,741*

Western Loudoun Station

Population: *51,191*

Dulles South Station

Population: *103,720*

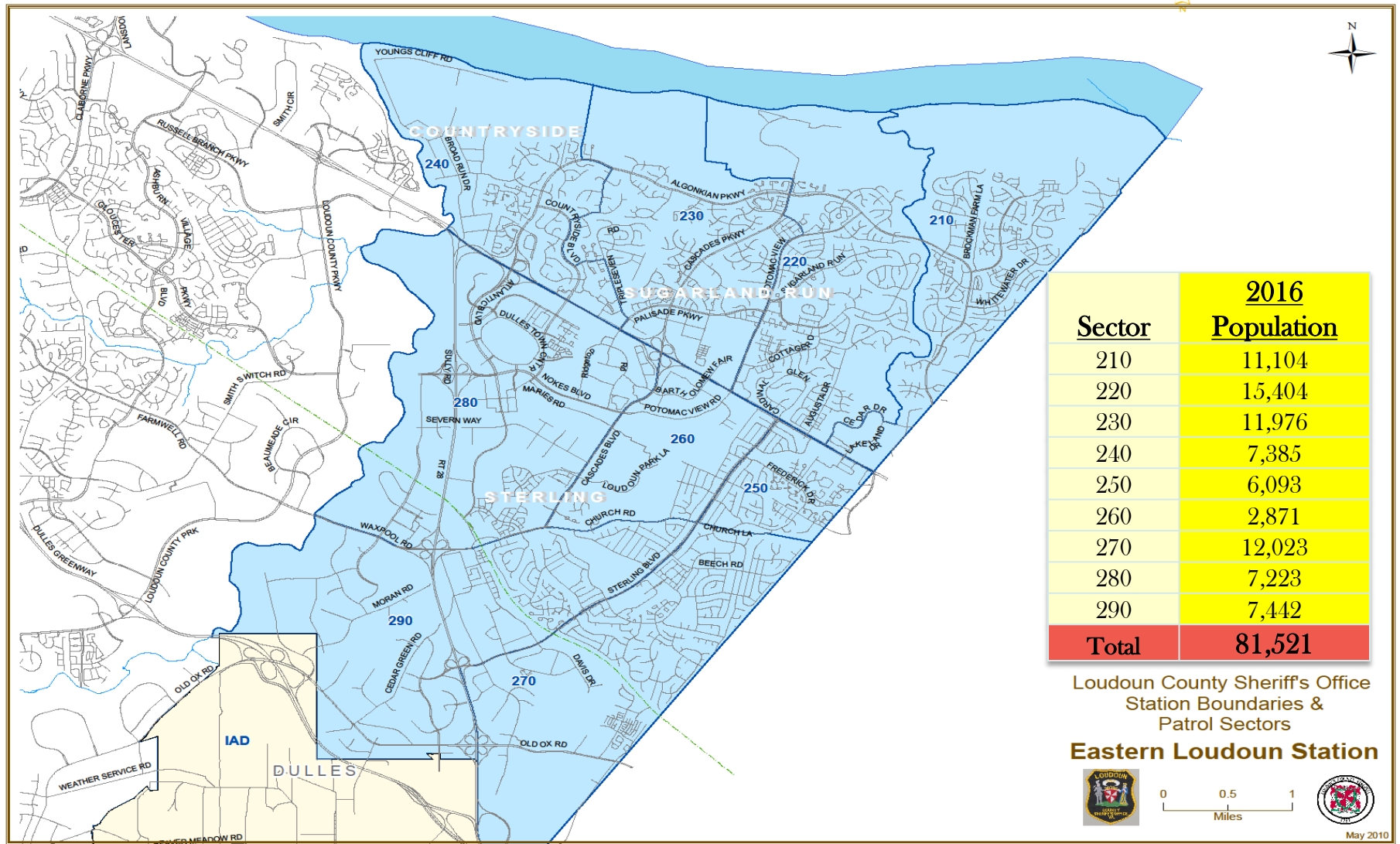


** 2016 Loudoun County Department of Planning and Zoning **





Eastern Loudoun Station Areas of Responsibility and Patrol Sectors





Calls For Service Statistics



ELS Calls For Service YTD				
	2016	2017	CHANGE	%
January	4224	4558	334	8%
February	3936	4393	457	12%
March	4284	4845	561	13%
TOTAL	12444	13796	1352	11%

Quarterly Calls For Service	
JANUARY - MARCH 2017	
ELS	13796
Countywide	47352
ELS% of Calls	29.13%

Parking Tickets
JANUARY - MARCH 2017
765





Community Resource/Station Sergeant

Sergeant Greg Rogers

Community Resource Deputies

Station Detectives

Dulles Town Center Deputies

703-777-0488

Gregory.Rogers@Loudoun.gov





Community Resource Officers



Dep. Matthew Harvey
Countryside, Cascades
571-465-0172

Matthew.Harvey@Loudoun.gov

Dep. Jamie Holben
Sugarland, Lowes Island
571-420-0036

Jamie.Holben@Loudoun.gov

Dep. Dawn Taylor
Sterling
571-918-1813

Dawn.Taylor@Loudoun.gov





Station Detectives



Det. Charles "Ryan" Willis

703-777-0486

Charles.Willis@loudoun.gov

Det. Roy Ortutay

571-246-4165

Roy.Ortutay@Loudoun.gov

Det. Katie Baldwin

571-258-3138

Katie.Baldwin@Loudoun.gov





Burglary & Auto Thefts





Scams



Recent Increase in Intimidation/Extortion Scams

The Grandparent: Relative in Legal/financial/medical crisis. More recently residents have received calls that their daughter was kidnapped...

IRS: Need to pay fines due to back taxes owed. In some cases caller claims you will be arrested if you do not pay fines...

Process Server: Asks for “court” payments, caller often claims to be with a local law enforcement agency and threatens arrest...

Payday Loans: Calls about delinquent payments.
May advise of warrants for non-payment.





Tax Identity Theft



Did Someone Use Your Social Security Number to File Taxes?

Go to identitytheft.gov to report the crime and get a recovery plan.

Spot Identity Theft Early!

Call all three credit reporting company's at annualcreditreport.com

- Separate Reports
- Fraud Alert (90 days)
- Credit Freeze



*If you have been the victim of a scam,
call the Loudoun County Sheriff's Office at 703-777-1021*





Move Over Virginia



June is Move Over Awareness Month

The Move-Over/Slow Down law, Section § 46.2-921.1 of the Code of Virginia, requires drivers to move-over one lane, if possible, whenever approaching a stationary vehicle that is displaying a flashing, blinking, or alternating blue, red, or amber light. And, if traffic is too congested to move-over safely, the law requires drivers to simply slow down, below the posted speed limit and be prepared to stop.



#MoveOverVA





LCSO Website



Sheriff.Loudoun.Gov

Website Offers Innovative & Interactive Features in a More User Friendly Layout

- Report a Crime Online
 - ✓ Report Certain Crimes Like Larceny, ID Theft & Vandalism via the Internet.
- Community Resource Directory
 - ✓ Search Community Resources for Health & Human Services in Loudoun County.
- Case Follow-Up
 - ✓ Victim's can Follow-up & Inquire on Status of Case via the Website.
- Find My Station
 - ✓ A Searchable Map allowing Residents to find their nearest Station providing
 - ✓ Services such as Fingerprinting & Background Checks.



- Traffic Incident Mapping Using Online Mapping Resources



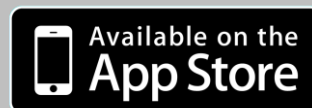


Loudoun County Sheriff's Office App



Put Crime Information at Your Fingertips

- Submit Crime Tips
- Report a Crime
- Make a Traffic Complaint
- Provide Citizen Feedback
- Learn the Latest Public Safety News
- Review Current Traffic Incidents Dispatched by the LCSO
- Receive Non-Emergency Community Notifications
- Learn of Upcoming Meetings & Events Held by the LCSO







LCSO Online Reporting

Sheriff.Loudoun.Gov






LOUDOUN COUNTY SHERIFF'S OFFICE



[REPORT A CRIME](#) [CITIZEN FEEDBACK](#) [VICTIM SERVICES](#) [CAREERS](#) [OFFICE LOCATIONS](#) [SERVICES & PROGRAMS](#)



Loudoun County Sheriff
Michael L. Chapman ([Bio](#))
[email](#)

Emergency: Dial 911
Non-emergency: 703-777-1021

Administrative Office:
703-777-0407
323 Spoutin Road SE,
Leesburg, VA 20175

Mailing Address:
Loudoun County Sheriff's Office
P.O. Box 7200
Leesburg, VA 20177-7200

Hours
Monday - Friday
8:30 am - 5:00 pm

Contact a Recruiter
703-777-LCSO (5276)
703-775-0552

Narcotics Tip Line
703-775-0552

Loudoun County Crime Solvers
703-777-1919

Divisions

Cold Case Initiative

Forms


Media Relations

Mission Statement

Public Service Announcements

Special Events Planning

Traffic Incident Map



Mission Statement:
The Loudoun County Sheriff's Office will strive to continuously improve safety and law enforcement services to all members of our community through the Step Up Strategy of improved service, technology, efficiency and professionalism.


We will work interactively with federal, state, and other local law enforcement authorities to vigorously and fairly enforce criminal laws by sharing capabilities, strategies and assets. We will partner with community services groups and human services agencies to implement strategies that improve the quality of life for County residents, businesses and visitors. Finally we will engage our community through courteous and proactive outreach and communication, and work diligently to constantly improve our professionalism.

Every member of the Loudoun County Sheriff's Office is expected to contribute to the furtherance of this mission.

Project Spotlight

Report A Crime Online

Report A Crime Online
An Online Citizen Crime Reporting System.



Compliments Corner

ALERT LOUDOUN

FIND MY STATION

CRIME MAPS & STATS

Department News

Teacher Charged with DUI, Possession of Alcohol at Sterling Middle School
A Loudoun County teacher was arrested today for DUI and having an open container of alcohol inside the school. [Read on...](#)

LC SO Seeks Whereabouts of Missing Teenager Last Seen in Leesburg Area
The Loudoun County Sheriff's Office is asking for the public's assistance to help locate a missing teenager from the Leesburg, Virginia area. [Read on...](#)

[VIEW ALL](#)

Calendar

Tue, Apr. 26
University Station Quarterly Meeting

Thu, Apr. 27
Eastern Loudoun Station Quarterly Meeting

Wed, May 3
Western Loudoun Station Quarterly Meeting

[VIEW ALL](#)

Incident Type	Definition	Examples
Alcohol Violation	When alcohol is consumed by a person under the age of 21, sold to a person under the age of 21 or purchased for a person under the age of 21.	Underage parties where persons less than 21 are consuming alcohol, locations where it is believed persons less than 21 are being sold alcohol or where persons are suspected of purchasing alcohol for those less than 21 years of age.
Civil Dispute	A disagreement between people or groups in which no criminal laws are broken.	Child custody disputes, neighbor disputes, common property disputes, etc.
Credit Card Fraud	Occurs when the credit card or credit card number(s) are used fraudulently without the consent of the cardholder.	Your wallet is lost or stolen and purchases are made on your credit card without your consent. An unauthorized purchase appears on your credit card statement from an online retailer.
Credit Card Theft	Taking or obtaining of credit card(s), or credit card number(s), with the intent to use them fraudulently.	Your credit card is stolen from your person or your credit card number is stolen by an unknown person.
Destruction of Property/Vandalism	The act of changing, modifying defacing public or private property.	A vehicle was damaged on the exterior, but no parts were removed or entry was made into the vehicle.
Fraud/False Pretense	Fraudulently obtaining or selling goods and services.	Construction work intentionally undone. False internet products or returns. Non-delivery of tickets.
Harassing Phone Calls/Emails	Unwanted phone calls or e-mail of an annoying, harassing nature.	Immediate phone hang-ups, obscene language, etc. with no known suspects.
Identity Theft	Obtaining another's personal identifying information and using it to obtain credit, goods or services.	Someone obtains a credit card using your Social Security Number or obtains phone service using your personal information.
Larceny/Theft	Your property is taken without your permission.	Someone takes your cellular phone without permission. Lost property is not a theft.
Lost Property	Property is missing or lost.	This is not theft of property. Does not include lost passports, social security cards or driver's licenses.
Narcotics Activity	Suspected narcotics activity.	Includes suspected sales of narcotics, traffic indicating the sale of narcotics, consumption of illegal narcotics.
Shoplifting	Property is taken from a business without paying.	Someone steals consumable product from a business and leaves without paying. This includes concealment.
Suspicious Event/Circumstance	Suspicious activity that you wish for the Sheriff's Office to know about, but is not necessarily a crime.	Someone you do not know hangs out on your street corner for several hours every afternoon. Cars that you do not recognize are parked in front of your home and then leave at all hours of the night. Your neighbor has frequent visitors that only stay for a couple of minutes at a time.
Theft From a Building	Property is taken from a building.	Someone takes property from a building such as a home or business. This cannot be a burglary or shoplifting.
Theft From a Vehicle	Property is stolen from a motor vehicle.	Stolen equipment or belongings from a vehicle.
Theft of Vehicle Parts/Accessories	Auto parts attached to a vehicle are stolen.	Types of equipment attached to a vehicle include tires, engine parts, headlights, etc.

<http://sheriff.loudoun.gov>

Loudoun County Sheriff's Office, VA



Online Reporting Statistics

Citizens Online Police Reporting System

Calendar Year 2016

	Reports Taken	Hours Saved	Cost Savings
January	185	370	\$13,875
February	189	378	\$14,175
March	227	454	\$17,025
April			
May			
June			
July			
August			
September			
October			
November			
December			
Total	601	1202	\$45,075
CY 2016 Comparison *	523	1046	\$39,225
CY 2015 Comparison *	578	1156	\$43,350

* CY Comparisons reflect Jan – March of their respective years.





Sheriff's Office Technology



- Community Emergency Voice notifications
- Traffic alerts
- Weather alerts

www.loudoun.gov/alert

LCSO Traffic Incident Map

sheriff.loudoun.gov/traffic



- Search reported crimes in an area by address

www.crimereports.com



- Emergency alerts from your local governments in the National Capital Region

www.capitalert.gov

LCSO Social Media



Like us on Facebook



Follow us on Twitter



Follow us on Instagram



Subscribe to us on YouTube





CALL if You Can

TEXT 911

TEXT if You Can't



Available in all of Loudoun County and its incorporated towns.

If you are deaf, hard of hearing, or have a speech disability.

If you cannot speak due to injury or medical condition.



If you are in a threatening situation.

If your mobile reception signal is poor.

HOW TO TEXT TO 911:

- Enter only 911 in the “To” field.
- Text should be short and include:
 - Location
 - Type of Emergency
- Be prepared to answer questions and follow Call Taker’s instructions.
- Photos and videos cannot be sent to 911.
 - Texts to 911 cannot include more than 1 recipient.
 - TEXT 911 is available for:
 - FIRE
 - MEDICAL
 - POLICE





my.VDOT.Virginia.gov

Virginia.gov Agencies Governor Search: Virginia.gov

VDOT Virginia Department of Transportation myVDOT Sign In or Register

Go to www.virginiadot.org

Need Location Details Contact

How can we help you?

- ☐ I need a road repaired
- ☐ I need something removed from a road
- ☐ I need signs, signals, or guardrail repaired
- ☐ I need new signs or traffic devices installed
- ☐ I have a question or need information
- ☐ I want to submit a claim (includes mailbox damage)

Note: VDOT does not maintain roads in cities, towns, or in Henrico and Arlington counties, except for interstates and major primary roads. Please submit a separate report for each request. If your request is related to a road hazard that needs immediate attention, please call 1-800-367-7623 (FOR-ROAD). For emergencies, please dial 911.

Continue >

Check service request status

What's your service request number?

Check your status

Traffic Information

511 offers real-time traffic info. Anytime you need it, anywhere you are.

Popular Links

- Business Center
- High Occupancy Vehicle (HOV) Systems
- Current Opportunities
- Consider a Career at VDOT
- Manuals, Guides and Instructional & Informational Memoranda
- Current Opportunities
- Design-Build Proposal Submittals and Rankings
- High Occupancy Vehicle (HOV) Lanes - Rules and FAQs

Northern Virginia District Office
14685 Avion Parkway
Chantilly, Virginia 20151
703-383-2000
www.VirginiaDOT.org

Work Requests

Just submit a [work request](#) or
call 800-367-ROAD (7623)

Questions? Comments? - Google Chrome

www.virginiadot.org/info/feedbackform.asp

Search this site

Traffic Information

511 offers real-time traffic info. Anytime you need it, anywhere you are.

SMART SCALE Dashboard

Funding the right transportation projects.

SMART SCALE DASHBOARD

Virginia Roads

Your one-stop source for VDOT maps, data and project info.

VIRGINIA ROADS

Connect With Us!

Visit Our Social Media Pages

Congratulate to VDOT's Tech Bruce Satterwhite, who won a Tech of the Year award from Q&AUP_CIRC maps in 2010/2011.

9 hours ago

Questions? Comments?

Use this form!

If you have questions or comments for the Virginia Department of Transportation, please use this form and someone will respond as soon as possible.

To report a road problem or request maintenance work, use the myVDOT Portal or call 800-FOR-ROAD (800-367-7623).

Name:

E-mail address:

Confirm e-mail address:

Email subject:

City or county:

Comments:

E^WB

Before submitting this form, please type the characters displayed above:

Submit Comment | Reset Form

Required.





REMINDERS



- Do not leave any valuables in your vehicle
- Lock your vehicle doors in your driveway
- Close/lock residential garages and doors.
- **Report suspicious activity**- provide clothing description, vehicle description, direction of travel and what you witnessed.
- At dusk walk or run with another person and/or carry cellphone.





Contact Information



Captain Chris Hines

Station Commander

703-771-5202

Christopher.Hines@loudoun.gov



1st Lt. Dave Hibberd

Assistant Station Commander

703-771-5007

David.Hibberd@Loudoun.gov

Non Emergency – 703-777-1021

- Traffic Hotline – 703-771-5798
- Narcotics Tip Line – 703-779-0552
- Crime Solvers – 703-777-1919

Thank you for your continued support!

