



Loudoun County Sheriff's Office Eastern Loudoun Station

Quarterly Community Meeting
February 21, 2018
7-8pm



Meeting Agenda



- Welcome
- Sheriff Chapman
- Captain DeLitta
 - ELS Organization Chart
- Sgt. Johnson - Station Operations
 - Property Crimes Update
 - CR Unit Update
- Captain DeLitta
 - Informational Items
- Contact Information





Eastern Loudoun Station Quarterly Meeting



Sheriff Michael L. Chapman





Loudoun County Sheriff's Office Station Populations



Eastern Loudoun Station

Population: 81,899, 26.8 sq. mi
(People per sq. mi: 3,058)

University Station

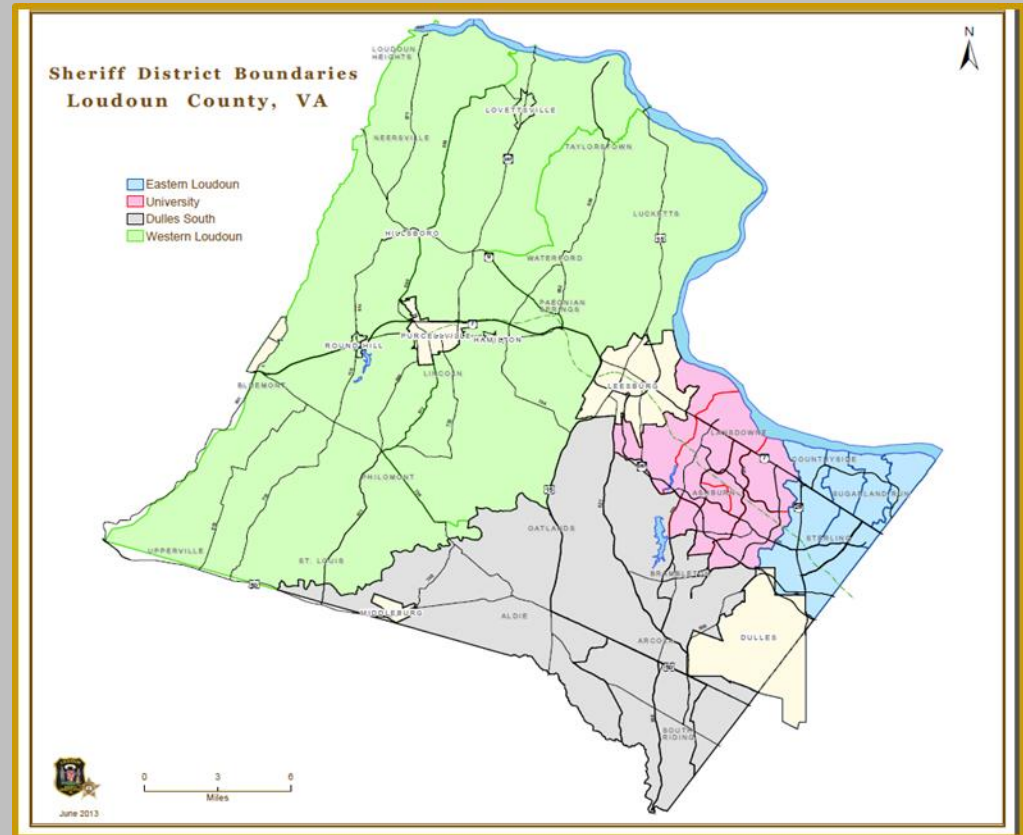
Population: 94,209, 35.5 sq. mi
(People per sq. mi: 2,653)

Western Loudoun Station

Population: 52,430, 315.3 sq. mi
(People per sq. mi: 166)
Includes the Town of Purcellville

Dulles South Station

Population: 109,856, 116.0 sq. mi
(People per sq. mi: 947)

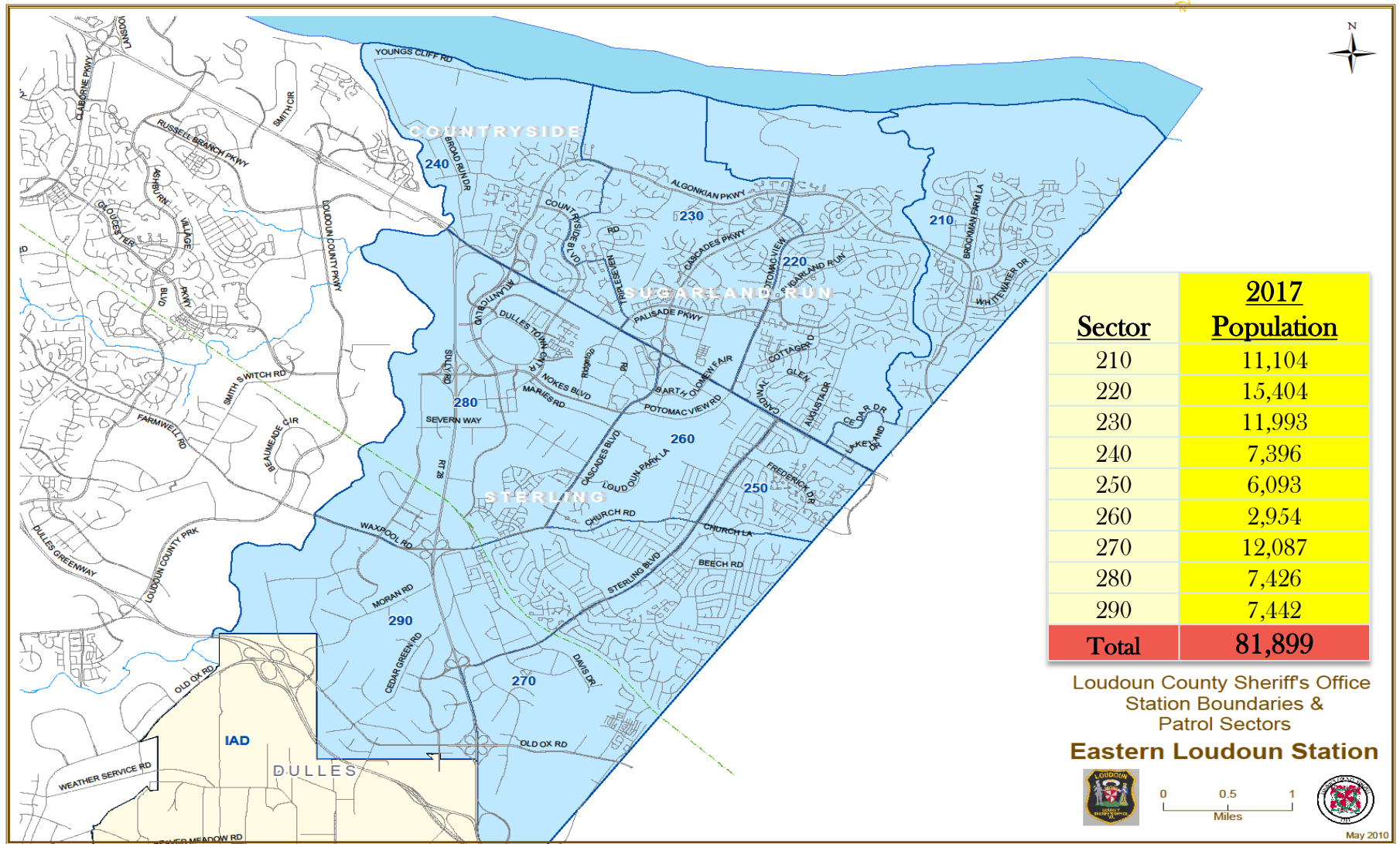


** 2017 Loudoun County Department of Planning and Zoning **





Eastern Loudoun Station Areas of Responsibility and Patrol Sectors





Eastern Loudoun Station Sections





Calls For Service Statistics



ELS Calls For Service YTD

	2016	2017	CHANGE	%
January	4224	4558	334	8%
February	3936	4393	457	12%
March	4284	4845	561	13%
April	4554	4796	242	5%
May	4934	4989	55	1%
June	4851	5034	183	4%
July	4831	5274	443	9%
August	4194	5269	1075	26%
September	4436	4992	556	13%
October	4687	5373	686	15%
November	4143	4967	824	20%
December	4536	5146	610	13%
TOTAL	53610	59636	6026	11%

Quarterly Calls For Service

October - December 2017

ELS	15486
Countywide	50331
ELS% of Calls	30.77%

Parking Tickets 2017

Jan - Mar	765
Apr - June	842
July - Sept	751
Oct - Dec	626
TOTAL	2,984

Sterling Population: 81,899





Online Reporting Statistics



Citizens Online Police Reporting System

Calendar Year 2017

	Reports Taken	Hours Saved	Cost Savings
January	185	370	\$13,875
February	189	378	\$14,175
March	227	454	\$17,025
April	162	324	\$12,150
May	169	338	\$12,675
June	193	386	\$14,475
July	162	324	\$12,150
August	207	414	\$15,525
September	198	396	\$14,850
October	208	416	\$15,600
November	187	374	\$14,025
December	205	410	\$15,375
Total	2292	4584	\$171,900
CY 2016 Comparison	2170	4340	\$162,750
CY 2015 Comparison	226	4532	\$169,950





Community Resource/Station Sergeant

Sergeant Greg Johnson



Community Resource Deputies
Station Detectives
Dulles Town Center Deputies
703-777-0488

Greg.Johnson@Loudoun.gov





Station Detectives



Det. Roy Ortutay

571-246-4165

Roy.Ortutay@Loudoun.gov

Det. Katie Mitchell

571-258-3138

Katie.Mitchell@Loudoun.gov





Station Detectives



Robert M. Williams-Dixon, 33, of no fixed address, was arrested November 20 on 26 charges connecting him to eleven burglaries in the Eastern Loudoun area. Williams-Dixon is facing 11 counts of burglary, 11 counts of grand larceny, two counts of credit card larceny and two counts of credit card fraud.

All of the burglaries in Loudoun County were located in the Sterling area north of Route 7. In most of the cases the suspect entered the homes while the residents were asleep inside. It is believed he gained entry through an exterior garage door by using a garage door opener from unlocked cars parked in a driveway and then entered the home through an unlocked interior garage door.





#9PMRoutine



- Lock personal vehicles
- Secure valuables in vehicle trunk
- Close/Lock residential garages and doors
- Safely secure all firearms ** Not in Vehicles **
- LCSO Non-Emergency Number (703)777-1021
- Please share the #9PMRoutine with your community to help prevent property crimes in your neighborhood!!





Community Resource Officers



Dep. Dawn Taylor
Sterling
571-918-1813

Dawn.S.Taylor@Loudoun.gov

Dep. Jamie Holben
Sugarland
571-420-0036

Jamie.Holben@Loudoun.gov

Dep. Matthew Harvey
Countryside, Cascades
571-465-0172

Matthew.Harvey@Loudoun.gov





Trash Dumping

§ 33.2-802. Dumping trash; penalty

- A. It shall be unlawful for any person to dump or otherwise dispose of trash, garbage, refuse, litter, a companion animal as defined in § 3.2-6500 for the purpose of disposal, or other unsightly matter on public property, including a public highway, right-of-way, or property adjacent to such highway or right-of-way, or on private property without the written consent of the owner or his agent.
- B. When any person is arrested for a violation of this section, and the matter alleged to have been illegally dumped or disposed of has been ejected from a motor vehicle or transported to the disposal site in a motor vehicle, the arresting officer may comply with the provisions of § 46.2-936 in making an arrest.

When a violation of the provisions of this section has been observed by any person, and the matter illegally dumped or disposed of has been ejected or removed from a motor vehicle, the owner or operator of the motor vehicle shall be presumed to be the person ejecting or disposing of the matter. However, such presumption shall be rebuttable by competent evidence.

- C. Any person convicted of a violation of this section is guilty of a misdemeanor punishable by confinement in jail for not more than 12 months and a fine of not less than \$250 or more than \$2,500, either or both. In lieu of the imposition of confinement in jail, the court may order the defendant to perform a mandatory minimum of 10 hours of community service in litter abatement activities.
- D. The governing bodies of localities may adopt ordinances not in conflict with the provisions of this section and may repeal or amend such ordinances.
- E. The provisions of this section shall not apply to the lawful disposal of such matter in landfills.

(Code 1950, § 33-279.1; 1950, p. 453; 1970, c. 264, § 33.1-346; 1972, c. 65; 1976, c. 773; 1978, c. 226; 1981, c. 340; 1988, c. 805; 1995, c. 657; 2000, c. 20; 2003, cc. 113, 787; 2013, c. 156; 2014, c. 805.)





Parking Regulations

480.01 - PARKING VEHICLE WITHOUT STATE LICENSE OR STATE INSPECTION ON HIGHWAY

No person shall park a vehicle having no current State license or current State inspection on any highway in the County.
(Ord. 97-01. Passed 2-19-97)

480.06 - PARKING NEAR INTERSECTIONS

No person shall park a vehicle within twenty feet of the intersection of curb lines or, if none, within fifteen feet of the intersection of property lines at an intersection of highways.
(Ord. 97-01. Passed 2-19-97.)

480.101 - PARKING TRAILERS IN RESIDENTIAL ZONES

No person shall park a trailer or semi-trailer, regardless of whether such trailer or semi-trailer is attached to another vehicle, except while loading and unloading for a period not to exceed 72 hours, within or along any public highway of the County where the land abutting such highway is classified as a Residential District under the Zoning Ordinance of the County.
(Ord. 09-03. Passed 1-12-09.)





Parking Regulations



480.10 - PARKING MAJOR RECREATIONAL EQUIPMENT IN RESIDENTIAL ZONES

No person shall park any major recreational equipment for longer than twenty-four hours within or along any public highway of the County where the land abutting such highway is classified as a Residential District under the Zoning Ordinance of the County.

For purposes of this section, "major recreational equipment" is defined as

- travel trailers,
- pickup campers,
- motorized dwellings,
- tent trailers,
- boats and boat trailers,
- houseboats and the like
- and cases or boxes used for transporting such recreational equipment, whether occupied by such equipment or not.

This section shall become effective on June 15, 1997.

(Ord. 97-01. Passed 2-19-97)





Parking Regulations



480.09 - PARKING COMMERCIAL VEHICLES IN RESIDENTIAL ZONES

- a) No person shall park any commercial vehicle, except while loading or unloading, while involved in construction work or while performing services, such as repair and/or installation of equipment, within or along any highway of the County where the land...is classified as a Residential District under the Zoning Ordinance of the County.
- b) The provisions of this subsection do not apply to a commercial vehicle when picking up or discharging passengers or when temporarily parked pursuant to the performance of work or service at a particular location, nor shall the provisions of this subsection apply to utility generators located on vehicles or trailers and being used to power network facilities during a loss of commercial power.

For purposes of this section, a “commercial vehicle” means:

1. Any solid waste collection vehicle, tractor truck or tractor truck/semitrailer or tractor truck/trailer combination, dump truck, concrete mixer truck, towing and recovery vehicle with a registered gross weight of 12,000 pounds or more, and any heavy construction equipment, even if any of the foregoing are parked on a truck, trailer, or semitrailer;
2. Any trailer, semitrailer, or other vehicle in which food or beverages are stored or sold;
3. Any trailer or semitrailer used for transporting landscaping or lawn-care equipment whether or not such trailer or semitrailer is attached to another vehicle;
4. Any vehicle licensed for use as a contract carrier or limousine;
5. Any vehicle more than 21 feet in length or more than eight feet in height including appurtenances attached to the vehicle or with a width of 102 inches or more, or with a gross weight of 12,000 or more pounds;
6. Any trailer, semitrailer, or double axle utility trailer, regardless of whether a state safety inspection is required, except those designed to be used as a camper trailer or boat trailer or a single axle utility trailer, regardless of whether such trailer or semitrailer is attached to another vehicle; or
7. Any vehicle of any size that is being used in the transportation of hazardous materials as defined in § 46.2-314.4 of the Code of Virginia; or
8. Any vehicle with three or more axles

(Ord. 97-01. Passed 2-19-97; Ord. 12-12. Passed 7-17-12.)





Parking Regulations



480.105 - PARKING PROHIBITED IN SPECIFIED PLACES

- a) No person shall park a vehicle, except when necessary to avoid a conflict with other traffic or in compliance with the directions of a deputy sheriff or other police officer or traffic control device, in any of the following places:
1. On a sidewalk;
 2. In front of or in any such manner which obstructs access to or from a public or private driveway;
 3. On a crosswalk or within 20 feet of a crosswalk at an intersection;
 4. Within 30 feet upon the approach of any flashing beacon, stop sign or traffic control signal located at the side of a roadway;
 5. On the roadway side of any vehicle parked at the edge or the curb of a street;
 6. Upon any bridge or other elevated structure upon a street or highway or within a tunnel;
 7. So as to prevent the use of curb ramps located on public property or on privately owned property open to the public;
 8. At any place where official signs prohibit parking (Refer to Section 480.001 for definition of “official sign”);
 9. Perpendicular to any curb whether on roadway or dead end cul-de-sacs where not marked as an official parking space (Section 46.2-889, Code of Virginia);
 10. Parking on the left edge of the roadway facing traffic;
 11. Within 20 feet of the driveway entrance to any fire station and on the street opposite the entrance to any fire station within 75 feet of the entrance when properly sign posted;
 12. Parking across or on any line or marking painted on the street by VDOT or the County to designate a vehicular parking area or space;
 13. Parking during specified “No Parking” hours.
- b) No person other than a deputy sheriff, police officer, or member of the fire and rescue department shall move a vehicle into any such prohibited area or away from a curb such distance as is unlawful, or start or cause to be started the motor of any motor vehicle, change or move the levers, brake starting device, gears, or other mechanism of a parked motor vehicle to a position other than that in which it was left by the owner or driver thereof, or attempt to do so.

(Ord. 02-14. Passed 10-21-02; Ord. 06-01. Passed 2-7-06)





Don't Find Yourself on Thin Ice!



- Never walk or attempt to drive on frozen waterways
- Many communities strictly prohibit ice skating on frozen ponds
- Never attempt to enter water if someone has fallen through the ice- call 911 & extend a branch or rope.

Immediately Report Anyone Attempting to Venture on the Ice
Speak With Your Children About the Danger of Walking on and Playing on Frozen Waterways





Alert Loudoun

Learn About Recent Incidents and Arrests in Loudoun County via the
Daily Incident Report



To receive the Daily Incident Report and other LCSO news, traffic alerts, press releases via text or email, please register for Alert Loudoun at sheriff.loudoun.gov/alertloudoun.

01/03/18 01/04/18 1851 hrs. 0530 hrs.	600 block W. Jasper Ct. Sterling	Auto Theft: A 1992 black Honda Civic was reported stolen from the area. SO180000186
--	--	---





LCSO Medication Disposal Drop Box



DO YOU HAVE UNUSED OR EXPIRED MEDICATIONS?

YOU MAY DROP OFF:

- Prescription Medications
- Prescription Patches
- Over the Counter Medications
- Vitamins
- Sample Medications
- Medications for Pets

THE FOLLOWING ARE NOT ACCEPTED:

- Needles (Sharps)
- Liquid Medications
- Aerosol Containers
- Inhalers
- Ointments and Lotions
- Medications from Businesses



Eastern Loudoun Sheriff's Station
46620 East Frederick Drive,
Sterling

Dulles South Public Safety Center
25216 Loudoun County Parkway,
South Riding

University Sheriff's Station
45299 Research Pl, Ashburn

Western Loudoun Station
47 W. Loudoun St, Roundhill





Narcotics Tip-Line



The Loudoun County Sheriff's Office, as part of the regional heroin initiative called the Heroin Operations Team (HOT), has expanded the agency's Narcotics tip-line as a 'HOT'-line for suspected drug activity and drug usage in the county.

Loudoun residents are encouraged to call 1-833-HOT-TIPS (1-833-468-8477) with any information regarding narcotics activity.





LCSO Website



[Sheriff.Loudoun.Gov](http://sheriff.loudoun.gov)

- [Report a Crime Online](#)
 - ✓ Report Certain Crimes Like Larceny, ID Theft & Vandalism via the Internet.
- [Community Resource Directory](#)
 - ✓ Search Community Resources for Health & Human Services in Loudoun County.
- [Case Follow-Up](#)
 - ✓ Victim's can Follow-up & Inquire on Status of Case via the Website.
- [Find My Station](#)
 - ✓ A Searchable Map allowing Residents to find their nearest Station providing
 - ✓ Services such as Fingerprinting & Background Checks.



- [Traffic Incident Mapping Using Online Mapping Resources](#)



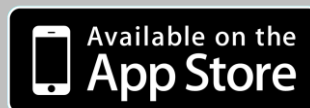


Loudoun County Sheriff's Office App



Put Crime Information at Your Fingertips

- Submit Crime Tips
- Report a Crime
- Make a Traffic Complaint
- Provide Citizen Feedback
- Learn the Latest Public Safety News
- Review Current Traffic Incidents Dispatched by the LCSO
- Receive Non-Emergency Community Notifications
- Learn of Upcoming Meetings & Events Held by the LCSO





LCSO Online Reporting

Sheriff.Loudoun.Gov



LOUDOUN COUNTY SHERIFF'S OFFICE

CONNECT WITH US: [f](#) [t](#) [v](#) [v](#)

REPORT A CRIME **CITIZEN FEEDBACK** **VICTIM SERVICES** **CAREERS** **OFFICE LOCATIONS** **SERVICES & PROGRAMS**

Mission Statement:
The Loudoun County Sheriff's Office will strive to continuously improve safety and law enforcement services to all members of our community through the Step Up Strategy of improved service, technology, efficiency and professionalism.

We will work interactively with federal, state, and other local law enforcement authorities to vigorously and fairly enforce criminal laws by sharing capabilities, strategies and assets. We will partner with community services groups and human services agencies to implement strategies that improve the quality of life for County residents, businesses and visitors. Finally, we will engage our community through courteous and proactive outreach and communication, and work diligently to constantly improve our professionalism.

Every member of the Loudoun County Sheriff's Office is expected to contribute to the furtherance of this mission.

Project Spotlight

Resource Directory
Community Resource Directory
Linking Residents to Community Resources.

Department News
Shooting in Ashburn Determined to be Isolated Incident, Circumstances Remain Under Investigation
An investigation into a shooting in Ashburn has determined the incident to be isolated. It involved two people known to each other and occurred inside a car. Read on...
KKK Filers are Located Across Loudoun Communities
Loudoun County-The Loudoun County Sheriff's Office (LCSO) and the Leesburg Police Department (LPD) are working together to investigate the origins of Ku Klux Klan (KKK) recruitment fliers found by Loudoun residents this weekend. Read on...
[VIEW ALL](#)

Hours
Monday - Friday
8:30 am - 5:00 pm

Contact a Recruiter
703-777-1202

Narcotics Tip Line
703-779-0552

Loudoun County Crime Solvers
703-777-1919

Divisions ▶
Cold Case Initiative ▶
Forms ▶
Media Relations ▶
Mission Statement ▶
Public Safety Messages ▶
Special Events Planning ▶
Traffic Incident Map ▶

Incident Type	Definition	Examples
Alcohol Violation	When alcohol is consumed by a person under the age of 21, sold to a person under the age of 21 or purchased for a person under the age of 21.	Underage parties where persons less than 21 are consuming alcohol, locations where it is believed persons less than 21 are being sold alcohol or where persons are suspected of purchasing alcohol for those less than 21 years of age.
Civil Dispute	A disagreement between people or groups in which no criminal laws are broken.	Child custody disputes, neighbor disputes, common property disputes, etc.
Credit Card Fraud	Occurs when the credit card or credit card number(s) are used fraudulently without the consent of the cardholder.	Your wallet is lost or stolen and purchases are made on your credit card without your consent. An unauthorized purchase appears on your credit card statement from an online retailer.
Credit Card Theft	Taking or obtaining of credit card(s), or credit card number(s), with the intent to use them fraudulently.	Your credit card is stolen from your person or your credit card number is stolen by an unknown person.
Destruction of Property/Vandalism	The act of changing, modifying defacing public or private property.	A vehicle was damaged on the exterior, but no parts were removed or entry was made into the vehicle.
Fraud/False Pretense	Fraudulently obtaining or selling goods and services.	Construction work intentionally undone. False internet products or returns. Non-delivery of tickets.
Harassing Phone Calls/Emails	Unwanted phone calls or e-mail of an annoying, harassing nature.	Immediate phone hang-ups, obscene language, etc. with no known suspects.
Identity Theft	Obtaining another's personal identifying information and using it to obtain credit, goods or services.	Someone obtains a credit card using your Social Security Number or obtains phone service using your personal information.
Larceny/Theft	Your property is taken without your permission.	Someone takes your cellular phone without permission. Lost property is not a theft.
Lost Property	Property is missing or lost.	This is not theft of property. Does not include lost passports, social security cards or driver's licenses.
Narcotics Activity	Suspected narcotics activity.	Includes suspected sales of narcotics, traffic indicating the sale of narcotics, consumption of illegal narcotics.
Shoplifting	Property is taken from a business without paying.	Someone steals consumable product from a business and leaves without paying. This includes concealment.
Suspicious Event/Circumstance	Suspicious activity that you wish for the Sheriff's Office to know about, but is not necessarily a crime.	Someone you do not know hangs out on your street corner for several hours every afternoon. Cars that you do not recognize are parked in front of your home and then leave at all hours of the night. Your neighbor has frequent visitors that only stay for a couple of minutes at a time.
Theft From a Building	Property is taken from a building.	Someone takes property from a building such as a home or business. This cannot be a burglary or shoplifting.
Theft From a Vehicle	Property is stolen from a motor vehicle.	Stolen equipment or belongings from a vehicle.
Theft of Vehicle Parts/Accessories	Auto parts attached to a vehicle are stolen.	Types of equipment attached to a vehicle include tires, engine parts, headlights, etc.





TEXT 911



HAVE AN EMERGENCY?

911
CALL IF YOU CAN
TEXT IF YOU CAN'T

now in LOUDOUN COUNTY

Know When To TEXT TO 911

- If you are deaf, hard of hearing or have a speech disability.
- If you cannot speak due to injury or medical condition.
- If you are in a threatening situation and a voice call could increase the threat.
- If you cannot make a call because your mobile phone reception is poor.

www.loudoun.gov/text911

A Loudoun County publication, February 2016. To request this information in an alternate format, call the Public Affairs and Communications office at 703-777-0111, TTY 721.

Know When to Text to 911

- If you are deaf, hard of hearing or have a speech disability;
- If you cannot speak due to an injury or medical condition;
- If you are in a threatening situation and a voice call could increase the threat; or
- If you cannot make a call because your mobile phone reception is poor.

To Send a Text to 911

- Enter the numbers “911” in the “To” or “Recipient” field
- Type a brief but detailed message that includes location and type of the emergency, and press “Send.”
- Do not copy anyone on a text to 911
- Do not include photos or videos.
- Currently, text to 911 in Loudoun County should be in English only.
- A text or data plan is required to place a text to 911 and standard text messaging charges apply.





Sheriff's Office Technology



- Community Emergency Voice notifications
- Traffic alerts
- Weather alerts

www.loudoun.gov/alert

LCSO Traffic Incident Map

sheriff.loudoun.gov/traffic



- Search reported crimes in an area by address

www.crimereports.com



- Emergency alerts from your local governments in the National Capital Region

www.capitalert.gov

LCSO Social Media



Like us on Facebook



Follow us on Twitter



Follow us on Instagram



Subscribe to us on YouTube





my.VDOT.Virginia.gov

Virginia.gov Agencies Governor Search: Virginia.gov

VDOT Virginia Department of Transportation myVDOT Sign In or Register

Go to www.virginiadot.org

Need Location Details Contact

How can we help you?

- ☐ I need a road repaired
- ☐ I need something removed from a road
- ☐ I need signs, signals, or guardrail repaired
- ☐ I need new signs or traffic devices installed
- ☐ I have a question or need information
- ☐ I want to submit a claim (includes mailbox damage)

Note: VDOT does not maintain roads in cities, towns, or in Henrico and Arlington counties, except for interstates and major primary roads. Please submit a separate report for each request. If your request is related to a road hazard that needs immediate attention, please call 1-800-367-7623 (FOR-ROAD). For emergencies, please dial 911.

Continue >

Check service request status

What's your service request number?

Check your status

Traffic Information

511 offers real-time traffic info. Anytime you need it, anywhere you are.

Popular Links

- Business Center
- High Occupancy Vehicle (HOV) Systems
- Current Opportunities
- Consider a Career at VDOT
- Manuals, Guides and Instructional & Informational Memoranda
- Current Opportunities
- Design-Build Proposal Submittals and Rankings
- High Occupancy Vehicle (HOV) Lanes - Rules and FAQs

Northern Virginia District Office
14685 Avion Parkway
Chantilly, Virginia 20151
703-383-2000
www.VirginiaDOT.org

Work Requests

Just submit a [work request](#) or
call 1-800-367-ROAD (7623)

Questions? Comments? - Google Chrome

www.virginiadot.org/info/feedbackform.asp

Search this site

Traffic Information

511 offers real-time traffic info. Anytime you need it, anywhere you are.

SMART SCALE Dashboard

Funding the right transportation projects.

SMART SCALE DASHBOARD

Virginia Roads

Your one-stop source for VDOT maps, data and project info.

VIRGINIA ROADS

Connect With Us!

Visit Our Social Media Pages

Congratulate to VDOT's Tech Bruce Satterwhite, who won a Tech of the Year award from Q&AUP_CIRC maps in 2010/2011.

9 hours ago

Questions? Comments?

Use this form!

If you have questions or comments for the Virginia Department of Transportation, please use this form and someone will respond as soon as possible.

To report a road problem or request maintenance work, use the myVDOT Portal or call 800-FOR-ROAD (800-367-7623).

Name:

E-mail address:

Confirm e-mail address:

Email subject:

City or county:

Comments:

E^WB

Before submitting this form, please type the characters displayed above:

Submit Comment | Reset Form

Required.





Contact Information

Captain T.J. DeLitta

Station Commander

571-258-3436

TJ.DeLitta@loudoun.gov



1st Lt. Tom Gilligan

Assistant Station Commander

703-737-8173

Thomas.Gilligan@Loudoun.gov

Non Emergency - 703-777-1021

- Traffic Hotline - 703-771-5798
- Narcotics Tip Line - 703-779-0552
- Crime Solvers - 703-777-1919

Thank you for your continued support!

