



Loudoun County Sheriff's Office Eastern Loudoun Station

Quarterly Community Meeting
July 27, 2017
7-8pm



Meeting Agenda



- Welcome
- Sheriff Chapman
- Captain Hines
 - ELS Organization Chart
- Sgt. Rogers Station Operations
 - CR Unit Update
 - Property Crimes Update
- Captain Hines
 - Informational Items
- Contact Information





Eastern Loudoun Station Quarterly Meeting



Sheriff Michael L. Chapman





Loudoun County Sheriff's Office Station Populations



Eastern Loudoun Station

Population: *81,899*

University Station

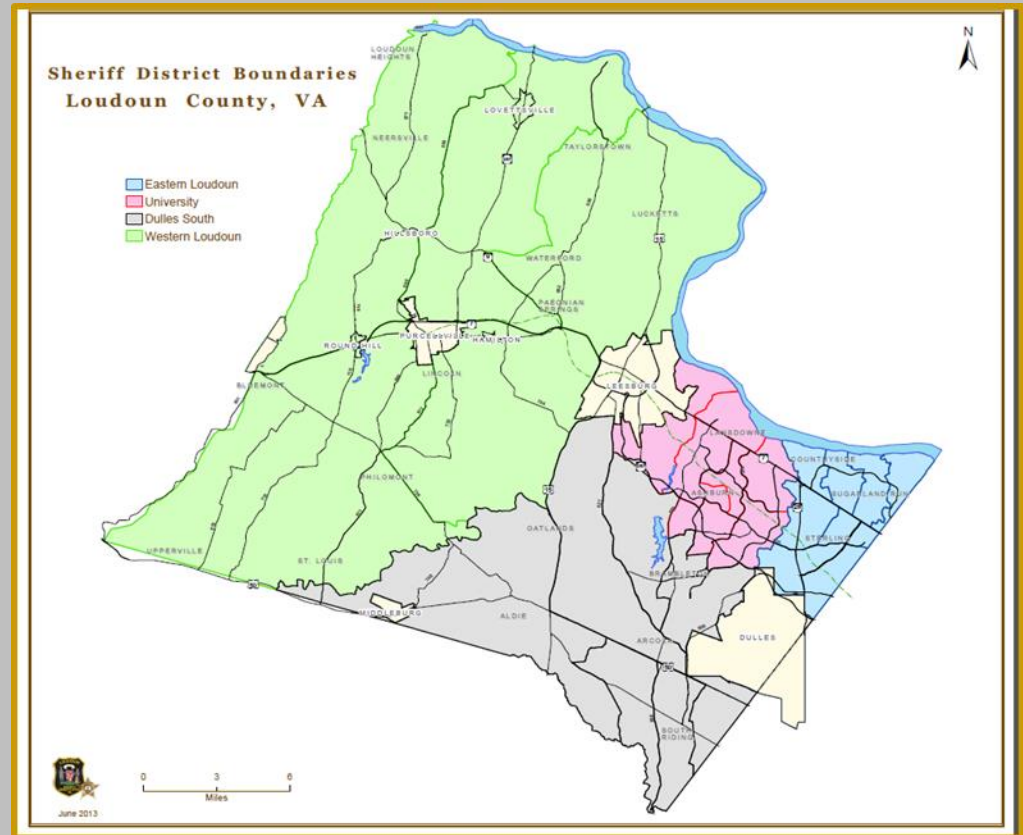
Population: *94,209*

Western Loudoun Station

Population: *52,430*

Dulles South Station

Population: *109,856*

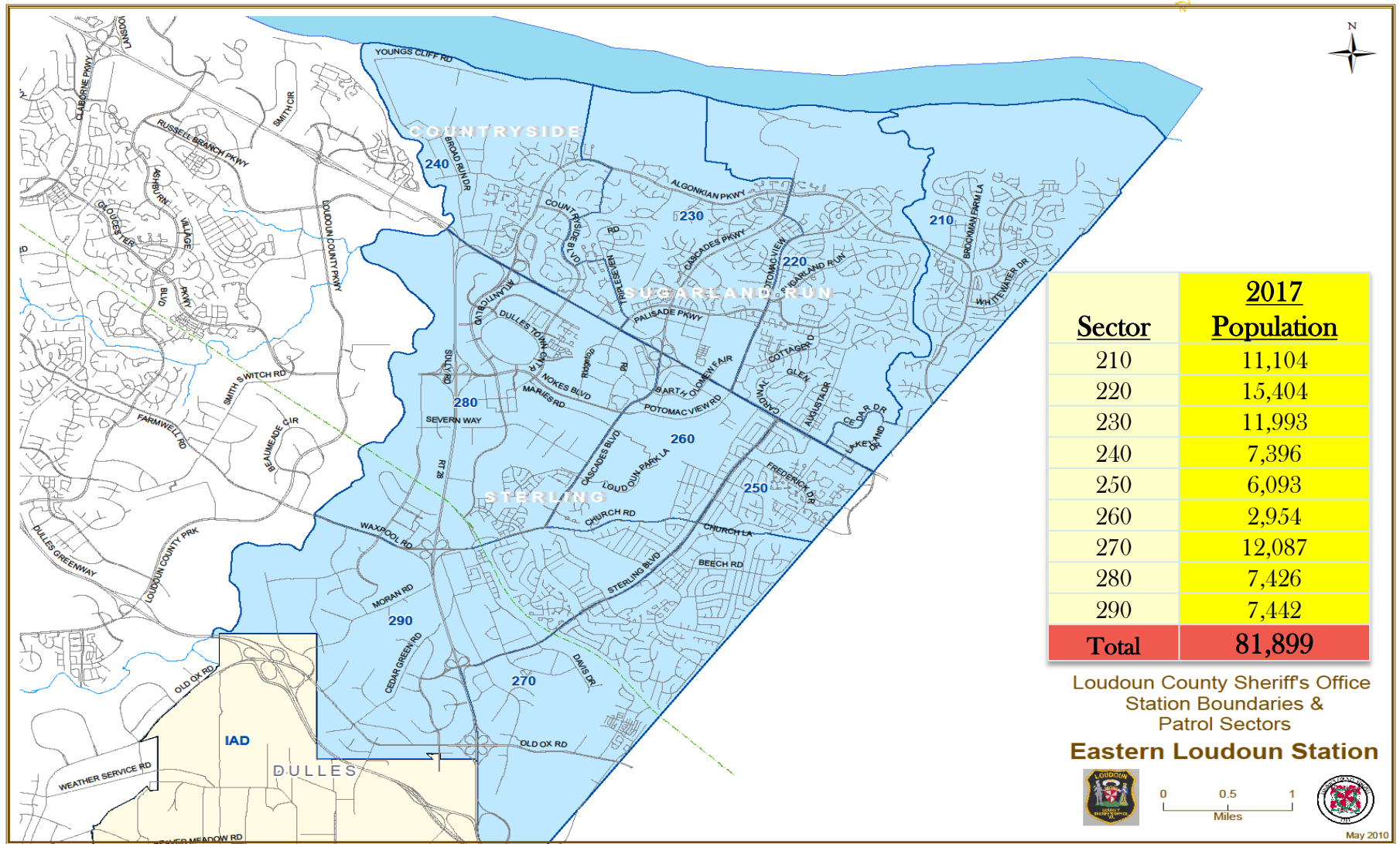


** 2017 Loudoun County Department of Planning and Zoning **





Eastern Loudoun Station Areas of Responsibility and Patrol Sectors





Eastern Loudoun Station Sections





Calls For Service Statistics



ELS Calls For Service YTD

	2016	2017	CHANGE	%
January	4224	4558	334	8%
February	3936	4393	457	12%
March	4284	4845	561	13%
April	4554	4796	242	5%
May	4934	4989	55	1%
June	4851	5034	183	4%
TOTAL	26,783	28,615	1,832	7%

Quarterly Calls For Service

APRIL - JUNE 2017

ELS	14,819
Countywide	50,356
ELS% of Calls	29.43%

Parking Tickets 2017

Jan - Mar	765
Apr- June	842
TOTAL	1,607





Online Reporting Statistics

Citizens Online Police Reporting System

Calendar Year 2017

	Reports Taken	Hours Saved	Cost Savings
January	185	370	\$13,875
February	189	378	\$14,175
March	227	454	\$17,025
April	162	324	\$12,150
May	169	338	\$12,675
June	193	386	\$14,475
July			
August			
September			
October			
November			
December			
Total	1125	2250	\$84,375
CY 2016 Comparison *	1026	2052	\$76,950
CY 2015 Comparison *	1197	2394	\$89,775

* CY Comparisons reflect Jan – June of their respective years.





Community Resource/Station Sergeant

Sergeant Greg Rogers

Community Resource Deputies

Station Detectives

Dulles Town Center Deputies

703-777-0488

Gregory.Rogers@Loudoun.gov





Station Detectives



Det. Charles “Ryan” Willis

703-777-0486

Charles.Willis@loudoun.gov

Det. Roy Ortutay

571-246-4165

Roy.Ortutay@Loudoun.gov

Det. Katie Mitchell

571-258-3138

Katie.Mitchell@Loudoun.gov





Eastern Loudoun Station Detectives



Anzhela Hoelen- Multiple Counts of Credit Card Fraud



- Victim unknowingly lost her CC and when she got her statement there was over \$7000 in charges (54 separate local charges)
- Detective started pulling video of the suspect
- At one store the suspect used a personal store rewards card with the stolen CC
- Ran checks through databases and got a name and local address
- Continued to pull video from stores and found it was the same suspect using the stolen CC at all the different locations
- Obtained 15 Felony warrants for CC fraud with potential for over 30 more misdemeanor warrants to be obtained

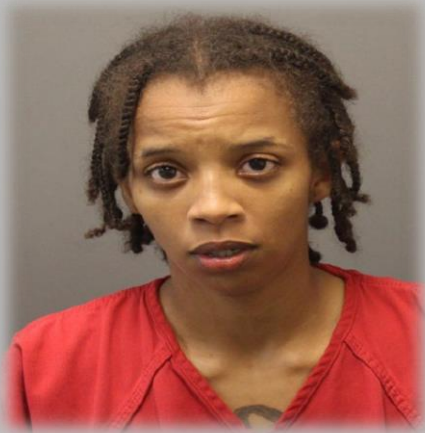




Eastern Loudoun Station Detectives



Whitney Wiggins & Cassandra Gray- Multiple Felonies



- Detective finds a stolen drill set at the pawn shop
- Waits for suspect to return (Gray) with more stolen items and makes arrest
- At the ADC he finds Wiggins waiting for Gray
- She provides false ID and is arrested
- More detecting finds they have pawned a ton of stuff
- Also links them to inactive reports in CAD
- Over 10 Warrants issued so far with more pending as we find older cases.





Phone Scams

Scammers Claiming to be Law Enforcement & Utility Companies!

Law Enforcement: Recently several residents reported receiving calls from a person claiming to be a Sgt. Jackson with the warrants division of the Loudoun Sheriff's Office. The caller claims you have a warrant issued for your arrest and you need to pay monies with a money card.

Utility Company: Several residents and businesses reported receiving calls from a person claiming to be with Dominion Power. In each case, the caller said the victim owed back payments and their electricity would be disconnected if they did not pay.

Utility companies and government agencies will NOT contact you demanding immediate payment by money cards!





Community Resource Officers



Dep. Matthew Harvey
Countryside, Cascades
571-465-0172

Matthew.Harvey@Loudoun.gov

Dep. Jamie Holben
Sugarland
571-420-0036

Jamie.Holben@Loudoun.gov

Dep. Dawn Taylor
Sterling
571-918-1813

Dawn.Taylor@Loudoun.gov





Project Lifesaver



Deputy Jamie Holben

571-420-0036

Jamie.Holben@Loudoun.gov

- Currently, over 1,500 member agencies in 50 states participate in the program—police, sheriff, fire, public safety departments and other emergency responders.
- The method relies on proven radio technology and specially trained search and rescue teams.
- Citizens enrolled in Project Lifesaver wear a small transmitter on the wrist or ankle that emits an individualized tracking signal.
- If an enrolled client goes missing, the caregiver notifies their local Project Lifesaver agency, and a trained emergency team responds to the wanderer's area.
- Most who wander are found within a few miles from home, and search times have been reduced from hours and days to minutes.
- Recovery times for PLI clients average 30 minutes — 95% less time than standard operations.

[-http://www.projectlifesaver.org/about-us](http://www.projectlifesaver.org/about-us)





LCSO Medication Disposal Box

UNUSED OR EXPIRED MEDICATION

YOU MAY DROP OFF:

- ❖ Prescription Medications
- ❖ Prescription Patches
- ❖ Over the Counter Medications
- ❖ Vitamins
- ❖ Sample Medications
- ❖ Medications for Pets

THE FOLLOWING ARE NOT ACCEPTED:

- ❖ Needles (Sharps)
- ❖ Liquid Medications
- ❖ Aerosol Containers
- ❖ Inhalers
- ❖ Ointments and Lotions
- ❖ Medications from Businesses



Eastern Loudoun Sheriff's Station
46620 East Frederick Drive,
Sterling

Dulles South Public Safety Center
25216 Loudoun County Parkway,
South Riding

University Sheriff's Station
45299 Research Pl, Ashburn

Western Loudoun Station
47 W. Loudoun St, Roundhill

Monday – Friday
8:30am – 5:00pm





Secure the Call



Have an Old Unused Cell Phone that You No Longer Need?

The Loudoun County Sheriff's Office has four locations with donation barrels:

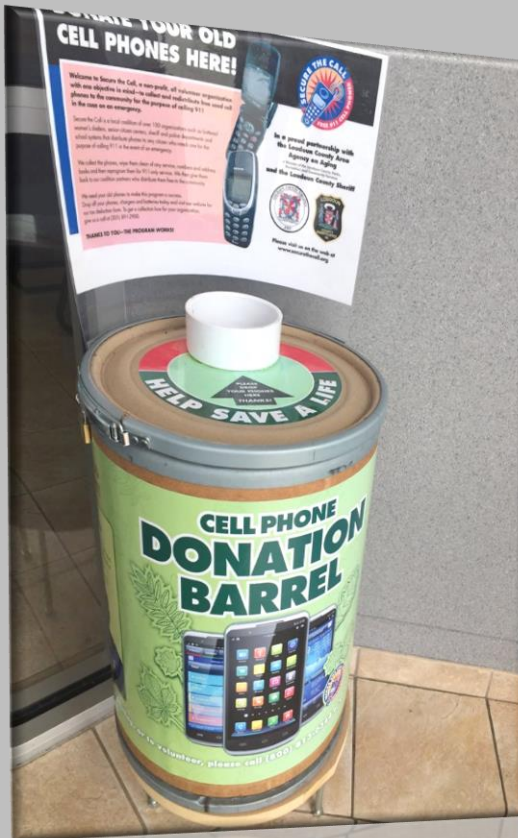
Dulles South Sheriff's Station
25216 Loudoun County Parkway, South Riding

Loudoun Sheriff's Office Administration Building
803 Sycolin Road, Leesburg

Eastern Loudoun Sheriff's Station
46620 E. Frederick Drive, Sterling

University Station
45299 Research Place, #100, Ashburn

Drop off is available at these current locations Monday-Friday, from 8:30 a.m. to 5 p.m.





LCSO Website



Sheriff.Loudoun.Gov

Website Offers Innovative & Interactive Features in a More User Friendly Layout

- Report a Crime Online
 - ✓ Report Certain Crimes Like Larceny, ID Theft & Vandalism via the Internet.
- Community Resource Directory
 - ✓ Search Community Resources for Health & Human Services in Loudoun County.
- Case Follow-Up
 - ✓ Victim's can Follow-up & Inquire on Status of Case via the Website.
- Find My Station
 - ✓ A Searchable Map allowing Residents to find their nearest Station providing
 - ✓ Services such as Fingerprinting & Background Checks.



- Traffic Incident Mapping Using Online Mapping Resources



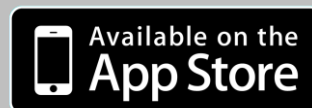


Loudoun County Sheriff's Office App



Put Crime Information at Your Fingertips

- Submit Crime Tips
- Report a Crime
- Make a Traffic Complaint
- Provide Citizen Feedback
- Learn the Latest Public Safety News
- Review Current Traffic Incidents Dispatched by the LCSO
- Receive Non-Emergency Community Notifications
- Learn of Upcoming Meetings & Events Held by the LCSO






LCSO Online Reporting

Sheriff.Loudoun.Gov






CONNECT WITH US: [f](#) [t](#) [v](#)

LOUDOUN COUNTY SHERIFF'S OFFICE

[REPORT A CRIME](#) [CITIZEN FEEDBACK](#) [VICTIM SERVICES](#) [CAREERS](#) [OFFICE LOCATIONS](#) [SERVICES & PROGRAMS](#)



Loudoun County Sheriff
Michael L. Chapman ([Bio](#))
[email](#)

Emergency: Dial 911
Non-emergency: 703-777-1021

Administrative Office:
703-777-0407
323 Spoutin Road SE,
Leesburg, VA 20175

Mailing Address:
Loudoun County Sheriff's Office
P.O. Box 7200
Leesburg, VA 20177-7200

Hours
Monday - Friday
8:30 am - 5:00 pm

Contact a Recruiter
703-777-LCSO (5276)
703-775-0552

Loudoun County Crime Solvers
703-777-1919

Divisions

Cold Case Initiative

Forms


Media Relations

Mission Statement

Public Service Announcements

Special Events Planning

Traffic Incident Map



Mission Statement:
The Loudoun County Sheriff's Office will strive to continuously improve safety and law enforcement services to all members of our community through the Step Up Strategy of improved service, technology, efficiency and professionalism.


We will work interactively with federal, state, and other local law enforcement authorities to vigorously and fairly enforce criminal laws by sharing capabilities, strategies and assets. We will partner with community services groups and human services agencies to implement strategies that improve the quality of life for County residents, businesses and visitors. Finally we will engage our community through courteous and proactive outreach and communication, and work diligently to constantly improve our professionalism.

Every member of the Loudoun County Sheriff's Office is expected to contribute to the furtherance of this mission.

Project Spotlight

Report A Crime Online

Report A Crime Online
An Online Citizen Crime Reporting System.



Compliments Corner

ALERT LOUDOUN

FIND MY STATION

CRIME MAPS & STATS

Department News

Teacher Charged with DUI, Possession of Alcohol at Sterling Middle School
A Loudoun County teacher was arrested today for DUI and having an open container of alcohol inside the school. [Read on...](#)

LC SO Seeks Whoreabouts of Missing Teenager Last Seen in Leesburg Area
The Loudoun County Sheriff's Office is asking for the public's assistance to help locate a missing teenager from the Leesburg, Virginia area. [Read on...](#)

[VIEW ALL](#)

Calendar

Tue, Apr. 26
University Station Quarterly Meeting

Thu, Apr. 27
Eastern Loudoun Station Quarterly Meeting

Wed, May 3
Western Loudoun Station Quarterly Meeting

[VIEW ALL](#)

Incident Type	Definition	Examples
Alcohol Violation	When alcohol is consumed by a person under the age of 21, sold to a person under the age of 21 or purchased for a person under the age of 21.	Underage parties where persons less than 21 are consuming alcohol, locations where it is believed persons less than 21 are being sold alcohol or where persons are suspected of purchasing alcohol for those less than 21 years of age.
Civil Dispute	A disagreement between people or groups in which no criminal laws are broken.	Child custody disputes, neighbor disputes, common property disputes, etc.
Credit Card Fraud	Occurs when the credit card or credit card number(s) are used fraudulently without the consent of the cardholder.	Your wallet is lost or stolen and purchases are made on your credit card without your consent. An unauthorized purchase appears on your credit card statement from an online retailer.
Credit Card Theft	Taking or obtaining of credit card(s), or credit card number(s), with the intent to use them fraudulently.	Your credit card is stolen from your person or your credit card number is stolen by an unknown person.
Destruction of Property/Vandalism	The act of changing, modifying defacing public or private property.	A vehicle was damaged on the exterior, but no parts were removed or entry was made into the vehicle.
Fraud/False Pretense	Fraudulently obtaining or selling goods and services.	Construction work intentionally undone. False internet products or returns. Non-delivery of tickets.
Harassing Phone Calls/Emails	Unwanted phone calls or e-mail of an annoying, harassing nature.	Immediate phone hang-ups, obscene language, etc. with no known suspects.
Identity Theft	Obtaining another's personal identifying information and using it to obtain credit, goods or services.	Someone obtains a credit card using your Social Security Number or obtains phone service using your personal information.
Larceny/Theft	Your property is taken without your permission.	Someone takes your cellular phone without permission. Lost property is not a theft.
Lost Property	Property is missing or lost.	This is not theft of property. Does not include lost passports, social security cards or driver's licenses.
Narcotics Activity	Suspected narcotics activity.	Includes suspected sales of narcotics, traffic indicating the sale of narcotics, consumption of illegal narcotics.
Shoplifting	Property is taken from a business without paying.	Someone steals consumable product from a business and leaves without paying. This includes concealment.
Suspicious Event/Circumstance	Suspicious activity that you wish for the Sheriff's Office to know about, but is not necessarily a crime.	Someone you do not know hangs out on your street corner for several hours every afternoon. Cars that you do not recognize are parked in front of your home and then leave at all hours of the night. Your neighbor has frequent visitors that only stay for a couple of minutes at a time.
Theft From a Building	Property is taken from a building.	Someone takes property from a building such as a home or business. This cannot be a burglary or shoplifting.
Theft From a Vehicle	Property is stolen from a motor vehicle.	Stolen equipment or belongings from a vehicle.
Theft of Vehicle Parts/Accessories	Auto parts attached to a vehicle are stolen.	Types of equipment attached to a vehicle include tires, engine parts, headlights, etc.





CALL if You Can

TEXT 911

TEXT if You Can't



Available in all of Loudoun County and its incorporated towns.

If you are deaf, hard of hearing, or have a speech disability.

If you cannot speak due to injury or medical condition.



HOW TO TEXT TO 911:

- Enter only 911 in the “To” field.
- Text should be short and include:
 - Location
 - Type of Emergency
- Be prepared to answer questions and follow Call Taker’s instructions.
- Photos and videos cannot be sent to 911.
 - Texts to 911 cannot include more than 1 recipient.
 - TEXT 911 is available for:
 - FIRE
 - MEDICAL
 - POLICE





Sheriff's Office Technology



- Community Emergency Voice notifications
- Traffic alerts
- Weather alerts

www.loudoun.gov/alert

LCSO Traffic Incident Map

sheriff.loudoun.gov/traffic



- Search reported crimes in an area by address

www.crimereports.com



- Emergency alerts from your local governments in the National Capital Region

www.capitalert.gov

LCSO Social Media



Like us on Facebook



Follow us on Twitter



Follow us on Instagram



Subscribe to us on YouTube





my.VDOT.Virginia.gov

Virginia.gov Agencies Governor Search: Virginia.gov

VDOT Virginia Department of Transportation myVDOT Sign In or Register

Go to www.virginiadot.org

Need Location Details Contact

How can we help you?

- ☐ I need a road repaired
- ☐ I need something removed from a road
- ☐ I need signs, signals, or guardrail repaired
- ☐ I need new signs or traffic devices installed
- ☐ I have a question or need information
- ☐ I want to submit a claim (includes mailbox damage)

Note: VDOT does not maintain roads in cities, towns, or in Henrico and Arlington counties, except for interstates and major primary roads. Please submit a separate report for each request. If your request is related to a road hazard that needs immediate attention, please call 1-800-367-7623 (FOR-ROAD). For emergencies, please dial 911.

Continue >

Check service request status

What's your service request number?

Check your status

Traffic Information

511 offers real-time traffic info. Anytime you need it, anywhere you are.

Popular Links

- Business Center
- High Occupancy Vehicle (HOV) Systems
- Current Opportunities
- Consider a Career at VDOT
- Manuals, Guides and Instructional & Informational Memoranda
- Current Opportunities
- Design-Build Proposal Submittals and Rankings
- High Occupancy Vehicle (HOV) Lanes - Rules and FAQs

Northern Virginia District Office
14685 Avion Parkway
Chantilly, Virginia 20151
703-383-2000
www.VirginiaDOT.org

Work Requests

Just submit a [work request](#) or
call 800-367-ROAD (7623)

Questions? Comments? - Google Chrome

www.virginiadot.org/info/feedbackform.asp

Search this site

Traffic Information

511 offers real-time traffic info. Anytime you need it, anywhere you are.

SMART SCALE Dashboard

Funding the right transportation projects.

SMART SCALE DASHBOARD

Virginia Roads

Your one-stop source for VDOT maps, data and project info.

VIRGINIA ROADS

Connect With Us!

Visit Our Social Media Pages

Congratulate to VDOT's Tech Bruce Satterwhite, who won a Tech of the Year award from Q&AUP_CIRC maps in 2010/2011.

9 hours ago

Questions? Comments?

Use this form!

If you have questions or comments for the Virginia Department of Transportation, please use this form and someone will respond as soon as possible.

To report a road problem or request maintenance work, use the myVDOT Portal or call 800-FOR-ROAD (800-367-7623).

Name:

E-mail address:

Confirm e-mail address:

Email subject:

City or county:

Comments:

E^WB

Before submitting this form, please type the characters displayed above:

Submit Comment | Reset Form

Required.





REMINDER



The Loudoun County Sheriff's Office **#9PMRoutine**

- *Lock personal vehicles*
- *Secure valuables in vehicle trunk*
- *Close/Lock residential garages and doors*
- *LCSO Non-Emergency Number (703)777-1021*
- *Safely secure all firearms* **** Not in Vehicles ****
- ***And.....Please share the #9PMRoutine information with your community to help prevent property crimes in your neighborhood !!***





Contact Information



Captain Chris Hines

Station Commander

703-771-5202

Christopher.Hines@loudoun.gov



1st Lt. Dave Hibberd

Assistant Station Commander

703-771-5007

David.Hibberd@Loudoun.gov

Non Emergency – 703-777-1021

- Traffic Hotline – 703-771-5798
- Narcotics Tip Line – 703-779-0552
- Crime Solvers – 703-777-1919

Thank you for your continued support!

