

LCSO - WLS QUARTERLY COMMUNITY MEETING



Tuesday, February 16, 2015
7:00 pm – 8:30 pm
Round Hill Town Office



Western Loudoun Station
23 Main St. 2nd Floor
Round Hill, VA 20141
Main # 571-258-3750





LCSO Mission Statement



SERVICE

TECHNOLOGY

LOUDOUN COUNTY SHERIFF'S OFFICE MISSION STATEMENT

The Loudoun County Sheriff's Office will strive to continuously improve safety and law enforcement services to all members of our community through the Step Up Strategy of improved service, technology, efficiency and professionalism.

We will work interactively with federal, state, and other local law enforcement authorities to vigorously and fairly enforce criminal laws by sharing capabilities, strategies and assets.

We will partner with community services groups and human services agencies to implement strategies that improve the quality of life for County residents, businesses and visitors.

Finally, we will engage our community through courteous and proactive outreach and communication, and work diligently to constantly improve our professionalism.

Every member of the Loudoun County Sheriff's Office is expected to contribute to the furtherance of this mission.

Michael L. Chapman
Sheriff, Loudoun County



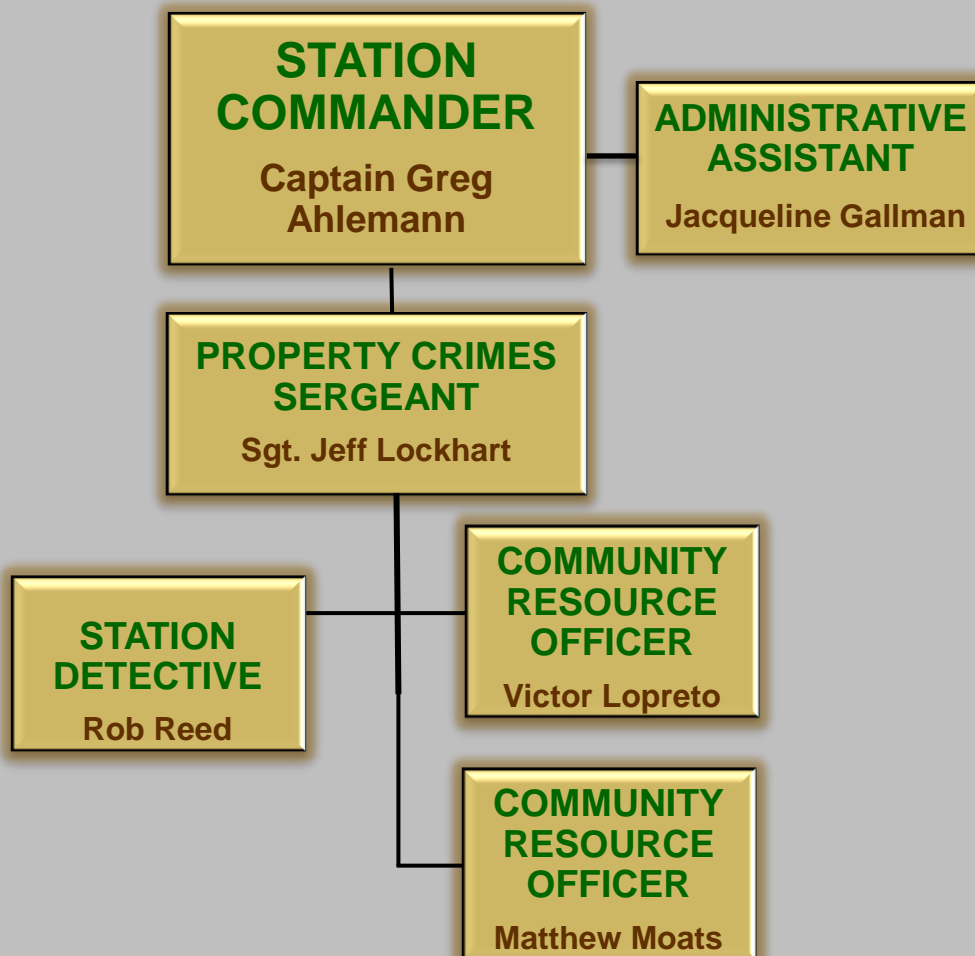
EFFICIENCY

PROFESSIONALISM





WLS Organizational Chart





CROs & Squad/Shift Schedules



VICTOR LOPRETO
Community Resource Officer

571-246-5094

Victor.Lopreto@loudoun.gov



MATTHEW MOATS
Community Resource Officer

571-528-7964

Matthew.Moats@Loudoun.gov

Tuesday - Friday
10:30 AM – 9:00 PM

PATROL SQUADS:

A Days / A Nights

B Days / B Nights

Day Shift: 6:00am - 6:00pm

Night Shift: 4:00pm - 4:00am

7:00pm - 7:00am





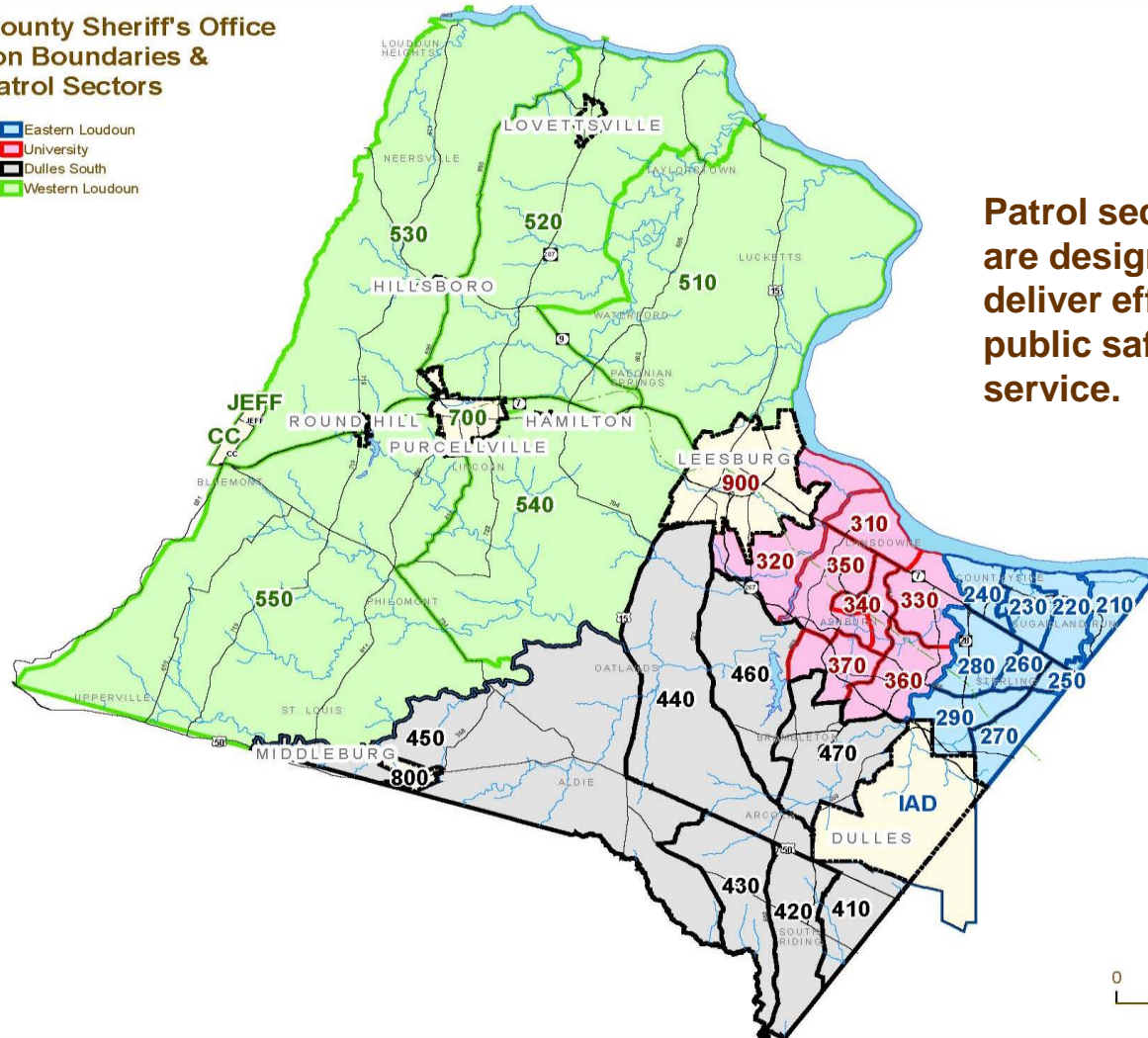
Loudoun County Map

w/ Station Boundaries / Sectors



Loudoun County Sheriff's Office Station Boundaries & Patrol Sectors

- Eastern Loudoun
- University
- Dulles South
- Western Loudoun



**Patrol sectors
are designed to
deliver efficient
public safety
service.**



May 2010





PLANNING FOR THE FUTURE

RENDERING OF NEW WESTERN LOUDOUN STATION





PLANNING FOR THE FUTURE

WESTERN LOUDOUN STATION

Although no public services are available at the current Western Loudoun Station location, it exists as an internal point of presence for Loudoun County Sheriff's Deputies to conduct roll call, follow-up investigations and access departmental information systems.



Now Under Construction!
Anticipated Opening Early Summer 2016!!





PLANNING FOR THE FUTURE

CURRENT PROGRESS!



Original Structure



Excavation



July 2015





PLANNING FOR THE FUTURE

SHERIFF'S STATIONS

- Sally Port
- Temporary Holding Facility
- Booking Area
- Roll Call Room
- Deputy Workroom
- Interview Rooms
- Multi-purpose / Community Meeting Rooms
- Exercise & Locker Rooms
- Evidence Processing & Storage

SHERIFF'S STATION STAFFING

- Receptionist / Administrative Assistant
- Records/Crime Analyst
- Station Deputy / Station Sergeant
- Station Detective(s)
- Community Resource Officers



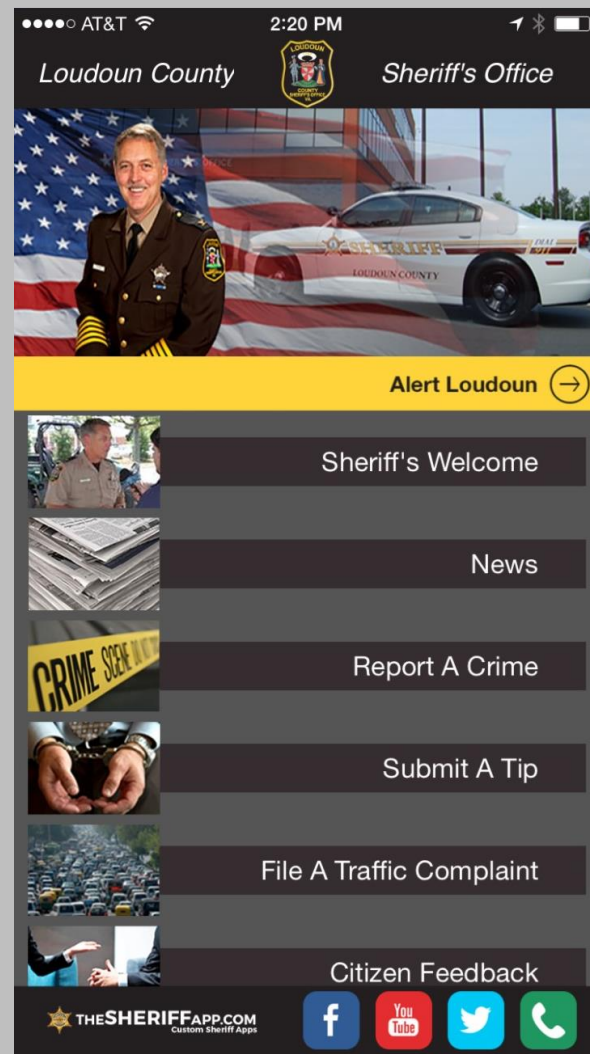


LCSO App



PUT CRIME INFORMATION AT YOUR FINGERTIPS

- Submit Crime Tips
- Report a Crime
- Make a Traffic Complaint
- Provide Citizen Feedback
- Learn the Latest Public Safety News Dispatched by the LCSO
- Receive Non-Emergency Community Notifications
- Learn of Upcoming Meetings & Events Held by the LCSO





LCSO Website



<https://sheriff.loudoun.gov>

***New & Improved Website Offers Innovative & Interactive Features
in a More User Friendly Layout***

- **Report a Crime Online**
 - ✓ Report certain crimes such as larceny, ID theft & vandalism via the Internet.
- **Community Resource Directory**
 - ✓ Search community resources for health & human services in Loudoun County.
- **Case Follow-Up**
 - ✓ Victims can follow-up & inquire about status of cases via the website.
- **Find My Station**
 - ✓ A searchable map allowing residents to find their nearest station providing services such as fingerprinting & background Checks.
- **Future Enhancements**
 - ✓ Traffic Incident Mapping Using Online Mapping Resources



Find us on Facebook:

<https://www.facebook.com/loudounsheriff>

And on Twitter:

<https://twitter.com/loudounsheriff>





LCSO ONLINE REPORTING

WWW.SHERIFF.LOUDOUN.GOV



ALERT LOUDOUN



FIND MY STATION



CRIME MAPS & STATS



Report a Crime Online FAQ's

[Home](#) > Report A Crime

Loudoun Sheriff's Office Online Crime Reporting System

Report a Crime Online

Welcome to the Loudoun County Sheriff's Office Citizens Online Police Reporting System. **If this is an Emergency or a crime is in progress/just occurred, please call 911.** Using this online citizen crime reporting system allows you to submit a report without leaving your home; however, not every crime can be reported. Please confirm the following to find out if online citizen crime reporting is right for you:

- This is not an emergency?
- This incident occurred within Loudoun County?
- This is not a motor vehicle crash or hit and run?

If you answered yes to all of the above questions, you are ready to file your report online. Please make sure to turn off your pop-up blocking software before filing the report. If you answered no to any of the questions, please look at our [Online Crime Reporting Frequently Asked Questions](#) section. Upon completion of this report process you will:

- See the words: "Your online police report has been submitted" showing that your report is complete.
- Be given a temporary report number.
- Be able to print a copy of the temporary report to keep for your records.

Please Note:

- All cases filed using the Citizen's Online Crime Reporting System will be reviewed.
- Upon review, if further investigation of your case is needed, you may be contacted.
- **Filing a false police report is a CRIME.**

Anyone found to have submitted a false police report will be prosecuted under the authority of Virginia State Code §18.2-461, which shall be punishable as a Class 1 misdemeanor. Maximum possible penalty is one year in jail and/or \$2,500 fine. The Loudoun County Sheriff's Office Citizen's Online Crime Reporting System accepts the following types of incidents:

- Alcohol Violations
- Civil Disputes
- Credit Card Fraud
- Destruction of Property
- Fraud/False Pretenses
- Harassing Calls/Emails
- Identity Theft
- Theft
- Theft From Vehicle
- Lost Property
- Narcotics Activity
- Suspicious Event/Circumstances

[Please Click Here to Start Your Online Report](#)

[Please click here for Traffic Complaints](#)

[Please click here for Agency Questions or Concerns](#)

Incident Type	Definition	Examples
Alcohol Violation	When alcohol is consumed by a person under the age of 21, sold to a person under the age of 21 or purchased for a person under the age of 21.	Underage parties where persons less than 21 are consuming alcohol, locations where it is believed persons less than 21 are being sold alcohol or where persons are suspected of purchasing alcohol for those less than 21 years of age.
Civil Dispute	A disagreement between people or groups in which no criminal laws are broken.	Child custody disputes, neighbor disputes, common property disputes, etc.
Credit Card Fraud	Occurs when the credit card or credit card number(s) are used fraudulently without the consent of the cardholder.	Your wallet is lost or stolen and purchases are made on your credit card without your consent. An unauthorized purchase appears on your credit card statement from an online retailer.
Credit Card Theft	Taking or obtaining of credit card(s), or credit card number(s), with the intent to use them fraudulently.	Your credit card is stolen from your person or your credit card number is stolen by an unknown person.
Destruction of Property/Vandalism	The act of changing, modifying, defacing public or private property.	A vehicle was damaged on the exterior, but no parts were removed or entry was made into the vehicle.
Fraud/False Pretense	Fraudulently obtaining or selling goods and services.	Construction work intentionally undone. False internet products or returns. Non-delivery of tickets.
Harassing Phone Calls/Emails	Unwanted phone calls or e-mail of an annoying, harassing nature.	Immediate phone hang-ups, obscene language, etc. with no known suspects.
Identity Theft	Obtaining another's personal identifying information and using it to obtain credit, goods or services.	Someone obtains a credit card using your Social Security Number or obtains phone service using your personal information.
Larceny/Theft	Your property is taken without your permission.	Someone takes your cellular phone without permission. Lost property is not a theft.
Lost Property	Property is missing or lost.	This is not theft of property. Does not include lost passports, social security cards or driver's licenses.
Narcotics Activity	Suspected narcotics activity.	Includes suspected sales of narcotics, traffic indicating the sale of narcotics, consumption of illegal narcotics.
Shoplifting	Property is taken from a business without paying.	Someone steals consumable product from a business and leaves without paying. This includes concealment.
Suspicious Event/Circumstance	Suspicious activity that you wish for the Sheriff's Office to know about, but is not necessarily a crime.	Someone you do not know hangs out on your street corner for several hours every afternoon. Cars that you do not recognize are parked in front of your home and then leave at all hours of the night. Your neighbor has frequent visitors that only stay for a couple of minutes at a time.





CopLogic

Online Crime Reporting Statistics

Calendar Year 2015 Stats

2015	TOTAL REPORTS	HOURS SAVED	COST SAVINGS
TOTAL	2266	4532	\$169,950.00

2013 COPLOGIC STATISTICS:

Total Online Reports: 1671
Hours Saved: 3342
Cost Savings: \$125,325

2014 COPLOGIC STATISTICS:

Total Online Reports: 2355
Hours Saved: 4710
Cost Savings: \$176,625

Total Reports 2015



From 2013 – 2015, approximately 6,300 incidents have been reported using the online reporting system CopLogic. This has resulted in nearly 12,600 deputy hours saved, at a cost savings of approximately **\$471,900** thus far – **in only three years!!!**





NARCAN



LCISO BEGINS PILOT PROGRAM TO EQUIP DEPUTIES WITH NASAL NARCAN

This program is part of the comprehensive approach of the Heroin Operations Team (HOT) initiative announced by Sheriff Chapman and Rep. Comstock in April 2015.

Thirty-one deputies in the western Loudoun area have been trained in the use of NARCAN, a life saving tool when seconds count.



What is NARCAN?

Nasal NARCAN is a nasal form of the drug naloxone that can reverse the effects of opiates such as heroin, oxycodone and hydrocodone.

On February 10, 2016, two Loudoun County deputies are credited with saving a man's life due to a potentially fatal heroin overdose after they utilized their training and used their agency issued naloxone to help revive the man.





DEA Exhibit

DEA National Touring Exhibit

Drugs: Costs and Consequences

Opening Eyes to the Damage Drugs Cause

A Multi-Agency Collaboration

An interactive, visual, hands-on traveling exhibit

750 Miller Drive, SE, Suite F-1, Leesburg, Virginia

571-258-3888



**FREE
ADMISSION**

January 12 - September 11, 2016

Tuesday - Saturday, 10:00 AM - 5:00 PM

***** Parental Discretion is advised due to the intensity of some of the exhibits**



www.drugexhibit.org or
www.deamuseum.org





WESTERN LOUDOUN PART I & II CRIME STATS



[Includes 700]

WESTERN LOUDOUN CRIME STATS PART I –2014 vs 2015

CRIME TYPE	2014	2015	CHANGE 2014 vs 2015	% Inc / Decr
Aggravated Assault	6	5	-1	-16.67%
Auto Theft	12	22	+10	+83.33%
Burglary	46	24	-22	-47.83%
Larceny	129	144	+15	-10.42%
Rape	3	7	+4	+133.33%
Robbery	2	4	+2	100%
Homicide	1	0	-1	-100%

WESTERN LOUDOUN CRIME STATS PART II - 2014 vs 2015

CRIME TYPE	2014	2015	CHANGE 2014 vs 2015	% Inc / Decr
Destruction of Property	121	198	+77	+63.64%
DIP	26	20	-6	-23.08%
Disorderly Conduct	12	3	-9	-75%
DUI	51	61	+10	+19.61%
Liquor Violation	8	11	+3	+37.5%
Narcotics Related	73	91	+18	+24.66%
Runaway	23	16	-7	-30.43%
Sex Assault	3	7	+4	+133.33%
Simple Assault	98	101	+3	+3.06%
Weapons Violation	10	10	0	0%

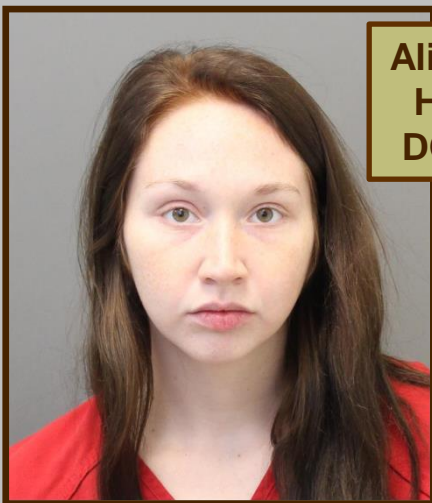




WLS Significant Incidents



GRAND LARCENY



Alison C. Bieler
Hamilton, VA
DOB: 12/24/94



Donald E. Bieler
Hamilton, VA
DOB: 10/28/87

These two Hamilton residents have been charged in the theft of a vehicle and 11 firearms from family members. All of the firearms and the vehicle have been recovered.

The Bielers were apprehended in December in Berkley County, WV.

Donald Bieler is charged with grand larceny of firearms (felony), larceny with intent to sell (felony), and two counts of obtaining money by false pretenses (misdemeanor).

Alison Bieler is charged with larceny of firearms (felony), larceny with intent to sell (felony), and unauthorized use of a vehicle (felony).

Both suspects also face additional similar charges in neighboring jurisdictions.





CRISIS INTERVENTION



**Loudoun County's first Crisis Intervention Team [CIT]
Assessment Center opened October 1st
Shenandoah Building in Leesburg
102 Heritage Way, N.E.
Open Daily 7 a.m. to 11:00 p.m.**

- ❑ Funded through a grant by the VA Dept. of Behavioral & Developmental Services
- ❑ An ongoing collaboration between Loudoun County Mental Health, Substance Abuse & Development Services, LCSO, and other local PDs and mental health agencies
- ❑ To provide a comprehensive point of access and assessment to individuals experiencing a psychiatric emergency
- ❑ Will increase access to evaluations during the time of crisis
- ❑ Will minimize the time law enforcement is pulled from patrol and community policing duties
- ❑ 190+ law enforcement officers in Loudoun have been CIT trained
- ❑ Since 2012, LCSO deputies have assisted 1,700+ persons suffering a behavioral crisis





Guest Speaker



Sgt. Michael Beatty
CRISIS INTERVENTION TEAM (CIT)
Trainer and Team Leader



- *The CIT model recognizes that certain situations require a specialized response.*
- *CIT officers are trained to identify when someone may be experiencing a mental health crisis and adapt strategies for those individuals.*
- *The training promotes the use of verbal de-escalation skills before using force when confronting a mental health crisis.*
- *The training has been proven to dramatically decrease the risk of injuries or death to both officers and people with mental illnesses.*





Guest Speaker



Detective Rick Myers **COMMERCIAL SEX CRIMES** and **SEX TRAFFICKING**



WHAT IS A COMMERCIAL SEX CRIME?

*A sexual act exchanged for money
or other item of value.*

WHAT IS SEX TRAFFICKING?

*The sexual exploitation of another person through
the use of threats, force, or violence.*



SEX TRAFFICKING IS A FORM OF HUMAN TRAFFICKING.





IRS Scam



AS TAX SEASON APPROACHES, THE LOUDOUN COUNTY SHERIFF'S OFFICE IS WARNING RESIDENTS:

- Scammers pose as IRS officials, requiring immediate payment via prepaid money cards or wire transfers.
- These scams come mostly via telephone calls and emails.
- Individuals are notified that they “*owe the IRS money, and must pay it now, or risk being arrested*”.
- The scammers use spoofing apps which allow them to use any telephone number to make it look like the call originates from a legitimate source. They also may use VoIP phone services which are very difficult to trace, as they are often routed internationally through servers located abroad.
- **DO NOT provide payment via prepaid money card or wire transfer. The IRS will not demand a tax debt be paid in this manner.**
- **DO NOT provide or confirm personal information to anyone who is making such demands or threats.**



IF YOU HAVE A LEGITIMATE TAX ISSUE, THE IRS WILL CONTACT YOU VIA MAIL





Open Burning Regulations: 4 PM Law



OPEN BURNING RESTRICTED FEBRUARY 15th – APRIL 30th

Between the hours of Midnight – 4 PM

Examples of open burning are:

- ❌ Open air fires of yard waste generated on site only
- ❌ Bonfires no more than 5' in diameter by 5' in height
- ❌ Warming barrels or burn barrels
- ❌ Campfires can be no larger than 3' diameter by 2' height, and used for cooking purposes only
- ❌ NO CLOSER than 50' from any structure.
- ❌ Must be attended by a competent person 18 years of age or older, AT ALL TIMES, with provisions for control available.
- ❌ Portable fire pits and chimineas are allowed and not considered open burning if operated within manufacturer's specifications.



Violations are subject to Class 1 Misdemeanor, a fine up to \$2,500, and up to 1 year in jail.

All such open burning MUST be reported to the LCFR-ECC at (703) 777-0637 PRIOR to ignition and when the fire is extinguished.

ALWAYS PROHIBITED: On a year round basis, open burning (to include campfires) in the town limits of Leesburg, Lovettsville, Middleburg, Purcellville, Round Hill, and all subdivisions throughout the county.





PROJECT CHILDSAFE



VA CODE § 18.2-56.2. ALLOWING ACCESS TO FIREARMS BY CHILDREN; PENALTY.

IT SHALL BE UNLAWFUL:

- To recklessly leave a loaded, unsecured firearm that endangers the life or limb of any child under the age of fourteen (14) [Class 3 misdemeanor].
- To allow a child under the age of twelve (12) to use a firearm except when the child is under the supervision of an adult [Class 1 misdemeanor].

“Adult” means: parent, guardian, *loco parentis* to the child, or a person 21 years or over who has permission from either of the three to supervise the child using a firearm.



PROJECT CHILDSAFE





Alert Loudoun / Reverse 911



Alert Loudoun 2.0

Information You Need Wherever You Are

Emergency Alerts, Traffic, Weather, County News

www.loudoun.gov/alert



REVERSE 911

- If you are a Verizon land line customer in Loudoun County, you do NOT need to register your home phone
- Any land line with a carrier other than Verizon, any cell phones, or VOIP should be registered if you would like to receive Reverse 911 notifications

Self-Registration Site:

<https://loudouncounty.onthealert.com/Terms/Index/?ReturnUrl=%2f>

Please note that REVERSE 911 provides emergency voice notifications ONLY, and is not affiliated with the Alert Loudoun system.

Welcome to the Loudoun County Reverse 911 Self-Registration Site



Loudoun County, VA
Office of Emergency Management



Emergency Preparedness
Citizen Notification System





REMINDERS



- Lock personal vehicles! Did you know that more vehicles are entered through unlocked doors than by force?
- Secure valuables in vehicle trunk (i.e. not in plain view)
- Close AND **LOCK** residential garages and doors
- Safely secure all firearms

LCSO NON-EMERGENCY NUMBER:

(703) 777-1021

