

# LCSO - WLS QUARTERLY COMMUNITY MEETING



Wednesday, July 27, 2016  
7:00 pm – 8:00 pm  
Round Hill Town Office



Western Loudoun Station  
23 Main St. 2<sup>nd</sup> Floor  
Round Hill, VA 20141  
Main # 571-258-3750





# LCSO Mission Statement



## SERVICE

## TECHNOLOGY

### LOUDOUN COUNTY SHERIFF'S OFFICE MISSION STATEMENT

The Loudoun County Sheriff's Office will strive to continuously improve safety and law enforcement services to all members of our community through the Step Up Strategy of improved service, technology, efficiency and professionalism.

We will work interactively with federal, state, and other local law enforcement authorities to vigorously and fairly enforce criminal laws by sharing capabilities, strategies and assets.

We will partner with community services groups and human services agencies to implement strategies that improve the quality of life for County residents, businesses and visitors.

Finally, we will engage our community through courteous and proactive outreach and communication, and work diligently to constantly improve our professionalism.

Every member of the Loudoun County Sheriff's Office is expected to contribute to the furtherance of this mission.

Michael L. Chapman  
Sheriff, Loudoun County



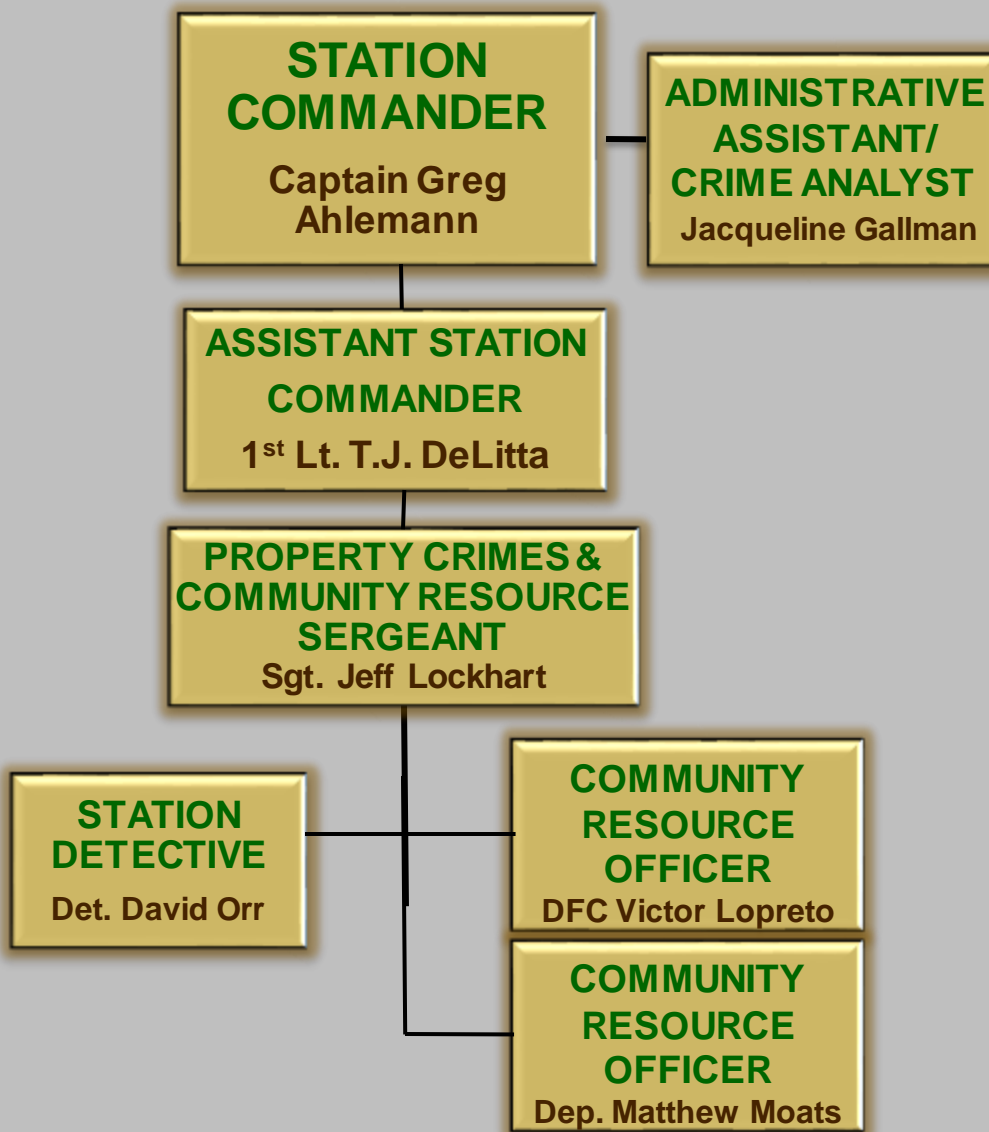
## EFFICIENCY

## PROFESSIONALISM





# WLS Organizational Chart







# CROs & Squad/Shift Schedules



**VICTOR LOPRETO**  
Community Resource Officer

571-246-5094

Victor.Lopreto@loudoun.gov



**MATTHEW MOATS**  
Community Resource Officer

571-528-7964

Matthew.Moats@Loudoun.gov

**Tuesday - Friday**  
**10:30 AM – 9:00 PM**

## **PATROL SQUADS:**

**A Days / A Nights**

**B Days / B Nights**

**Day Shift: 6:00am - 6:00pm**

**Night Shift: 4:00pm - 4:00am**

**7:00pm - 7:00am**





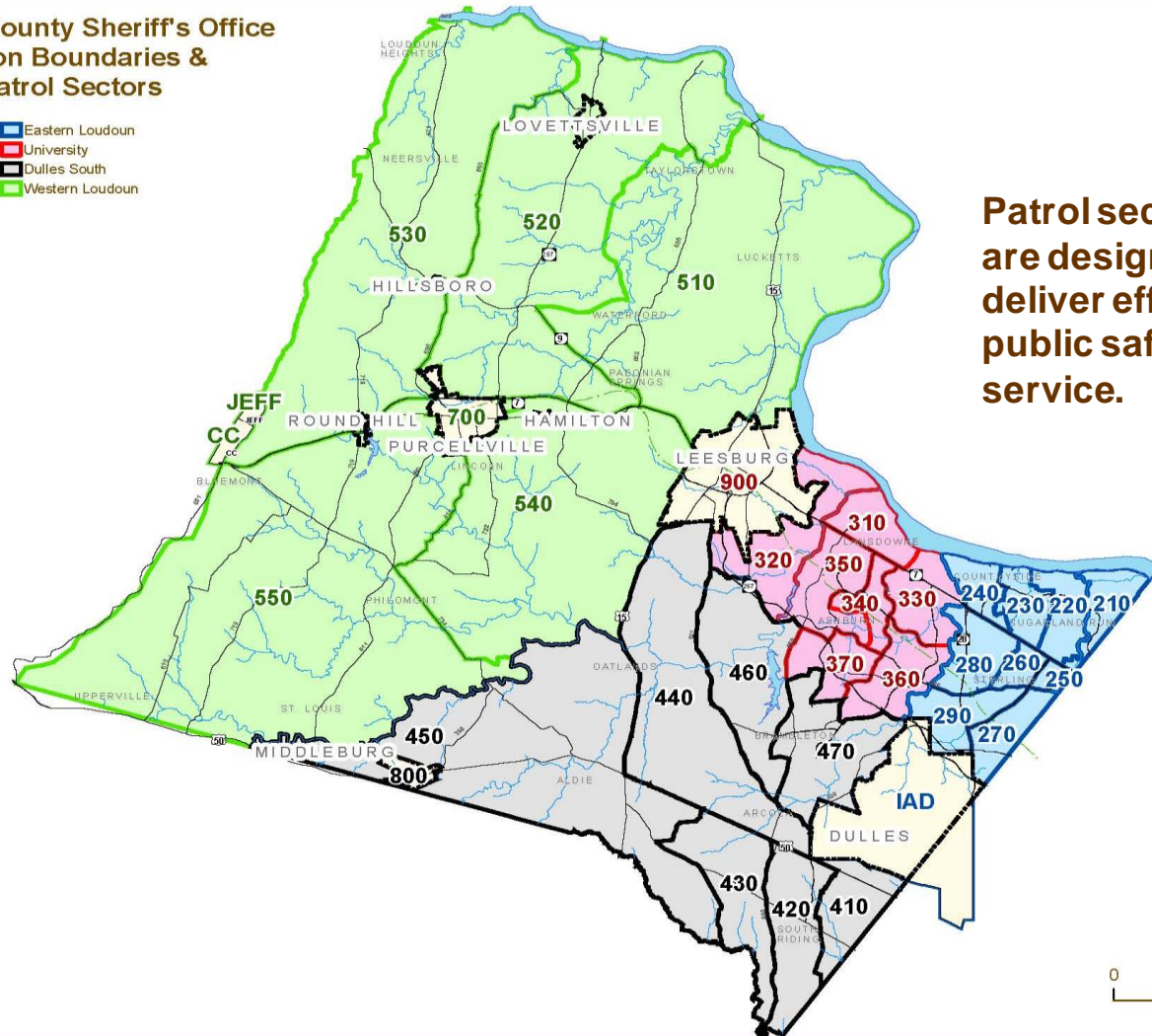
# Loudoun County Map

## w/ Station Boundaries / Sectors



### Loudoun County Sheriff's Office Station Boundaries & Patrol Sectors

- Eastern Loudoun
- University
- Dulles South
- Western Loudoun



**Patrol sectors  
are designed to  
deliver efficient  
public safety  
service.**



May 2010





# DEA Exhibit



## DEA National Touring Exhibit

### Drugs: Costs and Consequences

*Opening Eyes to the Damage Drugs Cause*

### A Multi-Agency Collaboration

*An interactive, visual, hands-on traveling exhibit*

**750 Miller Drive, SE, Suite F-1, Leesburg, Virginia**

**571-258-3888**

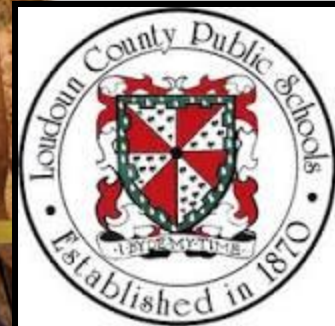


[www.drugexhibit.org](http://www.drugexhibit.org) or  
[www.deamuseum.org](http://www.deamuseum.org)

**January 12 - September 11, 2016**  
**Tuesday - Saturday, 10:00 AM - 5:00 PM**

**FREE  
ADMISSION**

**\*\*\* Parental Discretion is advised due to the intensity of some of the exhibits**







# NARCAN



## LCSO BEGINS PILOT PROGRAM TO EQUIP DEPUTIES WITH NASAL NARCAN

This program is part of the comprehensive approach of the Heroin Operations Team (HOT) initiative announced by Sheriff Chapman and Rep. Comstock in April 2015.

All of LCSO deputies assigned to western Loudoun have been trained in and equipped with the use of NARCAN, a life saving tool when seconds count.



### What is NARCAN?

*Nasal NARCAN is a nasal form of the drug naloxone that can reverse the effects of opiates such as heroin, oxycodone and hydrocodone.*





# Guest Speaker



## LCSO TEU Heroin Initiative

**Sgt. Paul Loconti**



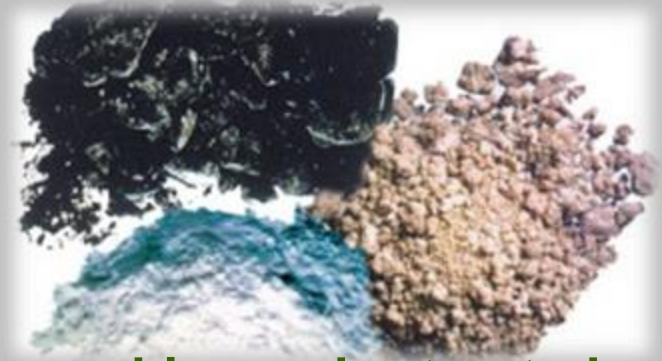




# What is Heroin?



## HEROIN



- An opiate (narcotic) drug processed from morphine and extracted from certain poppy plants.
- Heroin comes in a white or brownish powder, or a black sticky substance known as “black tar heroin.”
- Often “cut” with other drugs or substances such as sugar, powdered milk, lactose powder, inositol powder, vitamin B powders, or synthetic opiate substitutes like fentanyl, which can be up to 100 times more powerful than morphine.
- User is unaware how much actual heroin is being used, creating possibility of an overdose.





# Heroin can be Smoked, Snorted, or Cooked & Injected



**SMOKE**



**SNORT**



**INJECT**





# Heroin Use is a Growing Problem



National Institute  
on Drug Abuse



## National Overdose Deaths Number of Deaths from Heroin



Source: National Center for Health Statistics, CDC Wonder







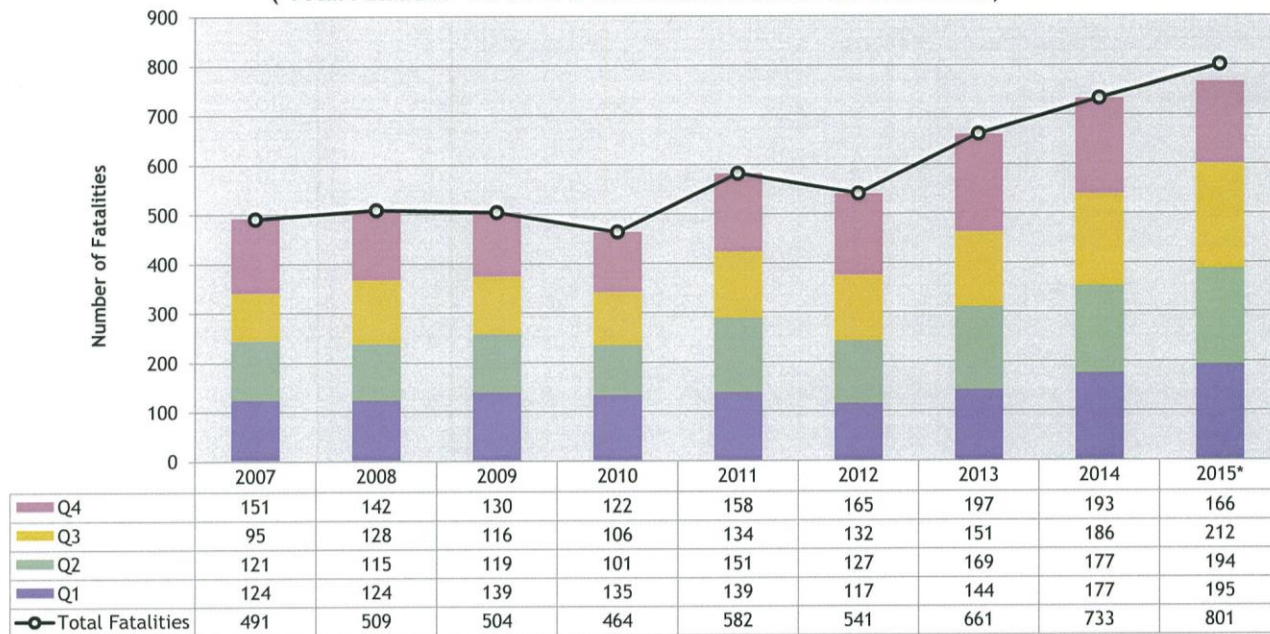
# Heroin Use is a Growing Problem



## ALL OPIOIDS

All opioids (heroin and/or one or more prescription opioids) make up 70-75% of all fatal drug overdoses annually in Virginia. Fatal opioid overdoses often have one or more benzodiazepines contributing to death (28.1%).

Total Number of Fatal Opioid Overdoses by Quarter and Year of Death, 2007-2015  
(‘Total Fatalities’ for 2015 is a Predicted Total for the Entire Year)



<sup>1</sup> 'All Opioids' include heroin, prescription opioids, and opioids unspecified

<sup>2</sup> 'Opioids Unspecified' are a small category of deaths in which the determination of heroin and/or one or more prescription opioids cannot be made due to specific circumstances of the death. Most commonly, these circumstances are a result of death several days after an overdose, in which the OCME cannot test for toxicology because the substances have been metabolized out of the decedent's system.





# Heroin's Pathway to Addiction



- Often begins after a person is legitimately prescribed narcotics for an injury or post surgery
- When the valid pain killer prescriptions run out, patients often find themselves addicted
- Heroin then becomes a less expensive and more accessible alternative
- Heroin is often “cut” with other drugs that often cause overdoses and sometimes result in death





# Heroin Facts



- Northern Virginia SOS is Baltimore/Washington DC; also New York and Philadelphia; and Chicago to West Virginia
- Travel by car to Washington D.C., Brunswick, MD, Frederick County, MD, Baltimore, MD, Prince Georges County, MD, Frederick County, VA, Jefferson County and Berkeley County, WV
- Wholesale Level Purity 60 - 80%
- Street Level Purity >60% (Northern Virginia) 2013-14; 50 -60% (MD)
- Street Level Price \$15-\$20 (VA); \$10-\$15 (MD)







# CONTACT INFORMATION



## CRIMINAL INVESTIGATIONS DIVISION

- Major Richard Fiano, [richard.fiano@loudoun.gov](mailto:richard.fiano@loudoun.gov)
- Capt. Eric Prugh, [eric.prugh@Loudoun.gov](mailto:eric.prugh@Loudoun.gov)
- Sgt. Paul Loconti, [paul.loconti@Loudoun.gov](mailto:paul.loconti@Loudoun.gov)
- Crime Tip Line (703) 555-1212
- Criminal Investigation Division (703) 555-1212





# PLANNING FOR THE FUTURE

## WESTERN LOUDOUN STATION

Although no public services are available at the current Western Loudoun Station location, it exists as an internal point of presence for Loudoun County Sheriff's Deputies to conduct roll call, follow-up investigations and access departmental information systems.

**Now Under Construction!**  
**Anticipated Opening Fall 2016!!**





# PLANNING FOR THE FUTURE

COMING  
SOON!!!







# PLANNING FOR THE FUTURE



Original Structure

**CURRENT PROGRESS!**

**JULY 2016**



July 2015



April 2016





# PLANNING FOR THE FUTURE

## SHERIFF'S STATIONS

- ★ Sally Port
- ★ Temporary Holding Facility
- ★ Booking Area
- ★ Roll Call Room
- ★ Deputy Workroom
- ★ Interview Rooms
- ★ Multi-purpose/ Community Meeting Rooms
- ★ Exercise & Locker Rooms
- ★ Evidence Processing & Storage

## SHERIFF'S STATION STAFFING

- ★ Station Commander
- ★ Assistant Station Commander
- ★ Customer Service Assistant
- ★ Administrative Assistant
- ★ Records/Crime Analyst
- ★ Station Deputy / Station Sergeant
- ★ Station Detective(s)
- ★ Community Resource Officers



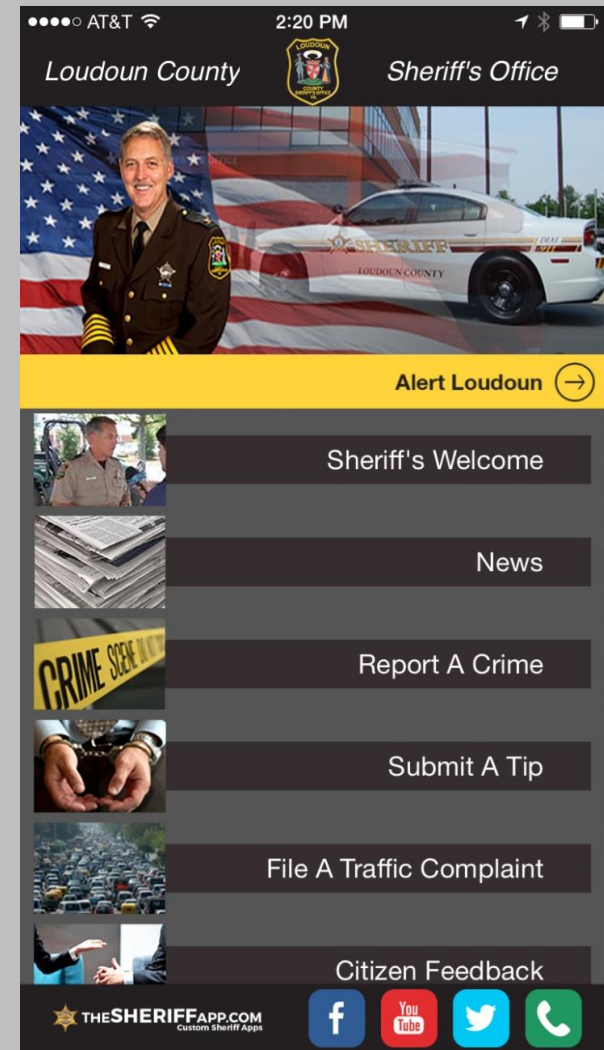


# LCSO App



## PUT CRIME INFORMATION AT YOUR FINGERTIPS

- Submit Crime Tips
- Report a Crime
- Make a Traffic Complaint
- Provide Citizen Feedback
- Learn the Latest Public Safety News Dispatched by the LCSO
- Receive Non-Emergency Community Notifications
- Learn of Upcoming Meetings & Events Held by the LCSO







# LCSO Website



## <https://sheriff.loudoun.gov>

***New & Improved Website Offers Innovative & Interactive Features  
in a More User Friendly Layout***

- **Report a Crime Online**
  - ✓ Report certain crimes such as larceny, ID theft & vandalism via the Internet.
- **Community Resource Directory**
  - ✓ Search community resources for health & human services in Loudoun County.
- **Case Follow-Up**
  - ✓ Victims can follow-up & inquire about status of cases via the website.
- **Find My Station**
  - ✓ A searchable map allowing residents to find their nearest station providing services such as fingerprinting & background Checks.
- **Traffic Mapping**
  - ✓ Traffic Incident Mapping Using Online Mapping Resources



**Find us on Facebook:**

**<https://www.facebook.com/loudounsheriff>**

**And on Twitter:**

**<https://twitter.com/loudounsheriff>**







# LCSO ONLINE REPORTING

WWW.SHERIFF.LOUDOUN.GOV



ALERT LOUDOUN



FIND MY STATION



CRIME MAPS & STATS



Report a Crime Online FAQ's

[Home](#) > Report A Crime

## Loudoun Sheriff's Office Online Crime Reporting System

### Report a Crime Online

Welcome to the Loudoun County Sheriff's Office Citizens Online Police Reporting System. **If this is an Emergency or a crime is in progress/just occurred, please call 911.** Using this online citizen crime reporting system allows you to submit a report without leaving your home; however, not every crime can be reported. Please confirm the following to find out if online citizen crime reporting is right for you:

- This is not an emergency?
- This incident occurred within Loudoun County?
- This is not a motor vehicle crash or hit and run?

If you answered yes to all of the above questions, you are ready to file your report online. Please make sure to turn off your pop-up blocking software before filing the report. If you answered no to any of the questions, please look at our [Online Crime Reporting Frequently Asked Questions](#) section. Upon completion of this report process you will:

- See the words: "Your online police report has been submitted" showing that your report is complete.
- Be given a temporary report number.
- Be able to print a copy of the temporary report to keep for your records.

#### Please Note:

- All cases filed using the Citizen's Online Crime Reporting System will be reviewed.
- Upon review, if further investigation of your case is needed, you may be contacted.
- **Filing a false police report is a CRIME.**

Anyone found to have submitted a false police report will be prosecuted under the authority of Virginia State Code §18.2-461, which shall be punishable as a Class 1 misdemeanor. Maximum possible penalty is one year in jail and/or \$2,500 fine. The Loudoun County Sheriff's Office Citizen's Online Crime Reporting System accepts the following types of incidents:

- Alcohol Violations
- Civil Disputes
- Credit Card Fraud
- Destruction of Property
- Fraud/False Pretenses
- Harassing Calls/Emails
- Identity Theft
- Theft
- Theft From Vehicle
- Lost Property
- Narcotics Activity
- Suspicious Event/Circumstances

[Please Click Here to Start Your Online Report](#)

[Please click here for Traffic Complaints](#)

[Please click here for Agency Questions or Concerns](#)

Incident Type	Definition	Examples
Alcohol Violation	When alcohol is consumed by a person under the age of 21, sold to a person under the age of 21 or purchased for a person under the age of 21.	Underage parties where persons less than 21 are consuming alcohol, locations where it is believed persons less than 21 are being sold alcohol or where persons are suspected of purchasing alcohol for those less than 21 years of age.
Civil Dispute	A disagreement between people or groups in which no criminal laws are broken.	Child custody disputes, neighbor disputes, common property disputes, etc.
Credit Card Fraud	Occurs when the credit card or credit card number(s) are used fraudulently without the consent of the cardholder.	Your wallet is lost or stolen and purchases are made on your credit card without your consent. An unauthorized purchase appears on your credit card statement from an online retailer.
Credit Card Theft	Taking or obtaining of credit card(s), or credit card number(s), with the intent to use them fraudulently.	Your credit card is stolen from your person or your credit card number is stolen by an unknown person.
Destruction of Property/Vandalism	The act of changing, modifying, defacing public or private property.	A vehicle was damaged on the exterior, but no parts were removed or entry was made into the vehicle.
Fraud/False Pretense	Fraudulently obtaining or selling goods and services.	Construction work intentionally undone. False internet products or returns. Non-delivery of tickets.
Harassing Phone Calls/Emails	Unwanted phone calls or e-mail of an annoying, harassing nature.	Immediate phone hang-ups, obscene language, etc. with no known suspects.
Identity Theft	Obtaining another's personal identifying information and using it to obtain credit, goods or services.	Someone obtains a credit card using your Social Security Number or obtains phone service using your personal information.
Larceny/Theft	Your property is taken without your permission.	Someone takes your cellular phone without permission. Lost property is not a theft.
Lost Property	Property is missing or lost.	This is not theft of property. Does not include lost passports, social security cards or driver's licenses.
Narcotics Activity	Suspected narcotics activity.	Includes suspected sales of narcotics, traffic indicating the sale of narcotics, consumption of illegal narcotics.
Shoplifting	Property is taken from a business without paying.	Someone steals consumable product from a business and leaves without paying. This includes concealment.
Suspicious Event/Circumstance	Suspicious activity that you wish for the Sheriff's Office to know about, but is not necessarily a crime.	Someone you do not know hangs out on your street corner for several hours every afternoon. Cars that you do not recognize are parked in front of your home and then leave at all hours of the night. Your neighbor has frequent visitors that only stay for a couple of minutes at a time.





# CopLogic



## Online Crime Reporting Statistics

### 2013 COPLOGIC STATISTICS:

Total Online Reports:	1671
Hours Saved:	3342
Cost Savings:	\$125,325

### 2014 COPLOGIC STATISTICS:

Total Online Reports:	2355
Hours Saved:	4710
Cost Savings:	\$176,625

### 2015 COPLOGIC STATISTICS:

Total Online Reports:	2266
Hours Saved:	4532
Cost Savings:	\$169,950

### Total Reports 2016



### 2016 COPLOGIC STATISTICS:

Total Online Reports:	1026
Hours Saved:	2052
Cost Savings:	\$76,950

From January 2013 – June 2016, approximately 7,318 incidents have been reported using the online reporting system [CopLogic](#). This has resulted in nearly 14,636 deputy hours saved, at a cost savings of approximately **\$548,850 – MORE THAN HALF A MILLION TAXPAYER DOLLARS – thus far – *in only three and a half years!!!***





CALL if You Can

**TEXT 911**

TEXT if You Can't



Beginning 03/01/2016, in all of Loudoun County and its incorporated towns.

If you are deaf, hard of hearing, or have a speech disability.

If you cannot speak due to injury or medical condition.



## HOW TO TEXT TO 911:

- ☐ Enter only 911 in the "To" field.
- ☐ Text should be short and include:
  - Location
  - Type of Emergency
- ☐ Be prepared to answer questions and follow Call Taker's instructions.
- ☐ Photos and videos cannot be sent to 911.

If you are in a threatening situation.

If your mobile reception signal is poor.

- ☐ Texts to 911 cannot include more than 1 recipient.
- ☐ TEXT 911 is available for:

❖ FIRE  
❖ MEDICAL  
❖ POLICE







# Alert Loudoun / Reverse 911



## Alert Loudoun 2.0

Information You Need Wherever You Are

Emergency Alerts, Traffic, Weather, County News

[www.loudoun.gov/alert](http://www.loudoun.gov/alert)



## REVERSE 911

- If you are a Verizon land line customer in Loudoun County, you do NOT need to register your home phone
- Any land line with a carrier other than Verizon, any cell phones, or VOIP should be registered if you would like to receive Reverse 911 notifications

Self-Registration Site:

<https://loudouncounty.onthealert.com/Terms/Index/?ReturnUrl=%2f>

*Please note that REVERSE 911 provides emergency voice notifications ONLY, and is not affiliated with the Alert Loudoun system.*

Welcome to the Loudoun County Reverse 911 Self-Registration Site



Loudoun County, VA  
Office of Emergency Management



Emergency Preparedness  
Citizen Notification System





# LOUDOUN COUNTY

## PART I & II CRIME STATS



### PART 1 CRIMES BY STATION AREA 2014 VS 2015 VS 2016

January 1 - June 30

Station	Total 2014	Total 2015	Total 2016	% of crime per station for 2016	# CHANGE FROM 2015 VS 2016	% change from 2015 vs 2016
Eastern Loudoun	701	598	588	46%	-7	-1%
University	360	230	250	20%	21	9%
Dulles South	288	293	299	23%	6	2%
Western Loudoun	90	116	133	10%	17	15%
Other	1	1	0	0%	-1	-100%
Total	1440	1238	1270	100%	36	3%

### PART 2 CRIMES BY STATION AREA 2014 VS 2015 VS 2016

January 1 - June 30

Station	Total 2014	Total 2015	Total 2016	% of crime per station for 2016	# CHANGE FROM 2015 VS 2016	% change from 2015 vs 2016
Eastern Loudoun	1111	987	882	39%	-105	-11%
University	638	679	701	31%	22	3%
Dulles South	327	362	424	19%	62	17%
Western Loudoun	207	278	258	11%	-20	-7%
Other	3	0	3	0%	3	N/C
Total	2286	2306	2268	100%	-38	-2%





# WESTERN LOUDOUN PART I & II CRIME STATS



[Includes 700]

## WESTERN LOUDOUN CRIME STATS PART I

1<sup>st</sup> & 2<sup>nd</sup> qtr 2015 vs 1<sup>st</sup> & 2<sup>nd</sup> qtr 2016

CRIME TYPE	2015	2016	CHANGE 2015 vs 2016	% Inc / Decr
Aggravated Assault	2	10	+8	+400%
Auto Theft	12	8	-4	-33.33%
Burglary	13	19	+6	+45.16%
Larceny	71	89	+18	+25.35%
Rape	2	7	+5	+250%
Robbery	4	0	-4	-100%
Homicide	0	0	0	--

## WESTERN LOUDOUN CRIME STATS PART I

1<sup>st</sup> & 2<sup>nd</sup> qtr 2015 vs 1<sup>st</sup> & 2<sup>nd</sup> qtr 2016

CRIME TYPE	2015	2016	CHANGE 2015 vs 2015	% Inc / Decr
Destruction of Property	73	64	-9	-12.33%
DIP	10	12	+2	+20%
Disorderly Conduct	0	4	+4	--
DUI	31	40	+9	+29.03%
Liquor Violation	6	4	-2	-33.33%
Narcotics Related	54	60	+6	+11.11%
Runaway	12	6	-6	-50%
Sex Assault	4	2	-2	-50%
Simple Assault	59	59	0	0%
Weapons Violation	6	7	+1	+16.67%

The Western Loudoun deputies serve a population of approximately 50,071.

There were approximately 12,000 calls for service in the first half of 2016 for this Service Area alone.







# BURGLARY



## Lovettsville Community Pool



**SUSPECT VEHICLE**

On Wednesday, July 13, 2016, shortly after midnight, two unknown white male subjects (late teens to early 20's) climbed a gated and locked fence surrounding the pool area, and then entered the pool house and concession stand at the LOVETTSVILLE COMMUNITY POOL, owned by Loudoun County Parks, Recreation, and Community Services, at 57 E. Broad Way, Lovettsville, through an unlocked window. A third unknown white male subject waited outside in the 4 door sedan style vehicle pictured here. The subjects removed \$261 worth of candy and soda from the premises.





# CRISIS INTERVENTION



**Loudoun County's first Crisis Intervention Team [CIT]  
Assessment Center opened October 1<sup>st</sup>  
Shenandoah Building in Leesburg  
102 Heritage Way, N.E.  
Open Daily 7 a.m. to 11:00 p.m.**

- ❑ Funded through a grant by the VA Dept. of Behavioral & Developmental Services
- ❑ An ongoing collaboration between Loudoun County Mental Health, Substance Abuse & Development Services, LCSO, and other local PDs and mental health agencies
- ❑ To provide a comprehensive point of access and assessment to individuals experiencing a psychiatric emergency
- ❑ Will increase access to evaluations during the time of crisis
- ❑ Will minimize the time law enforcement is pulled from patrol and community policing duties
- ❑ 190+ law enforcement officers in Loudoun have been CIT trained
- ❑ Since 2012, LCSO deputies have assisted 1,700+ persons suffering a behavioral crisis







# MOVE OVER – It's the LAW!!







# TRAFFIC STOPS



- Turn your vehicle's dome light on
- Hands 10 & 2 – Keep your hands visible on the steering wheel in plain sight, until the officer says it is okay to reach for your license and registration, and concealed handgun permit, if applicable
- Once the officer advises it is okay to reach for your license and registration, **MOVE SLOWLY**
- Let the officer know you have a firearm on your person and its location



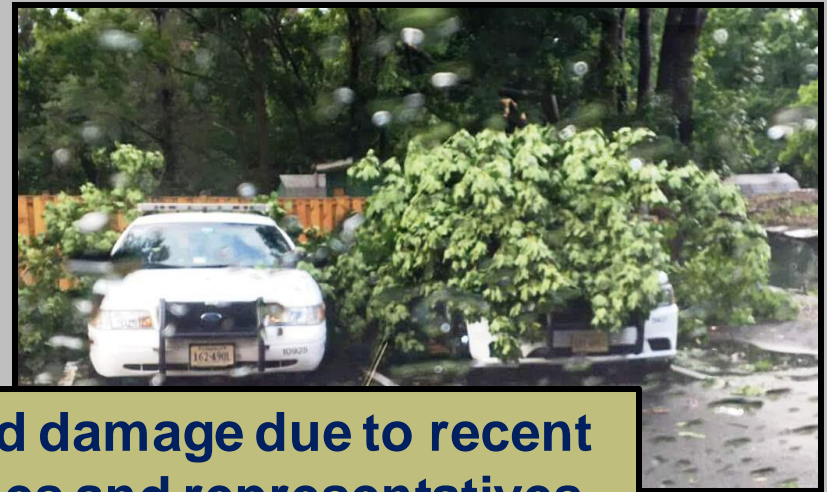
## What to Expect During a Traffic Stop

**“Officer, I want you to know I have a concealed handgun permit and currently have one on my person/in my glove box. How would you like me to proceed?”**





# STORM DAMAGE



**Western Loudoun suffered damage due to recent storms which kept deputies and representatives from VDOT busy clearing roadways.**







# POKÉMON GO



- POKÉMON GO is a mobile game which combines the digital world and the real world by having players search for hidden digital Pokémon figures that have been placed on a real world map.
- The game is GPS based and the system randomly selects locations without regard to what is actually at that location.
- Pokémon can appear anywhere outside or inside of buildings.
- Residents need to be aware that they may observe people walking on their property, or parked nearby, in an effort to “catch” a Pokémon.
- There have been reports of assaults and robberies of mobile devices by illegitimate players.
- One gamer ran into a police car when he was playing while driving.
- Gamers are warned not to bury their heads in their phones. Be aware of your surroundings at ALL times.





# National Night Out

## 33<sup>RD</sup> NATIONAL NIGHT OUT

August 2, 2016

6:00 – 8:30/9 pm

In Western  
Loudoun:  
Middleburg\* and  
Purcellville\*



POLICE • COMMUNITY PARTNERSHIPS

*Get outside, meet your neighbors, start a neighborhood watch program in your community and talk to the deputies and officers that patrol the streets on which you live.*

## WHAT IS NATIONAL NIGHT OUT?

The purpose of National Night Out is to build strong partnerships between the police and communities and to promote drug prevention and awareness, as well as to promote crime awareness programs such as Neighborhood Community Watch Groups.

**\*Please contact the appropriate PD for specific information regarding times/schedule of events**







# Upcoming Events



## 5<sup>th</sup> ANNUAL CHILD SAFETY and FORENSICS DAY **FREE EVENT!**

August 6, 2016, 12:00 – 4:00 p.m. VILLAGE OF LEESBURG



Sponsored by:  
Loudoun County Sheriff's Office,  
Leesburg PD, and the DEA



To convey vital safety information to  
parents and children through a family  
friendly event.

Moonbounce  
Live DJ Entertainment  
Raffle, Giveaways, Prizes  
LCSO vehicles  
Dive truck & boat  
Crime Scene Unit  
Mobile Command Unit  
Armored Rescue Unit

Leesburg Police, Fire & Rescue  
FBI Community Outreach Division  
DMV Ident-A-Kid program

**Featuring:**





# REMINDERS



- **LOCK** personal vehicles! Did you know that more vehicles are entered through unlocked doors than by force?
- Secure valuables in vehicle trunk (i.e. not in plain view)
- Close AND **LOCK** residential garages, doors, and outbuildings
- Safely secure all firearms

**LCSO NON-EMERGENCY NUMBER:**

**(703) 777-1021**

