



Briefing

# Dulles South Station Quarterly Community Report



February 23, 2015





# Agenda

- Introductions
- Dulles Community Outreach Initiative
- LCSO Website/Online Reporting
- Alarm Statistics
- Summarized Part 1 / Part 2 Crime Data
- Significant Events
- Safe Vehicle Operations during inclement weather
- Cold Weather Fire Prevention
- Conclusion / Group Discussion





# **The Dulles South Station leadership team directs all public safety activities in the region**



- **Captain Eric Prugh, Commander of Dulles South**  
**Office: (703) 737-8336**
- **1<sup>st</sup> Lieutenant Russ Wall, Assistant Commander**  
**Office: (571) 258-3224**
- **Dulles Safety Center**  
**Main Number: (571) 258-3200**
- **Non Emergency Number: (703) 777-1021**





# The Dulles South Station employs a wide array of staff and public safety services to achieve its mission



## Station Enforcement Team

- Property Crimes Sergeant - Sgt. Jeff Lockhart
- Community Resource Deputy- DS Roy Ortutay
- Crime Prevention Specialist- Deputy N. Payne
- Station Detectives- Detective Tyler Brown
- Station Detectives- Detective Ryan Schmidt (Effective January 29<sup>th</sup>)

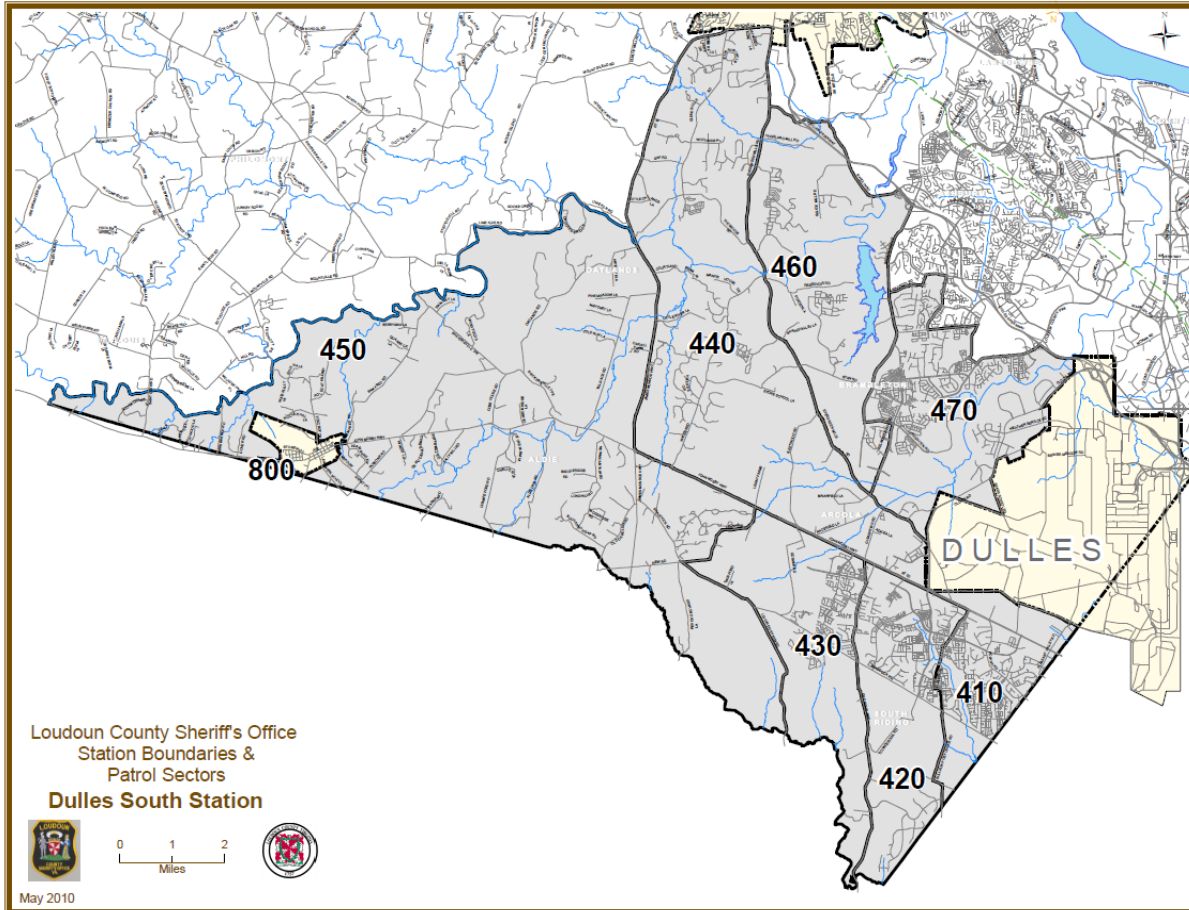
## Mission

- Streamline information / working more efficiently
- Improve upon community education and investigative tactics
- Prevent and solve crime





# The Dulles South Patrol Sectors are designed to deliver efficient public safety service



## INCLUDING:

- The Town of Middleburg
- Dulles South Population approx. 87,268
- Deputies Patrolling 115.5 Sq. Miles
- Calls for Service Jan 1 – Dec 31, 2014 34,067

**Dulles South Sectors , 410, 420, 430, 440, 450, 460 AND 470**





# LCSO Website

## Sheriff.Loudoun.Gov

### *Website Offers Innovative & Interactive Features in a More User Friendly Layout*

- Report a Crime Online
  - ✓ Report Certain Crimes Like Larceny, ID Theft & Vandalism via the Internet.
- Community Resource Directory
  - ✓ Search Community Resources for Health and Human Services in Loudoun County.
- Case Follow-Up
  - ✓ Victim's can Follow-up & Inquire on Status of Case via the Website.
- Find My Station
  - ✓ A Searchable Map allowing Residents to find their nearest Station providing
  - ✓ Services such as Fingerprinting & Background Checks.







# LCSO ONLINE REPORTING

## WWW.SHERIFF.LOUDOUN.GOV



ALERT LOUDOUN



FIND MY STATION



CRIME MAPS & STATS



Report a Crime Online FAQ's

[Home](#) > Report A Crime

## Loudoun Sheriff's Office Online Crime Reporting System

### Report a Crime Online

Welcome to the Loudoun County Sheriff's Office Citizens Online Police Reporting System. **If this is an Emergency or a crime is in progress/just occurred, please call 911.** Using this online citizen crime reporting system allows you to submit a report without leaving your home; however, not every crime can be reported. Please confirm the following to find out if online citizen crime reporting is right for you:

- This is not an emergency?
- This incident occurred within Loudoun County?
- This is not a motor vehicle crash or hit and run?

If you answered yes to all of the above questions, you are ready to file your report online. Please make sure to turn off your pop-up blocking software before filing the report. If you answered no to any of the questions, please look at our [Online Crime Reporting Frequently Asked Questions](#) section. Upon completion of this report process you will:

- See the words: "Your online police report has been submitted" showing that your report is complete.
- Be given a temporary report number.
- Be able to print a copy of the temporary report to keep for your records.

#### Please Note:

- All cases filed using the Citizen's Online Crime Reporting System will be reviewed.
- Upon review, if further investigation of your case is needed, you may be contacted.
- **Filing a false police report is a CRIME.**

Anyone found to have submitted a false police report will be prosecuted under the authority of Virginia State Code §18.2-461, which shall be punishable as a Class 1 misdemeanor. Maximum possible penalty is one year in jail and/or \$2,500 fine. The Loudoun County Sheriff's Office Citizen's Online Crime Reporting System accepts the following types of incidents:

- Alcohol Violations
- Civil Disputes
- Credit Card Fraud
- Destruction of Property
- Fraud/False Pretenses
- Harassing Calls/Emails
- Identity Theft
- Theft
- Theft From Vehicle
- Lost Property
- Narcotics Activity
- Suspicious Event/Circumstances

[Please Click Here to Start Your Online Report](#)

[Please click here for Traffic Complaints](#)

[Please click here for Agency Questions or Concerns](#)

Incident Type	Definition	Examples
Alcohol Violation	When alcohol is consumed by a person under the age of 21, sold to a person under the age of 21 or purchased for a person under the age of 21.	Underage parties where persons less than 21 are consuming alcohol, locations where it is believed persons less than 21 are being sold alcohol or where persons are suspected of purchasing alcohol for those less than 21 years of age.
Civil Dispute	A disagreement between people or groups in which no criminal laws are broken.	Child custody disputes, neighbor disputes, common property disputes, etc.
Credit Card Fraud	Occurs when the credit card or credit card number(s) are used fraudulently without the consent of the cardholder.	Your wallet is lost or stolen and purchases are made on your credit card without your consent. An unauthorized purchase appears on your credit card statement from an online retailer.
Credit Card Theft	Taking or obtaining of credit card(s), or credit card number(s), with the intent to use them fraudulently.	Your credit card is stolen from your person or your credit card number is stolen by an unknown person.
Destruction of Property/Vandalism	The act of changing, modifying, defacing public or private property.	A vehicle was damaged on the exterior, but no parts were removed or entry was made into the vehicle.
Fraud/False Pretense	Fraudulently obtaining or selling goods and services.	Construction work intentionally undone. False internet products or returns. Non-delivery of tickets.
Harassing Phone Calls/Emails	Unwanted phone calls or e-mail of an annoying, harassing nature.	Immediate phone hang-ups, obscene language, etc. with no known suspects.
Identity Theft	Obtaining another's personal identifying information and using it to obtain credit, goods or services.	Someone obtains a credit card using your Social Security Number or obtains phone service using your personal information.
Larceny/Theft	Your property is taken without your permission.	Someone takes your cellular phone without permission. Lost property is not a theft.
Lost Property	Property is missing or lost.	This is not theft of property. Does not include lost passports, social security cards or driver's licenses.
Narcotics Activity	Suspected narcotics activity.	Includes suspected sales of narcotics, traffic indicating the sale of narcotics, consumption of illegal narcotics.
Shoplifting	Property is taken from a business without paying.	Someone steals consumable product from a business and leaves without paying. This includes concealment.
Suspicious Event/Circumstance	Suspicious activity that you wish for the Sheriff's Office to know about, but is not necessarily a crime.	Someone you do not know hangs out on your street corner for several hours every afternoon. Cars that you do not recognize are parked in front of your home and then leave at all hours of the night. Your neighbor has frequent visitors that only stay for a couple of minutes at a time.





# Loudoun County Coplogic Online Report Cost Savings



Estimated Time Savings per Report if Taken by a Patrol Deputy	Estimated Cost per Report if Taken by a Patrol Deputy (\$)
2 Hours	\$75.00

County Estimated Year to Date Reports (Jan 1 <sup>st</sup> – Dec 31, 2014)	Year to Date Hours Saved	Year to Date Total Savings (\$)
2,355	4710.00 Hours	\$176,625

**\* Note:** Theft from Vehicle, Suspicious Events, and Fraud/False Pretense are the most commonly reported online offenses.







# Alarm Calls by Station Area

## January 1-December 31, 2014



	ALMB	ALMC	ALMR	TOTAL
EASTERN LOUDOUN	136	1323	858	2317
UNIVERSITY	75	494	1305	1874
<b>DULLES SOUTH</b>	<b>25</b>	<b>597</b>	<b>2284</b>	<b>2906</b>
WESTERN LOUDOUN	3	99	683	785
MIDDLEBURG	11	46	15	72
PURCELLVILLE	10	162	54	226
LEESBURG	0	45	1	46
ENTIRE COUNTY	260	2766	5200	8226

**ALMB-Bank    ALMC-Commercial    ALMR-Residential**





# Part One Crime Stats by Years and Crimes by Stations Area

## PART 1 CRIME STATS 2012 VS 2013 VS 2014

January 1 - December 31

Crime Type	2012	2013	2014	2013 VS. 2014 #CHANGE	2013 VS. 2014 % CHANGE
HOMICIDE	1	1	3	2	200%
AGG. ASSAULT	127	106	115	9	8%
RAPE	67	56	38	-18	-32%
ROBBERY	38	39	46	7	18%
BURGLARY	318	227	178	-49	-22%
AUTO THEFT	125	101	102	1	1%
LARCENY	2587	2446	2331	-115	-5%
Total	3263	2976	2813	-163	-5%

## PART 1 CRIMES BY STATION AREA 2012 VS 2013 VS 2014

January 1 - December 31

Station	Total 2012	Total 2013	Total 2014	% of crime per station for 2014	# CHANGE FROM 2013 VS 2014	% change from 2013 vs 2014
Eastern Loudoun	1444	1401	1354	48%	-47	-3%
University	814	649	666	24%	17	3%
Dulles South	674	644	593	21%	-51	-8%
Western Loudoun	330	281	199	7%	-82	-29%
Other	1	1	1	0%	0	0%
Total	3263	2976	2813	100%	-163	-5%





## Part Two Crimes by Station Area 2012 VS 2013 VS 2014

### PART 2 CRIMES BY STATION AREA 2012 VS 2013 VS 2014 January 1 - December 31

Station	Total 2012	Total 2013	Total 2014	% of crime per station for 2014	# CHANGE FROM 2013 VS 2014	% change from 2013 vs 2014
Eastern Loudoun	2699	2424	2034	46%	-390	-16%
University	1587	1386	1243	28%	-143	-10%
Dulles South	892	718	747	17%	29	4%
Western Loudoun	558	519	425	9%	-94	-18%
Other	3	4	1	0%	-3	-75%
Total	5739	5051	4450	100%	-601	-12%





# Dulles South Part One and Two Crimes for 2014

## Part 1 Crimes for Dulles South Service Area January 1, 2014 - December 31, 2014

SECTORS	HOMICIDE	ASSAULT	ROBBERY	RAPE	LARCENY	AUTO THEFT	BURGLARY	TOTAL
410	0	3	0	0	57	1	7	68
420	0	5	2	2	117	5	10	141
430	1	3	1	1	146	3	5	160
440	0	2	1	1	46	2	4	56
450	0	0	0	1	14	1	2	18
460	0	2	0	0	21	1	1	25
470	0	3	1	2	100	6	12	124
800	0	0	0	0	0	0	1	1
<b>TOTAL</b>	<b>1</b>	<b>18</b>	<b>5</b>	<b>7</b>	<b>501</b>	<b>19</b>	<b>42</b>	<b>593</b>

## Part 2 Crimes for Dulles South Service Area January 1, 2014 - December 31, 2014

SECTORS	Simple Assault	Dest. of Prop.	DUI	DIP	Narc. Related	Liquor Law Viol.	Peeping Tom	Sex Assault	Weapon Viol.	Dis. Conduct	Runaway	TOTAL
410	30	28	11	3	16	0	0	1	1	2	1	93
420	51	44	12	4	26	4	0	4	3	4	7	159
430	37	44	15	7	8	5	0	1	1	1	7	126
440	10	9	4	3	7	2	0	1	2	0	2	40
450	8	7	6	3	6	0	0	0	2	0	0	32
460	6	23	5	2	7	3	0	0	0	0	0	46
470	64	102	8	15	29	6	0	1	2	4	18	249
800	0	0	0	1	1	0	0	0	0	0	0	2
<b>TOTAL</b>	<b>206</b>	<b>257</b>	<b>61</b>	<b>38</b>	<b>100</b>	<b>20</b>	<b>0</b>	<b>8</b>	<b>11</b>	<b>11</b>	<b>35</b>	<b>747</b>





# SIGNIFICANT EVENTS



**ARMED ROBBERY:** Occurred on May 8, on Parkland Farms Terrace, an unknown Subject brandished a weapon obtaining personal property. The case is believed to be drug related.

**ARMED ROBBERY:** Occurred on Thursday Oct. 2nd, at about 7PM at the Croson's store in the 42300 block of John Mosby Highway, Chantilly, Va. The subject is described as an Hispanic or light-skinned Black male, wearing a fishing style hat with a drawstring, a gray hooded sweatshirt and blue jeans, displaying a firearm. The subject obtained cash from an employee, and a cell phone from a customer in the store.

**DESTRUCTIONS OF PROPERTY:** There have been 17 reported cases of Graffiti in the Brambleton community that occurred between July - October 2014, some of which uses language that disparages a specific culture. A LCSO Community Resource Deputy is assigned to the area and is working with the Brambleton HOA for community outreach and a reward has been established to obtain information on the cases.

**COMMERCIAL BURGLARIES:**

On September 9th, Chantilly Mulch located at 42531 John Mosby Hwy was entered by smashing out a window pane. A cash box containing money was stolen.

On September 12-13, Jiffy Lube at 42559 John Mosby Hwy was entered by breaking out a window pane. An ACER Laptop and a green impact tool gun were taken.

On September 13, Chantilly Mulch located at 42531 John Mosby Hwy was entered by smashing out a window pane. While inside, several desk drawers and cabinets were ransacked but nothing obtained.

On September 19, Cerrito's Carry Out located at 43137 John Mosby Hwy was entered by breaking out a window overnight and removing beer.





# LCSO PHONE SCAM



## LCSO Warns Residents of Ongoing Scam

IRS scams!! (Upcoming tax season)  
Phone Scams







# Money Card Scam Alert



## WARNING Money Card Scams

Scammers are claiming to be from the IRS, local law enforcement, and other government agencies. They convince victims they owe fines and could face arrest. In most of the cases the victims are asked to obtain money cards.

### Protect Yourself!



Be Suspicious of callers who demand immediate payment for any reason.



Never provide personal or financial information to anyone who e-mails or calls you unsolicited.



Don't wire money, provide debit or credit card numbers or Green-Dot MoneyPak or Reloadit card numbers to someone you don't know.



Remember utility companies and government agencies will not contact you demanding immediate payment by money cards.

If you were of a victim of a scam, please call 703-777-1021

Emergency: 911

<http://sheriff.loudoun.gov>



"When in doubt, have us check it out!"  
Loudoun Sheriff Mike Chapman



## ALERTA

### Estafas por tarjetas de dinero

Los estafadores dicen ser del IRS, de autoridades policiales locales y de otras agencias del gobierno. Ellos convencen a las víctimas de que adeudan multas y que podrían ser arrestadas. En la mayoría de los casos piden a las víctimas que compren tarjetas de dinero.

### ¡Protéjase!



Suspeche de las personas que llaman y demandan el pago inmediato, por cualquier motivo.



Nunca revele información personal o financiera a ninguna persona que lo llame o le envíe un mail, que usted no haya solicitado.



Nunca envíe dinero, proporcione los números de sus tarjetas de débito o crédito, o números de "Green-Dot MoneyPak" o "Reload", a ninguna persona que usted no conozca.



Recuerde que las empresas de servicio público y las agencias gubernamentales no le contactan exigiendo el pago inmediato por tarjetas de dinero.

Si usted fue víctima de una estafa, por favor llame al 703-777-1021

Emergencia: 911

<http://sheriff.loudoun.gov>



"En caso de duda, deje que nosotros investiguemos!"  
Sheriff Mike Chapman del Condado de Loudoun





# Safe Vehicle Operations During Inclement Weather



- Plan ahead! Stay informed-get a periodic weather report.
- Know the limitations of your vehicle (2wd, 4wd, AWD).
- Strongly consider having an emergency kit with blanket, flashlight, extra phone charger cord, road flares, tow strap, boots, socks, and a 2nd winter coat.
- Go ahead and ask yourself the question: "Who will I call when my car is stuck?"
- Weigh the risk to yourself, your family, and your neighbors if the road traction conditions exceed the capacity of your vehicle/tires.





# Safe Vehicle Operations During Inclement Weather

## (Cont.)



- Snow Plow Status on maintained roadways— visit VDOT website at <http://vdotplows.org/>
- Planned/Reported Lane Closures, Reported Incidents- Use Virginia 511, <http://www.511virginia.org> or calling 511 from a phone.
- Problems on VDOT roads may be reported through our website at the following link <http://www.virginiadot.org/travel/citizen.asp> or by calling 1-800-FOR-ROAD.





# Cold Weather Fire Prevention



## Loudoun County Fire Rescue Staff





# REMINDER



- Lock personal vehicles
- Secure valuables in vehicle trunk
- Close/Lock residential garages and doors
- LCSO Non-Emergency Number (703)777-1021
- Safely secure all firearms





# DMV to Go



**Dulles South Public Safety Center**  
25216 Loudoun County Pkwy. Chantilly, VA 20152  
**February 18, 2015**  
**9AM - 4PM**

With the latest technology, the wireless office on wheels offers all DMV services:

- ▶ Apply for or renew your ID card – available for adults and children.
- ▶ Apply for or renew your driver's license – take road and knowledge tests; get your picture taken. Reinstatement driving privileges.
- ▶ Get a copy of your driving record.
- ▶ Obtain vehicle titles, license plates, decals, transcripts.
- ▶ Order disabled parking placards or plates.
- ▶ Recently moved? Stop in to update your address on your DMV record. At the same time you can update your voter registration address and organ donor status.
- ▶ Request a Personal Identification Number (PIN) to set up a myDMV account – receive DMV notices via email or phone; conduct secure transactions on the DMV website, [www.dmvNOW.com](http://www.dmvNOW.com).
- ▶ Search for other state services through a Virginia Internet portal.
- ▶ And more!

Show proof of your veteran status to receive discounts from retailers and restaurants.

**Apply for your Veterans ID card**

To apply, bring Virginia driver's license or ID card and your DD 214 to DMV.

Department of  Motor Vehicles

## DMV 2 Go

### April 23, 2015

### 9:00 AM – 4:00PM







# Questions / Discussion

