



Dear Leesburg Resident,

I wish everyone a Merry Christmas and a happy and peaceful holiday season. Santa came to visit at the Leesburg Christmas and holiday parade on December 8th (pictured below).



Discharge of Firearms

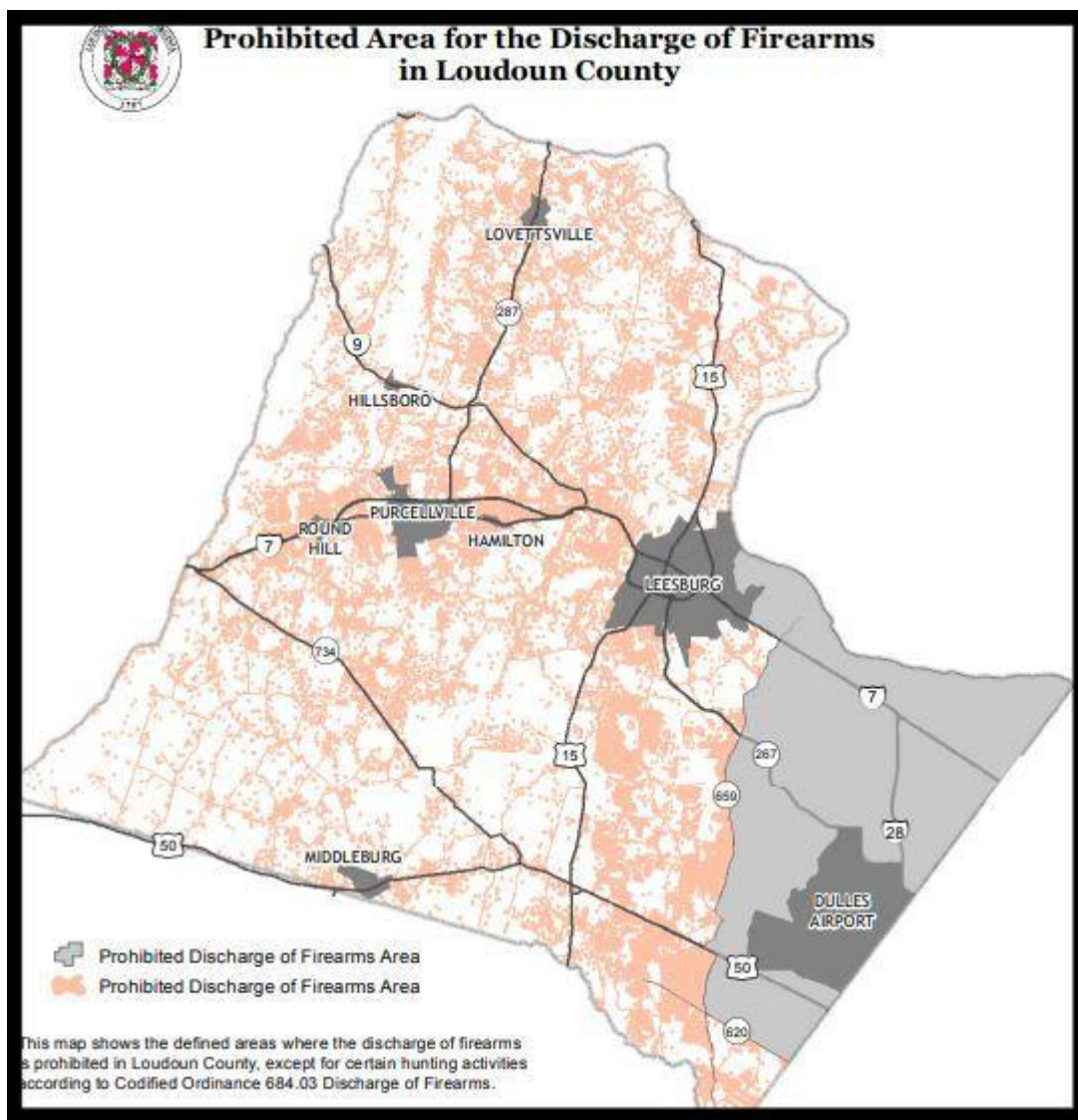
Starting with the Willowsford homes that were hit by reckless gunfire from a backyard shooting range in May, we have had more incidents of recklessly discharged firearms (with 8 homes hit) this summer than we've seen in a comparable time frame over the last decade. Something has changed. In part, too many homes have been approved and built in the transition and rural policy areas, bringing suburban-style development into areas that used to be rural. This summer, eight homes were hit. When the Board reviews the draft Envision Loudoun/ Loudoun 2040/Draft Comprehensive Plan in the spring of 2019, the Board will have a real challenge if it wants to avoid bringing together conflicting uses, like outdoor shooting ranges, on the one hand, and suburban-style development, wedding venues, breweries and wineries, on the other hand.

At the December 4th Board business meeting, staff provided the Discharge of Firearms Working Group's recommendations, as requested by the Board at its June 21st meeting. The working group made the following recommendations:

- No changes be made to the existing boundary, with the understanding that the discharge of firearms is already prohibited within 100 yards any public park or school or building with a current occupancy permit, or within 50 yards of primary and secondary roads.
- Based on the limitations of the occupancy permit records, pursue alternative language that does not rely on occupancy permits and would include the newly suggested language: The discharge of firearms is prohibited within 100 yards of a regularly occupied structure, or a structure intended for occupancy, unless the owner or authorized agent has given permission.
- Additional outreach and education on the topic of the safe discharge of firearms. This includes publishing existing training opportunities (e.g., Lovettsville Game Club, Izaak Walton League, etc.) on the County website.
- Amend the codified ordinance to include "*the hunting with a firearm*" and discharge of firearms is prohibited within 100 yards of any public park or school.
- That any revisions and/or new County zoning regulations should provide and allow for new commercial indoor and outdoor shooting ranges that are constructed to meet industry safety standards to be permitted, providing residents with safe and regulated facilities for shooting and target practices.

The Board accepted the Discharge of Firearms Working Group's specific recommendations listed above and approved the following additional motions for discussion and possible action at the February 2019 Transportation and Land Use Committee:

- Disseminate the interactive map to the public of the prohibited area for discharge of firearms (please see the map below). You will notice the discharge of firearms is prohibited in the Town of Leesburg pictured in gray but this does not include the Joint Land Management Area (JLMA).

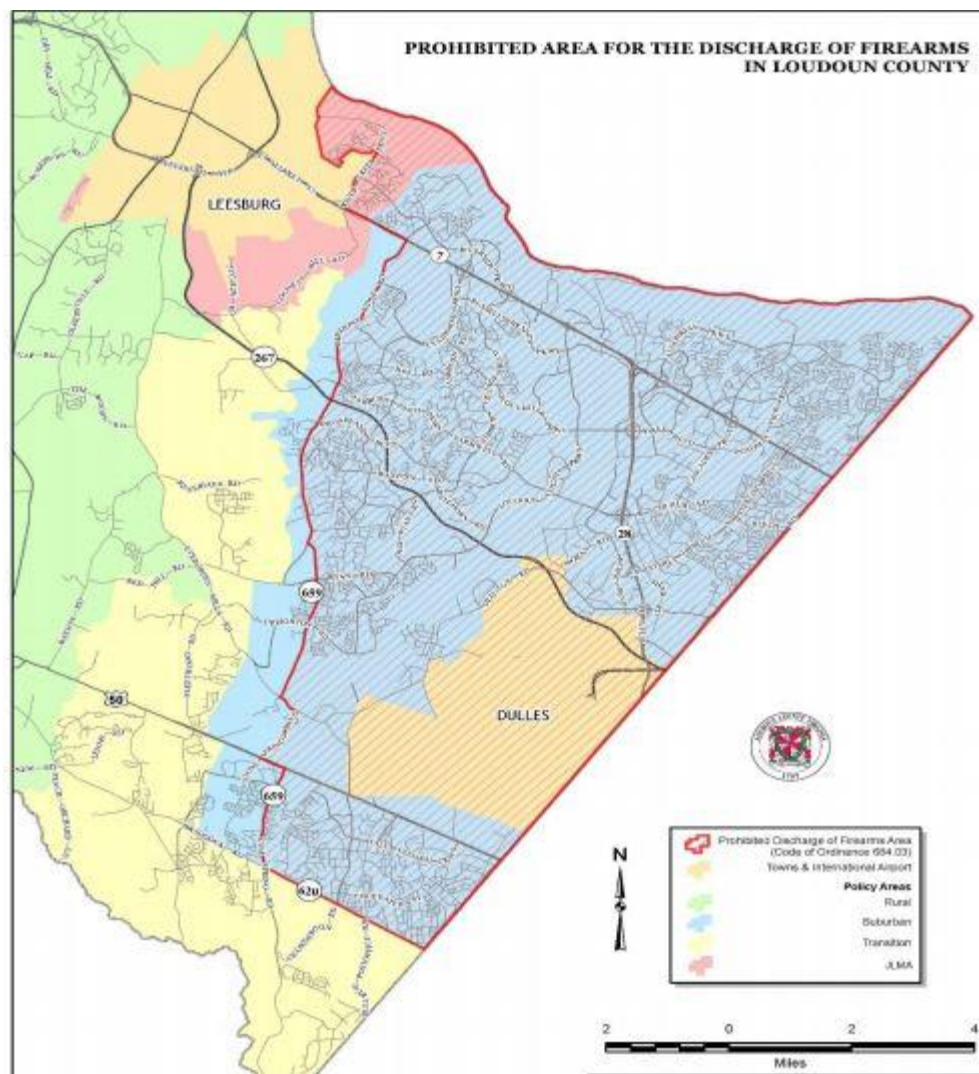


- Develop a specific plan for public outreach, information, education, and the identification of training opportunities to promote the safe discharge of firearms. Please see the firearms safety video from the Sheriff's Office that reminds residents to know the law, be safe, and be considerate of those around you before hunting or target shooting.



Firearms Safety- Loudoun County Sheriff's
Office

- Consider boundary revisions to the prohibited area in a manner that most closely aligns with the current boundaries of the Suburban Policy Area. The red line in the map below shows the boundary of the prohibited area. The blue section shows the suburban policy area of Loudoun County.



- Consider increasing the prohibited distance for discharge of firearms from 50 yards to 100 yards from roadways in the primary and secondary system. This increase would make us consistent with the rest of the Northern Virginia region. The table below shows a comparison of local discharge of firearms ordinances.

County	Discharge Near/Across Roadways	Discharge Near Structures
Loudoun	50 yards	100 yards
Fairfax	100 yards	Yes
Prince William	100 yards	100 yards
Clarke	Yes; hunting within 100 yards	-
Fauquier	100 yards	100 - 200 yards
Stafford	Yes, 100 yards	100 yards

- Consider safety standards regarding the utilization of berming and/or downhill shooting in conjunction with prolonged target shooting
- Research the enforceability of Virginia Code Sections 18.2-56.1, reckless handling of firearms; reckless handling while hunting and 18.2-279, discharging firearms or missiles within or at building or dwelling house.

I made an additional motion to consider revising the prohibited boundary area so that shooting would be prohibited within the Leesburg Joint Land Management Area east and south of Town and the Transition Residential (TR)-1 and Transition Residential (TR)-3 areas. My motion would have brought this issue back to the February Transportation and Land Use Committee meeting. The motion failed. I made this motion to formally protect homeowners in Leesburg, Willowsford, and comparable communities from the kind of reckless gunfire from backyard shooting ranges that resulted in 8 homes in the County being hit by gunfire since May. Even though discharging a firearm within the Town limits is prohibited by the Leesburg Town Code, in the parts of the County adjacent to the Town, there is no comparable County prohibition against discharging a firearm. Homes in the Town that border the County are as much at risk as the 8 homes in Willowsford and rural areas that were hit by errant gunfire over the last several months.

I want to thank everyone who came to the public hearing on this issue. I know many folks think that they should have the right to shoot on their own property, but private property rights go both ways: homeowners have the right to live quietly in their homes without the fear of getting shot or having their homes hit by errant gunfire. The Board will have a major challenge to accommodate everyone's rights.

Increasingly, informal backyard shooting ranges are not compatible with rural economy uses that have been encouraged - like wedding venues, wineries and breweries. I would ask our gun owners who want to shoot near their neighbors, that they please ask their neighbors for permission to do so. When there is a risk that the rounds fired from one person's backyard shooting range are apt to cross into someone else's property, we have to respect the rights of all people to enjoy their own property and live quietly in their homes without fear of being shot. Responsible gun owners have an opportunity to let their fellow gun owners know that it is not acceptable to be careless with their guns.

Potential Aircraft Tax Rate Increase

At the December 11th Finance Committee, the Board discussed the options and fiscal impact of changing the personal property tax rate on aircraft from \$0.01 to \$2.10 and \$4.20 per \$100. There are presently 299 taxable aircraft with ownership in the County. Of these, 69 percent of the aircraft are located within the Town of Leesburg.

The table below provides an overview of potential revenue generation at the current rate of \$0.01, as well as \$2.10 and \$4.20 per \$100.

Revised Table 1 - Taxable Aircraft Located in Loudoun County					
Situs	Assessed Value	Count	\$0.01/\$100	\$2.10/\$100	\$4.20/\$100
Outside Town Limits	\$307,092,000.00	91	\$30,709.20	\$6,448,932.00	\$12,897,864.00
Town of Leesburg	\$62,116,000.00	208	\$6,211.60	\$1,304,436.00	\$2,608,872.00
Totals	\$369,208,000.00	299	\$36,920.80	\$7,753,368.00	\$15,506,736.00

However, aircraft owners can and do easily relocate their aircraft to lower tax jurisdictions whenever tax rates are raised, so the potential increased revenue could literally fly away when the tax rate is increased, leaving the County with less revenue than it currently collects. The Committee requested information from area jurisdictions that had increased the personal property tax rate on aircraft, to evaluate the impact of a rate increase.

Transportation

Distance Based Tolling on Dulles Greenway

After months of negotiations, Delegate John Bell, Delegate David Reid, and Chair Phyllis Randall, announced a preliminary agreement to implement distance-based pricing for off-peak hours on the Dulles Greenway. The agreement still needs to be

approved by the General Assembly, but a critical part of the negotiations is that users from Leesburg and residents from the west will not pay more to drive the entire length of the Greenway than under the current pay structure. My office has received questions about whether the Dulles Greenway will cost \$14 one way should this plan be implemented. The answer at this time is no.

The details of the proposal for the distance-based pricing deal include:

- Off-peak distance-based pricing of \$1 per mile, with a maximum toll not to exceed the full-length off-peak toll (this is most applicable if you are going short distances or between exits on the Greenway);
- No user will pay more under the current pay structure;
- Distance-based pricing will be in effect for non-peak hours (21 hours/day) and 24-hours/day on weekends and holidays, which equates to potential significant toll savings during more than 90% of the operating hours;
- The current toll escalation structure that was put in place in 2008 to reduce the rate at which tolls escalated relative to those being awarded by the State Corporation Commission will continue until the road is turned over to the state;
- Creates flexible options for commuters, reducing costs for businesses, and significantly increasing traffic options along the east-west corridor;
- It will cost the Greenway approximately \$30 million in upfront infrastructure to implement this solution. This cost will not be passed on to users.

Evergreen Mills Road Closure

Evergreen Mills Road between Shreveport Drive and Belmont Ridge Road is closed to through traffic until early March 2019 for road realignment work being completed by the Brambleton developer. Residents within the closure area, emergency vehicles, school buses and those needing to access the Northern Virginia Electric Cooperative substation are still able to access the closed portion of Evergreen Mills Road.

Traffic is being detoured via Belmont Ridge Road and Shreveport Drive back to Evergreen Mills Road (please see map below).



Due to the holiday, the Board's next business meeting is scheduled for Wednesday, January 2, 2019, beginning at 5:00 pm in the Board Room of the Loudoun County Government Center in Leesburg. Thank you and Happy New Year!

Very sincerely yours,

Kristen C. Umstattd
Leesburg District
Loudoun County Board of Supervisors
kristen.umstattd@loudoun.gov
703-777-0203

Valerie Suzdak
Chief Legislative Aide
Supervisor Kristen Umstattd, Leesburg District
valerie.suzdak@loudoun.gov



Mayor Kelly Burk's Corner

Can you believe that 2018 is almost over? It's been a great year here in Leesburg, and 2019 looks to be even better.

On Monday, December 17th, I had the privilege of welcoming six new police officers to the Town of Leesburg's Police Department. Four of our new officers just graduated from the Northern Virginia Criminal Justice Training Academy and two come to us from the Arlington and Alexandria Sheriff's Offices. Three more recruits start the academy in January and will graduate in June 2019.

On January 1st, we will have a new face on the Town Council. I'd like to welcome Neil Steinberg and congratulate him on his election. I'd also like to thank our out-going council member, Vanessa Maddox, for her service to the Town. Vanessa was a thoughtful and dedicated public servant during her time on the Town Council.

Please join me at the annual Dr. Martin Luther King, Jr. Day march and celebration on Monday, January 21st. Marchers will gather on the Loudoun County Courthouse lawn in downtown Leesburg at 10 am. At approximately 10:15 am, marchers will proceed down Market Street to the Douglass Community Center, where refreshments will be served, followed by a celebration program.

If you believe the weather forecasters, we can expect a colder, snowier winter than usual. Please take some time before the next snowfall to prepare your home and family. When snow is in the forecast, remove vehicles, trash cans, and other items from the roadway to give the snow plows as much space as possible to push snow. It really makes a difference in how quickly our crews can clear the roads. For more tips and information on winter weather preparedness, visit the Town [website](#).

Finally, a reminder that there will be no trash or recycling collection in Leesburg on Christmas Day or New Year's Day. Collections will be shifted by a day for the rest of the week following each holiday. Also, Patriot will be collecting natural Christmas trees on Monday, December 31st and Monday, January 7th. For more information, visit this [website](#).

I hope everyone has a wonderful holiday season and a safe New Year's Eve.



Business of the Month The Conche

The Conche delivers an exceptional experience. Its passion is to make life's every moment, and every occasion memorable by indulging in chocolate. In the late 18th Century, it was discovered that the quality of chocolate could be massively improved through prolonged churning and stirring (Conching).

Celebrity Chef Santosh Tiptur, owner of The Conche, is a world-renowned pastry chef known for his whimsical sweet and savory culinary creations. He is very humbled and honored to be able to share The Conche with everyone in Loudoun County, and beyond. It is a place to gather and enjoy a meal, beautiful chocolates, cooking classes, cocktails and everything in between. The Conche is located in the Village at Leesburg at 1605 Village Market Blvd, SE.

Events & Info



Attention Shoppers: Do you have last-minute holiday shopping to do for coworkers, friends or family members? Many Loudoun farm stores have unique gifts for everyone on your list. You can get Loudoun-grown lavender products from Blooming Hill Lavender Farm; gift baskets with delicious goats-milk caramel from Georges Mill Farm; artisanal soaps from Long Stone Farm; wine totes from Shepherds Corner Farm, and more! For more gift ideas, check out the downloadable holiday guide on the [Loudoun Farms website](#).

Loudoun Nonprofit Grant Funding Application: The County is now accepting applications from community nonprofits and the online grant application and related documents is available at this [website](#). Tax-exempt, nonprofit 501(c)3 organizations are eligible, and funding is focused on services in the following areas of need:

- Prevention and Self-sufficiency
- Crisis Intervention and Diversion

- Long-term Support
- Improved Quality of Human Services

Applications must be submitted by 5:00 pm, January 18, 2019. The amount of funding will be determined during the FY 2020 budget discussions. In FY 2019, the budget for human service nonprofit grant funding was \$1.09 million. Adoption of the budget is expected in April 2019, with funding for successful applicants to begin July 1, 2019.

Coffee with a Career Counselor: Members of the community are invited to have coffee with a career counselor from the Loudoun Workforce Resource Center. Stop by a local coffee shop for a conversation about anything career related. You can review your LinkedIn profile or resume, ask questions about your job search or career change strategy and find out about resources and job opportunities. The events will be held:

- Wednesday, January 9, 2019, 9:00 - 11:00 am, Bean Bar, 1601 Village Market Boulevard, Suite 122 in Leesburg.
- Wednesday, January 16, 2019, 9:30 - 11:30 am, Blend Coffee Bar, 43170 Southern Walk Plaza #120 in Ashburn.

Survey for Cable TV Subscribers: The Communications Commission is hosting a survey and public meeting to solicit input on Comcast Communications' and Verizon's performance. The survey is open through January 31st. Loudoun currently has two cable television providers, Comcast and Verizon, each of which holds a non-exclusive franchise with the county. Under the terms of the franchise agreement, a subscriber satisfaction survey is to be conducted periodically.



Leesburg District, 1 Harrison St, S.E., 5th Floor, PO Box 70000, Leesburg, VA 20177

[About our service provider](#)

Sent by kristen.umstattdd@loudoun.gov in collaboration with



Try it free today