



Loudoun County, Virginia

www.loudoun.gov

NEWS RELEASE

Office of the County Administrator, Public Affairs and Communications
1 Harrison Street, SE, P.O. Box 7000, Leesburg, VA 20177-7000
703-777-0113 • Fax 703-771-5841

For Immediate Release Media Contact: Glen Barbour, Public Affairs and Communications Officer
September 13, 2019 703-771-5086, Glen.Barbour@loudoun.gov

Traffic Signal at Route 7 and Lexington Drive to be Decommissioned October 7

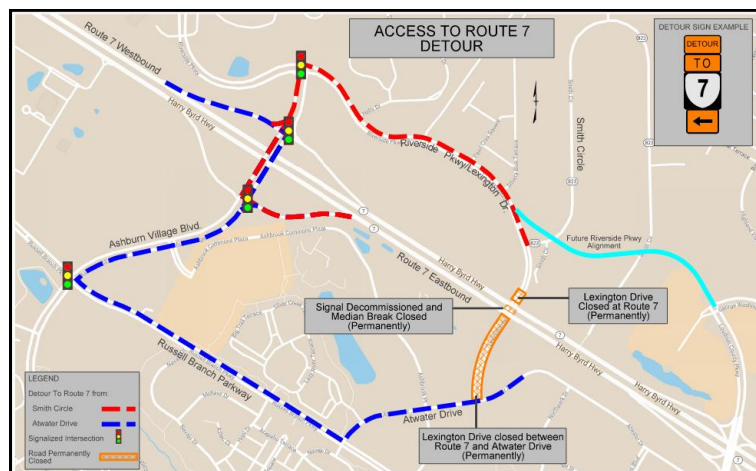
Loudoun County officials announce access to Lexington Drive from Route 7 (Harry Byrd Highway) will end with the decommissioning of the traffic signal at the intersection following the morning rush hour on October 7, 2019. Motorists traveling along Route 7 mid-day on October 7 should expect minor delays while the signal is being decommissioned and access to Lexington Drive is being eliminated. The schedule is subject to change based on weather.

The county is working closely with the Virginia Department of Transportation to expedite the decommissioning of the traffic signal. Beginning September 23, 2019, electronic message boards and detour signage will be placed along Route 7, as well as Lexington Drive, informing motorists of the coming changes. Motorists may observe additional work in the area, such as the staging of barrels and plastic barricades, in preparation for the closing of the intersection.

The intersection changes will result [in detours for Lexington Drive traffic accessing Route 7 east and west bound](#). Motorists will be rerouted to the Ashburn Village Boulevard interchange with Route 7. Following the closure of the intersection, access to the Blue Mount Nursery will be via Riverside Parkway/Lexington Drive from Ashburn Village Boulevard.

The decommissioning of the traffic signal will allow for the unrestricted flow of traffic along Route 7, from Leesburg to Route 28 and beyond. The decommissioning of the traffic signal at Route 7 and Lexington Drive is part of the final construction of Riverside Parkway, from Lexington Drive to Loudoun County Parkway, which is scheduled to begin in fall 2019.

More information, including a link to sign up for updates on the Riverside Parkway project, is posted at www.loudoun.gov/RiversideParkway.



Lexington Drive to Route 7 Detours

###