



Broad Run Bulletin

Supervisor Sylvia R. Glass



February 2020

Committee Assignments:

- [Board of Supervisors Transportation and Land Use Committee](#)
- [Joint Board of Supervisors & School Board Committee](#)
- [Metropolitan Washington Council of Governments Air Quality Committee](#)
- [Route 28 Transportation Improvement District Commission](#)
- [Disability Services Board](#)

Office Contact Information:

Phone: 703-771-5088



Email:

Sylvia.Glass@Loudoun.gov

Loudoun.gov/BroadRun

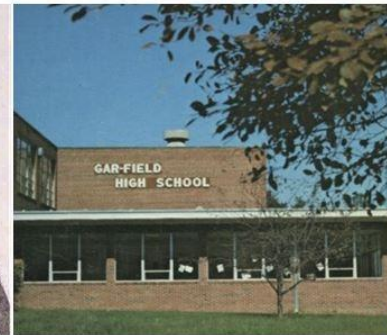
1 Harrison St. SE, Leesburg, VA
20175

Black History Month

February is Black History Month and marks the commemoration of achievements made by African Americans in this country. As we come to the end of the month, I want to share my family history with integrating the public schools in Prince William County. My sister, Joyce Russell, was the first black student to integrate Gar-Field High School in Woodbridge, VA, in 1961. As a result of Joyce attending Gar-Field, my family received many threats, including the KKK shooting at our home. In addition to my sister, my brother Jimmy was the first student to integrate Fred Lynn Middle School, and my siblings Deborah and Cameron were the first to integrate Occoquan Elementary School. I remember many conversations over the years where Joyce recalled the fear she experienced by merely walking into her school. You can view a Facebook post explaining the story in further detail by clicking the picture. Even though Black History month is over, that does not mean the African American history book needs to be closed. I encourage everyone to remember the contributions Black citizens have made to this country, and to explore the



Joyce Russell as a 9th Grader



Gar-Field High School

Within, and near, the Broad Run District there are many historic sites dedicated to the former enslaved and black citizens of Loudoun: Oak Grove Baptist Church and Cemetery, the burial ground for the enslaved at Belmont Plantation, Sycolin Cemetery, and the Historic Ashburn Colored School. Oak Grove Cemetery and the Belmont Burial Ground are open to the public and easily accessible. On Saturday, February 29 the Loudoun School for Advanced Studies (20577 Ashburn Road) will hold an event highlighting the Ashburn Colored School. The event will be from 1:00pm to 4:00pm and will include speeches, presentations, discussions, and a tour of the schoolhouse. Visit framersprojects.org for more information and to RSVP.

history of the Black community
right here in Loudoun.

Follow me on Social Media



[Supervisor Sylvia R.
Glass](#)



[@SylviaBroadRun](#)



[@SylviaBroadRun](#)

Serve on a Loudoun Advisory Body

Open Broad Run Seats

1. [Animal Advisory Committee](#)
2. [Commission on Aging](#)
3. [Communications Commission](#)
4. [Lyme Disease Commission](#)
5. [Parks, Recreation and Open Space Board](#)

Loudoun County has around 40 advisory boards and commissions on which residents are invited to serve through Board of Supervisors appointment. Most boards are filled through at-large seats, which are open to residents from all parts of Loudoun. However, certain boards are filled through district specific seats, where the district supervisor appoints the representative. If you are interested in serving on any of these committees, please apply using the link below, and someone from my office will be in touch.

To find out more about each committee, like meeting times and missions, visit [Loudoun.gov/Advisory](https://loudoun.gov/Advisory)

Do You Know An Outstanding Volunteer?

Each year, Loudoun Cares presents awards to volunteers in the county who go above and beyond to provide distinguished service to their community.

As Supervisor, I am tasked with nominating an outstanding volunteer from the Broad Run District. Since I do not know every single resident of the district, I need help identifying the best servants in our district.

If you know of an outstanding volunteer who deserves to be recognized, email me at

Sylvia.Glass@Loudoun.gov.

Submissions are due by 9:00am on Thursday, March 26.



2020 Democratic Presidential Primary

Six Things to Know about the March 3, 2020, Primary Election in Loudoun

Loudoun County voters have the opportunity to go to the polls Tuesday, March 3, 2020, for the Democratic presidential primary. The Republican Party is not holding a primary in Virginia, but will select delegates to its national convention at a state convention. Here are six things Loudoun County election officials want voters to know about the March 3 primary election:

1. Know Who Can Vote

All registered voters in Loudoun County are eligible to vote in the primary election as Virginia does not register by party affiliation.

2. Know When to Vote

Polls in Loudoun County will be open from 6:00 a.m. to 7:00 p.m., Tuesday, March 3, 2020. The last day to vote absentee in person is Saturday, February 29, 2020. Absentee voting is taking place at the Loudoun County Office of Elections and Voter Registration, 750 Miller Drive SE, Suite C in Leesburg. Details are online at loudoun.gov/presidentialprimary.

3. Know Where to Vote

Voters will cast their ballots at their normal polling location. Note that voters who reside in Lovettsville and previously voted at the Lovettsville Community Center will now vote at the Lovettsville Volunteer Fire and Rescue Station. Anyone who is not sure about where to vote may check their voter registration card or look up their polling place and related information online at vote.elections.virginia.gov. A list of polling places in Loudoun is available at loudoun.gov/polls. Also, curbside voting is available at all polling places for individuals who have mobility issues.

4. Bring Your Voter ID with You

Voters are required to show an acceptable form of photo identification at their precinct. Acceptable forms of photo ID include a Virginia DMV-issued driver's license, a U.S. passport, a student photo ID from a college or university located in Virginia, or a government-issued photo ID. Voters who do not have one of these forms of photo ID are eligible for a free Virginia Voter Photo ID Card. More information is online at loudoun.gov/VoterID.

5. Know Who is on the Ballot

Only the candidates running for the Democratic nomination for president will be on the ballot. Please note that the ballot includes the names of all candidates who had filed at the time of printing. As of this time, no candidates have officially notified the Virginia Department of Elections that they have withdrawn. A sample ballot is online at loudoun.gov/presidentialprimary.

6. Stay Informed Before, During and After the Election

- Text LCVOTES to 888777 to receive text alerts from the Loudoun County Office of Elections and Voter Registration or sign up for the Election Update category through [Alert Loudoun](#), the county's email and text notification system.
- Follow the Office of Elections and Voter Registration on [Facebook](#) and [Twitter](#). Loudoun County Government also posts general information on [Facebook](#) and [Twitter](#).
- Get election results: Preliminary results of voting in Loudoun County in Tuesday's election will be available following the closing of the polls on election night. Loudoun County preliminary results will be available [here](#) as they are reported. Additionally statewide results will be available from the [Virginia Department of Elections](#).

More information about the March 3, 2020, primary election is online at loudoun.gov/presidentialprimary.

2020 Census

The 2020 Census is Almost Here – What Does it Ask?

There have been a lot of headlines about the 2020 Census, so I want to make sure all Loudoun residents have accurate information on what is asked in the Census and why.

The 2020 Census **does NOT** ask for a resident's immigration status, Social Security number, financial information, email address, or political party. A resident **does not** have to be a U.S. citizen to respond to the Census, as the Census counts everyone in the United States.

The 2020 Census **does ask** the name, age, sex, race, and ethnicity of every person living with you in order to determine **adequate funding** for programs impacted by Census data such as our schools, healthcare, and roads. These questions also help determine the federal, state, and local election political representation. The Census asks if your home is rented or owned to obtain information used for funding affordable housing voucher programs.

Your Census invitation will arrive in the mail in March. For more information about the Census and its impact on Loudoun County, visit

loudoun.gov/2020Census.

Mark Your Calendar – The 2020 Census is One Month Away!

Every ten years, the Constitution requires a count of everyone in our nation, and the next Census opens in mid-March 2020.

Do you know if you want to respond online, by phone, or by paper form?

Check out the schedule below to make sure you know when to respond!

Every resident in Loudoun County counts, regardless of age, relation, or immigration status. If multiple families are in a home, everyone in the home should either be listed on one form or respond individually online.

Everyone Counts in Loudoun to ensure we receive our fair share of funding for our schools, healthcare, roads, affordable housing, and more. Mark your calendar and make sure you and your neighbors are ready to respond!

Census Mailer

- **English:** Your invitation to respond to the Census will be mailed to your home—do you know what it looks like? Watch the mail in mid-March for your invitation to respond!

- **Spanish:** La invitación para que responda al Censo será enviada a su casa. ¿Sabe cómo es la invitación? ¡Esté pendiente del correo a mediados de marzo para comprobar que haya recibido su invitación para responder!

Loudoun Impact

- Did you know the Census impacts everyone in Loudoun County for the next 10 years? Ensure our fair share of funding for schools, roads, healthcare, and more by responding when your invitation arrives in March. Watch below to learn more or visit loudoun.gov/2020Census.

Video Link: 2020census.gov/en/partners/psa-toolkit/data.html

Loudoun County Urges Residents to Stay Informed About Novel Coronavirus

The Loudoun County Health Department encourages residents to stay informed about the novel coronavirus situation.

The Centers for Disease Control and Prevention (CDC) and the Virginia Department of Health are closely monitoring an outbreak of respiratory illness caused by a novel (new) coronavirus (termed "2019-nCoV") first detected in Wuhan City, Hubei Province, China.

While five individuals in the Commonwealth have been tested for the illness to date; as of today, there have been no known cases of 2019-nCoV in Virginia. Person-to-person spread in the United States has not yet been detected.

As a measure of preventing the spread of the virus in the U.S., the CDC has expanded entry screenings to 20 existing U.S. airport quarantine stations, one of which is located at Dulles International Airport. Passenger screenings will include a review of travel history and a check for 2019-nCoV symptoms.

The best way to prevent infection is to avoid being exposed to this virus. There is currently no vaccine to prevent 2019-nCoV infection. The CDC recommends against all non-essential travel to China. The CDC also recommends everyday preventive actions to help prevent the spread of respiratory viruses, including:

- Wash your hands often with soap and water for at least 20 seconds. Use an alcohol-based hand sanitizer that contains at least 60% alcohol if soap and water are not available.
- Avoid touching your eyes, nose, and mouth with unwashed hands.
- Avoid close contact with people who are sick.
- Stay home when you are sick.
- Cover your cough or sneeze with a tissue, then throw the tissue in the trash.
- Clean and disinfect frequently touched objects and surfaces.
- Follow CDC's recommendations for using a facemask:
 - CDC does not recommend that people who are well wear a facemask to protect themselves from respiratory diseases, including COVID-19.
 - Facemasks should be used by people who show symptoms of COVID-19 to help prevent the spread of the disease to others, and by health workers.

To learn more about coronavirus and for links to information about the current situation, visit loudoun.gov/coronavirus.

Loudoun County residents, visitors or workers with questions about coronavirus may also contact the Loudoun County Health Department by email at health@loudoun.gov or by phone at 703-771-5829.

Join the Loudoun County Medical Reserve Corps

Volunteers working to protect you, your family, and your community.

Anyone who wants to help the Health Department keep Loudoun County residents safe and protect the public's health should join the Medical Reserve Corps. No medical experience necessary!

In a bioterrorism event or mass epidemic, the Loudoun County Health Department is prepared for the possibility of opening emergency mass vaccination and medication dispensing clinics. Medical Reserve Corps (MRC) volunteers, both nonmedical and medical, would be key to staffing these sites. Nonmedical Volunteers would perform key clinic roles such as registration, data entry, language translation, medical personnel assistance, and directing foot traffic. MRC members can also assist with other public health responses in our community.

When you join

- Receive free training on such topics as CPR, first aid, incident command, and emergency preparedness
- Play a significant role in keeping your family and community safe.

Requirements

- A Loudoun County resident at least 16 years old
- Have no personal or professional commitment that would prevent serving in an emergency
- Undergo a free reference or background check
- Complete an orientation session
- Optional: Complete incident command class

Interested in becoming an MRC volunteer?

Learn more and contact us!

mrc@loudoun.gov
[Loudoun.gov/mrc](https://loudoun.gov/mrc)

Proposed Budget for Fiscal Year 2021

County Administrator Tim Hemstreet has presented a proposed budget for the Loudoun County government to the Board of Supervisors for Fiscal Year 2021 (FY 2021), which begins July 1, 2020. The budget totals \$3.024 billion in appropriations for the county government and Loudoun County Public Schools (LCPS), with Loudoun County Public Schools consuming 67 percent of the budget.

Proposed Budget

The proposed budget has been prepared at a real property tax rate of \$1.035 per \$100 of assessed value, one cent below the current real property tax rate of \$1.045 per \$100 of assessed value. Although the Board of Supervisors' guidance to the County Administrator was to prepare a budget at the current real property tax rate, Hemstreet said "positive shifts" in the revenue picture that occurred after the Board's final guidance and a lower-than-anticipated budget request from LCPS prompted him to prepare a budget at a lower tax rate that is in keeping "with the spirit of the Board's guidance."

"Prepared at the tax rate of \$1.035, I believe that the proposed budget not only meets the needs of our organization and our community, it is also responsible, executable and sustainable," Hemstreet said.

The priorities for the FY 2021 proposed budget include employee pay, opening new facilities, supporting the county's Capital Improvement Program (CIP) and the Board's strategic priorities and providing resources to departments to support their top needs. Hemstreet noted that the county's population continues to grow at a rate of about 11,000 additional residents every year, which brings new and increased demands on county programs and services. The FY 2021 proposed budget includes:

- \$12.9 million in base budget adjustments to continue to provide current services, including increases in contracts and ongoing maintenance agreements, lease and utility increases and inflationary impacts.
- \$37.2 million in total for employee compensation, which consists of:
 - \$12.2 million to provide a market-competitive 3.5% pay increase for general workforce employees and public safety step increases, continuing the county's merit and step compensation program; and
 - \$25 million to cover the annualized cost of the implementation of the new classification and compensation system.
- The addition of 150 positions in 25 different departments to maintain or enhance current service levels, open new facilities, support the county's CIP and position the organization to pursue the Board's strategic priorities.
- An increase of more than \$75 million to fund all but \$2.5 million of the LCPS budget request.

Factors Shaping the Proposed Budget

The proposed FY 2021 budget was developed in a favorable economic climate similar to that of FY 2020; however, Hemstreet said several "unique circumstances" influenced this year's budget development, including:

- The full implementation of the county's new classification and compensation system, which results in a larger impact on the base budget for compensation increases, compared with recent years.
- Increased funding for the CIP and debt service. An additional \$49.3 million over the previous fiscal year is included in the proposed budget to fulfill county debt and capital obligations, which is higher than previous years.
- Onboarding of addition positions. The creation of a significant number of new positions over the past few years has created pressure on internal service agencies to process those employees as well as work space challenges.

The FY 2021 proposed budget also includes \$15 million in local gasoline tax funding for Loudoun County's contribution to the Washington Metropolitan Area Transit Authority and for the operational and capital payments due to the anticipated start of Metrorail's Silver Line revenue service in Loudoun County during FY 2021.

Capital Improvement Program (CIP)

The Amended FY 2021-2026 Capital Improvement Program (CIP), which includes both county and school projects, totals \$2.9 billion for the six-year planning period. The category with the largest expenditure percentage is transportation projects at 40%. Some of the new transportation projects in the CIP include widening a portion of eastbound Route 7 between Loudoun County Parkway and Route 28 and an intersection improvement on Shellhorn Road. Other new projects in the CIP include two Board-directed projects: the Broad Run Farms Waterline Extension and planning for a linear parks and trails system, as well as critical technology infrastructure projects for the county government. School projects account for 27% of the proposed CIP, which fully incorporates the School Board's adopted capital plan and accommodates all school projects.

Tax Rates Summary

The proposed budget is balanced at the property tax rate of \$1.035. Hemstreet also provided the Board with two additional tax rate scenarios for their consideration: one at one cent below and one at one cent above the proposed budget rate.

Hemstreet has advertised a real property tax rate of \$1.045, which provides the Board with flexibility to fully fund the LCPS budget request and consider additional county government priorities.

The Board of Supervisors will determine the final real property tax rate and related budget policy decisions during March budget work sessions with adoption of the FY 2021 budget expected at the Board's business meeting April 7, 2020.

Public Participation

There are several ways in which members of the public may participate in the budget process, including Board of Supervisors public hearings, email, voice messages and social media. The Board will hold three public hearings on the proposed FY 2021 budget. The hearings are scheduled for:

- **Saturday, February 29, 2020, 9:00 a.m.**
- Loudoun County Public Schools Administration Building, 21000 Education Court, Ashburn.

Anyone who wishes to speak at the public hearings may sign up in advance for one speaking slot, beginning Thursday, February 13, 2020, by calling 703-777-0204.

The two public hearings at the government center will be available for viewing on Comcast Government TV Channel 23, Open Band Channel 40 and Verizon FiOS Channel 40. They will also be webcast at loudoun.gov/webcast.

Members of the public may also:

- Leave a message on the Board of Supervisors' Comment Line at 703-777-0115.
- Send an email to the Board of Supervisors at loudounbudget@loudoun.gov, or write to the Board of Supervisors, P.O. Box 7000, Leesburg, VA 20177.
- Provide comments through the Loudoun County government's [Facebook](#) and [Twitter](#) sites.

For More Information

More information, including the FY 2021 proposed budget, the County Administrator's FY 2021 budget presentation, the schedule for Board of Supervisors budget work sessions and the Board's Finance/Government Operations and Economic Development Committee's CIP work sessions, is posted on the Loudoun County website at loudoun.gov/budget.

My Thoughts on the Budget

March is budget season for the Board of Supervisors and we are hard at work making sure that we do what is best for the tax payers of Loudoun. I am looking forward to the budget work sessions where we take a closer look at all aspects of Loudoun's budget.

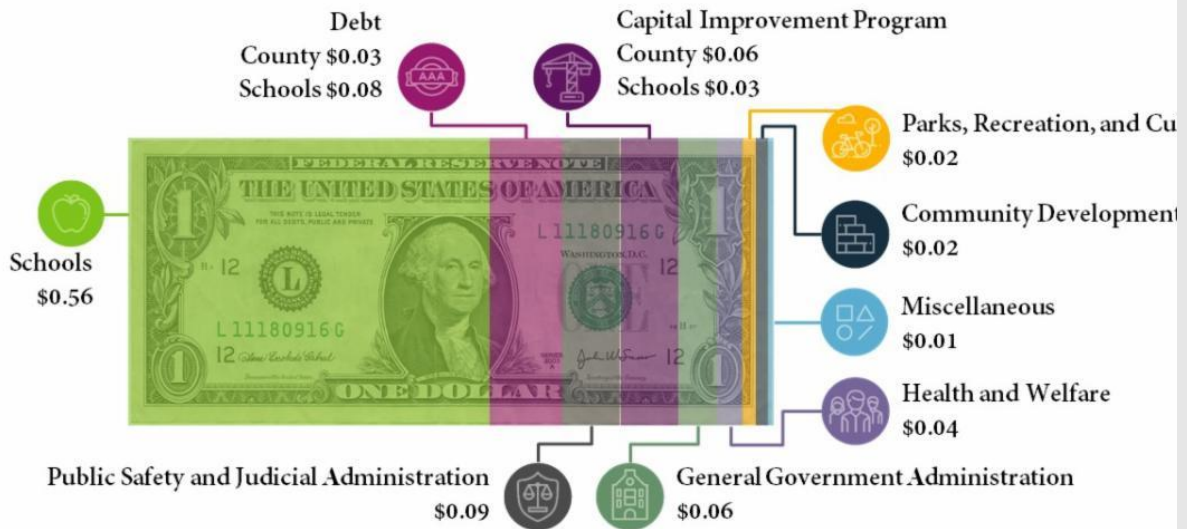
I fully support finishing the implementation of the county's [class and comp study](#), which brings the compensation for Loudoun employees up to parity with public employees in other regional jurisdictions. I am also pleased to see that the School Board performed their own budget deliberations and sent over a budget with a reduced request.

This process works best when the residents of Loudoun voice their opinions on the budget. There is one final budget public hearing tomorrow, February 29, at 9am, at the LCPS Administration building (21000 Education Ct, Ashburn, VA 20148). Of course, feel free to email me any of your thoughts on the budget at Sylvia.Glass@Loudoun.gov.

Your Tax Dollar at Work

Proposed FY21 Budget

Loudoun County
VIRGINIA



2020 Loudoun County Real Estate Assessments Available Online

Loudoun County Commissioner of the Revenue Robert S. Wertz Jr. announces that Loudoun County real estate assessments for tax year 2020 are now

available online at loudoun.gov/parceldatabase. Printed assessment notices will be mailed to property owners this week.

The assessment notices, which are not tax bills, communicate to property owners the value of their real property as of January 1, 2020, and are reflective of real estate market activity that occurred during 2019. The assessed value together with the tax rate set by the Board of Supervisors in April will provide the basis for real estate tax bills that will be due on June 5 and December 7.

Property owners who believe their assessments are incorrect may file an Application for Review with the Commissioner of the Revenue online at loudoun.gov/reaa by March 6, 2020. Thereafter, appeals may be made to the Board of Equalization until June 1, 2020.

The county's total taxable real estate increased to \$89.9 billion, up 7.6% overall. The typical existing condominium saw the largest average year-over-year increase in value of 8.14% while agricultural parcels 20 to 99 acres declined 9.6%. The average detached, single-family home was up 2.68%. The total value of taxable commercial property in the county came in at \$19.6 billion, up 7.43% over 2019. These numbers are only averages and property owners may see changes that are more or less than these figures.

Property owners may communicate with their respective appraiser whose name and contact information is listed on the assessment notice. They may also call the Commissioner of the Revenue's office at 703 777-0260 weekdays during regular business hours of 8:30 a.m. to 5:00 p.m. or email realestate@loudoun.gov.

The Commissioner of the Revenue's offices are located at the Loudoun County Government Center, 1 Harrison Street SE in Leesburg and in the Loudoun Tech Center at 21641 Ridgetop Circle, Suite 100, in Sterling. More information about the Commissioner of the Revenue is online at loudoun.gov/cor.

Loudoun Commissioner of the Revenue to Hold Real Estate Tax Relief Seminars

Loudoun County Commissioner of the Revenue Robert S. Wertz Jr. has scheduled free information sessions to familiarize residents with the eligibility criteria for the county's generous real estate tax relief program and new eligibility thresholds for 2020.

Loudoun County homeowners age 65 or older or with disabilities who are below established income and wealth limits may benefit from a reduction in the amount of property taxes they pay. Qualified applicants for real estate relief must have a gross combined income less than \$72,000, and net worth less than \$920,000. Up to \$10,000 in income of a spouse or relative residing in the home is excluded from the income calculation. Program participants saved almost \$8 million in real estate taxes in tax year 2019.

Find out about the county's tax relief program and have your questions answered. No appointment or RSVP is required to attend these free sessions. All sessions begin at 10:30 a.m. at the following locations.

- **Tuesday, March 3, 2020**, Purcellville Library, 220 East Main Street, Purcellville
- **Wednesday, March 4, 2020**, Ashburn Library, 43316 Hay Road, Ashburn
- **Tuesday, March 10, 2020**, Rust Library, 380 Old Waterford Road NW, Leesburg

Online applications will be available by March 2, 2020, at loudoun.gov/taxrelief. Residents may also call 703-737-8557 to have a form mailed to them or they may pick one up at the Commissioner's offices in the Loudoun County Government Center, 1 Harrison Street SE in Leesburg or the Loudoun Tech Center, 21641 Ridgetop Circle, Suite 100 in Sterling. Additional information about the program is available online at loudoun.gov/taxrelief.

Loudoun County Business Tax Filings due March 2, 2020

Loudoun Commissioner of the Revenue Robert S. Wertz Jr. has issued notices of business tax filing requirements to business owners for tax year 2020. The notice provides the necessary account number to enable taxpayers to report by Monday, March 2, 2020, their calendar year 2019 gross receipts at loudoun.gov/efile. The license tax or fee can then be paid at loudoun.gov/paytaxes. The filing of receipts and payment of the tax are due by midnight March 2. The annual filing deadline is March 1, but has been extended to March 2 because March 1 falls on a weekend.

Owners of business equipment that was located in Loudoun County on January 1, 2020, must declare it for taxation to the Commissioner of the Revenue at loudoun.gov/efile. The reporting of original cost, year of purchase and item description is due by midnight, March 2, 2020. Semi-annual bills for this equipment will be issued by the Loudoun County Treasurer and will be due May 5 and October 5.

Owners of businesses within one of Loudoun's incorporated towns should contact the respective town regarding local license renewal. The reporting of business equipment is made to the Commissioner of the Revenue for all businesses in the county whether within or outside of an incorporated town.

Taxpayers are encouraged to contact the Office of the Commissioner of the Revenue at 703-777-0260 or btcor@loudoun.gov with questions. Business owners may also obtain more information online at loudoun.gov/cor.

Workforce Resource Center to Host Open House March 12, 2020

The Loudoun Workforce Resource Center will host an open house Thursday, March 12, 2020, from 1:00 - 3:00 p.m. at the center located on the first floor of the Shenandoah Building, 102 Heritage Way NE in Leesburg. Anyone who attends the open house will have the opportunity to meet staff, tour the center and discover all of the free career resources and services available through the Loudoun Workforce Resource Center. Those attending will be able to:

- Learn about regional workforce initiatives.
- Get transit and commuting information.
- Register for upcoming workshops.
- Participate in interview question-and-answer session with a human resources professional.
- Take a career assessment.
- Mingle with employers that have openings to fill.

This event is free and open to anyone interested in getting job or career assistance, including college students. Additionally, those planning to attend the open house should register at lwrcopenhouse.eventbrite.com. There will be giveaways for the first 25 visitors.

Anyone who requires a reasonable accommodation for any type of disability in order to participate in the event may call 703-777-0150. Three days advance notice is requested.

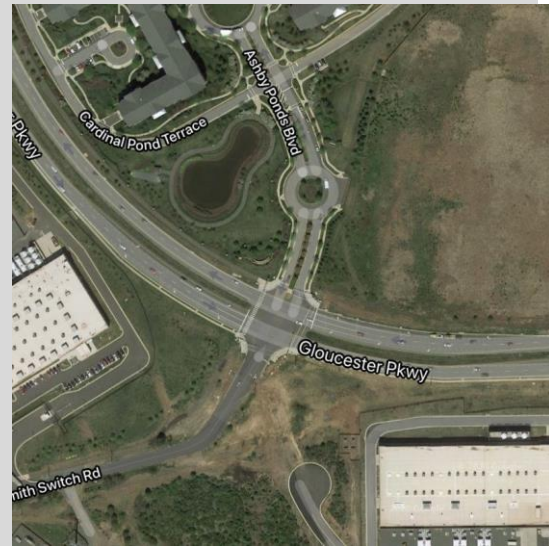
For more information, contact the Workforce Resource Center at 703-777-0150 or visit loudoun.gov/wrc.

Transportation and Community Projects



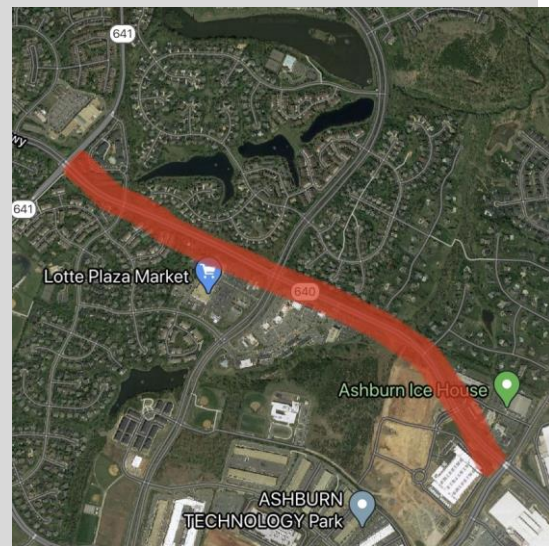
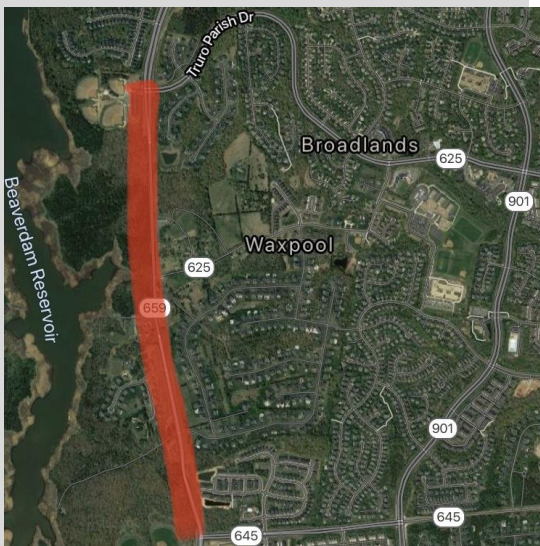
Ashburn Road Sidewalk Construction

Work has begun to build a section of sidewalk on the east side of Ashburn road from Partlow Road to the ballet studio. Construction is scheduled to be complete in summer 2020. Additionally, the old sidewalk on the west side of Ashburn road from Partlow Road to Haven Crest Way will be completely removed. [View project renderings here.](#)



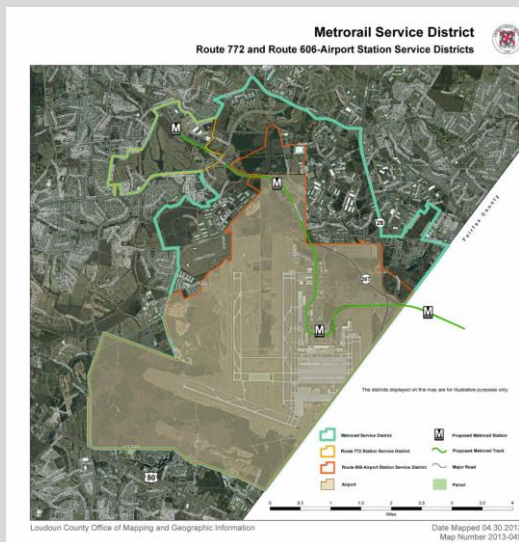
Ashby Ponds/Gloucester Traffic Signal

On Thursday, January 30, VDOT adjusted the traffic signal timing at Gloucester Parkway and Ashby Ponds Boulevard to optimize the movements. They are initiating the process to evaluate the split-phase operations and its effectiveness. VDOT will come back with recommendations to solve the left turn issue in the coming months.



Belmont Ridge Road Widening

The widening of Belmont Ridge Road from Truro Parish Drive to Croson Lane will not be completed as soon as originally thought. Land acquisition and utility realignment have delayed construction for many months. The widening now has a target completion sometime by 2024. The widening of the [bridge over the Greenway](#) is on track to be finished in fall 2020.

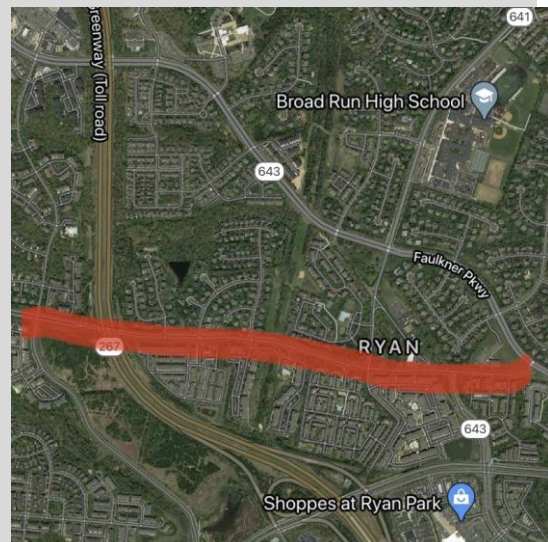


Metro Silver Line Update

As [media reports](#) have already indicated, the Silver Line Phase 2 opening is pushed further into the future. Numerous construction and safety problems have delayed the project, and fixes are being performed. The timeline is now April 2020 to October 2020 for substantial completion of construction, and January 2021 to July 2021 for full opening to riders. Safety testing must be conducted before passengers are allowed the ride.

Farmwell Road Intersection Improvements

Intersection Improvements along Farmwell Road, from Ashburn Road to Smith Switch and Waxpool Roads, are in final design stages. These intersection improvements are in lieu of widening Farmwell Road to six lanes. Construction is scheduled to start in spring 2023 with completion in spring 2025. [You can view the designs here.](#)



Waxpool Road Intersection Improvements

In November 2019, a study was completed on the safety of intersections along Waxpool Road, from Demott Drive to Faulkner Parkway. County staff recommended both short-term and long-term solutions for heavily trafficked intersections along that corridor. You can read the study and recommendations [online \(PDF\)](#). Construction on intersections improvements will happen in phases as funding gets allocated.

Community Organization Events and Updates

Loudoun Chamber of Commerce

#LeapofKindness Day

At the Chamber, we're promoting a new concept this February called #LeapofKindness Day to promote volunteerism in our community around the question "What are you doing with your extra day this year? Why not do good."

Participating is simple. Nonprofits can register with opportunities to serve. Volunteers can use the website (through Loudoun Cares) to find opportunities that best fit them.

Our website provides simple steps to participate. loudounchamber.org/leap-of-kindness-day



Friends of Adaptive Recreation

Loudoun Friends of Adaptive Recreation (FAR- a 501c3 nonprofit) has joined the Great Bike Giveaway!

Everyone deserves to go on a bike ride. For people with disabilities, especially mobility impairments, this is not an easy task.

FAR is trying to raise funds for The Duet, a Wheelchair Bicycle Tandem, which accommodates individuals from ages 2 to 99+. The front of the bike is a

Loudoun Youth Leadership Program

Now accepting applications!

Applications are being accepted for Loudoun Youth, Inc.'s 2020 Loudoun Youth Leadership Program until Wednesday, March 4th. Loudoun Youth Leadership Program sessions take place on July 6 - 10, 2020 and July 27 - July 31, 2020. A week-long program designed to introduce youth to leadership concepts and to provide exposure and interaction with local business, government and community leaders. The program is open to all high school students, public or private, who live in Loudoun County. Youth participating in the week-long sessions will spend time in a variety of locations - learning leadership skills in a classroom-type setting, observing leadership in action with business and civic leaders from around the county, as well as taking part in active, hands-on team building experiences. Applications and program information can be found at loudounyouth.org. Tuition is \$495/student. Financial aid is available to qualifying students.

Loudoun Youth, Inc. was established as a 501(c)(3) nonprofit organization in April 2005. The mission of the organization is to coordinate community resources to assist in the development of youth programs and to create leadership opportunities for young people. They support and develop programs that provide Loudoun teens positive out-of-school activities in safe environments, helping them to become confident and contributing members of the community.

George Mason University

wheelchair seat and the back is a tandem bike for the person pedaling.

Help us raise \$4,670 by March 25, 2020

greatbikegiveaway.com/far

HELP RAISE FUNDS FOR TANDEM BICYCLE FOR PEOPLE WITH DISABILITIES

Loudoun County Friends of Adaptive Recreation (FAR) has joined the Great Bike Giveaway

Help us raise \$4,670 by March 25, 2020.

Donations can be made online. <https://www.greatbikegiveaway.com/f>

The Duet is a Tandem Wheelchair Bicycle Tandem, which accommodates individuals from ages 2 to 99+.



The bike will be used at Adaptive Recreation Summer Camp and then Loudoun residents will be able to borrow the bike throughout the rest of the year.



Ashburn Ice House

Ashburn Ice House is a state-of-the-art facility located conveniently in the center of Ashburn. Since 1998, the Ashburn Ice House has provided an outlet for figure skaters, hockey players, just-for-fun folks and first-daters. From pure recreation to pro competition, Ashburn Ice House is where Loudoun County skates. The Ashburn Ice House features two indoor NHL-sized ice rinks, party space, locker rooms, a full-service ProShop, a weight training facility, and an in-house restaurant Pomodoros. The Ice House is easily accessible off of Route 28 and Route 7. The facility is a year round indoor ice skating facility.

Phone: 703-858-0300

Website: AshburnIce.com

Address: 21595 Smith Switch Rd, Ashburn

Looking for a career change? Look to George Mason University!

Come join our vibrant academic and professional community! You will be surrounded by people whose ideas are shaping tomorrow's workforce. George Mason University is the largest and most diverse public university in Virginia, reaching out beyond our campuses to create connections and forge partnerships across the region, the nation, and the world. Mason offers a competitive benefits package and is committed to providing flexibility, work/life options, and the opportunity for personal and professional development. Phone: Web: jobs.gmu.edu

In addition to full-time employment opportunities, we invite qualified candidates to apply for a range of campus-wide temporary positions via our Mason Talent Temp program. Positions range from a couple weeks to several months and serve as an exciting opportunity for personal growth and development. Apply today at jobs.gmu.edu and search for the keyword: "temp".

Are you a small business/entrepreneur looking for assistance?

Mason Enterprise Center Leesburg/Loudoun County is a small business incubator that fosters the evolution of existing companies that are scalable and want to grow. The center provides office space and business services in a shared-cost, peer-to-peer, entrepreneurial environment. In addition, companies are connected to expertise, resources and business coaching from the Small Business Development Center at MEC-Leesburg.



The center can help to accelerate business growth and improve long-term success. The Mason Enterprise Center network is focused on providing direct business assistance services while working to accelerate the culture of entrepreneurship and innovation within the region.

Phone: 703-466-0466

Web:

masonenterprisecenterloudoun.com

Location: Historic downtown Leesburg at 202 Church Street, SE

Ashburn Volunteer Fire & Rescue

March 8th - 8:00am - Pancake Breakfast - 12:00pm, Station 6, Founders Hall, 20668 Ashburn Road. Bring family and friends. \$9 Adults, \$7 Seniors, \$5 children 3-8, Children under 3 Free. (No parking at Mediterranean Breeze parking lot) (Upcoming dates: April 19th and May 10th. See our website for further details ashburnfirerescue.org)

March 15th - Love Wedding showcase - National Conference Center. Look for our table at this opportunity to check out all things bridal. For more details go to: eventbrite.com/e/love-loudoun-a-wedding-showcase-tickets-84951589491

March 31st - Prospective Members Meeting - 7:00pm - Station 6, Founders Hall, 20668 Ashburn Road,
Gear up and join the action! Benefits. 'Limited Opportunities Available - sign up now!'
Come and visit our table at the Grand Opening of Farmers Market, One Loudoun, March 28, 9 to 12

Founders Hall - Our newly remodeled AVFRD Founders Hall facility is now ready

Breakfast at the Firehouse
www.ashburnfirerescue.org
Sunday, January 12
Upcoming Dates:
February 2nd, March 8th, April 19th, May 10th
8:00 a.m. - 12:00 p.m.

AVFRD Memorabilia Sales Table!
Craft Table for the Kids!
Apparatus Tours with a Firefighter!

Menu:
Adults : \$9.00
Seniors: \$6.00
Children 3-12: \$5.00
Children Under 3: FREE!
All major credit cards accepted!

Ashburn Volunteer Fire & Rescue
Founders Hall, 20668 Ashburn Rd, Ashburn, VA

for your next event. Looking for a place to hold a wedding, meeting, holiday party, birthday party or other special event? For details go to founders-hall.com

Show Some Love to AVFRD by giving to AVFRD through the CFC. Our designation number is #51668
Look for us on facebook.com/avfrd

FIRE & RESCUE FOUNDERS HALL

*Ideal Venue for
Wedding Receptions
Rehearsal Dinners*



**3,600 Sq Ft
225 Capacity
Commercial Kitchen
Various Style Set-ups
Wet Bar**



We are your Neighbors
NEIGHBORS HELPING NEIGHBORS SINCE 1944

Call or Visit us

703 729-6850

[Https:// Founders-Hall.com](https://Founders-Hall.com)

20688 Ashburn Rd, Ashburn VA 20147

Useful Information

Loudoun Alerts

Stay up to date with school closings, traffic updates, and weather information by signing up for [Loudoun Alerts](#), using your email and/or phone number.

Board of Supervisors Information [Be informed](#)

about everything that comes in front of the BOS. Watch meeting videos, view documents, read reports, and sign up to speak.

School Board

View School Board, and general Loudoun School information on LCPS.org. Also, get to know Broad Run District School Board Member [Leslee King](#).

Virginia Real ID

Starting October 1, 2020, a "Real ID" will be needed to board airplanes in the United States. Find out whether your ID already complies by visiting the [DMV website](#).

Crosswalk Safety

As the weather warms and more people are out, remember to be cautious around pedestrian areas. [On roads above 35 mph, drivers are NOT required to yield to pedestrians.](#)

Loudoun Capital Improvements

There are tons of transportation and capital improvement projects happening all around the county. Check them out on an [interactive map](#).

Report a Road problem

Notice a pothole or fallen street sign? Report the problem to VDOT via their [online form](#). Most roads in Loudoun are maintained by VDOT, not local government.

Make a County Suggestion

[Loudoun Express Request \(LEx\)](#) is a citizen request system for the public to submit requests for service and report concerns to the county government.

Loudoun County Public Libraries

Libraries are not just a place to read a book. [LCPL](#) offers seminars, classes, and shows for all ages, as well as free spaces for community meetings.

E-Scooters

Loudoun County has enacted an electric scooter [pilot program](#), around the future metro stations, to see how e-scooters will be used in anticipation of Metro's arrival.

Hazardous Waste

Not everything should be thrown in the trash. [Find out when, where, what, and how](#) to dispose of dangerous household items. 2020 Waste Days are announced.

Sheriff Reports Crime reports are posted each regular business day.

These reports are not all-inclusive for cases reported, but only those noted for media interest.

Safe2Talk App

[Safe2Talk is a free app](#) that allows residents of Loudoun County to anonymously report school safety concerns to the County Sheriff's Office.

Fire Safety

The effects of a fire can be devastating! Loudoun Fire understands the best way to fight fires and reduce injuries is [by preventing them](#) in the first place.

Make A Plan

All throughout the year, but especially during the winter months, it is important to have a personal emergency plan. Find out more at [Loudoun.gov](#).

March Loudoun County Calendar

Sunday	Monday	Tuesday	Wednesday	Thursday	Friday	Saturday
01	02 <a>Show More Pop-Up Passport Fair Community Services Board (Executive Committee) Board of Supervisors Budget Work Session	03 <a>Show More Real Estate Tax Relief Seminar Rural Economic Development Council Board of Supervisors Business Meeting	04 <a>Show More Real Estate Tax Relief Seminar Zoning Ordinance Action Group Facilities Standards Manual Public Review Committee - Canceled	05 Board of Supervisors Budget Work Session Jump Start Your Job Search	06 Motions Day Economic Development Authority Commission Route 28 Highway Transportation Improvement District Commission	07 Board of Supervisors Budget Work Session (Tentative)
08	09 <a>Show More Term Day Pop-Up Passport Fair Board of Supervisors Budget Work Session	10 <a>Show More Indictment Returns Real Estate Tax Relief Seminar Affordable Dwelling Unit Advisory Board	11 Housing Advisory Board Board of Supervisors Public Hearing	12 <a>Show More Loudoun Workforce Resource Center Open House Health Council Community Services Board (Services Development Committee)	13 Misdemeanor Appeals & Criminal Docket Day Economic Development Advisory Commission (Executive) Lyme Disease Commission	14 Board of Supervisors Budget Work Session (Tentative) 6th Annual Shamrock Festival
15	16 Board of Supervisors Budget Work Session	17 <a>Show More Local Emergency Planning Committee Board of Supervisors Business Meeting Board of Supervisors Public Hearing	18 <a>Show More Human Services Strategic Plan Advisory Committee Zoning Ordinance Action Group (Committee of the Whole - Zoning Ordinance Rewrite) Facilities Standards Manual Public Review Committee - Canceled	19 Linear Parks & Trails Subcommittee Board of Supervisors Budget Work Session Parks, Recreation & Open Space Board	20 Rural Economic Development Council (Executive Committee)	21 Household Waste Collection Board of Supervisors Budget Work Session (Tentative)
22	23 Criminal Docket Advisory Commission on Youth	24 <a>Show More Affordable Dwelling Unit Advisory Board (Builders Committee) Art Advisory Committee Planning Commission Public Hearing	25 <a>Show More Animal Advisory Committee Commissioner of Accounts Fiduciary Meeting Facilities Standards Manual Public Review Committee	26 Economic Development Authority Board of Zoning Appeals	27 Criminal Motions Docket Rural Economic Development Council (Organic Workforce Pipeline Strategy) Battle of the Bands, Final Battle	28 Critters & Crafts Series
29	30	31	01	02	03	04

March Loudoun Schools Calendar

Sun	Mon	Tue	Wed	Thu	Fri
1	2	3 STUDENT HOLIDAY* (County...)	4 Human Resources & Talent D... Special Education Advisory C... MSAAC & SEAC Joint Present...	5 Equity Committee Meeting: S... 38th Annual Regional Spellin...	6
8	9 Discipline Committee "Close...	10 Finance and Facilities Commi... 4 & 6:30 PM 2nd Tuesday SC...	11	12 Gifted Education Advisory Co...	13 21st Annual School-Business...
15	16	17 Charter School Committee M... Legislative and Policy Commi...	18 Curriculum & Instruction Co... Discipline Committee Meetin... MSAAC General Body Commi...	19 School-Business Partnership ... Student Support & Services ... Regional Science and Engine...	20
22	23 Communications & Outreach...	24 Career and Technical Educati... Finance and Facilities Commi... 4th Tuesday School Board M...	25 Human Resources & Talent D...	26	27 STUDENT HOLIDAY (Planning...
29 Technology Steering Commit...	30	31	1	2	3

Broad Run District | Loudoun.gov/BroadRun
Board of Supervisors | Loudoun.gov/BOS

Supervisor Sylvia R. Glass | 1 Harrison Street, S.E., 5th Floor, P.O. Box 7000, Leesburg, VA 20177-7000

[Unsubscribe {recipient's email}](#)

[Update Profile](#) | [About Constant Contact](#)

Sent by sylvia.glass@loudoun.gov in collaboration with



Try email marketing for free today!

THIS IS A TEST EMAIL ONLY.

This email was sent by the author for the sole purpose of testing a draft message. If you believe you have received the message in error, please contact the author by replying to this message. Constant Contact takes reports of abuse very seriously. If you wish to report abuse, please forward this message to abuse@constantcontact.com.