

Loudoun County Sheriff's Office



Quarterly Meeting

Tuesday, December 5, 2023





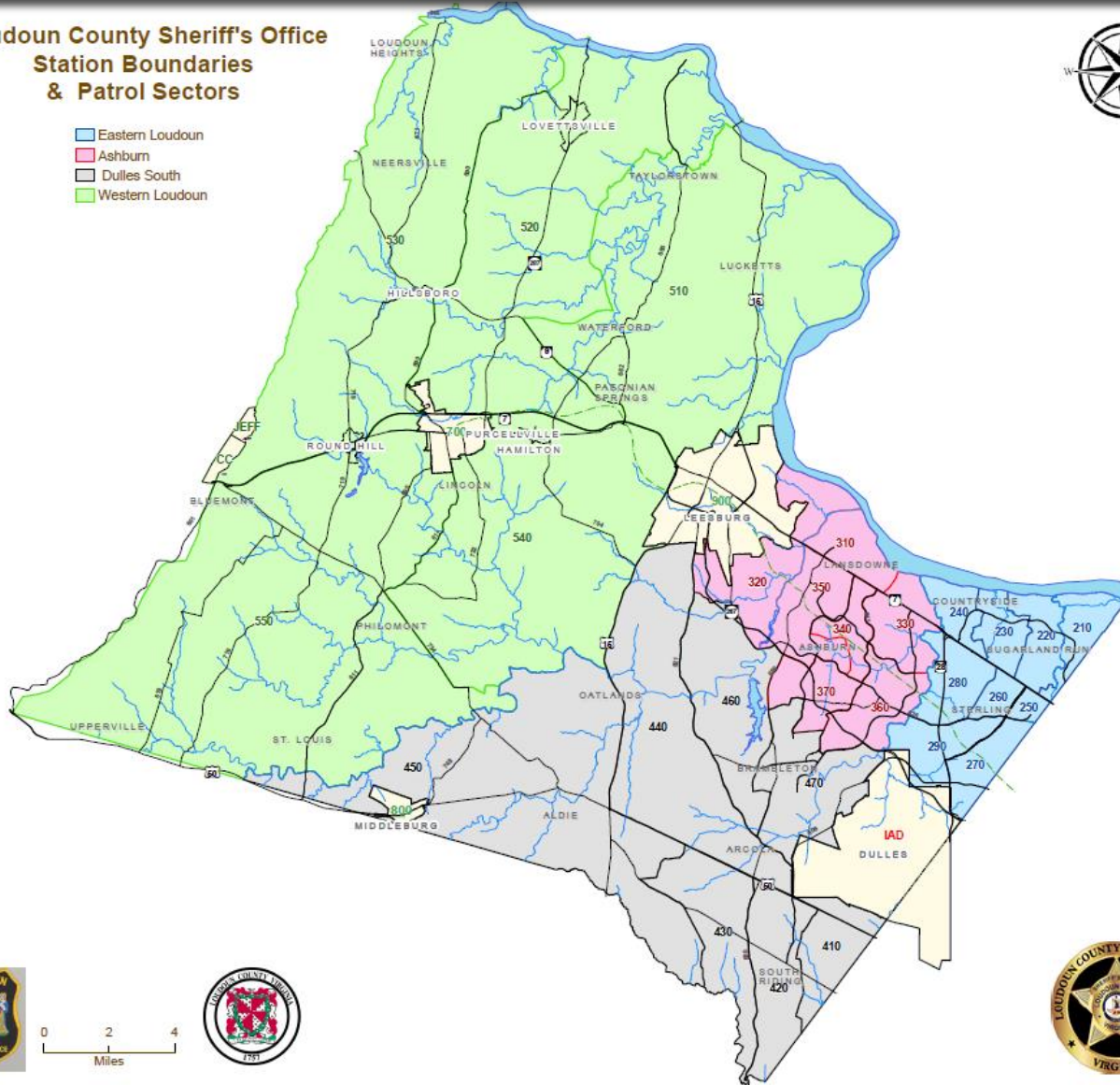
EASTERN LOUDOUN STATION

AGENDA

- **WELCOME**
- **STATION COMMANDER GREG ROGERS**
 - INTRODUCTIONS
 - STATION OVERVIEW
 - CALLS FOR SERVICE
- **STATION ENFORCEMENT TEAM OVERVIEW**
 - COMMUNITY OUTREACH
 - PROPERTY CRIMES
 - TRAFFIC CONCERNS
 - SIGNIFICANT CASES
- **ALERTS & SOCIAL MEDIA**
- **CLOSING INFORMATIONAL ITEMS**

**Loudoun County Sheriff's Office
Station Boundaries
& Patrol Sectors**

- Eastern Loudoun
- Ashburn
- Dulles South
- Western Loudoun



0 2 4
Miles



**EASTERN LOUDOUN
STATION**

POPULATION: 86,781

ASHBURN STATION

POPULATION: 102,896

DULLES SOUTH STATION

POPULATION: 131,502

**WESTERN LOUDOUN
STATION**

POPULATION: 54,349

Field Operations Division Overview

Mission: The Field Operations Division provides twenty-four-hour pro-active patrol of Loudoun County as well as reactive response to calls for service. It is also responsible for routine traffic enforcement and preservation of crime scene evidence. The patrol shifts are responsible for answering calls for service and general enforcement within the entire county.



Community



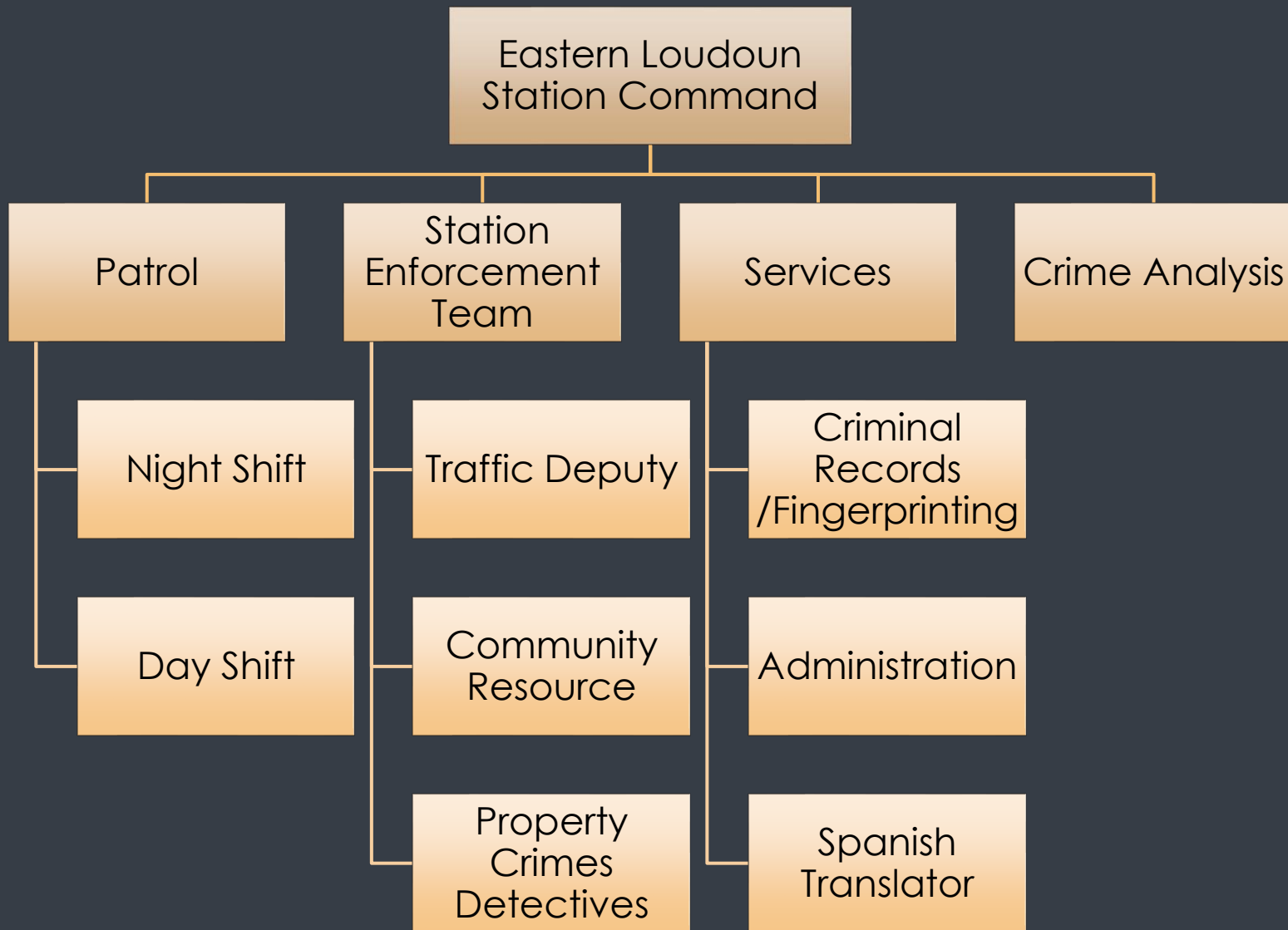
Service



Outreach



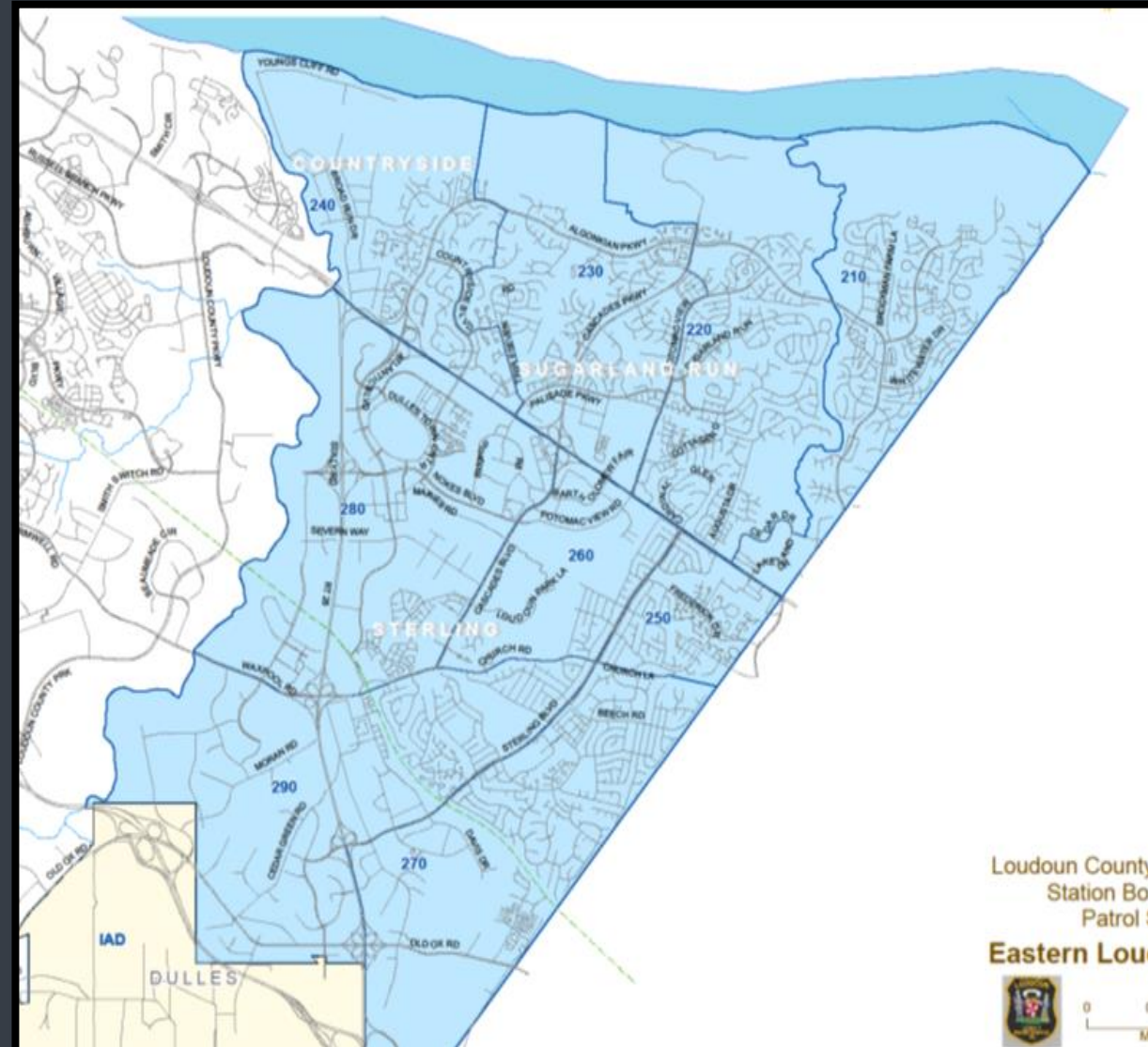
Eastern Loudoun Station Overview



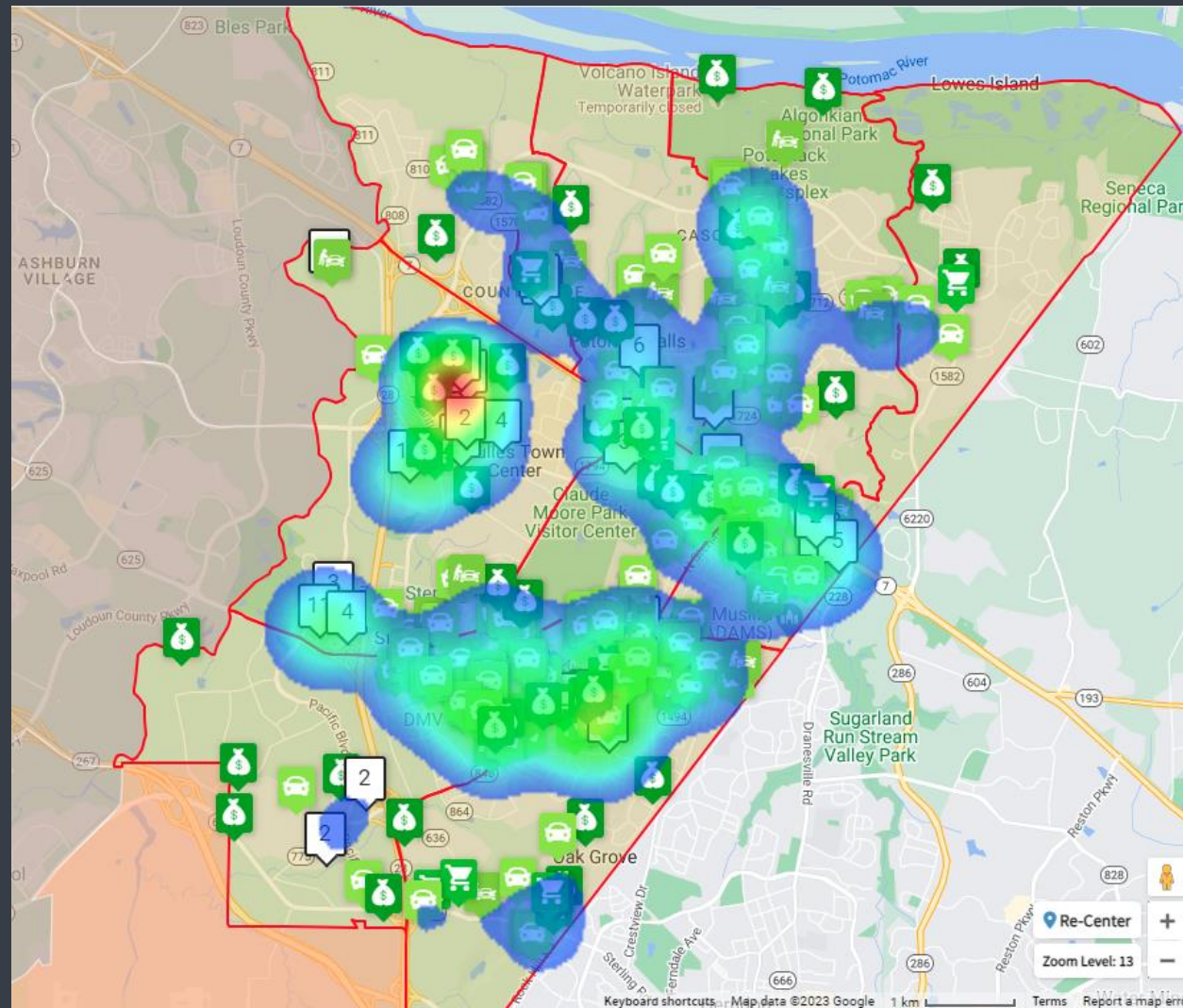
Calls For Service Statistics/Traffic Enforcement

Quarterly Calls For Service	
July - September 2023	
EASTERN LOUDOUN	11,643
COUNTYWIDE	38,902
% of Calls Countywide	30%

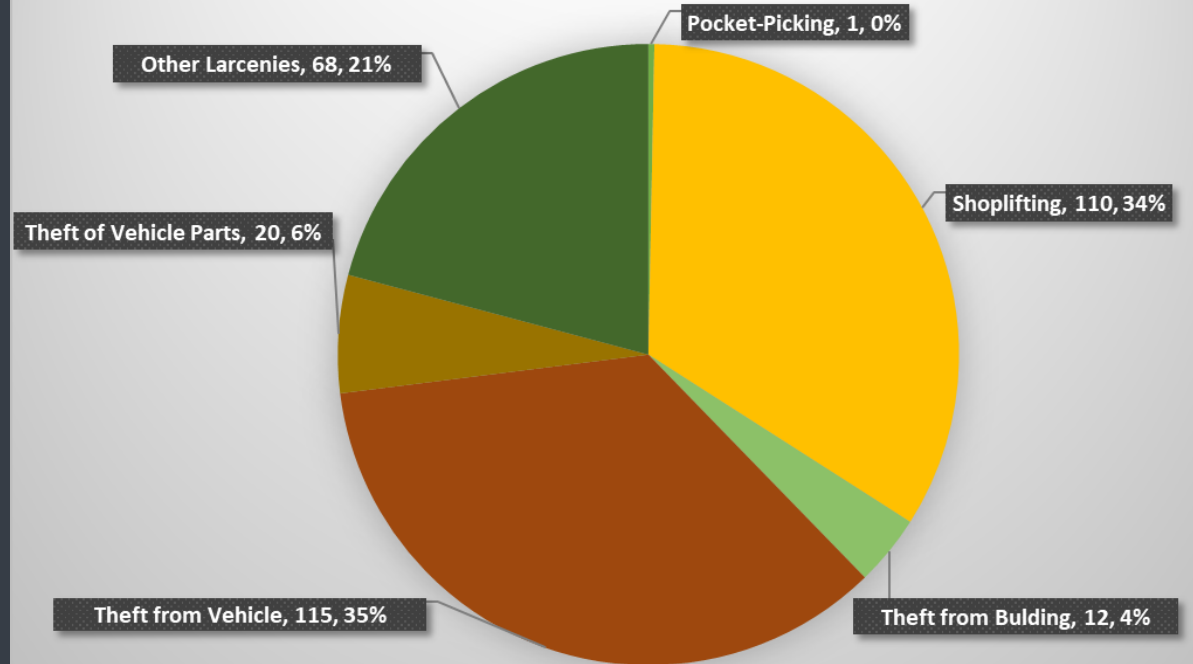
Origination of Calls for Service	
July – September 2023	
CITIZENS	6,645
DEPUTY	4,998



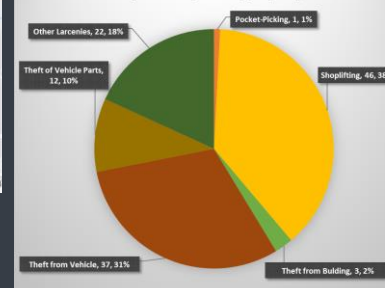
Larceny



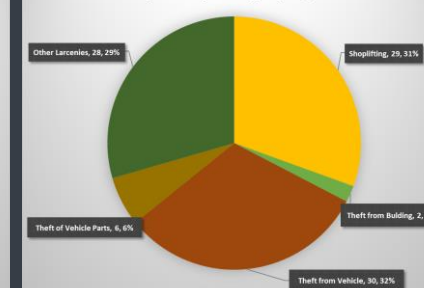
Larceny Cases by UCR Type Q3 (July-September) 2023



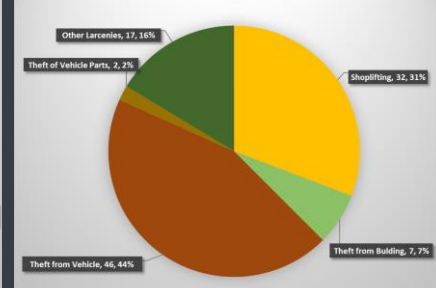
Larceny Cases by UCR Type | July 2023



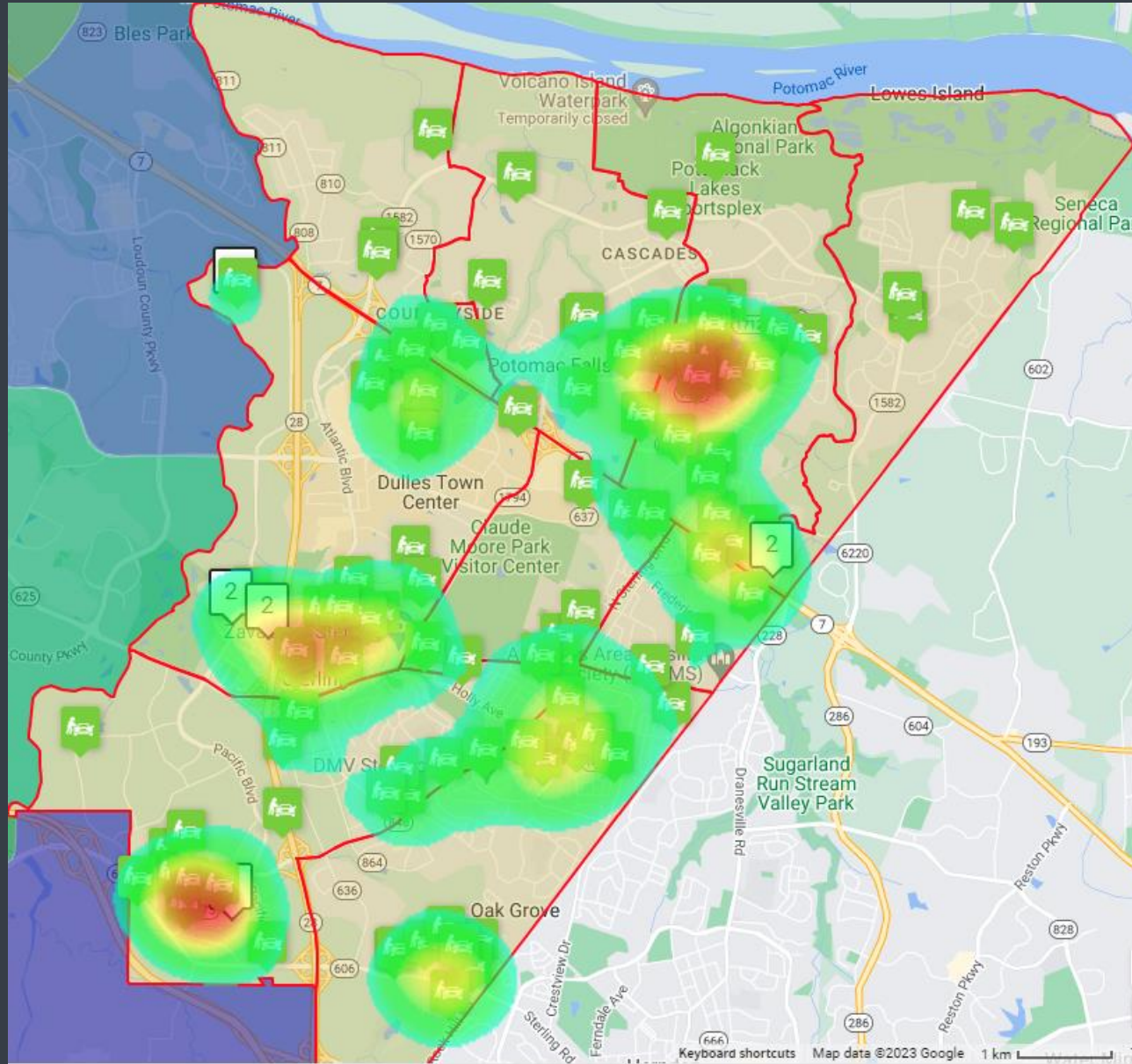
Larceny Cases by UCR Type | August 2023



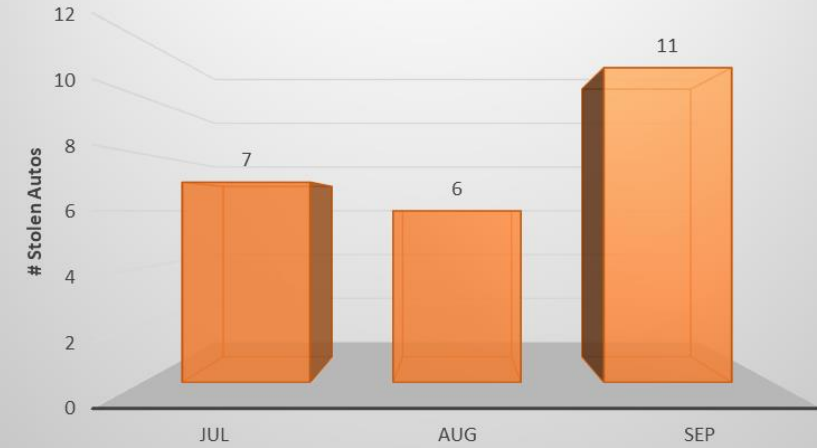
Larceny Cases by UCR Type | September 2023



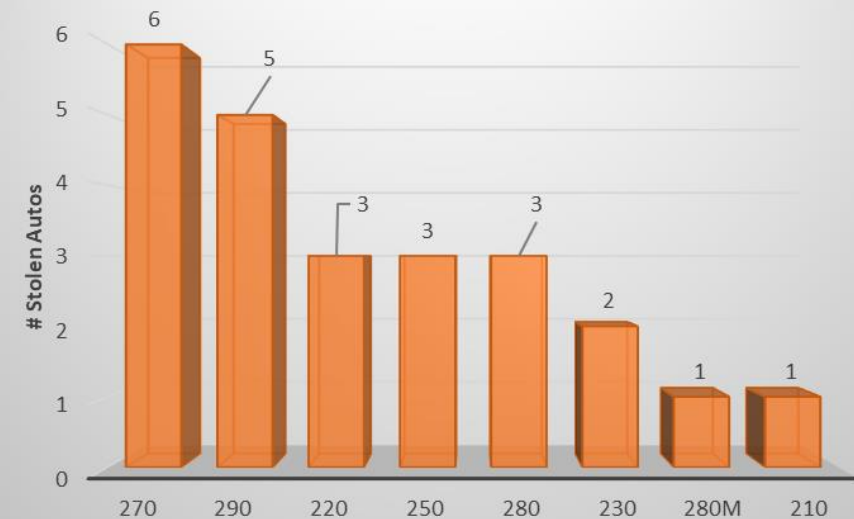
Larceny – Stolen Auto



Total Stolen Autos / Month
Q3 2023

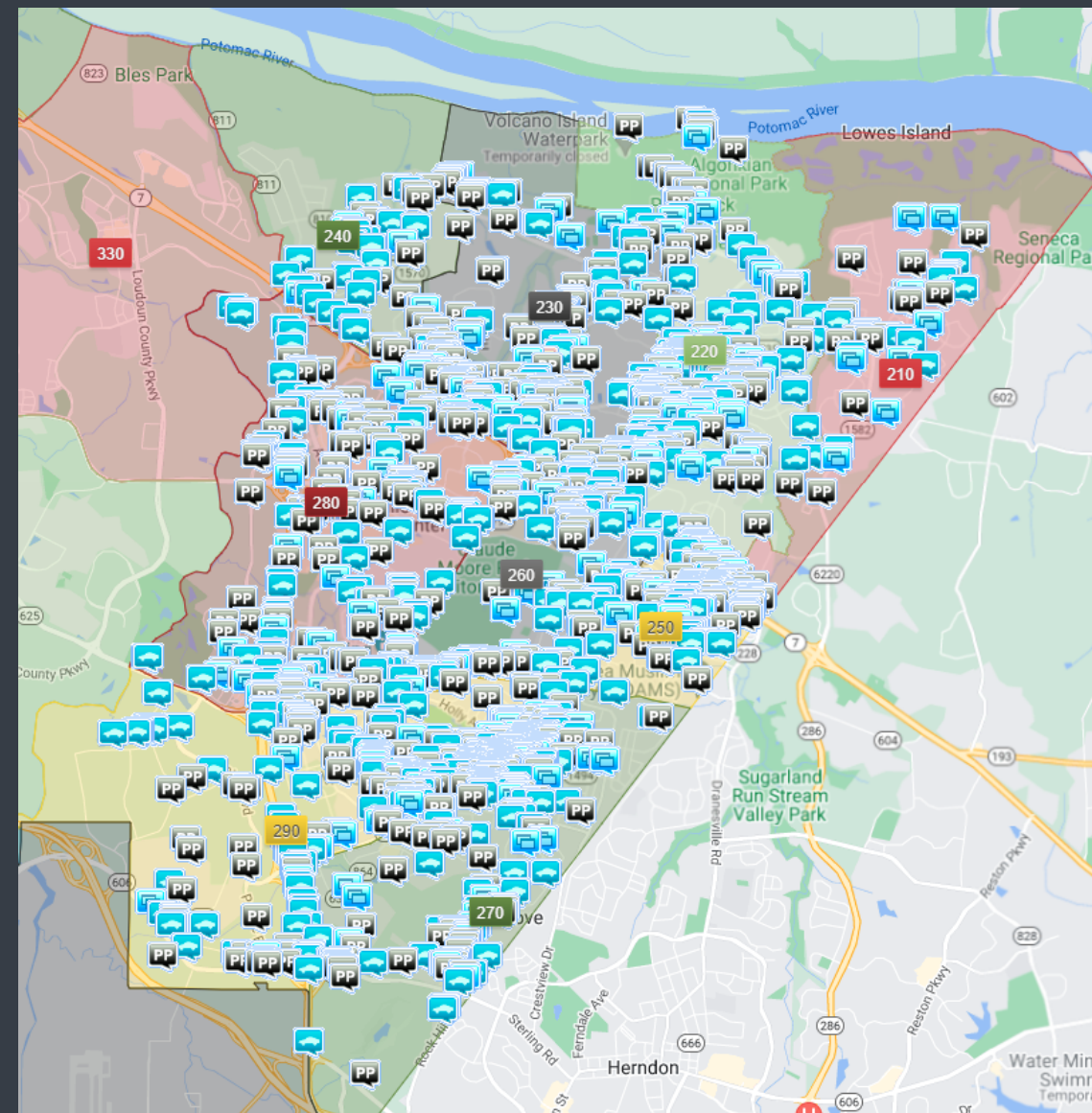


Total Stolen Autos by Beat
Q3 2023 (n=24)

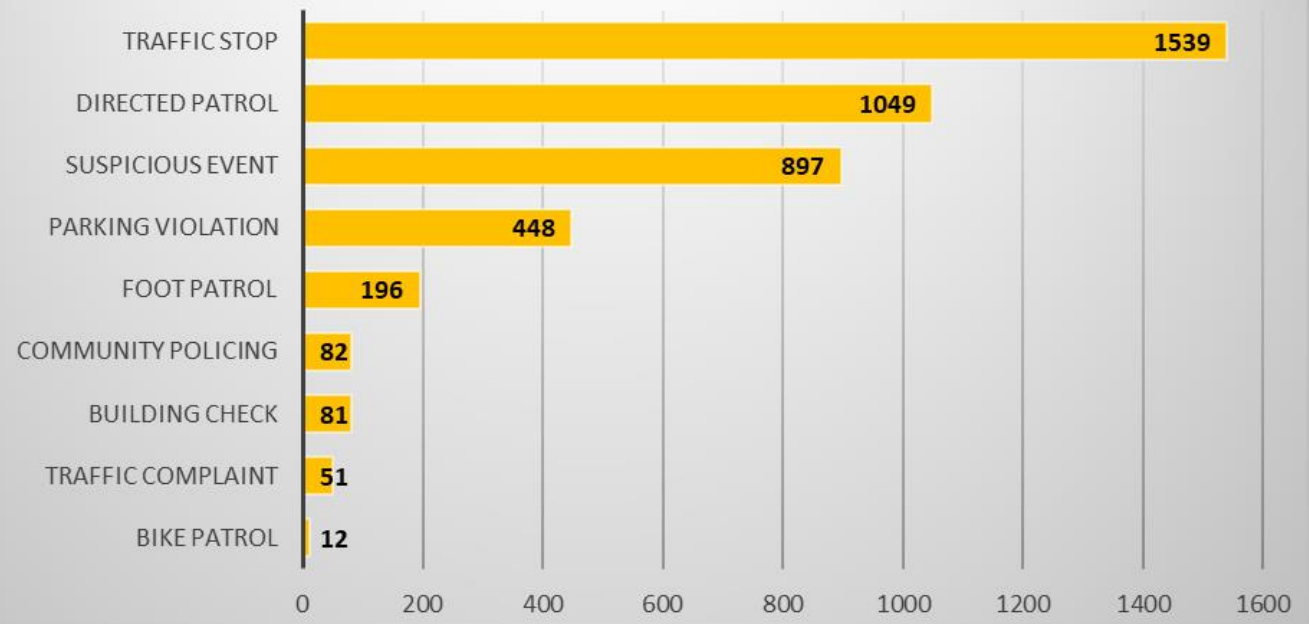


Proactive Patrol Activities

July 1 – September 30, 2023

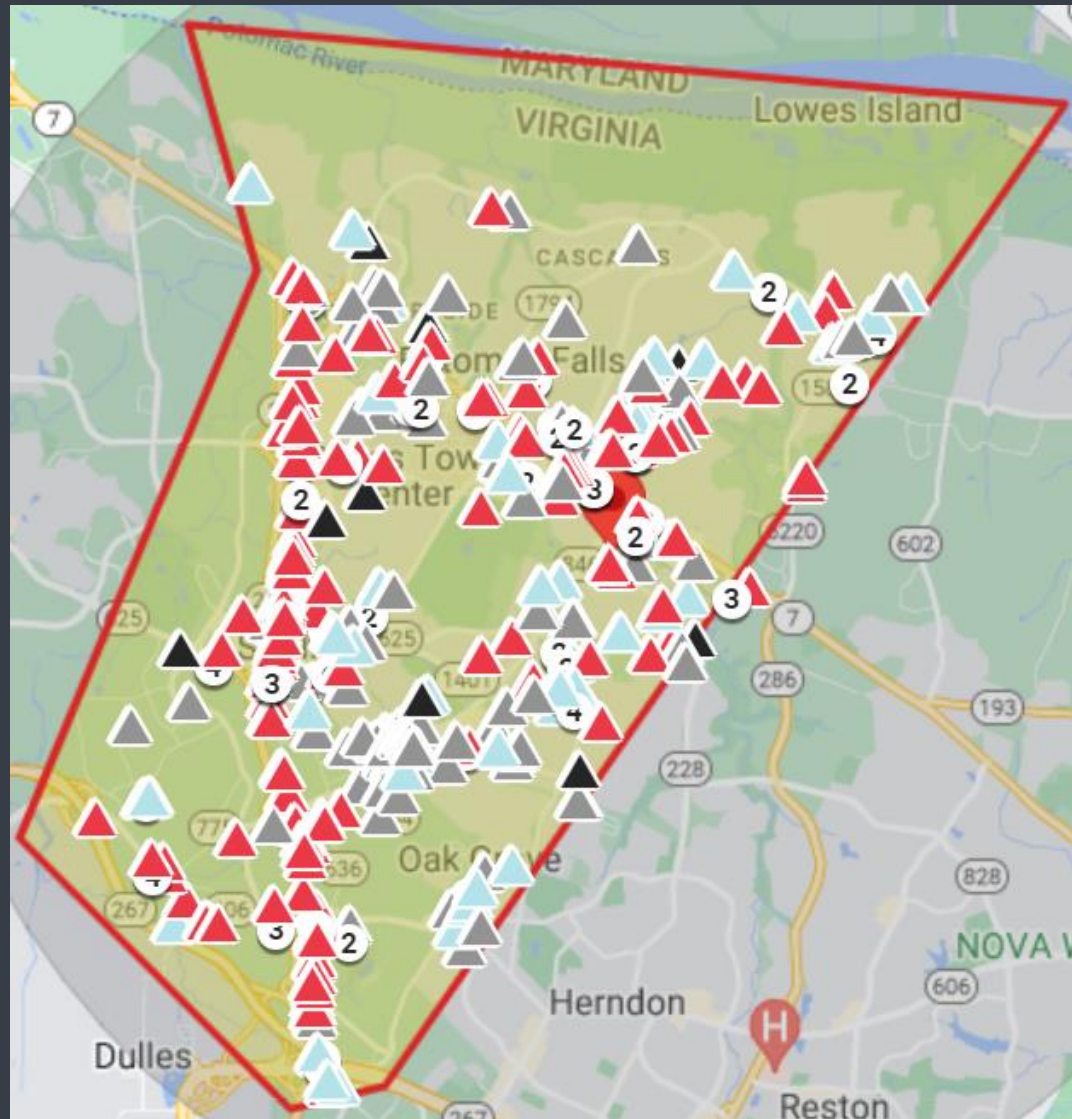


Proactive Patrols (n = 4,355)



Traffic Enforcement Activities

April 1 to June 30, 2023



Traffic Enforcement Map

Quarterly TRAFFIC / PARKING ENFORCEMENT ACTIONS

CITATION	953
PARKING	451
PHONE COMPLAINTS	52
ONLINE COMPLAINTS	63



**Speeding and
Parking Violations
are the top two
traffic issues.**



Station Enforcement Team

COMMUNITY RESOURCE SECTION

COMMUNITY OUTREACH

PROPERTY CRIMES SECTION

CASE REVIEW

TRAFFIC SECTION

TRAFFIC ENFORCEMENT

Community Resource



Unit Mission

- Develop relationships and partnerships with community members, organizations, and businesses
- Develop solutions for long term problems affecting communities
- Address community concerns

Quarterly TRAFFIC / PARKING ENFORCEMENT ACTIONS

CITATION	30
WARNING	9
PARKING	97
COMMUNITY PATROLS	159



DFC. Scott Atchison
Community Resource Deputy
(571) 246-7886
Scott.Atchison@loudoun.gov

Community Resource Deputies

Unit Make up

- Flexible schedules to meet service demands
- Work as a station enforcement team with Property Crimes Detectives and Traffic Deputy

Services

- Long term investigations
- Building Safety Assessments (CPTED – Community Policing Through Environmental Design)
- Community Events
- HOA meetings



Community Outreach



Traffic Deputy

New Position added in FY23

Unit Mission

- Receive, respond, and monitor community traffic complaints
- Conduct traffic and parking enforcement
- Conduct traffic analysis & informal speed studies
- Coordinate response with partner organizations (VDOT, VSP)
- Develop solutions for long term problems



DFC. Richard Dau
Traffic Deputy

Richard.Dau@loudoun.gov



Quarterly TRAFFIC / PARKING ENFORCEMENT ACTIONS	
CITATION	334
WARNING	47
COMPLAINTS	63
TRAFFIC STOP	296
TIME SPENT (HRS)	145.5

Traffic Complaint Form
QR code





Property Crimes Detectives



Det. James Breeden

Station Detective

James.Breeden@loudoun.gov



Det. Justin Denton

Station Detective

Justin.Denton@loudoun.gov



Det. Peter Roque

Station Detective

Peter.Roque@loudoun.gov

SIGNIFICANT CASES

Commercial Burglary SO230016976



Charges:

Burglary (felony)

SIGNIFICANT CASES

Details



AN UNKNOWN BLACK MALE FORCED ENTRY THROUGH THE REAR DOOR OF THE EL CHEF LATINO RESTAURANT. AS THE MALE MADE HIS WAY THROUGH THE RESTAURANT, HE MOVED THE INTERNAL SECURITY CAMERAS SO HIS ACTIONS WOULD NOT BE DOCUMENTED. APPROXIMATELY \$3000 IN CURRENCY WAS TAKEN FROM THE CASH REGISTER. DET. ROQUE WORKED WITH PATROL TO IDENTIFY THE SUSPECT AS TREVON SMITH. SMITH WAS ALSO IDENTIFIED AS THE SUSPECT IN THE LARCENY OF THE STERLING COMMUNITY CENTER'S PLAYSTATION 5 (SO230016897). SMITH WAS ARRESTED ON DET. ROQUE FELONY BURGLARY WARRANT AND SENTENCED TO 12 MONTHS INCARCERATION, NONE SUSPENDED, AND RESTITUTION.

SIGNIFICANT INCIDENTS

UPDATE:

Loudoun County, VA (September 3, 2023) – The Loudoun County Sheriff's Office (LCSO) has arrested a Sterling man in the fatal shooting that left an eighteen-year-old dead.

On Friday, September 1, at approximately 10:33 p.m., LCSO deputies responded to the 21000 block of Stanford Square in Sterling, for a report of a shooting. Upon arrival, deputies located, Alex Omar Cartagena Jr., age 18, of Sterling, suffering from gunshot wounds. Immediate life-saving measures were initiated, and EMS provided aid to the victim. Despite the best efforts, the victim was pronounced deceased at the scene.

Yesterday afternoon, at approximately 1:20 p.m. deputies arrested Jaylin E. O'Brien, age 18, of Sterling, who was charged with Second Degree Murder, Attempted Second Degree Murder, and two counts of Use of a Firearm in the Commission of a Felony. O'Brien was transported to the Loudoun County Adult Detention Center where he is being held without bond.



SIGNIFICANT INCIDENTS

Loudoun County, Virginia (September 19, 2023) – The Loudoun County Sheriff's Office is seeking the assistance of the community in gathering information related to a serious vehicle crash that occurred yesterday at 6:52 p.m. on Route 28 southbound near Sterling Boulevard.

A preliminary investigation revealed that a black Nissan Altima was being driven southbound on Route 28 when it struck a semi-truck, causing the truck to overturn and catch on fire. A blue Toyota Prius was also struck by the Nissan.

The driver of the semi-truck was pulled from the truck by citizens and subsequently transported to an area hospital with life-threatening injuries.

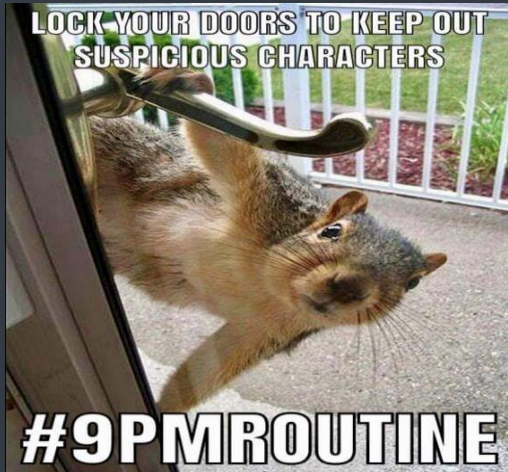
. The drivers of the Altima and Prius were transported to area hospitals and have since been released. The cause of the crash is under investigation, but speed is believed to be a factor.

The driver of the Altima, Jose A. Padilla Espinosa, 18, of no fixed address, was arrested for Forged Tags and Driving Without Insurance, and transported to the Loudoun County Adult Detention Center where he is being held on no bond. Additional charges are pending.



REMINDER

The Loudoun County Sheriff's Office #9PMRoutine



- LOCK PERSONAL VEHICLES
- SECURE VALUABLES IN VEHICLE TRUNK
- CLOSE/LOCK RESIDENTIAL GARAGES AND DOORS
- SAFELY SECURE ALL FIREARMS * NOT IN VEHICLES
- AND.....PLEASE SHARE THE #9PMROUTINE INFORMATION WITH YOUR COMMUNITY TO HELP PREVENT PROPERTY CRIMES IN YOUR NEIGHBORHOOD!

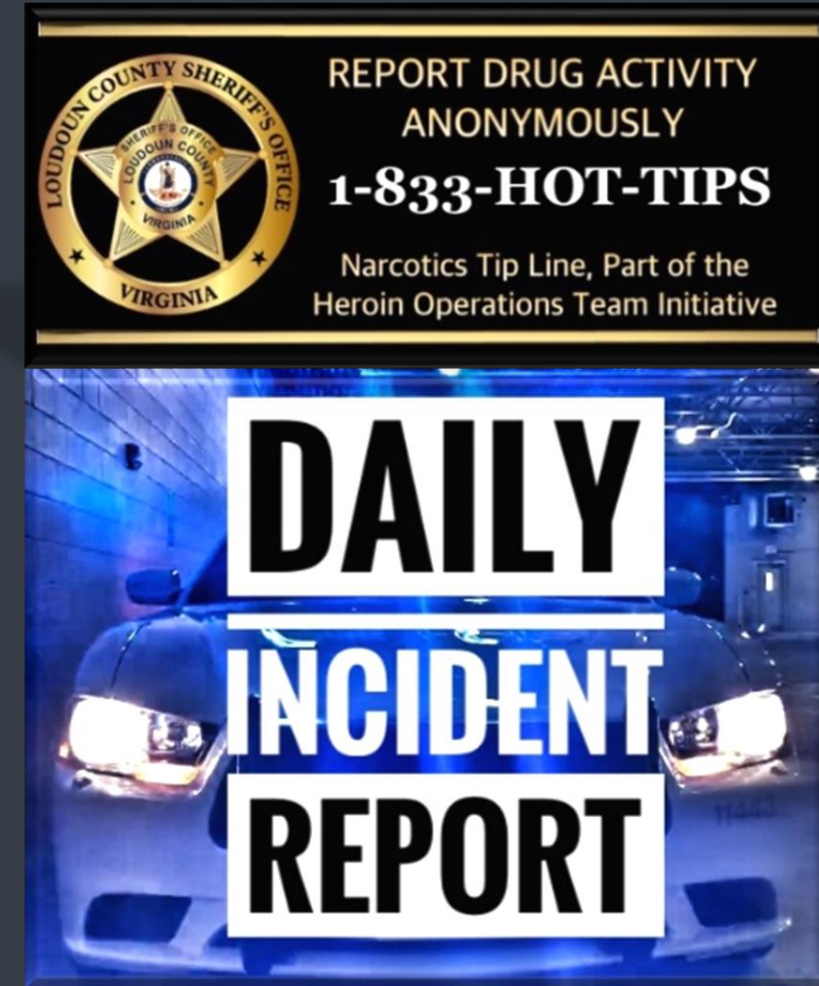


NON-EMERGENCY (703) 777-1021
TRAFFIC HOTLINE (703) 771-5798
NARCOTICS TIP LINE (703) 779-0552
CRIME SOLVERS (703) 777-1919



Stay Connected

- Inform You of Public Safety Matters Directly Impacting Your Community
- Get to Know your Local Deputies
- Report a Crime or File a Traffic Complaint
- Receive Resident Feedback
- Stay in the 'Loop' about Crime & Safety Issues in Your Community
- Real-Time Alerts



LCSO Medication Disposal Drop Box

Ashburn Station-

20272 Savin Hill Drive, Ashburn

Dulles South Public Safety Center-

25216 Loudoun County Parkway,
Chantilly

Eastern Loudoun Station-

46620 East Frederick Drive, Sterling

Leesburg Public Safety Center-

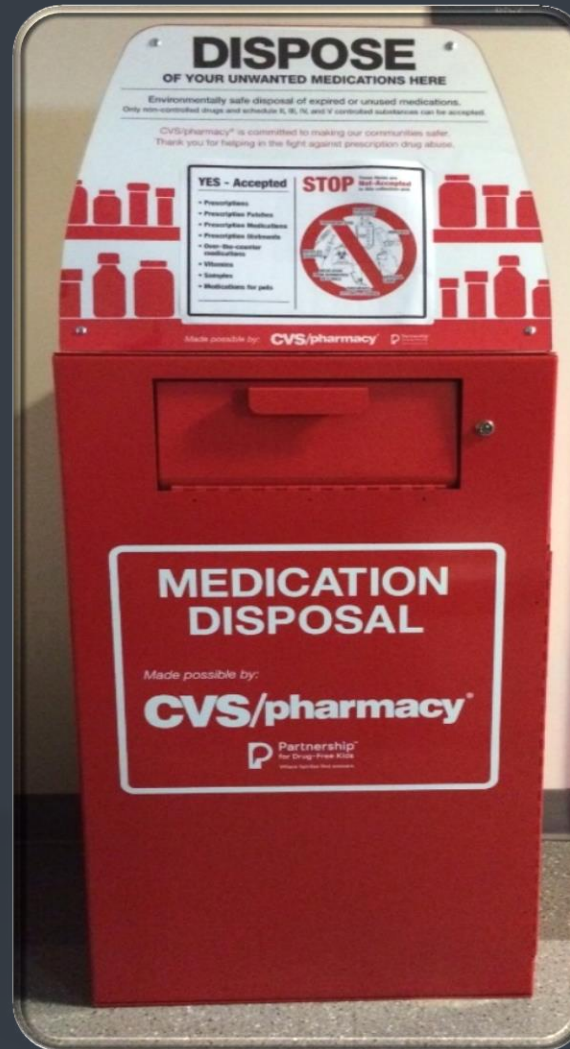
65 Plaza Street NE, Leesburg

Shenandoah Building-

102 Heritage Way NE, Leesburg

Western Loudoun Station-

47 W. Loudoun Street, Round Hill



YOU MAY DROP OFF:

- Prescription Medications
 - Prescription Patches
- Over the Counter Medications
 - Vitamins
 - Sample Medications
 - Medications for Pets

THE FOLLOWING ARE NOT ACCEPTED:

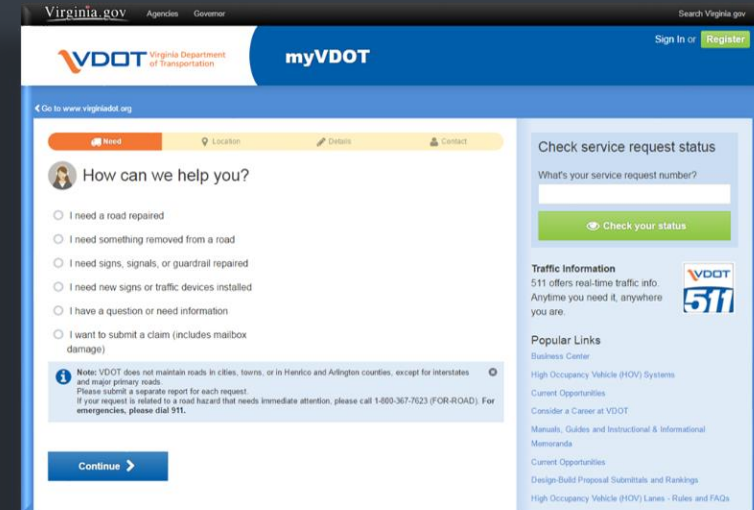
- Needles (Sharps)
- Liquid Medications
- Aerosol Containers
 - Inhalers
- Ointments and Lotions
- Medications from Businesses

my.VDOT.Virginia.gov

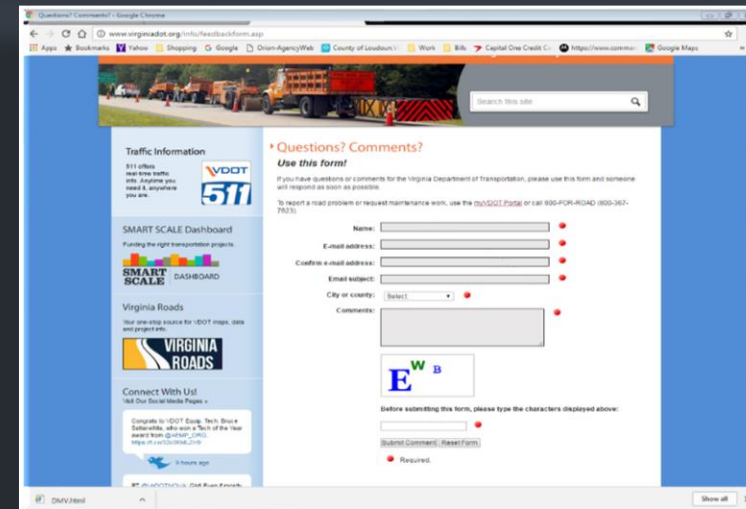
Northern Virginia District Office
14685 Avion Parkway
Chantilly, Virginia 20151
703-383-2000
www.VirginiaDOT.org

Work Requests

Just submit a **work request** or
call 800-367-ROAD (7623)



The screenshot shows the myVDOT homepage. At the top, there's a navigation bar with "Virginia.gov", "Agencies", "Governor", and a search bar. Below this is the myVDOT logo and a "Sign In or Register" button. The main content area has a "How can we help you?" section with radio buttons for various requests: "I need a road repaired", "I need something removed from a road", "I need signs, signals, or guardrail repaired", "I need new signs or traffic devices installed", "I have a question or need information", and "I want to submit a claim (includes mailbox damage)". A note states that VDOT does not maintain roads in cities, towns, or in Henrico and Arlington counties, except for interstates and major primary roads. A "Continue" button is at the bottom. On the right, there's a "Check service request status" section with a text input for the service request number and a "Check your status" button. Below this is "Traffic Information" with a 511 logo and "Popular Links" including Business Center, High Occupancy Vehicle (HOV) Systems, Current Opportunities, Consider a Career at VDOT, Manuals, Guides and Instructional & Informational Memoranda, Design-Build Proposal Submittals and Rankings, and High Occupancy Vehicle (HOV) Lanes - Rules and FAQs.



The screenshot shows the VDOT work request form. At the top, there's a header with "Questions? Comments?" and a "Use this form!" section. The form includes fields for Name, E-mail address, Confirm e-mail address, Email subject, City or county, and Comments. A "Submit" button is at the bottom. On the left, there's a sidebar with "Traffic Information", "SMART SCALE Dashboard", "Virginia Roads", and "Connect With Us". The "SMART SCALE Dashboard" section mentions funding the right transportation projects. The "Virginia Roads" section mentions the Virginia Roads website. The "Connect With Us" section mentions the VDOT Social Media Pages. The "Submit" button is labeled "Submit Comment - (Reset form)". A note at the bottom says "Before submitting this form, please type the characters displayed above:" followed by a CAPTCHA image.

Narcan Training

<https://www.loudoun.gov/revive>



Opioid Overdose & Naloxone Education for Virginia

Learn the signs of an opioid overdose emergency and how to respond with naloxone, a life-saving medication that can reverse an opioid overdose.



Watch the 6-minute Rapid REVIVE! video &
Receive free naloxone nasal spray



Available anytime.
No registration necessary.
Free and confidential.
loudoun.gov/rapidrevive



Thank you for your continued support !



1st Lieutenant Mel Holmes
Assistant Station Commander
Serving since 2008
(571) 42-1410
Mel.Holmes@loudoun.gov



Captain Greg Rogers
Station Commander
Serving since 2008
(571) 528-7983
Gregory.Rogers@loudoun.gov



Sergeant Blake Isham
Station Sergeant
Serving since 2007
(571) 528-7959
Jason.Isham@loudoun.gov