



## Weekly Newsflash NOVEMBER 17, 2023

### Loudoun County Hypothermia Prevention Shelter Now Open

The Loudoun Hypothermia Prevention Shelter opened on Wednesday, November 15, 2023, for single adults aged 18 and older in the community who are experiencing a housing crisis resulting in homelessness.

This temporary shelter, which provides a warm indoor sleeping environment and meals, will be open from 5:00 p.m. to 8:30 a.m., seven nights a week through March 31, 2024.

The **Hypothermia Prevention Shelter is located at 16450 Meadowview Court in Leesburg**, just past the Loudoun Homeless Services Center. The shelter had been previously co-located within the Loudoun Homeless Services Center, which had a limited capacity. This new temporary location allows for additional capacity, while remaining in close proximity to daytime services, if needed.

A graphic for the Hypothermia Prevention Shelter. It features a light blue header with the text "HYPOTHERMIA PREVENTION SHELTER" in dark blue. Below this, the dates "November 15, 2023 - March 31, 2024" are shown in red. Underneath, it says "Check in at:" followed by "Loudoun Homeless Services Center" and "19520 Meadowview Court, Leesburg" in black. To the right of the address is a blue snowflake icon and a red thermometer icon. Below the address is the Loudoun County Virginia logo. At the bottom, a light blue box contains the website address "loudoun.gov/HomelessServices" in dark blue.

For daytime drop-in services, individuals may visit the Loudoun Homeless Services Center. The center is located at 19520 Meadowview Court in Leesburg and is open every day from 8:30 a.m. to 5:00 p.m. The center provides meals, laundry and shower facilities as well as information on other community resources, such as food, clothing, medical care, mental health care, public benefits, obtaining an ID and employment opportunities.

Free bus transportation to the shelter will be provided daily at the times and locations listed below:

- Sterling: Loudoun County Transit Bus Route 82 bus stop across the street from the William Watters House, 22365 Enterprise St. in Sterling. Pickup time is 5:00 p.m.
- Leesburg: The front of the Shenandoah Office Building, 102 Heritage Way NE in Leesburg. Pickup time is between 5:30 – 6:00 p.m.

More information about transportation is available by calling the Loudoun Homeless Services Center at [703-771-5429](tel:703-771-5429).

[Read the Full Press Release](#)

## Loudoun County Hires Nonprofit Loudoun Cares to Administer Emergency Eviction Relief Program



The graphic features the Loudoun County Virginia logo at the top center. Below it, the text reads: **EMERGENCY EVICTION ASSISTANCE PROGRAM** in large green letters. Underneath, in smaller white text, it says "FOR RESIDENTS ADVERSELY IMPACTED BY THE COVID-19 PANDEMIC." Below that, in white text, it says "ELIGIBLE RESIDENTS MAY APPLY BEGINNING 12:00 P.M., MONDAY, NOVEMBER 20, 2023." At the bottom, it says "Learn More: [loudoun.gov/RentAssistance](https://loudoun.gov/RentAssistance)".

Monday, November 20, 2023, eligible Loudoun County residents may apply for emergency eviction assistance by submitting an online pre-screening application through the nonprofit Loudoun Cares.

The program has been commissioned by the Board of Supervisors as

part of the county's efforts to distribute available funds from the American Rescue Plan Act to address lingering economic impacts from the COVID-19 pandemic. The county is using a portion of the available funds for various housing programs, including one that is intended to keep eligible residents who are facing immediate eviction in their homes—particularly during the cold weather months—by paying outstanding rent obligations and fees associated with the eviction process.

Loudoun has allocated \$500,000 for this one-time, emergency assistance program, which includes a contract with Loudoun Cares to administer the program. The number of households that will receive assistance will vary based on several factors. Loudoun Cares will sign up and recommend financial assistance for as many households as possible. The county will make payments directly to landlords on behalf of approved applicants.

The program will end by January 31, 2024, or sooner if funds are exhausted.

[Read the Full Press Release for More Details](#)

## Final Loudoun Household Hazardous Waste Event of 2023 is November 18 in Sterling

The final Loudoun County Household Hazardous Waste (HHW) collection event for 2023 is scheduled for **Saturday, November 18, 2023, 8:30 a.m. - 2:30 p.m.**, at Claude Moore Park, 46150 Loudoun Park Lane, Sterling (at the end of Loudoun Park Lane).

Loudoun residents are welcome to bring HHW from their homes to the event, free of charge.

### Household Hazardous Waste Event

Sat., Nov. 18, 2023  
Claude Moore Park  
46150 Loudoun Park Lane  
Sterling

8:30 a.m. - 2:30 p.m.



LOUDOUN  
COUNTY  
VIRGINIA

[loudoun.gov/hhw](http://loudoun.gov/hhw)

### Event Procedures

Because of safety concerns related to the handling of various types of hazardous materials, the events feature a drive-through process in which residents are

instructed to remain in their vehicles and allow event staff to unload any items accepted for disposal. To ensure everyone remains in their vehicle while at the point of service, items must not be in sealed or tied plastic bags. Staff are not allowed to open any plastic bag containing HHW.

Future Loudoun County HHW Events (All events are from 8:30 a.m. until 2:30 p.m.)

The November 18 collection is the final HHW event of 2023. The next HHW event will be held in March 2024. The 2024 schedule will be posted at [loudoun.gov/hhw](https://loudoun.gov/hhw) once available.

### HHW Contact Information

For more information about the Loudoun County Household Hazardous Waste Program, call [703-771-5500](tel:703-771-5500) or visit [loudoun.gov/hhw](https://loudoun.gov/hhw).

## Food Waste Composting Drop-Off Center Opens at Loudoun County Landfill



**Food Waste Composting  
Drop-Off Center Now Open at  
Loudoun County Landfill**

**Bring your household food  
scraps to the landfill.  
21101 Evergreen Mills Road  
Leesburg**

**Find details at:  
[loudoun.gov/recycle](https://loudoun.gov/recycle)**

Back in 2021, I introduced a Board Member Initiative to research establishing a County composting program and implement a pilot version to test the waters.

A proposal was developed & approved in late 2022, and in early 2023, expanded composting & recycling capabilities were

approved as part of the [Loudoun County Government Energy Strategy](#).

I am very excited to announce that the Loudoun County landfill is now accepting household food scraps at the new Food Waste Composting Drop-Off Center located at the Loudoun County landfill. The program is intended for residents who are interested in composting their household food scraps such as fruits and vegetables, meats, dairy products, pasta, eggshells and coffee grounds.

Quantities accepted are limited to one 5-gallon container or an equivalent amount, per customer, per week.

Under the pilot program, Key Compost will collect the material for processing at its composting facility in Frederick, Maryland.

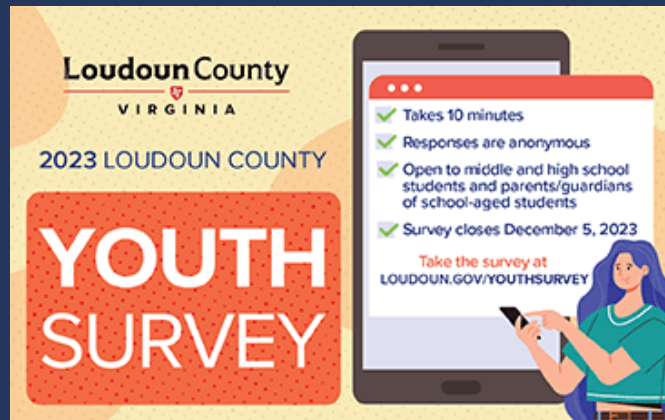
The program was recently initiated by the Loudoun County Board of Supervisors in an effort to create local composting opportunities for the community. Results of the pilot program, including the level of public interest, will be evaluated for possible program expansion to additional locations.

The food waste composting drop-off center is located at the Landfill Recycling Center at the Loudoun County Solid Waste Management Facility, 21101 Evergreen Mills Road in Leesburg. Operating hours are Monday through Saturday, 8:00 a.m. to 4:00 p.m. More information about the services available at the landfill may be found at [loudoun.gov/landfill](https://loudoun.gov/landfill).

Visit [loudoun.gov/recycle](https://loudoun.gov/recycle) for more information about the food waste composting program or call 703-771-5500.

## REMINDER: 2023 Survey of Youth & Parents to Help Young People Thrive

The Loudoun County Advisory Commission on Youth (ACOY) is conducting a survey to gather information that will help inform county leaders when making decisions about services and programs designed to meet the needs of young people in the community.



The survey is intended for parents of elementary, middle and high-school-aged students, and youth in middle and high school. The survey is expected to take about ten minutes to complete. The survey covers four topic areas:

- Activities and interests.
- Drug and alcohol use.
- Mental health and stress management.

- Online access and activity.

Responses are anonymous. Participants are not required to provide any individually identifying information such as their name, home address, birth date, IP address, etc.

- [Take the survey in English](#)
- [Take the survey in Spanish](#)

The survey is open through Tuesday, December 5, 2023. Information gathered from the survey will be used to inform ACOY's "State of Loudoun Youth" annual report to the Loudoun County Board of Supervisors.

[Learn More About ACOY and the Youth Survey](#)

## Loudoun County Seeks Comments about Accessibility for ADA Self-Evaluation and Transition Plan



Loudoun County is asking for feedback from members of the public about the accessibility of county services for people with disabilities, including county-sponsored programs, activities, facilities and website. The survey is part of an update to the county's Americans with Disabilities Act (ADA) Self-Evaluation and Transition Plan.

The survey, which is one part of the county's self-evaluation, will help the county identify any barriers impeding the participation in the county's programs, services and activities by people with disabilities. This includes, but is not limited: to obtaining a permit, paying a fee, participating in a recreational program and attending a public meeting. The responses to the survey will also help inform the county's Transition Plan that addresses any barriers to improving access for individuals with disabilities.

The survey will be open through January 2, 2024. Anyone who requires the survey in an alternative format may call [703-777-0113](tel:703-777-0113) or [send an email](#).

More information about the county's ADA Self-Evaluation and Transition Plan as well as links to the survey and to sign up for email and text updates on the project, can be found at [loudoun.gov/adastudy](https://loudoun.gov/adastudy).

## **Silver Line Metrorail, Bus Services in Operation in Loudoun for One Year**

One year ago, Loudoun County Transit phased in the largest update to its bus system in over a decade in concert with the opening of the Metrorail's Silver Line extension, which includes the Dulles International Airport, Loudoun Gateway and Ashburn Metro stations in Loudoun County, and



Innovation Center, Herndon and Reston Town Center in Fairfax County. The Silver Line bus service currently runs 21 bus routes and has 156 bus stops, improving overall service to and from Silver Line Metrorail stations. To date, the Silver Line bus routes have provided service for over 72,000 passengers.

In October 2023, a major milestone was reached with Metrorail service topping one million customers at the Dulles Airport Metrorail Station since the Silver Line extension opened. The six new Silver Line stations have provided service to more than three million riders during that time, according to figures from the Washington Metropolitan Area Transit Authority (WMATA) and the Metropolitan Washington Airports Authority.

### **How to Use Silver Line Metrorail and Bus Services in Loudoun**

Here are four things to know about using Silver Line Metrorail and Bus services in Loudoun:

- **Three Stations:** Loudoun County has three Metrorail stations: Ashburn, Loudoun Gateway and Washington Dulles International Airport. More information about each station, including video tours, may be found at [loudoun.gov/silverlinestations](https://loudoun.gov/silverlinestations).
- **Metro Parking:** Need to park your car or bike before you hop on a train? The Metro parking garages in Loudoun feature electric vehicle charging stations, bike racks, daily parking and reserved parking. Loudoun County operates the Ashburn South and Loudoun Gateway garages. The Ashburn North garage, which is operated privately, is also an option for commuters. Information about [parking at Loudoun's Metro station is online](#).
- **Silver Line Bus Routes:** Loudoun County Transit runs bus service that connects riders with Metrorail, including to and from Loudoun Park and Ride lots. It costs \$1.00 to ride all Silver Line bus routes. For additional details about each route, including the location of bus stops, times of routes and maps of routes, visit [loudoun.gov/silverlinebusroutes](https://loudoun.gov/silverlinebusroutes).
- **Plan Your Trip:** Riders can plan their trips with online tools, including Google Maps, Transit app, and WMATA's Metro Trip Planner, which includes Metrorail service and bus service to and from Metrorail stations and other regional resources. You can also use the planner to calculate your fare, which is based on the service, ride length, day and time you ride. Purchase a [SmarTrip®](#) card, which is the easiest method to pay Metrorail fares. More information about [planning your trip is online](#).

### **More Information**

Visit [loudoun.gov/riderinformation](https://loudoun.gov/riderinformation) for details about Loudoun County Transit, including commuter, local-fixed route, Metro connection and paratransit bus services; planning a trip; service alerts; and how to ride safely.

Everything commuters need to know about accessing and using Metro from Loudoun County is posted at [loudoun.gov/silverline](https://loudoun.gov/silverline).

---



## **Deadline for Developers to Respond to Request For Expressions of Interest Extended to Dec. 15**



Loudoun County has issued a Request For Expressions of Interest (RFEI) for the development of county-owned land for attainable housing. The property is about 4.86 acres and was formerly the Ashburn North Park and Ride

lot. The deadline for applicants to submit a response to the RFEI has been extended to 4:00 p.m., December 15, 2023.

The purpose of the RFEI is to:

- Gauge interest from the affordable housing development community.
- Gather information to establish project requirements for the next phase of the procurement process.
- Collect ideas from potential developers with the interest, capacity, and qualifications to design, plan, finance, construct, and operate/manage a desirable 100 percent attainable or a mixed-income housing project within the defined confines of county-owned land.

This is a Request for Expressions of Interest only and no award will result from the RFEI.

### **Housing Definitions and Needs**

Affordable housing, as the term is defined in the [Virginia Code, Section 15.2-2201](#), consists of housing units to serve households earning up to 80% of Area Median Income (AMI). Attainable housing, as the term is defined in the [Loudoun County's Unmet Housing Needs Strategic Plan \(UHNSP\)](#), consists of housing units to serve households earning up to 100% of AMI. The proposed development must address [Loudoun County's 2019 Comprehensive Plan](#) and the

UHNSP with the goal to provide attainable housing to households earning up to 100% of AMI.

Specific to this RFEI, the UHNSP aims to “secure land resources needed to address unmet housing needs,” and to “use public land and facilities for housing.” Loudoun County can consider the use of public land in a new way and consider making it available for the development of attainable housing. By allowing mixed-income, high-density development on high value public sites, Loudoun County can create opportunities for affordability housing and attainable housing; and ensure diverse, inclusive communities.

### **How to Apply**

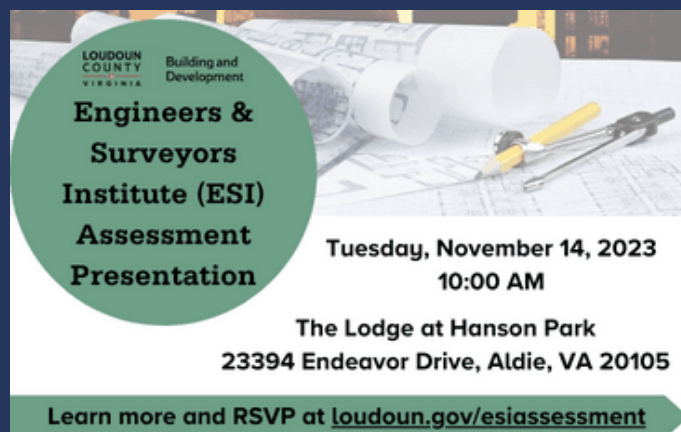
Final submissions must be sent in PDF format [via email](#) with the subject line “RFEI: Former Ashburn North Park and Ride Submittal.” All RFEI submissions are due by Friday, December 15, 2023, prior to 5:00 p.m.

### **For More Information**

The original RFEI and an addendum with questions and answers regarding the RFEI may be found at [loudoun.gov/housing](https://loudoun.gov/housing). More information is available by calling the Department of Housing and Community Development, [703-737-8323](tel:703-737-8323), or [sending an email](#).

## **County to Present Findings of Assessment of Engineering and Surveyors Institute Services**

Loudoun County is preparing to present the findings of an independent assessment of the services provided by the Engineers and Surveyors Institute (ESI) to the [Department of Building and Development](#) to support the land development and review process in Loudoun.



**Engineers & Surveyors Institute (ESI) Assessment Presentation**

**Tuesday, November 14, 2023  
10:00 AM**

**The Lodge at Hanson Park  
23394 Endeavor Drive, Aldie, VA 20105**

Learn more and RSVP at [loudoun.gov/esiasessment](https://loudoun.gov/esiasessment)

The assessment sought to evaluate the effectiveness of the programs and how they meet the goals of supporting and enhancing the development review and approval processes.

The services include Minimum Submission Review, Team Peer Review, Educational Services and the Designated Plans Examiner/Plans Review Specialist Programs. Building and Development utilizes these services to increase efficiency in plan review; increase the predictability in overall review/approval times; and ensure quality submission reviews by county staff.

The assessment included county staff and stakeholder (engineers, developers, ESI staff) interviews, a review of best practices from surrounding jurisdictions, a review of performance data from Loudoun County and ESI, a review of class feedback information and curriculum/class information, and a review of policies, procedures and processes from Loudoun County and ESI.

Results of this assessment include recommendations to the county for improvements to ESI services. The draft findings of the report will be presented at an upcoming in-person meeting. The county will provide an opportunity for interested parties to submit written comments following the meeting.

### **Presentation Details**

**The presentation will be held Tuesday, November 14, 2023, at 10:00 a.m. at [The Lodge at Hanson Park](#), 23394 Endeavor Drive, Aldie, VA 20105.**

[Attendees should RSVP online using this form](#)

Following the presentation, the assessment report and instructions for providing written comments will be made available online at [loudoun.gov/esiasessment](https://loudoun.gov/esiasessment).

---


## **Christmas Tree "Live Burn" Demonstration**

**CHRISTMAS TREE SAFETY**  
Loudoun County Fire and Rescue and the Loudoun County Fire and Rescue Fire Marshal's Office will be conducting a live burn demonstration highlighting holiday fire safety.

**LIVE BURN DEMO**

TUESDAY, NOVEMBER 22, 2023  
10:00 A.M. - 11:00 A.M.

LOUDOUN COUNTY FIRE AND RESCUE  
OLIVER "O.R." DUBE TRAINING ACADEMY  
16595 COURAGE COURT  
LEESBURG, VA 20175



Loudoun County Fire and Rescue (LCFR) and the LCFR Fire Marshal's Office will be conducting a live burn demonstration highlighting holiday fire safety.

The demonstration will provide a firsthand account of the potential

dangers associated with improperly cared for live Christmas trees and how quickly these fires can turn deadly.

Fire officials will be on hand to provide key fire prevention tips to keep your family safe and teach you how to choose and care for your live Christmas tree.

**What:** Christmas Tree Live Burn Demonstration

**Who:** Loudoun County Combined Fire and Rescue System Chief Keith H. Johnson Loudoun County Fire and Rescue Fire Marshal's Office Members of the Loudoun County Fire and Rescue System

**When:** Tuesday, November 21, 2023, 10:00 a.m. – 11:00 a.m.

**Where:** 16595 Courage Court, Leesburg, Virginia, 21075

The demonstration will be located on the training burn pad located behind the highbay building at the bottom of the hill.

**Supervisor Koran T. Saines**  
Sterling District Supervisor  
Loudoun County Board of Supervisors  
[703-777-0204](tel:703-777-0204)

[Loudoun County Government](#)

[Sterling District Supervisor Page](#)

[Email Koran T. Saines](mailto:Koran.T.Saines)

**STAY CONNECTED**



Sterling District | 1 Harrison Street, S.E., 5th Floor, Leesburg, VA 20177

Sent by [koran.saines@loudoun.gov](mailto:koran.saines@loudoun.gov) powered  
by

