

Silver Line Small Area Plan CPAM UPDATE

**Transportation and Land Use Committee
July 15, 2016**

Purpose

- **Recap Board Actions / Desired Outcomes**
- **Overview of Progress To Date**
- **Overview of Community Outreach and Engagement Meeting**
- **Overview of Planned Future Activities**
- **Committee Questions and Feedback**

Recap Of Board Actions

- **Board of Supervisors directed staff to develop work plan for CPAM – January 2016**
- **Presentation to Transportation and Land Use Committee completed - February 2016**
- **Board of Supervisors initiated and approved outcomes, work plan, and schedule March 17, 2016**
- **TLUC directed additional discussion of current planned roadway alignments**

CPAM Desired Outcomes / Concepts

- **Map of land use designations and density**
- **Detailed descriptions and illustrations of uses and development types**
- **Transportation Plan including road networks, general alignments, bus, bike, and pedestrian**
- **Community facilities**
- **Conceptual design guidelines**
- **Area specific policies**

Progress To Date

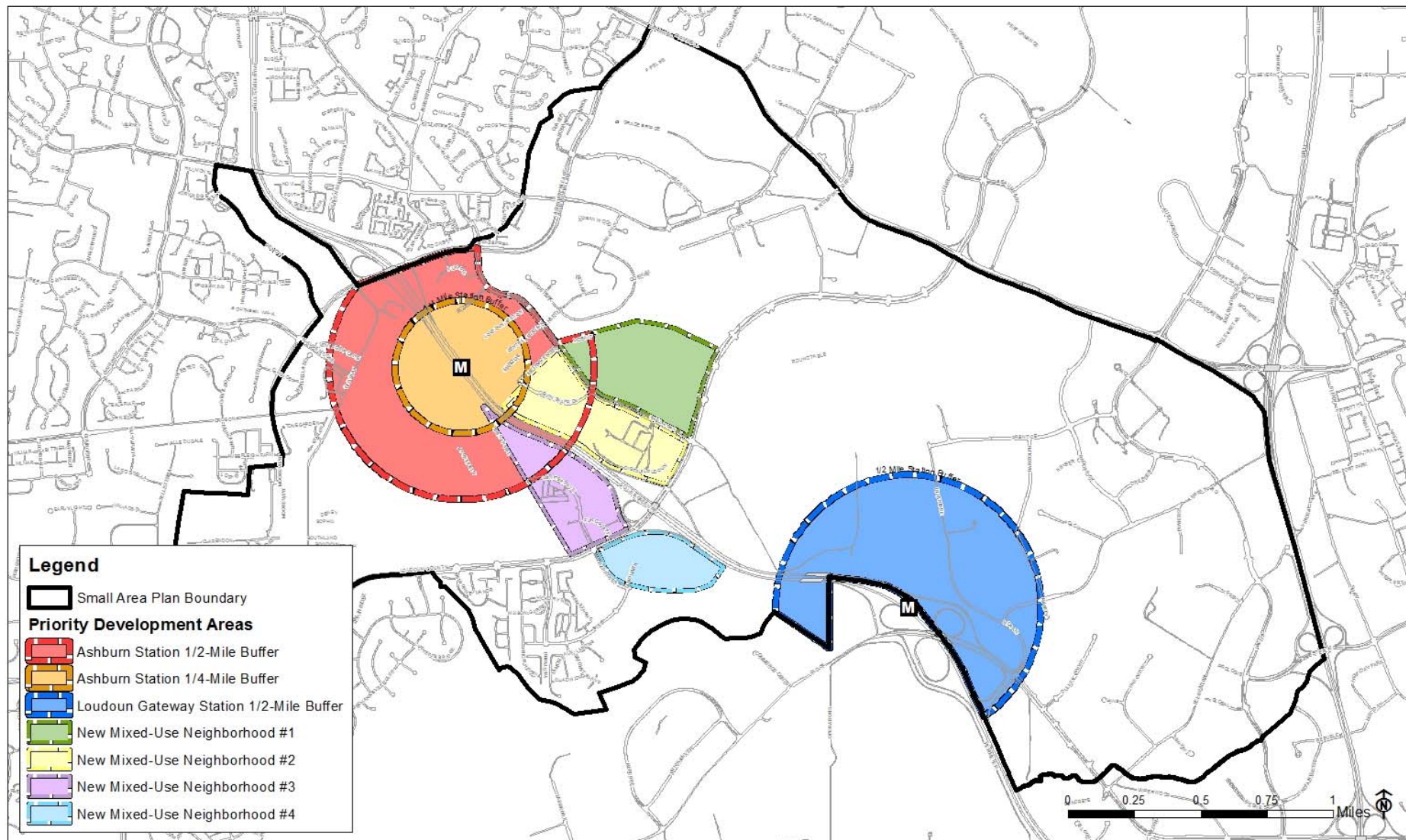
Staff drafting of Plan at 50% - 60% complete

- **Land use plan / typology**
- **Transportation network**

Community Outreach / Engagement

- **Meeting held June 29, 2016**
- **Ninety one (91) participants attended**
- **Eighteen (18) Staff / consultant support staff attended**
- **Draft Land Use Plan / Typologies and Transportation Plan presented**
- **Received comments and input from the participants in small group work session**

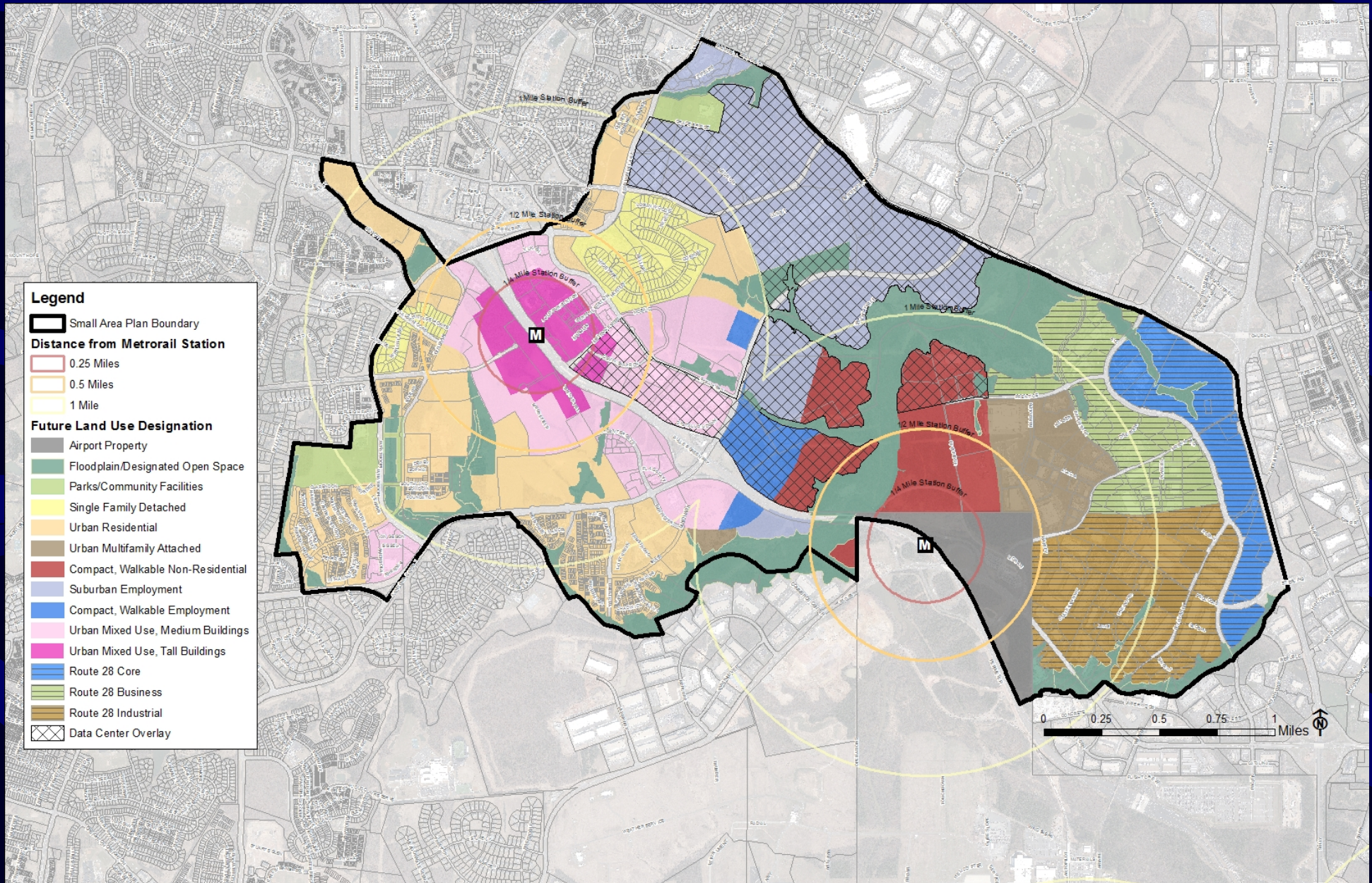
Key Development Areas



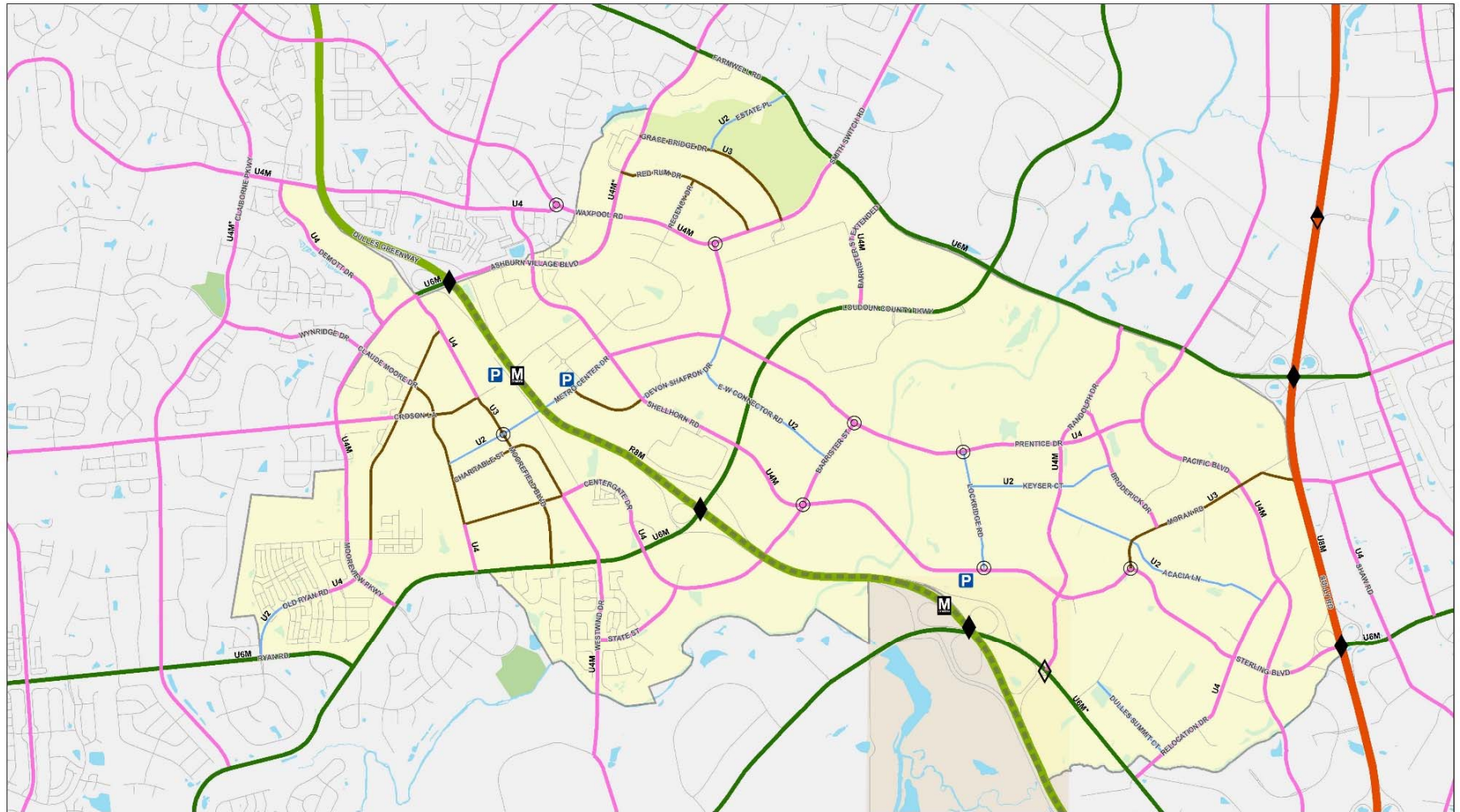
SILVER LINE AREA
Comprehensive Plan Amendment

Priority Development Areas

Proposed Land Use Plan



Proposed Transportation Plan



Silver Line Small Area Plan - 2040 Proposed CTP Roadway Network



DISCLAIMER: This map is for discussion purposes only and the roadway network shown is subject to change.

0 500 1,000 2,000 3,000 4,000 Feet



Progress To Date

Summary of Meeting Comments

- **Opposing viewpoints on residential development in Airport Impact Overlay Zone**
- **Extend mixed use to the Loudoun Gateway Station and other areas**
- **Concern for amount of residential and mixed uses proposed**
- **Concern for adding data center uses and their impacts**
- **Careful planning for provision of schools to support development proposed is needed**
- **Addressing traffic generation is important**
- **Multi-modal transportation needed and encouraged**
- **Ensure policies implement the plans vision**

Planned Activities

- **Staff to complete 100% Draft Small Area Plan - August 2016**
- **Final Public Outreach and Engagement Meeting – August 23, 2016**
- **Planning Commission consideration / recommendation – September 2016**
- **Board of Supervisors consideration / adoption – November / December 2016**

Silver Line Small Area Plan CPAM UPDATE

Questions and Feedback?