



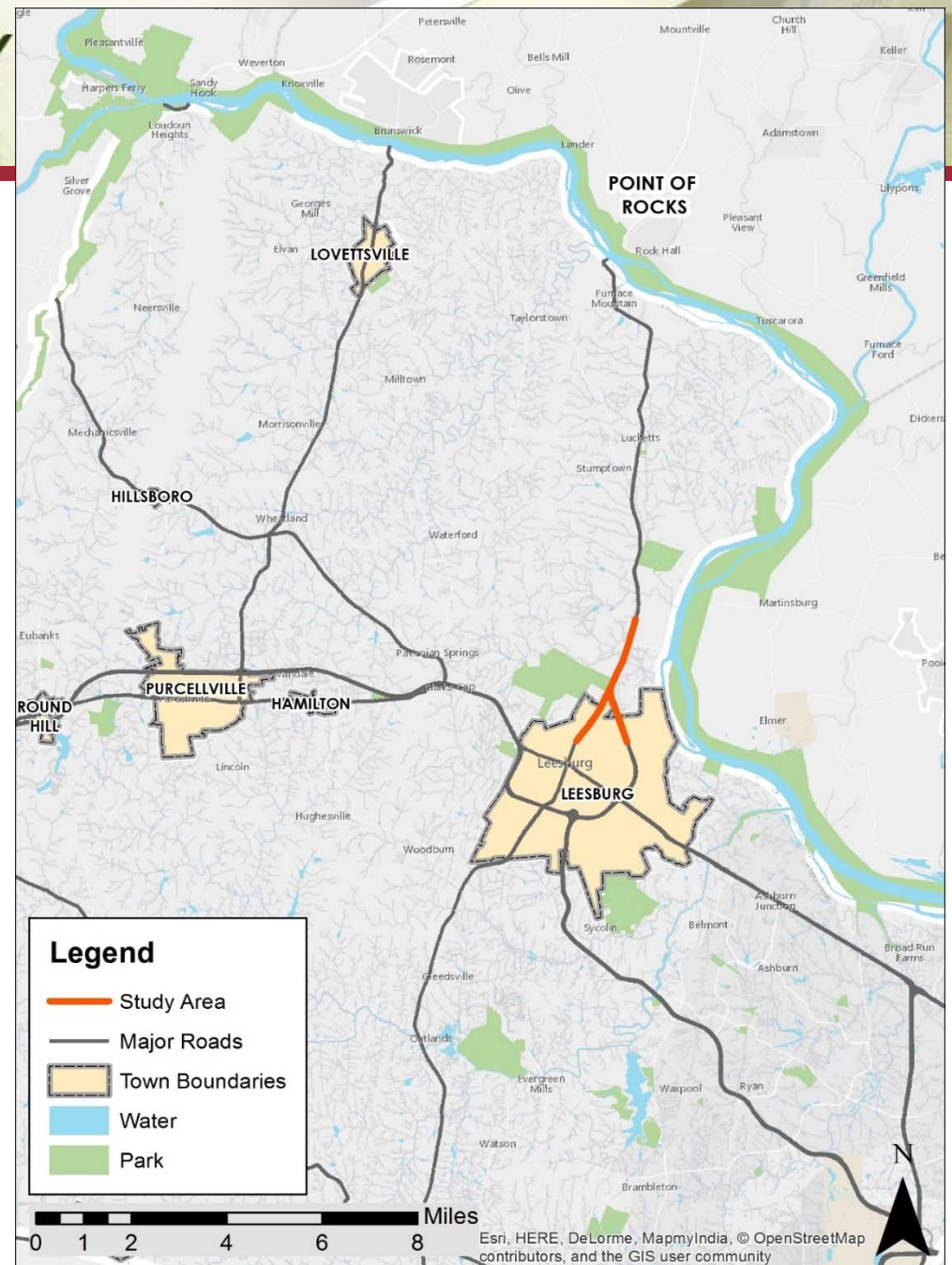
# **Route 15 Congestion Report**

## **(Battlefield Parkway to Whites Ferry Road)**



## Congestion Report

- Study Area – Battlefield Parkway to Whites Ferry Road/Raspberry Drive
- Existing Conditions, 2020, and 2040 Conditions
- Weekday AM and PM peak periods





## Report Objectives

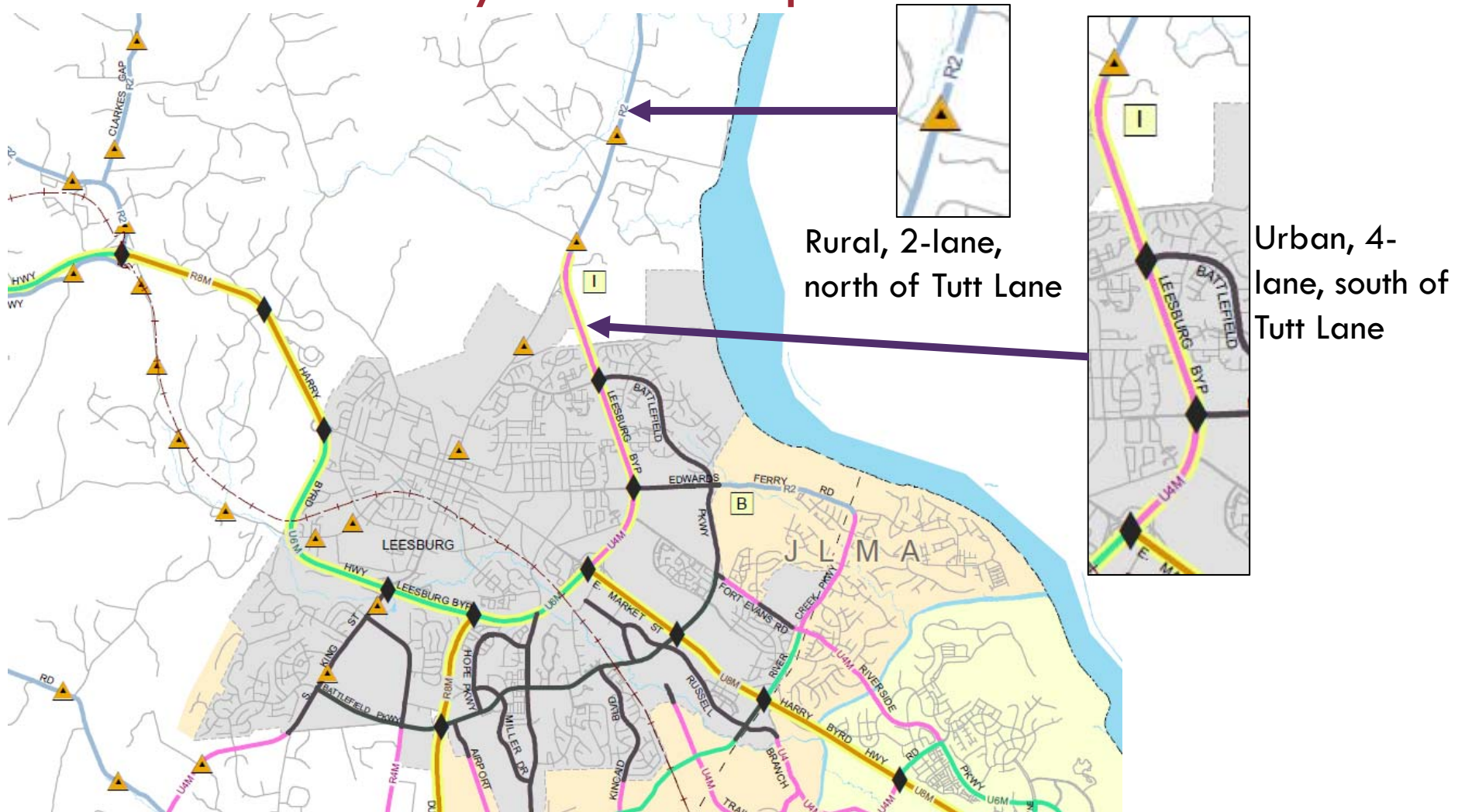
- Build upon previous studies
- Identify improvements to alleviate existing congestion
- Pursue lower cost and context sensitive solutions







## Countywide Transportation Plan



## Coordination To Date

- Board of Supervisors
- Town of Leesburg Staff and Council
- VDOT
- Journey Through Hallowed Ground
- Catoclin Coalition
- LCPS
- Bike Loudoun

### **1<sup>st</sup> Round of Public Input**

June 26<sup>th</sup> Leesburg

July 8<sup>th</sup> Lucketts

July 15<sup>th</sup> Lucketts





## Development of Recommendations

- 10 initial concepts analyzed
- Combined elements of concepts → refined alternatives
- Analyzed traffic for the refined alternatives
- Recommendations based upon traffic performance



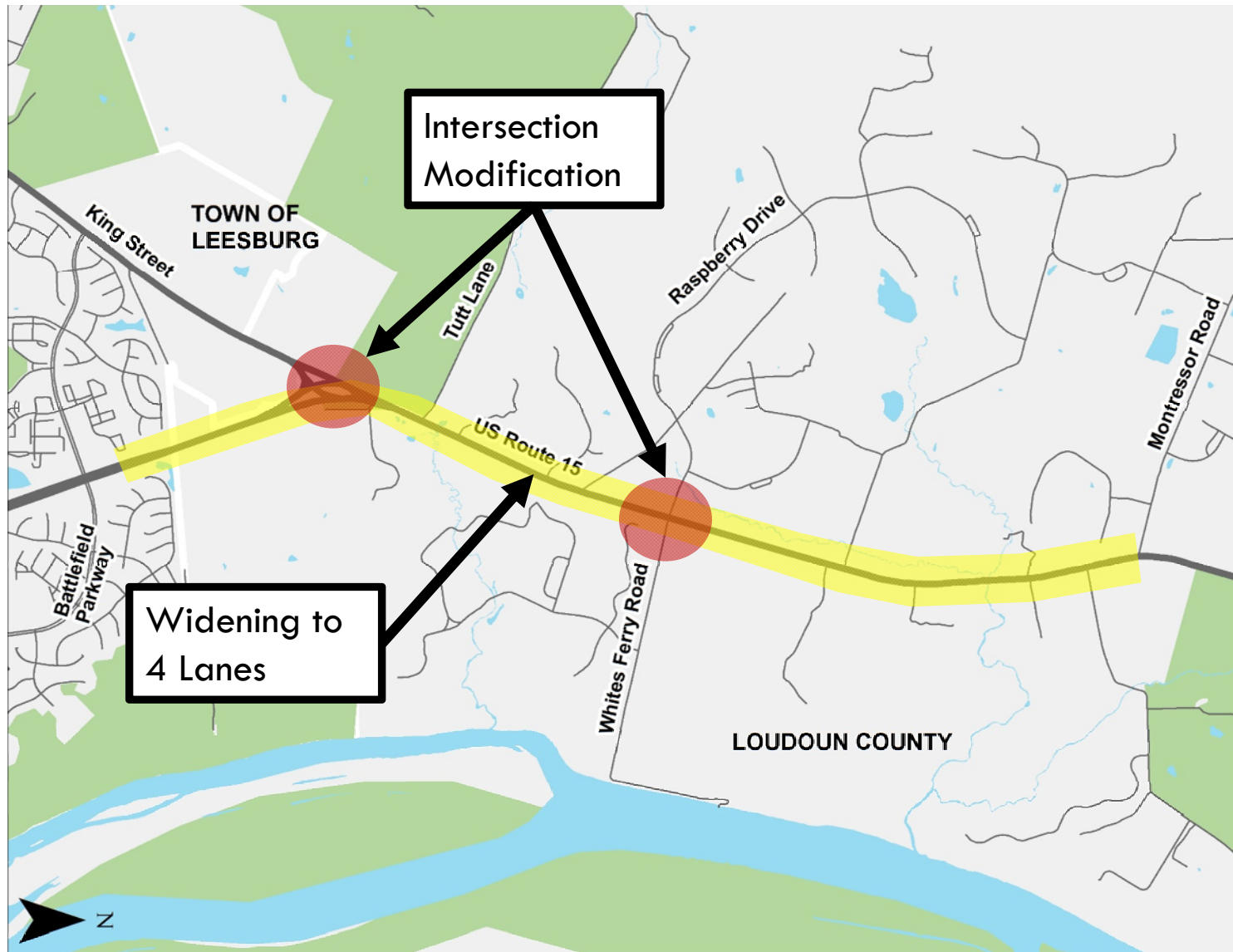


## Route 15 Congestion Report Conclusions

- Additional capacity (4-lanes) along Route 15 is necessary from Battlefield Parkway to north of Whites Ferry Road
- Intersection modifications at Whites Ferry Road and at King Street
- Consider a phased implementation to provide some congestion relief as soon as possible

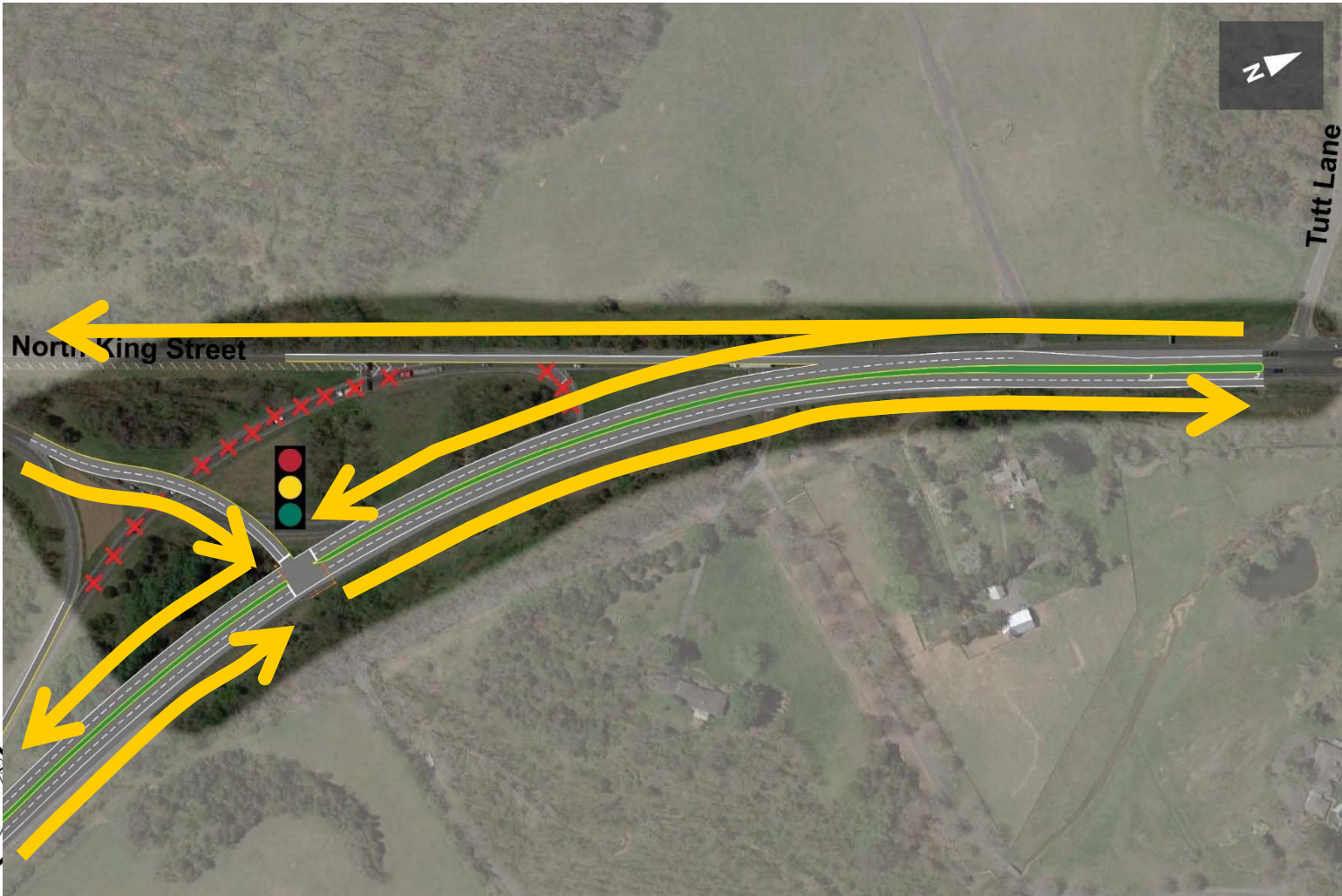








# King Street - Traffic Signal



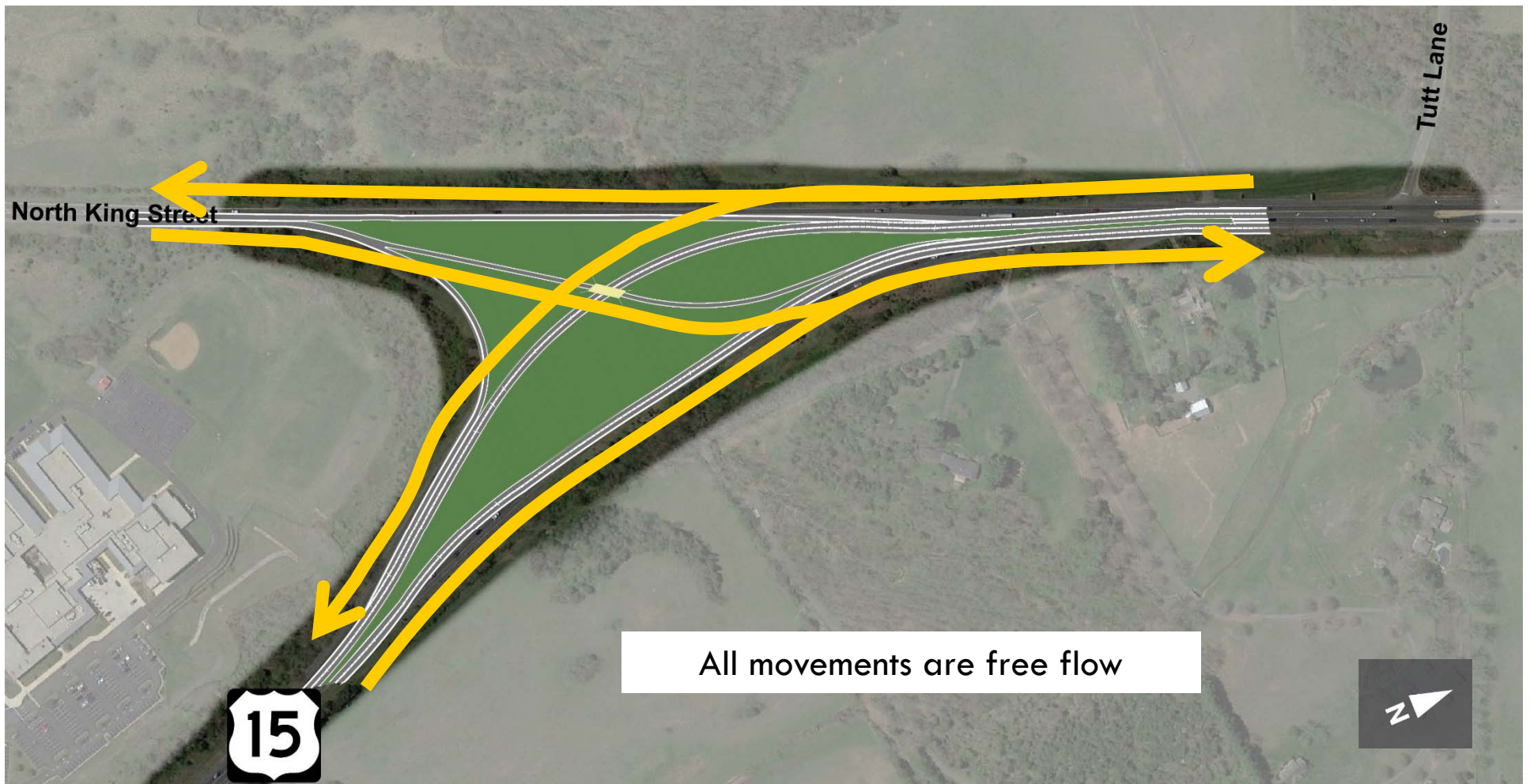
## King Street — Roundabout(s)

\*further study required



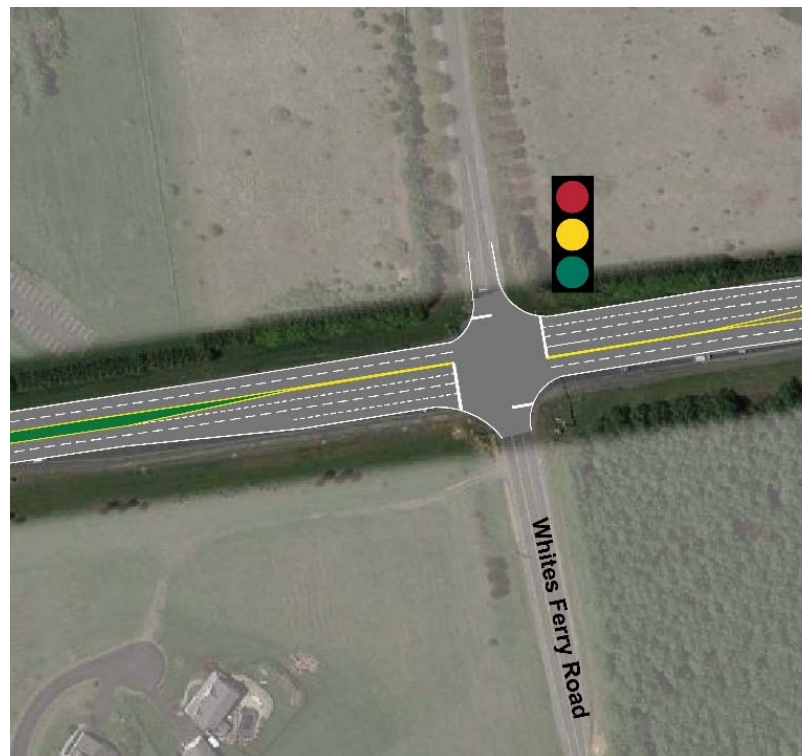


## King Street – Grade Separation





## Whites Ferry Road – Traffic Signal





## Whites Ferry Road - Roundabout





- Insert Bow-tie Roundabouts





# Interim Phases

