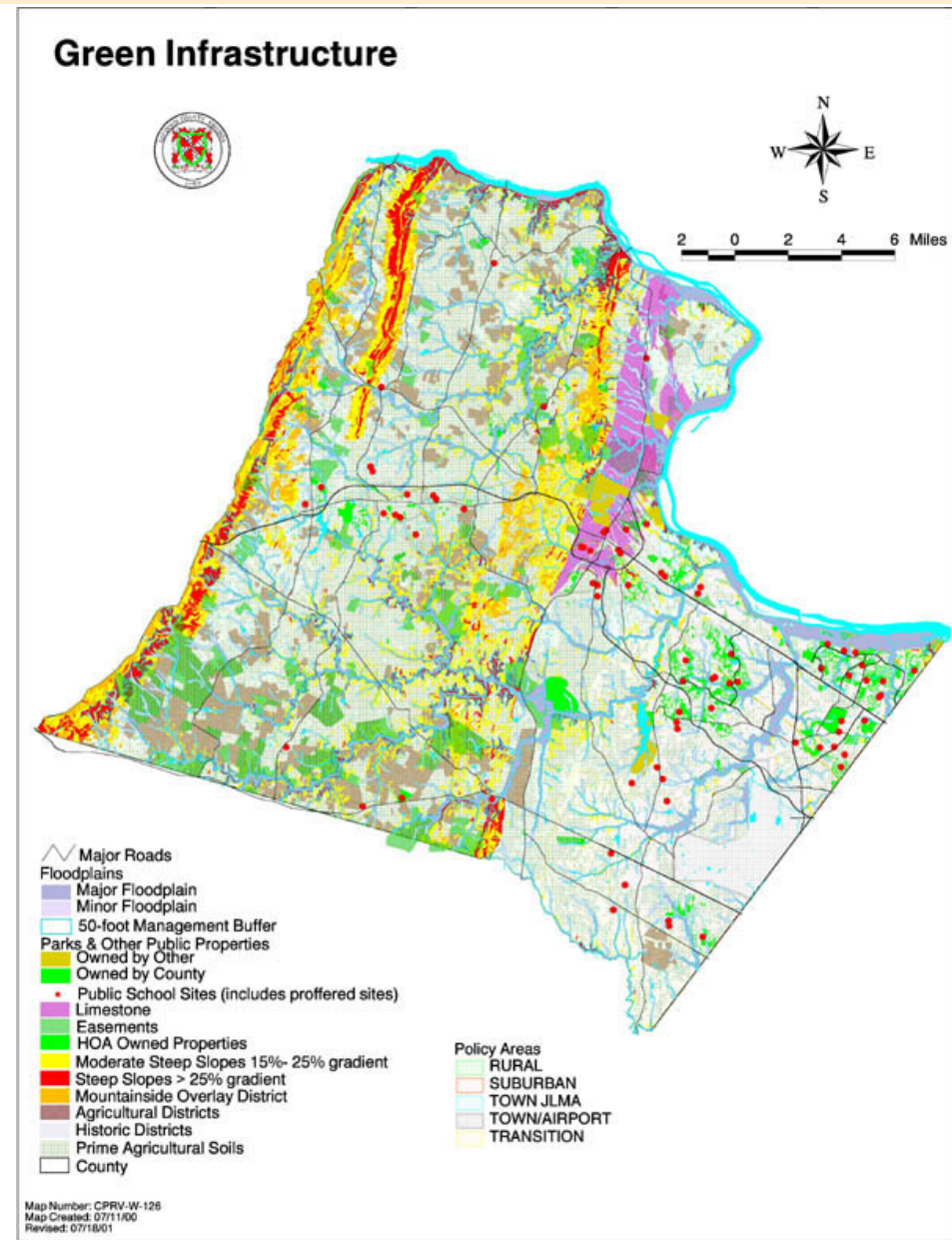


Green Infrastructure

December 18, 2017 | Loudoun County Comprehensive Plan

Green Infrastructure

Integrated system of resources under a variety of ownerships and management strategies that form a countywide network



Green Infrastructure White Paper

- Key considerations
 - *Public Input*
 - *Retain successful and enduring policies*
 - *Update policies to reflect current practices*
 - *New policies to address new and emerging conditions*
- Receive Stakeholders feedback and recommendations for Carryover Policy Subcommittee

Green Infrastructure White Paper

- What we heard:
 - *Preservation of natural resources*
 - *Preserving existing and creating new green spaces*
 - *Network of connected green spaces*
 - *Renewable energy*
 - *Sustainable development*
 - *Noise/Light Issues, Pollution, Recycling*

Green Infrastructure White Paper

- Some Key Policy Recommendations
 - *Move Extractive Industry to Place Type discussion and Highway Noise to the CTP*
 - *Merge and incorporate carryover policies*
 - *Retain conservation, preservation, and restoration of the Green Infrastructure elements*
 - *Reference Heritage Preservation Plan*
 - *Add water quality actions and strategies to improve water quality*
 - *Add sustainable development actions and strategies*

envision



LOUDOUN

our county • our future

Green Infrastructure White Paper

- Some Key Policy Considerations
 - *Conservation Design or Similar Process*
 - *RSCOD/Chesapeake Bay Ordinance*
 - *PDR/TDR Programs*
 - *Remove or Retain Redundant Heritage Preservation Policies*