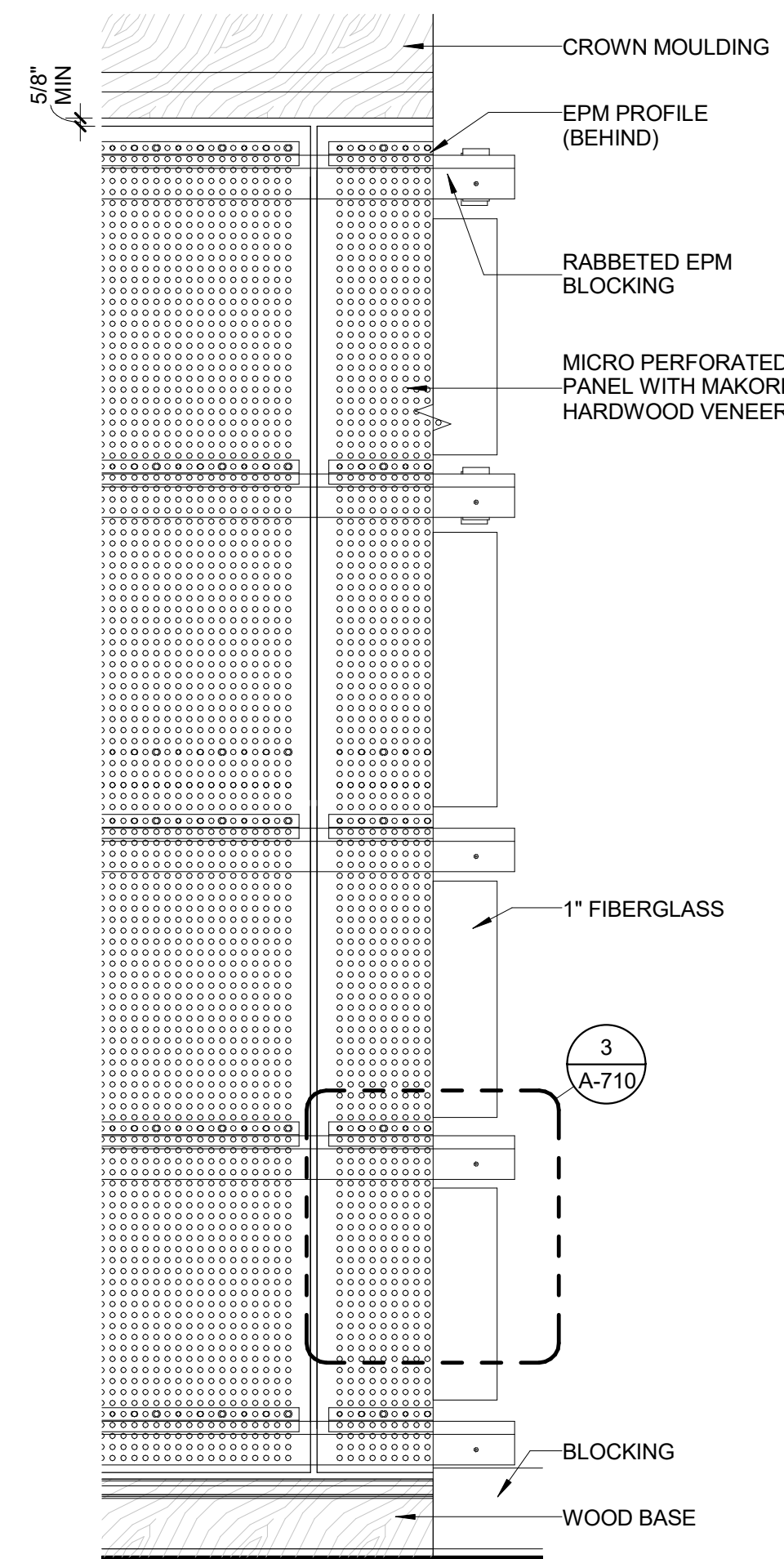


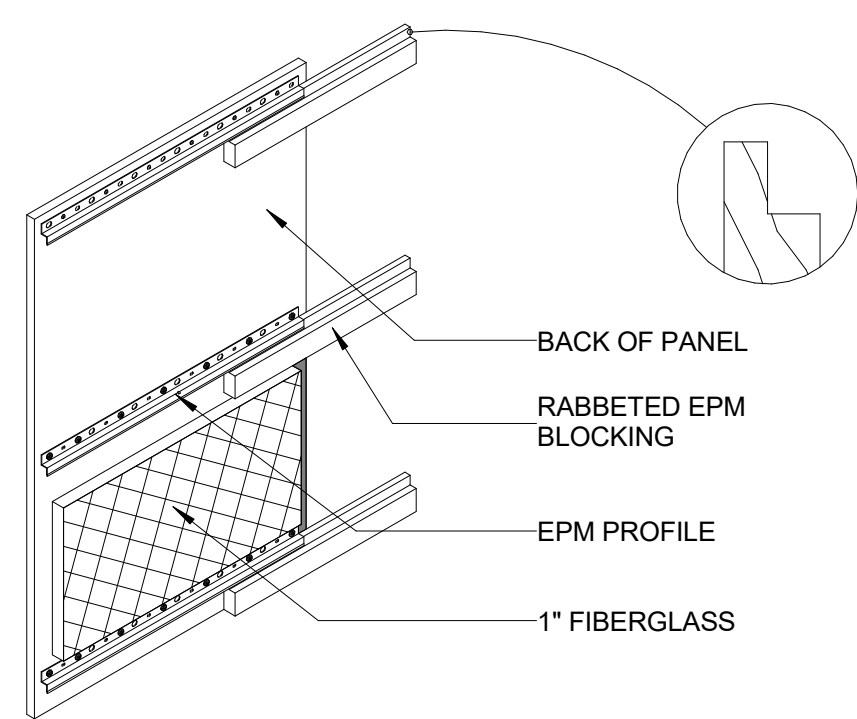
6/6/2019 7:24:51 AM

A
B
C
D
E
F
G

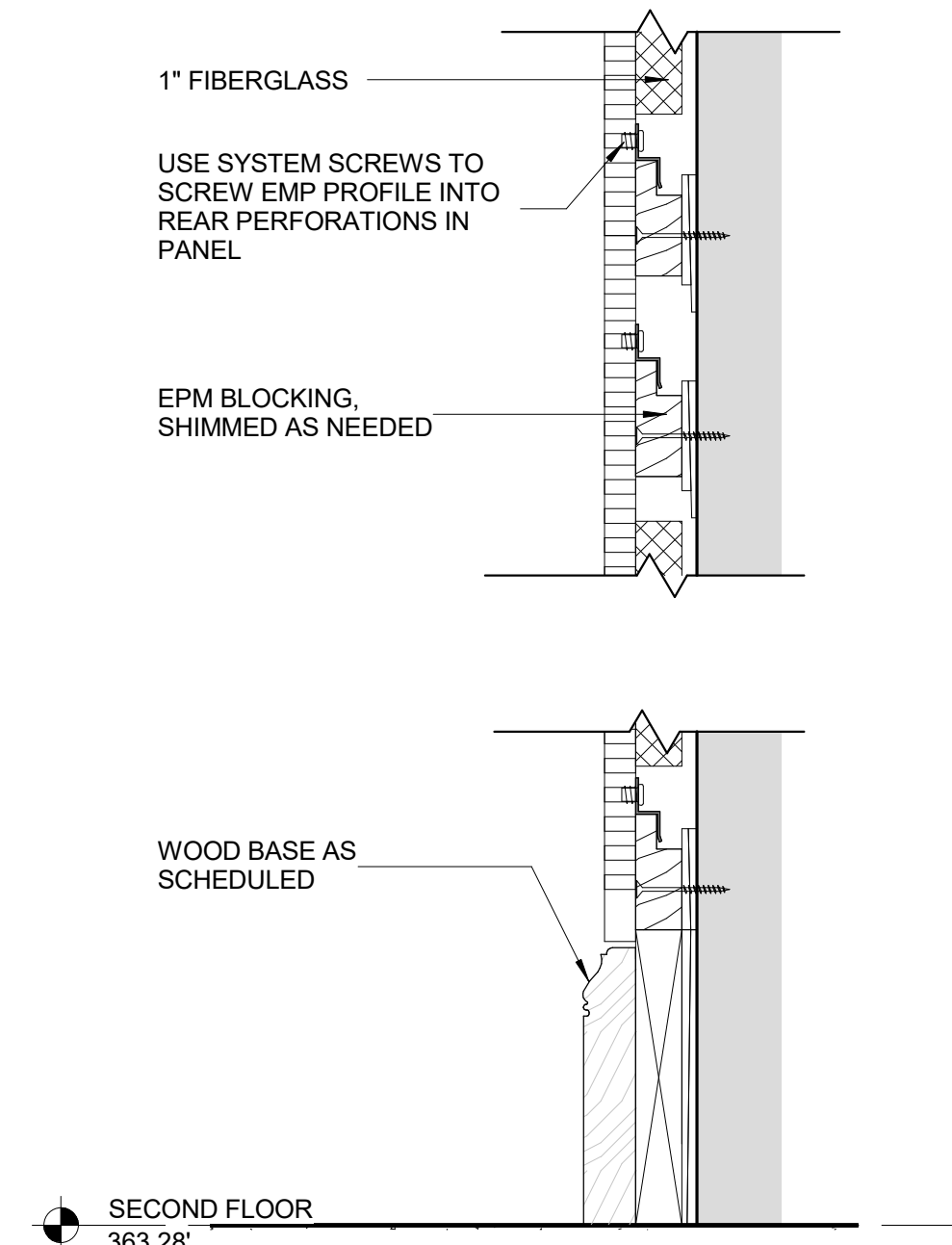
4 ENLARGED ELEVATION - MICRO-PERFORATED PANELS
Scale: 1" = 1'-0"



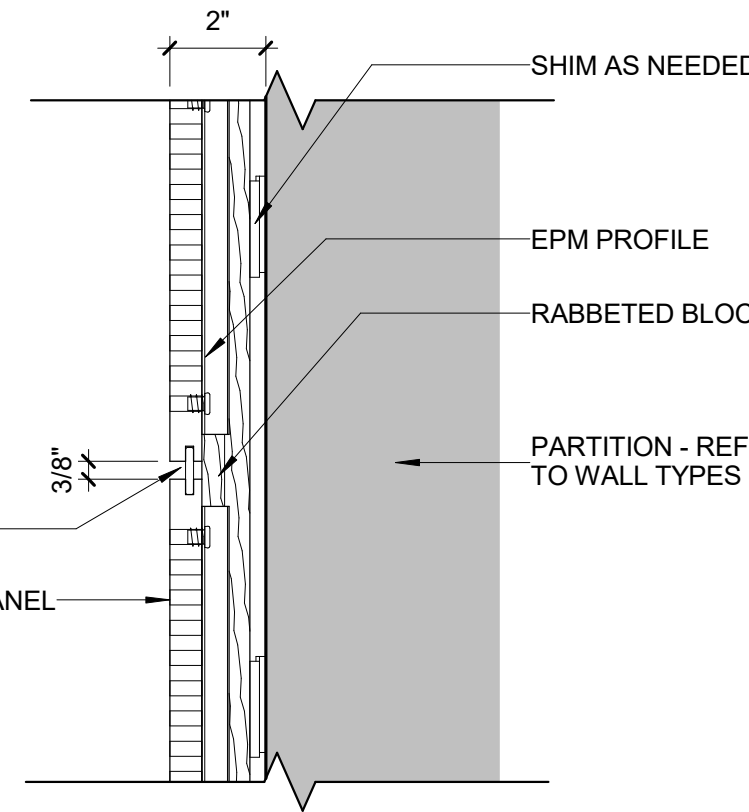
3 MICRO-PERFORATED PANEL ISOMETRIC
Scale: 3" = 1'-0"



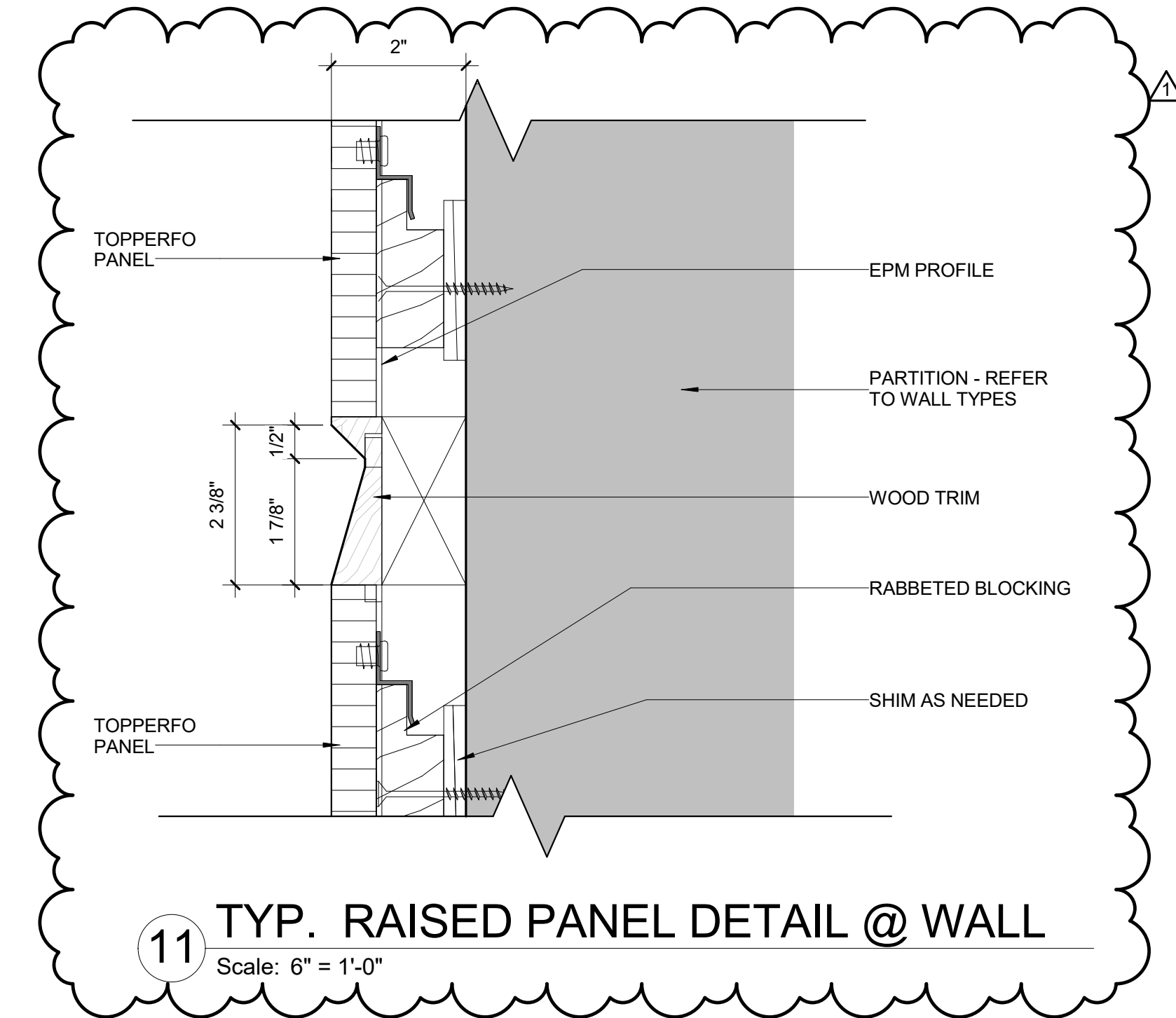
7 WALL SECTION - MICRO-PERFORATED PANELS
Scale: 3" = 1'-0"



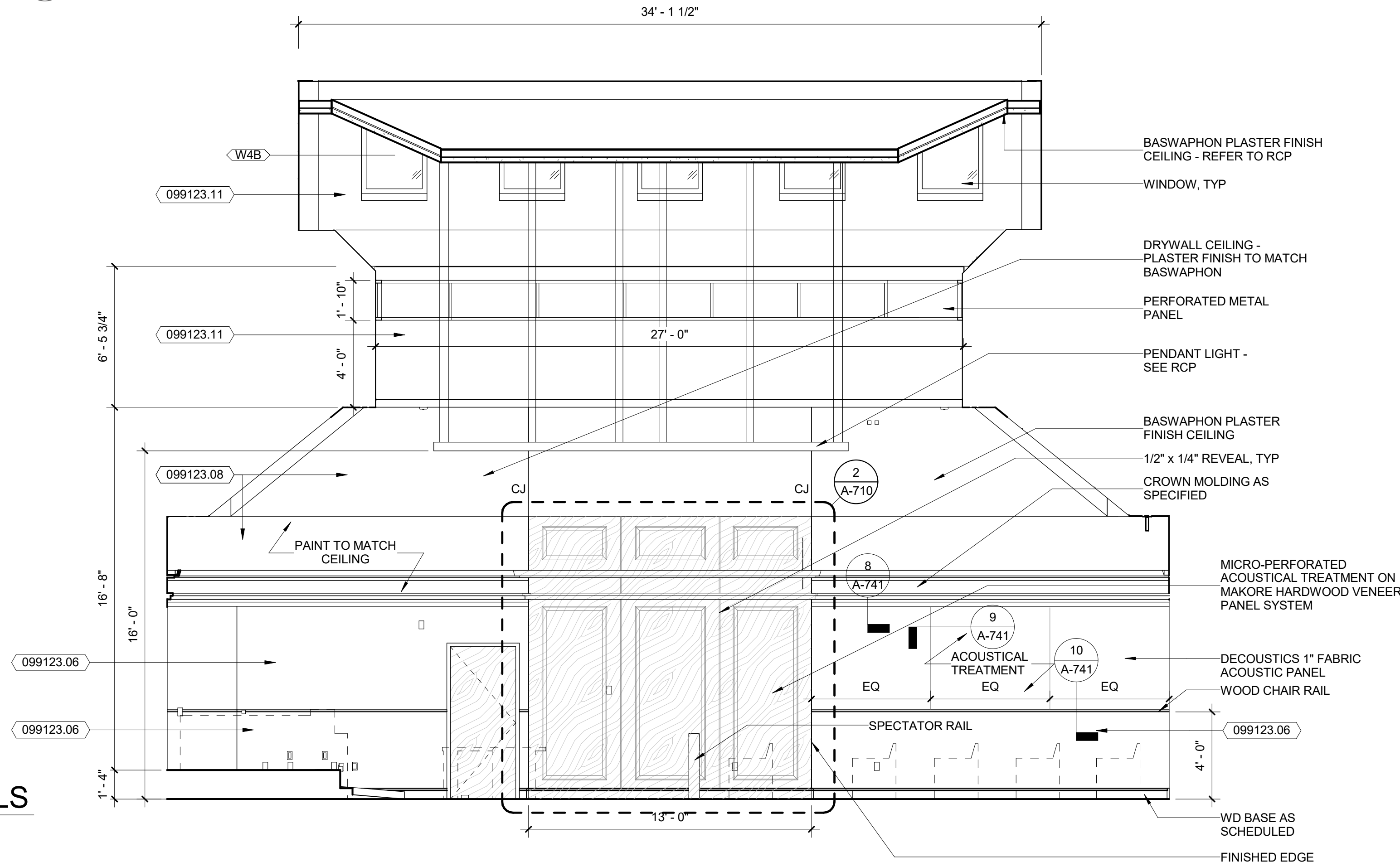
10 PLAN DTL - MICRO-PERFORATED PANELS
Scale: 3" = 1'-0"



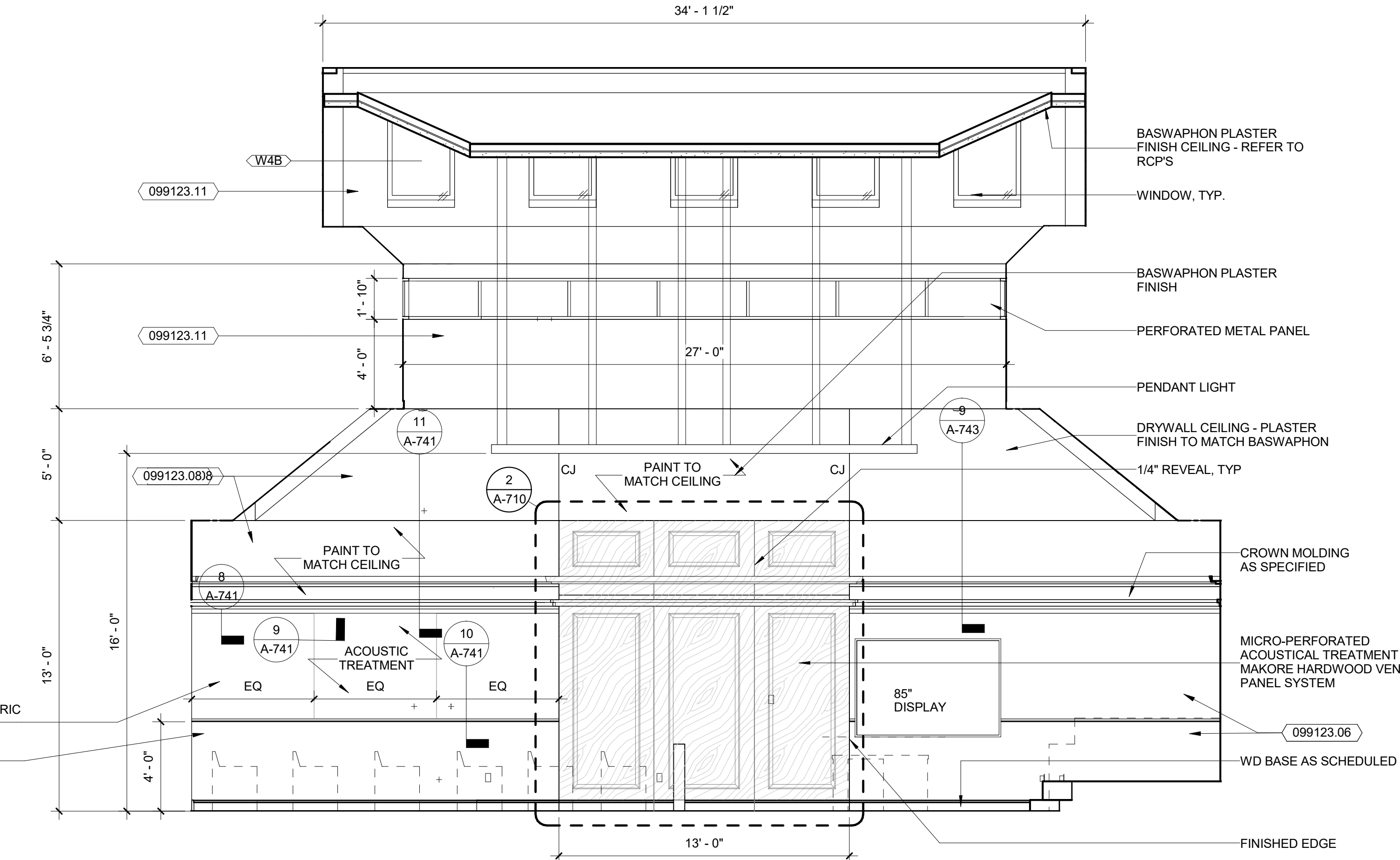
11 TYP. RAISED PANEL DETAIL @ WALL
Scale: 6" = 1'-0"



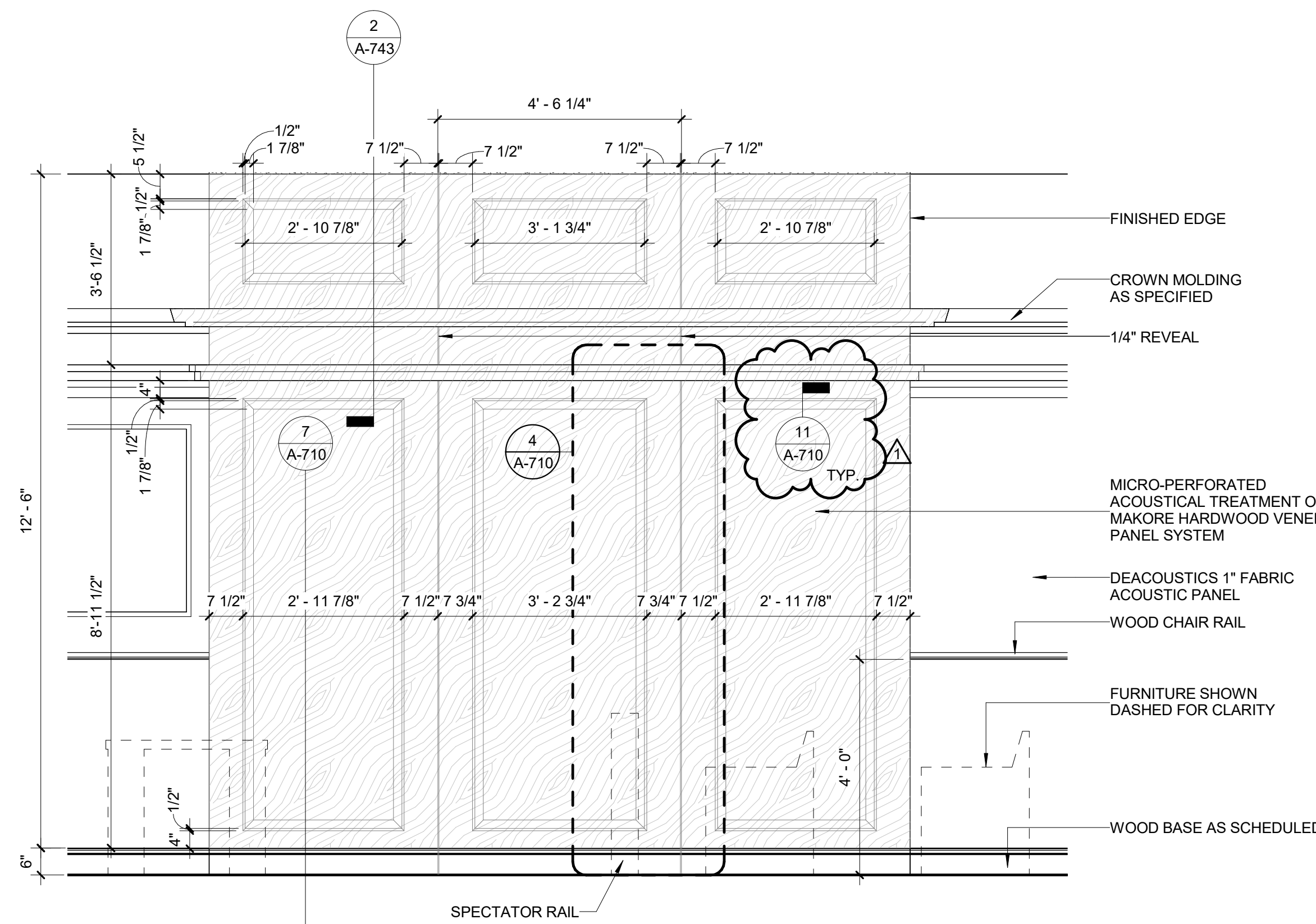
6 COURTROOM A - EAST (COURTROOM C SIM)
Scale: 1/4" = 1'-0"



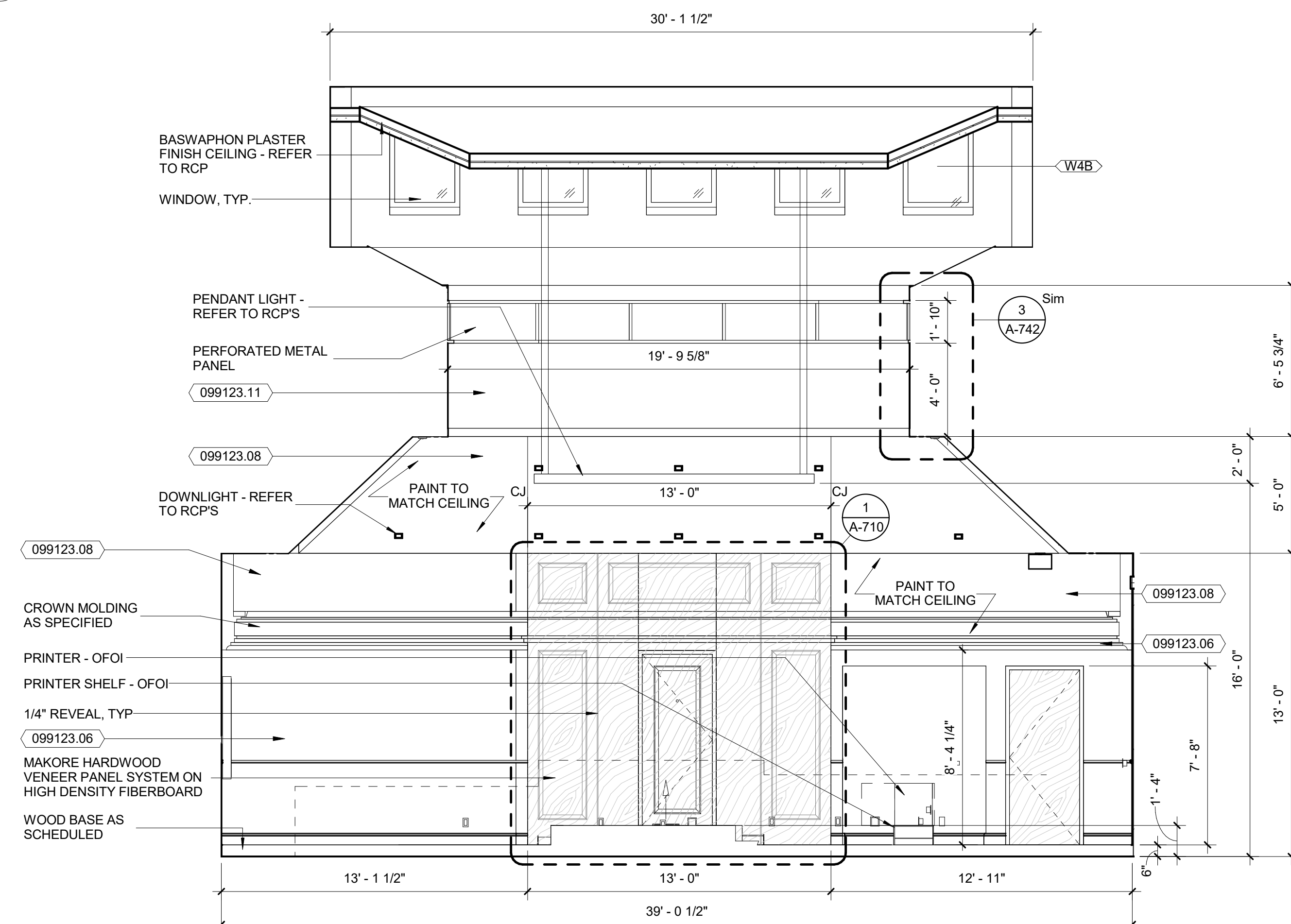
9 COURTROOM A - WEST (COURTROOM C SIM)
Scale: 1/4" = 1'-0"



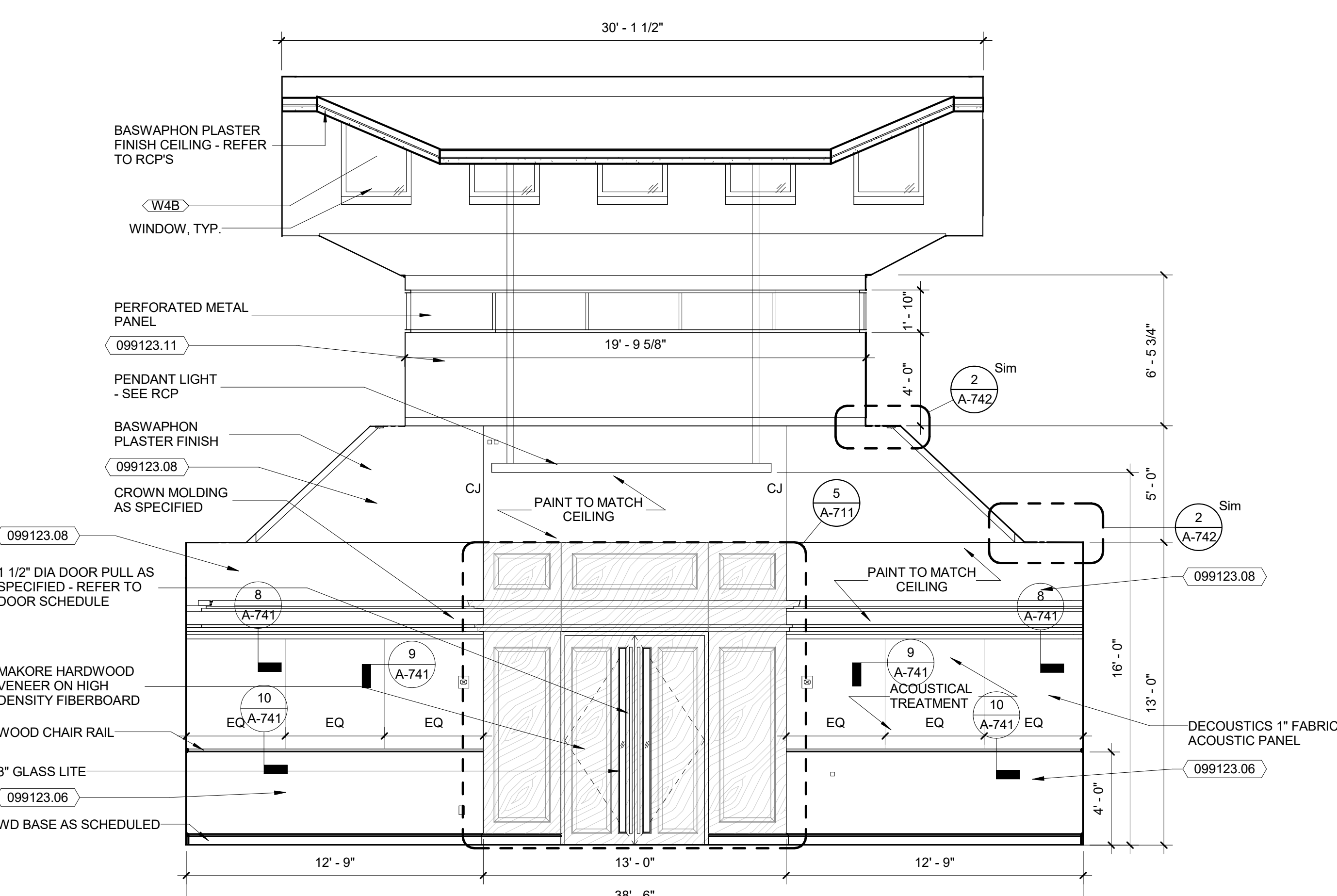
2 ENLARGED ELEVATION - CR EAST/WEST
Scale: 1/2" = 1'-0"



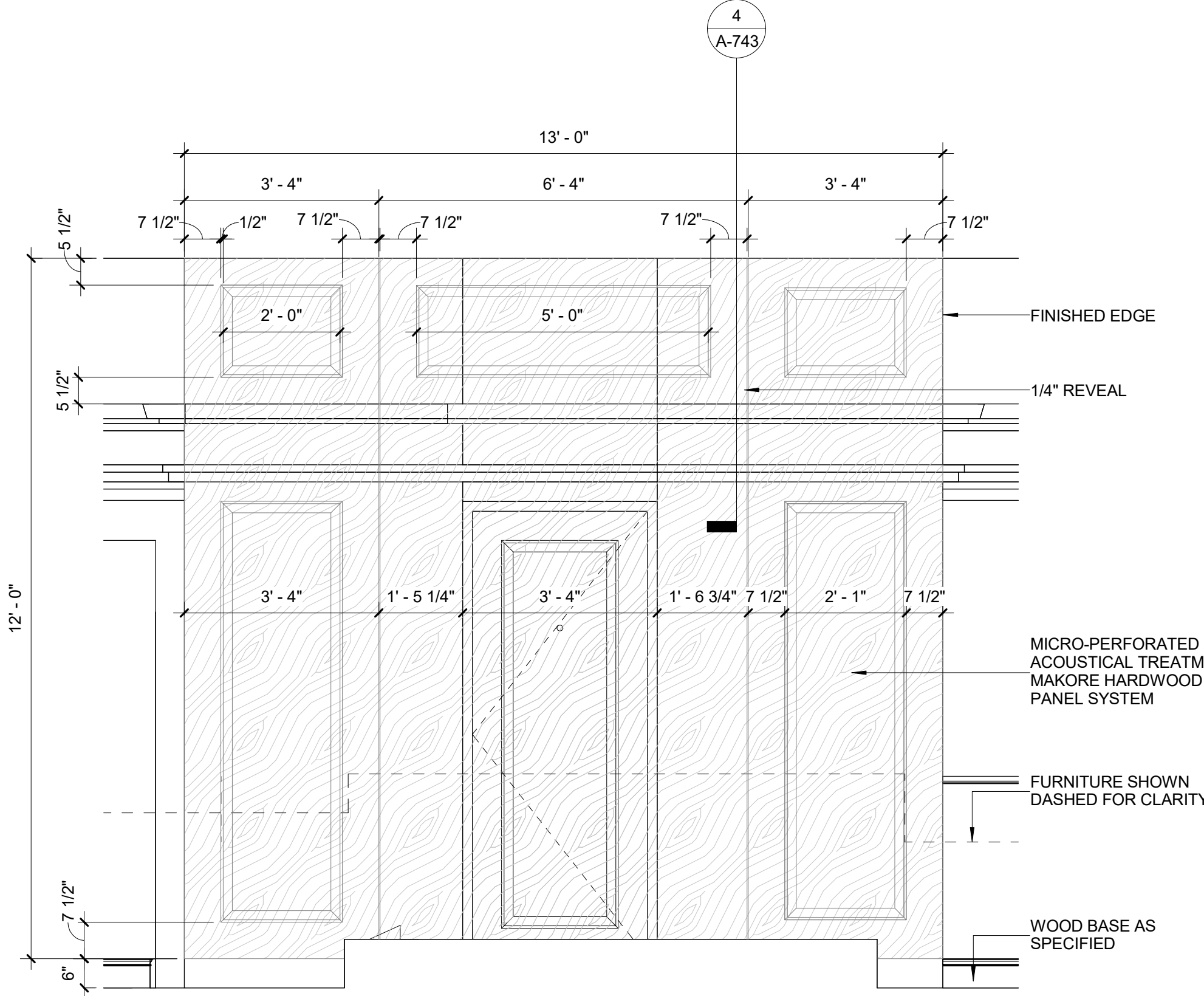
5 COURTROOM A - NORTH (COURTROOM C SIM)
Scale: 1/4" = 1'-0"



8 COURTROOM A - SOUTH (COURTROOM C SIM)
Scale: 1/4" = 1'-0"



1 ENLARGED ELEVATION - CR NORTH
Scale: 1/2" = 1'-0"



SHEET NO.

ENLARGED
ELEVATIONS -
COURTROOMS

TITLE

DATE APRIL 08, 2019

CHECKED BY RW, BH

APPROVED BY MS

DRAWN BY MD/TMEA

REVISIONS

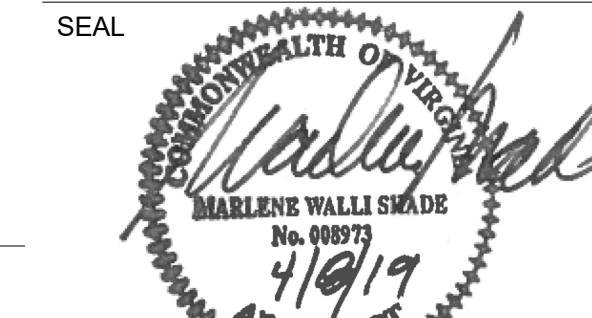
No. Description Date

1 Addendum #2 6/06/2019

SCALE

No.	Description	Date
1	Addendum #2	6/06/2019

KEY PLAN



LOUDOUN COUNTY

Loudoun County Phase III Expansion - New Courthouse

2 Church Street
Leesburg, VA 20176

ISSUED FOR BID - VOLUME II

Dewberry

Dewberry Architects, Inc.
8401 Arlington Blvd.
Fairfax, VA 22031
703-649-6100



Ellerwood + Machado, LLC
4245 North Fairfax Drive, Suite 850
Arlington, VA 22203
703-835-9989