



Loudoun County, Virginia

Division of Procurement
One Harrison St, SE, 4th Floor
Leesburg, Virginia 20175

June 6, 2019

NOTICE TO BIDDERS

ADDENDUM NO. 2

RFQ 58772

The following changes and/or additions shall be made to the original Invitation for Bid RFQ 58772: Construction of the New Loudoun County Courthouse. Please acknowledge receipt of this addendum by signing and returning with your bid.

1. The purpose of this Addendum is to respond to questions received and to modify contract documents.
2. Substitutions during the bidding process. Several requests for substitutions have been received for lighting; metal ceiling system; and an automatic door opener. Per IFB Section 18.28 in the Instruction to Bidders "The County will not consider substitutions for convenience during the bidding process. They will be considered after contract award. Refer to Article 4.15 – Equal Products in the General conditions of the Construction Contract for procedures. Substitution for Cause, once verified may be addressed during the bidding process at the discretion of the County." None of the substitutions submitted have been determined to be "Substitutions for Cause".

Prepared By: s/Christopher Bresley, CPPB Date: 6/6/2019
Contracting Officer

Acknowledged By: _____ Date: _____

ATTACHMENTS:

- Attachment 1: 23_05_93 Testing, Adjusting, and Balancing for HVAC (updated section 1.3)
- Attachment 2: 23_08_02 Fundamental Building Commissioning General Requirements – LEED (Updated section 1.1)
- Attachment 3: Revised Drawing A-710

BEGIN QUESTIONS

Q1: Specification Section 101416 is referenced in two specification sections in the related requirement section (101300 and 101423) but is not listed in the specs. Please confirm and provide specification 101416 for bidding purposes.

A1: Please disregard the reference.

Q2: STC rated doors are not available in a stile and rail construction but are available in a flush design. Please clarify.

A2: It has been confirmed with the door consultant that stile and rail doors are available with an STC of 40, which is what is required of the doors in question.

Q3: For specification section 084413 blast resistance, actual project blast loads are determined from project specific conditions, like perimeter distances, standoff curb distances, charge weight, etc. Blast loads can be higher or lower than what was tested in the ASTM F1642 report. Please provide the blast loads for this project.

A3: No blast loads have been calculated.

Q4: Please provide Drawings G101 Ground Floor Life Safety Plan and G102 First Floor Life Safety Plan. They are mentioned in the drawing G001 Index.

A4: These were provided as part of Addendum 1.

Q5: The Louver specification section 089119 calls for 8" wind driven but the detail on sheet A-615 shows 5". Please verify which depth is correct.

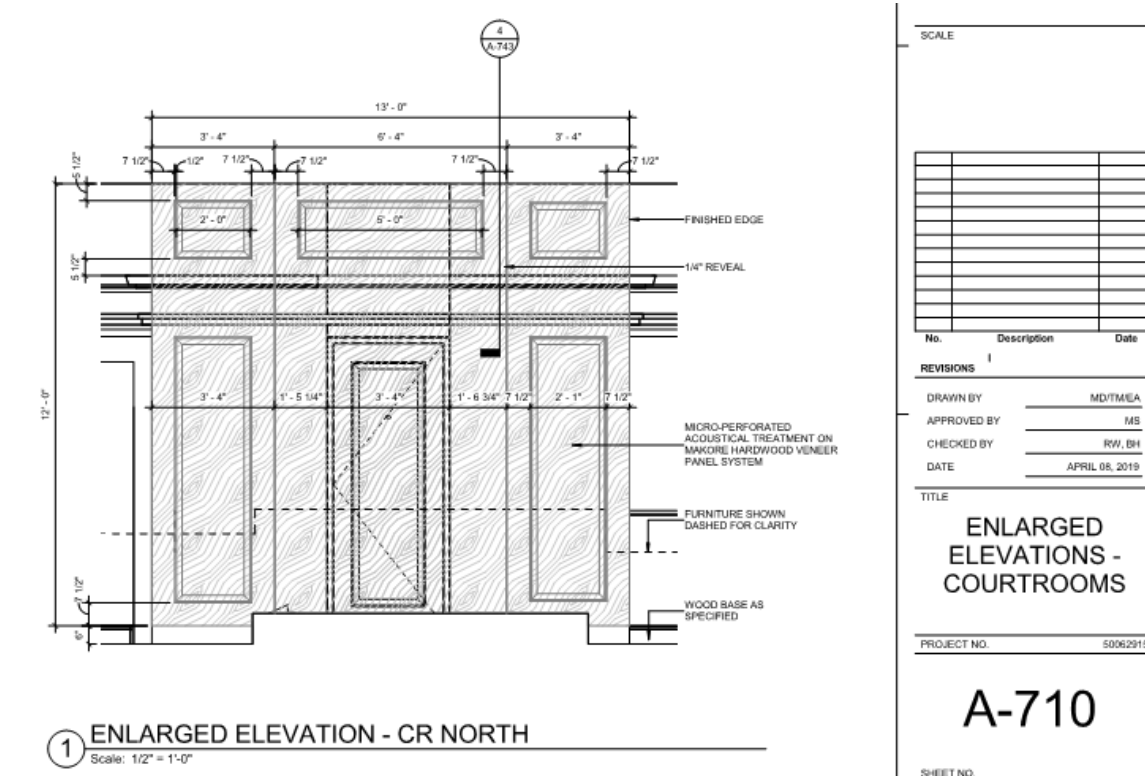
A5: The louver should be 5"

Q6: Can the AWI Quality Certification Program and WI Certified Compliance Program be removed from the project and that AWI Standards be acceptable as the standard of quality for specifications 064113, 064116, 064400, 064800, and 123623.

A6: No, AWI Quality Certification Program and WI Certified Compliance Program cannot be removed.

Q7: I don't see the architect designation of 064216 at the courtroom "paneling system", it just says "Topperfo" at section 10/A-710 (see below). Elevation 1/A-710 (see below) shows what appears to be the Topperfo micro-perf panel inserted in a stile and rail surround but section 10/A-710 show a small border around perf-holes with recessed reveal, which is correct?

A7: Reference detail 11/A-710



A8: Reference detail 11/A-710

A9: This is called out as high density shelving which will be procured as part of a separate FF&E package.

Could you please send this to me or help me locate where I might find it.

A10: The detention doors and schedule are in the QD-series (QD-101 thru QD-201).

The specs are:

083463 DETENTION HOLLOW METAL DOORS AND FRAMES

087163 DETENTION DOOR HARDWARE

Q11: There are about 24 columns that are being called out to have a splice that is not necessarily required. Both the top & bottom shafts of the column are the same; the overall length will fit on a legal load of freight and will cut down on fabrication cost & erection time if stayed 1 continuous piece. Would it be possible to leave those columns as 1 shaft instead of having the splice?

A11: Yes, this is acceptable.

Q12: Dwgs A461 / A463 are referencing MTL-2 as material designator for the side and rear cab walls. Finish schedule (dwg A621) indicates two different options for the MTL-2 material. Can we confirm the correct one for the elevator interiors? An option – for this designator – It is an angel hair finish. Pattern: ND-50RND-50R Non-directional orbital scratch pattern with finely ground lines looping arbitrarily throughout the sheet. Made by FPM Metals. Is this the correct finish for the cab?

A12: Rigidized RND - Non-Directional Vibration is the basis of design.

Q13: The 047200 specs call for vibratory tamp only. It is odd that dry tamp is specified when they are accepting APA (Architectural Precast Association) and PCI members. Is wet cast also acceptable for 047200 Cast Stone Masonry?

A13: Wet Cast method is acceptable.

Q14: Is there more information available for type "O" custom light fixture? The listed manufacturer (Project Lights Inc) has asked our vendor for specifications.

A14: This is a custom fixture so there is no model number for it. The contractor should contact the manufacturer and request information for the fixture based on the description listed in the catalog number column in the schedule on E-001.

END OF QUESTIONS