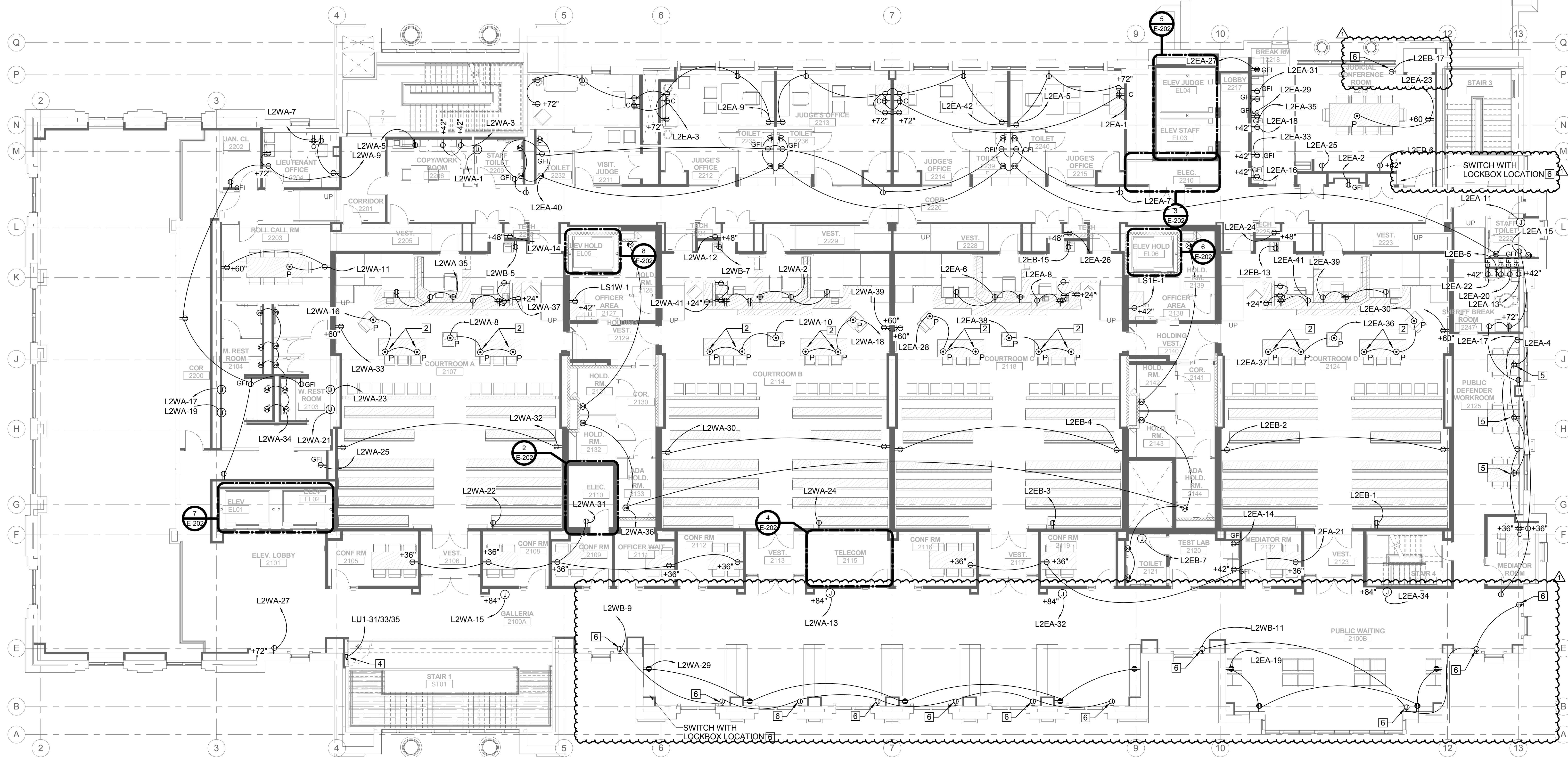


6/18/2019 1:38:23 PM

A  
B  
C  
D  
E  
F  
G

F  
E  
D  
C  
B  
A

G



8 ELEVATOR SHAFT #4  
Scale: 1/4" = 1'-0"

7 ELEVATOR SHAFT #3  
Scale: 1/4" = 1'-0"

6 ELEVATOR SHAFT #2  
Scale: 1/4" = 1'-0"

5 ELEVATOR SHAFT #1  
Scale: 1/4" = 1'-0"

4 SECOND FLOOR IT ROOM #1  
Scale: 1/4" = 1'-0"

2 2ND FLOOR ELECTRICAL WEST  
Scale: 1/4" = 1'-0"

3 2ND FLOOR ELECTRICAL EAST  
Scale: 1/4" = 1'-0"

1 ELECTRICAL SECOND FLOOR POWER PLAN  
Scale: 1/8" = 1'-0"

DRAWING NOTES:

- ADDITIONAL IT AND AV CONDUIT AND INFRASTRUCTURE SCOPE IS REQUIRED TO BE INSTALLED BY THE ELECTRICAL CONTRACTOR. REFER TO THE TA, TY AND TT DRAWING SERIES. ALL CONDUIT, BACKBOXES, AND SCOPE OUTSIDE OF LOW VOLTAGE WIRING WILL BE UNDER THE ELECTRICAL CONTRACTOR'S SCOPE.
- ONE OF TWO FLOOR OUTLETS SHALL BE SET IN PLACE WITH CONDUIT FOR TELE/DATA AND POWER INSTALLED, HOWEVER SECOND FLOOR OUTLET SHALL BE LEFT "EMPTY" FOR FUTURE USE - NO INSERTS, OUTLETS, ETC. COORDINATE WITH TENANT ARCHITECT, AND AV CONSULTANT ON WHICH FLOORBOX TO LEAVE SPARE FOR FUTURE USE AT EACH TABLE.
- 208V, 3 PHASE, 4 WIRE 40A STARLINE BUSWAY WITH (4) 20A QUADRUPEX RECEPTACLES. LOCATE RECEPTACLES PER IT CONSULTANT AND TENANT DIRECTION IN FIELD.
- PROVIDE MANUAL DISCONNECT SWITCH (3P-30NFSS) FOR FIRE SHUTTER, OR PROVIDE JUNCTION BOX WITH LOCKABLE CIRCUIT BREAKER AT THE PANELBOARD. COORDINATE WITH FIELD CONDITIONS, THE AHJ, AND THE MANUFACTURER'S REQUIREMENTS. PROVIDE CONNECTION AND CONTROL FROM FIRE ALARM SYSTEM.
- RECEPTACLES FOR TABLE MOUNTED TASK LIGHTING. COORDINATE EXACT MOUNTING HEIGHT AND LOCATION WITH THE ARCHITECT.
- FOR CONNECTION TO MOTORIZED WINDOW SHADES. PROVIDE CONTROL VIA LOCAL LIGHTING OR AV SYSTEM WITH KEYED MANUAL OVERRIDE. COORDINATE KEYED OVERRIDE AND ACCESS PANEL LOCATIONS WITH ARCHITECT. VERIFY ELECTRICAL PROVISIONS ARE SUITABLE FOR THE SUBMITTED WINDOW SHADE MOTORS.



Dewberry  
8401 Arlington Blvd.  
Fairfax, VA 22031  
703-549-0100



Ellerwood + Machado, LLC  
4245 North Fairfax Drive, Suite 850  
Arlington, VA 22203  
703-835-9989

LOUDOUN COUNTY

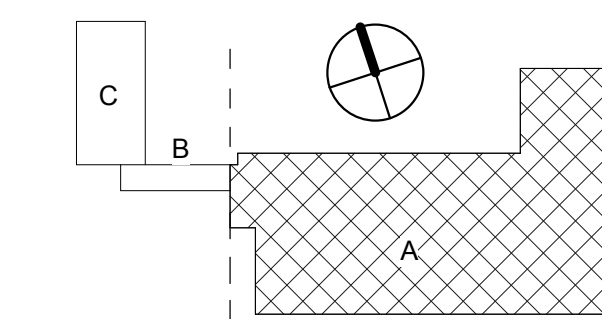
Loudoun County Phase III Expansion - New Courthouse

2 Church Street  
Leesburg, VA 20176

ISSUED FOR BID - VOLUME II

SEAL

KEY PLAN



SCALE  
0' 4' 8' 16'  
SCALE: 1/8" = 1'-0"

No.	Addendum 3 Description	6/18/2019 Date
1		

REVISIONS

DRAWN BY: Dewberry  
APPROVED BY: BJG  
CHECKED BY: BJG  
DATE: APRIL 08, 2019

TITLE

ELECTRICAL  
SECOND FLOOR  
POWER PLAN

PROJECT NO. 500628/15

E-202

SHEET NO.