

Maps

Chapter 1- Introduction

Loudoun County and Surrounding Area

Chapter 2- Land Use

Urban Policy Area Place Types
Suburban Policy Area Place Types
Transition Policy Area Place Types
Rural Policy Area Place Types
JLMA Place Types
Policy Areas
Priority Commercial Redevelopment Areas
Legacy Village Cores
Established Industrial Centers
Route 28 Tax District Area
Conservation Easements in Rural Policy Area

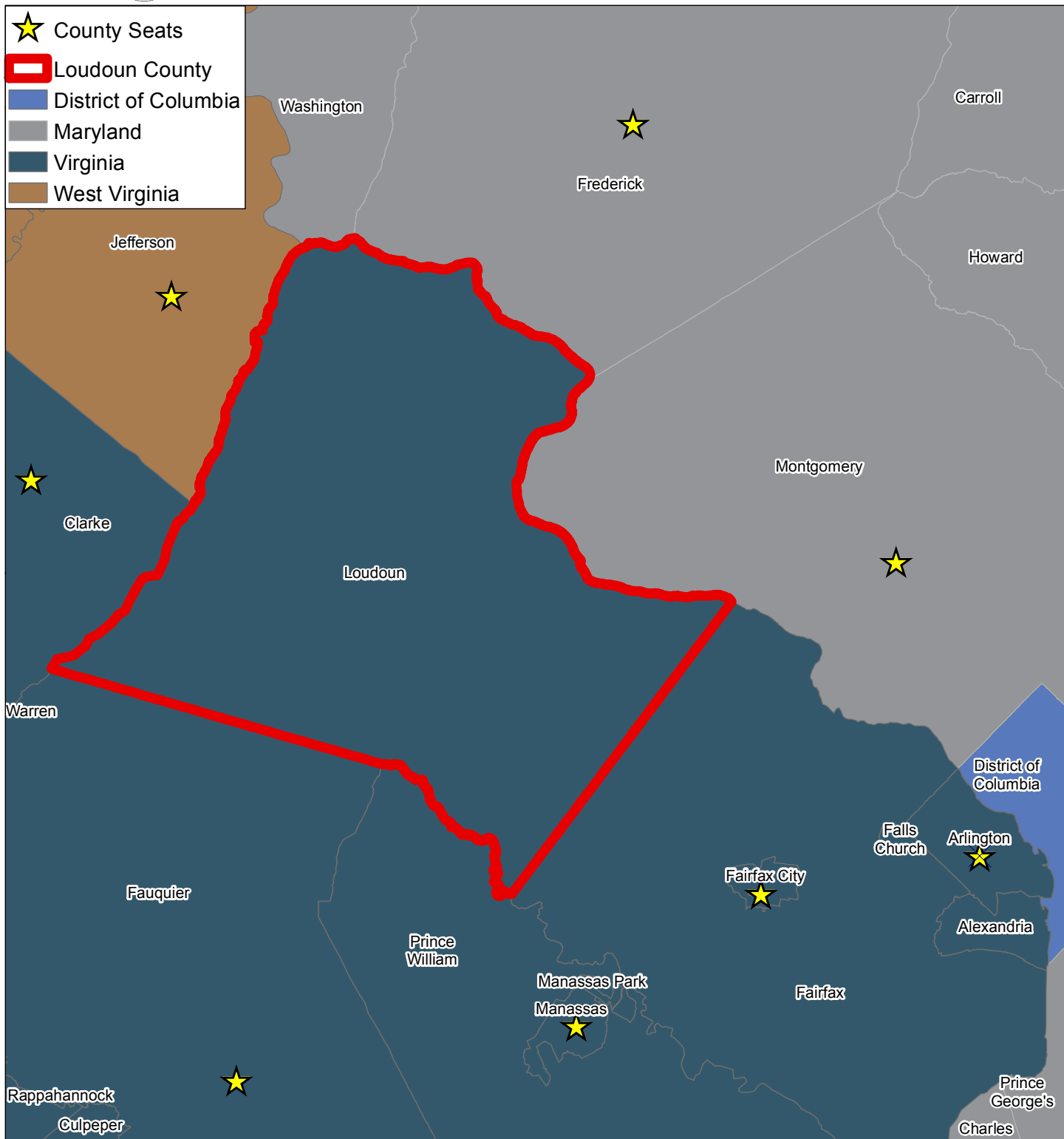
Chapter 3 - Natural and Heritage Resources

Natural Resources
River and Stream Corridor Resources
Watersheds
Historic Districts
Airport Impact Overlay District
African American Historic Communities
Impaired Streams
Limestone Overlay District

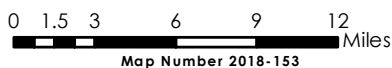
Chapter 6- Fiscal Management and Public Infrastructure

Existing and Planned Facilities
Small Area Plan Boundaries
Water/Sewer Service Areas
Trails and Parks

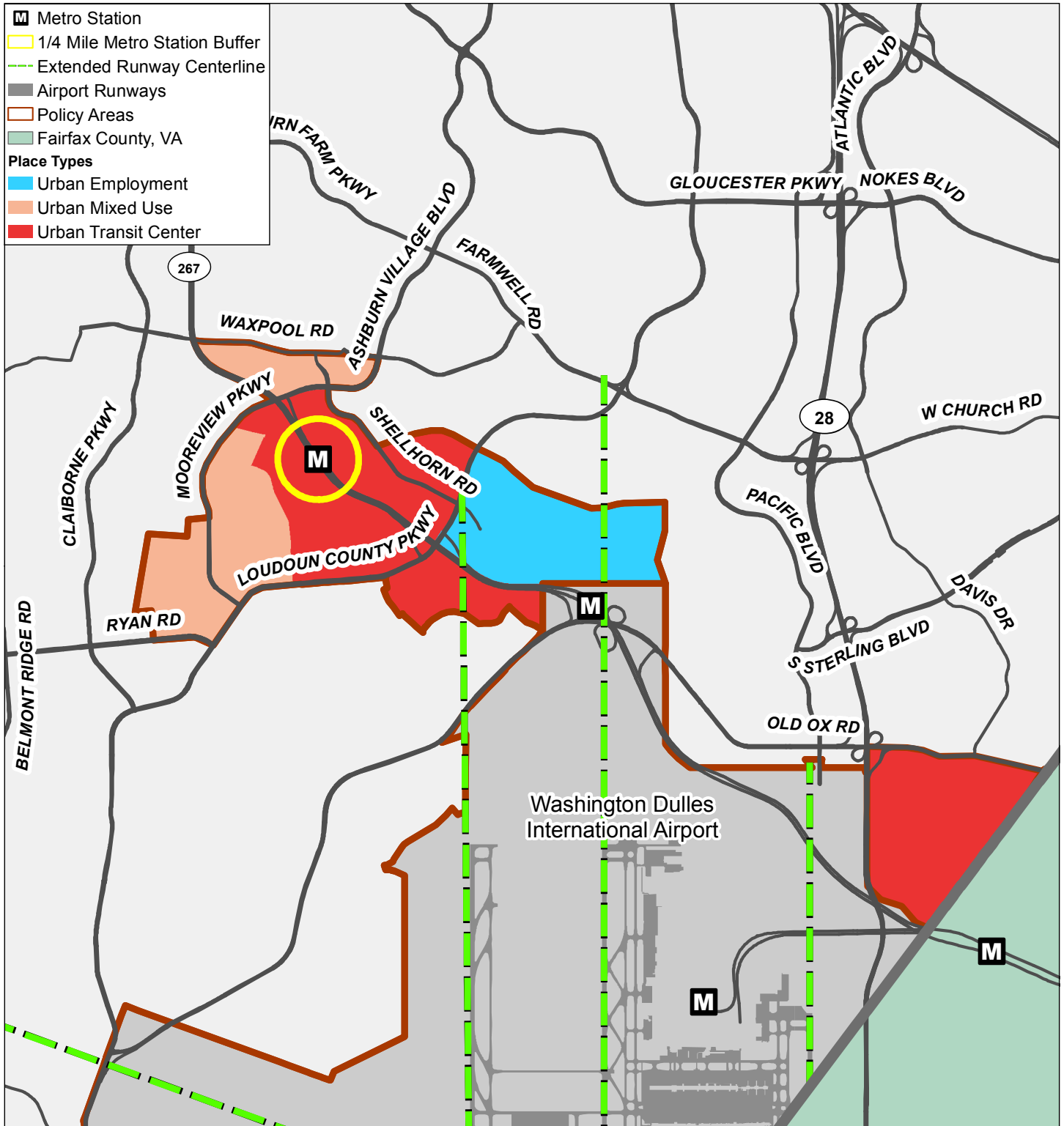
Loudoun County
**Loudoun County and
 Surrounding Area**
 2019 General Plan



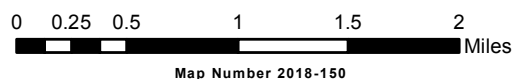
Loudoun County IS NOT LIABLE for any use of or reliance upon this map or any information contained herein. While reasonable efforts have been made to obtain accurate data, the County makes no warranty, expressed or implied, as to its accuracy, completeness, or fitness for use of any purpose.



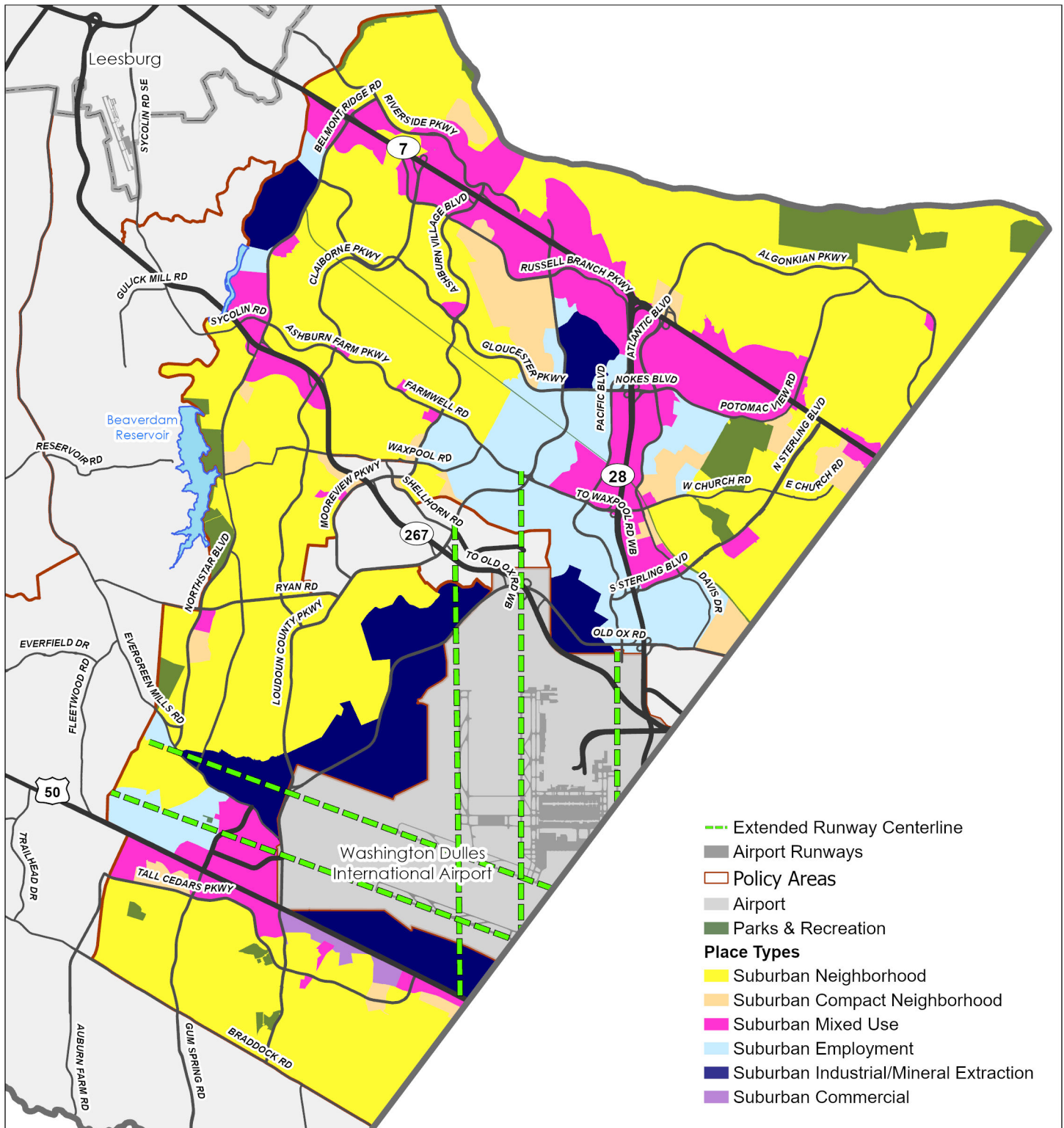
Loudoun County
Urban Policy Areas
Place Types
 2019 General Plan



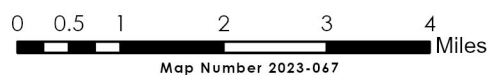
Loudoun County IS NOT LIABLE for any use of or reliance upon this map or any information contained herein. While reasonable efforts have been made to obtain accurate data, the County makes no warranty, expressed or implied, as to its accuracy, completeness, or fitness for use of any purpose.



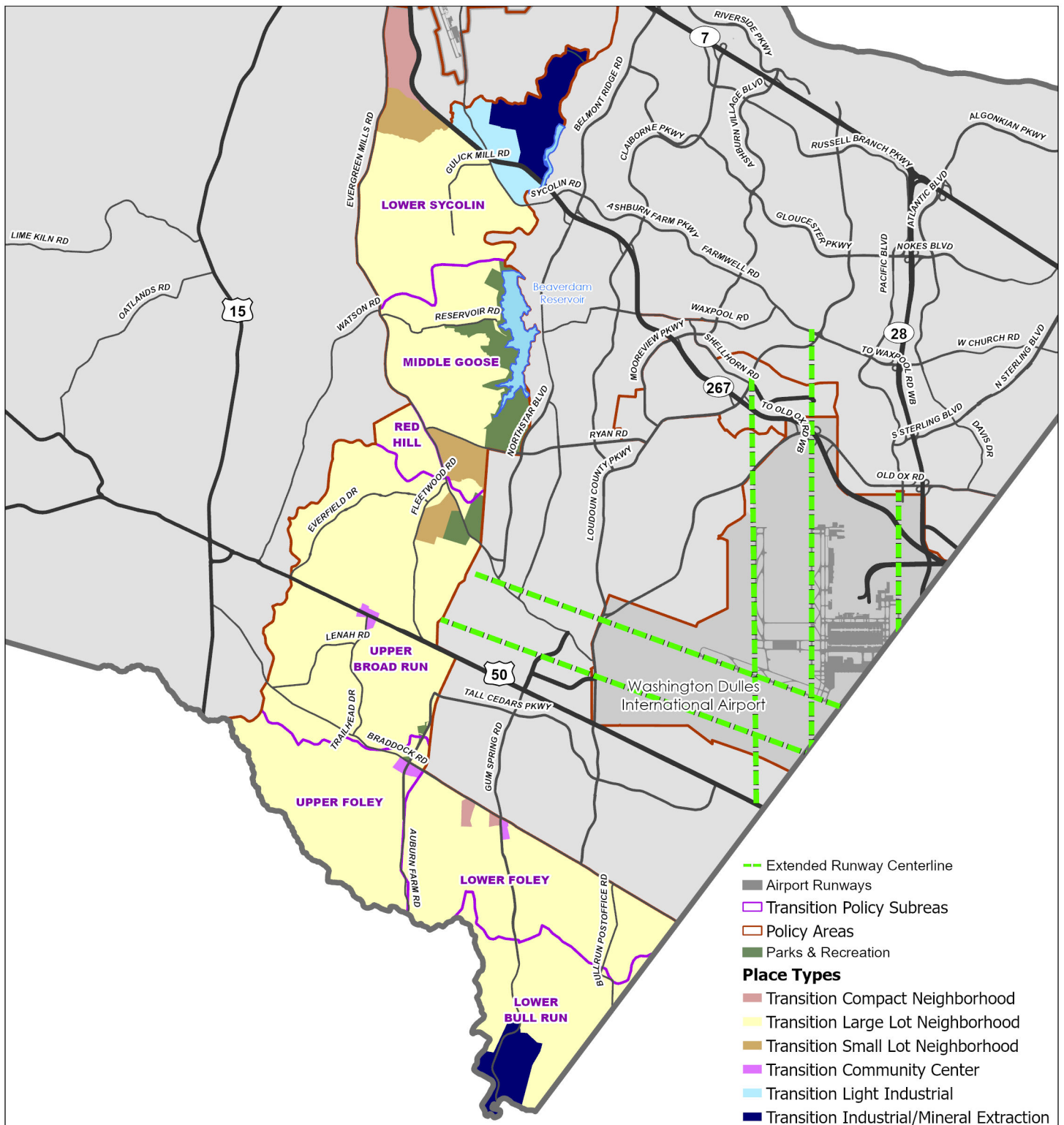
Loudoun County
Suburban Policy Area
Place Types
 2019 General Plan



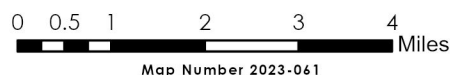
Loudoun County IS NOT LIABLE for any use of or reliance upon this map or any information contained herein. While reasonable efforts have been made to obtain accurate data, the County makes no warranty, expressed or implied, as to its accuracy, completeness, or fitness for use of any purpose.



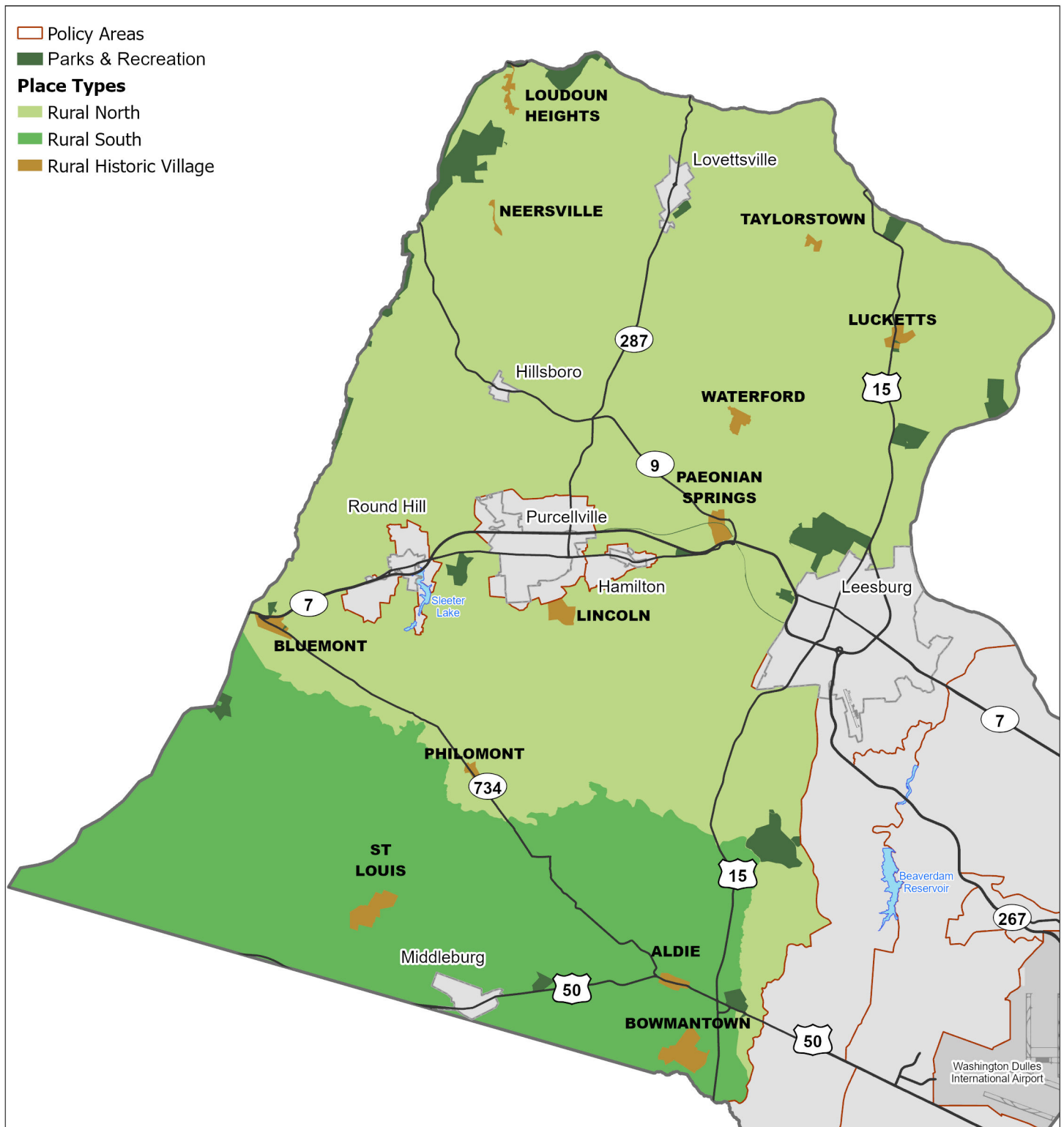
Loudoun County
Transition Policy Area
Place Types
 2019 General Plan



Loudoun County IS NOT LIABLE for any use of or reliance upon this map or any information contained herein. While reasonable efforts have been made to obtain accurate data, the County makes no warranty, expressed or implied, as to its accuracy, completeness, or fitness for use of any purpose.



Loudoun County
Rural Policy Area
Place Types
 2019 General Plan

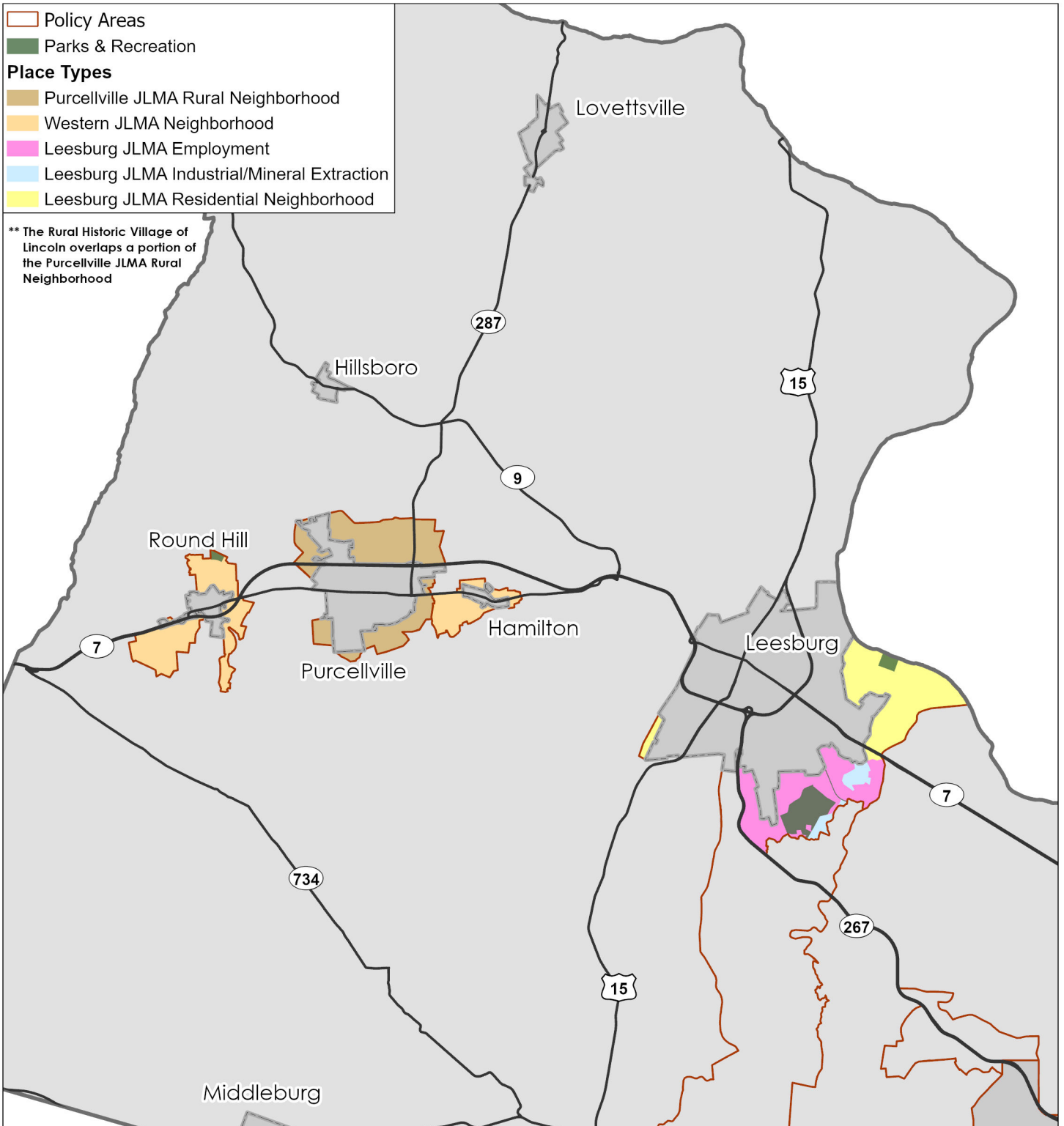


Loudoun County IS NOT LIABLE for any use of or reliance upon this map or any information contained herein. While reasonable efforts have been made to obtain accurate data, the County makes no warranty, expressed or implied, as to its accuracy, completeness, or fitness for use of any purpose.

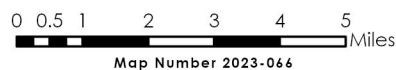
0 1 2 4 6 8 Miles
 Map Number 2023-065

JLMA Place Types

2019 General Plan

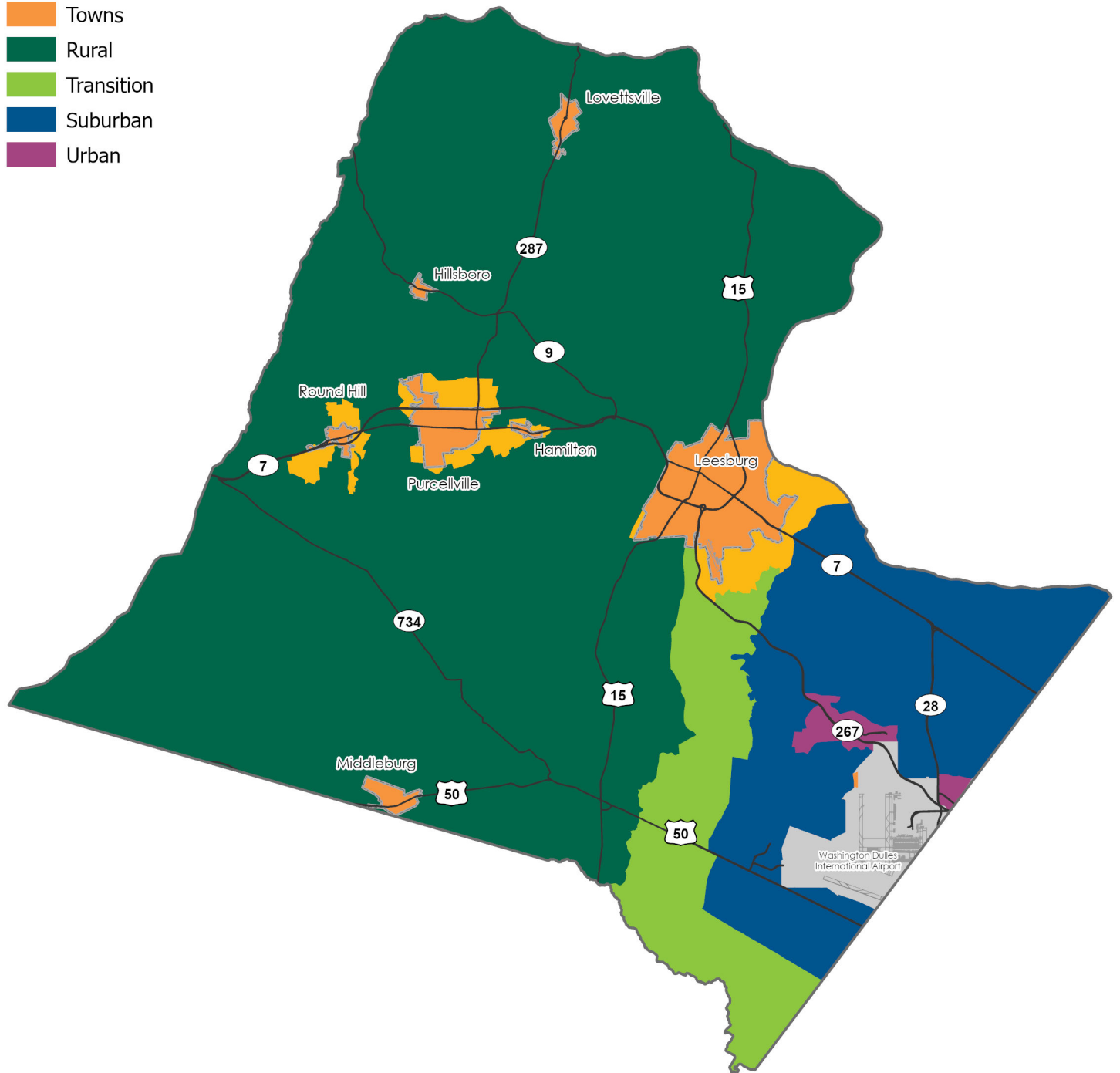


Loudoun County IS NOT LIABLE for any use of or reliance upon this map or any information contained herein. While reasonable efforts have been made to obtain accurate data, the County makes no warranty, expressed or implied, as to its accuracy, completeness, or fitness for use of any purpose.

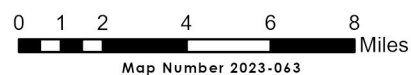




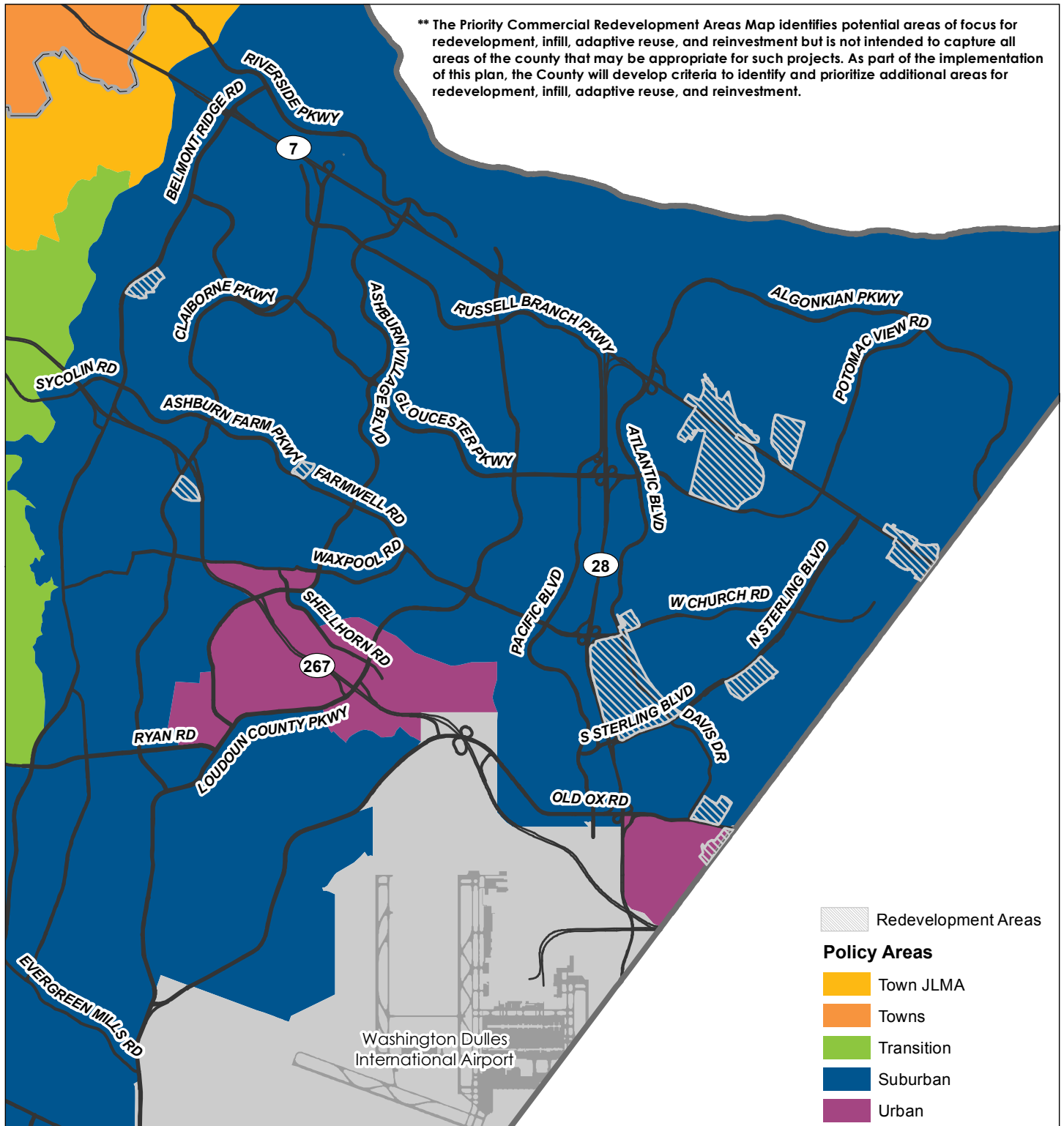
- Town JLMA
- Towns
- Rural
- Transition
- Suburban
- Urban



Loudoun County IS NOT LIABLE for any use of or reliance upon this map or any information contained herein. While reasonable efforts have been made to obtain accurate data, the County makes no warranty, expressed or implied, as to its accuracy, completeness, or fitness for use of any purpose.

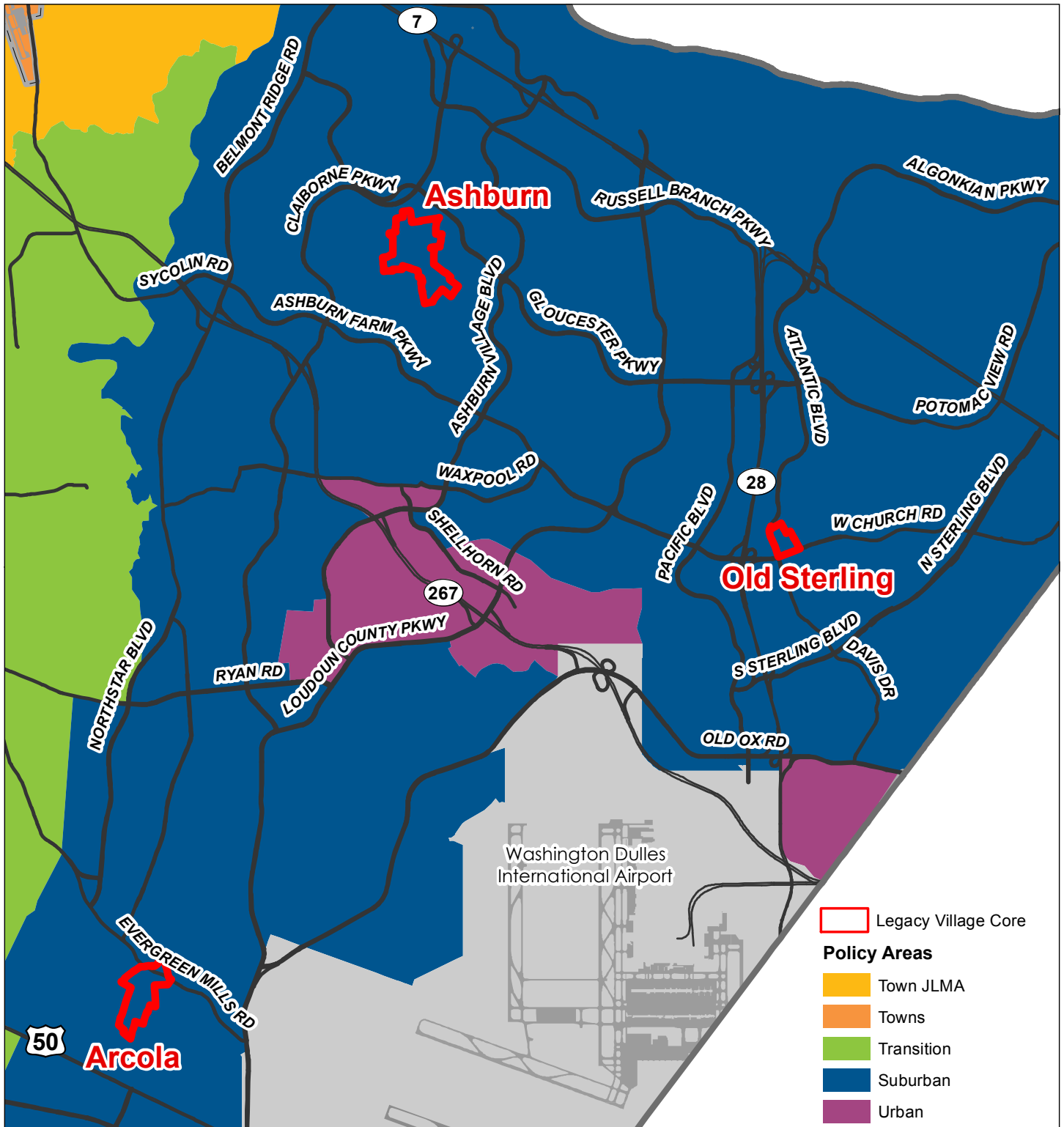


Loudoun County
**Priority Commercial
 Redevelopment Areas**
 2019 General Plan

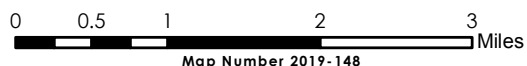


Loudoun County is NOT LIABLE for any use of or reliance upon this map or any information contained herein. While reasonable efforts have been made to obtain accurate data, the County makes no warranty, expressed or implied, as to its accuracy, completeness, or fitness for use of any purpose.

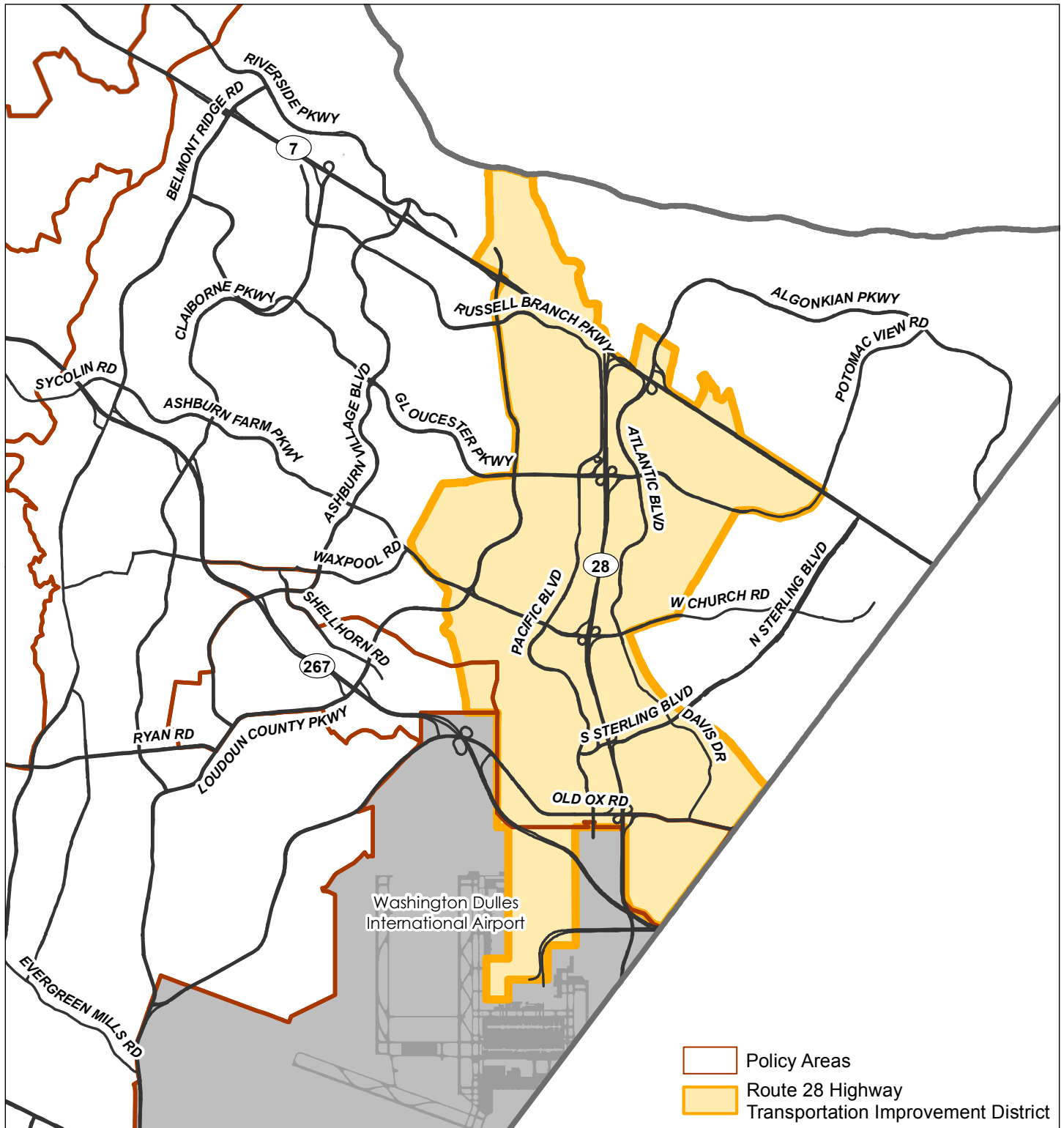
0 0.5 1 2 3 Miles
 Map Number 2018-156



Loudoun County IS NOT LIABLE for any use of or reliance upon this map or any information contained herein. While reasonable efforts have been made to obtain accurate data, the County makes no warranty, expressed or implied, as to its accuracy, completeness, or fitness for use of any purpose.



Loudoun County
**Route 28 Highway Transportation
Improvement District Area**
2019 General Plan



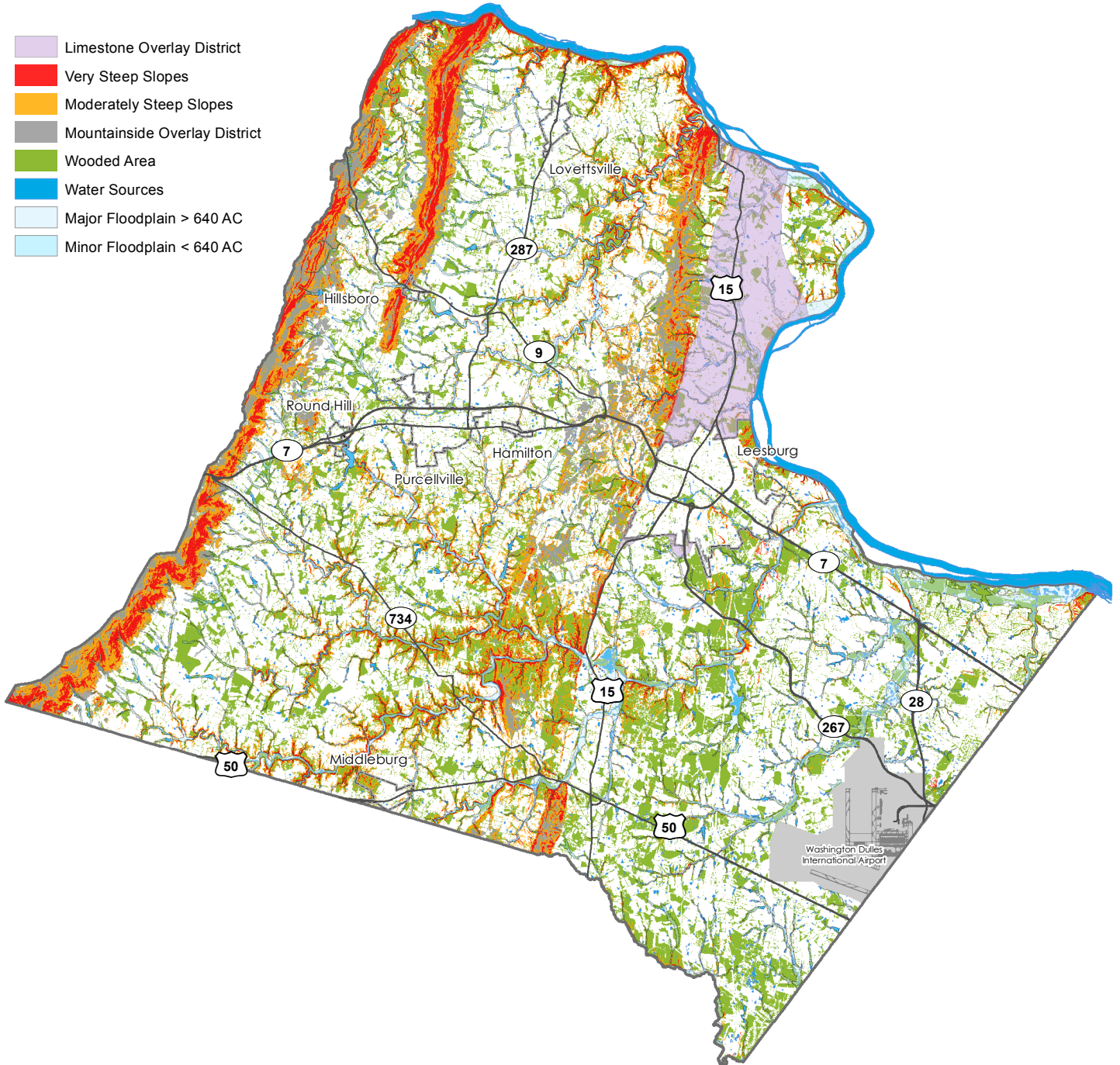
Loudoun County IS NOT LIABLE for any use of or reliance upon this map or any information contained herein. While reasonable efforts have been made to obtain accurate data, the County makes no warranty, expressed or implied, as to its accuracy, completeness, or fitness for use of any purpose.



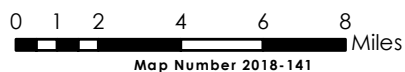
Loudoun County
Natural & Environmental Resources
 2019 General Plan



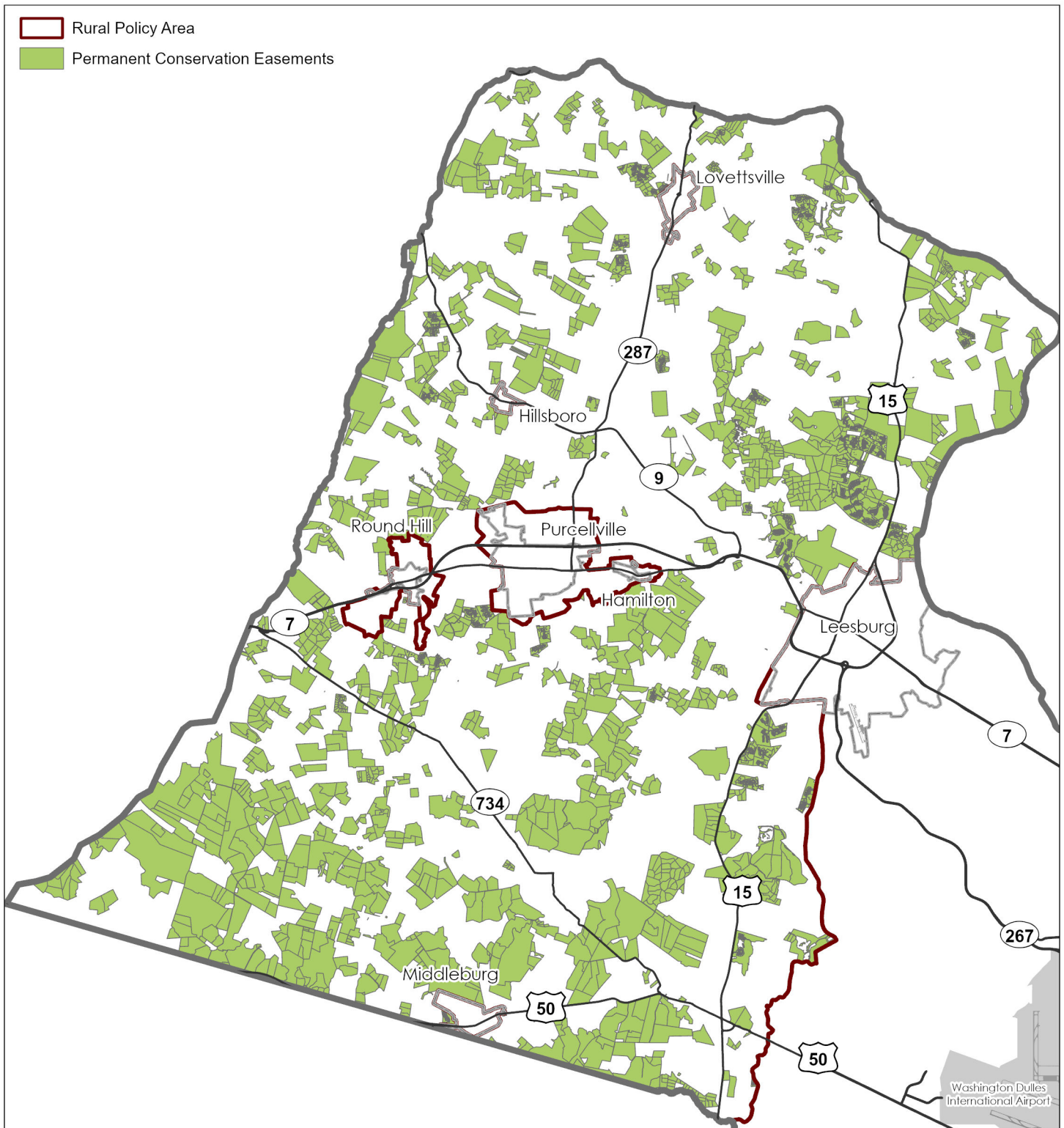
- Limestone Overlay District
- Very Steep Slopes
- Moderately Steep Slopes
- Mountainside Overlay District
- Wooded Area
- Water Sources
- Major Floodplain > 640 AC
- Minor Floodplain < 640 AC



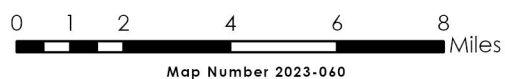
Loudoun County IS NOT LIABLE for any use of or reliance upon this map or any information contained herein. While reasonable efforts have been made to obtain accurate data, the County makes no warranty, expressed or implied, as to its accuracy, completeness, or fitness for use of any purpose.



Loudoun County
**Conservation Easements
in Rural Policy Area: 2023**
2019 General Plan



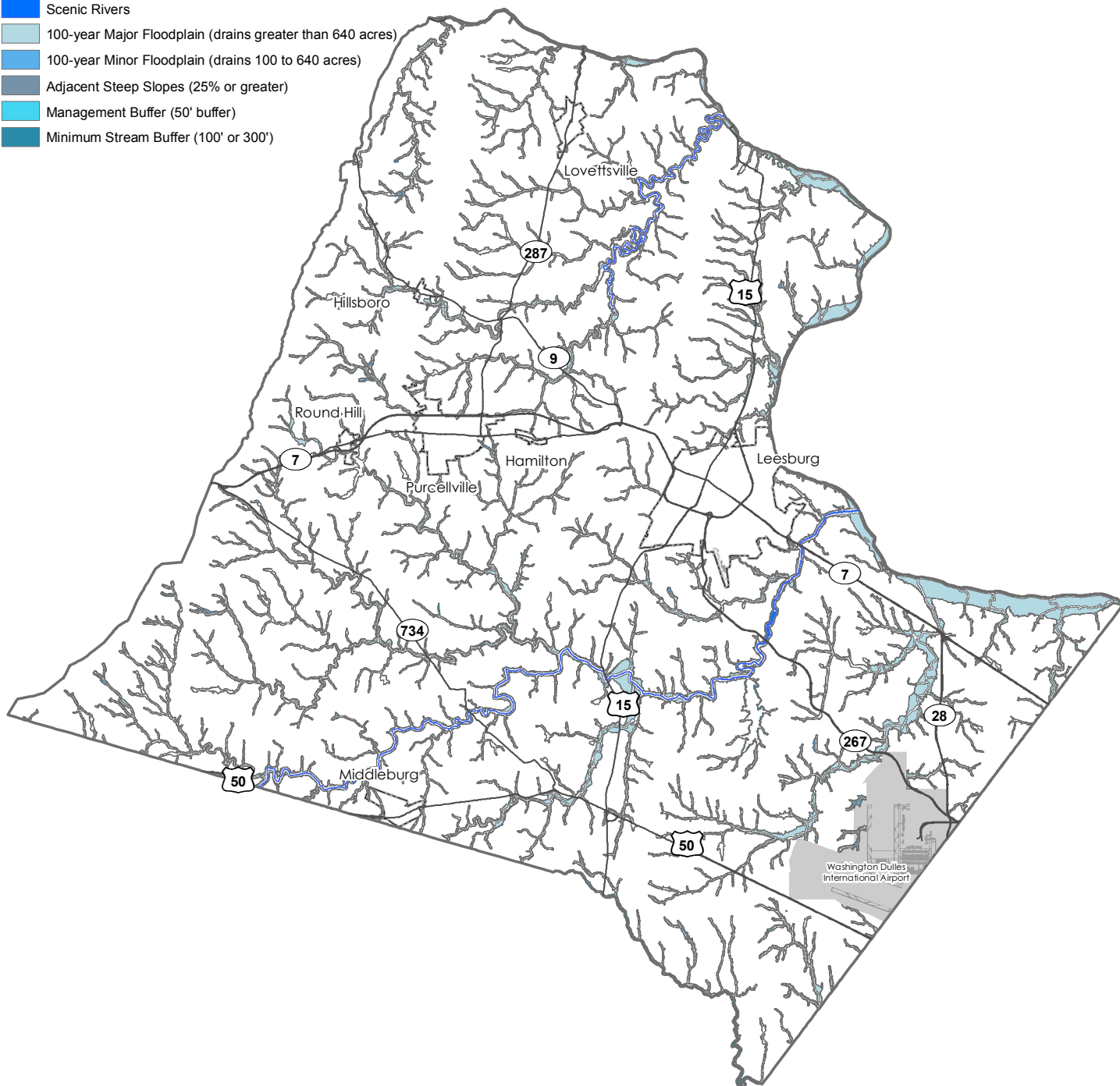
Loudoun County IS NOT LIABLE for any use of or reliance upon this map or any information contained herein. While reasonable efforts have been made to obtain accurate data, the County makes no warranty, expressed or implied, as to its accuracy, completeness, or fitness for use of any purpose.



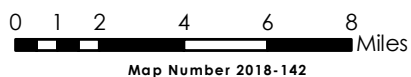
Loudoun County
**River and Stream
 Corridor Resources**
 2019 General Plan

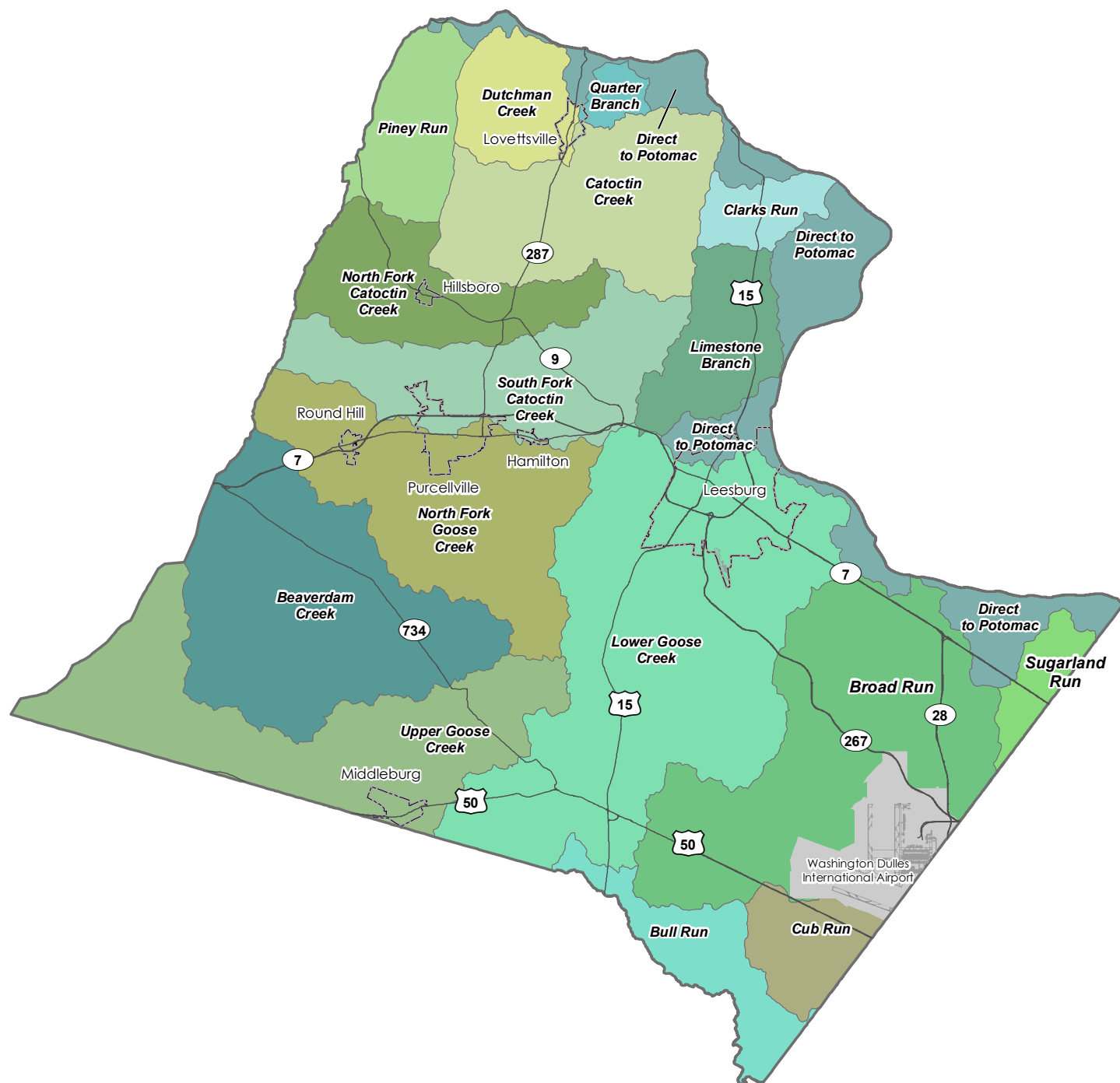


- Scenic Rivers
- 100-year Major Floodplain (drains greater than 640 acres)
- 100-year Minor Floodplain (drains 100 to 640 acres)
- Adjacent Steep Slopes (25% or greater)
- Management Buffer (50' buffer)
- Minimum Stream Buffer (100' or 300')

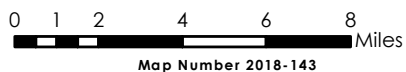


Loudoun County IS NOT LIABLE for any use of or reliance upon this map or any information contained herein. While reasonable efforts have been made to obtain accurate data, the County makes no warranty, expressed or implied, as to its accuracy, completeness, or fitness for use of any purpose.





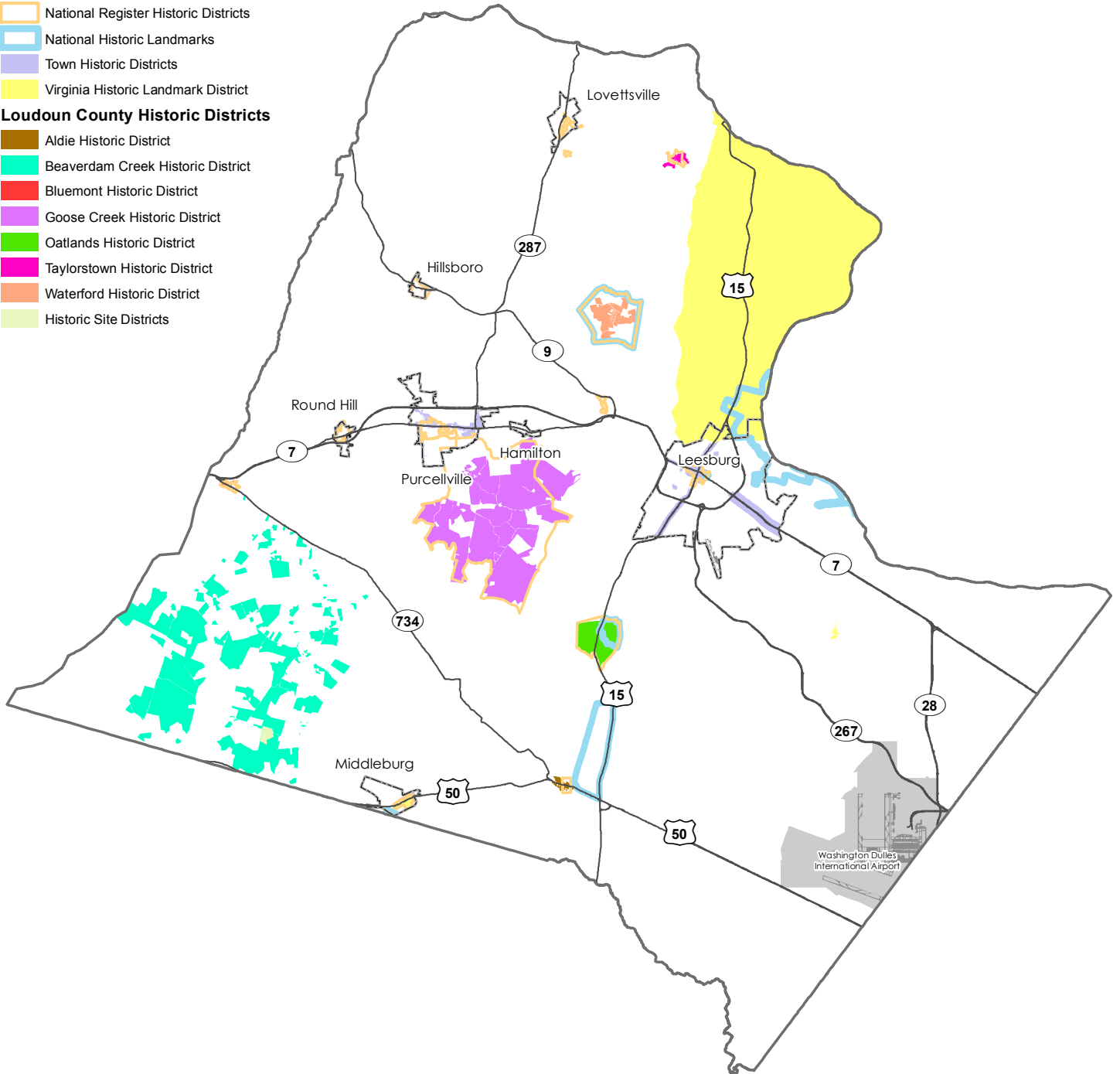
Loudoun County IS NOT LIABLE for any use of or reliance upon this map or any information contained herein. While reasonable efforts have been made to obtain accurate data, the County makes no warranty, expressed or implied, as to its accuracy, completeness, or fitness for use of any purpose.



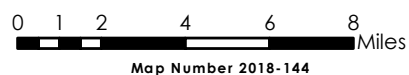
Loudoun County
Historic Districts
 2019 General Plan



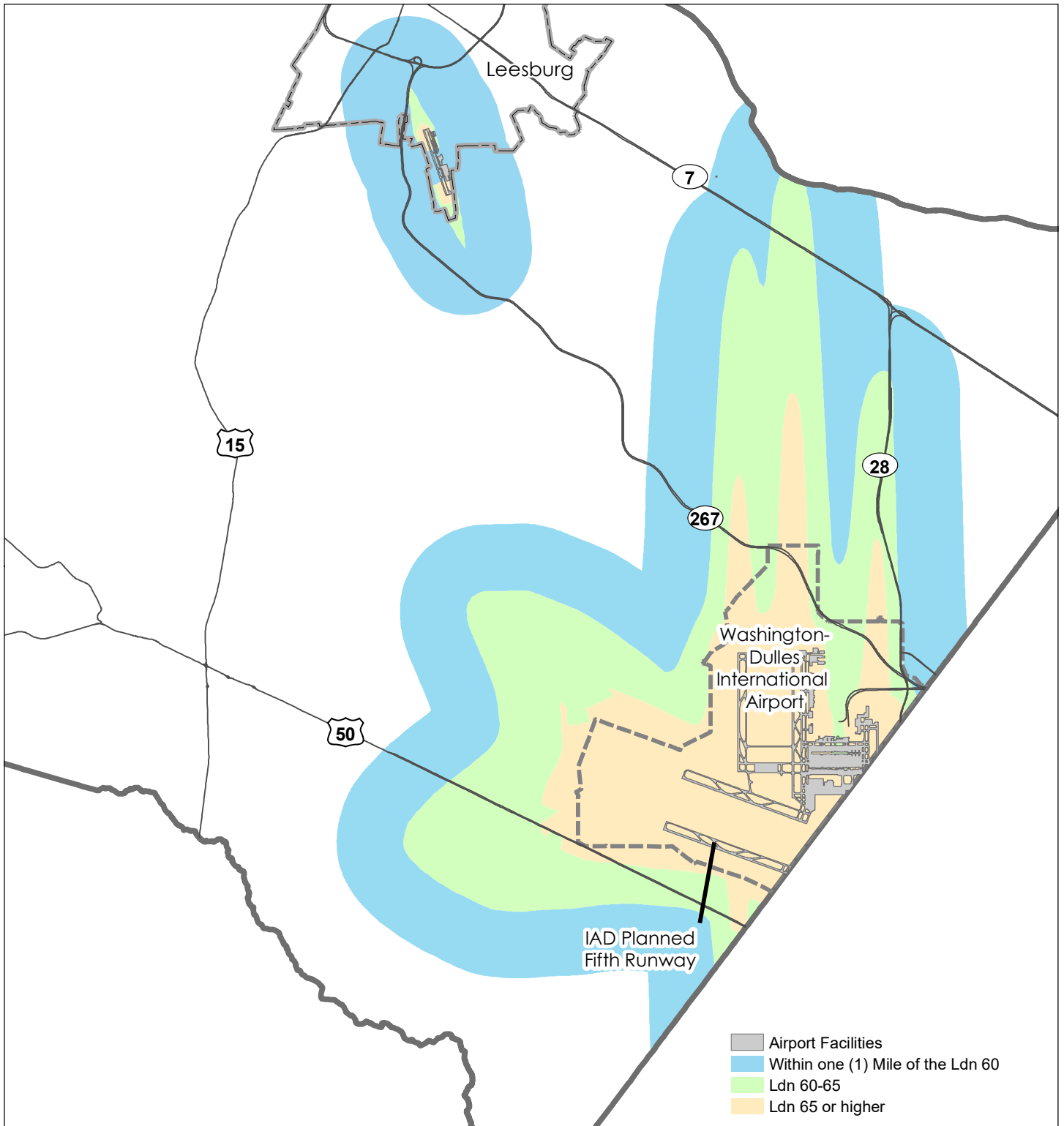
- National Register Historic Districts
- National Historic Landmarks
- Town Historic Districts
- Virginia Historic Landmark District
- Loudoun County Historic Districts**
- Aldie Historic District
- Beaverdam Creek Historic District
- Bluemont Historic District
- Goose Creek Historic District
- Oatlands Historic District
- Taylorstown Historic District
- Waterford Historic District
- Historic Site Districts



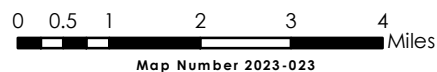
Loudoun County IS NOT LIABLE for any use of or reliance upon this map or any information contained herein. While reasonable efforts have been made to obtain accurate data, the County makes no warranty, expressed or implied, as to its accuracy, completeness, or fitness for use of any purpose.



Loudoun County
**Airport Noise
 Impact Area**
 2019 General Plan



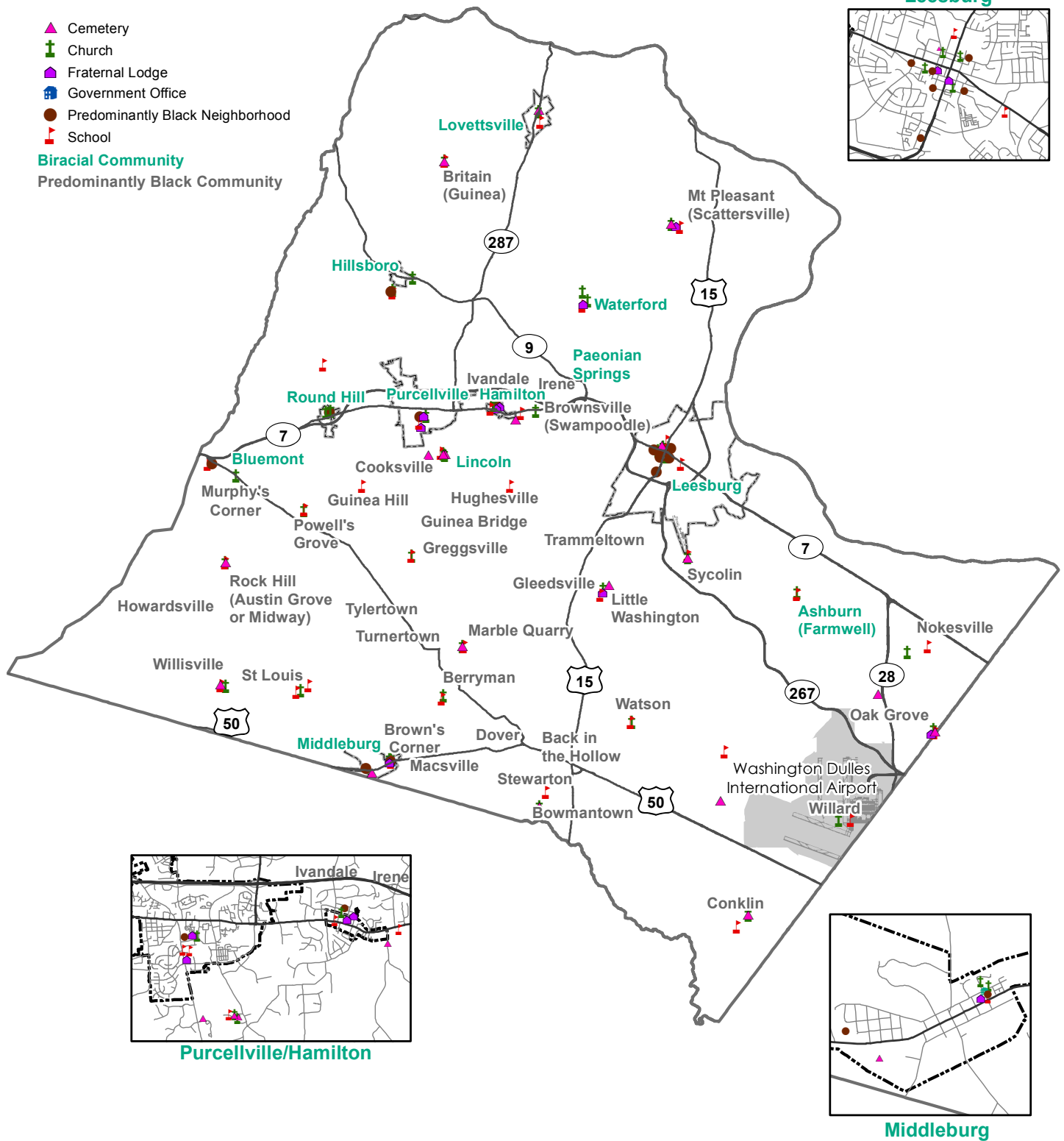
Loudoun County IS NOT LIABLE for any use of or reliance upon this map or any information contained herein. While reasonable efforts have been made to obtain accurate data, the County makes no warranty, expressed or implied, as to its accuracy, completeness, or fitness for use of any purpose.



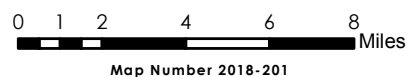
Loudoun County
**African American
 Historic Communities**
 2019 General Plan



- ▲ Cemetery
- ✚ Church
- ✚ Fraternal Lodge
- 🏛 Government Office
- Predominantly Black Neighborhood
- 🏫 School
- Biracial Community**
- Predominantly Black Community**



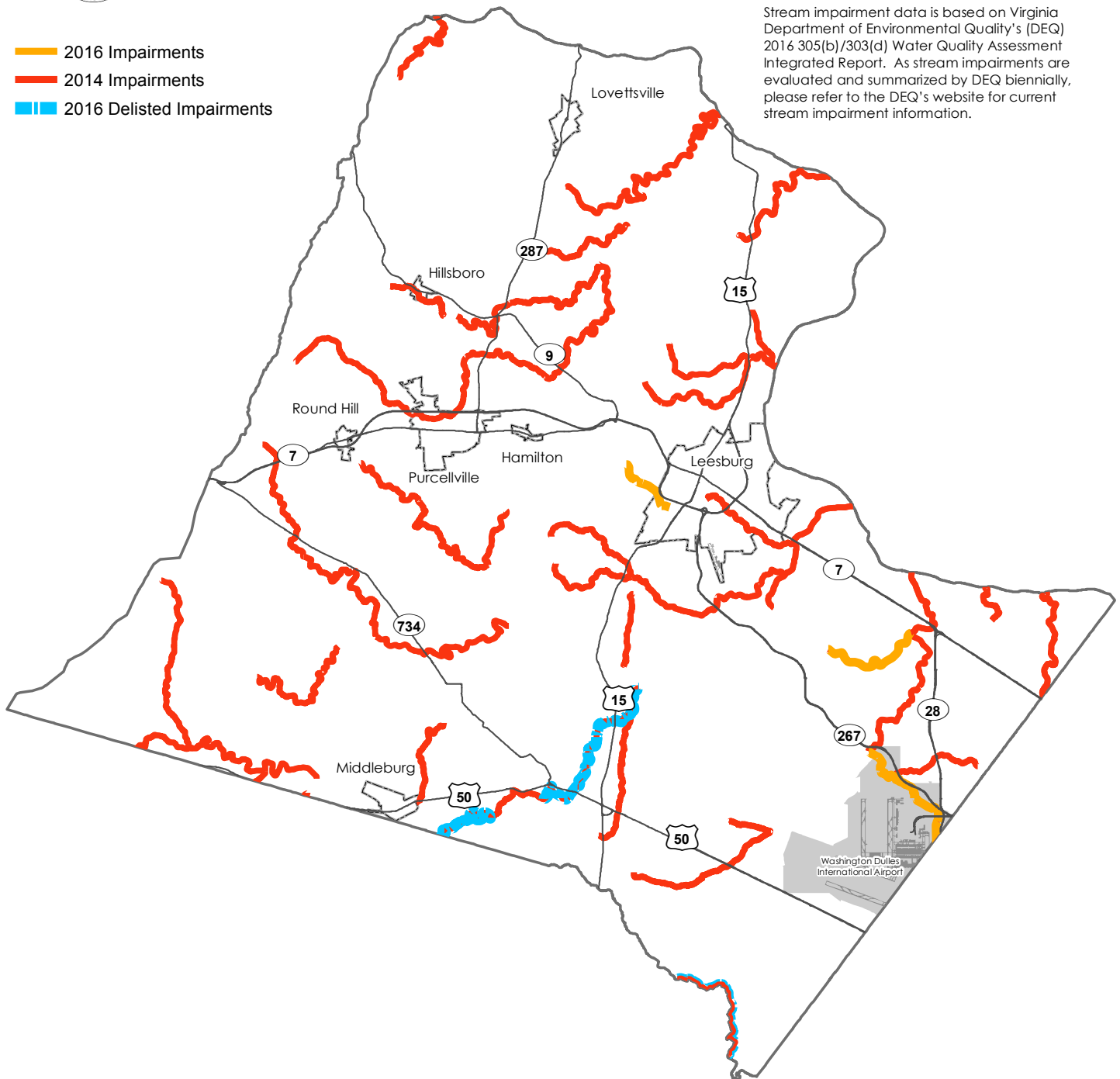
Loudoun County IS NOT LIABLE for any use of or reliance upon this map or any information contained herein. While reasonable efforts have been made to obtain accurate data, the County makes no warranty, expressed or implied, as to its accuracy, completeness, or fitness for use of any purpose.



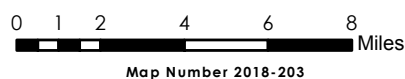


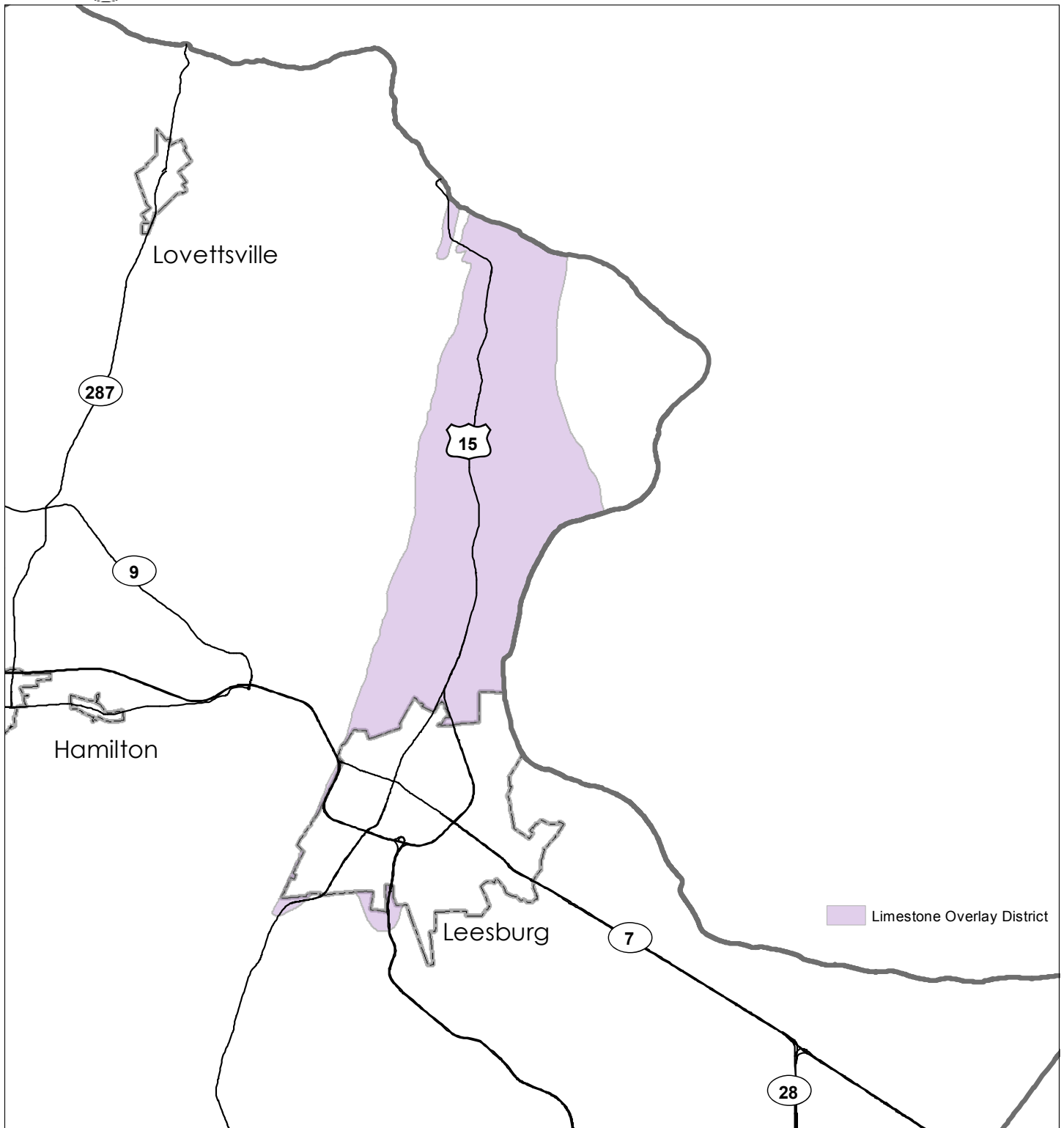
- 2016 Impairments
- 2014 Impairments
- 2016 Delisted Impairments

Stream impairment data is based on Virginia Department of Environmental Quality's (DEQ) 2016 305(b)/303(d) Water Quality Assessment Integrated Report. As stream impairments are evaluated and summarized by DEQ biennially, please refer to the DEQ's website for current stream impairment information.

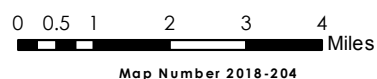


Loudoun County IS NOT LIABLE for any use of or reliance upon this map or any information contained herein. While reasonable efforts have been made to obtain accurate data, the County makes no warranty, expressed or implied, as to its accuracy, completeness, or fitness for use of any purpose.





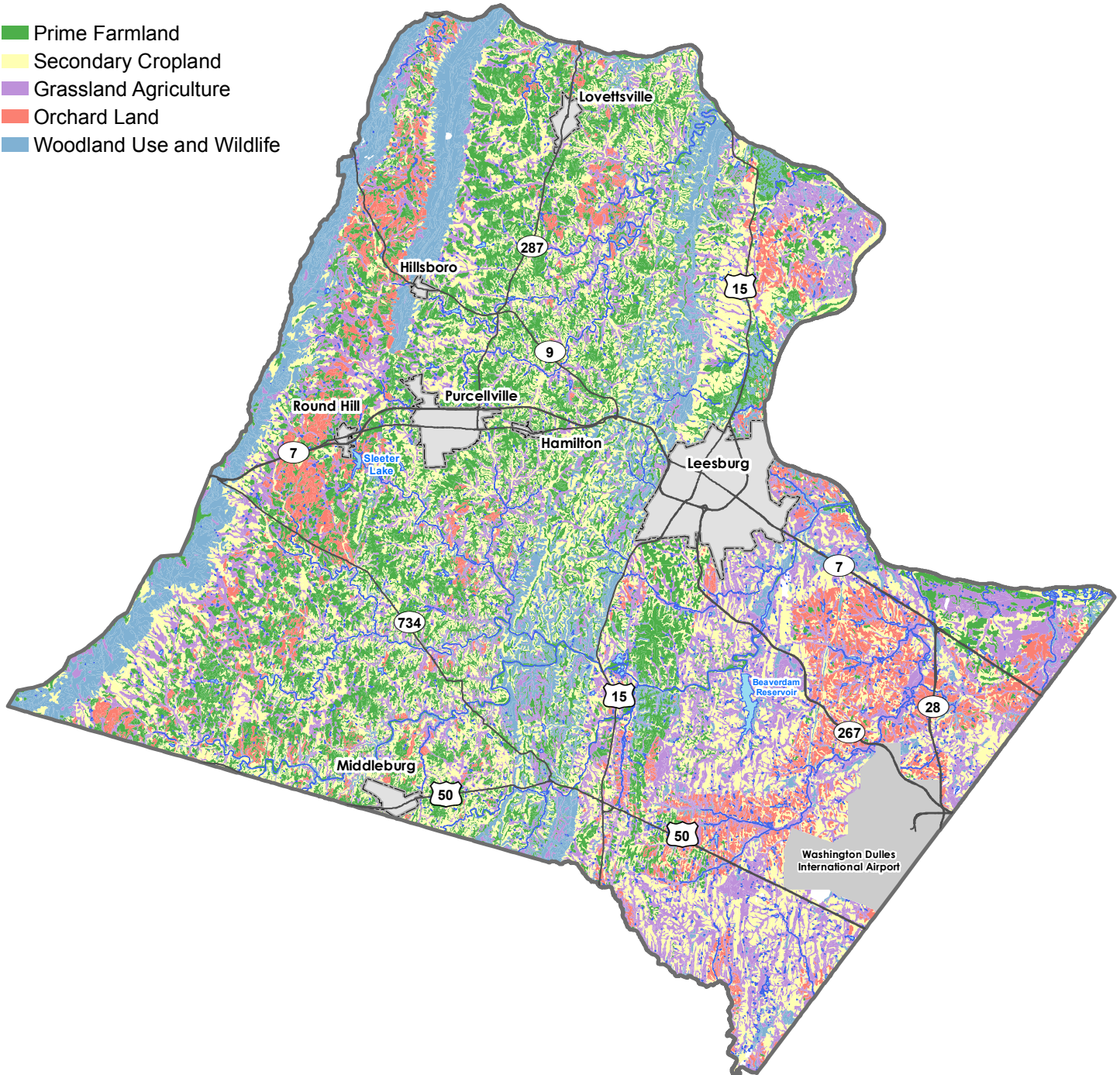
Loudoun County IS NOT LIABLE for any use of or reliance upon this map or any information contained herein. While reasonable efforts have been made to obtain accurate data, the County makes no warranty, expressed or implied, as to its accuracy, completeness, or fitness for use of any purpose.



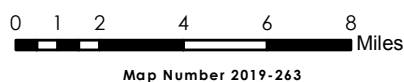
Loudoun County
**Prime
Agricultural Soils**
2019 General Plan



- Prime Farmland
- Secondary Cropland
- Grassland Agriculture
- Orchard Land
- Woodland Use and Wildlife



Loudoun County IS NOT LIABLE for any use of or reliance upon this map or any information contained herein. While reasonable efforts have been made to obtain accurate data, the County makes no warranty, expressed or implied, as to its accuracy, completeness, or fitness for use of any purpose.



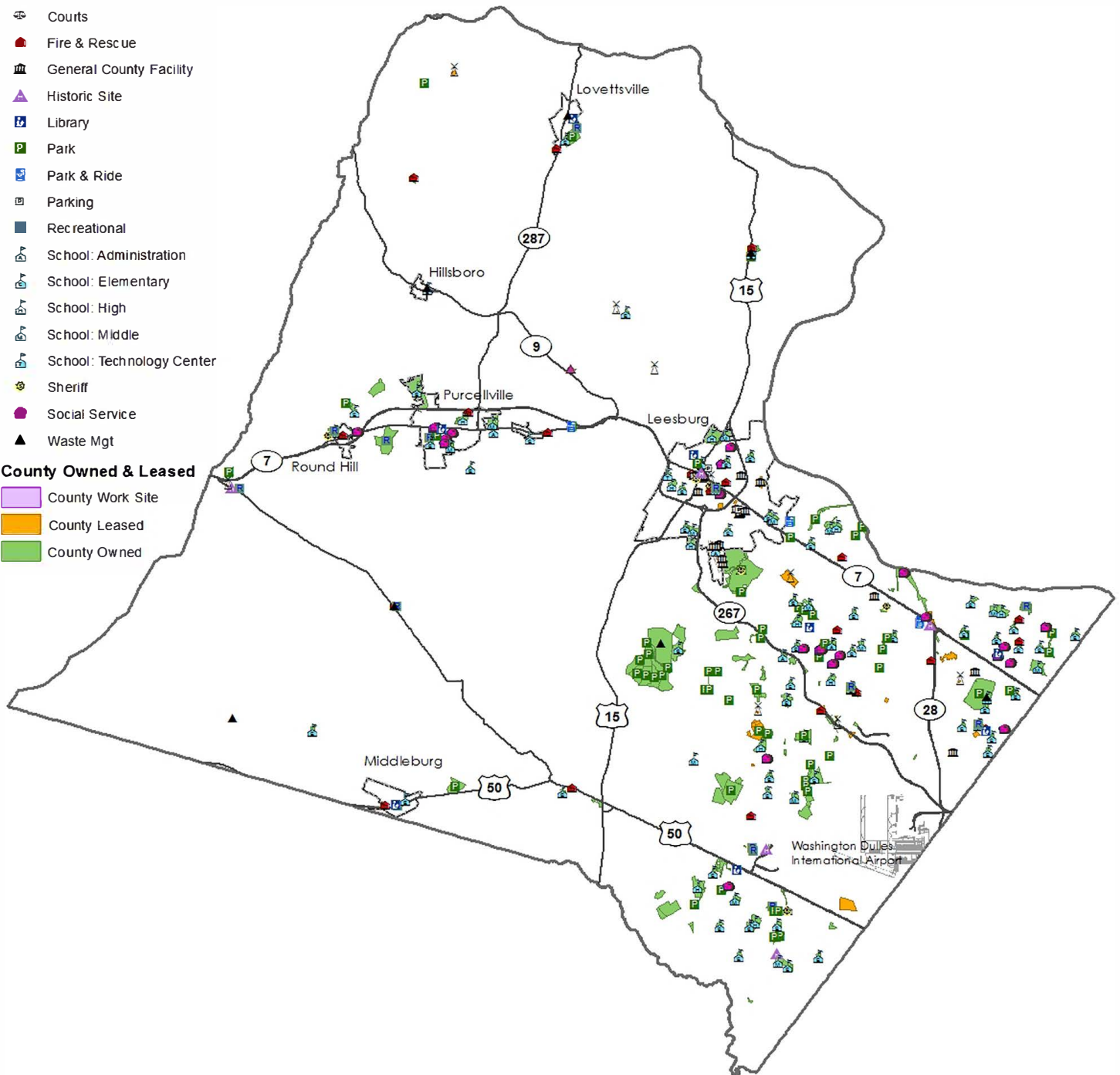
Loudoun County
**Existing
and Planned
Facilities**
2019 General Plan



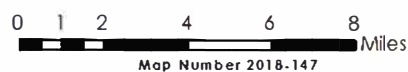
- Animal Control
- Comm Facility
- Courts
- Fire & Rescue
- General County Facility
- Historic Site
- Library
- Park
- Park & Ride
- Parking
- Recreational
- School: Administration
- School: Elementary
- School: High
- School: Middle
- School: Technology Center
- Sheriff
- Social Service
- Waste Mgt

County Owned & Leased

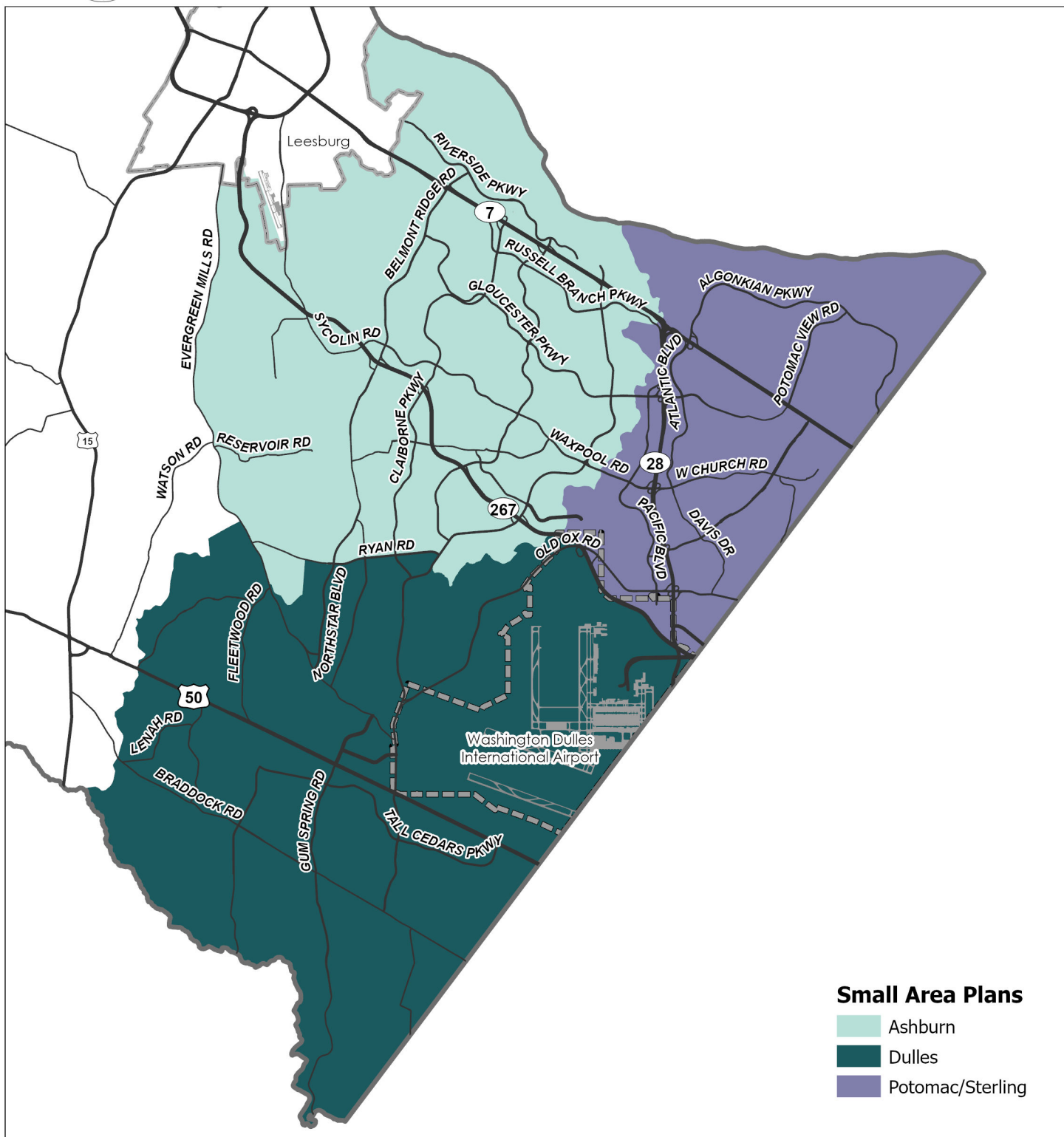
- County Work Site
- County Leased
- County Owned



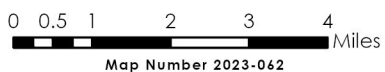
Loudoun County IS NOT LIABLE for any use of or reliance upon this map or any information contained herein. While reasonable efforts have been made to obtain accurate data, the County makes no warranty, expressed or implied, as to its accuracy, completeness, or fitness for use of any purpose.



Loudoun County
**Small Area
Plan Boundaries**
2019 General Plan



Loudoun County IS NOT LIABLE for any use of or reliance upon this map or any information contained herein. While reasonable efforts have been made to obtain accurate data, the County makes no warranty, expressed or implied, as to its accuracy, completeness, or fitness for use of any purpose.



Loudoun County
**Water/Sewer
 Service Areas: 2023**
 2019 General Plan

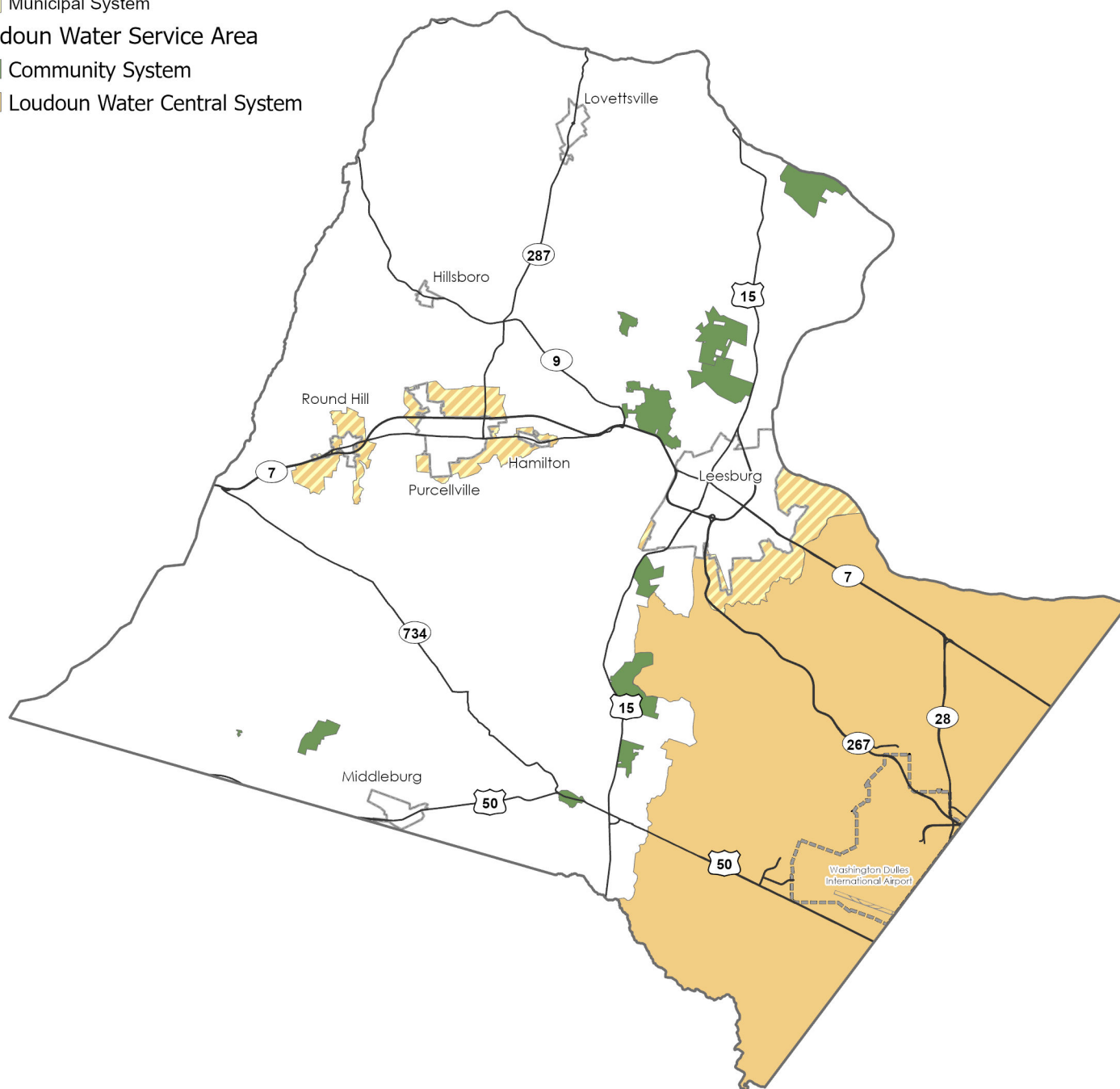


 Municipal System

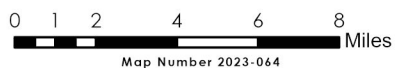
Loudoun Water Service Area

 Community System

 Loudoun Water Central System

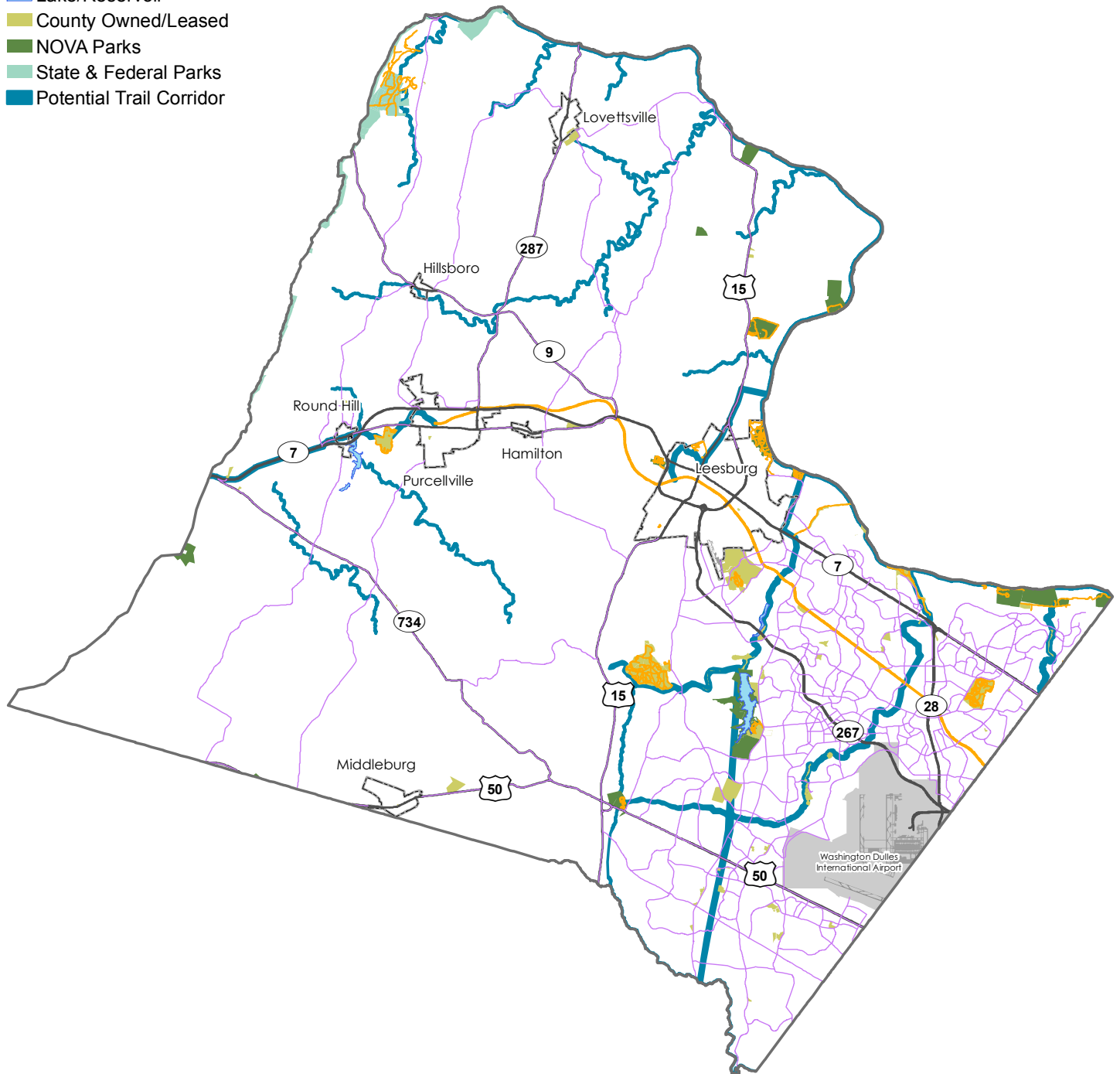


Loudoun County IS NOT LIABLE for any use of or reliance upon this map or any information contained herein. While reasonable efforts have been made to obtain accurate data, the County makes no warranty, expressed or implied, as to its accuracy, completeness, or fitness for use of any purpose.





- Existing/Planned Bike Lane/Roadside Trail
- Existing Recreation Trail
- NOVA Parks Trails
- Lake/Reservoir
- County Owned/Leased
- NOVA Parks
- State & Federal Parks
- Potential Trail Corridor



Loudoun County IS NOT LIABLE for any use of or reliance upon this map or any information contained herein. While reasonable efforts have been made to obtain accurate data, the County makes no warranty, expressed or implied, as to its accuracy, completeness, or fitness for use of any purpose.

