



Ashburn Station

County Limits of Responsibility

Ashburn Station — North
Details on Page 2

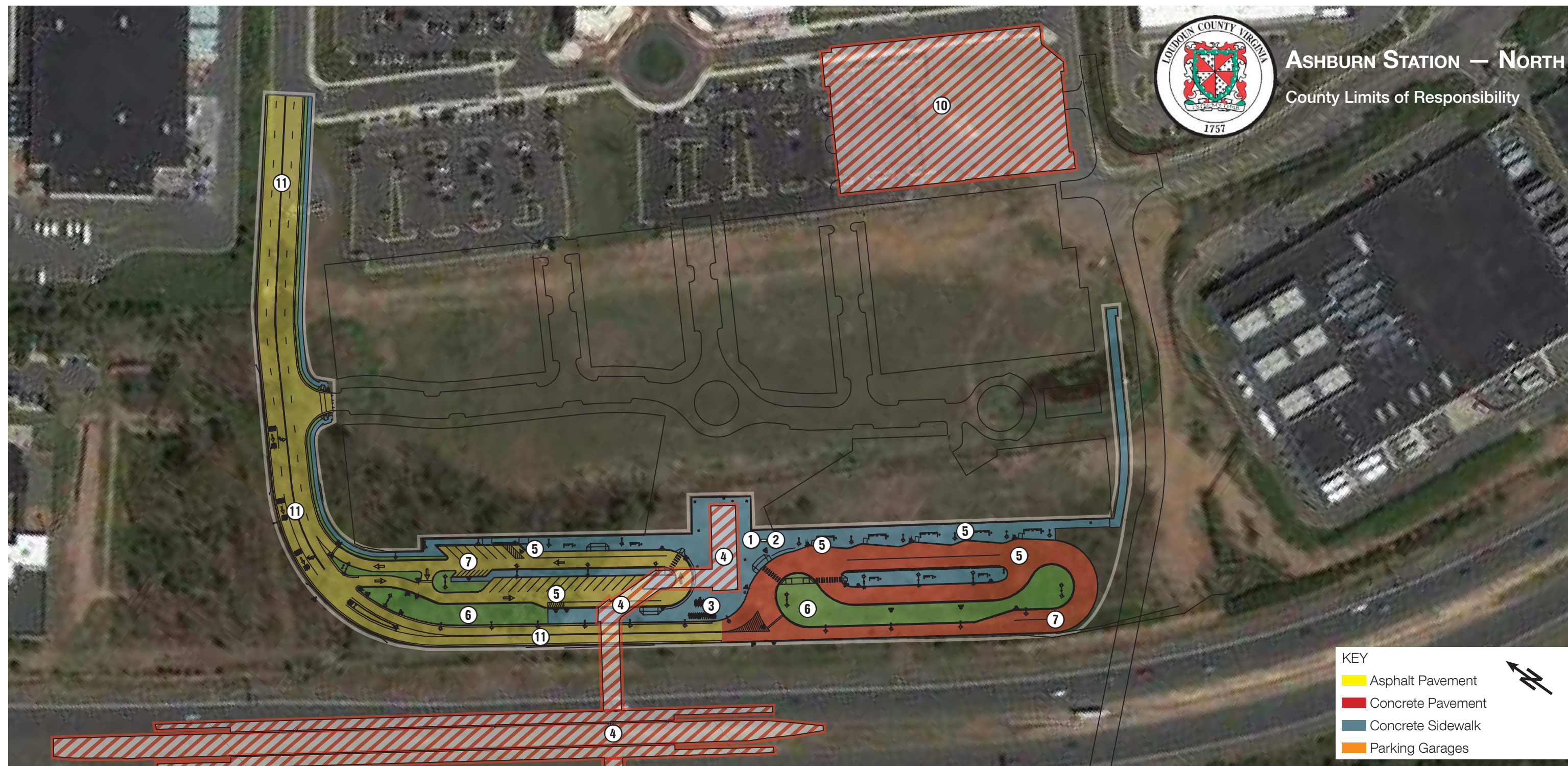
Vinegar Hill Drive
Details on Page 4

Ashburn Station — South
Details on Page 3

- KEY
- Asphalt Pavement
 - Concrete Pavement
 - Concrete Sidewalk
 - Parking Garages



Kimley»Horn



Entry Pavilion

- ① Sidewalk surrounding building (beyond 5 feet from building)
- ② Lighting at pavilion entrance beyond building
- ③ Bicycle racks, lockers & furniture
- ④ Not in County limits of responsibility

Pedestrian Bridge Between Station & Entry Pavilion

- ④ Not in County limits of responsibility (Area below pedestrian bridge within the extents is County's responsibility)

Station

- ④ Not in County limits of responsibility

Kiss & Ride Lots & On/Off-Site Bus Areas

- ⑤ Parking/circulation areas, bus bays, sidewalk/plaza areas (including shelters, lighting & furniture)
- ⑥ Landscape area
- ⑦ Stormwater management features (Catch basin pipes)

Parking Garages

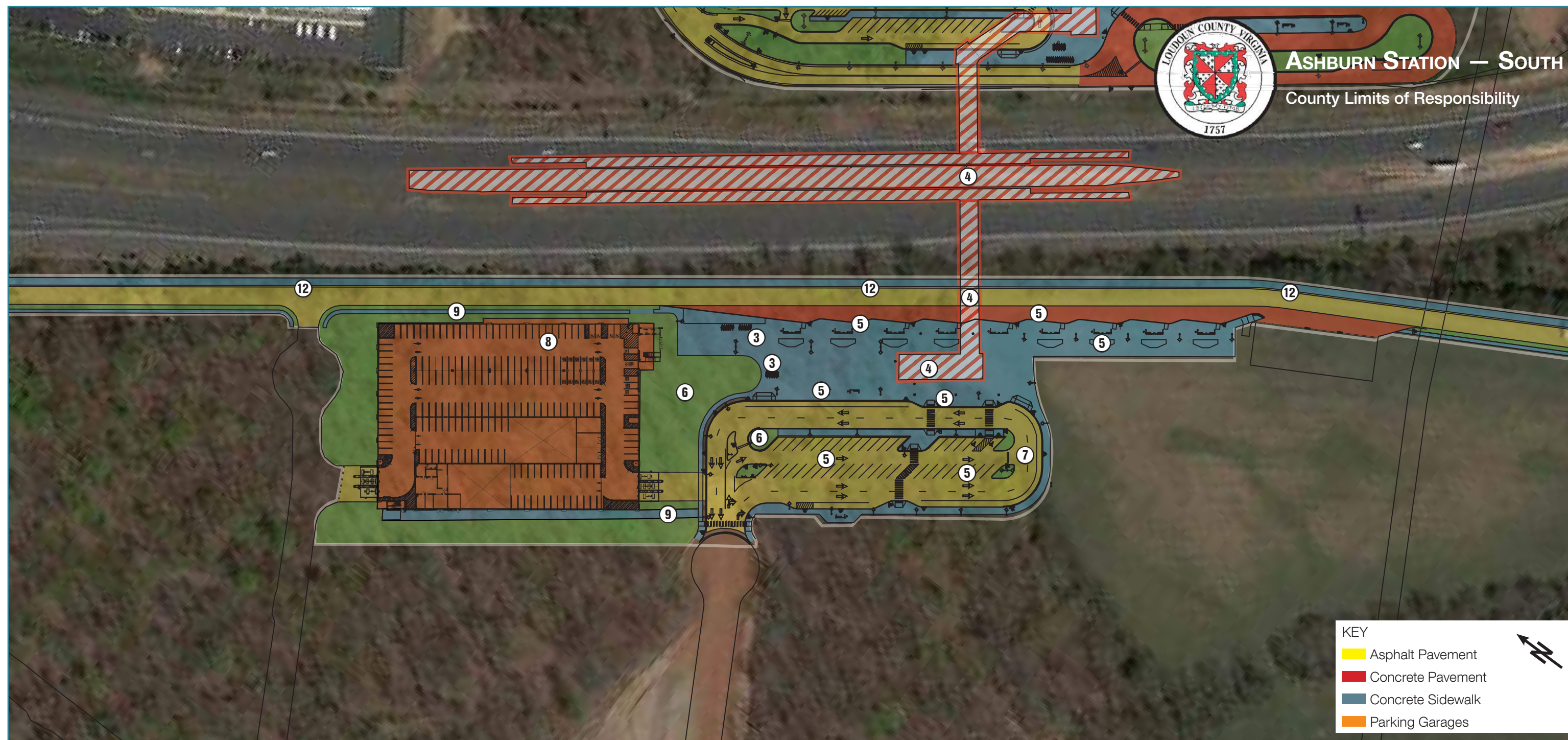
- ⑧ Garage structure including entrances/exits
- ⑨ Sidewalk connecting to parking garage
- ⑩ Not in County limit of responsibility

Entry Roadway

- ⑪ Roadway, sidewalk, lighting, drainage

Roadway/Pedestrian Facilities Adjacent to Station Access Facilities (Arterials, Collectors & Local Streets)

- ⑫ Roadway, sidewalk, greenway, lighting, drainage



Entry Pavilion

- ① Sidewalk surrounding building (beyond 5 feet from building)
- ② Lighting at pavilion entrance beyond building
- ③ Bicycle racks, lockers & furniture
- ④ Not in County limits of responsibility

Pedestrian Bridge Between Station & Entry Pavilion

- ④ Not in County limits of responsibility (Area below pedestrian bridge within the extents is County's responsibility)

Station

- ④ Not in County limits of responsibility

Kiss & Ride Lots & On/Off-Site Bus Areas

- ⑤ Parking/circulation areas, bus bays, sidewalk/plaza areas (including shelters, lighting & furniture)
- ⑥ Landscape area
- ⑦ Stormwater management features (Catch basins, pipes)

Parking Garages

- ⑧ Garage structure including entrances/exits
- ⑨ Sidewalk connecting to parking garage
- ⑩ Not in County limit of responsibility

Entry Roadway

- ⑪ Roadway, sidewalk, lighting, drainage

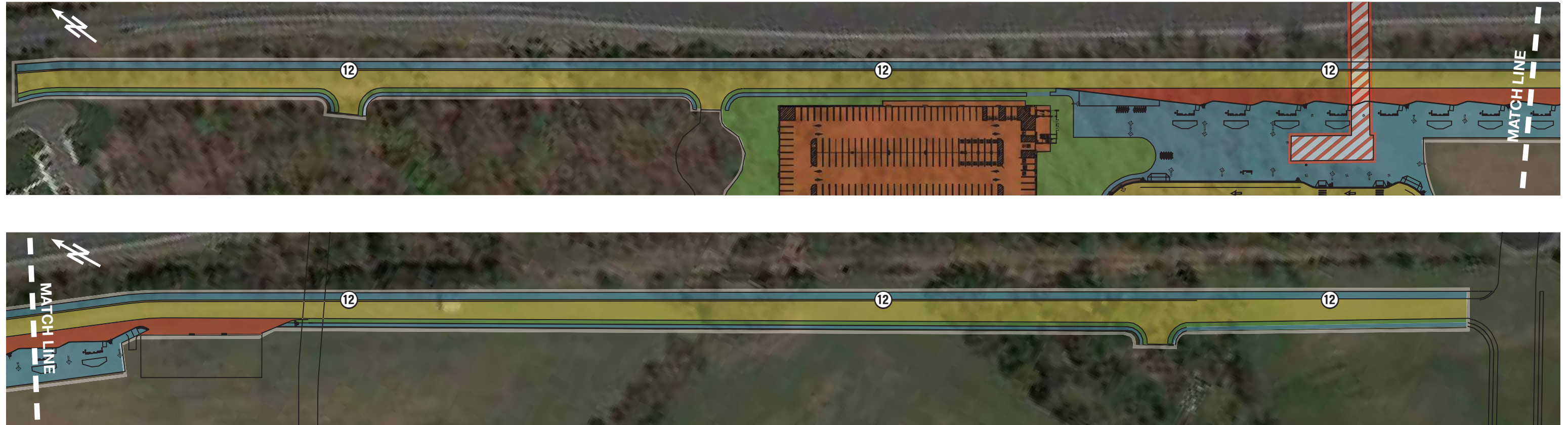
Roadway/Pedestrian Facilities Adjacent to Station Access Facilities (Arterials, Collectors & Local Streets)

- ⑫ Roadway, sidewalk, greenway, lighting, drainage



ASHBURN STATION — VINEGAR HILL DRIVE

County Limits of Responsibility



KEY	
	Asphalt Pavement
	Concrete Pavement
	Concrete Sidewalk
	Parking Garages

Entry Pavilion

- ① Sidewalk surrounding building (beyond 5 feet from building)
- ② Lighting at pavilion entrance beyond building
- ③ Bicycle racks, lockers & furniture
- ④ Not in County limits of responsibility

Pedestrian Bridge Between Station & Entry Pavilion

- ④ Not in County limits of responsibility (Area below pedestrian bridge within the extents is County's responsibility)

Station

- ④ Not in County limits of responsibility

Kiss & Ride Lots & On/Off-Site Bus Areas

- ⑤ Parking/circulation areas, bus bays, sidewalk/plaza areas (including shelters, lighting & furniture)
- ⑥ Landscape area
- ⑦ Stormwater management features (Catch basin pipes)

Parking Garages

- ⑧ Garage structure including entrances/exits
- ⑨ Sidewalk connecting to parking garage
- ⑩ Not in County limit of responsibility

Entry Roadway

- ⑪ Roadway, sidewalk, lighting, drainage

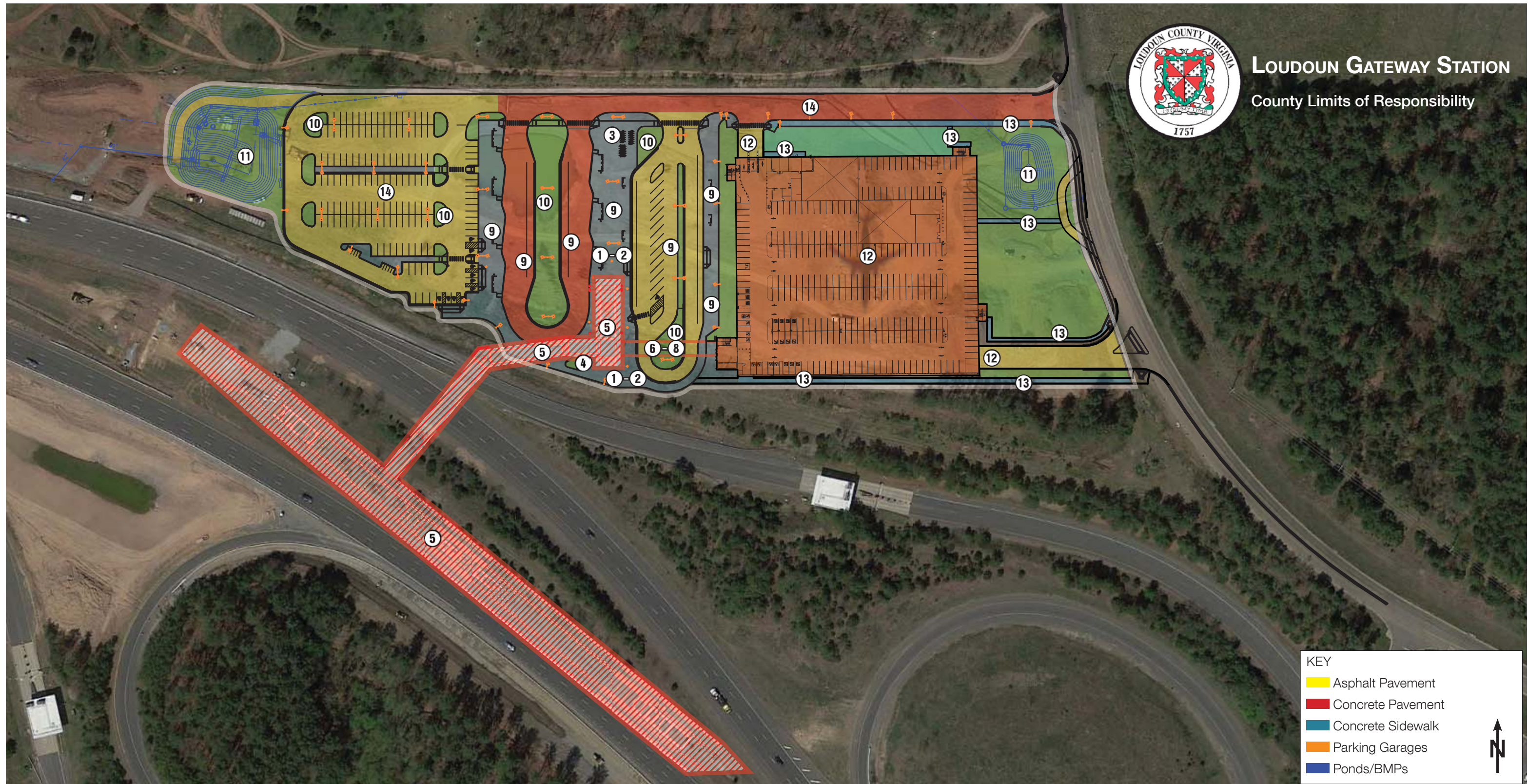
Roadway/Pedestrian Facilities Adjacent to Station Access Facilities (Arterials, Collectors & Local Streets)

- ⑫ Roadway, sidewalk, greenway, lighting, drainage



LOUDOUN GATEWAY STATION

County Limits of Responsibility



KEY	
	Asphalt Pavement
	Concrete Pavement
	Concrete Sidewalk
	Parking Garages
	Ponds/BMPs

Entry Pavilion

- ① Sidewalk surrounding building (beyond 5 feet from building)
- ② Lighting at pavilion entrance beyond building
- ③ Bicycle racks, lockers & furniture
- ④ Landscape area
- ⑤ Not in County limits of responsibility

Pedestrian Bridge Between Station & Entry Pavilion

- ⑤ Not in County limits of responsibility (Area below pedestrian bridge within the extents is County's responsibility)

Station

- ⑤ Not in County limits of responsibility

Pedestrian Bridge Between Entry Pavilion & Garage

- ⑥ Foundation, column/pier, superstructure/MEP
- ⑦ Landscaping beneath bridge (including grass)
- ⑧ Bridge drain pipes and splash blocks to point of connection with roadway drainage

Kiss & Ride Lot & Off-Street Bus Area

- ⑨ Parking/circulation areas, bus bays, sidewalk/plaza areas (including shelters, lighting & furniture)
- ⑩ Landscape area
- ⑪ Stormwater management features and drainage (ponds/vaults/bioretenion basins/other BMPs; catch basins/culverts/pipes)

Parking Garage

- ⑫ Garage structure including entrances/exits
- ⑬ Sidewalk connecting to parking garage

Parking Lot and Entry Road

- ⑭ Roadway, sidewalks, lighting, drainage