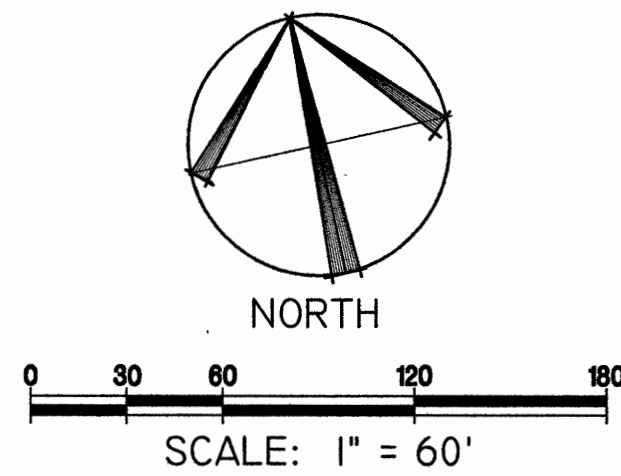
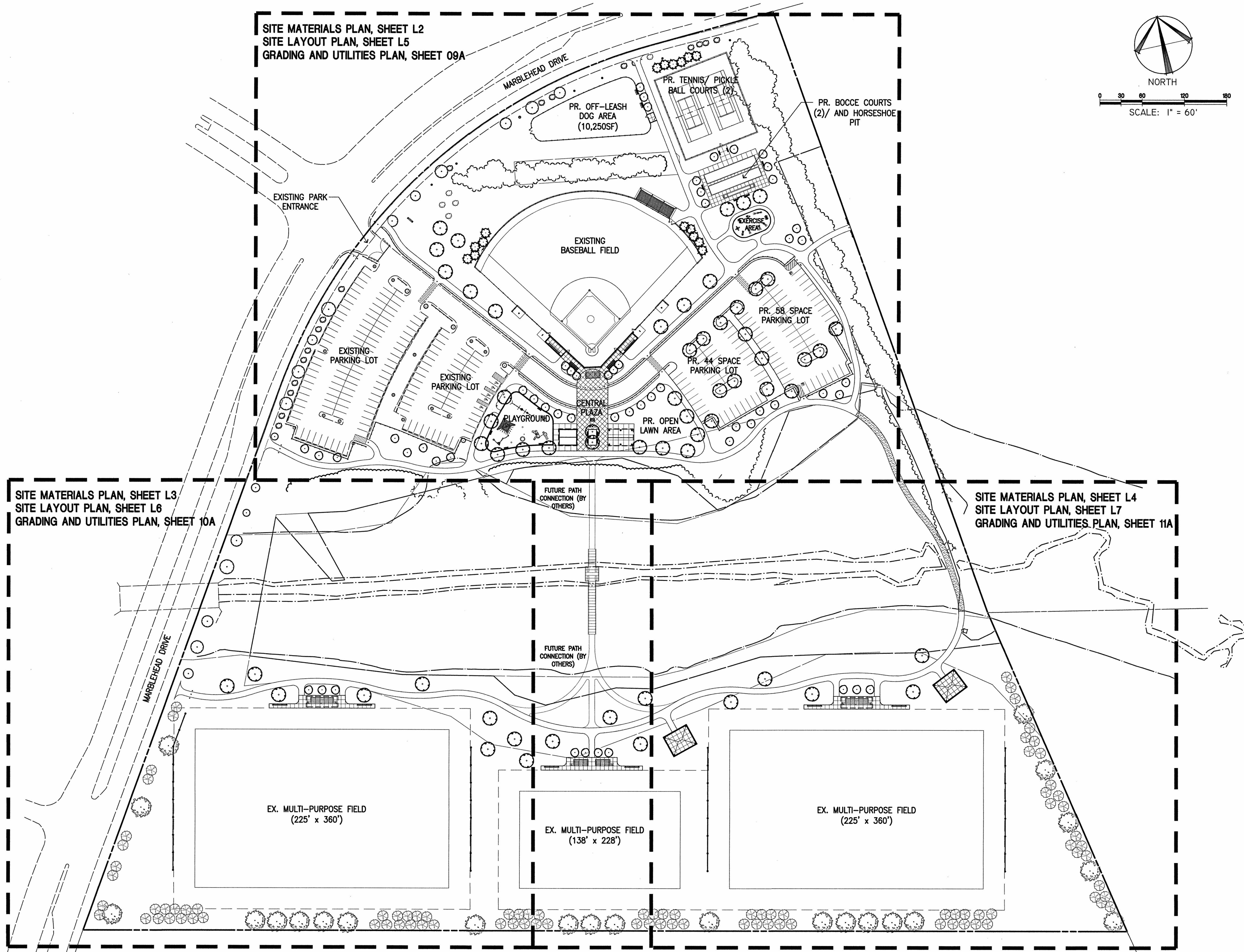


Copyright © 2016 by Gordon Associates, Inc. All rights reserved. No reproduction or use of this drawing is allowed in part or in whole by any process without prior written authorization from William H. Gordon Associates, Inc. (Gordon).



PROGRAMMING AND PLANNING  
CIVIL ENGINEERING  
LANDSCAPE ARCHITECTURE  
SURVEY AND MAPPING  
SECURITY CONSULTING

**Gordon**  
4501 Daly Drive  
Chantilly, VA 20151  
Phone: 703-263-1900  
www.gordon.us.com

REVISIONS	
NUMBER	DESCRIPTION

SUR: GORDON	DES: BC
DRW: BC	CHK: BC



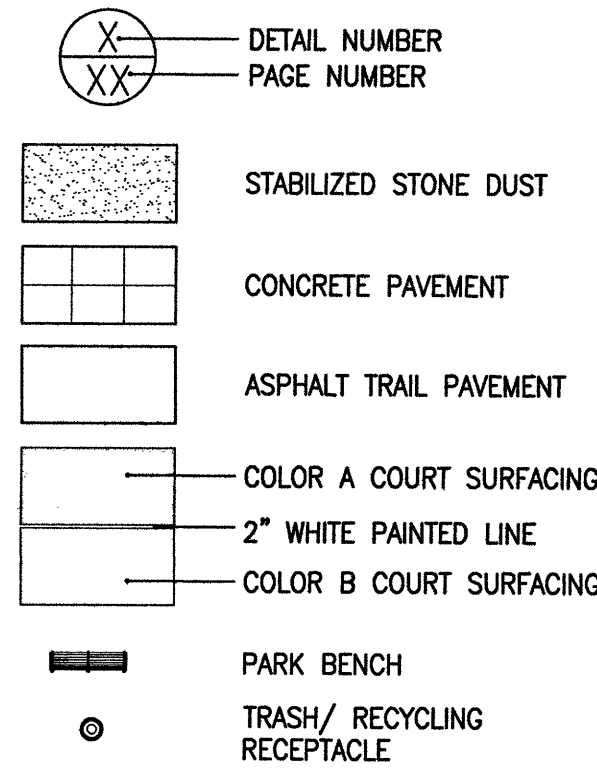
OVERALL PLAN  
**POTOMAC GREENE NEIGHBORHOOD PARK**  
FINAL PARK DEVELOPMENT  
20750 MARBLEHEAD DRIVE  
ASHBURN, VIRGINIA 20147

SCALE: HORIZ: 1"=60'
DATE: AUGUST 2016
PLAN: ---
JOB: 3164-0101
CADD: 3164-0101-L-0V-101.DWG
NCS: ---
NUMBER: L1 OF L42

**Gordon**

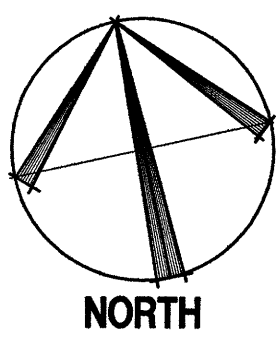
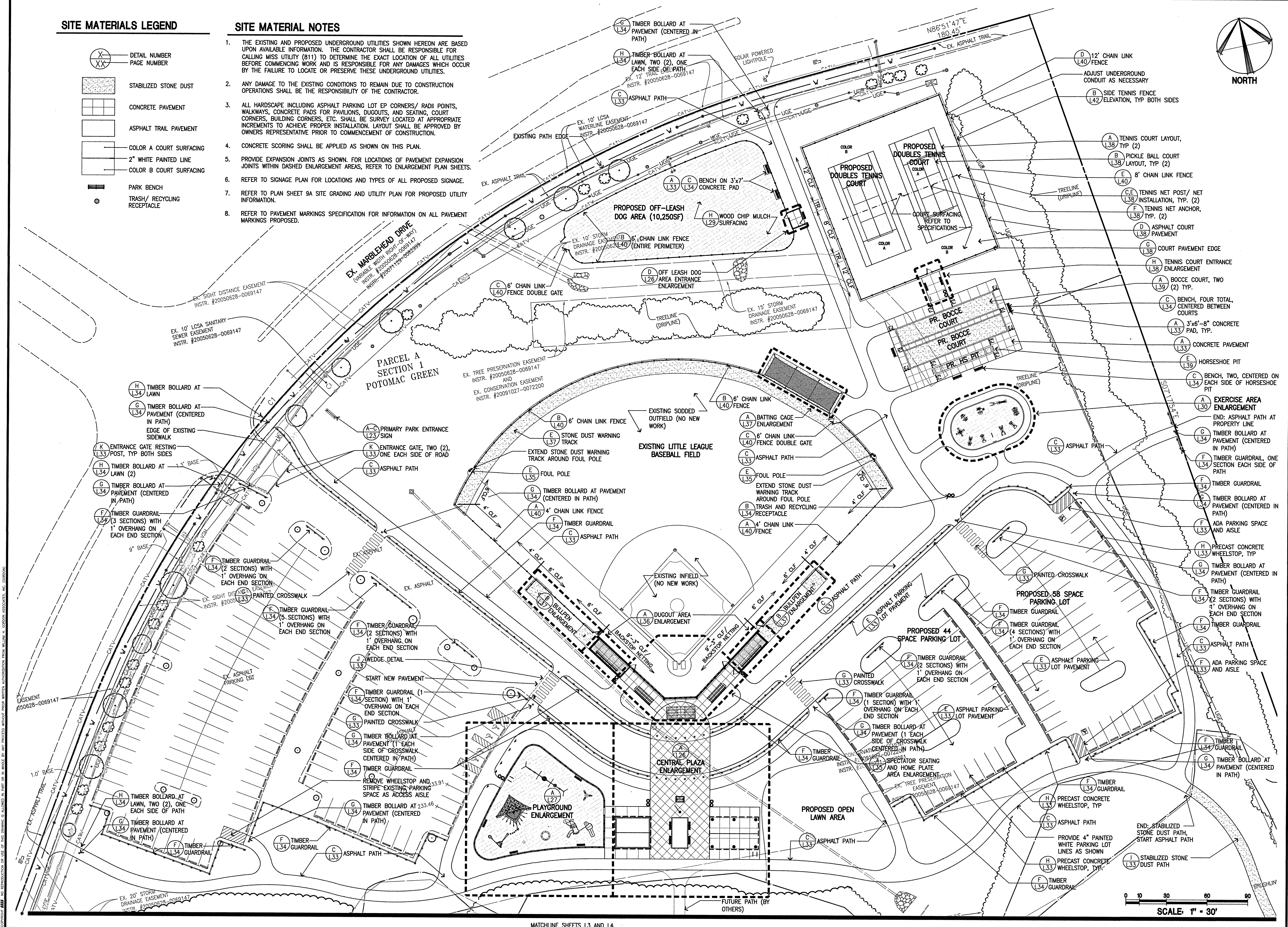


# SITE MATERIALS LEGEND



# SITE MATERIAL NOTES

1. THE EXISTING AND PROPOSED UNDERGROUND UTILITIES SHOWN HEREON ARE BASED UPON AVAILABLE INFORMATION. THE CONTRACTOR SHALL BE RESPONSIBLE FOR CALLING MISS UTILITY (811) TO DETERMINE THE EXACT LOCATION OF ALL UTILITIES BEFORE COMMENCING WORK AND IS RESPONSIBLE FOR ANY DAMAGES WHICH OCCUR BY THE FAILURE TO LOCATE OR PRESERVE THESE UNDERGROUND UTILITIES.
2. ANY DAMAGE TO THE EXISTING CONDITIONS TO REMAIN DUE TO CONSTRUCTION OPERATIONS SHALL BE THE RESPONSIBILITY OF THE CONTRACTOR.
3. ALL HARDSCAPE INCLUDING ASPHALT PARKING LOT EP CORNERS/ RADI POINTS, WALKWAYS, CONCRETE PADS FOR PAVILIONS, DUGOUTS, AND SEATING, COURT CORNERS, BUILDING CORNERS, ETC. SHALL BE SURVEY LOCATED AT APPROPRIATE INCREMENTS TO ACHIEVE PROPER INSTALLATION. LAYOUT SHALL BE APPROVED BY OWNERS REPRESENTATIVE PRIOR TO COMMENCEMENT OF CONSTRUCTION.
4. CONCRETE SCORING SHALL BE APPLIED AS SHOWN ON THIS PLAN.
5. PROVIDE EXPANSION JOINTS AS SHOWN. FOR LOCATIONS OF PAVEMENT EXPANSION JOINTS WITHIN DASHED ENLARGEMENT AREAS, REFER TO ENLARGEMENT PLAN SHEETS.
6. REFER TO SIGNAGE PLAN FOR LOCATIONS AND TYPES OF ALL PROPOSED SIGNAGE.
7. REFER TO PLAN SHEET 9A SITE GRADING AND UTILITY PLAN FOR PROPOSED UTILITY INFORMATION.
8. REFER TO PAVEMENT MARKINGS SPECIFICATION FOR INFORMATION ON ALL PAVEMENT MARKINGS PROPOSED.



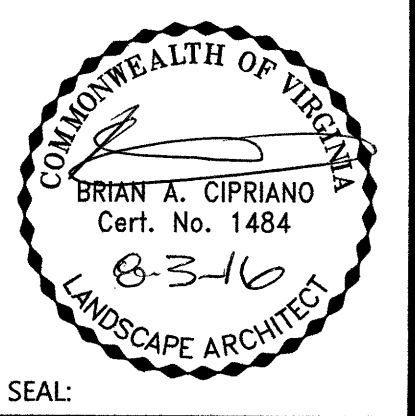
SCALE: 1" = 30'

PROGRAMMING AND PLANNING  
CIVIL ENGINEERING  
LANDSCAPE ARCHITECTURE  
SURVEY AND MAPPING  
SECURITY CONSULTING

**Gordon**  
4501 Daly Drive  
Chantilly, VA 20151  
Phone: 703-263-1900  
www.gordonus.com

REVISIONS	DESCRIPTION	NUMBER	DATE

SUR: GORDON	DES: BC
DRW: BC	CHK: BC



**POTOMAC GREENE NEIGHBORHOOD PARK**  
FINAL PARK DEVELOPMENT  
20750 MARBLEHEAD DRIVE  
ASHBURN, VIRGINIA 20147

SCALE: HORIZ: 1" = 30'  
DATE: AUGUST 2016  
PLAN: --  
JOB: 3164-0101  
CADD: 3164-0101-LP-102.DWG  
NCS: --  
NUMBER: L2 of L42  
**Gordon**



PROGRAMMING AND PLANNING  
CIVIL ENGINEERING  
LANDSCAPE ARCHITECTURE  
SURVEY AND MAPPING  
SECURITY CONSULTING

Gordon

4501 Daly Drive  
Chantilly, VA 20151  
Phone: 703-263-1900  
www.gordon.us.com

REVISIONS	
NUMBER	DESCRIPTION

SUR:	DES:
GORDON	BC
DRW:	CHK:
BC	BC

COMMONWEALTH OF VIRGINIA  
BRIAN A. CIPRIANO  
Cert. No. 1484  
8-2-16  
LANDSCAPE ARCHITECT

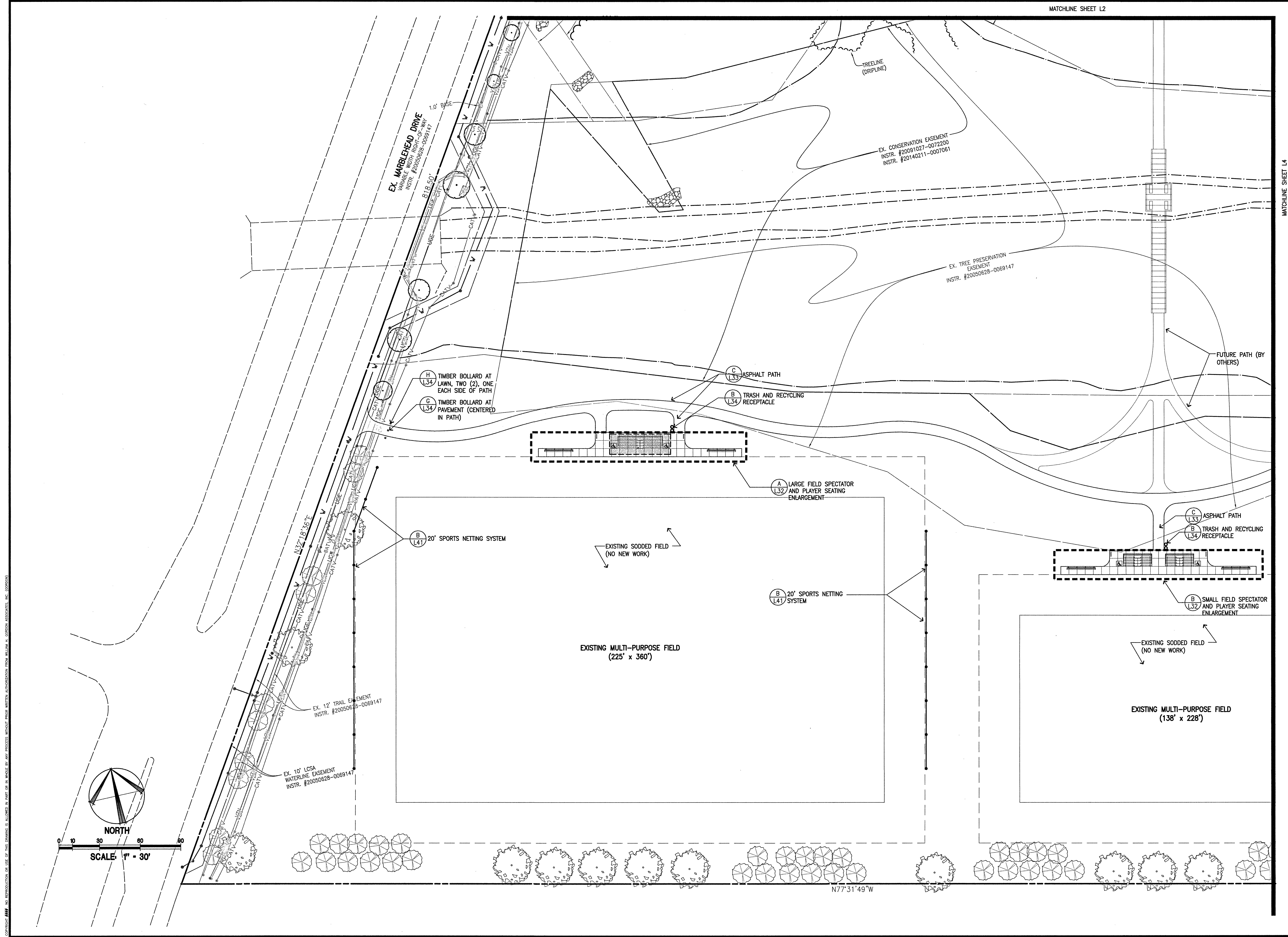
SEAL:

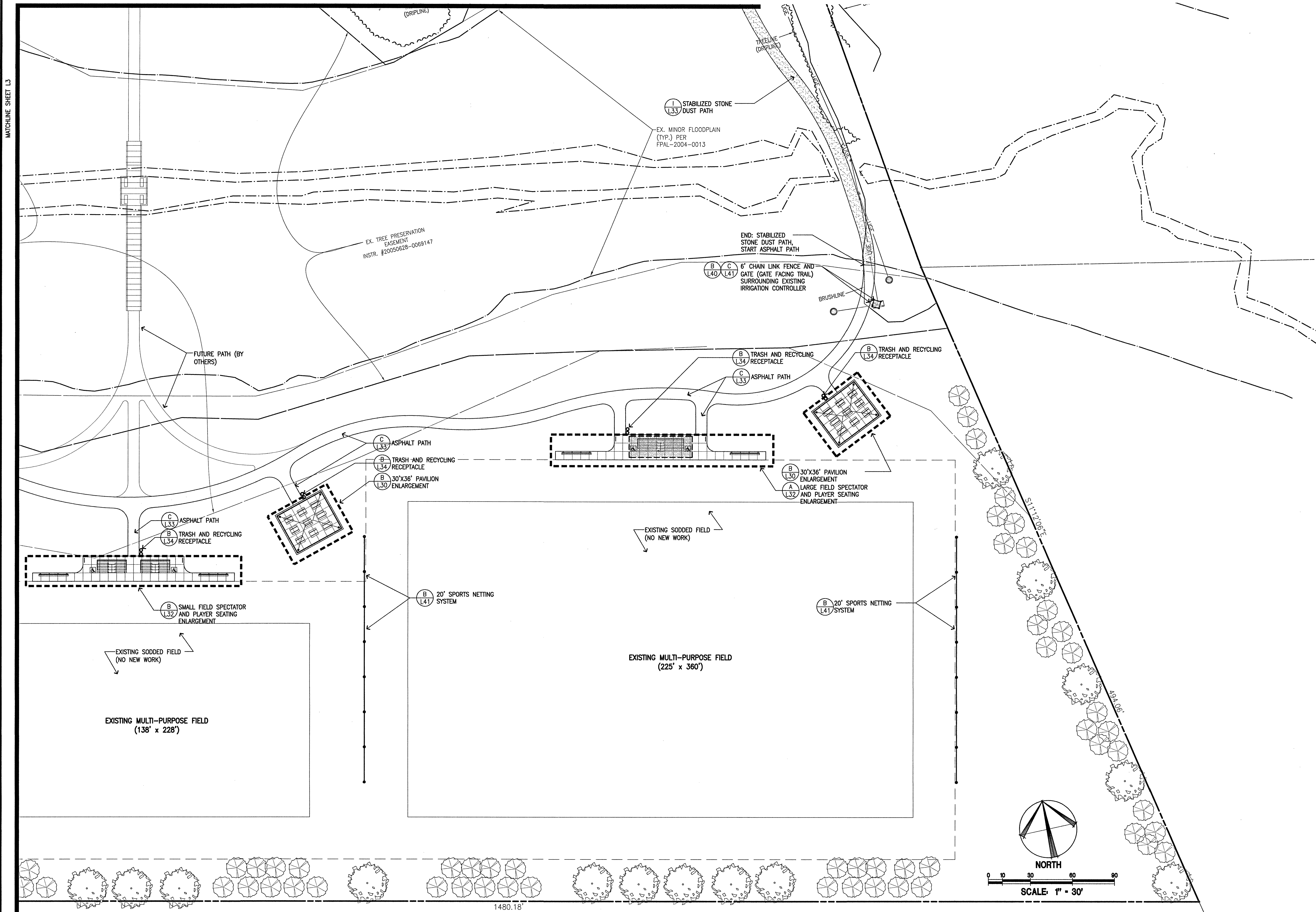
SITE MATERIALS PLAN II

POTOMAC GREENE NEIGHBORHOOD PARK  
FINAL PARK DEVELOPMENT  
20750 MARBLEHEAD DRIVE  
ASHBURN, VIRGINIA 20147

HORIZ: 1"=30'  
SCALE: VERT:  
DATE: AUGUST 2016  
PLAN: --  
JOB: 3164-0101  
CADD: 3164-0101-LP-102.DWG  
NCS: --  
NUMBER: L3 or L42

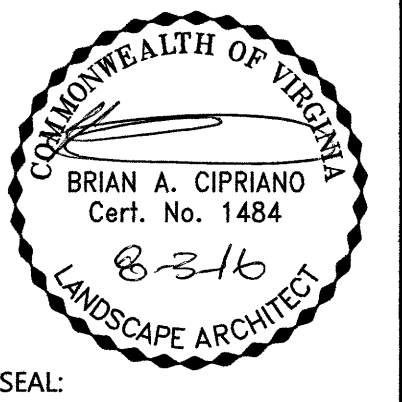
Gordon





REVISIONS		DESCRIPTION
NUMBER	DATE	

SUR: GORDON	DES: BC
DRW: BC	CHK: BC



**POTOMAC GREENE NEIGHBORHOOD PARK**  
FINAL PARK DEVELOPMENT  
20750 MARBLEHEAD DRIVE  
ASHBURN, VIRGINIA 20147

HORIZ: 1"=30'  
SCALE: VERT:  
DATE: AUGUST 2016  
PLAN: ---  
JOB: 3164-0101  
CADD: 3164-0101-L-P-102.DWG  
NCS: ---  
NUMBER: L4 of L42