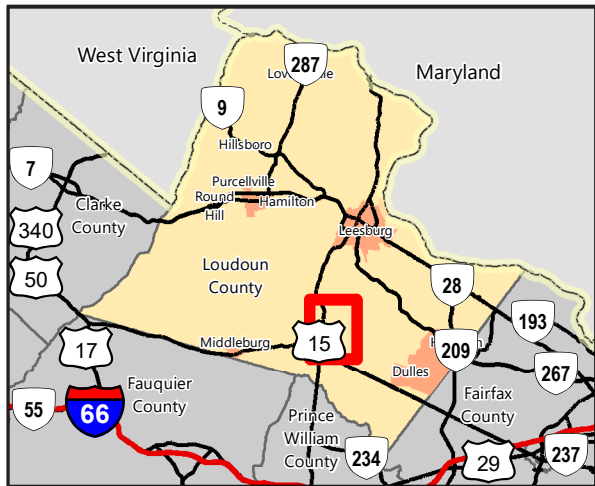


## Upcoming Improvements Evergreen Mills Road (Eastern Section)

Loudoun County  
VIRGINIA

0 0.25 0.5  
Miles





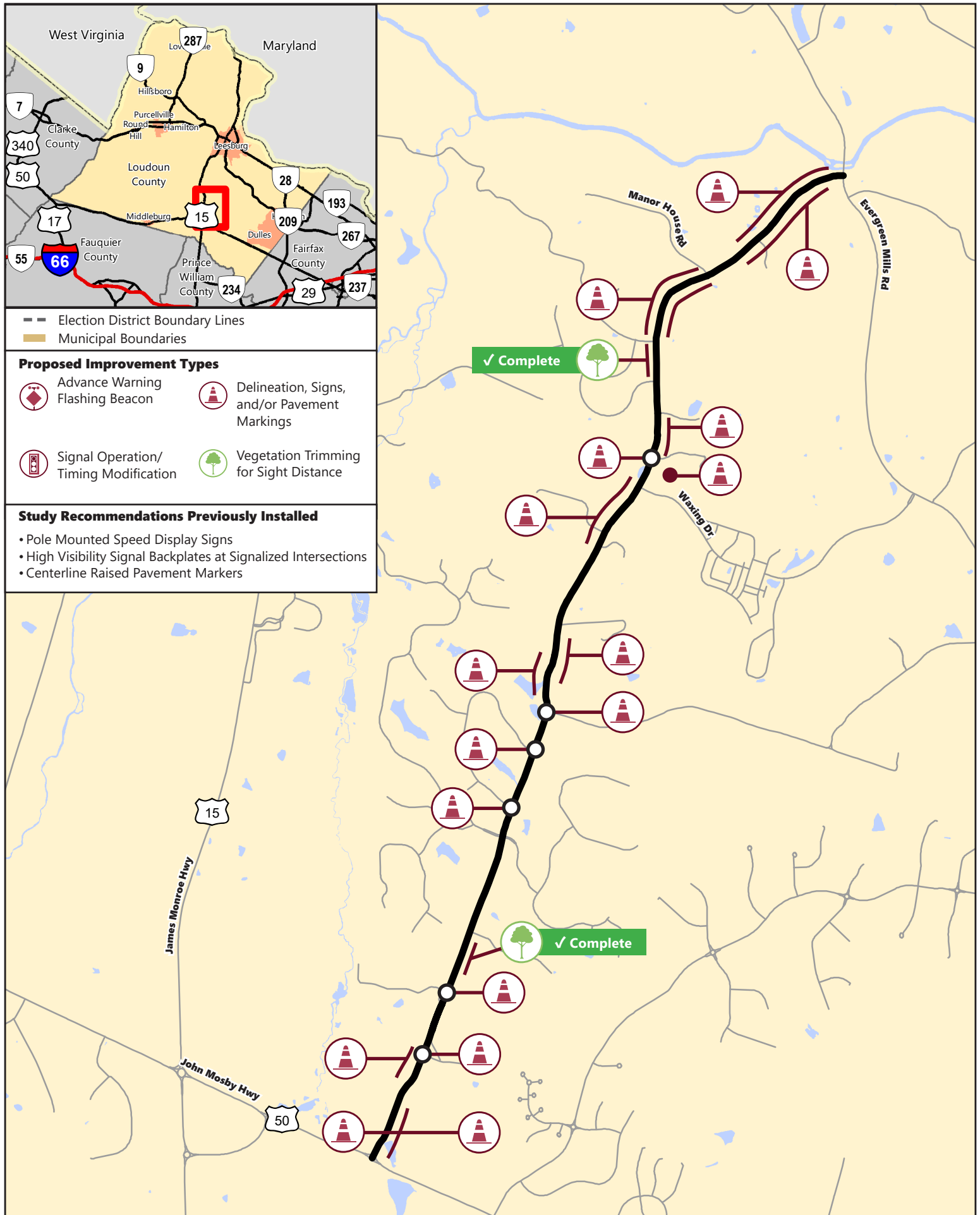
Election District Boundary Lines  
 Municipal Boundaries

#### Proposed Improvement Types

- |                                      |  |
|--------------------------------------|--|
| Advance Warning Flashing Beacon      | Delineation, Signs, and/or Pavement Markings |
| Signal Operation/Timing Modification | Vegetation Trimming for Sight Distance       |

#### Study Recommendations Previously Installed

- Pole Mounted Speed Display Signs
- High Visibility Signal Backplates at Signalized Intersections
- Centerline Raised Pavement Markers



## Upcoming Improvements Watson Road

Loudoun County  
 VIRGINIA

0 0.2 0.4  
 Miles

