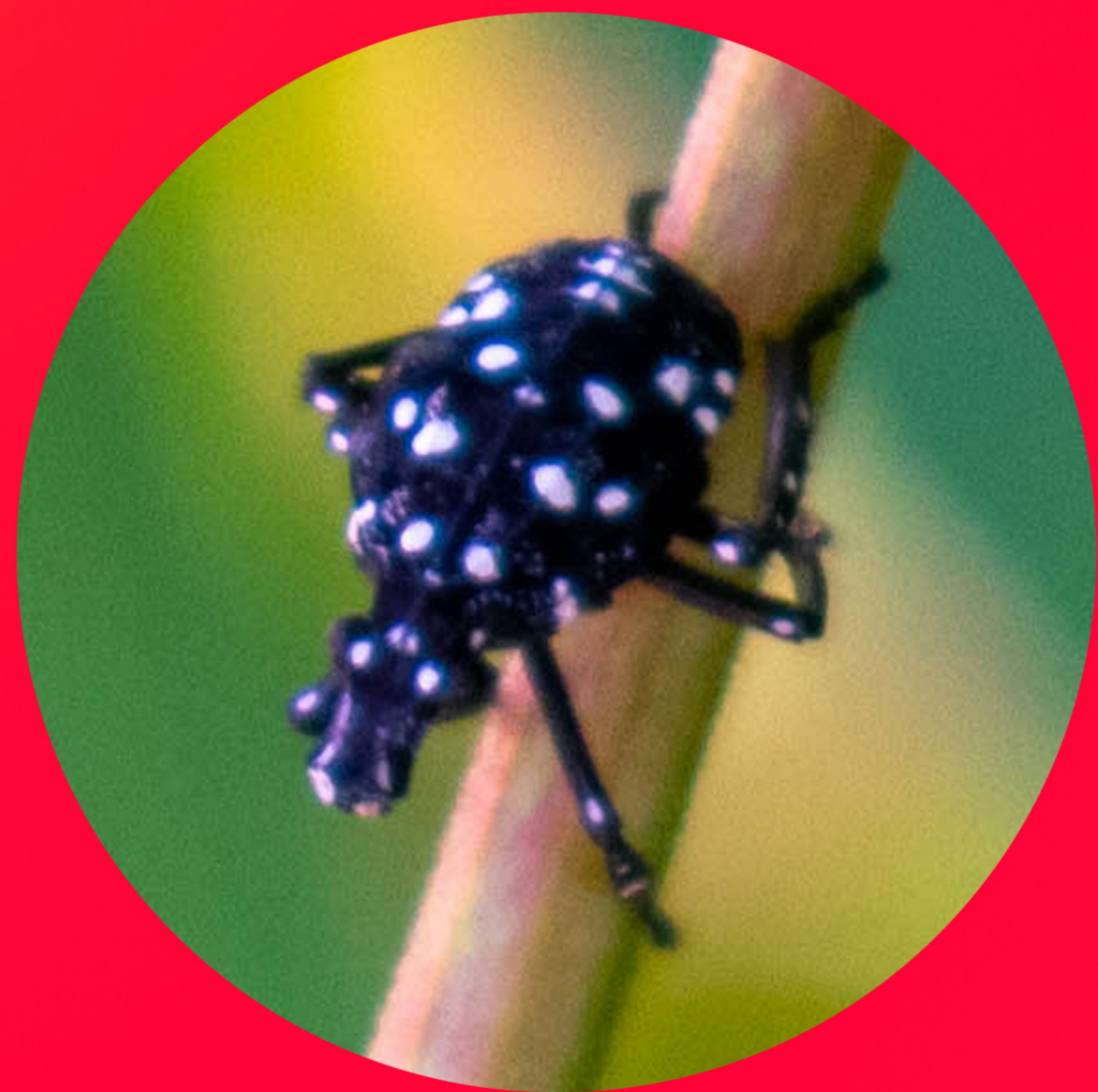


# SLOW THE SPREAD OF SPOTTED LANTERNFLY IN LOUDOUN COUNTY



**EGGS** (December-May)  
Size: About 1.5" long



**BLACK AND WHITE  
NYMPH** (May-August)  
Size: 4mm up to 3/8" long



**RED, BLACK AND  
WHITE NYMPH** (July-August)  
Size: 7/8" long or 12mm



**ADULT** (July-December)  
Size: About 1" long

**SQUASH IT! TAKE A PICTURE! REPORT IT!**

*Find more information at  
[loudoun.gov/spottedlanternfly](https://loudoun.gov/spottedlanternfly).*

