



Loudoun County

VIRGINIA

WHERE TRADITION MEETS INNOVATION

Franklin Park Master Plan

Public Information Meeting

Tuesday, October 25, 2022, 6:30 p.m.

Franklin Park Performing and Visual Arts Center

LOUDOUN
COUNTY
VIRGINIA

Transportation and
Capital Infrastructure



LOUDOUN.GOV

Master Plan Steering Committee



LOUDOUN
COUNTY
VIRGINIA

Transportation and
Capital Infrastructure



Loudoun County

Stephen Torpy, Director – Parks, Recreation, & Community Services
Mark Novak, Chief Park Planner – Parks, Recreation, & Community Services
Logan Baird, Engineer – Transportation and Capital Infrastructure

Town of Round Hill

Melissa Hynes – Town Administrator

Design Team



Environmental



- Project Manager
- Planner
- Landscape Architect
- Civil Engineering

GOROVE **SLADE**
Transportation Planners and Engineers

Traffic

Project Introduction

Franklin Park encompasses over 200 acres in the rolling hills of Loudoun County with spectacular views of the Blue Ridge Mountains. Set between the towns of Purcellville and Round Hill the park offers many recreational opportunities for a variety of users. Loudoun County is expanding Franklin Park to include two adjacent parcels, one of which is owned by the Town of Round Hill. A master planning process has been initiated to identify potential amenities that may be added to the park. Through collaborative efforts between Loudoun County and the Town of Round Hill, this master planning process will strive to unite the variety of recreational uses in the existing park and to Sleeter Lake.

Process

- Identify Opportunities and Constraints
- Develop Preliminary Master Plan
- Public Engagement
- Zoning/Entitlement
- Final Master Plan Report



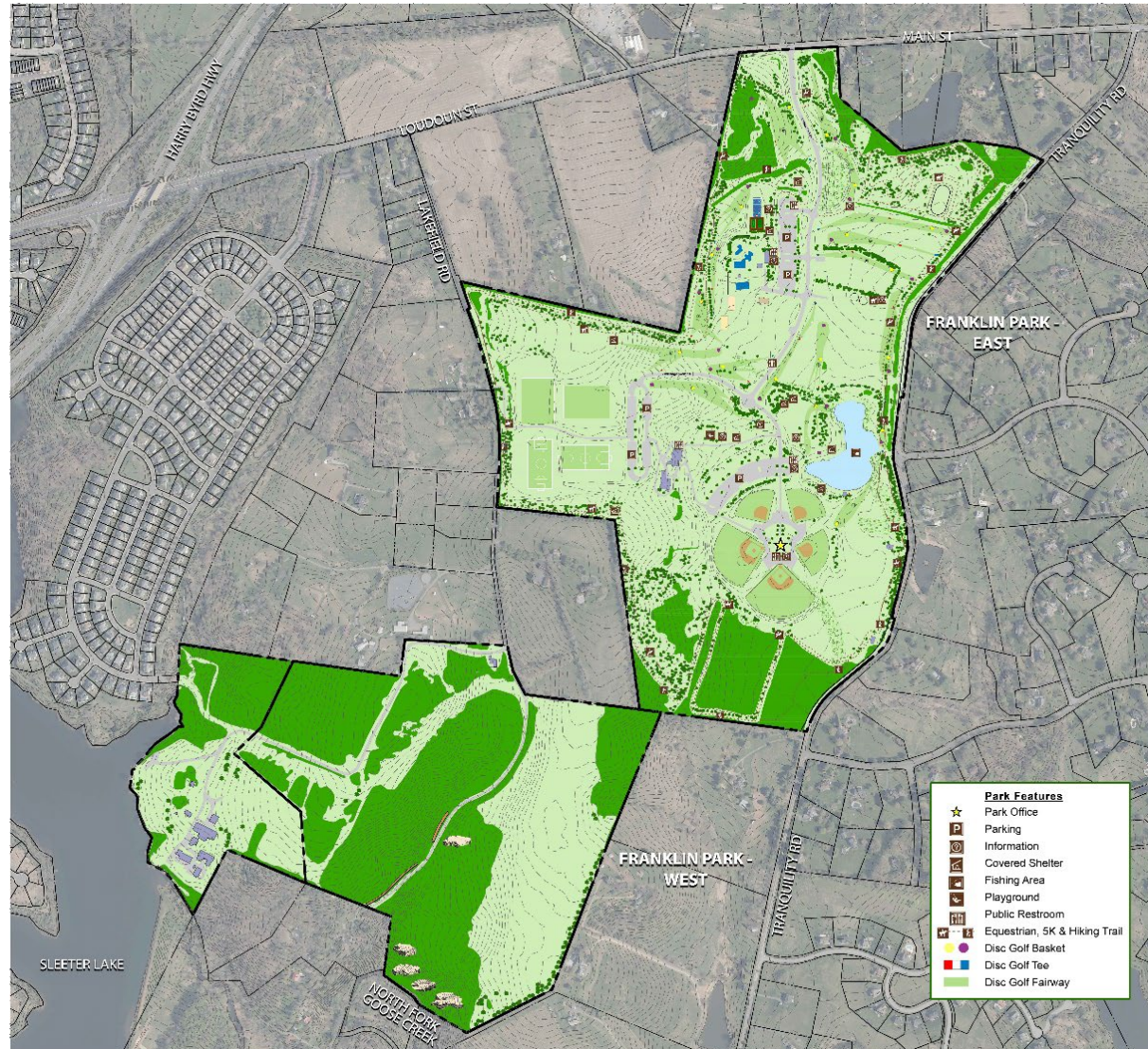
Franklin Park – Existing Parcel



Franklin Park – Additional Parcels



Franklin Park – Existing Conditions



Franklin Park – East



Franklin Park – East



Franklin Park – East



Franklin Park – East



Franklin Park – East



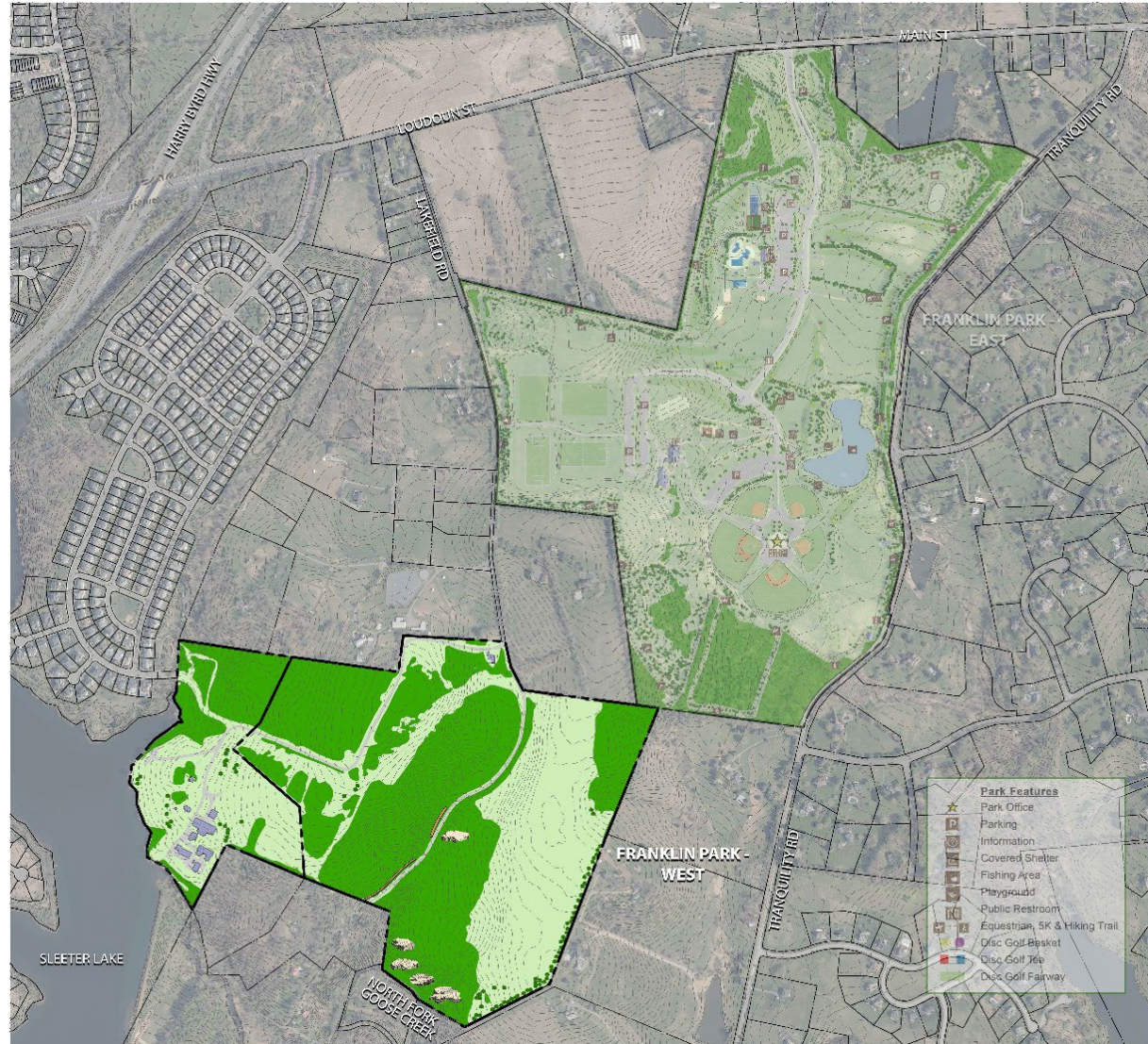
Franklin Park – East



Franklin Park – East



Franklin Park – West



Franklin Park – West



Franklin Park – West



Franklin Park – West



Franklin Park – West



Franklin Park – West



Franklin Park – West



Franklin Park – West



Franklin Park – West



Site Analysis

LEGEND

- HIKING TRAIL
- EQUESTRIAN TRAIL
- VEHICULAR NETWORK
- ROUND HILL TRAIL
- MEADOW
- FOREST

- 1

SLEETER LAKE
- 2

TOWN OF ROUND HILL WATER TREATMENT FACILITY
- 3

ABANDONED RUINS
- 4

FRANKLIN PARK POOL AND SPORTS COURTS
- 5

FRANKLIN PARK PERFORMING AND VISUAL ARTS CENTER
- 6

BREEZEWOOD KENNELS

EXISTING AMENITIES

- PARK OFFICE

RECREATIONAL SPORTS FIELDS - 4
- PARKING

BASEBALL FIELDS - 5
- INFORMATION KIOSK

EVENT AREA
- COVERED SHELTER

POOL
- FISHING AREA

TENNIS COURTS - 2
- KAYAK LAUNCH AND STORAGE

VOLLEYBALL COURTS - 2
- PLAYGROUND

EQUESTRIAN RING
- PUBLIC RESTROOM

DISC GOLF FAIRWAYS - 18



Conceptual Amenities

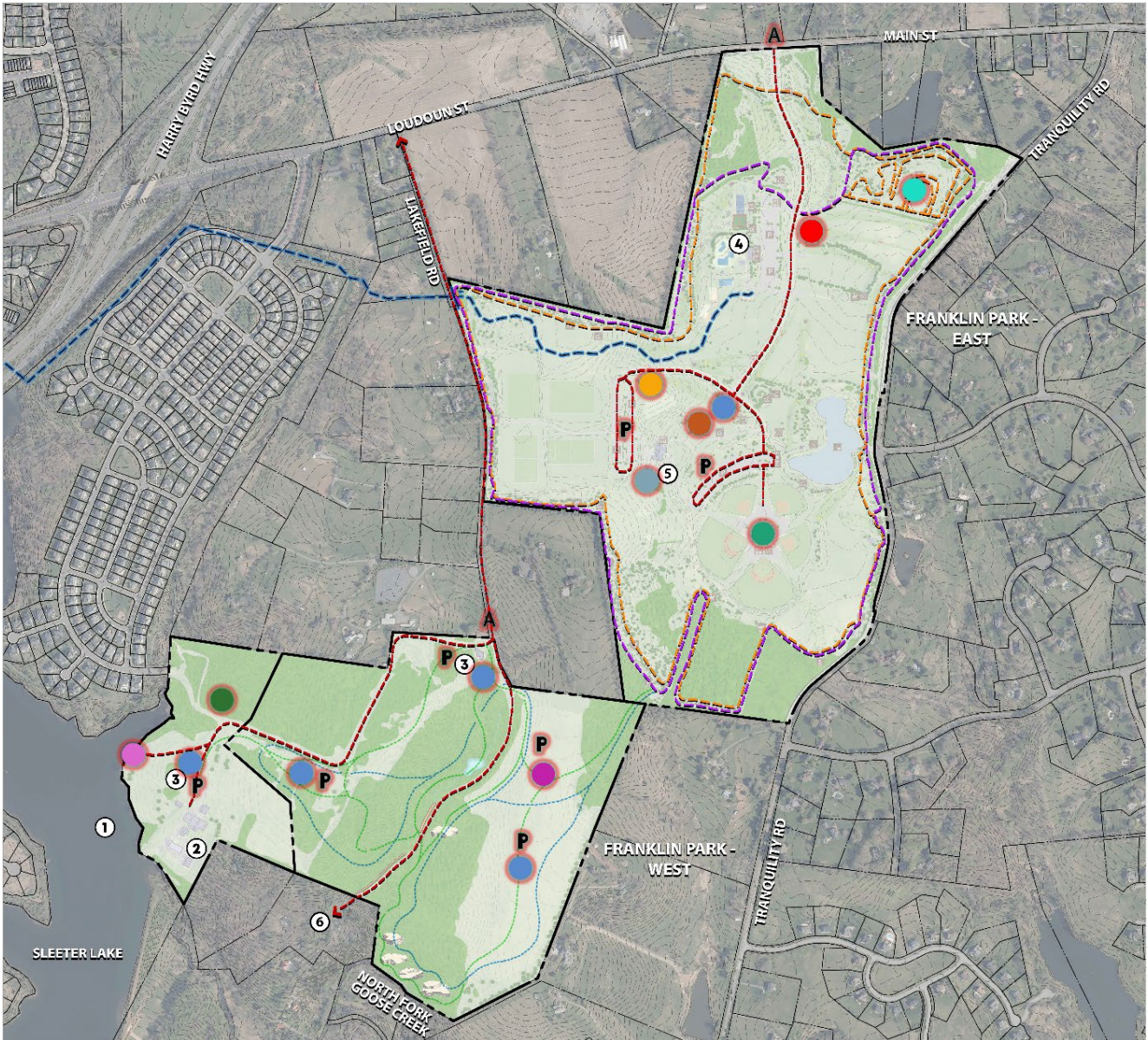
LEGEND

- HIKING TRAIL
- EQUESTRIAN TRAIL
- VEHICULAR NETWORK
- ROUND HILL TRAIL
- MEADOW
- FOREST

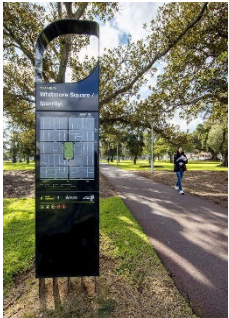
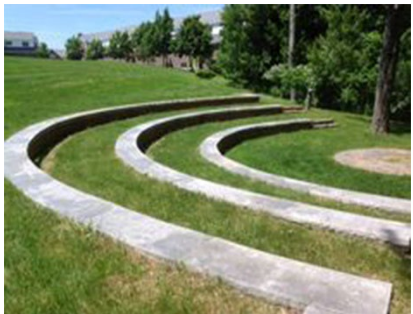
- 1 SLEETER LAKE
- 2 TOWN OF ROUND HILL WATER TREATMENT FACILITY
- 3 ABANDONED RUINS
- 4 FRANKLIN PARK POOL AND SPORTS COURTS
- 5 FRANKLIN PARK PERFORMING AND VISUAL ARTS CENTER
- 6 BREEZEWOOD KENNELS

PARK AMENITIES

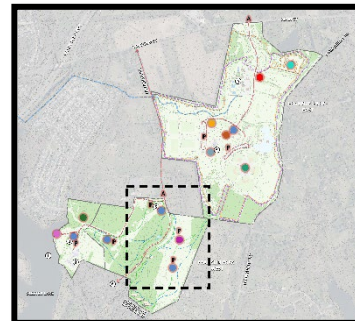
- VISITORS CENTER / OFFICE
- CONCESSION STAND
- AMPHITHEATER
- EQUESTRIAN CENTER
- EXPANDED MAINTENANCE
- EQUESTRIAN TRAILS
- HIKING TRAILS
- DESTINATION PLAYGROUND
- DRONE USE AREA
- PARK PAVILLIONS
- KAYAK LAUNCH AND STORAGE
- TOWN OF ROUND HILL OFFICE AND MAINTENANCE FACILITY
- P PARKING
- A ACCESS



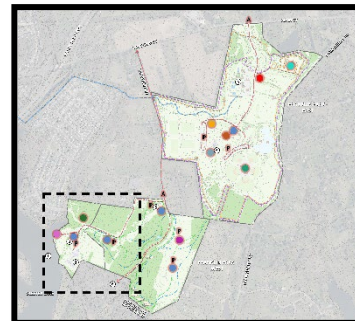
Franklin Park – East: Central Facilities



Franklin Park – West: Equestrian and Trails



Franklin Park – West: Sleeter Lake



Next Steps

- October 25: Public Information Meeting
- January 2023: Zoning Plan 1st Submittal
- Spring/Summer 2023: Zoning Plan Referrals and Staff Report
- Winter 2023: Planning Commission / Board of Supervisors Public Hearings
- January 2024: Final Master Plan

Thank You

For more information:



loudoun.gov/franklinparkplan



dtci@loudoun.gov



703-737-8004

Written comments from the public are requested by November 22, 2022. The comment form is located at loudoun.gov/franklinparkplan.

Comments are accepted through online form, email or mail.